

SHIELD 1969

Volume XXXI

St. Paul Bible College
St. Paul, Minnesota

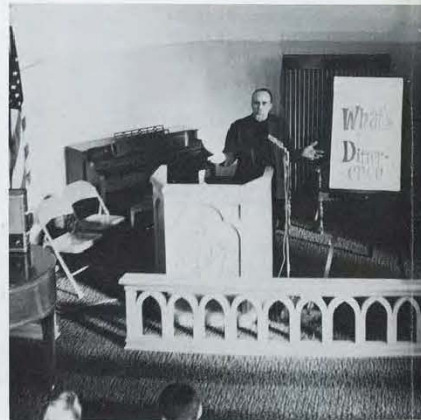
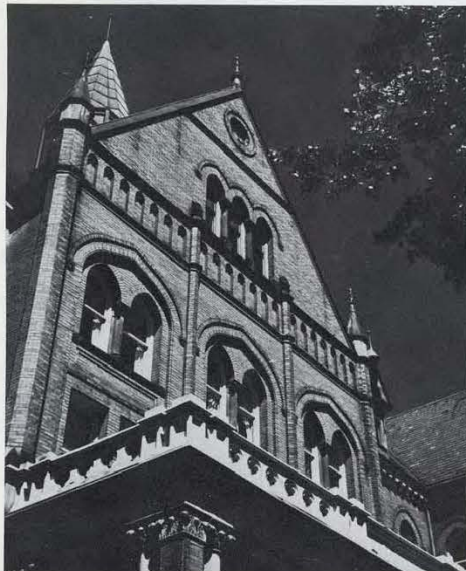


R
AY
68
.56
U.31

26,256
Advisor: W. W. Conley
Editor: Faith Boese

Inside Story

Introduction to 1968-69	2-7
vision	2-3
training	4-5
service	6-7
Incidents	8-33
... the story that was this year, from beginning to end	
Intellectuals and Indispensables	34-61
faculty, administration, staff	
Individuals	62-93
seniors	64-69
juniors	70-75
sophomores	76-81
freshmen	82-91
Involvement	94-111
... the organizations in which many students participated	
Indefatigables	112-123
... the sports life of the college	
Inevitable	124-140
advertising	126-135
directory	136-140



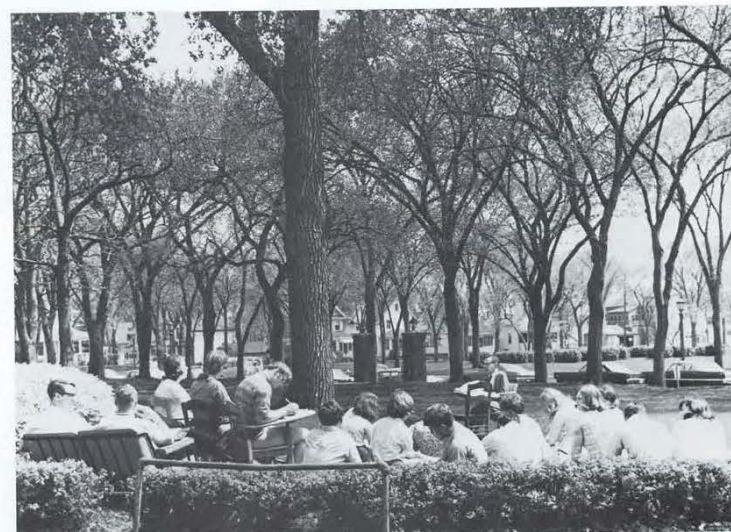
from national leaders
chapel speakers
college personnel



... we focus our vision



through studying the Bible and liberal arts
participation in wholesome activities
experiences of our predecessors



... we obtain our **training**



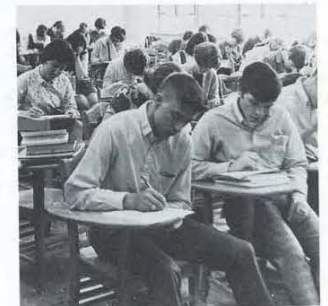
in menial every-day tasks
cooperation and small sacrifices
C.S. assignments and special tours



... we experience our **service**



INCIDENTS





ABOVE: A blindfold is at least a good excuse for socially unacceptable dining manners. The frosh victims don't seem to mind their handicap. **RIGHT:** Confusion reigns when thirty-nine freshmen own matching blue luggage.



Endurance Is the Key: Tests Through Initiation

BELOW: Dave Swanson sports one of the smart feathered beanies that marked all freshmen initiates as targets of those who had been through the ranks previously.



Questioning eyes and half-scared whispers greeted the ageless halls of St. Paul Bible College as new students trickled in. The first challenge was a battery of tests; the second, a lengthy registration line.

Various activities during the first week were designed to acquaint the freshmen with other students, the school, the faculty, the administration. Orientation week ended with a retreat at Silver Lake where tensions were eased in egg-throwing contests, rowboat races, and traditional counselor-dunking. Along with the fun came a rich spiritual ministry designed to help new students begin their college career in a most meaningful way.

Upon return to the college, the frosh quite quickly became aware of their lowly status as initiation events were thrust upon them. Feathered beanies, toothpaste mustaches, and "air raid" wastebaskets made the scene. The initiation party on Thursday night held the culmination of frosh tortures; survivors became members of the official SPBC family.

Rev. Bailey Introduces Victorious Deeper Life

The fall deeper life conference brought to the St. Paul Bible College campus the Reverend Keith Bailey of Chicago, Illinois. Our speaker has been superintendent of the Midwest district of the Christian and Missionary Alliance.

He spoke of the importance of the Spirit filled life and climaxed the week with a message on how to be filled with the Holy Spirit. Many students met God in a new way under Rev. Bailey's dynamic ministry.

RIGHT: The ministry of Rev. Keith Bailey on the SPBC campus for three days in October will be remembered by many as a milestone of decision leading to a deeper life in Christ.



LEFT: A segment of the audience demonstrates the prevailing mood of careful attention as the Word was brought by God's messenger.



Missions Conference Theme Stresses Great Commission

Go — Preach, Teach, Reach, the theme of missionary conference this year, was carried out in a number of ways. The exhortation to **go** was illuminated by these specific thoughts: **preaching** the unsearchable riches of Christ; **reaching** the lost souls for Christ; and **teaching** the holy Word.

Several missionaries brought pertinent challenges to the SPBC audience. The messages were not only moving and inspirational, but also practical insights into foreign lands and the missionary life and work. There were seminars on problems to expect on the field, on practical life situations, and on prospects of future ministries. Always the truth was presented of the never-failing guidance of the Holy Spirit in faith and in power.



LEFT: The Home Missions prayer band entered this specimen in the "Miss America" contest; some remembered her as having played a role in "A Salute to World Missions" two years earlier. **ABOVE:** Rev. Harry Post, a veteran of many years missionary service in Indonesia, was one of the missionaries who conducted a seminar for students during missionary conference.



ABOVE: Conference theme of **Go: Preach, Teach, Reach** is cleverly depicted in main hall traffic light which also commands, "Do not block intercession." **RIGHT:** Rev. Robert Bartel, as Personnel Secretary of the C&MA recruits workers for the harvest.

LEFT: "How can God have a son? I didn't know He was married!" Bob Kallem, Neil Dean, and Dan Noll of the Principles of Missions class, give a skit depicting cultural barriers in presenting the Gospel. **BELOW:** Mr. Tewinkel moderates a panel discussion among missionaries from many parts of the world.



Queen Reigns Over Homecoming

"Building an Image of Excellence," the theme of Homecoming '68, included in its perspective the possibilities of excelling in all things done for the glory of God.

The activities of the weekend kept most of the visiting alumni busy from the Friday chapel with Dr. Don Kenyon until the closing banquet Saturday night. In between were a special missionary meeting, business meetings, and a basketball game.

The present student body of the college was involved with the alumni activities to the extent of electing a Homecoming Queen to be crowned during the half at the basketball game. Barbara Brown was named queen. Her court included a princess from each class as well as the basketball princess.



LEFT: Three SPBC players gang up on one high-flying alumnus, but the undergraduates didn't make it to the top in this game. **ABOVE:** The Homecoming Queen and her court earned honorary folding chairs at court-side. The chosen ladies were Kathy McClain, sophomore; Barb Brown, queen; Gayle Johnson, basketball princess; Margaret Taylor, senior; Lois Merrill, junior; and Jean Crawford, freshman princess.



ABOVE LEFT: The annual Alumni Banquet was the final event in the Homecoming weekend activities. The amount of food consumed was not disclosed! **ABOVE:** Mrs. Edna Teeter was honored as Alumnus of the Year. Miss Ruth Jones, partially hidden behind the mike, was named on special plaque when a new scholarship fund was set up. **LEFT:** The tour group with members Dale Heckman, Kathy McClain, Leigh Ann Spaulding, and Mary Dohrmann provided special music for the banquet guests.



LEFT: The heart of a pumpkin is almost exciting enough to bump heads over to these three knife-wielding gremlins. **RIGHT:** The cornstalk camouflage effectively destroyed the true identity of the college dining hall.



Party-Goers Camouflage Celebrate Eve of

On the evening before All Saints' Day, even the intellectuals at St. Paul Bible College lay aside the usual routine to hob nob with goblins and witches and other spooks nondescript. The annual Halloween party sponsored by the sophomore class took place in the "cafeteria," although it was hardly recognizable in its cornfield guise.

Sophistication, All Saints' Day

Fellows and gals thought it great sport to play trick-or-treat in one another's dormitories during the open house. Probably the greatest benefit of the festivities for this holiday is the fact that the collegians are permitted for once to remove their masks of sobriety and show their reality in these hallowed halls.

ABOVE: Act I — Disguised as mortals a group of tricksters entertain their fellows with a near-sighted simulation of Broadway. **BELOW:** Whatever is in the box, it better be worth all the suspense that auctioneer Miller is building up.



ABOVE: John Young apparently thinks he is a reincarnated Chinese ghost as he emits some horrendous gasp — or was it another, "Confucious say"? **RIGHT:** Puppies and blonde-haired black people and all manner of grandly-garbed characters appeared ready to enjoy a peaceful evening.





LEFT: The star of David shines overhead as Mrs. Lucille Brown directs the ladies in a song of tribute to the Holy One of Israel. **RIGHT:** Mr. George Thompson did the narrator's duties throughout the evening's musical program.



Musical Tribute to Christmas Hails Nativity, Second Advent

The annual Christmas concert was held at Hamline Methodist Church. The stately sanctuary resounded to the tributes of the college concert choir and band in honoring the two advents of our Christ. His nativity and His return were presented by the Male Chorus, the Choral Club, and the Girls Choir, both as individuals and as a combined choir.

Mr. George Thompson of the college speech department gave narrations between vocal and instrumental numbers. Miss Mary Dohrmann performed as guest soloist. Harp and violin artistry provided a stirring oratorical rendition.

The mass choir, directed by Mr. Raymond Schweizer, voiced the joyous finale, "Behold, He Cometh."

LEFT: The platform of the nearby Hamline Methodist Church was more than filled by the massed choirs of the college. **RIGHT:** Members of the concert band spilled onto the overflow pews for their part in the program.



ABOVE: Male Chorus and Girls Choir members await their cues to move up to the platform as concert time draws near. **BELOW:** The Choral Club pauses in readiness to burst into a hymn of praise to their God.





ABOVE: Who says you can't have fun at a banquet? Mary Paul and Her "family" seem to be doing fine!
ABOVE RIGHT: Faculty quartet of Tewinkel, Mason, Shepson, and Ferry take chances on spilling their coffee — just for laughs. **BELOW:** The Conleys and Rices give one the notion that women are more sociable than men.



First Winter Banquet Augments Traditional Holiday Festivities

"O come, all ye faithful, joyful and triumphant!" Even in the rush of the last weeks of school before the holidays, the real meaning of Christmas is not forgotten on the St. Paul Bible College campus. Amid the mistletoe and holly and evergreen boughs that brighten the dormitories and hallways, the nativity of Christ is depicted in any number of ways. Early Monday mornings a group of unusually-dressed young ladies compete with their noisy transportation to "repeat the sounding joys" on their way to Phy. Ed.

The first winter banquet, known this year as "The Blizzard," (and quite accurately, as it turned out) was a well-attended event featuring faculty and staff in the program. The annual open house for both dormitories attested to the ingenuity of the students in decorating their rooms.

Early one frosty morning the senior girls donned sheets and halos to awaken the other students in the tradition of Santa Lucia. They traveled by candlelight, bringing with them pre-breakfast snacks of cookies and hot chocolate. Another night all the girls were in for a surprise when male voices echoed in the halls at midnight. Caroling in such a manner, and the other Christmas traditions fill the last week of school before vacation with an overflow of Christmas spirit.



ABOVE: First a trio, then a whole host of angelic senior girls and their dean bring early morning cheer. Note that the "halos" are not for real! **LEFT:** Along with the blessings of Christmas came more than brief "showers" of snowflakes. Ask Mr. Hahn; he'll tell you!



Ministry of New York Preacher Attends Blessing of Holy Spirit



LEFT: Doctors Battles and Gates find the phenomenon of a half-cup of coffee intellectually stimulating. **BELOW:** Brothers Cliff and Ray Olson sing one of the speaker's favorite numbers.



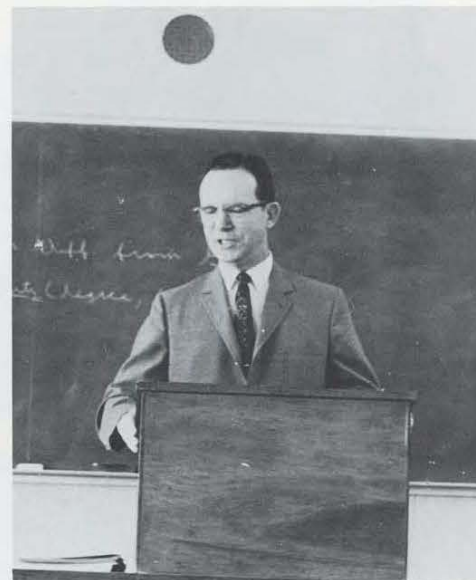
The Reverend Doctor Robert Battles, minister of the first Christian and Missionary Alliance church established in New York City, brought the Word of the Lord to the SPBC constituency for the second series of deeper life meetings this year. It was a rare privilege to have Mrs. Battles accompany her husband on his visit to our campus, and her ministry was deeply appreciated as well.

Beginning on the day of prayer which preceded the first meeting with our speaker for the week, it was evident that the Holy Spirit was at work in the lives of many dedicated students.

Testimonies in chapel following the deeper life conference indicated that many positive commitments were made in regard to victorious living.



BELOW: Dr. Battles clarified many of the deep truths he presented with apt illustrations. **LEFT:** Students spent many profitable hours in discussion with Dr. and Mrs. Battles.



LEFT: Rev. Melvin Hall recounted his experiences of the Lord's blessing in relation to stewardship. **BELOW:** Dr. Robert Smith's illustration of the relevance of Abraham and Isaac to the present would be difficult to forget.

Pastoral Lectureship Merits Student Interest

The annual pastoral lectureship series sponsored by the Bible and Theology department of the college featured some of our own instructors as well as prominent local theologians and Bible scholars. In the three chapel hours, expositions were given by the Dean of Students, philosophy department chairman, and speech instructor. Later meetings included two panel discussions, and lectures concerning stewardship, audio-visual aids, and the use of illustrations. The lectures were given by a local Alliance pastor, a political figure, and a professor from Bethel College and Seminary.





Students Exploited in Campus Work Project

ABOVE: Dr. Trouten in his blue-plaid shirt, is in the position of dubious distinction as he lays down guide lines concerning clean-up day activities. **BELOW:** Vacuum cleaners are good for dusting the books rarely taken from the shelves for public consumption.



8:05. The second bells rings. The dean rises to bring the students to attention.

"Each one of us is helping to keep the tuition costs of the college at a minimum by participating in this semi-annual campus clean-up day," and the students do not begrudge the few hours of physical labor in place of a morning's mental toil.

Every fall, and then again in the spring, the entire SPBC campus gets a thorough once-over as faculty and staff members rub shoulders with students in removing several months' accumulation of refuse. Several teams sneeze in the attic dust; even the fellas end up with dishpan hands; every window gets a licking on both sides. On clean-up day Mr. Miller is the "good guy" who brings around cookies for everyone, and Mrs. Root is the infamous one who assigns duties and doesn't leave a name off the list.

The lively day usually draws to a close with an innocent (?) water fight and a long line of hungry helpers in the spic 'n' span cafeteria.



ABOVE LEFT: Fellows don't hang out windows to clean the glass for nothing! Wonder what classes they are missing? **LEFT:** The last remnants of fall are scooped up to leave plenty of room for coming snow-storm. **BELOW:** You should ask Dick Gillick if Mr. Thompson gives as good lectures outside the classroom as he does in speech.



RIGHT: Jane Garwood and Betty Schmidt maintained their busy stations in the main lounge, coping with problems of the incoming conferees.



LEFT: Harry Landaw and some of his helpers puzzle over the question of housing an unexpected early conference-arrival. **ABOVE:** The sea of heads in the particularly crowded book store occasionally bobbed up a familiar face amid numerous strange ones.

Highschoolers Crowd SPBC Campus for Weekend

About 350 high-school students from Montana and the Dakotas, Iowa and Nebraska, Michigan and Wisconsin, and lots of points farther and nearer crowded onto the four-and-a-half acre SPBC campus for one weekend in April. Jay Kessler of Youth for Christ International was the speaker for the weekend campus life conference, and he was well-received by most of the conferees.

Now, no more I . . . but Christ in me was the Scriptural thought around which the conference was centered. In each meeting Jay emphasized the importance of living the true Christ-life; the presentations were relevant and meaningful.

Events of the weekend included a banquet, recreation, several rallies, a reception, singspiration, and special Sunday services.

RIGHT: Highschoolers were able to sneak a peek at what was to be expected in college classes. **BELOW:** Study rooms became Sunday school classrooms for the swollen campus membership.



RIGHT: Gracious queen of the Spring Banquet was Joyce Widtfeldt, escorted by Mr. Steve Goranson. **BELOW:** The court was composed of an attendant from each class: Mary Sander, freshman; Faith Boese, junior; Queen Joyce Widtfeldt; Ruth Mattson, senior; Jan Carlson, sophomore.



Joyce Widtfeldt Chosen Queen; Reigns Over Twilight Fascination



LEFT: Banquet entertainment was provided by recording artists John Bender, Jerry Nelson, and their wives. Mr. Nelson is at the piano.

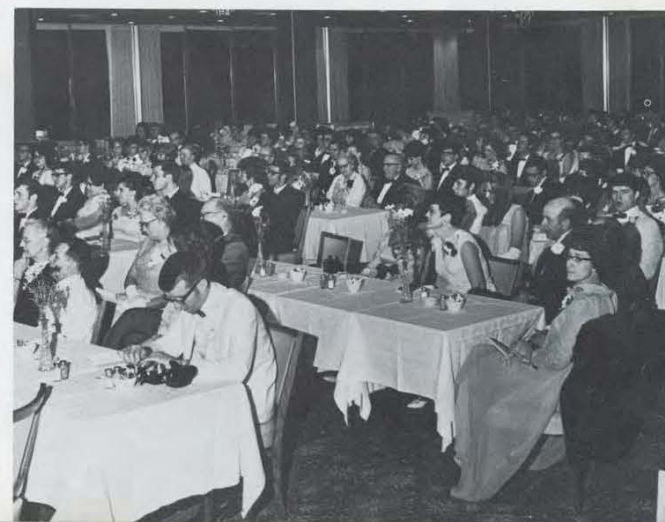
The social highlight of the year at St. Paul Bible College is always the spring banquet. Dayton's Skyroom in Minneapolis, provided the setting this year for "Twilight Fascination," May 10.

The most exciting moment of the evening was of course the announcement of the queen. Mr. Ferry had the privilege of this duty. After the four attendants, one from each class, had been escorted to the platform, the queen was named. Miss Joyce Widtfeldt made a very lovely and gracious monarch for a night. She was crowned

by last year's queen, Joyce Parker.

John Bender, Jerry Nelson, and their wives provided the entertainment for "Twilight Fascination," selecting several classical numbers as well as gospel songs for the banquet guests and the queen in particular. The Benders and Nelsons are talented recording artists. For Mr. Tewinkel, the banquet almost became a huge birthday celebration; and Mr. Rice was granted his wish for a fashion show featuring men's and ladies' formal attire.

RIGHT: A large number of faculty and staff members, as well as students, attended the spring banquet.





**Seniors Picnic,
Relax at Falls**



TOP: Senior retreat turned out to be a picnic at Taylor Falls — and picnics mean lots of good food for the class president and advisor. **ABOVE:** Even sophisticated seniors don't like to lose a baseball game — or did you get dust in your eye, Doug? **LEFT:** While the underclassmen sweat out finals, the graduates spend a leisurely day in practice for their final moment.



Musicale Marks Climax of 1968-69 Activities



ABOVE: The President's Breakfast for graduates and their families was a time when the class verse from Phil. 3 was considered. **LEFT AND BELOW:** Saturday night's Musicale is one of the last big events of the year. Special features include the marimba ensemble, solos and small group numbers, and mass choir music.





ABOVE: When Mr. Thompson forgets his mortarboard, it takes several people to get him ready for baccalaureate on time. **RIGHT:** The large sanctuary of Northbrook Alliance Church dwarfs Dr. Theodore Epp as he speaks to the graduates. **BELOW:** Everyone is in his place as the graduates proceed to their reserved pews.



Grads Achieve Degrees

For 31 seniors, May 25, 1969 was not just another Sunday; neither was it just the end of another school year; rather, May 25 this year marked the achievement of a goal hard-earned during the last four or more years. Graduation indicated the necessity to enter a new phase of life and challenge.

Dr. Theodore Epp, founder and director of Back to the Bible Broadcast, from Omaha, Nebraska, addressed the graduates during the baccalaureate service. The commencement address was given by Dr. H. T. Armerding, President of Wheaton College.

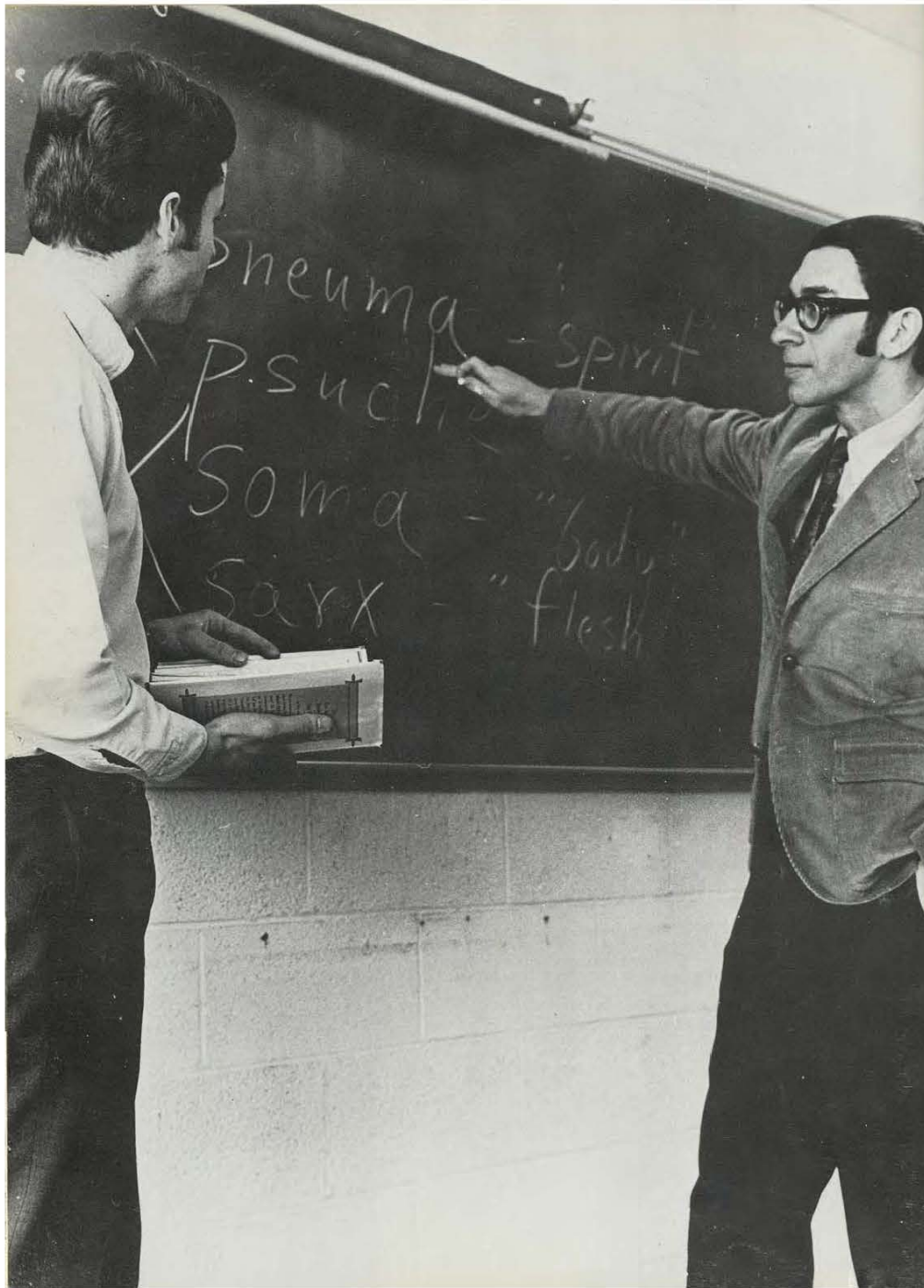


ABOVE LEFT: Juniors Joy Erickson and Pauline Arnold were selected by the senior class as their honor guard. **ABOVE:** College administrators and faculty members have an opportunity to display their degrees in all the paraphernalia of academic gowns.



ABOVE: Nelda Johnson receives her coveted diploma from the academic dean and president of the college. **LEFT:** As the moment of graduation approaches, the participants wait in various moods of apprehension, relief, and determination. **RIGHT:** Dr. Hudson T. Armerding left his president's office at Wheaton College to bring a challenging commencement message to SPBC graduates and assembled friends and relatives. Here he chats with Mr. Charles Eumurian, chairman of the trustee board of our college.





INTELLECTUALS



AND



INDISPENSABLES





ABOVE: Newlywed Mrs. Phyllis Braden joined the English department this year to keep busy while her husband attends seminary. **BELOW:** Mr. Stanley Larson examines a point with a student of World Literature.



Liberal Arts Nucleus

Education, as students know it today, is a far cry from that at the turn of the century. Schooldays then were described as "golden rule days of reading, writing, arithmetic, and hickory sticks," according to a popular tune of the time. Although the basic academics remain the same, they have inevitably expanded to include the knowledge that has been acquired since the early 1900's. Education continues to move onward with everything but the hickory sticks.

For the student at St. Paul Bible College, the freshman and sophomore years include many subjects categorized as liberal arts. These junior college courses are intended to give the students a basic foundation for further studies in an area of specialization which begins during the junior year. An education in these primary areas of study, combined with further knowledge and personal faith in God, contrib-



LEFT: Mr. Thompson looks prepared for any kind of prank from the "guys in the fifth row." **RIGHT:** Linda Hernandez demonstrates the theory that a good student can study under any circumstances.



Underlies Jr. College

utes toward the development of the mature Christian.

The reading and writing of the early 1900's may be found at SPBC in the revised and up-to-date classes of College Composition and World Literature. Mrs. Phyllis Braden and Mr. Stanley Larson share the responsibility of teaching freshman composition to regular and accelerated classes. Mr. Larson also instructs the literature course.

A full schedule of speech classes is handled by Mr. George Thompson. Greek and French are the foreign languages offered at SPBC. Many missionary candidates find the study of French helpful in learning other languages later. Miss Armia Heikkinen is in her first year of teaching French here. Mr. Vernon Olson teaches New Testament Greek for the benefit of ministerial students.



ABOVE RIGHT: To Mr. Vernon Olson, "It's all Greek to me" may be no cause for anxiety. **RIGHT:** The mystery of the card catalog is one that must be solved early in a college career; exhibit A: Dwight Williams. **LEFT:** Miss Armia Heikkinen retired from teaching missionaries' children in Vietnam and West Irian just in time to take up duties teaching French for some possible missions candidates.





ABOVE: The intricacies of a frog's anatomy require the full attention of lab partners Buzz and Larry, and even the occasional investigation of the instructor. **BELOW:** Mr. Robert Rice joined the SPBC faculty this year to help students explore the natural sciences.



ABOVE: When exams are done and the weariness catches up with him, no one begrudges Ron Buchholz a siesta in the main lounge.



Professors Elucidate Scientific Concepts

Science courses offered at SPBC include those in the categories of natural and social science. Zoology and Botany are taught by Mr. Robert Rice. Instructor of psychology, Mr. John Allen, aided students in their understanding of human behavior. Further studies in the sciences include educational psychology and an introductory course in sociology. As knowledge continues to increase at a phenomenal rate, it is vital that the Christian be familiar with these areas of study in order to be an effective witness in an intellectual world.



LEFT: If the library lounge were ever intended to be a place to study, the knowledge of such would come as a shock to many a passer-by. **BELOW:** For all his clowning and antics both in class and out, no one would question the fact that Doc Gates knows his philosophy.

"Doc" Unveils Details of Practical Philosophy

"What is truth?" one SPBC student asks another.

"What is reality?" the second queries in defense. Both probably have been stimulated to discuss these deep philosophical questions as a result of one of Dr. John Gates' lectures.

The philosophy major at SPBC is intended as an area of basic study for the individual who plans to continue his education with later seminary training. The applicability of philosophy to the area of religious thought is emphasized. Dr. John F. Gates is the chairman of the philosophy department at St. Paul Bible College.



RIGHT: Old and New Testament History classes bring most freshmen into the experience of Mr. Mason's lectures, where they find out that there is a lot more to a "Bible story" than at first appears. **BELOW:** Mr. Richardson is known for frequently drawing upon his own experiences in explicating Scriptural truths.



Bible, Theology, History Suit Ministers for Duty

Through the study of the Bible, man is better able to understand his relationship to God and to other men. Whether or not a student plans on seminary training, the instruction he receives in the Bible and Theology department gives him invaluable knowledge of the scriptures relating to every area of life. In addition to Bible study courses, practical theology, hermeneutics and pastoral methods courses are included in the curriculum. Mr. James Mason, chairman of the department, is assisted by Mr. Stanton Richardson, vice-president of the college.

History is offered at SPBC as a major area of study for preseminary students, or as a basis for graduate work in education, government, journalism, or business. The numerous courses offered in this department include history of modern civilization, the Waterloo of many unwary freshmen; American history, and renaissance and reformation history to mention a few. Chairman of the department, Mr. Joseph Tewinkel is assisted by Mr. Sidney Nelson.



LEFT: No one attends SPBC very long without spending many hours in the library.



LEFT: Facility with language and vast historical knowledge increase Mr. Tewinkel's height in the estimation of his students. **ABOVE:** Mr. Sidney Nelson commutes from Cambridge to the Cities for his history classes.



Echoes of Music Ministry Penetrate Total College

No division of studies at SPBC can claim more involvement of the entire student body than the music department. Although the majority of students participating in such organizations as Choral Club, Girls Choir, Male Chorus, or the concert band are not music majors, they do reap a particular satisfaction from the involvement.

For those who plan to pursue a career in this field, the department offers the Bachelor of Music degree with a major in music education. Students may take private lessons in voice, piano, organ, cello, trumpet or clarinet. Course work in the department curriculum includes history, theory, and practical studies in music.



ABOVE RIGHT: Music theory and the history of music classes occupy much of Mr. Ross Root's time. Here he studies 16th century polyphony (whatever **that** is!) **ABOVE:** Mrs. Jeanne Robinson gets stuck with all the busy work for the music department. **RIGHT:** Mrs. Carolyn Dean executes her mastery of the art on the marimba, one of her many fine musical talents.



ABOVE RIGHT: Mr. Joe Tewinkel has undertaken the direction of the Choral Club this year in addition to his duties in teaching history and Bible courses. **ABOVE:** Mr. Ray Schweizer is caught in an unusually calm moment. He is a very animated director of the Male Chorus and band, and an instructor in academic aspects of the music department as well. **RIGHT:** Mrs. Lucille Brown performs multiple duties as teacher, Girls Choir director, and chairman of the SPBC music department.



LEFT: Mr. Harold Brundin is high on the longevity list of St. Paul Bible College faculty members. Many a student soloist has profited from his instruction in voice.



RIGHT, ABOVE AND BELOW: Mr. Marvin Schwartz and his wife, Marvel, give private music instruction to many students at SPBC each week. Mrs. Schwartz runs through a selection on the piano, while her husband emphasizes a point with Dean Dainsburg.



Christian Ed Perspective Focuses on Individual

Unique posters for missionary conference, frequently changed bulletin boards in several classrooms, and Sunday School practice-teaching constitute essential parts of the Christian Education program at the St. Paul Bible College. Mrs. Marilyn Weldin is co-chairman of the department and bears a heavy teaching schedule. Dr. Donald Troun has been forced to relinquish much of his attention in the area of CE to devote time to duties as both Academic Dean and Interim President. Mrs. Claudine Hindmand helps to ease the burden by teaching a few hours a week amid her other responsibilities.

Instruction in Christian Education circumscribes a broad field in seeking to minister to the total person. Graduates of this curriculum are prepared to enter churches as directors of Christian education or youth workers. Many students take further studies in journalism, business, law, or elementary education upon earning the Christian Education degree from SPBC.

Minors in missions, history, or music may be completed within the Christian Education major. A broad Bible background is also a vital segment of the total curriculum.



TOP: Mrs. Marilyn Weldin assumes extra responsibilities in the department of Christian education, functioning as co-chairman and the major instructor. **ABOVE:** The duties of Dr. Donald Troun in the area of teaching have been limited to one course, due to multiple other major responsibilities. **LEFT:** Teaching is a secondary position for Mrs. Claudine Hindmand whose time is devoted primarily to being Dean of Women.

Missions Department Curriculum Features Cookies, Nurses, Study

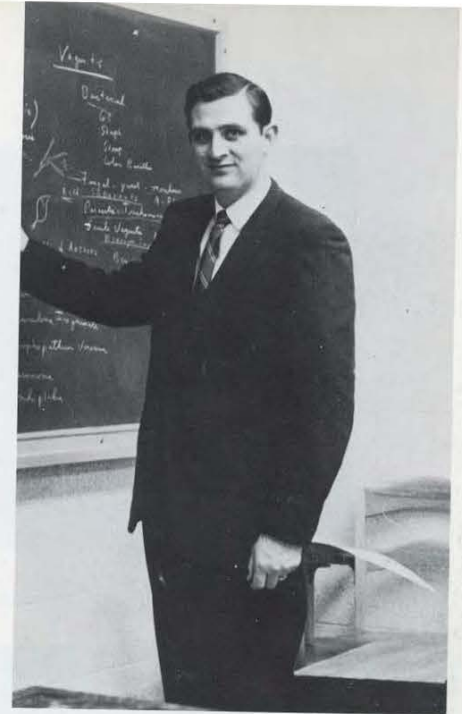


ABOVE LEFT: The office of missions department chairman William W. Conley is filled with various and sundry exhibitions of his interest in anthropology and experiences as a missionary in Indonesia. **ABOVE RIGHT:** In the same office, some joker plays a trick on Mr. Conley. **BELOW:** Coffee and cookies, giving injections and pulling teeth, all make for a very interesting missions seminar class for seniors in the department.



Through the centuries thousands of dedicated young men and women have acted upon Christ's command to "go, make disciples of all nations." Today, with the guidance of the foreign missions department of SPBC, such men and women are preparing to take up the task. A comprehensive view of missions equips the student for effective service for Christ under the Christian and Missionary Alliance or other boards.

Rev. William W. Conley heads the department of missions instruction, and handles a full schedule of classes. The major includes studies in Principles of Missions, History of Modern missions, linguistics, anthropology, and ethnology. The areas of Bible and theology are emphasized as well, in preparation for the task of reaching lost souls.



ABOVE RIGHT: Dr. Vincent Fromke conducts a special class for nurses in the missions curriculum. **ABOVE:** The nurses and instructor sometimes recess to the Nibble Nook during the evening class hour. The small number in the course permits a relatively informal atmosphere to pervade the group's work.



ABOVE: Dr. Donald Trouten carried a double load of responsibility this year, serving as both Interim President and Academic Dean of the college.



LEFT: As secretary to the president, Kay Hackney fills her time with making important appointments, typing, and filing. **ABOVE:** Student wife Mrs. Faith Brokopp keeps business in order in the academic dean's office.



Trustee Board Selects President

The major task of the Board of Trustees this year was the extremely important business of selecting a new president for the St. Paul Bible College. This duty was accomplished, and the New York headquarters of the Society approved the nomination of Rev. Arthur P. Johnston for the head of the college. The interim period during which the school has been without a regular president, has been very efficiently commanded by our Academic Dean, but the multiple responsibilities are more than enough work for two men. Dr. Trouten worked closely with the board and its chairman Mr. Charles Eumurian, in hastening the selection of the new president.



TOP: The Board of Trustees of the St. Paul Bible College is composed of the following members: (standing) Bruce Leastman, Bill Carr, Vincent Fromke, Frank Eckes, Keith Bailey, Phil Block, Harry Thiessen, Gilbert Esau, Herb Simmons, Emerson Thistlewood, Harry Jeuckstock, John Nussbaum; (seated) Brian Andreen, Milton Erdmann, Irving Malm, Charles Eumurian, Leo Berreth, Donald Trouten; (not pictured: Robert Cutbirth, Alvin Moser). **RIGHT:** Rev. Stanton Richardson fulfills responsibilities as vice-president of the college and Bible and theology teacher, as well as several other duties.



Every Grade Recorded Here!



TOP: Mr. Merton W. Tanner boasts possession of the longevity record among faculty, staff and administration. He now heads the Admissions and Records department. **LEFT:** Jan Allwine, a 1967 graduate of the college, completes her second year in the office. **ABOVE:** Estella Reich is faithful to her many duties in the Admissions and Records office of the college.

Business Office Cashes Checks, Sends Bills



ABOVE: Mr. Miller reigns from the treasurer's office — and debt-ridden students aren't always glad to see our congenial business manager! **LEFT:** Carrole Schaefer keeps careful track of necessary expenditures and not enough receipts. **BELOW:** Leigh Ann Spaulding can be credited with sending out numerous "Please pay at once" slips.





TOP: If someone gives Mrs. Claudine Hindmand, Associate Dean of Students, a "rough" time, she may be inclined to call on someone bigger for help. Don't look so innocent, Mr. Hedegard! **ABOVE:** Dorm Council president Sue Conner checks on dormitory activities with Mrs. Shirley Kallam, Assistant Dean of Women.

RIGHT: Ron Davis fulfills part of his duty in the men's dorm — confiscating an offending television set. **FAR RIGHT:** Sue Hanaford checks attendance sheets for required student meetings, among her other varied tasks. She is the one who hands out Christian service assignments and is Dean Shepson's secretary.



LEFT: A chat with Dean Charles W. Shepson could mean any of a number of things: a problem in homiletics, a personal testimony, a Christian service assignment, a disciplinary action, a time of blessing.

Deans Offer Guidance, Promote Understanding



College Promotion Grows

When it comes to the pocketbook, most people are very touchy. But the St. Paul Bible College is working on an ever-growing scale to help many individuals put that touchy money to good use. Investment in Bible colleges or in other areas of the Lord's work is one kind of stewardship that few people have considered. Mr. Ray Cook is developing this program of service, and also advises in drawing up wills, so that people can be assured that their earthly possessions will be properly and honorably disposed of when they are left behind.

Besides the stewardship services offered by the college, Mr. Russell Ferry keeps himself occupied with other areas of college development. As finances continue to come in for the new campus project, the reality of actual construction draws nearer.



ABOVE: Mr. Raymond Cook keeps himself busy with a great deal of traveling in relation to his job as a stewardship consultant, one of the newer services of the college. **LEFT:** The secretary to the development office finds time to get married in spite of her office work. She used to be Miss Elaine Dincau. **BELOW:** Mr. Russell Ferry is the one to see if you have a contribution for the development program at SPBC.



Public Affairs Department Handles Alumni, Promotion

Mr. Marvin Thompson doesn't have enough to do as Director of Public Affairs, so he adds to his responsibilities in the PR office, the compounded problems and duties of the alumni association. Mr. Thompson is the man with the smile for everyone, because that is a big part of public relations; he also has some PR materials to send along with every Christian service group on its travels; and he can always talk and talk and talk and talk about SPBC ... all to the good, of course.

The alumni association makes several financial investments in students each year. Giving out these scholarships seems to make Marvin Thompson's smiling face shine just a little bit more.



ABOVE: Mr. Marvin Thompson never enjoys himself quite so much as when he is giving away money in the form of scholarships for deserving students. **RIGHT:** Mr. Thompson also keeps his secretary, Diane Jensen, occupied with the business of the public affairs office.



Studious Researchers Plague Librarians



TOP RIGHT: Miss Marcelyn Smid supervises all aspects of the library purchases and procedures during her third year on the SPBC staff. **ABOVE:** Ellen Hedegard serves as full-time library assistant. **ABOVE RIGHT:** Full magazine racks are the focus of attention for many contemporary-minded students. **RIGHT:** What happened to the ABSOLUTELY NO TALKING sign? Earl and Rob pause between periods of intense concentration.



Bookstore Serves Students, Churches, Community



ABOVE: Rev. Harry Noll and Mrs. Edna Teeter, manager of the St. Paul Bible Bookstore, consult with a salesman for additional supplies. The conveniently-located store deals in everything from non-hallucinatory drugs to Sunday school supplies. **LEFT:** Mrs. LaVerne Iverson helps out with mailings, secretarial work, and sales. **BELOW:** Caught in the act! Steve Stumbo checks out some Bible teaching visual aids before shelling out the coin.





ABOVE: Brownie Zopf, consults with head cook, Mrs. Doris Lapp, and Junice Cahow helps to make ready for the inevitable lunch line. **RIGHT:** Esther Stoesz is making a potful of "something" to appease several hundred growling abdominal cavities. **BELOW:** Sharon Pfundheller, newest member of the cooking staff, estimates the amount of bread to be consumed at this meal.



LEFT: Mrs. Bernadine Root keeps a watchful eye over the dining hall each meal. In addition, her duties as housekeeping supervisor keep her busy and the buildings clean and neat.

Culinary Expertise Sates Young Appetites



ABOVE: The interminable lunch line is headed for a small cluster of hard-working waitresses and a hundred pounds of hamburger. **ABOVE RIGHT:** As the crowd in the dining hall thins at the end of the meal, it is apparent that the remaining people must have the biggest mouths — from eating too much or talking so much?



LEFT: "Good morning! St. Paul Bible College." is the standard response from Karen Parker. She acts as switchboard operator, receptionist, and source of all sorts of important information.

RIGHT: All the mimeographed and otherwise duplicated materials are processed by Mrs. Helen Cook, who is also in charge of the huge mailings our institution puts out from time to time. **BELOW:** The lovely state of Maine shipped SPBC a nurse this year. Judy Hiltz studies between her office hours.



Some People Are Indispensable!



ABOVE: Mr. Miller enjoys half a cup of coffee and a chat with Mrs. Joyce Thompson, efficient manager of the much-patronized Nibble Nook. **LEFT:** Mr. Bob Hahn has the largest office in the building — and it has everything in it! As superintendent of the grounds, Mr. Hahn is in constant demand when anything goes wrong. **BELOW:** "Mr. Fixit" Eastman putters about an antique radiator as one of a thousand daily chores of maintenance.

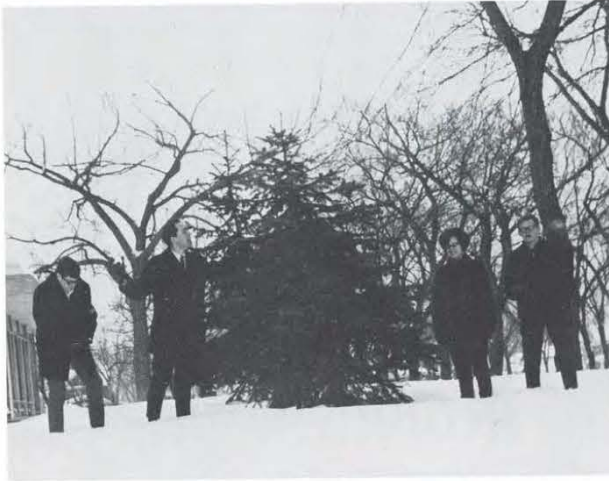




INDIVIDUALS



Seniors Greet Hard-Earned Degrees



ABOVE: Senior class officers thought this year's abundance of snow must be good for something! Vice-president, Ken Freeby; president, Warren Lightbody; secretary, Ruth Losli; treasurer, Paul Johnson.

Clyde Baker, B.A.
Sidney, Montana

John W. Brokopp, B.S., Missions
Lancaster, Wisconsin

Rich Brown, B.A.
Maitland, Florida

Susan Conner, B.R.E.
Wenatchee, Washington

Neil R. Dean, B.S., Missions
Peru, Illinois

Douglas M. Domier, B.S.,
Missions
St. Paul, Minnesota



Gwendolyn Franz, B. Music
Louisville, Kentucky

Kenneth B. Freeby, B.A., Bible
Anoka, Minnesota

Douglas H. Howard, B.A., Bible
North St. Paul, Minnesota

L. Arnold Hustad, B.A.
St. Paul, Minnesota

Nelda Johnson, Diploma
Santiago, Chile

Paul D. Johnson, B.S., Missions
Milaca, Minnesota

Bob J. Kallem, B.S., Missions
St. Paul, Minnesota

David D. Kendall, B.A.
Omaha, Nebraska

Warren W. Lightbody, B.A.
St. Paul, Minnesota

BELOW: Each senior has the opportunity of sharing his testimony in chapel. Neil Dean tells of the Lord's guidance in his life.



BELOW: Camera-shy Larry Myers has to look twice to see what happens when Mr. Thompson lectures before Mr. Thompson. How would you like to be your own critic as a speech professor?



Ruth A. Losli, B.S., Missions
Green Bay, Wisconsin

Keith Magee, B.A.
Lincoln, Nebraska

Ruth I. Mattson, B.S., Missionary
Nursing
Loomis, Nebraska



Karen Merrill, B.S., Missions
St. Paul, Minnesota

Yvonne E. Murphy, B.R.E.
Youngstown, Ohio

Donald D. Peterson, B.A., Bible
St. Paul, Minnesota



RIGHT: How to break out of the office through the air conditioner is a good question for Warren to ponder. **BELOW:** Doug Reed doesn't seem to realize that he is about to be pierced with a hypo for the benefit of the missions seminar class. **BELOW RIGHT:** John Brokopp was one of the first to give his senior testimony this year.



Eugene C. Post, B.A., Bible
St. Paul, Minnesota

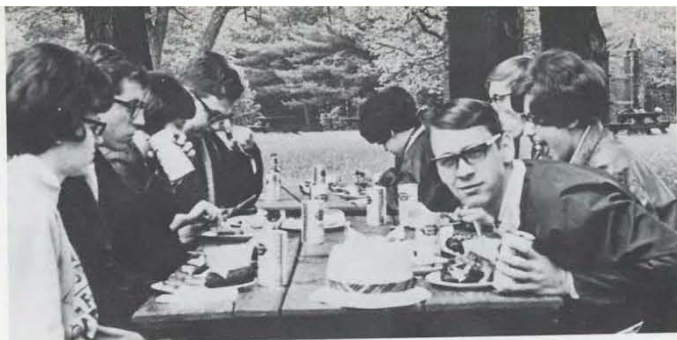
Roger H. Reibling, B.A.
Detroit, Michigan

Dorothy Ronzheimer, B.A.
Elmhurst, Illinois

Graduation Nears, Memories Linger



ABOVE LEFT: Being a switchboard operator puts one in constant contact with students day after day and hour after hour. **ABOVE:** In a rare moment when the hall is not filled with noisy collegians, Doug Howard finds respite with his strings. **LEFT:** If Rich Brown seems to be enjoying Mr. Thompson's office more than his own, it just might be true.



ABOVE: Senior Picnic means Paul Tyler can relax and do whatever he wants to — but there may be consequences for being a comic before a camera. **RIGHT:** Even a girl, if she's a senior, can do a right fair job of slamming that little plastic sphere across the table.



Seniors Take Day for Picnic

Darren L. Rurup, B.A.
Westmont, Illinois

Kae Russell, B.S., Missions
Omaha, Nebraska



Eldora Shantz, B.S., Missionary Nursing
Janesville, Wisconsin

Margaret Taylor, B.S., Missionary Nursing
Johnson City, New York



BELOW: John Brokopp turned chef for a few hours to help cook up a storm for the seniors — steaks, even!



Paul Tyler, B.S., Missions
St. Paul, Minnesota

Wanetta Wagoner, B.S., Missions
Hoopeston, Illinois

Lars H. Wilhelmsson, B.A.
Omaha, Nebraska



TOP: Whatever Dori and Gene are finding amusing, Warren has obviously missed. **RIGHT:** Arnie Hustad is proud to display his hard-earned degree. **ABOVE:** Practice for commencement must be hard on the graduates. None of them seem to be too lively at this point.



ABOVE: Junior class officers take time out for tobogganing: Linda Romin, secretary; Don St. John, president; Larry Spader, vice-president; Steve Goranson, treasurer.

Dick Abramson
Judy Anderson
Lola Anderson
Pauline Arnold
Bernard Badtke



Roger Barden
Maureen Baxter
Joy Biddle
Faith Boese
Boyd Bremner



Barb Brown
Loren Coalwell
Terri Conn
Sue Crawford
Howard Dantuma



Fred Dellinger
Karen Domier
Marilyn Eerdmans
Ken Ehresman
Sharon Eklof



Juniors Establish Goals, Begin Degree Efforts



ABOVE LEFT: Edna Hooper calls her off-campus house to make sure all goes well in her absence. **ABOVE RIGHT:** Linda, Sandie, Nancy, and Carol find the ping-pong table useful for other purposes. Wonder what the occasion is for the poster they're making.



Joy Erickson
Vicki Erickson
Dianne Esau
Bev Evans
Nancy Fisher



Bruce Flesner
Bob Foster
Steve Goranson
Dennis Gorton
Karen Grove



RIGHT: While Mr. Tewinkel was away on tour, Civ students sweated out student lectures by Faith Boese and Bruce Tanner, as well as some from various staff members.



Wade Grythe
Dan Hecker
Dale Heckman
Judy Hiltz
Edna Hooper

Terry Huffman
Bruce Humphrey
Rich Johnson
Wes Keller
Carol King

Linda Kondracki
Joy Kurrasch
John Lohman
Sheldon Lorensen
Barb Mansfield

Pearl Matson
Iris Magee
Bob Mallery
Ray Mayhew
Denise McDonald



Lois Merrill
Linda Monk
Gerry Murrock
Monty Newton
Dan Noll

Ray Olson
Bonnie Payne
Earl Peace
Sandie Puzia
Lee Ray

College Living Stresses Participation



ABOVE: Ray Mayhew participates in a chapel service by reading a Scripture portion. **ABOVE RIGHT:** Terri Tyler scans an *Alliance Witness* for interesting news on Africa. **RIGHT:** Christian service is a challenging aspect of SPBC life for Steve Goranson, Linda Romin, Betty Schmidt, and Bruce Flesner.



Search for Knowledge Intensified



ABOVE: There is standing room only when the ninety members of the junior class meet to discuss important activities.

Doug Reed
Linda Romin
Don St. John
Alyce Sawyer



Ken Severson
Lori Sherred
Connie Spader
Larry Spader



Grace Spurlin
Lynn Swanson
Bruce Tanner
Agnes Toenjes
John Walker



Willard Watson
Joyce Widtfeldt
Don Wiggins
Dan Winkelman
Debbie Zopfi



LEFT: Don Wiggins convincingly presents his platform for Student Senate president in the pre-election chapel. **BELOW LEFT:** You get service with a smile from Bernie Badtke, faithful to the weekly task of linen exchange. **BELOW:** A little humor interjected here and there makes a class meeting run smoothly for president Don St. John.



RIGHT: The sophomore class rounded up a hard-working crew of officers for this year: Walt Lowe, treasurer; Kathy McClain, secretary; Terry Kern, vice-president. Not pictured: Craig Strawser, president.

Claudette Abbott
Hank Babis



Janell Ballagh
Gary Benedict
Helen Berndt



Pat Bishop
Charlotte Black
Mary Ann Brock



Sandy Buchholz
Ina Bucholz
David Butler
Jan Carlson



LEFT: A big paper only gets done when Becky Folstrom types for Tom Franklin. **BELOW LEFT:** If there is any philosophy in an ice cream cone, Dr. Gates and David Butler will surely discuss its merits. **BELOW:** Phil Jones and several others interviewed grade school students for a special report on comic books.

Sophomores Return to Establish Meaningful Goals



Dianne Christensen
Debbie Craven
Dean Dainsberg
Darrell Dodge
Lee Downey

Virginia Epp
Gordon Fisher
Becky Folstrom
Tom Franklin
Jane Garwood

Dick Gillick
Diane Graff
Leonard Greenberg
Ramona Grellson
Gary Halbersma



Jon Hall
Elsie Henke
Don Hermann
Jane Hose
Linda Hunsicker



Jim Ireland
Jim Jensen



Ruth Johnson
Phil Jones



Joyce Kelm
Terry Kern



Sophomores Pursue



ABOVE RIGHT: Deeply engrossed in her work, Betty Schmidt joins other students for a day in the library.
RIGHT: Anxious to begin a new semester of intellectual pursuit, Bob Swanson awaits completion of the registration process.



LEFT: Three scholars absorb the attention of the class as Mr. Larson promotes the study of World Literature.

Educational Advance



ABOVE: Kathy McClain solos for part of a special inspirational chapel meeting.



Joel Klanderman
Harry Landaw



Becky Larson
Linda LeCompte



Walt Lowe
Kathy McClain



Cheryl McKenzie
Sharon McMahon
Liz McNeeley
Claude Meadows
Ken Mettler

Marilyn Moravec
John Morgan
Larry Morris
John Mowery



Mike Nylin
Bruce Olson
Sandy Olson
Dee Ott



Mary Paul
Paul Petersen
Roxanne Peterson
Liz Phillips



Sophomores Grasp Opportunities for Progress

BELOW LEFT: A mass invasion of the **Shield** office accompanies distribution of the '68 yearbook. **BELOW RIGHT:** "Efficiency" is his middle name. Harry Landaw makes short work of the dishes.



Rick Porter
Cheryl Raney
Linda Reigel
Gary Russell
Judy Scherrer



Betty Schmidt
Bonnie Schuppman
Bob Scott
Terry Smith
Nancy Sneary



John Steffey
Brad Stoldt
Craig Strawser
Linda Strawser
Bob Swanson



Jan Thomas
Terri Tyler
Joy Welsh
Sandy Werner
Sherri Wible



Dave Wilkins
Dwight Williams
Brent Wood
Linda Zweifel



ABOVE: Enjoying the nice weather of early spring are the freshman class officers: Roger Shantz, president; Joan Crawford, vice-president; Becky Herin, secretary; Wes Wiley, treasurer.



Jan Abramson
Iris Ackerson
Dennis Albert



Larry Anderson
Linda Anderson
Mike Anderson
Paul Backstrom



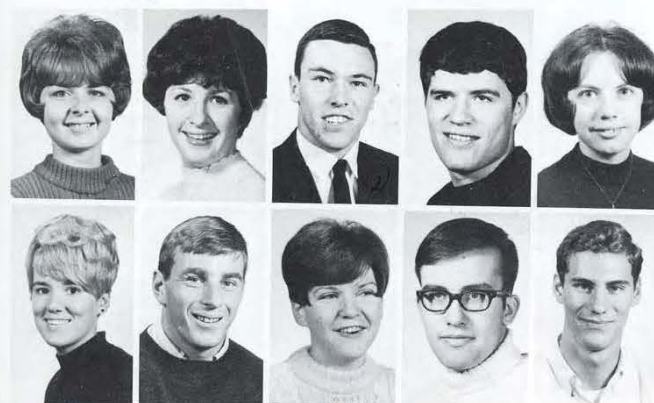
Barba Baltzer
Glenda Barr
Betty Benedict
Kay Berge



Frosh Intermingle Study and Fun



ABOVE: Dick Gillick and Jim Tuttle relax momentarily in the lounge. They appear to be studying — but there are **two** kinds of notes! **RIGHT:** Cozee Morgan dazzles all the boys with her new outfit, created especially for the Sadie Hawkins party.



Judy Bergman
Jane Bernard
Dick Birr
Don Block
Ardythe Boden

Joyce Brown
Ron Buchholz
Nancy Butler
Chuck Cameron
Ivan Carlson

Steve Carlson
Cathy Carnefix
Candy Clark
Jean Clark
Dave Cotner



Becky Cowles
Jean Crawford
Joan Crawford
Debby Crowe
Dave Cutbirth



OTH, Missions Comprise First Challenges

Don Dague
Lyman Dale
Carol Ehresmann
Ruth Ellingson
Elaine Erickson



Rod Erickson
Ann Eumurian
Marsha Fifield
Ken Fox
Phyllis Gable



René Matzke and Carol Hineman spend a free hour in profitable reading in the main lounge.



Doug Gettle
Joyce Goodwin
Nancy Greenberg
Dennis Groeneweg



George Halama
Bev Halterman
Cheryl Hansen
Helen Harding
Kathy Harris



LEFT: It looks like a regular gab session of freshmen in the holiday-bedecked Nibble Nook.

Sue Harrison
Norm Hartman
Mike Heath
Howard Hedegard



Becky Herin
Lynn Hess
Carol Hill
Carol Hineman





ABOVE: Freshmen are noted for their attentiveness (?) during a lecture in History of Modern Civilization.

Ellen Hoffman
Bill Hoffman
Pat Hoy
Jared Huber



Lonnie Jacobson
Kevin Jenson
Jim Jessen
Gayle Johnson



LEFT: Neil Miller entertains himself and others with an impromptu piano recital in the main lounge.



ABOVE: In a rare moment of leisure, Ken Fox discovers the perfect surroundings for a serenade — a prof's office!

Frosh Seek Academic Fulfillment



Jim Johnson
Steve Johnson
Steve Jones
Linda Kottke



Judy Kurrasch
David L. Larson
David W. Larson
Cliff LaTourelle



Peggy Leffler
Bethel Levin
Linda Lewis
Dave Lincoln



Terry Livingston
Sharon Lundstedt
Rhoda Mathre
Darlene Matson

After All Is Said and Done, Yet Remains Some Time for Fun

René Matzke
Paul McKibben



Brian Medcalf
Joyce Meerdink



Neil Miller
Ed Molzon
Cozee Morgan
Ernie Murphy



Redina Nelson
Robert Nohr
Dennis Parker
Nancy Pata



Sue Perhus
Ray Peters
Nancy Phillips
Kathy Ploeger



Joanne Reichow
Pat Reigel
Wayne Reimer
Ami Reitsma
Sandy Ritchie

LEFT: Now, Brenda, you really aren't **that** anxious to study; are you? **BELOW:**
"Are you kidding? I'm not eating another facefull of that concoction!"



Fred Royle
Effie St. Cyr
Bob St. Cyr
Mary Sander
Brenda Schaa

Kathy Schneider
Karen Scott
Donna Severson
Dee Shaffer
Roger Shantz

Life-Molding Processes Continue

RIGHT: Steve Zopfi is a one-man student janitor and teachers' antagonist.

Cathy Shie
Marion Sias



Jane Simmons
Bob Stern



Dave Swanson
Loretta Swanson
Diane Swedberg
Venus Thompson



Julie Trautman
Jim Tuttle
Ron Tveitbakk
Jacque VanKekerix



Karyl Waters
Kathy Werner
Terry Wigginton
Wes Wiley



Dennis Worden
Pam Worden
Janet Young



Sandy Young
Shari Zenor
Steve Zopfi



Janis Tyler
August 22, 1950 — January 2, 1969

Through this life,
But once I'll trod
And I count it all loss
For the cause of God.
When life is over
For me on earth
May my death
Cause someone's birth,
Not of body, but of soul.

—written by Jan Tyler
shortly before her Homegoing

Who's Who in American Colleges & Universities?



ABOVE: Named this year in **Who's Who in American Colleges and Universities** were seniors Wanetta Wagoner, Rich Brown, and Gwen Franz; juniors Dale Heckman and Faith Boese.

RIGHT: The Junior Chamber of Commerce Court of Honor lauded five St. Paul Bible College seniors: Lars Wilhelmsson, Rich Brown, Eldora Shantz, Margaret Taylor, and Doug Domier. Ruth Mattson was the graduate with the highest grade point average on her cumulative college record.



Graduates Honored by Jay Cee's

For the first time, graduates of the St. Paul Bible College were invited, along with graduates of other Twin Cities colleges and universities, to participate in a program of honor sponsored by the Junior Chamber of Commerce. Five of our top seniors were chosen for this honor. The formalities of the evening affair conveyed the congratulations and good wishes of the city to graduating young people, for their ambitious achievement.





INVOLVEMENT





Missionary Meetings Present Challenge, Promise

ABOVE: The Winter missionary cabinet was composed of Linda Romin, Carol King, Gwen Franz, Ken Severson, Dale Heckman, and Neil Dean. Dale was the president of this group.
ABOVE RIGHT: Rev. Myron Voth and Rev. Alfredo Smith, president of the Argentine national church, visited with us for one missionary meeting.



LEFT: Members of the spring missionary cabinet are Ray Olson, Barbara Brown, Larry Spader, Bonnie Payne, Ray Mayhew, and Joy Erickson. The president for this term is Ray Mahew. **BELOW:** In an unusual meeting in the packed-out room 102, a linguist demonstrated some of the things a missionary needs to know.



LEFT: Last fall the missionary cabinet was made up of president Dick Abramson, Terry Conn, Sue Conner, Dan Noll, (not pictured: Cindy Brown, John Brokopp). **ABOVE:** Students are always interested in seeing the people missionaries work with, and they were dramatically introduced to a couple such people at one of the early meetings of the year.



Christian Service Takes Many Forms at SPBC



The department of Christian service at SPBC includes assignments as varied as the people participating in them. The students may take part in musical ensembles, as teachers, preachers, or what-have-you.

Many SPBC graduates recall with nostalgia their many trips to rest homes, visiting the elderly and those confined to bed. Others with musical talent form quartets or trios, and some travel quite extensively. Sunday school teachers learn more than their students, and thus accomplish a double purpose through their CS assignments.

LEFT: One quartet is ready to leave on one of their frequent week-end C.S. assignments: Bruce Flesner, Nancy Greenberg, Betty Schmidt, Steve Goranson, and pianist Carol Hineman. **BELOW:** Much of the summer was spent in touring for two musical groups.



Many an Alliance preacher presently in this district gained his first pulpit experience under the auspices of the Christian service department. Who would have guessed, listening through their first agonized attempts at preaching, that these "boys" would some day move many hearts as they open the Word of God to their own congregations?

Clearly, the CS assignments are as much instructive and practical experiences as they are a service to the college and to the Lord. Another branch of possible service and training is in the newly reorganized Fishers of Men group. Using Paul Little's **How to Give Away Your Faith**, this group of students is getting involved with the responsibility of witnessing to others of the reality of Christ.



ABOVE LEFT: The Cosmolights included missionary kids Pauline Arnold, Terry Conn, Faith Boese, Phil Jones, Steve Jones, and Bob Swanson. **ABOVE:** One of the most popular quartets this year was a Choral Club group including Don St. John, Don Wiggins, Terry Kern, and Denny Gorton. **BELOW:** When Fishers of Men was reorganized, some of the guiding spirits were Margaret Taylor, Doug Howard, Ray Mayhew, Gwen Franz, Don St. John, and Ken Severson.



RIGHT: Just before SPBC's fall missionary conference, members of each prayer band are asked to prepare some sort of display to represent their particular area of interest.



ABOVE: Some of the first and second semester prayer band presidents were Pearl Matson, Ken Severson, Bruce Tanner, Ray Mayhew, John Brokopp, Terry Smith, Joe Newman, Doug Howard, Steve Stumbo, Brent Wood, Doug Domier, Judy Anderson, Grace Spurlin. **RIGHT:** Petitions concerning the Lord's work in Vietnam, Laos, Cambodia, and Thailand are offered each Thursday morning by a group of concerned students.



Prayer Bands Present Missionary Challenge

Everyone at SPBC prays for the missionaries at least once a week for a half-hour, and hopefully more. But the special time set aside each week for this purpose helps to bring the most real part of missions closer to the students. Needs of missionaries and nationals on the fields throughout the world, as well as those in the homeland, are presented for the prayerful attention of the students. Nine prayer bands are grouped to include the area of interest of everyone so that the world is covered and each student involved in the challenge.

Concert Band Accompanies Famous Trumpeter



TOP: When everyone is present, the instrumentalists directed by Mr. Ray Schweizer fill the platform and spill onto the main floor of the chapel. **ABOVE:** Particularly honored was this ensemble which accompanied Carole Reinhart during a special presentation in the Twin Cities.

Senate Promotes Social Interaction

According to Senate president Rich Brown, the specific goals set for this year were "social interaction" and "structural organization." The success or failure of such designs might be difficult to measure by conventional standards, but no doubt we had one of the most active student representative groups in several years. Sometimes it seemed as though Student Senate was involved in **everything** — but it was a hardworking group with a great deal of varied responsibility and some ingenuity. This year's notable innovations included the first winter banquet, and election of a homecoming queen.



ABOVE: Senate President Rich Brown stresses social interaction as a major goal set for this school year. **RIGHT:** From the looks of this usual Tuesday afternoon Senate meeting, it must be very exciting! **BELOW RIGHT:** Surrounding the president on the platform are all the officers introduced to the student body.



ABOVE: Debbie Crowe, Linda Anderson, Ann Eumurian, Becky Larson, and Nancy Butler accompany the Girls Choir with flutes.



ABOVE: Other Girls Choir instrumentalists include Cheryl McKenzie, Joyce Meerdink, Shari Eklof, Donna Severson, Sandy Wemer, and Sue Perhus.

GC Presents Missions

Under the direction of Mrs. Lucille Brown, the Girls Choir completed another year of service to the Lord. Their full schedule of concerts during the spring was followed by a tour of eight states during the first weeks of summer vacation.

The music of the Girls Choir includes several religious classics as well as hymns of praise and adoration. The concert traditionally closes with the challenging mission of the church today.

BELOW: Members of the 1968-69 Girls Choir were Kay Berge, Linda Anderson, Joan Crawford, Liz McNeely, Diane Swedberg, Cheryl McKenzie, Lynn Hess, Effie St. Cyr, Carol Ehresmann, Joyce Meerdink, Venus Thompson, Brenda Schaa, Ann Eumurian, Debbie Crowe, Marsha Fife, Judy Bergman, Ruth Carr, Becky Larson, Jan Carlson, Sandy Young, Liz Phillips, Ardythe Boden, Linda Kottke, Phyllis Gable, Rhoda Mathre, Ruth Ellingson, Kathy Ploeger, Becky Herin, Sue Perhus, Donna Severson, Judy Anderson, Mary Ann Brock, Dorothy Ronzheimer, Linda LeCompte, Shari Eklof, Darlene Matson, Judy Miller Anderson, Bev Evans, Ina Bucholz, Diane Graff, Gwen Franz, Sandy Wemer, Jane Bernard, Jane Garwood, Shirley Nelson, Jane Simmons, Jane Hose, Becky Folstrom, Grace Spurlin, Nancy Butler.





ABOVE: The Male Chorus is directed by its founder Mr. Ray Schweizer, and has performed locally on several occasions. Its members are: Kevin Jensen, Wes Wiley, Lenny Greenberg, Jared Huber, George Halama, Bob Stern, Phil Jones, Walt Lowe, Howard Dantuma, Dick Birr, Jim Jensen, Roger Shantz, Lyman Dale, Bernard Badtke, Dave Cotner, Dean Dainsberg, Doug Gettle, Gene Post, Doug Reed, Fred Royle, Ken Mettler, Ken Fox, Ed Molzon, Neil Miller, Denny Groeneweg.



ABOVE: Besides directing the Male Chorus and band and other ensembles, Mr. Schweizer teaches several classes in the music department. **RIGHT:** Several other instrumentalists accompany the Male Chorus during its concerts.

Male Chorus Goes to Wadena

The relatively young Male Chorus took a weekend trip to Wadena as one of the highlights of their concert season this year. They also had many concerts in the Twin Cities area churches throughout the spring, and participated in several events with the other two college choirs.

Adding to the volume of the men's voices, the band frequently accompanied the vocal group with its complementary variety.



ABOVE: The voice of Gary Moore was featured in one of the first of the cultural events of the school year 1968-69. **RIGHT:** All who attended the organ recital of Dr. Pearson felt that his mastery merited the time spent. **BELOW:** The climax of the cultural series was in the performance of Thom Hardwick and Nathalie Haag, held in Simpson Church and well-attended.





ABOVE: The St. Paul Bible College Choral Club members were Betty Schmidt, Kae Merrill, Virginia Epp, Janet Young, Roxie Peterson, Ruth Mattson, Sandy Olson, Cathy Carnefix, Barb Brown, Sandy Puzia, Linda Romin, Linda Zweifel, Iris Ackerson, Kae Russell, Dianne Esau, Kathy McClain, Becky Pugh, Mary Paul, Lois Merrill, Joyce Brown, Joy Biddle, Nancy Greenberg, Sue Crawford, Dee Ott, Linda Strawser, Dwight Williams, Craig Strawser, John Mowery, Mike Anderson, Bruce Flesner, Warren Lightbody, Dale Heckman, Ken Severson, Dennis Albert, Bob St. Cyr, Dave Cutbirth, Don St. John, Dennis Gorton, Gary Russell, Wayne Reimer, Ray Olson, Steve Goranson, Terry Kern, Don Wiggins, Don Weins, Bob Nohr, Dave Swanson. **BELOW:** Choral Club members didn't come back from their spring tour suffering from malnutrition.



Choral Club Voices Praise on Steps of Capitol



LEFT: Parts of Choral Club concerts included instrumental accompaniment. Some of the brass was used by Dwight Williams, John Mowery, Ray Olson, Dale Heckman, and Don Wiggins.

The 1968-69 Choral Club of the St. Paul Bible College experienced a most exciting and exhausting concert season. The highlight of the year was of course the tour, which took the SPBC musicians as far as Washington, D.C. For many of the students, this was the first time in the nation's capital, and they were thrilled by the unusual opportunity to give a concert standing on the steps of the Capitol.

Mr. Tewinkel completed his first year as director of the Choral Club in a really remarkable season. One of the most memorable parts of the concert program was a rendition of the creation story in a Negro spiritual-type drama. Steve Goranson narrated the vision of the Creator in a moving presentation. Much of the music used this year was written or arranged by the director, and all very well expressed by the choral group.



LEFT: Director of Choral Club this year was Mr. Tewinkel, who did an outstanding job in this capacity. **ABOVE:** Dave Swanson accompanied the quartet composed of Dwight Williams, Virginia Epp, Linda Strawser, and Gary Russell as they practiced for a special.

Student Committees Help Guide Campus Living

Probably the most difficult thing a SPBC student could be asked to do, would be to impose disciplinary measures upon another student of his own peer group. In any normal life situation that demands cooperative living, however, rules must be established and must be enforced — and peer-group decisions are better respected than authoritarian demands.

The student conduct committee is headed by the vice-president of the Student Senate, and includes members from each class. One of the problems it attempted to handle this year was a

recurrent parking lot disturbance. The lot was patrolled and "tickets" were issued, including fines for offenses.

The Women's Dorm Council was headed by Sue Conner, and included representation from each class. Duties of dorm council members were eased by responsibilities taken by floor counselors placed throughout the dormitory, but the council was involved with representing the students to the deans. In the men's dormitory, John Mowery led the representative council.



ABOVE: The dignified membership of the Student Conduct Committee includes representatives of each class, and is chaired by the Student Senate vice-president. Present are Lois Merrill, junior; Paul Tyler, senior; Debbie Crowe, freshman; Bob Kallem, chairman; and Tom Franklin, sophomore.



ABOVE: Members of the women's dormitory council were (seated) Linda Romin, Sue Conner, Barb Brown; (standing) Jane Garwood, Nancy Phillips, Dorothy Ronzheimer, Virginia Epp, Becky Folstrom, Joy Biddle, Marsha Fifield, Diane Swedberg, Wanetta Wagoner, Diane Graff. **BELOW:** On the men's council were Roger Shantz, Don Wiggins, Kelly Wolcott, Dale Heckman, John Mowery, Dwight Williams, Jim Jensen, and Dick Birr.





Yearbook Construction Demands Time, Interest



FAR LEFT: Being editor of the *Shield* involves a lot more than editing, as Faith Boese learned this year. **LEFT:** Margaret Taylor and Rene Matzke are shown hard at work on their assigned sections of class pictures and organizations, respectively.



LEFT: Kae Merrill worked on the student life section near the beginning of the book, and found that it took more hours than expected. **BELOW:** Cheryl McKenzie helped out with some of the necessary typing in producing the yearbook.



FAR LEFT: Bruce Humphrey took most of the pictures for the *Shield*, developed and printed them; he also did the work of business manager, but found the two jobs slightly time-consuming. **LEFT:** The first task of the yearbook staff was to distribute '68 books. Howard Hedegard also helped with the photography.



INDEFATIGABLES





ABOVE: SPBC's cheerleaders help to move the passive audience into enthusiastic vocal participation in the basketball game. **LEFT:** The squad captain is Dorothy Ronzheimer, in her fourth year as a pep commissioner.

Cheer Group Encourages Spirit, Pep



LEFT: The cheerleaders demonstrate their form; four freshman students made the squad, which is headed by a senior.



RIGHT: Leading St. Paul Bible College cheering sections this year were (standing) Jean Crawford, Kathy Werner, Joan Crawford; (kneeling) Gayle Johnson and Dorothy Ronzheimer.

Girls BB Faces 4 Fights

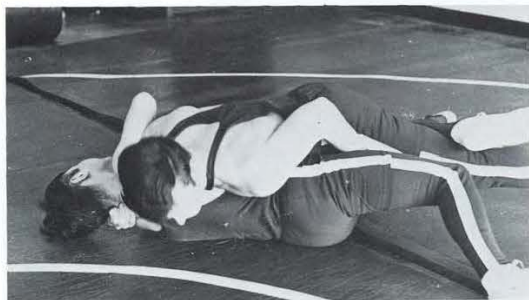


LEFT: Members of the girls basketball team practiced hard during the season. **BACK ROW:** Coach Sharon Tobin, Becky Larson, René Matzke, Pam Worden, captain; Mary Ann Brock, Ruth Carr. **FRONT ROW:** Bev Halterman, Sue Harrison, Liz McNeeley, Joy Erickson, Helen Berndt.

	SPBC	Opponent
Concordia	19	16
Concordia	22	23
Bethel	12	28
Lakewood	10	30
Met. State	11	22
Wisc. State	2	26
Wisc. State	0	45
Pillsbury	13	26
Lakewood	10	24
Northland	12	28
Northland	10	25



ABOVE: SPBC's wrestling team consisted of the following members: **FRONT ROW** — Kevin Jensen, John Lohman, Bob Stern, Cliff LaTourelle; **BACK ROW** — Wes Wiley, Mike Anderson, Ken Fox, Walt Lowe. Not Pictured: Don Block, captain; John Brokopp, and Don Weins. **BELOW:** Turning the tables on his opponent, Bob executes a reversal and goes for a pin.



RIGHT: Walt Lowe demonstrates one of the techniques which made him one of SPBC's most successful grapplers this season.



Grapplers Demonstrate Strength in Opening Victory

Room 102 was converted from a sophisticated classroom to the scene of less than sophisticated wrestling work-outs nearly every night of the week until the season ended. Under Coach Dave O'Brien's vigorous leadership, the grapplers exerted a great deal of concentrated effort in mastering new techniques. Reversals, half and full nelsons, and headlocks were the order of the day as the wrestlers prepared to meet their foes.

The season record proved a disappointing 1-11. The sole victory was over Concordia with a score of 19-16 on the opponent's home floor.

John Lohman, Don Block, and Walt Lowe were the most successful wrestlers this year. Since most of the veterans will be returning next season, we look forward to greater conquests by our matmen in 1970.

BELOW: John Lohman needs to pin his opponent's shoulders to the mat for a full second to score the desired five points.



RIGHT: Be it basketball, wrestling, or a fistfight, the guy on the bottom is losing, wouldn't you say?



Trophies and Letters Awarded



ABOVE: Walter Lowe receives an award for his outstanding performance on the wrestling mat this season. **RIGHT:** Paul Petersen accepts a trophy conveying the appreciation for his basketball contributions.



Wrestlers, Basketball Players

ABOVE LEFT: Rich Brown was the only senior letterman who went out for basketball this season. **ABOVE:** Manager Norm Hartman is surrounded by the team: Jim Koroly, George Halama, Paul Petersen, Ray Olson, Denny Worden, Bob Swanson, Dick Birr, and Dwight Williams. **BELOW:** The court behind the main building saw lots of practicing during the free time of basketball team members.



	SPBC	OPPONENT
Alumni	55	61
Dordt	47	110
Faith Baptist	64	52
Open Bible	75	52
United Theological Sem.	63	72
Golden Valley Lutheran	55	80
Dr. Martin Luther	61	84
Lakewood J. C.	62	67
North Central	51	70
Anoka-Ramsey J. C.	52	100
Hamline	30	83
Pillsbury	60	94
Concordia	66	122
Concordia	50	106
Pillsbury	66	104
Lakewood J.C.	70	75
Dordt	44	97
Minnesota Business	71	83
Minnesota Bible	74	55
North Central	70	77
Faith Baptist	76	52
Minnesota Business	65	71
Dr. Martin Luther	93	89



ABOVE: With grim determination written all over his face, Olson poises to shoot; teammate Paul Petersen apparently feels confident of Ray's prowess and backs off. **LEFT:** Team captain Bob Swanson grasps the ball and moves into the offense.



BELOW: Ray Olson maneuvers around groping hands and lays in another bucket for the Crusaders.



Crusaders Score Victorious Climax in Final Encounter

The Crusaders basketball team wrapped up this season with a luke-warm 5-18 record. Despite height disadvantage and lack of facilities on campus, the fighting cagers refused to give up hope.

With only one senior, Rich Brown, on the roster, underclassmen composed the backbone of the team. Midway through the season a shuffling of positions was necessary to replace injured sophomore Paul Petersen as center. The Crusaders fought for a climactic victory in the final game over Dr. Martin Luther College. With four players fouled out, the SPBC team remained on top scoring 93 points to Luther's 89.

Throughout the season, individual standouts were distributed among all four classes.



ABOVE RIGHT: Restless benchwarmers have their noses in the game; Porter is ready to pounce at the least provocation from the game floor. **ABOVE:** Two alumni aggressively battle over their own ball while the rest of the players move in for the kill.



LEFT: When shoes are off and other gear thrown on the ground, the golfers are ready to scythe the grass. **BELOW:** Howard Hedegard, Dean Dainsberg, and Dick Birr wait their turns while Jim Johnson swings at a little white ball full of rubber bands.



Intercollegiate Golf Swings Six Matches



ABOVE: Some of the most active golfers were Dean Dainsberg, Larry Myers, Dick Birr and Dwight Williams. **SERIES BELOW:** Dick and Dwight approach the green, putt toward the flag, and survey the possibilities of filling the hole.



Editor's Acknowledgements

A tremendous sigh of relief escapes me as I realize the **1969 Shield** is completed. I'm certain that I learned nearly as much of practical value in my basement office cubicle as I did in any one classroom — and that is not intended to deprecate classroom learning. Snowed under sheafs of blue-graphed layout sheets and a dozen orange grease pens, staring bleary-eyed at hundreds of 3 1/2x4 1/2 black-and-white photos, swallowing countless aspirins and gallons of black coffee . . . what is to be learned? Things like organization, cooperation, patience, persistence, and how to cope with a thousand large and small annoyances, disappointments, frustrations, and sometimes impossibilities and failures. Fortunately for you and me and anyone else concerned with the SPBC annual, I was not alone in this "educational experience." Several others had to learn right along with the editor about yearbook production in particular. I want to express my sincere gratitude to the following people who participated in producing the **1969 Shield**.

Steve Jones — Sports editor, who was most cooperative and conscientious; my personal apologies for not being pictured on the staff page

Rene Matzke — organizations editor, who did a lot of work on one of the most difficult sections, in spite of problems beyond her control

Marilyn Moravec — academic and personnel editor, one of the most dependable co-workers I had, and who I regret was not pictured on the staff page

Kae Merrill — student life editor, whose job actually began before school started and extended until graduation, frequently hampered by lack of pictures

Margaret Taylor — class pictures editor, the speediest layout planner I ever met

Bruce Humphrey — frequently regretted his ambition to be both photographer and business manager for the **Shield**; more often than not, frustrated by the urgent requests of the lady editor: "But we must have these pictures (or ads) immediately!"

Helen Harding — suffered the dubious fortune of rooming with a night-owl editor

Cheryl McKenzie — did much of the typing for the first section

Howard Hedegard and **Doug Gettle** helped with photography

Gary Russell and **Craig Strawser** helped with layout for the first section

Dave Cutbirth helped with copy-writing for the first section

Lynn Hess and **Bev Halterman** helped with Marilyn's section

Cathy Shie and **Cozee Morgan** helped Steve with caption-writing especially

My personal thanks to all the others of you who spent time doing little things that really help. Even small services and offers of assistance were encouraging to a harried editor.

To **Mr. Conley** I owe a special thanks. As **Shield** advisor, he was forced to listen to the many woes of the relatively untrained editor. He also contributed many of the best pictures in the book.

Other members of the faculty and staff were most cooperative as well. Thank you.

My gratitude extends to **Mr. Burt Hedstrom**, American Yearbook Company representative, whose work was complicated by my lack of training, and without whose services there would have been no yearbook.

Holiday Studios is to be noted for taking all the class pictures.

Last but not least, we appreciate the contributions of our financial sponsors:

Full page sponsors: The Senior Class of the St. Paul Bible College, 1968-69

The Junior Class

The Sophomore Class

The Freshman Class

Quarter page: C&MA Church, 726 State, Osage, Iowa 50461

Central Church of the C&MA, 2820 — O St., Lincoln, Nebraska

Omaha Gospel Tabernacle of the C&MA, 2006 Douglas St., Omaha, Nebraska

Eighth page: Continental Baking Company, 1200 Third Ave. S., Minneapolis, Minnesota

Mid-Town Barber Shop, 634 N. Snelling Avenue, St. Paul, Minnesota

Thanks so much to all of you.

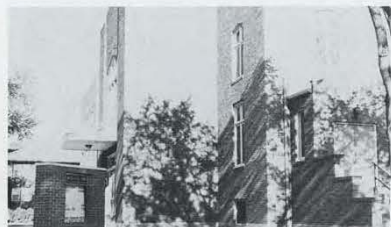
1969 Shield

Faith Boese, Editor



ADVERTISING

CONGRATULATIONS
Class of '69



A. B. Simpson Memorial Church

Christian and Missionary Alliance

1632 Charles Avenue
St. Paul, Minnesota 55104
646-5835



HAMLIN SUPERETTE

The Convenient Corner Store
Hamline and Minnehaha

Good Students Save 25%
State Farm Mutual



Hamline & Thomas
645-6401

For products and services
you can depend on



David L. Olson

MIDWAY STANDARD SERVICE

an American Oil Motor Club station
1347 University Avenue
6 AM — 10 PM 646-9573

ED'S SHELL



Hamline & Thomas
TOWING SERVICE

646-9019

CONGRATULATIONS
Class of '69

from
Nowthen Alliance Church
Rev. Walter Frankenberg, Pastor

The friendly church in Nowthen, Minnesota



A warm welcome awaits you at
HAZEL PARK ALLIANCE CHURCH

E. 3rd St. & Howard
1 Block W. of 3M Research Center

Rev. Merle Stombaugh, Pastor

BARR'S FLOWERS

Since 1934

- **Twin City Deliveries**
- **Flowers Telegraphed**

University at Snelling

646-7941



Complete Line of
Domestic and Steam Coals
646-6511

GREAT LAKES
COAL & DOCK CO.

2102 University Ave.

St. Paul, Minn

HAMLIN HARDWARE & PAINT



Benjamin Moore Paints

646-4049

Snelling and Englewood

Congratulations, Class of 1969!

You have just joined the ranks of the
Alumni Association of St. Paul Bible College



Honored this year were Miss Ruth Jones, for whom a new scholarship has been named, and Mrs. Edna Teeter, Alumna of the Year.



st. paul BIBLE college

1361 ENGLEWOOD AVE., ST. PAUL, MINNESOTA 55104



GOD'S WORD ...
the cornerstone
for tomorrow ...



**Congratulations,
Class of 1969
from
Northbrook Alliance Church**

6240 Aldrich Avenue North
Minneapolis, Minnesota 55430
Phone 561-2664



Pastor: Rev. Paul F. Bubna

**Sincere Congratulations
to the Class of '69**

The Western District
of the
Christian and Missionary Alliance

District Office
5525 Hartman Avenue Omaha, Nebraska 68104

Rev. H. E. Jueckstock
District Superintendent

"A Place of Service for you in the Great Plains"

JACK'S
Decorated
Ice Cream

Specialists in Fancy Ice Creams
Every Day Retail Delivery Service
Moulds for Every Occasion

Come in and see our display:
Jack's Decorated Ice Cream Co.
1337 Minnehaha Ave. W.,
St. Paul, Minn. 644-0903

Phone 646-4211

JOHN'S BARBER SHOP
Men, Ladies, and Children's
Haircuts

Minnehaha Avenue
Near Hamline

St. Paul, Minn.
55104

Hazel Park Cycle Center

**HOWARD HAWKINS
ARTHUR ENGSTROM**

2250 White Bear Avenue at Hwy. 36

St. Paul, Minnesota 55109

Phone 777-1323

SCHWINN BICYCLES
Sales and Service



The Christian and Missionary Alliance

...The Sufficiency of Christ

The Christian and Missionary Alliance was organized as a missionary society in 1887 with the expressed intent of its founders to do "God's work in God's ways".

In many cities and towns of the United States and Canada, the downtown congregations and the neighborhood churches of The Alliance are still pressing forward in the interests of world evangelization, witnessing to the sufficiency of Christ and demonstrating New Testament missionary principles.

The overseas ministry of the Alliance is carried on in Argentina, Brazil, Chile, Colombia, Ecuador and Peru in South America; in Congo, Gabon, Guinea, Ivory Coast and Mali-Upper Volta in Africa; in Israel and the Arab Lands in the Near East; in Indonesia, Japan, West Irian, the Philippines, and Taiwan, and on the Asiatic mainland, India (both Gujarati and Marathi areas), Viet Nam, Cambodia, Laos, Thailand and China-Hong Kong.

In this overwhelming missionary task, The Christian and Missionary Alliance has accepted responsibility for reaching 72,800,000 souls with the Gospel of Christ—before it is too late!

GREETINGS TO THE CLASS OF 1969

The Officers and the International Headquarters of

**THE CHRISTIAN
AND MISSIONARY ALLIANCE**

260 West 44th Street

New York, N.Y. 10036

In Canada: 1699A Bayview Ave., Toronto 17, Ontario

Best Wishes
and
Sincere Appreciation
for the
Assistance Furnished Us
during the past year



MONTGOMERY WARD

1400 University Avenue
St. Paul, Minn.

EARL'S
"MISTER"
PIZZA
Pizza
Spaghetti
Subwiches

Eat In
Take Out
Delivery Service

467 N. Snelling
645-2522

1748 N. Lexington
488-5585

Closed Sundays — The Lord's Day

LLOYD'S PHARMACY

Accurate
PRESCRIPTION SERVICE
SCHOOL SUPPLIES
720 N. Snelling

RONALD KEEPSAKE JEWELERS

(Now Two Convenient Locations)
Put the Sparkle on Her Hand and in Her Eye
433 Wabasha at 7th — CA 4-7131
A Few Doors From Riviera in St. Paul
Open every weekday until 9:00 P.M.

224 Highway 61
White Bear Lake
Open Friday until 9:00 P.M.

The Only Keepsake Jeweler in St. Paul



The Guidance Insurance Agency

1425 Taylor Avenue.,
St. Paul, Minn.

Auto
Fire
Life
Health
Business
Church



CLIFF MALONE

645-9824
Your guide to complete protection

for that
special occasion
remember

Lindig
Midway
Florist

1875 W. Larpenteur Ave.

H
O
L
I
D
A
Y
S
T
U
D
I
O
S

Photographic
Portraiture
in
Natural Color
Oil
Black & White
225-7473

858 University Avenue

"Large enough to serve you . . .
Small enough to know you."

HAMLIN CLEANERS

1-hr. dry cleaning service
6 days a week

Snelling & Minnehaha

St. Paul, Minn.

Midway 4-5885

MIDWAY TYPEWRITER EXCHANGE

736 N. Snelling Ave.



Home of world-famous Hermes typewriter

WESTLUND'S
Provisions Inc.

Quality Meats, Fish and Poultry
Quick Freeze Service and Frozen Foods

597 N. Snelling Ave. (Midway) St. Paul 4, Minn.
Locker Rentals — Midway 4-8621

EXTRA CARE MAKES

Sanitary
FARM DAIRIES

PRODUCTS
EXTRA GOOD

For Service Phone 224-4991

ST. PAUL BIBLE BOOKSTORE

1361 Englewood Avenue, St. Paul, Minnesota 55104

Member of Christian
Booksellers Association
and
National Association
of College Stores

Mrs. Edna Teeter, Manager

Rev. Harry L. Noll, Assistant



— BIBLES — BOOKS — RECORDS — SUPPLIES —

Robert Paul TV



TV — RADIO — STEREO — TAPE RECORDERS

- Sales
- Service
- Rentals

572 No. Snelling
St. Paul, Minn.
Phone 645-0341

WESTERN PENNSYLVANIA DISTRICT

The Christian and Missionary
Alliance

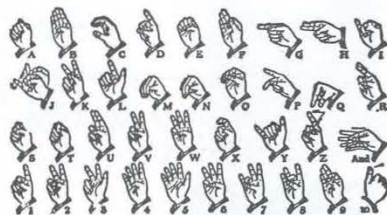
F. Paul Henry, District Superintendent
C. R. Ellenberger, Assistant

P.O. Box 429
Punxsutawney, Pennsylvania 15767

Opportunities for Pastoral Placement

The DEAF

A largely overlooked mission field — at home and abroad. Why not include them in your **Prayer, Church-meeting, Sunday School** and **Missionary** outreaches?

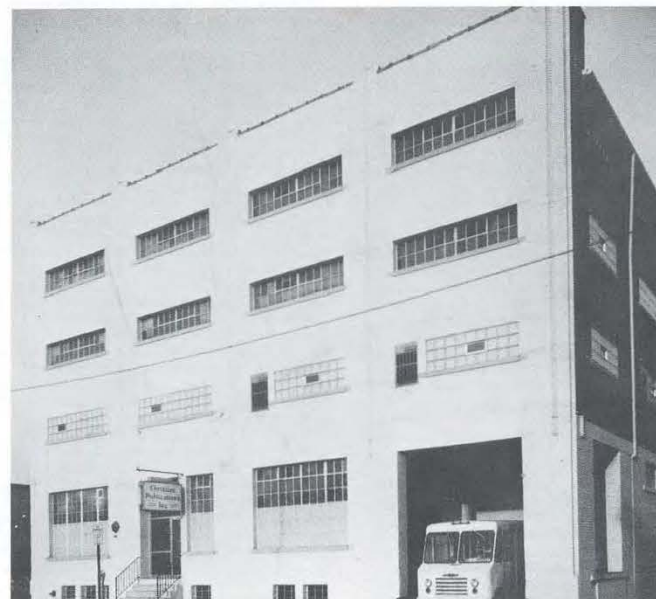


AMERICAN ALPHABET USED BY THE DEAF

Christian Mission for Deaf Africans

P.O. Box 1452
Detroit, Michigan 48231

CHRISTIAN PUBLICATIONS, INC.



Your source of supply for

**BOOKS
BIBLES
THE ALLIANCE WITNESS
SUNDAY SCHOOL SUPPLIES**

When in the vicinity of Harrisburg, you are invited to visit our offices and store.

25 SOUTH TENTH STREET

HARRISBURG, PENNSYLVANIA 17101

When in New York, why not visit our Book Store

690 EIGHTH AVENUE

NEW YORK CITY 10036

Student Directory

Abbott, Claudette, 1333 Edmund, St. Paul, Minn., 76
 Abramson, Jan, Cokato, Minn., 82
 Abramson, Richard, 3113 36th Ave. S., Mpls., Minn., 70, 96
 Ackerson, Iris, Rt. 2, Northfield, Minn., 82, 104
 Albert, Dennis, 412 Neil St., Sandusky, Ohio, 82, 104
 Allen, William, 1742 Charles Ave., St. Paul, Minn.
 Anderson, Judith, 1857 Fairview, St. Paul, Minn., 70, 100, 102
 Anderson, Judy Miller, 1696 W. Minnehaha Ave., St. Paul, Minn.
 Anderson, Larry, 5347 Riverview Rd., Mpls., Minn., 82
 Anderson, Linda, Sister Bay, Wisc., 82, 102
 Anderson, Lola, Rt. 3, Benson, Minn., 70
 Anderson, Michael, 2823 N. Hazelwood, St. Paul, Minn., 82, 104, 116
 Anderson, Wayne, 12 Linden Lane, Landfall Village, St. Paul, Minn.
 Arnold, Pauline, 1361 Englewood Ave., St. Paul, Minn., 33, 70, 99
 Atwood, Gary, 1440 Minnehaha, St. Paul, Minn.
 Babis, Henry, 919 N. Long Ave., Chicago, Ill., 76
 Backstrom, Paul, Maddock, North Dakota, 82
 Badtke, Bernard, Rt. 1, Box 31, Orfordville, Wisc., 70, 75, 103
 Baker, Clyde, Box 189, Rt. 1, Sidney, Montana, 64
 Ballagh, Janell, Burwell, Nebraska, 76
 Baltzer, Barba, Route 2, Erhard, Minn., 82
 Barden, Roger, Rt. 1, Pardeeville, Wisc., 70
 Barr, Glenda, 900 8th Ave., Charles City, Iowa, 82
 Baxter, Maureen, PO Box 151, Huron, Ohio, 70
 Benedict, Betty, 1317 Englewood Ave., St. Paul, Minn., 82
 Benedict, Gary, 1317 Englewood Ave., St. Paul, Minn., 76
 Berge, Kay, 714 Main St., Oconto, Wisc., 82, 102
 Bergman, Judy, Box 107, Evansville, Minn., 83, 102
 Bernard, Jane, 3003 N. 21st St., Superior, Wisc., 83, 102
 Berndt, Helen, RD 2, Box 356, Johnstown, Pa., 76, 115
 Bernstrom, Kathleen, 1724 Carl St., St. Paul, Minn.
 Biddle, Joy, 5132 N. 63rd St., Milwaukee, Wisc., 70, 104, 109
 Birr, Richard, Rt. 2, Oconto Falls, Wisc., 83, 103, 109, 119, 122, 123
 Bishop, Patricia, 1151 Idylwild Dr., Lincoln, Neb., 76
 Black, Charlotte, 221 Guilford Rd., Hoyt Lakes, Minn., 76
 Bfack, Donald, 1619 Merryview Lane, Hibbing, Minn., 83
 Boden, Ardythe, 392 Hugel Ave., Midland, Ont., Canada, 83, 102
 Boese, Faith, 407 N. 6th Ave., Upland, Calif., 28, 70, 72, 99, 110
 Bremner, Robert B., 606 N. Main, Wheaton, Ill., 70
 Brock, Mary Ann, Rt. 2, Gillett, Wisc., 76, 102, 115
 Brogger, Doris, Rt. 1, Cass Lake, Minn.
 Brokopp, John, 816 N. Albert, St. Paul, Minn., 64, 66, 68, 100
 Brown, Barbara, 1418 Druid Isle Rd., Maitland, Fla., 14, 70, 97, 104, 109
 Brown, Cindy, 317 E. Larpenteur, St. Paul, Minn.
 Brown, Joyce, Box 489, Jenkins, Kentucky, 83, 104
 Brown, Richard, 1418 Druid Isle Rd., Maitland, Fla., 64, 67, 92, 93, 94, 106, 119
 Buchholz, Ronald, 696 Grand Ave., Apt. 5, St. Paul, Minn., 38, 83
 Buchholz, Sandra, 696 Grand Ave., Apt. 5, St. Paul, Minn., 76

Bucholz, Ina, 722 4th St. SW, Watertown, S. D., 76, 102
 Butler, David, Rt. 5, Box 243, St. Croix Beach, Minn., 76, 77
 Butler, Nancy, 4216 N. 91 St., Omaha, Neb., 83, 102
 Cameron, Charles, 1700 East 24 St., Mpls., Minn., 83
 Carlson, Ivan, 567 Co. Rd. J., New Brighton, Minn., 83
 Carlson, Janice, Riverwood, Shafer, Minn., 28, 29, 76, 102
 Carlson, Juanita, 1040 Roma Ave., St. Paul, Minn.
 Carlson, Stephen, 3204 W. Owasso Blvd., St. Paul, Minn., 84
 Carnelfix, Catherine, 5020 Evans St., Omaha, Neb., 84, 104
 Carr, Ruth, 3461 Oaklawn Ave., Columbus, Ohio, 102, 115
 Casperson, Ira, 820 N. Albert, St. Paul, Minn.
 Chapman, John, 829 Clayland St., St. Paul, Minn.
 Christensen, Dianne, Rt. 1, Box 43, Stanchfield, Minn., 77
 Clark, Candace, 4501 Washburn S., Mpls., Minn., 84
 Clark, Jean, 2317 Wingfield Ave., Anoka, Minn., 84
 Coalwell, Loren, 1685 Taylor, St. Paul, Minn., 70
 Conn, Terrel, 3036 Villa Drive, Toledo, Ohio, 70, 96, 99
 Conner, Susan, 707 Kittitas, Wenatchee, Washington, 52, 64, 96, 109
 Cotner, David, 2714 Midwood, Toledo, Ohio, 84, 103
 Cowles, Rebecca, Fern Ave., Nyack, New York, 84
 Craven, Deborah, Box 201, Ogden, Iowa, 77
 Crawford, Jean, Mountain Lake, Minn., 14, 84, 115
 Crawford, Joan, Mountain Lake, Minn., 82, 84, 102, 115
 Crawford, Susan, 904 E. Smith St., Springfield, Mo., 70, 104
 Crowe, Deborah, Box 175, Bakerstown, Pa., 84, 102
 Cutbirth, David, Rt. 2, Greenfield, Iowa, 84, 104
 Dague, Donald, PO Box 235, Bertha, Minn., 84
 Dainsberg, Dean, 310 19th St. N., Benson, Minn., 44, 77, 103, 122, 123
 Dale, Lyman, 2408 N. St. Albans, Roseville, Minn., 84, 103
 Dantuma, Howard, 853 N. Fry St., St. Paul, Minn., 70, 103
 Dean, Neil, 1396 Thomas Ave., St. Paul, Minn., 13, 64, 65, 96
 Dellinger, Frederick, 500 Hellam St., Wrightsville, Pa., 70
 Dodge, Darrell, Rt. 4, Box 299, Chippewa Falls, Wisc., 77
 Domier, Douglas, 1302 Hartford Ave., St. Paul, Minn., 64, 93, 100
 Domier, Karen, 1302 Hartford Ave., St. Paul, Minn., 70
 Dohrmann, Mary, 1428 Como Ave., St. Paul, Minn.
 Downey, Lee, 41 W. Arlington #305, St. Paul, Minn., 77
 Eerdman, Marilyn, Rt. 1, Cambridge, Minn., 70
 Ehresman, Ken, 905 Burlington Ave., Billings, Mont., 70
 Ehresmann, Carol, Box 414, Belgrade, Mont., 84, 102
 Eklof, Sharon, 1973 Barclay St., No. St. Paul, Minn., 70, 102
 Ellingson, Ruth, 3148 22 Ave. S., Mpls., Minn., 84, 102
 Epp, Virginia, 1825 S. 24th St., Lincoln, Neb., 77, 104, 105, 109
 Erickson, Elaine, 2128 Wyoming, Billings, Mont., 84
 Erickson, M. Joy, 2128 Wyoming, Billings, Mont., 33, 71, 97, 115
 Erickson, Rodney, 1412 Andover Blvd. NW, Anoka, Minn., 84
 Erickson, Vicki, Drayton, N. Dak., 71
 Esau, Dianne, Mountain Lake, Minn., 71, 104
 Eumurian, Ann, 2040 Loren Rd., St. Paul, Minn., 71, 104
 Evans, Beverly, 334 Liberty St., Franklin, Pa., 71, 102
 Fifield, Marsha, Arlee, Montana, 84, 102, 109
 Figi, Paul, 10717 France Ave. S., Mpls., Minn.
 Fisher, Gordon, 101 Williams St., Charles City, Ia., 77
 Fisher, Nancy, Rt. 2, Hook Road, Crestline, Ohio, 71, 87
 Flesner, Bruce, RR 1, Tracy, Minn., 71, 73, 98, 104
 Folstrom, Rebecca, 209 E. Ash St., Sisseton, S. Dak., 77,

102, 109
 Foster, Robert, 1467 Carroll, St. Paul, Minn., 71
 Fox, Kenneth, Rt. 4, Fraternity Ch. Rd., Winston-Salem, North Carolina, 84, 87, 103, 116
 Franklin, Thomas, PO Box 205, Maple Plain, Minn., 77, 108
 Franz, Gwendolyn, 2115 Reynolds Ln., Louisville, Ky., 65, 96, 99, 102
 Freeby, Kenneth, 851 Fry St., St. Paul, Minn., 64, 65
 Gable, Phyllis, Rt. 1, W. Salem, Ohio, 84, 102
 Garwood, Jane, Amelia, Nebr., 26, 77, 102, 109
 Gerkovich, Joyce, 328 6th Ave. S., St. Paul, Minn.
 Gettle, Douglas, RR 1, Elberon, Iowa, 85, 103
 Gillick, Richard, 4677 N. 42nd St., Milwaukee, Wisc., 25, 78, 83
 Goodwin, Joyce, 2200 Irving Ave. N., Mpls., Minn., 85
 Goranson, Stephen, 711 E. Hawthorne Ave., St. Paul, Minn., 70, 71, 73, 98, 104
 Gorton, Dennis, 3422 Rudolph Rd., Eau Claire, Wisc., 71, 99, 104
 Graff, Diane, 2177 S. 94th St., West Allis, Wisc., 78, 102, 109
 Greenberg, Leonard, Rt. 2, Box 124, Anoka, Minn., 78, 103
 Greenberg, Nancy, Rt. 2, Box 124, Anoka, Minn., 85, 98, 104
 Grelson, Ramona, 407 Scott Dr., Cottage Grove, Minn., 78
 Groeneweg, Dennis, Balaton, Minn., 85, 103
 Grove, Karen, 1205 Coal St., Pittsburgh, Pa., 71
 Grythe, Wade, Rt. 2, Badger, Minn., 72
 Gustafson, J. Phil, 5208 Gifford Ave., Cleveland, Ohio
 Hagler, Carl, 13128 Woodin Ave., Chardon, Ohio
 Halama, George, Washkish, Minn., 85, 103, 119
 Halbersma, Gary, RR 1, Box 68, Browerville, Minn., 78
 Hall, Jon, RFD, Webster, Iowa, 78
 Halterman, Beverly, Box 72, Osage, Iowa, 85, 115
 Hansen, Cheryl, Stockholm, S. Dakota, 85
 Harding, Helen, 971 Priscilla Lane, Ashland, Ohio, 85
 Harris, Kathleen, 835 S. Mt. Prospect, Des Plaines, Ill., 85
 Harrison, Susan, 1112 W. Hazel Ave., Lima, Ohio, 85, 115
 Hartman, Norman, 9707 Northridge Dr., Valley Station, Ky., 85, 119
 Hatch, Andrew, 1737 Thomas Ave., St. Paul, Minn.
 Heath, Michael, Pintara Farm, Rt. 2, Hugo, Minn., 85
 Hecker, Daniel, 1976 Iglehart Ave., St. Paul, Minn., 72
 Heckman, Dale, 4251 N. 60th St., Milwaukee, Wisc., 15, 72, 96, 104, 105, 109
 Hedegard, Howard, 1407 Hewitt Ave., St. Paul, Minn., 85, 110, 122
 Henke, Elsie, 809 8th Ave. SE, Aberdeen, S.D., 78
 Herin, Rebecca, 305 N. Harvey, Ferguson, Mo., 82, 85, 102
 Hermann, Richard, 703 N. Garden St., Lake City, Minn.
 Hernandez, Linda, 228 Wellington, Harrow, Ont., Canada, 37
 Herrmann, Donald, RR 2, Greenville, Ohio, 78
 Hess, Lynnette, 4607 Harding Rd., Kenosha, Wisc., 85, 102
 Hill, Carol, 868 Post Rd., Muskegon, Mich., 85
 Hiltz, Judith, 4 Brookside Dr., Auburn, Maine, 60, 72
 Hinerman, Carol, 111 Bowers St., Clauson, Mich., 84, 85, 98
 Hoffman, Ellen, RR 1, Ashton, Ill., 86
 Hoffman, William, 108 Clark Ave., White Bear Lake, Minn., 86
 Hooper, Edna, 5206 Winding Way, Sarasota, Fla., 71, 72
 Hose, F. Jane, Rt. 2, Hagerstown, Md., 78, 102
 Hough, Terrie, 15889 Paulding Blvd., Brook Park, Ohio
 Howard, Douglas, 2697 E. 8th Ave., No. St. Paul, Minn., 30, 34, 65, 67, 99, 100
 Hoy, Patricia, 5916 2 1/2 St. NE, Mpls., Minn., 86

Huber, Jared, Box 6, Potter, Wisc., 86, 103
 Hubin, April, 1642 Sherburne, St. Paul, Minn.
 Hubin, Gary, 1642 Sherburne, St. Paul, Minn.
 Huffman, Terry, Rt. 7, Box 415, Pensacola, Fla., 72
 Humphrey, T. Bruce, 1731 Thomas Ave., St. Paul, Minn., 72, 110
 Hunsicker, Linda, RD 2, Box 518, Greene, New York, 78
 Hustad, L. Arnold, 2255 N. Snelling, St. Paul, Minn., 65, 69
 Ireland, James, 3729 Northern Pike, Monroesville, Pa., 78
 Jacobs, Dean, 4367 Unity Ave., Robbinsdale, Minn.
 Jacobson, Lonnie, Rt. 1, Box 183, Maple Plain, Minn., 86
 Jensen, James, 208 8th Ave. SW, Aberdeen, S.D., 78, 103, 109
 Jensen, Steven, RR 1, Tyler, Minn.
 Jensen, Kevin, Santiago, Minn., 86, 103, 116
 Jessen, James, 1811 S. Main St., Elmhurst, Ill., 86
 Johnson, Gayle, Rt. 1, Pine River, Minn., 14, 86, 115
 Johnson, G. Richard, Box 182, Chetek, Wisc., 72
 Johnson, James, 715 N. Sibley, Litchfield, Minn., 87, 122
 Johnson, Judith, 528 4th Ave., Sibley, Iowa
 Johnson, Linda, RR 2, Paynesville, Minn.
 Johnson, Nelda, 1437 W. Minnehaha Ave., St. Paul, Minn., 33, 65
 Johnson, Paul, 1437 W. Minnehaha Ave., St. Paul, Minn., 64, 65
 Johnson, Roger, 5802 McKinley, Omaha, Nebraska
 Johnson, Ruth, 5802 McKinley, Omaha, Nebraska, 78
 Johnson, Stephen, 717 E. Geranium, St. Paul, Minn., 87
 Jones, Philip, Box 382, Redwood Falls, Minn., 77, 78, 99, 103
 Jones, Stephen, Box 382, Redwood Falls, Minn., 87, 99
 Jueckstock, Richard, 806 Holly, St. Paul, Minn.
 Justice, Robert, 2206 N. Lexington, St. Paul, Minn.
 Kallem, Allen, 1361 Englewood, St. Paul, Minn.
 Kallem, Bob, 1361 Englewood, St. Paul, Minn., 13, 65, 108
 Keller, Wesley, Rt. 1, Box 41 A, Superior, Wisc., 72
 Kelm, Joyce, Rt. 4, Janesville, Wisc., 78
 Kendall, David, 2505 Territorial Rd., St. Paul, Minn., 65
 Kern, Terry, Hannah, N. Dakota, 76, 78, 99, 104
 King, Carol, 241 7th Ave. SE, Osseo, Minn., 71, 72, 96
 Klanderman, Joel, 1813 S. Willkie St., Appleton, Wisc., 79
 Kondracki, Linda, 1126 S. Layton Blvd., Milwaukee, Wisc., 71, 72
 Koroly, James, 3411 19th, Wyandotte, Mich., 119
 Kottke, Linda, 405 Jefferson Ave., N. Mankato, Minn., 87, 102
 Kurrasch, Joy, 774 Aldine, St. Paul, Minn., 72
 Kurrasch, Judy, 774 Aldine, St. Paul, Minn., 87
 Landaw, Harry, 383 West North, Wooster, Ohio, 26, 79, 80
 Larson, David L., Rt. 1, Barron, Wisc., 87
 Larson, David W., Rt. 2, Box 106, Milaca, Minn., 87
 Larson, Rebecca, 344 Juniper Ave., Cottage Grove, Minn., 79, 102, 115
 LaTourelle, Clifford, Bena, Minn., 87, 116
 LaTourelle, Mary, Bena, Minn., 87
 Lawrence, David, 1113 Eighth St., Port Huron, Mich.
 LeCompte, Linda, 25505 Farmbrook Rd., Southfield, Mich., 79, 102
 Leffler, Margaret, 99 S. Main St., Churchville, New York, 87
 Levin, Bethel, 4500 Minnetonka Blvd., Mpls., 87
 Lewis, Linda, Rt. 1, Box 71, Spooner, Wisc., 87
 Lightbody, Warren, 103 Bates Ave., St. Paul, Minn., 62, 64, 65, 66, 104
 Lincoln, David, 1827 Birchwood, Troy, Michigan, 87

Livingston, Terry, 31 Hiawatha Ave., Westerville, Ohio, 87
 Lohman, John, 4949 N. 76 St., Milwaukee, Wisc., 72, 116, 117
 Lorensen, Sheldon, Strathcona, Minnesota, 72
 Losli, Ruth, 1169 Reed St., Green Bay, Wisc., 64, 66
 Lowe, Walter, Box 121, Apple Creek, Ohio, 76, 79, 103, 116, 117, 118
 Lundstedt, Sharon, Rt. 2, Stanton, Iowa, 87
 Magee, Iris, 1079 Front, St. Paul, Minn., 72
 Magee, Keith, 1079 Front, St. Paul, Minn., 66
 Mallery, Robert, Rt. 1, B. Columbia Falls, Mont., 72
 Manselle, Donald, Rt. 1, Wadena, Minn.
 Mansfield, Barbara, Box 111, 215 Broadway, East Liverpool, Ohio, 72
 Manske, Georgia, 821, N. 56, Lincoln, Nebraska
 Mathre, Rhoda, RR 2, Newark, Ill., 39, 87, 102
 Matson, Darlene, Clear Lake, Wisc., 87, 102
 Matson, Pearl, Rt. 2, Clear Lake, Wisc., 72, 100
 Matson, Ruth, RR 1, Loomis, Nebr., 28, 66, 93, 104
 Matzke, V. Rene, 2920 E. Madison, Des Moines, Iowa, 84, 88, 111, 115
 Mayhew, Raymond, 51 Chandos Rd., Willesden Gr., London NW 2, England, 72, 73, 97, 99, 100
 McClain, Kathleen, 6830 W. Lincoln Ave., West Allis, Wisc., 14, 15, 76, 79, 104
 McDonald, Denise, 323 E. Square Lake Rd., Troy, Mich., 72
 McKenzie, Cheryl, 2068 Suburban Ave., St. Paul, Minn., 79, 102, 111
 McKibben, Paul, Rt. 4, Foley, Minn., 88
 McMahan, Sharon, 3190 E. Dodge Rd., Clio, Mich., 79
 McNeeley, Elizabeth, 913 N. Cass, Wabash, Ind., 79, 102, 115
 Meadows, Claude, 1288 Hubbard Ave., St. Paul, Minn., 38, 79
 Medcalf, Brian, 16725 Canterbury Dr., Minnetonka, Minn., 88
 Meerdink, Joyce, RR 1, Orchard, Iowa, 88, 102
 Merrill, Karen, 806 Holly, St. Paul, Minn., 66, 67, 104, 111
 Merrill, Lois, Rt. 1, Osseo, Minn., 14, 73, 104, 108
 Mettler, Kenneth, RFD 3, Amery, Wisc., 79, 103
 Miller, Neil, New Richmond, Minn., 17, 88, 103
 Milner, Suzan, 1607 Hubbard Ave., St. Paul, Minn.
 Molzon, Edward, 14910 Chardon Windsor, Huntsburg, Ohio, 88, 103
 Monk, Linda, Rt. 1, Box 161, Plover, Wis., 73
 Moravec, Marilyn, 2152 N. 61 St., Wauwatosa, Wisc., 80
 Morgan, Cozette, 2224 Spear St., Logansport, Ind., 83, 88
 Morgan, John P., 2224 Spear St., Logansport, Ind., 80
 Morris, Larry, 1707 Mangum St., Winston-Salem, N.C., 38, 80
 Mowery, John, 510 S. Wayne St., Danville, Ind., 8, 80, 104, 105
 Murphy, Ernest, 320 Snail Lake Rd., St. Paul, Minn., 88
 Murphy, Yvonne, 3962 Cannon Rd., Youngstown, Ohio, 66
 Murrock, Gerald, 154 W. Allerton Ave., Milwaukee, Wisc., 73
 Myers, Larry, 866 Aurora Ave., St. Paul, Minn., 65, 123
 Nelson, Redina, RR 3, Ellsworth, Wisc., 88
 Nelson, Shirley, Clarkfield, Minn., 102
 Newman, Joseph, 3635 Knox Butte Rd., Albany, Ore., 100, 112
 Newsom, Daniel, 1444 Oak Grove Rd., Decatur, Georgia

Newton, Monty, Rt. 1, Ogden, Iowa, 73
 Nohr, Robert, 605 S. Madison St., Chilton, Wisc., 88, 104
 Noll, Daniel, 6513 N. 87th Pl., Scottsdale, Ariz., 13, 73, 96
 Nordvall, Craig, 1398 Snelling Ave. N., Duluth, Minn.
 Nylin, Michael, Annandale, Minn., 80
 Olsen, Roger, 908 Grand, St. Paul, Minn.
 Olson, Bruce, 3033 Chase Dr., Minnetonka, Minn., 80
 Olson, Raymond, RR 1, Bethel, Minn., 22, 73, 97, 104, 105, 119, 120
 Olson, Sandra, Rt. 4, Viroqua, Wisc., 80, 104
 Ott, Delores, Rt. 2, N. River Rd., Janesville, Wisc., 80, 104
 Parker, Dennis D., 4518 282 St., Toledo, Ohio, 88
 Pata, Judith, 1820 Idlewild Ave., E. Cleveland, O.
 Pata, Nancy, 1820 Idlewild Ave., E. Cleveand, O., 88
 Paul, Mary, 6821 N. Ottawa Ave., Chicago, Ill., 20, 80, 104
 Payne, Bonnie, 28871 Farmington Rd., Farmington, Mich., 73, 97
 Peace, Earl, Box 1638, RD 1, Lewistown, Pa., 56, 73
 Pearson, Leonard, Rt. 1, Box 217, Superior, Wisc.
 Perhus, Susan, Marshall, N. Dakota, 88, 102
 Peters, Raymond, 2120 Maryland Ave., Superior, Wisc., 88
 Petersen, Paul, 6033 Spaulding St., Omaha, Nebr., 88, 118, 119, 120
 Peterson, Donald, 1319 Hewitt, St. Paul, Minn., 66
 Peterson, Timothy, 2336 E. Skillman, St. Paul, Minn.
 Peterson, Roxanne, 23 W. 48th St., Mpls., Minn., 104
 Phillips, Elizabeth, 2651 Burton Rd., Ann Arbor, Mich., 80, 102
 Phillips, Nancy, 4801 S. Hanna St., Ft. Wayne, Ind., 88, 109
 Ploeger, Kathryn, 253 11th St., Pine City, Minn., 88
 Pope, Sheila, 384 Brandon, Glen Ellyn, Ill.
 Porter, Randy, 5024 S. 82nd St., Ralston, Nebr.
 Porter, Ricky, Box 27026, Ralston, Nebr., 81, 121
 Porter, Ronald, 1415 Wayne, St. Paul, Minn.
 Post, Eugene, 1242 Reaney Ave., St. Paul, Minn., 67, 69, 103
 Pugh, Rebecca, 2421 S. 49th, Omaha, Nebr., 104
 Puzia, Sandra, 1202 W. Layton Ave., Milwaukee, Wisc., 71, 73, 104
 Raney, Cheryl, 508 White Oak Dr., Roselle, Ill., 81
 Ray, Lee, 879 N. Pascal, St. Paul, Minn., 73
 Reed, Daniel, 1738 Van Buren, St. Paul, Minn.
 Reed, Douglas, 915 Park, Anoka, Minn., 66, 74, 103
 Reibling, Roger, 1471 Wynne, St. Paul, Minn., 67
 Reichow, Joanne, 116 Park Ave., Jackson, Mich., 89
 Reigel, Linda, 804 S. Hemlock, Marshfield, Wisc., 81
 Reigel, Patricia, Rt. 3, Box 171, Marshfield, Wisc., 89
 Reimer, M. Wayne, Box 383, Steinbach, Manitoba, Canada, 89, 104
 Reitsma, Ami, Hadly, Minn., 89
 Rice, Celia, RD 1, Stacy, Minn., 38
 Rightler, Alvin, 1440 Minnehaha, St. Paul, Minn.
 Ritchie, Sandra, Keswick, Iowa, 89
 Robinson, Jeanne, 528 N. Perry, Titusville, Pa.
 Romin, Linda, 1794 Cora St., Des Plaines, Ill., 70, 73, 74, 96, 104, 109
 Ronzheimer, Dorothy, 335 Oaklawn Ave., Elmhurst, Ill., 67, 102, 109, 112, 114, 115
 Roseland, Melody, 209-A, Rt. 2, Osseo, Minn.
 Ross, Thomas, Tr. 2, Box 209, Superior, Wisc.
 Royle, Frederick, 1865 Wood St., Muskegon, Mich., 89, 103
 Rurup, Darren, 1056 Churchill Ave., St. Paul, Minn., 68

Rurup, Marilyn, 1056 Churchill Ave., St. Paul, Minn.
 Russell, Gary, 140 Geneva Dr., Oskaloosa, Iowa, 81, 104, 105
 Russell, Kae, 955 S. 68 St., Omaha, Nebr., 68, 104
 St. Cyr, Effie, 4600 Lake Rd., Mpls., Minn., 89
 St. Cyr, Robert, 4600 Lake Rd., Mpls., Minn., 89, 104
 St. John, Donald, 5966 Grand Haven Rd., Muskegon, Mich., 62, 70, 74, 75, 104
 Sandell, Clifford, 2491 Williamswood Ct., Decatur, Georgia
 Sander, Mary, Rt. 1, Deerwood, Minn., 28, 89
 Sawyer, Alyce, PO Box 1866, Orlando, Fla., 74
 Schaa, Brenda, Kamrar, Iowa, 88, 89, 102
 Scherrer, Judith, 5722 64th Pl., Riverdale, Md., 81
 Schmidt, Betty, 312 4th Ave. NE., Jamestown, N. Dak., 26, 73, 78, 81, 98, 104
 Schneider, Kathleen, 1960 E. 28th St., Lorain, Ohio, 89
 Schroeder, Elizabeth, 4051 Bethel Ave., Apt. 13, St. Paul, Minn.
 Schuppman, Bonnie, Box 336, Sandstone, Minn., 81
 Scott, Karen, 1479 Lincoln Ter. NE, Columbia Hts., Minn., 89
 Scott, Robert, Star Route, Brainerd, Minn., 81
 Seiditz, John, 5447 43 Ave. S., Mpls., Minn.
 Severson, Donna, Box 144, Taylor, N. D., 89, 102
 Severson, Kenneth, Box 144, Taylor, N. D., 74, 96, 99, 100, 104
 Shaffer, Dorothy, Grampian, Pa., 89
 Shantz, Eldora, 2223 Cornell Ave., Janesville, Wisc., 68, 69, 93
 Shantz, Roger, 2223 Cornell Ave., Janesville, Wisc., 82, 89, 103, 109
 Sherrerd, Loretta, RD 2, Cambridge Springs, Pa., 74
 Shie, Catherine, Rt. 2, Orrville, Ohio, 90
 Shoemaker, Terry, 6711 S. Hanna, Ft. Wayne, Ind.
 Sias, Marion, Rt. 2, Clear Lake, Wisc., 90
 Simmons, Jane, Box 69, Hiawatha, Iowa, 90, 102
 Sloan, William, 1721 Selby Ave., St. Paul, Minn.
 Smith, Terrance, 1902 Palace Ave., St. Paul, Minn., 81, 100
 Sneyary, Nancy, Rt. 4, Greenville, Ohio, 71, 81
 Snyder, Kathryn, 317 E. Larpeur, St. Paul, Minn.
 Spader, Connie, 1056 Churchill, St. Paul, Minn., 74
 Spader, Larry, 1056 Churchill, St. Paul, Minn., 70, 74, 97
 Spurlin, Grace, RR 2, Nevis, Minn., 75, 100, 102
 Steffey, John, 717 Fry, St. Paul, Minn., 81
 Steffey, Katherine, 717 Fry, St. Paul, Minn.
 Stern, Robert, 1504 W. 4th St., Dixon, Ill., 90, 103, 116
 Stoldt, Bradley, 5 Parsons St., Norwalk, Ohio, 81
 Strawser, Craig, 1116 N. Dousman Rd., Oconomowoc, Wisc., 81, 104
 Strawser, Linda, 1742 Merryview Lane, Hibbing, Minn., 81, 104, 105
 Strohl, Gregory, 1614 Malasia Rd., Akron, Ohio
 Stumbo, Stephen, 1308 D Ave. NE, Cedar Rapids, Iowa, 57, 100
 Swanson, David, Russell, Minn., 90, 104, 105
 Swanson, Loretta, Naper, Nebraska, 90
 Swanson, Lynn, 3700 Inglewood Ave. S., Mpls., Minn., 75
 Swanson, Robert G., Box 1830, Manila, Philippine Islands, 78, 81, 99, 119, 120
 Swanson, Robert L., Naper, Nebr., 56
 Swedberg, Diane, Blackduck, Minn., 90, 102, 109

Tanner, Bruce, Clayton, Wisc., 72, 75, 100
 Taylor, Margaret, 105 Theron St., Johnson City, New York, 14, 68, 93, 94, 99, 111
 Thomas, Janice, Rt. 1, Loyal, Wisc., 81
 Thompson, Bonnie, 1428 Como Ave., St. Paul, Minn.
 Thompson, Venus, RR 6, Huntington, Ind., 90, 102
 Toenjes, Agnes, 1037 Pacific St., St. Paul, Minn., 75
 Trautman, Julie, RR 1, Moorhead, Minn., 90
 Tuttle, James, Rt. 1, Box 89, Anoka, Minn., 83, 90
 Tveitbakk, Ronald, 7639 Blaisdell Ave. S., Richfield, Minn., 90
 Tyler, Janis, BP 6, Nouna, Upper Volta, West Africa, 91
 Tyler, Paul, BP 6, Nouna, Upper Volta, West Africa, 68, 69, 108
 Tyler, Theresa, 8 Billings Rd., Apalachin, New York, 73, 81
 Vanaugh, E. Dean, 1745 Overlook Ave., Youngstown, O.
 VanKerix, Jacquelyn, 314 Dover Ave. NE, Orange City, Iowa, 90
 Vannett, Willard, Box 188 B, Big Lake, Minn.
 Wagoner, Wanetta, 323 E. Seminary, Hoopeston, Ill., 8, 69, 109
 Walker, John, Trenton, Nebr., 75
 Waters, Karyl, Box 172, Richey, Montana, 90
 Watson, Willard, 1147 N. Hamline Ave., St. Paul, Minn., 75
 Watts, Timothy, 4518 Greenwood, Lincoln, Nebr.
 Welsh, B. Joy, 906 Barnhart Ct., Zion, Ill., 81
 Wemer, Sandra, RR 5, Ottumwa, Iowa, 81, 102
 Werner, Kathleen, Box 336, Pardeeville, Wisc., 90, 115
 Wible, Sherri, 529 W. Packard Ave., Ft. Wayne, Ind., 81
 Widtfeldt, Joyce, 2225 Buchtel Blvd., Denver, Col., 28, 75
 Wiens, Donald, Mountain Lake, Minn., 104
 Wiggins, Donald, 3330 19th, Wyandotte, Mich., 75, 99, 104, 105, 109
 Wigginton, Terry, 820 N. Albert, St. Paul, Minn., 90
 Wiley, Wesley, 3014 Nadina Dr., Louisville, Ky., 82, 90, 103, 116
 Wilhelmsson, Lars, 1187 Selby Ave., St. Paul, Minn., 69, 93
 Wilkins, David, 2180 Haddington Rd., St. Paul, Minn., 81
 Williams, Dwight, 8350 Fremont Ave. S. Bloomington, Minn., 37, 81, 104, 105, 109, 119, 122, 123
 Winkelman, Daniel, 1642 Snelling Dr., St. Paul, Minn., 75
 Wolcott, Kelly, Arlee, Montana, 109
 Wood, C. Brent, 962 City Rd. B2, St. Paul, Minn., 81, 100
 Woods, David, 6212 Minnetonka Blvd., St. Louis Park, Minn.
 Worden, Dennis, Box 33, Verndale, Minn., 91, 119
 Worden, Pamela, RR 3, Greenwood, Wisc., 91, 115
 Worrell, Jo Ellen, RR 1, Box 246, Clayton, Ind.
 Wright, Charles, 6213 Mansfield Dr., Greendale, Wisc.
 Young, Janet, 4240 Stinson Blvd., Mpls., Minn., 91, 104
 Young, John, 2123 20th St., Cuyana Falls, O., 16
 Young, Sondra, RR 1, Box 193, Wadena, Minn., 91
 Ysker, Lois, 1227 Hewitt Ave., St. Paul, Minn.
 Zenor, Shari, RR 1, Ogden, Iowa, 91
 Ziebarth, Damaris D., 5350 Perry Circle, Mpls., Minn.
 Zopfi, Deborah, 718 111th Ave. NE, Mpls., Minn., 75
 Zopfi, Stephen, 718 111th Ave. NE, Mpls., Minn., 90, 91
 Zweifel, Linda, 75 S. Lexington Dr., Janesville, Wisc., 81, 104

Faculty — Staff

- Allen, John; Psychology — 4041 Bethel Dr., Apt. 38, St. Paul
Allwine, Janet; Secy., Ad. & Rec. — 5301 DuPont Ave. N.,
Mpls., 50
Bergman, Theodore; Music — 5400 Clinton Ave., Mpls.
Braden, Phyllis; English — 4051 Bethel Dr., Apt. 14, St. Paul,
36
Brokopp, Faith; Secy., Acad. Dean — 816 N. Albert St., St.
Paul, 48
Brown, Lucille; Chmn., Music Dept. — 1007 Tiller Ln., St.
Paul, 18, 43
Brundin, Harold; Music — 3131 Park Ave., Mpls., 44
Cahow, Junice; Cook — 764 N. Hamline, St. Paul, 58
Cook, Helen; Mimeo & Mail. — 2599 Lexington Ave. N, Lot
129, St. Paul, 60
Cook, Raymond; Asst. to Pres. — 2599 Lexington Ave. N, Lot
129, St. Paul, 54
Conley, William; Chmn., Missions Dept. — 176 Hawes Ave.,
St. Paul, 20, 34, 40
Davis, Ronald; Asst. Dean of Men — 1361 Englewood Ave.,
St. Paul, 53
Dean, Carolyn; Music — 2682 Virginia, St. Paul, 42
Dincau, Elaine; Secy., Development — 100 W. Iowa, Apt. 8,
St. Paul, 54
Eastman, Martin; Asst. Supt. Grounds — 2172 N. 6th St., St.
Paul, 35, 61
Ferry, Russell; Vice-pres. for Development — 2749 N.
Griggs, St. Paul, 20, 54
Fromke, Vincent; Medical — 2115 Roblyn Ave., St. Paul, 47,
49
Gates, John; Chmn., Philosophy Dept. — 1387 Englewood
Ave., St. Paul, 22, 38, 76
Hackney, Kay; Secy. to Pres. — 816 N. Albert St., St. Paul,
48
Hahn, Robert; Supt. of Grounds — 1221 W. Cty. Rd. B, St.
Paul, 21, 61
Hanaford, Susan; Secy., Chr. Service — 1125 W. Roselawn,
St. Paul, 35, 53
Hedegard, Ellen; Asst. Libr. — 1407 Hewitt Ave., St. Paul, 56
Heikkinen, Armia; French — 1563 Lafond Ave., St. Paul, 36
Hindmand, Claudine; Assoc. Dean — 806 N. Albert St., St.
Paul, 45, 52
Jensen, Diane; Secy., Public Aff. — 1279 Hewitt Ave., St.
Paul, 55
Kallern, Shirley; Asst. Dean of Women — 1361 Englewood
Ave., St. Paul, 52
Lapp, Doris; Head Cook — 820 N. Albert St., St. Paul, 58
Larson, Stanley; Eng., World Lit. — 875 N. Hamline, St. Paul,
36
Mason, James; Chmn., Bible & Theology Dept. — 1664
Taylor Ave., St. Paul, 20, 34, 40
Miller, Viron; Treasurer, Bus. Mgr. — 1317 Englewood Ave.,
St. Paul, 51
Nelson, Sidney; History — Rt. 1, Box 58, Cambridge, 41
Noll, Harry; Asst. Book Store Mgr. — 1760 Hewitt, St. Paul,
57
Olson, Vernon; Greek, Athl. Dir. — 1822 City Heights Dr., St.
Paul, 37
Parker, Karen; Recep., Swbd. Opr. — 1092 E. Hawthorne, St.
Paul, 60
Pfundheller, Sharon; Cook — 1361 Englewood Ave., St.
Paul, 58
Pierce, Bud; Coach — 7148 Newton Ave., Mpls.
Reich, Estella; Secy. to Registrar — 1346 W. Minnehaha, St.
Paul, 50
Rice, Robert; Science — Rt. 1, Stacy, 20, 38
Richardson, Stanton; Vice-president — 783 N. Albert St., St.
Paul, 35, 40, 49
Robinson, Jeanne; Secy., Music Dept. — 6271 5th St. NE, St.
Paul, 42
Root, Bernadine; Housekeeping Supt. — 1395 Englewood
Ave., St. Paul, 59
Root, Ross; Music — 7301 Able St. NE, Mpls., 42
Schaefer, Carrole; Head Bookkeeper — 824 N. Albert St., St.
Paul, 51
Schweizer, Raymond; Music — 2936 46th Ave. S., Mpls., 43,
103
Shepson, Charles; Dean of Students — 1029 Cobb Rd., St.
Paul, 20, 53
Smid, Marcelyn; Libr. — 806 N. Albert St., St. Paul, 56
Spaulding, Leigh Ann; Head Cashier — 1428 Como Ave., St.
Paul, 15, 51
Stoesz, Esther; Cook — 806 N. Albert St., St. Paul, 58
Swartz, Marvel; Music — 4314 Harriet Ave., Mpls., 44
Swartz, Marvin; Music — 4314 Harriet Ave., Mpls., 44
Tanner, Merton; Registrar — 779 N. Albert St., St. Paul, 50
Teeter, Edna; Book Store Mgr. — 806 N. Albert St., St. Paul,
15, 57
Tewinkel, Joseph; Chmn., History Dept. — 1497 Larpenteur
E. St. Paul, 20, 41, 43, 105
Thompson, George; Speech — 1428 Como Ave., St. Paul,
18, 25, 32, 35, 36, 65
Thompson, Joyce; Nibble Nook Mgr. — 1463 W. Minnehaha,
St. Paul, 61
Thompson, Marvin; Dir., Public Aff. — 1463 W. Minnehaha,
St. Paul, 55
Trouten, Donald; Int. Pres., Acad. Dean — 277 Ridgecrest
Ave., St. Paul, 24, 45, 48, 49
Weldin, Marilyn; Asst. Chmn., Chr. Ed. Dept. — 807 Cannon
Ave., St. Paul, 45
Zopfi, Brownie; Cook — 718 111th Ave. NE, St. Paul, 58