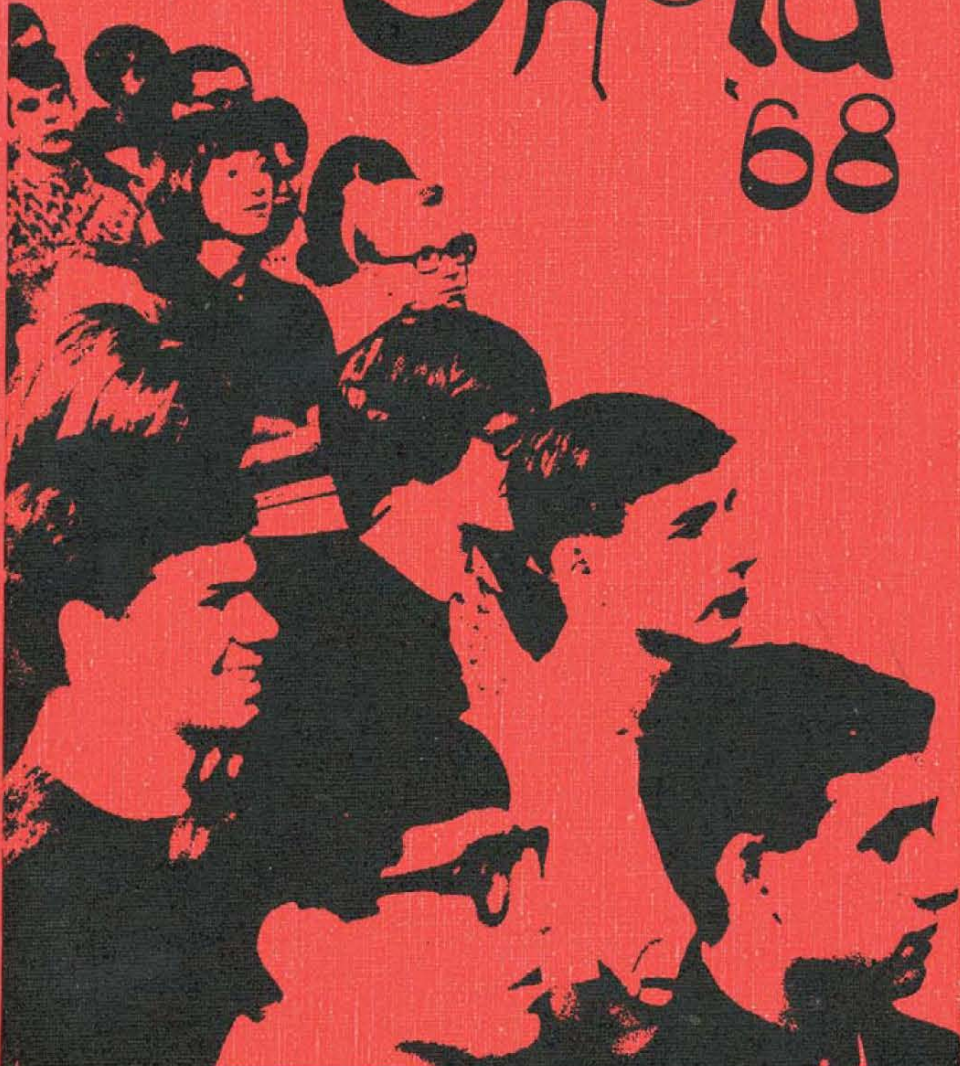


Shield '68



SHIELD 1968

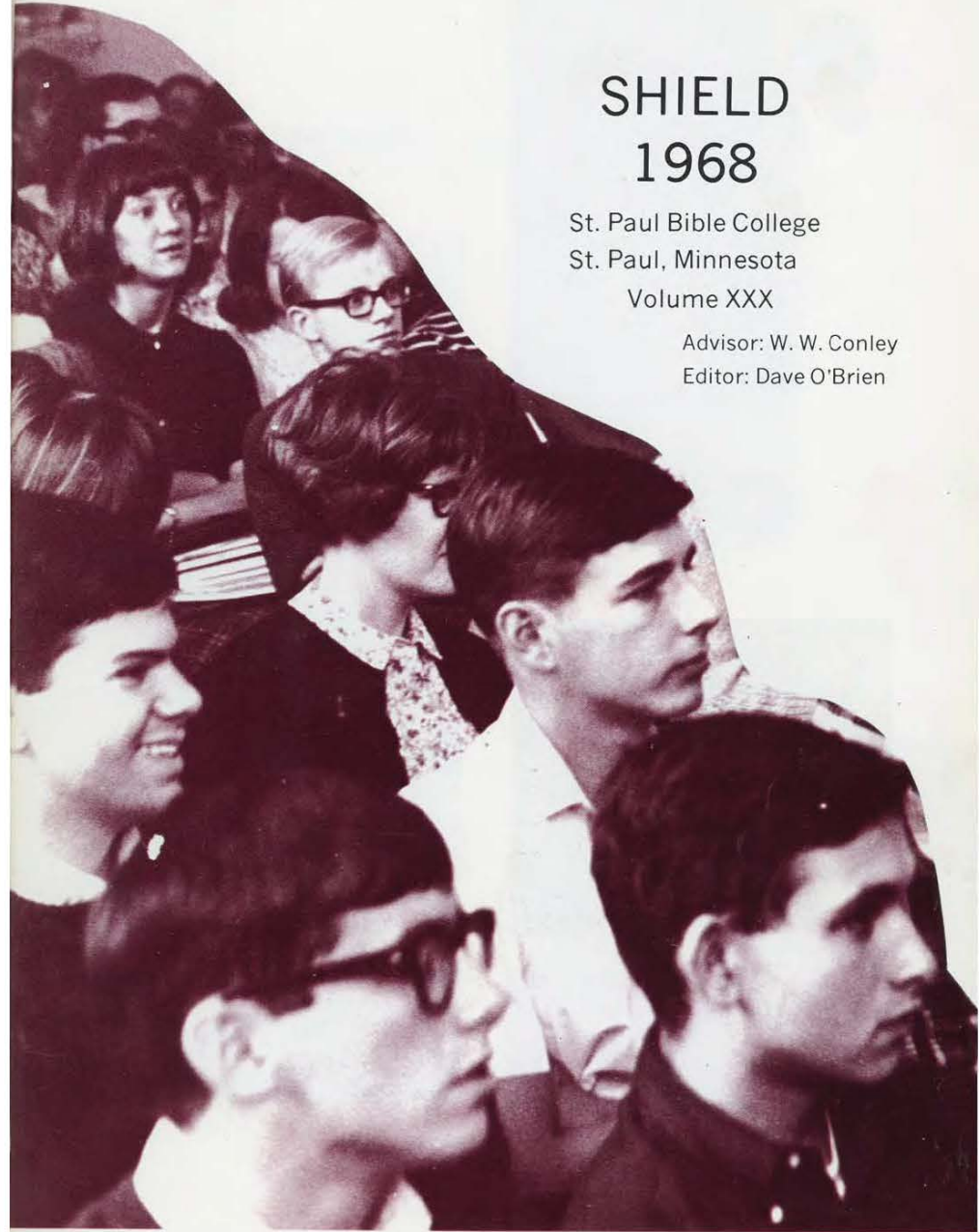
St. Paul Bible College

St. Paul, Minnesota

Volume XXX

Advisor: W. W. Conley

Editor: Dave O'Brien

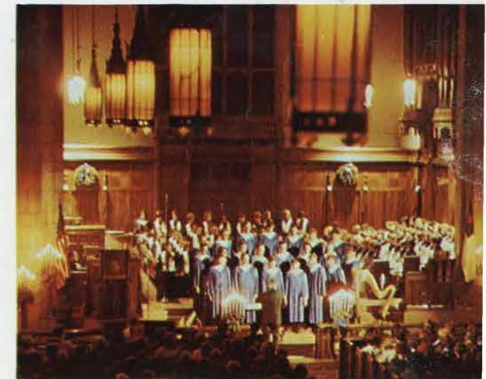




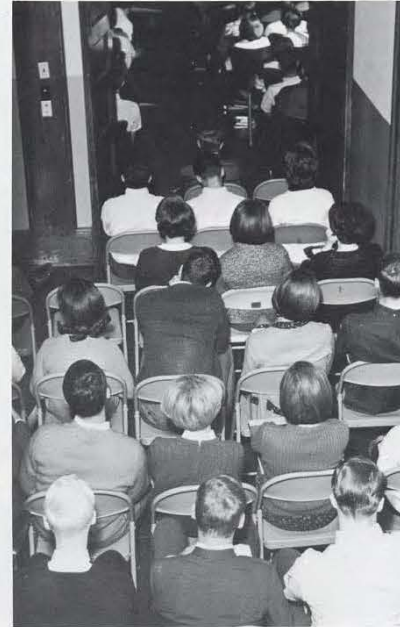
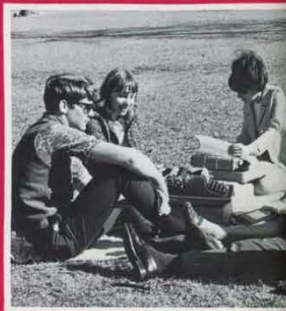
This year we turned



we turned our faces t'ward many things . . .



... toward learning ...





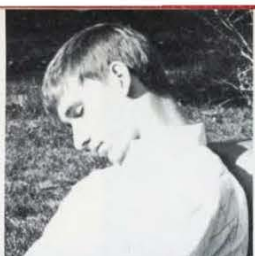
toward relaxation . . .





Table of Contents

Student Life	10
Organizations	40
Athletics	42
Organizations	54
Academics	66
People	74
Advertising	109
Index	120



STUDENT LIFE

AT RIGHT: After completion of pre-registration forms and their approval by her advisor, Eileen Stombaugh settles down to the knuckle cracking task of filling out index and class cards.

Arrival on campus is most frustrating for new students, as they come into contact for the first time with the intricacies of the student handbook and remembering the difference between rooms 8 and 11, but they are soon joined by upperclassmen whose frustration at the paperwork of registration has not been lessened by experience. Registration is a series of crises and confrontations with Mr. Tanner and faculty advisors. This year's registration was made more difficult by the comparatively huge freshman class which clogged up the works with their indecision and sheer numbers, both of which overloaded the single-line-through-the-library registration setup.



School year begins with student arrivals; registration highest for single semester

AT LEFT: Ray Carver gets his free freshman interview with Dean Shepson. BELOW: The place in the line where it all breaks down is the table where Mr. Tanner passes judgement on the validity of your proposed course. Cherri Mallow awaits his verdict.



ABOVE OPPOSITE: Phil Ronzheimer assists Joyce Kelm in the intricacies of campus geography. ABOVE: A part of the arrival routine for Lois Jaques is a tour of Old Main with her family before their departure for home.

Silver Lake Fresh Air Camp again site of "New Student Days;" initiation still on campus

The Freshman class, making up almost a third of the total enrollment of St. Paul, received a sudden and not always pleasant introduction to some of the more quaint social customs of their upper classmates. Immediately after arriving on campus, the new students were run through an indoctrination program followed by a weekend retreat at the Silver Lake Fresh Air Camp. The retreat, which included

skits and stunts familiar from past retreats also featured devotional sessions under Dean Shepson and a Saturday night lake side service at which they received their first taste of Dr. Hardwick's fireside manner. Initiation was slightly less pleasant. In a week of harassment culminating in a final concentration of evil doing in the dining room, the freshmen became a part of the family.

BELOW: Silver Lake, which has suffered from disuse in past retreats, found itself the scene of assorted riots as the warm weather brought retreaters out in force.



AT LEFT: The carpet spread for this uncooperative freshman girl is composed primarily of raw eggs and soda crackers. Her assistants are Bob Weidman and Ken Ehresman. **BELOW LEFT:** Not all participants at retreat were active. These girls are passive, preferring the relative sanctuary of the monkeybars to more strenuous activities. **BELOW RIGHT:** The freshmen at retreat were encouraged to take the instructions "roll out the barrel" literally.



ABOVE: Various real and imagined infractions of initiation week regulations resulted in imprisonment in the SPBC Bastille under the friendly but unsympathetic eye of chief jailor Jim Case. **AT LEFT:** Retreat ended its Saturday activities with a devotional period at the lake front during which participants watched the burning of a cross in the traditional "Galilean service" and burned symbolic faggots in the bonfire.

"SPBC Thanx SPBI" homecoming gathering at

President of the C&MA, Dr. Nathan Bailey was the featured speaker at the alumni banquet, held this year in the dining room of the Billy Graham Association Building. The Friday night homecoming service at Simpson Memorial developed the theme, "SPBC thanks SPBI." A number of alumni speakers called attention to the heritage of the past and the debt which the college of today owes to the



ABOVE: Student participation was somewhat limited but where it was felt it was definite and unmistakable.



ABOVE: The registration table in the main hall began its activities Friday and continued until late Saturday.

theme of 1967 Simpson Church

Institute of yesterday.

Alumnus of the year award was given to Miss Ruth Jones, who is remembered as a teacher of such diverse subjects as English, church history, and Alliance missions. The balance of the weekend was set aside for various and sundry opportunities to socialize in a number of different settings. The proverbial good time was had by all.



BELOW: Violinist Marty Dresser contributes to the Friday night thank you service. BOTTOM: Alumni president Dick Flegle presides over the presentation of alumni scholarship plaques.



"Hearts of Gold"



AT LEFT: Terry and Jan joined with Dan Newsom to present a selection of folk songs and ballads. Other entertainment was provided by a slightly retarded male trio and a saxophone quartet.

BOTTOM LEFT: The Reverend Donald Alexander, professor of Bible and Greek, delivered a short devotional talk on love. **BELOW LEFT:** John Lohman rounded out the program with a comedy monologue.



draws capacity post-Valentine's Day crowd

The local Sveden house, cupid-bedecked in a sweetheart motif, again provided the setting for the annual Hearts of Gold banquet. Featuring a variety of home-grown talent, the February event was attended by some students and staff members. Folk singers Jan, Terry, and Dan, a saxophone quartet,

and John Lohman impersonating Bill Cosby entertained prior to the crowning of banquet Queen Jan Raebel and King Terry Stumbo. MC Ned Campbell introduced Rev. Donald Alexander whose remarks on Christian love concluded the program.



AT LEFT: Three days after Valentine's Day came St. Paul's annual Valentine's Day Banquet, the Hearts of Gold. In honor of one of the two main social events of the year, the regular eleven o'clock curfew was extended until twelve. This particular hour was set because of a prevailing rumor that at one minute after twelve the girls turn into pumpkins. **ABOVE:** Queen and king of the Sweetheart Banquet were Jan Raebel and Terry Stumbo, here shown performing the royal task of carrying their dinners to the table.

Two clean-up days mirror image of every other clean-up day

BELOW and **AT LEFT**: Where the battle cry isn't "windows" it's "leaves." Joyce Kelm, Donna Tallman and Linda Strawser toil manfully, or womanfully at their semi-permanent stack, while on the other side of the campus, a group of more industrious rakes accumulate a monumental mound.



The semi-annual rites of campus clean-up were completed without serious incident, although the usual episodes of water throwing were in evidence. Campus Clean-Ups, for those of you unacquainted with these joyous days, occur once in early fall and again in the spring. As students assume the roles of medieval serfs, they are forced, under the oppressive hands and watchful eyes of faculty members, to work for the school for one-half day. The slaving is done without remuneration other than a recess from regular classes.



ABOVE: There are shelves in the library which, without attention such as administered here by Sue Kanne-man, might eventually collapse under the accumulation of the dust of the ages.



ABOVE: Dr. Trouten smiles gleefully as he checks attendance and reassigns surplus personnel. Expressions of assignees and checkees waver between apprehension and dismay. **AT LEFT**: Perched high atop the library's first floor ledge, Mr. Alexander proves that clean-up is not simply an administration plot to harass the students. It is an administration plot to harass the faculty as well. **FAR LEFT**: A sizable portion of the work force is devoted to the care and feeding of windows. Larry Anderson and the headless glass aperture maintenance engineer see to the needs of the laboratory windows.



During this school year, the music department's students of voice and instrumental music presented a total of 15 recitals in which they were given the opportunity to demonstrate their proficiency in their fields and to gain experience in public performance.

Most frequent performers of this year's recital season were: Judi Heinrichs, vocal and organ; Gwen Franz, vocal and organ; Martha Dresser, vocal and violin; Jo Ellen Worrell, organ; Roy Reese, piano; Mary Dohrmann, vocal; Dwight Williams, vocal, piano and brass; Joyce Spader, organ.



TOP LEFT: Joyce Spader and her trusty page turner Gwen Franz present "Largo" by Vivaldi-Bach, during the April recital. **LEFT:** The spring musicale provided the stage for repeat performance by soprano Mary Dohrmann.

Music students display talents in year-long series of 15 recitals

AT LEFT: Martha Dresser, freshman from Wheaton, Illinois, was the school's first violin recitalist in years. **BELOW:** Roy Reese and Mrs. Dean play Mozart's Double Concerto for Piano in E. **AT RIGHT:** A student of well-known Twin Cities instructor, Mrs. Charlotte Straka, Judi Heinrichs was featured in a senior recital on May 7. A mainstay of past recital programs, Judi graduates this year.





Over 350



TOP LEFT AND RIGHT: Choral Club presented a program and led the college's weekend guests in a sing-along during the Friday evening festivities. ABOVE RIGHT: The normally cramped confines of St. Paul Bible were jammed well past the limit as the on-campus population more than doubled for the two-day period. ABOVE LEFT: With the influx of so many new people, most of whom were unfamiliar with the intricacies of both campus and city, the average student came to feel more like a road sign than a host.



hear "Kelly" Bihl, Choral Club at Campus Days



This year's spring youth conference brought high school students to St. Paul in greater numbers than ever before. Over 400 visitors were registered for the weekend, beginning Friday afternoon and ending Sunday. The official inauguration of Campus Days '68 was presided over by the Choral Club and Dr. Kelly Bihl in a meeting at Simpson church Friday evening. Saturday was devoted to mock college classes in the morning and sports and tourist attractions in the afternoon. After a period of carefully planned foolishness in the chapel, conferees were released to make preparations for the banquet at the Sveden House. Conference ended with church and a closing rally on Sunday.



ABOVE: Dr. Kelly Bihl, former president of Youth for Christ International and now assistant to the president at John Brown University, was the featured speaker for the meetings which emphasized the theme "Christ — in all things pre-eminent." AT LEFT: A group of slightly deranged SPBC students cavort during what was euphemistically labeled "fun time."

BELOW: The scene in the ball room was one of open merriment as the audience reacted to the performances of both Mr. Jorian and Ron Wandmacher.



ABOVE: Warren Lightbody, SPBC's answer to civil rights, and Diane Jensen pass Checkpoint Charlie with no difficulty as he presents his counterfeit tickets to the border guard.



ABOVE: Chosen queen of the evening's festivities, Joyce Spader and her escort-fiancé, Marv Parker, reign over the proceedings with the assistance of Judi Heinrichs and Wanetta Wagoner, members of her court.

Glenn Jorian of the "Melody Four" sings for "Evening Enchantment" at the Sheraton-Ritz



ABOVE: Mr. Hardwick and Mrs. Haag have collaborated on two LP records on the Word label. This evening they applied their piano-organ work to accompanying featured soloist Jorian. BELOW RIGHT: Mr. Jorian makes his contribution to the atmosphere of "Springtime Elegance."

In their never-ending search for ever more opulent surroundings for the annual spring banquet, student council's banquet committee reserved the ball room of the Sheraton-Ritz Hotel, Minneapolis. On the evening of May 11, the party-going members of both faculty and student body made their way up the Nicollet Mall for an evening of feasting and entertainment in that edifice.

Ron Wandmacher, an announcer for Twin Cities radio station WLOL, was emcee for the program of music presented by Glenn Jorian, accompanied by Thom Hardwick and Nathalie Haag of the SPBC faculty. Mr. Jorian, a baritone, sings with the Melody Four Quartet which serves as the nucleus for the "16 Singing Men."



BELOW: Class president Mike Bortel relinquishes the microphone to banquet MC, Mr. Ray Cook. **BELOW RIGHT:** Bending their backs in a waterfront tug of war, Glen and Betty Showell and Jim Medin work off a few of the aggressions and frustrations naturally accrued during the week of senior finals just completed.



ABOVE: Jim Case and Glen Showell struggle to bring their seaworthy craft about in a heavy gale. Not trusting sails, Glen takes to the oars.



Seniors end time at

The class of '68 brought its academic career to a close with an uncharacteristic round of partying. Beginning with the alumni breakfast at Uncle John's Pancake House, an event which got under way at the unearthly hour of 7 a.m., the class was fed better than at any previous period at SPBC. The senior-faculty banquet in the dining room brought those old academic antago-



BELOW: Sharing both a table and reminiscences at the senior banquet are Gordie Seiler of the golden lip and Janelle Skifstad, whose husband Marlin sits just off-camera.



SPBC with banquet, lake front retreat

nists together for a friendly farewell before finals. Senior retreat, with class advisor Mr. Tewinkel presiding, took them 150 miles away from the scene of their scholastic travail. They spent three sunburnt days at Camp Shaminaw where the water sports, sailing, canoeing, water skiing, and tomfoolery formed the nucleus of a variety of pseudo-athletic endeavors.

AT RIGHT: One of the most feared sights in disorganized softball is the pinstripe uniform of the terrible twosome, Patti Oswalt and Bob Biggs, whose battery work kept hitters, fielders, songbirds and chipmunks on their toes.



Largest class in 20 years graduates May 26

Baccalaureate and commencement services for '68 graduates were held on May 26. The morning services, with Minnehaha Academy President Wilbur C. Westerdahl speaking on the subject "Launch out into the Deep" were conducted at Northbrook Alliance church. The 3 o'clock exercises took place at Simpson Memorial Alliance Church. Commencement speaker was Dr. Brandt Opsel, president of the Golden Valley Lutheran College.



TOP LEFT: Dr. Trouton presented the largest graduating class in recent years to Dr. Hardwick who had the pleasant task of presenting the graduates their diplomas. **AT LEFT:** Polishing off a cup of SPBC's famous coffee, graduate Judy Pata partakes of the traditional president's breakfast with her sister, Jay, class of '67. **ABOVE:** The class of '68 gathered for what turned into a highly amusing graduation rehearsal at Simpson. **BELOW:** Paul Raudenbush, Emmy Raney, and Judy Pata concentrate on Mr. Tanner's marching orders.



ABOVE: Presiding over his last graduation as president of the St. Paul Bible College, Dr. Harry Hardwick opens the exercise at Simpson church. **TOP RIGHT:** Rose Cook, Marilyn Kelm, and Patti Oswalt give vent to the feelings of joy and relief which are part of the graduation experience. **AT RIGHT:** All dressed up with nowhere to go, yet, the graduates occupy their time with assorted poses of standing, staring, and stillness.





AT LEFT: A staff member from the University of Minnesota chapter of Campus Crusade for Christ presented the Crusade high school work with an eye toward recruiting volunteers.



Special speakers bring blessing and challenge



ABOVE: Frederick C. Schwartz, Rabbi of Mount Zion Synagogue presented an eloquent enumeration of the hindrances to real brotherhood in an extended chapel period and a following question-and-answer session in the main lounge.

AT LEFT: Describing the descent of the cat, Mr. Vern Sir Louis, lay Bible teacher from the Stowe, Ohio, Alliance Fellowship presented his side of the unique home evangelism program being pioneered by their members.

Chapel services are intended to give students a varied spiritual experience. In addition to the annual deeper life and missionary conferences, senior testimonies and pastoral lectureship, this year's chapels included a pre-Easter communion service, representatives from Child Evangelism, Alliance president Nathan Bailey and a series of sermons presented by senior Greek students as part of their class work.

to daily chapel service

AT RIGHT: A representative of the Alliance Youth Corps offered the opportunity for a summer of overseas mission work.



ABOVE: Commercial artist turned youth speaker "Sketch" Erickson gave portions of his illustrated lecture series "Pop goes America." His lectures analyzed symptoms of what he called the deterioration of life in the United States.



ABOVE: Mr. Stoeher, a Jewish Christian and a participant in the 1967 Arab-Israeli "Six-Day War" spoke for forty minutes on the war itself and how it fits into prophecy. He also spoke on the Jewish revival of interest in the Scripture.

THE BAMBOO THE BAMBOO
CROSS OR CURTAIN



ABOVE LEFT: The nine missionary prayer bands are responsible for the construction of missionary displays for the conference. Prizes are awarded for the best effort. ABOVE RIGHT: A panel composed of returned missionaries, Mr. Bartel, personnel secretary and Rev. Klein, area secretary for Africa discussed the value of advanced education for missionary candidates. The panel was moderated by Mr. Joseph Tewinkel, chairman of the school's history department.



ABOVE RIGHT: Reverend George Klein was present as a recruiter for the African fields which are under his jurisdiction, and the rest of the world, which is not.



visitors

visitors

AT LEFT: A high point in the week's meetings was the presence on campus of Dr. Nathan Bailey, president of the society. AT RIGHT: Interviews with missionary candidates are an important part of the week. This year, Mr. Bartel and a board of missionaries and faculty members screened applicants. Virg and Bonnie Adams, class of '66, underwent their final interview for foreign service.



Bailey, Bartel, Klein among mission conference

The annual campus missionary conference, under the direction of Rev. William Conley, was held October 18-20. Missionaries representing Africa, Indonesia, South America, and Viet Nam presented their particular fields and the challenge of missions in general for the consideration of the student body. Mr. Robert Bartel, personnel secretary of the Alliance and Rev. George Klein, area secretary for Africa were on campus as representatives of the foreign department. The MK panel, a perennial favorite, talked about school life on the mission field while "Principles of Missions" students debated the proposition: "The need on the mission field constitutes the missionary call." The week's program was rounded out with missionary films, seminars and panels.





ABOVE: A part of Pastor Epperson's ability as a preacher was demonstrated in his facility with voices, dialects and dramatic presentation, as he applied all these talents to the delivery of his sermons.



Welbourn, Epperson

The Reverend Gerald Welbourn, Brockton, Mass., was featured speaker for the fall installment of St. Paul's semi-annual deeper life conference. He brought messages on heroes of the faith, demonstrating the importance of fellowship with God in relation to success in every day Christian living. The secret is in keeping open the vertical lines of communication with God as well as the horizontal lines of communication with those about us, according to Rev. Welbourn Second

AT LEFT: Reverend Gerald Welbourn of Brockton, Massachusetts, devoted his daily chapel messages to the subject of prayer, what he called the "power producing practice" of our lives.



AT LEFT: As a member of the board of managers of the C&MA, Reverend Epperson demonstrates keen interest in St. Paul's plans for the future. ABOVE: Reverend Welbourn took advantage of his time on campus to counsel with students and converse with faculty members.

conduct semi-annual deeper life conferences

semester's deeper life services were conducted by Reverend Charles A. Epperson. Rev. Epperson, in addition to serving as pastor of the First Alliance church of Louisville, Kentucky, is on the board of managers of the Alliance and is active in missionary visitation. He spoke on the subject of thirst and satisfaction, drawing on Biblical figures whose lives evidenced just such a thirst.



ABOVE: Fall Missionary Cabinet. Mike Van Langen, Judy Pata, Emmagene Raney, Jim Rightler, Judi Heinrichs, Marv Backstrom.

Missionary cabinets plan, produce varied



The incoming freshmen were introduced to the Friday night missionary meeting by a musical program featuring Thom Hardwick and Nathalie Haag. Other highlights of the year's meetings were a visit by representatives of Dave Wilkerson's Teen Challenge, the Palermo Brothers, a missionary nursing seminar, alumnus Virg Adams and slides of the Holy Land. The grand finale to this year's meetings was a simulated open air service with Rev. Conley, two Indonesian girls, assorted goats, chickens and students. Indicative of the originality with which this year's cabinet performed their duties was the missionary pledge protest march by St. Paul's pseudo-hippies proclaiming money power, sacrifice and LUV.

AT LEFT: On his way to linguistic training in Toronto, Rev. Virgil Adams, of the class of '66, shed light on some of the tribulations of the missionary-candidate packing for the field.



ABOVE: Mr. Conley, with the assistance of an Indonesian student interpreter, preaches the sermon during the spring cabinet's rained-out outdoor mission service. AT RIGHT: Phil and Louie Palermo gave personal reminiscences and pictures of the martyred Ban Me Thuot missionaries as part of their Simpson appearance. BELOW RIGHT: Appearing in a series of vignettes on mission life, Mr. and Mrs. Conley, who have several years of experience in Indonesia, presented situations that might be encountered by missionaries.



Friday meetings



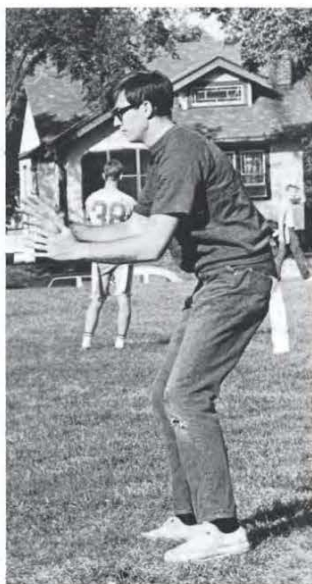
ABOVE: Winter Missionary Cabinet. Jim Medin, Phil Ronzheimer, Patti Oswalt, Bob Kallem, Mary Dohrmann and Colleen Young. AT RIGHT: Spring Missionary Cabinet. Dan Noll, Cindy Brown, John Brokopp, Sue Conner, Dick Abramson and Terri Conn.





ORGANIZATIONS

Intramurals in first year under new



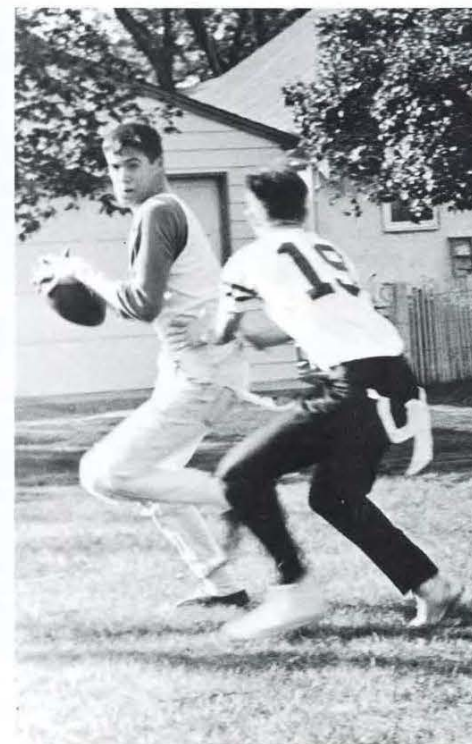
ABOVE: SPBC's intramural version of Frann Tarkenton, flag football quarterback Larry Morris awaits the arrival of the hotly contested pseudo-pigskin.



The intramural program at SPBC entered its second year of action under the leadership of Terry Stumbo. Sponsored by the Student Council athletic committee, the program included four sports: football, basketball, volleyball and softball. Competition between the Juniors and Sophomores highlighted play with the inexperienced Freshmen lacking in organization but not spirit. Characterized by such names as the "Saints," the "Fundies" and the "Liberals," the St. Paul intramural basketball program combined with Hamline University teams in an inter-intramural program. Meanwhile, the volleyball team placed second to Hamline in competition. The final phase of the season was staged at Murray field, where only the daring of heart and the impervious to rain and cold participated in softball.



expanded program



ABOVE: Rich Brown grimaces as he attempts to elude Jared Huber. ABOVE LEFT: The Feeble Five, freshman answer to the fearsome four-some awaits the clash of contact after the snap of the ball. The Feeble Five is made up of Mike Newman, Greg Strohl, Mike Nylin, Cliff Sandell and Rick Porter. AT LEFT: Flanked by Gordie Seiler and Rog Reibling an unidentified ringer kicks off.



AT RIGHT: Linda Reigel takes part in one of the many pre-season practice sessions required of this year's cheerleaders. Joyce Kelm and Linda Romin, appearances notwithstanding, are also practicing, though less strenuously.



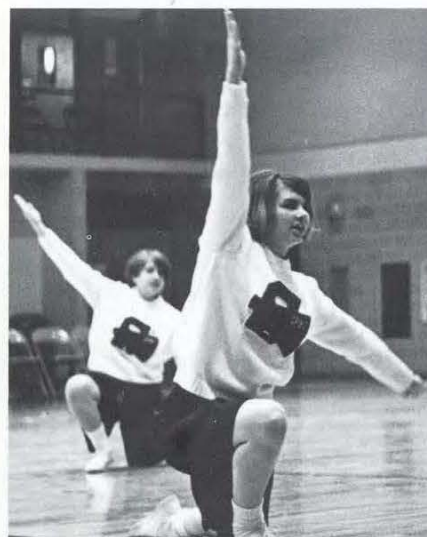
Cheerleaders consolidate squads for '68

The cheerleading squad for the 1967-68 school year was reorganized for greater efficiency and, hopefully, team spirit. In the past the squad has been divided into two segments, one of which led cheering for wrestling, the other being responsible for basketball. This year's group handled both sports as a single, smaller unit. The girls, under the leader-

ship of captain Dorothy Ronzheimer, suffered from the same malady experienced by the athletic teams — inexperience. Three members of the six girl squad were freshmen, who, with sophomores Linda Taflin and Joy Kurrasch, and their junior captain, were chosen at auditions held by representatives of the various sports and student organizations.



BELOW: Working at a job made simple by the excitement of the game, the cheerleaders work at promoting crowd enthusiasm during the Crusader's come-from-behind, upset victory over the Comets of Concordia College.



AT LEFT: Sophomore, Joy Kurrasch, takes time out from her cheering duties to stare at the Shield photographer. ABOVE LEFT: Taking advantage of the temporarily vacant playing floor, Connie Soderberg and Linda Taflin (background) direct the



cheering endeavors of the SPBC aggregation. ABOVE RIGHT: The minutes before the crowd are made possible by the hours in solitary practice. Linda Taflin practices a jump in preparation for the pre-season tryouts.

North Central	33	SPBC	22
Hamline	28		69
Bethel	39	(triangular)	69
Pillsbury	33		22
North Central	29		26
River Falls			
(Wisc)	29		76
Macalaster	28		76
Mankato State			
(Freshmen)	28		68
Gustavus	36		68
Bethel	25		44
North Central	64		44
(low score wins)			

Strong opponents push CC in second season

The Saint Paul Bible College cross country team entered their second season of competition, young and inexperienced. Four returning lettermen and four new recruits represented the purple and white against an expanded schedule including such stiff competitors as Mankato State, Wisconsin State at River Falls, Macalester, and Gustavus Adolphus.

After opening the season with a win over North

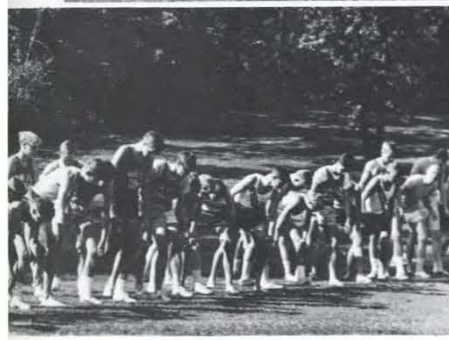
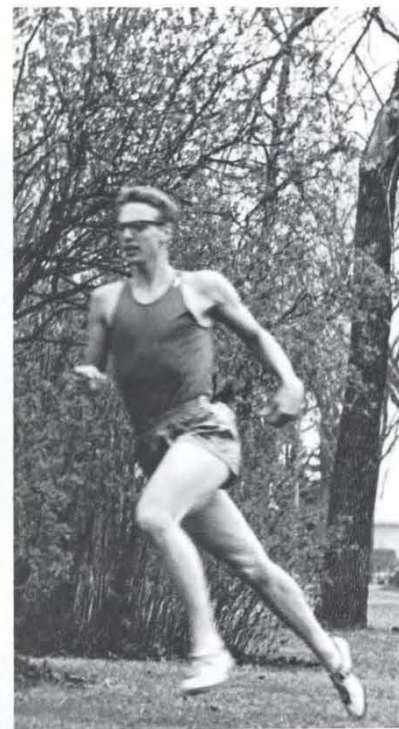
Central, the thin-clads went on to compile a 4-7 record. Led by the consistent running of Captain Ken Ehresman, the Saint Paul road-runners included strong performances by sophomore letterman Ned Campbell and freshman Ken Wallis. Conspicuous in the list of Saint Paul victims was North Central Bible College, who fell three times to the Crusaders.



ABOVE: The strain of a four mile run is evident on the face of freshman Ken Wallis. Ken, who provided a part of the nucleus of this year's team, is seen passing through one of the gates used to mark out the course to be followed.



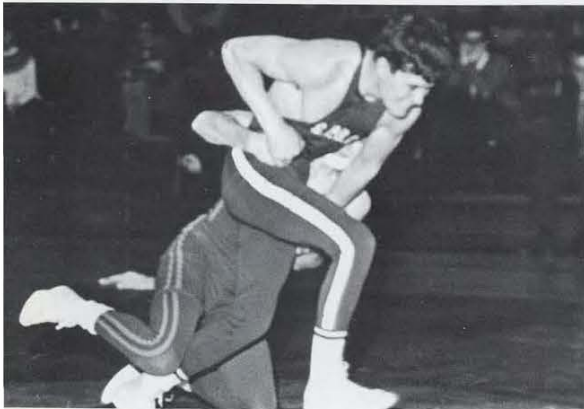
ABOVE: Unlike the more familiar track events, cross country depends more on steady running and endurance than on speed. Since the speed of the start is less important, the starting line resembles a roll call in gym class more than a race.



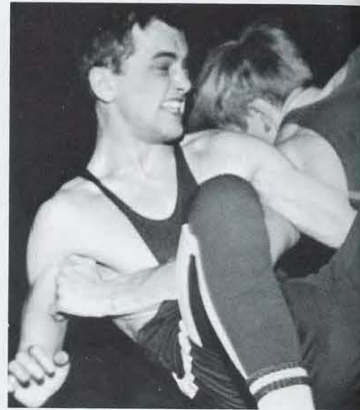
TOP: Sophomore Ken Ehresman was one of the four returning lettermen on this year's team. Spurring around a clump of bushes in a blur of speed, Ken demonstrates the form that made him both most valuable runner and this year's team captain.

BELOW: First row, Rich Hermann, Ken Wallis, Ken Ehresman, captain. Second row, Dennis Sears, Phil Ronzheimer, Bob Weidman, Ned Campbell.

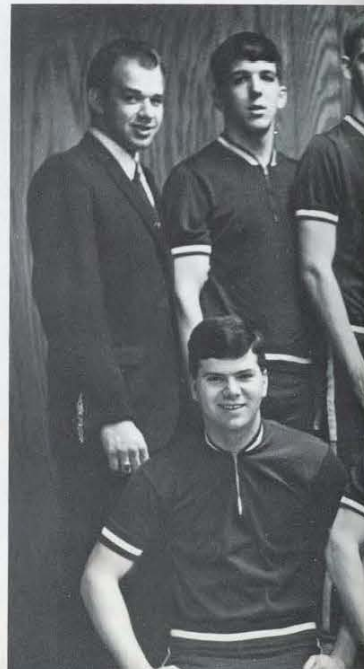




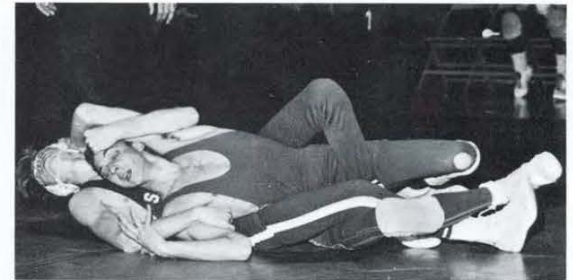
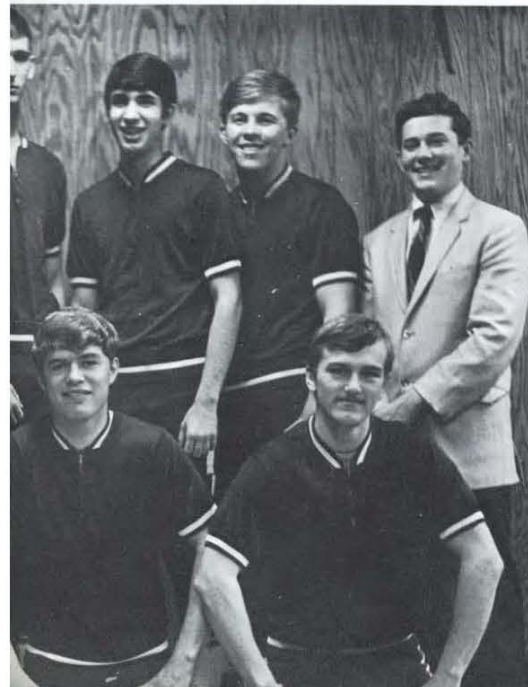
TOP: The image of cool, collected manipulator of athletes and strategy so often attached to coaches does not fit student-coach Dave O'Brien, whose matside activities often equalled in intensity the competitive efforts of his wrestlers.
ABOVE: Wrestling in the defensive position, 145 pounder Don Block works toward breaking his opponent's control by running out of a stand up.



3-8 season



improvement over last year's 1-7



AT LEFT: Senior co-captain Paul Raudenbush grimaces with the exertion required to reverse his position. Having started on the bottom, he can win two points if his "switch" is successful. **ABOVE:** Maintaining rigid control of his Concordia opponent, freshman Larry Anderson, wrestling in the 130 pound class, works for a pin, worth five team points.

AT LEFT: Wrestling team. First row: Ken Stumbo, Don Block, Paul Raudenbush. Second row: Tom Dunn (manager), Walt Lowe, Harry Landaw, Cliff Sandell, Mike Nylin and Larry Morey.

Individual performances brighten losing season



Crusader wrestlers compiled an uninspiring 3-10 record for the season. The three victories came at the expense of Northland College of Ashland, Wisconsin, who fell twice, and Austin Jr. College who suffered a late season defeat after opening the year with a decisive victory over the short-handed St. Paulites. The rest of the season could have been dismal if it had not been for the outstanding performance of a few individuals. Co-captains Mike Nylin and Paul Raudenbush, Walt Lowe and Larry Anderson contributed consistently good wrestling to the team efforts. Season highlights included close matches against powerful Concordia and Pillsbury teams.

AT LEFT: Recipient of St. Paul's outstanding wrestler Award for the 1967-68 season, Mike Nylin is awarded his ninth victory of the season en route to a perfect year. This award is presented annually to the wrestler scoring the highest number of team points.

BELOW: John Lohman attempts to counter a stand-up by his Northland college opponent. John competed for the first half of the year in the 137 pound weight class before dropping to 123 where he finished out his season with three consecutive pin victories.

Austin Jr. College-	30	SPBC	15
Concordia	31	SPBC	8
Northland	19	SPBC	26
Pillsbury	31	SPBC	8
Bethel	31	SPBC	8
Wis State	31	SPBC	8
(River Falls)			
Northland	11	SPBC	8
(Ashland, Wis.)			
Concordia	23	SPBC	15
Austin	11	SPBC	26
Bethel	28	SPBC	10
Pillsbury	27	SPBC	15



The S.P.B.C. basketball team finished a spotty 67-68 roundball season with a disappointing 6-10 record. Coach Pierce's cagers lost 3 out of 5 starters while establishing a 3-2 record, and then dropped 6 games in a row before finally notching another win against cross-town rival Minnesota Bible College. Indicative of the type of season the Crusaders had was the second North Central Bible College game. They went home, apparently the victims of a 77-76 defeat only to learn later that the official outcome was a 77-77 tie!

The highlight of the season was the heartstopping victory over Concordia College on their home court. Concordia, unbeaten previously in conference play, led by 15 points at halftime, but S.P.B.C. came back for a 51-47 upset win.

AT LEFT: Chaos erupts beneath the basket as forward Gary Hubin and guard Lannie Stumbo try to block an opponent's layup in St. Paul's home opener against North Central Bible College of Minneapolis. **BELOW:** Lannie Stumbo (21) lunges aggressively in an attempted steal against Dr. Martin Luther College of New Ulm. Joe Newman (12) and Rob Swanson (35) move in on the action.



Faith Baptist	46-82	SPBC
Briar Cliff	112-60	SPBC
Faith Baptist	62-66	SPBC
Dr. Martin Luther	88-75	SPBC
North Central	73-95	SPBC
Concordia	64-48	
Tritan College	93-63	SPBC
Grace College	95-54	SPBC
Minnesota Bible	83-73	SPBC
Pillsbury	86-55	SPBC
Briar Cliff	99-69	SPBC
Minnesota Bible	59-72	SPBC
North Central	77-76	SPBC
Minnesota Business	98-77	SPBC
Concordia	47-51	SPBC
Minnesota Bible	67-74	SPBC
Pillsbury	78-53	SPBC
Dr. Martin Luther	94-72	SPBC

Shorthanded cagers struggle through



ABOVE: In spite of heavy traffic under the boards and a solid elbow to the chin, Rob Swanson (35) gets his shot away. Positioning themselves for the rebound are center Roger Olsen (24) and the Crusaders most photogenic basketballer, Lannie Stumbo (21).



losing 6-12 season



ABOVE LEFT: "Swanson, take the 16A bus to the Washington Avenue Bridge. Turn right go two blocks to Northrop Auditorium. Run up the stairs and wave your arms. Olsen will fake it to you."

ABOVE: Lannie Stumbo helps Rick Porter with the pre-game ordeal of taping ankles as Rich Brown looks on.

AT LEFT: Captain Dick Abramson helped spark S.P.B.C.'s biggest victory, dropping Concordia, 51-47.



ABOVE: Stepping out with a long stride and determination, Joe Newman drives past his opposition in search of another basket.

From council to senate in constitution revision

Under the leadership of president Bob Biggs, this year's student council revised itself out of existence. According to the terms of the newly re-written constitution the council will hereafter be known as the student senate. The new constitution, which took a revision committee and a separate faculty review committee the better part of second semester to

formulate, also clarified such issues as eligibility membership, constitutional amendment and by-laws. Council's regular programs and committees continued as usual. These included the cultural committee, the new student days committee, campus days, student conduct and various other study and planning committees.



ABOVE LEFT: Student Conduct Committee. Don Wiggins, Georgia Manske, Ken Ehresman, Romaine Larson, Sue Conner and John Mowery. ABOVE RIGHT: Student Council. First row. Joe Newman, Darlene Martin, Bob Biggs, and Gordon Seil-



er. Second row, John Walker, Ken Ehresman, Joyce Spader, and Dale Heckman. Third row, Charles Shepson (faculty advisor), Terry Stumbo and Dan Newsom.



AT LEFT: "Color him Rich" Brown presents his platform in the pre-election chapel. BELOW: Linda Gettle checks the Student Council current events bulletin board in the library lounge. BOTTOM: Casting his ballot in the council election is Colorado transfer student, Bob Foster.





Crowds improve for third concert season



ABOVE: Flo Price inaugurated this year's cultural series with a program of gospel music. **AT LEFT:** Dennis Moffat, a rising young concert artist, performed in a program which was heavily weighted with classical numbers but also featured a short interlude of gospel hymns.

This year's cultural series featured four diverse concerts. The season opened with Flo Price, a gospel singer and pianist. Next on the program was a small string ensemble from the Minneapolis Symphony which played to a small but enthusiastic audience in the St. Paul chapel. Most disappointing of the series was the Augsburg College Choir. Their performance was excellent but the small crowd was almost lost in the sanctuary of the Hamline Methodist Church. Dennis Moffat, concert pianist, closed out the series for this year. Mr. Moffat was the sole returnee from last year's series.



Teams & tours cover area for Christian service

AT LEFT: An important part of the work of Christian service teams in rest homes is the personal contact made by team members. **BELOW LEFT:** Maureen Baxter covers her lesson with a flannel board for a junior class. **BELOW RIGHT:** Cindy Brown assists one of the kids from Ober Club.

This year, gospel teams were sent to churches throughout the central states. Most groups stayed in Minnesota, Iowa and Wisconsin, but the "Four Parsons" traveled as far as Ohio over the Easter break.

Other groups served rest homes and missions on a regular basis. In addition, teams made regular appearances at the Greenbriar Home for retarded men and Ober Boys' club and Sky Pilots at Soul's Harbor which work with center city children.



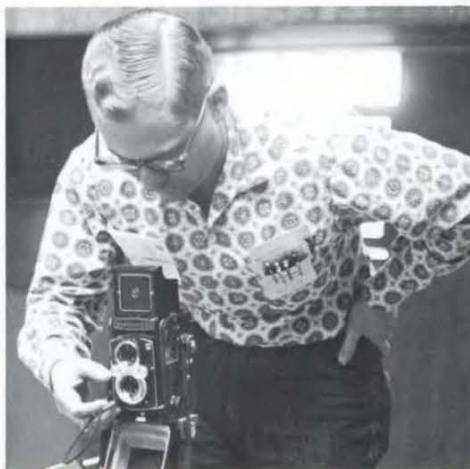
BELOW: Editor Dave O'Brien presented the '67 Shield to students and staff in a special Shield chapel last fall. AT RIGHT: Sorting pictures was one of the less inspiring jobs offered Faith Boese who stuck it out through a second year of Shield work.



Shield goes to color, common line for '68

The '68 edition of the *Shield* saw a number of innovations in its production. Most striking of these is the direct line photo process used for the cover design and the full color pictures in the opening section. Less noticeable to the non-initiate is the shift to the common line layout pattern. Past editions have used the common line concept but this is the first to incorporate it throughout the book. Dave O'Brien completed his second year as editor with the aid of Faith Boese, Rich Brown, Margaret Taylor, Cliff Sandell and Rick Porter on the editorial staff, John Chapman, ad salesman and Wayne Peevyhouse, photographer.

AT RIGHT: Much of the photography in this year's *Shield* was done by Wayne Peevyhouse who also served as photographer in residence for SPBC students.



Prayer band projects aid missions, workers

This year's prayer bands perpetuated the seemingly age old tradition of one-a-week prayer periods specifically designed for the support of nine different areas of mission activity. Correspondence, pictures, speakers, tapes and exhibits aided members in gaining knowledge of the field they had chosen to support. In addition to these activities, most of the prayer bands selected projects which their offerings went to support.



TOP: Winter prayer band presidents were responsible to their groups for the dissemination of information and prayer requests. ABOVE LEFT: Doug Howard prepares a tape from one of the missionaries supported by his prayer band. AT LEFT: Correspondence with the field helped to keep the spring prayer bands current on mission developments.

Improvement of dorm facilities this year's goal

The women's Dorm Council, with Emmy Raney serving as president, opened the school year with their annual Big Sis-Little Sis Party, and continued throughout the year with activities of interest to the girls. Co-operation between the two Dorm Councils resulted in a successful Christmas open house and a "Dorm Daze" party attended by members of both dorms.

The Men's Dorm Council, directed by Rich Brown, installed a new TV and cleared up little headaches such as poor drinking fountains and out-of-order milk machines.

AT RIGHT: Men's Dorm Council. First row, Don St. John, Rich Brown, Jim Koroly, Tom Dunn. Second row, Roy Reese, Joe Newman, Don Wiggins.



ABOVE: Women's Dorm Council. First row, Dorothy Ronzheimer, Barb Brown, Grace Lord, Diane Graff, Linda Thomas, Janell Ballagh. Second row, April Kowalchuk, Patty Oswalt, Emmy Raney, Sue Conner, Bonnie Narwold, Linda Romin, Mary Dohrmann.

BELOW: Choral Club members enjoy the benefits of a democratic society as they vote for the selections to be used in an abbreviated chapel appearance. Rick Porter (in the back row) is a graphic argument against a democratic society.



Mr. Hardwick directs choir in farewell season



ABOVE: Dianne Esau, the Choral Club organist, is pictured during a pre-chapel rehearsal. AT LEFT: The choir broke up into instrumental groups for some of their numbers. Barb Brown, on the tympani, and Kae Russell with the cymbals formed the percussion section. Becky Pugh was regular pianist.

This year, Choral Club conducted its early practices with an eye toward the spring tour which included concerts in the sunny tourist meccas of Florida and Georgia. Their first local concert was given at the First Baptist Church in Minneapolis during the National Church Music Fellowship convention. Choral Club closed their 1967 season with the "Christmas Internationale" in cooperation with Girls' Choir and Male Chorus.

After extensive preparations on the part of Director Thom Hardwick and president Warren Lightbody, Choral Club jetted to Atlanta on March 27 to begin their tour. A stopover at Bibletown, USA, highlighted the nightly concert series in Florida.

Choral Club filled their year with church concerts, the presentations of the Easter portion of Handel's *Messiah*, the commencement musicale, and commencement exercises proper.

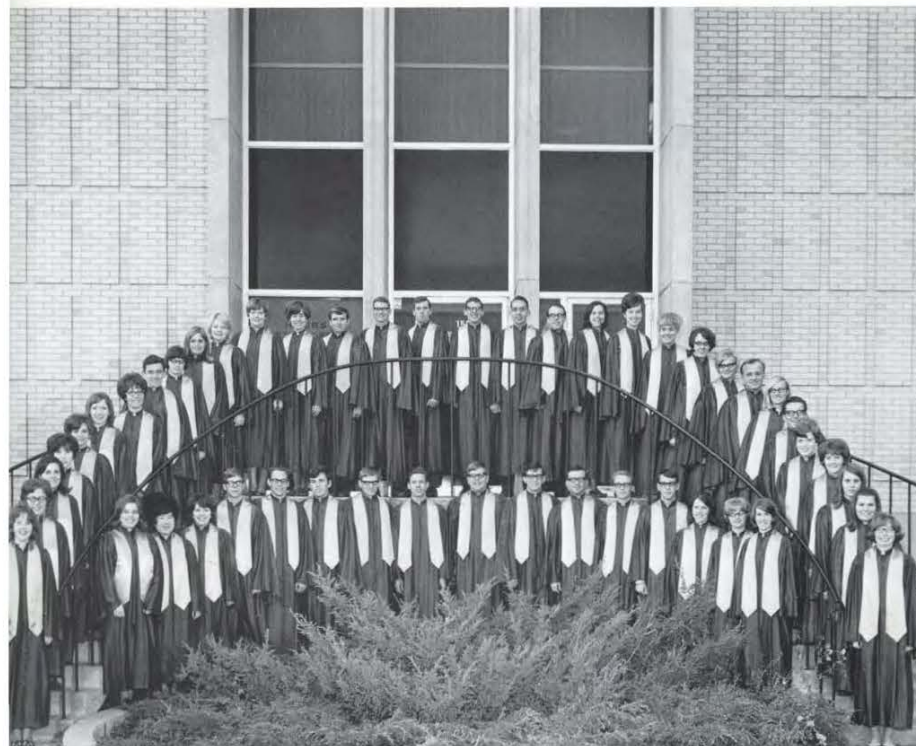
AT RIGHT: Choral Club took part in the Christmas musicale, held this year at the Hamline Methodist Church. The program consisted of Christmas carols from around the world.



Choral Club hits Florida for 2 week tour



ABOVE: A part of the program consisted of numbers sung under the leadership of student director Gordon Seiler. Gordie works at getting things organized during a practice session before their performance in chapel. AT RIGHT: The trombone trio adds their bit of brass to one of the instrumental sections.



Choral Club: First row: Betty Schmidt, Karen Fujinaga, Linda Zweifel, Ken Severson, Jim Case, Brad Stoldt, Jim White, Doug Howard, Joel Klanderma, Dale Heckman, Gordie Seiler, Dennis Gorton, Paul Tyler, Joyce Kelm, Joy Erickson, Lois Jaques. Second row: Kay Merrill, Jo Ellen Worrell, Barb Brown, Kae Russell, Diane Esau, Joy Biddle, Pam League, Ken Wallis, Sue

Crawford, Sandy Olson, Jan Dahl, Roxanne Peterson, Joyce Spader, Don St. John, Rob Swanson, Norm Parks, Don Wiggins, Warren Lightbody, Tom Franklin, Mary Paul, Lois Merrill, Sharon Bush, Becky Pugh, Carol Setterloff, Leonard Pearson, Judi Heinrichs, Dwight Williams, Virginia Epp, Dicki Bulkley, Linda Strawser, Sandy Puzia, Sharon Holzkopf.



AT LEFT: Marv Backstrom, Jim White, and Rick Porter take part in the important prayer service preceding a concert.



Varied musical programs presented in area, on

ABOVE: Girl's Choir. First row, Bonnie Narwold, Cheryl McKenzie, Patty Stensgaard, Leigh Ann Spaulding. Second row, Gwen Franz, Martha Dresser, Dorothy Ronzheimer, Faith Boese, LaVonne Gorsh, Jane Garwood, Pat Kremenak, Evonne Unger, Judy Scherrer, Becky Larson. Third row, Kathy McClain, Grace Lord, Elizabeth McNeely, Bonnie Schuppman, Donna Cox, Arlene Jashinske, Janell Ballagh, Judy Warner, Sue McGarvey. Fourth row, Linda Thomas, Mary Black, Bev Evans, Sue Thomas, Linda Romin, Sue Bowell, Pat Bishop, Diane Graff, Shirley Nelson. Fifth row, Mary Ann Brock, Bonnie Kuehne, Ruth Losli, Lynda Lapp, Linda LeCompte, Romaine Larson, Fran Wright, Judy Anderson, Mary Dohrmann, Ina Bucholz. **AT RIGHT:** Male Chorus and Brass Ensemble. First row, Mary Paul, Larry Spader, Ernest Vanaugh, John Mowery. Second row, Jim Wall, Sandy Werner, Dean Dainsberg, Dwight Williams. Third row, Roy Reese, Doug Reed, Mike Nylin, Don Block, Craig Strawser. Fourth row, Jim Koroly, Dick Gillick, Earl Peace, Bernard Badtke, Gordon Fisher. Fifth row, Leonard Greenberg, Chris Nelson, Doug Oyen, Larry Morris, Walter Lowe, Greg Strohl.



BELOW: Craig Strawser of Male Chorus and Dean Jacobs of Choral Club grin like a pair of mischievous cherubs while awaiting the beginning of the Christmas Internationale program, in the basement of the Hamline Methodist Church.



The Girls Choir completed a busy spring concert season in Twin Cities area churches before spending 18 days on a summer tour that took them through Wisconsin, Michigan, Indiana, Illinois, Ohio, Pennsylvania, West Virginia, Iowa, Nebraska and into Canada. The group consists of nearly 50 voices and an instrumental group. Mrs. Lucille Brown, assisted by Mrs. Carolyn Dean at piano or organ, directs the choir.

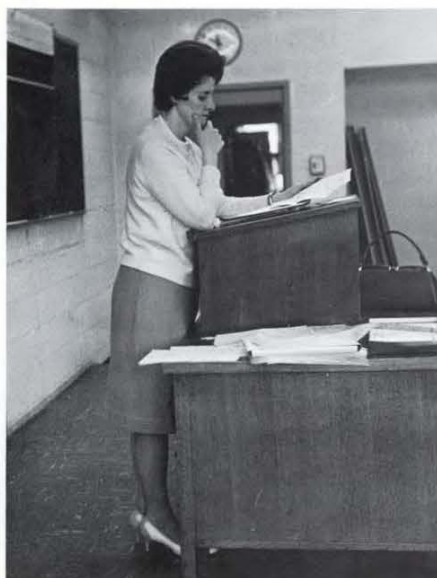
Male Chorus, SPBC's newest musical organization, and the band are both directed by Mr. Ray Schweizer. These groups presented concerts in the Minneapolis-St. Paul area in addition to a few weekend concert trips.

tour by Band, Male Chorus, and Girls Choir



ABOVE: Band. First row, Joyce Gerkovich, Ruth Carr, Evonne Unger, Pat Kremenak, Janice Carlson, Carol Victoreen, Judy Armstrong, Lynda Lapp, Becky Folstrom. Second row, Dean Dainsberg, Dwight Williams,

Sandy Werner, Lynn McMahon, Mary Paul, Larry Spader, Walter Lowe, Connie Spader, Steve Stumbo, Roy Reese, Rick Porter, David Woods.



ABOVE: Working in collaboration with her husband, Mrs. Marilyn Weldin has prepared a number of books and teaching tools for use with the lower grades. Mrs. Weldin teaches Christian education.



ABOVE: Coming close to the Renaissance ideal of the "complete" man, Mr. Sidney Nelson, instructor in ancient and US history, is also a printer, a biologist, pastor of a Baptist church and multi-lingual. Mr. Nelson is working toward his doctorate at the University of Minnesota.

BELOW: With his Master's degree from Luther Seminary, Mr. Joseph Tewinkel teaches in the history department, of which he is the chairman, and in the Bible and theology department.



Degree programs offer wide range of grad work in history, philosophy, theology

The largely liberal arts oriented curriculum of the first two years at SPBC provides a broad base for further studies in the chosen realm of specialization. Courses are offered in natural and social sciences, languages, history, philosophy and other areas.

The English department is working with a "controlled reader," a mechanical device which encourages progress in speed reading up to 1000 words per minute. The department has also acquired a copy of the Oxford English Dictionary and over 100 hundred volumes of critical analyses of literary works for the library.

The preseminary program offers degrees in history and philosophy. Grads in these programs can go on for further study in seminary or graduate school. This year's history program will be expanded to include a course in medieval history and another, more detailed course in American history. This expanded program is intended to give the history major a greater choice of courses and will improve his background in history.

Greek studies are directed especially toward ministerial students. Members of the advanced class were given an opportunity to use their knowledge of their subject in a practical situation as they were called upon to preach, either in chapel or in area churches. French is also offered as a second language course and the addition of first-year Spanish has been proposed for next year.



AT LEFT: Dr. John F. Gates does double duty as chairman and teacher in the philosophy department and teacher of Bible. Dr. Gates deserts Minnesota this summer for a Holy Land tour.



ABOVE: One of the leading educators in the C&MA, Dr. Donald Trouten, who has in the past two years headed the Alliance study group on education and has been nominated for the offices of both education secretary and president of the society, serves as academic dean and chairman of the Christian education department.



Sciences, liberal arts essential to education

Studies in the major liberal arts areas of history, philosophy and languages are supplemented by studies in fields which are not represented by entire departments but which are essential to rounding out a comprehensive liberal arts education. Both social and physical sciences are represented with courses in zoology, botany, sociology and psychology.

The Christian education department is intended to prepare graduates for work in churches as educational and youth directors. It is not restricted to this, however. Graduates in the religious education program may also choose to follow a program offered at the University which grants a degree in elementary education in an additional four quarters of work.



TOP LEFT: Mr. James Treece teaches sociology on a part time basis. **TOP RIGHT:** A retired missionary, Mr. Peter Voth uses his field experience in teaching French. **ABOVE:** With masters degrees in both botany and zoology, Mr. Benjamin Van Wagner teaches biological sciences.



TOP: A part time counselor in the lower division office at the University of Minnesota, Mr. George Thompson handled a full load of speech classes, coming into contact with most freshmen. **ABOVE LEFT:** A graduate of Trinity College, Deerfield, Illinois, and Northern Michigan University, where he earned his Master's

degree, Mr. Stanley Larson taught both English and world literature. **ABOVE RIGHT:** Miss Judy West, who shared duties in the English department, is leaving St. Paul next year to do work on a master's degree in counselling.

Missions, Bible central



ABOVE: In his 28th year with the school, Rev. Stanton Richardson serves the college as theology teacher, counselor and vice-president. ABOVE RIGHT: In addition to his position as chairman of the missions department, Rev. William Conley teaches anthropology, linguistics and evangelism. Rev. Conley formerly served the Alliance as a missionary to Indonesia.



ABOVE: Teaching courses in both Old and New Testament, Hermeneutics and contemporary theology, Rev. James Mason, chairman of the Bible and theology department, is also an avid outdoorsman who has spent his last three summers travelling nationwide with a New York based organization, Tour-A-Camp, Inc.

theme of curriculum



ABOVE: During the last school year, Rev. Donald Alexander taught at three different colleges and pastored the University Avenue Congregational Church. Besides teaching Greek, Bible and philoso-

phy, Mr. Alexander administered the college's athletic program. He is leaving in August for the Alliance Bible Seminary, Hong Kong.

Bible and theology is the most extensive department in the school. Every graduate must have spent a minimum of thirty hours in Bible courses, regardless of major. These courses range in depth from Old and New Testament History offered to freshmen to Contemporary Theology for seniors.

Curriculum revision has been going on in the department. Among the changes is the addition of a course in the General Epistles to be offered during the school year and during summer school. Furthermore, the three-year diploma program, supervised by this department, has been made more flexible.

Pastoral internship, a program for senior ministerial students, involves a semester of pastoral apprenticeship. Each student is assigned to an area pastor, with whom he is expected to spend at least three hours a week working in church situations.

Actual Bible courses are only a part of the training offered prospective preachers. A whole segment of instruction is offered in practical theology for those who do not plan to continue their studies in seminary.

The missions department reports that more candidates made application for foreign service this year than since the post war period. In fact, SPBC trained more candidates this year than did any other Alliance institution.

The missions curriculum has been somewhat revised, especially in the area of phonetic studies. Because of the extensive study course required of missionary candidates at the Toronto Institute of Linguistics, the emphasis of the Introduction to Linguistics has shifted considerably.

Dr. Vincent Fromke, U of M Medical School, conducted the seminar for missionary nurses. This course is intended to give students a background in medical problems not ordinarily covered in nurses training. The purpose of the department, preparation of candidates for the field, is accomplished in other courses. Introduction to Missions attempts to provide an understanding of the history, purpose and elementary principles of missions while Principles of Missions takes the advanced student into the basic why's and how's of mission work.

Music department provides training and practical experience in church music

AT RIGHT: Teaching piano at St. Paul is only one of the occupations of Mrs. Nathalie Haag who is also music director at Soul's Harbor in Minneapolis. BELOW LEFT: Mrs. Carolyn Dean, returning to the music staff after a short absence, teaches piano, organ and marimba. BELOW RIGHT: Choral Club director, Mr. Thom Hardwick is, with Mrs. Haag, a recording artist with Word Records. Mr. Hardwick also teaches courses in music.



72



TOP LEFT: Bringing over 40 years of teaching experience to his students, Mr. Harold Brundin is both a vocal instructor and a well known baritone soloist. AT LEFT: Mrs. Ruth Fardig, former staff pianist and organist for station WMBI in Chicago, teaches piano at SPBC. BELOW: A Salvation Army Band director, Mr. Ray Schweizer directs both Male Chorus and the SPBC band in addition to teaching courses in music. BOTTOM: Chairman of the music department, Mrs. Lucille Brown also directs the Girls Choir.

The music department serves St. Paul in a variety of ways. For the music major a Bachelor of Science is offered, following courses in theory, composition, music history, pedagogy, and other music subjects in addition to the core of liberal arts and Bible subjects.

In some of its courses, the department deals with students whose major interests lie outside the realm of music. Congregational conducting is available to pastoral students and private lessons are available to anyone interested.

A large part of the music program is devoted to the performing groups. Choral Club, Male Chorus, Girls Choir and Band are all open, by audition, to everyone. The Christian service office is indebted to this department for the many vocal and instrumental groups used on various assignments.





PERSONNEL

AT RIGHT and ABOVE RIGHT: A farewell service was held for Dr. and Mrs. Hardwick at Simpson Church on May 23. Many of the leaders of the Alliance were present. FAR RIGHT: Dr. Hardwick made it a custom to share graduation day breakfast with the graduates and their families.



Dr. Hardwick ends nine years as president

Late this spring the board of trustees announced the resignation of Dr. Harry T. Hardwick as president of the college as of July 31. Dr. Hardwick has accepted the position of president of LeTourneau College, Longview, Texas. He stated that he accepted the new responsibilities only because of an inner conviction that God was directing him to do so. He added, "My enthusiasm for the new campus in Ar-

den Hill remains. I will continue to work as a member of the team until it becomes a reality."

Dr. Hardwick has been president of the college for nine years. His administration has seen the doubling of student enrollments, granting of full accreditation from the University of Minnesota, expansion of curriculum and the final acceptance of the proposed new campus.

BOTTOM: President Hardwick and family. First row, Mrs. Hardwick and granddaughters Susan and Kimberley, Dr. Hardwick. Second row, Rev. and Mrs. Robert Hardwick, Dr. and Mrs. Stanley Hardwick (parents of Susan and Kimberley), Thomas Hardwick and Leonard Hardwick. Robert is on the faculty of Eastern Mennonite College. Stanley teaches at Bethel Seminary and Thomas teaches at St. Paul. Leonard studied at St. Paul and is now attending the University of Minnesota. BELOW: Dr. Hardwick announced his resignation to a stunned student body during an academic convocation.





TOP: Assistant to the President for development, Rev. Russell Ferry has worked with Dr. Hardwick in promoting and administering new campus plans. **ABOVE:** Mr. Marvin Thompson, a new addition to the staff, works as Director of Public Affairs and is concerned with presenting the college and its programs to the membership of the Alliance.

Arden Hills approves



ABOVE: Plans, blueprints and the new campus model are all the work of Kilstofte and Vosjepka, Wayzata architects. Their original work included the designs for the unique tear-drop dormitories, circular chapel and the single-unit education and

apartment-dormitory complex



administration building. Since new developments have broken, they have also finished the initial designs for the apartment-dormitory complex.

April 29 of this year may prove to be a pivotal date in the history of St. Paul Bible College. On this date, the Arden Hills Council approved the projected new campus to be constructed on Lexington Avenue in Arden Hills. Prior to this time, they had rejected the proposed apartment section unanimously. Now, with their approval, development can go ahead on both the education building and the apartment-dormitory complex bypassing what had been phase one of construction.

The apartment complex will take the place of the planned dormitories. With the necessity of building these delayed, pledges and offerings can be directed to the construction of what had been phase two and Mr. Cal Garley can take over construction of living quarters. The advantages of this arrangement are apparent. With the whole campus finished at once, there will be no problems with transportation from one campus to another and the crowded and outdated facilities in the Midway district can be sold years before had been expected.

The new development, to be located on an additional 17 acres adjoining the original 35, will consist of four three story buildings containing 188 apartments, garages and a shopping facility. Each apartment will open from the living room onto a balcony. The apartment set aside for student residence will be slightly different from those intended for rental. The kitchen will be unfurnished and will serve as a dressing area for the ten students who will share each apartment. Each unit has two large bedrooms, one of which is earmarked for use as a lounge, two baths and a large living room. The architects have indicated that, although original dormitory plans had called for only two students to a room in the tear-drop dormitories, the new, larger rooms will provide for more square feet of living area per student.

AT RIGHT: Dean of Students Rev. Charles Shepson also teaches homiletics. FAR RIGHT: Formerly a missionary to Africa, Rev. Ray Cook now serves as assistant to the president for stewardship. BELOW: Rev. Viron Miller keeps a close tab on the school's financial affairs. BELOW FAR RIGHT: Dean Shepson's secretary, Sue Hanaford, is also responsible for administering the Christian service program.



AT LEFT: Janet Allwine, a SPBC grad, is the admissions and records secretary. BELOW LEFT: Handling correspondence and other secretarial duties for Rev. Ferry is Elaine Dineau, development secretary. BELOW CENTER: Dr. Trouten's secretary is Faith Brokopp. BELOW RIGHT: Diane Jensen is both public affairs secretary and a member of the senior class.



Staff handles essential administrative work

BELOW: Handling the money that Mr. Miller administers and taking the pitiful offerings of tuition-paying students is the job of head cashier, Carrolle Schaefer.



BELOW: Keeping the books for the school and its dozens of organizations and activities keep head bookkeeper Frances Staley busy.



ABOVE: Handling all the records and processing applications for admissions is a part of the job of registrar, Mr. Merton Tanner. AT LEFT: Estella Reich handles most of the detail work for Mr. Tanner.



Staff members keep school functioning,

TOP LEFT and TOP RIGHT: Alyce Pervier and head cook Doris Lapp keep the serving line moving for the more than three hundred people who eat three meals a day in the dining room. **AT RIGHT:** Mrs. Edna Teeter handles the administration of the book store, orders texts and library books and maintains a vigorous Sunday school and DVBS literature business. **FAR RIGHT:** Mrs. Helen Cook is in charge of the mimeo and mailings room. **BELOW:** Karen Parker is school receptionist and switchboard operator.



MISSING PERSONS:

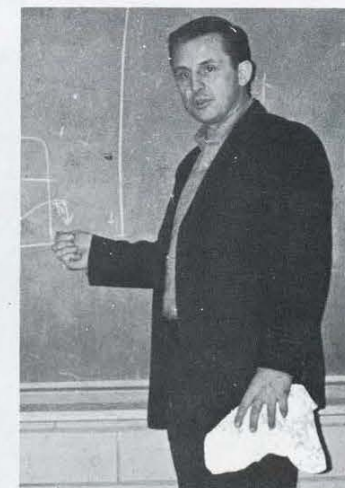
Bergman, Mr. Theodore — Music Instructor
Cahow, Mrs. Junice — Cook
Davis, Mr. Ronald — Assistant Dean of Men
Eastman, Mr. Martin — Assistant Superintendent of Grounds
Hahn, Mr. Robert — Superintendent of Grounds
Hindmand, Mrs. Claudine — Associate Dean of Students
Kallem, Mrs. Shirley — Assistant Dean of Women
Root, Mrs. Bernadine — Housekeeping Supervisor
Root, Mr. Ross — Music Instructor
Smid, Miss Marcelyn — Librarian
Swartz, Mr. Marvin — Music Instructor
Ysker, Mrs. LaVerne — Assistant Book Store Manager



students fed



ABOVE LEFT: Mrs. Ann Stumbo took over management of the Nibble Nook at the beginning of second semester. **ABOVE CENTER and ABOVE RIGHT:** Brownie Zopfi and Esther Stoesz round out the kitchen staff.



ABOVE LEFT: A Canadian from the East, Kay Hackney switched to St. Paul this year to work as Dr. Hardwick's secretary. **AT LEFT:** Jean Robinson was secretary for the music department. **ABOVE:** Bud Pierce is one-half of St. Paul's part-time coaching staff.



BELOW: Senior Class Officers. Michael Bortel, President. Mary Dohrmann, Secretary. Glen Showell, Vice-president. Bob Weidman, Treasurer. AT LEFT: Jim Case and Marlin Skiftstad explore the intricacies of their academic gowns prior to baccalaureate service at Northbrook Alliance Church.



The graduates: Class of '68

AT RIGHT: Making one of his last visits to the business office is Marv Backstrom, wizard of high finance for the Choral Club.



Judith L. Abramson, Minneapolis, Minnesota
Diploma



Marvin A. Backstrom, Maddock, North Dakota
Bachelor of Arts



Robert L. Biggs, Des Plaines, Illinois
Bachelor of Arts



Michael L. Bortel, Bowling Green, Ohio
Bachelor of Arts



Fernellyn J. Brown, Britt, Iowa
Bachelor of Science in Missions for nurses



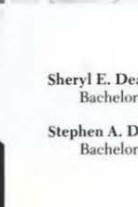
James C. Case, Max, Nebraska
Bachelor of Science in Missions



Raymond E. Cook, St. Paul, Minnesota
Bachelor of Science in Missions



Rose A. Cook, St. Paul, Minnesota
Diploma



Donna J. Cox, McDonald, Pennsylvania
Bachelor of Science in Missions



Sheryl E. Dean, St. Paul, Minnesota
Bachelor of Science in Missions for nurses



Stephen A. DeFor, St. Paul, Minnesota
Bachelor of Arts



Bonnie L. Dennis, Orrville, Ohio
Bachelor of Science in Missions for nurses



Mary C. Dohrmann, Taylor, North Dakota
Bachelor of Religious Education



AT RIGHT: As a grand finale to his unsuccessful tight pipe walking act, Glen "Beaner" Showell falls gracefully to the side-walk below. BELOW: The hours of outdoor activity put a real edge on the appetites of senior retreaters as is evidenced by this lunch room scene.



Donald L. Fischer, St. Paul, Minnesota
Bachelor of Arts

Dale I. Groeneweg, Balaton, Minnesota
Bachelor of Science in Missions

Sharon F. Gustafson, Wauwatosa, Wisconsin
Bachelor of Religious Education



Judith Heinrichs, Wolf Point, Montana
Bachelor of Music

Audrey A. Henry, Des Moines, Iowa
Bachelor of Science in Missions

Ilene D. Hunter, Boone, Iowa
Bachelor of Religious Education

Ricky B. Jashinske, Milwaukee, Wisconsin
Bachelor of Arts

Elizabeth Jeanneret, Orrville, Ohio
Diploma

Diane L. Jensen, Tyler, Minnesota
Bachelor of Music



AT LEFT: Senior class president Mike Bortel steals a few minutes from the burdens of his office to go for a boat ride with his fiancée, Darlene Martin.



Kimit Johnson, Duluth, Minnesota
Diploma

Marilyn J. Kelm, Janesville, Wisconsin
Diploma

Grace E. Lord, New Castle, Indiana
Bachelor of Arts

Rebecca Lynn, Kowloon, Hong Kong
Bachelor of Arts

Darlene Rae Martin, Missoula, Montana
Bachelor of Arts

Lynn M. McMahan, Clio, Michigan
Bachelor of Science in Missions for nurses



Will Jo Medin, Menomonee Falls, Wisconsin
Diploma

James G. Medin, Menomonee Falls, Wisconsin
Bachelor of Science in Missions

David E. O'Brien, Minneapolis, Minnesota
Bachelor of Arts



Patricia L. Oswalt, Fort Wayne, Indiana
Diploma

Marvin T. Parker, Toledo, Ohio
Bachelor of Religious Education

Judith Lee Pata, East Cleveland, Ohio
Bachelor of Science in Missions



Emmagene Faye Raney, Drayton, North Dakota
Bachelor of Arts

James D. Rightler, Royal Oak, Michigan
Bachelor of Science in Missions

Barbara L. Rightler, Tracy, Minnesota
Diploma



Philip P. Ronzheimer, Elmhurst, Illinois
Bachelor of Arts



AT RIGHT: The Four Parsons, a quartet made up of Bob Weidman, John Walker, Phil Ronzheimer and Mike Bortel travelled extensively as a Christian service team. They also performed as slightly salty swabs for the military missionary meeting.



Julianne Soderholm, St. Paul, Minnesota
Bachelor of Religious Education

Gwendolyn Kae Schmidt, Sturtevant, Wisconsin
Bachelor of Science in Missions for Nurses

Rosemarie Scott, Hemingford, Nebraska
Bachelor of Religious Education



Gordon O. Seiler, Wyandotte, Michigan
Bachelor of Music

Karen K. Setterberg, Slayton, Minnesota
Bachelor of Science in Missions

Marlin L. Skifstad, St. Paul, Minnesota
Bachelor of Science in Missions



Darrell J. Smith, Pittsburgh, Pennsylvania
Bachelor of Science in Missions

Leigh Ann Spaulding, Abrams, Wisconsin
Diploma

Michael D. Van Langen, Kamrar, Iowa
Bachelor of Arts



Robert D. Weidman, Dixon, Illinois
Bachelor of Arts

Mary A. Westbrook, Omaha, Nebraska
Bachelor of Religious Education

Sharon E. Wilkins, Foreston, Minnesota
Bachelor of Religious Education



Frances Marguerite Wright, Ypsilanti, Michigan
Diploma



Martha M. Younkin, Connellsville, Pennsylvania
Bachelor of Science in Missions for nurses

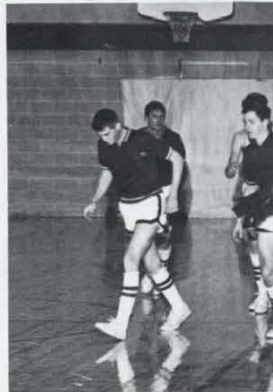




ABOVE: Junior Class Officers. Larry Myers, Vice-President. Sue Conner, Secretary. Bob Kallem, Treasurer. John Chapman, President.

Juniors: the class of '69

AT RIGHT: Transfer student Rich Brown lopez off the basketball court with the same determination that catapulted him to the pinnacle of SPBC leadership, presidency of the Student Council.



Dick Abramson
Clyde Baker
Rich Brown
John Chapman
Janice Clasen

Terry Conn
Sue Conner
Doug Domier
Bev Evans
Ken Freeby

Dave Gade
Linda Gettle
Karen Grove
Dan Hecker
Regina Hopland



Doug Howard
Arnold Hustad
Steve Johnson

Bob Kallem
Sue Kanneman
Warren Lightbody



ABOVE LEFT: The occasional swimming parties at the Hamline pool gave students their only real opportunity to let loose and fly. AT LEFT: Terry Stumbo regulates the static for greater incoherence during one of Mrs. Weldin's Ed Psych films.

Ruth Losli
Mark Lundstedt



Carol Manske
Karen Merrill



Yvonne Murphy
Larry Myers



Linda Olsen
Wayne Peevyhouse



Lee Ray
Roger Reibling



AT RIGHT: Waltzing prettily, Gordie Seiler and Rick Porter take advantage of the opportunity for social interaction provided by the all school Halloween party.



TOP: Collapsed in his traditional place and traditional manner, Clyde Baker, Montana's answer to African sleeping sickness, is one of the last of the bigtime loungers. **ABOVE:** Fred Dellinger launches one of his mighty, incomplete passes in a front lawn football game.



BELOW: Nibbling daintily in the "Nibble Nook," Sue Kanneman is the exception to the rule which should rename the snack shop the "Gorging Grotto," or some other such descriptive appellation. **AT RIGHT:** Larry Myers demonstrates one of the skills acquired at St. Paul which he hopes one day to apply toward making his way in the world.



Dorothy Ronzheimer
Darren Rurup
Kae Russell



Joyce Spader
Terry Stumbo
Margaret Taylor



Paul Tyler
Wanetta Wagoner
Lars Wilhelmssen
Jo Ellen Worrell

Sophomores: the class of '70



AT LEFT: Returning from a sumptuous repast of meatloaf and air, April Kowalchuk and Gary Hubin skip heavily up the walk to "Old Main." BELOW: Sophomore Class Officers. Georgia Manske, Treasurer. Ken Ehresman, Vice President. Joyce Widfeldt, Secretary. Monty Newton, President.



Lola Anderson
Pauline Arnold
Maureen Baxter



Kathleen Bernstrom
Mary Black
Faith Boese



Boyd Bremner
Ned Campbell
Cheryl Carlson



BELOW LEFT: John Lohman and Ken Ehresman work diligently at the dismemberment of a frog in Zoology lab. AT LEFT: Doing her impersonation of Mickey Mantle in the outfield, Karen Domier attempts futilely to hide the evidence as her husband, Doug, enjoys her discomfort.



Eunice Christy
Sue Crawford



Karen Domier
Marilyn Eerdman



Ken Ehresman
Joy Erickson
Vicki Erickson
Dianne Esau



Bruce Flesner
Bob Foster
Karen Fujinaga
LaVonne Gorsh



AT LEFT: Rooftop sunbathing takes a pair of anonymous girls from the less inspiring environment of their rooms and the more restrictive activities of study.



ABOVE LEFT: Christmas open house finds Barney attired in his red and yellow Christmas striped summer Santa suit and his most winning "The goodies are in the sleigh" smile. ABOVE: Georgia Manske and April Kowalchuk attack their frog with considerably less relish than did John and Ken.

Joyce Griggs
Darlene Hoy
Gary Hubin
Terry Huffman
Bruce Humphrey



Myles Hustad
Dean Jacobs
Arlene Jashinske
Bev Johnson
Richard Johnson



Judy Johnson
Wes Keller
Joel Klanderma
Sharon Kleinendorst
Diane Koland



Linda Kondracki
April Kowalchuk
Pat Kremenak
Dave Lawrence
Pam League



John Lohman
Barb Mansfield
Georgia Manske
Pearl Matson
Denise McDonald



Lois Merrill



AT RIGHT: Marty Dresser trades in her violin for the more comforting teddy bear as she joins the crowd of weirdoes at the Halloween party. BELOW: Karleen Patzen and friends help to beautify the campus by serenading from their window.



Chris Nelson
Joe Newman
Doug Oyen



Karleen Patzen
Bonnie Payne
Earl Pearce



Becky Pugh
Sandi Puzia
Janet Raebel

Jon Ramsay
Doug Reed
Betty Richter
Linda Romin
Marian Roscoe



Don St. John
Alyce Sawyer
Esther Schleh
Bonnie Schuppman
Gayle Showell



Maxine Slater
Terri Slocum
Nancy Sneary
Connie Spader
Larry Spader



Pat Stensgaard
Marjorie Strobel
Rob Swanson
Linda Thomas
Linda Taffin



AT LEFT: Raebel reads reluctantly.
BELOW: Trying to decide between two gold neckties, Doug Reed prepares himself for the big "coming out" musicale.



AT LEFT: Betraying what appears to be a disturbing remnant of paganism, Pam League flies fearfully from the pursuit of a student specter.



Jim White
Joyce Widtfeldt
Don Wiggins



Sue Williams
Nancy Wilhelmsson
Dan Winkelman
Gayle Wright



AT LEFT: Keeping a respectful distance from the small but efficient mouth of Dan Newsom's Florida born roommate, Joel Klanderman does field research on the eating habits of the non-indigenous baby alligator.

Freshmen: the class of '71



AT LEFT: Freshman Class Officers. Sandra Olson, Secretary. Don Block, Treasurer. Tom Franklin, Vice-President. Mike Nylin, President. ABOVE LEFT: Marty Dresser provided the "folk soul" for the march on chapel, led by the fall missionary cabinet, protesting non-payment of pledges. TOP RIGHT and ABOVE RIGHT: Coming to a new and intimate understanding of the automobile, Romaine Larson and Linda Reigel work out their day of servitude paid for at the spring banquet slave auction.

Claudette Abbott
Larry Anderson
Barbara Arant
Judy Armstrong
Janell Ballagh



Helen Berndt
Charlotte Black
Don Block
Barb Blum
Marsha Bolstad



Sue Bowell
Mary Brock
Ina Bucholz
Sandra Buchholz
Dickalon Bulkley

Sharon Bush
Barbara Cadmus
Janice Carlson
Ruth Carr
Dianne Christensen



Ann Christenson
Deborah Craven
Janet Dahl
Dean Dainsberg

Paul Dockter
Martha Dresser
Tom Dunn
Barbara Ekelund



David Eliason
Virginia Epp
Gordon Fisher
David Fluth
Rebecca Folstrom

Thomas Franklin
Jane Garwood
Joyce Gerkovich
Richard Gillick
Mary Goetsch

Fran Goetz
Diane Graff
David Grandy
Leonard Greenberg
Gary Halbersma

AT RIGHT: The May heat wave prompted at least one girl to forsake the mechanical, impersonal hair-dryer in favor of the afternoon sunlight.



Jon Hall
Loraine Hayden
Elsie Henke
Sue Henline
Sharon Holzkopf



Jared Huber
Linda Hunsicker
James Ireland
Steve Jensen
Linda Johnson



Ruth Johnson
Joyce Kelm
Terry Kern
Carol King
Bonita Kuehne

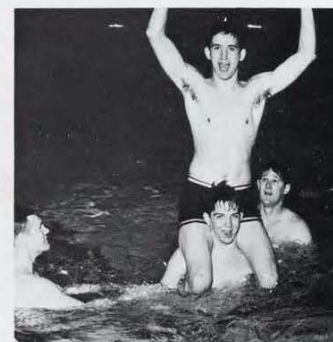


AT RIGHT: In keeping with current views on physical fitness, this frolicking foursome takes to their wheels in search of whatever adventure may be found outside Como's pavilion.



Harry Landaw
Lynda Lapp
Rebecca Larson
Romaine Larson
Mary La Tourelle

Linda LeCompte
Carolyn Lenox
Walter Lowe
Pauline Lund
Cheryl Mallow



FAR LEFT: With indoor lounging areas at a premium, an occasional couple takes refuge on the front steps, less comfortable but also less crowded.

AT LEFT: Wrestlers Harry Landaw and Walt Lowe rise up out of the Hamline pool like some two headed sea-monster in search of a somewhat amused Greek teacher.



Sandra Mapstone
Norma Marcinek
Kathy McClain
Sue McGarvey
Cheryl McKenzie

Sharon McMahon
Marilyn Miller
John Morgan
Larry Morris
John Mowery

Bonnie Narwold
Bob Neal
Shirley Nelson
Mike Newman

Dan Newsom
Shirley Norton
Hope Nussbaum
Michael Nylin
Sharon Ogg



Bruce Olson
Sandra Olson
Mary Paul
Marjorie Peterson
Roxanne Peterson



Elizabeth Phillips
Rick Porter
Ronald Porter
Roy Reese
Linda Reigel



AT RIGHT: The Freshman class was well represented in the 1967-68 Male Chorus. Loading the bus for their last concert of the year are Larry Morris and Dwight Williams.

Krista Rott
Virginia Ryther
David Sahlberg
Shirlee St. Cyr
Judith Scherrer



Betty Schmidt
Dennis Sears
William Sloan
Terry Smith
Connie Soderberg



Nancy Sorenson
Dwight Stein
Rebekah Steiner
Brad Stoldt



Eileen Stombaugh
Craig Strawser
Linda Strawser
Dawn Stubbs
Steve Stumbo



Donna Tallman
Sue Thomas
Mike Toavs
Clinton Trulove
Evonne Unger
Carol Victoreen



Ken Wallis
Judy Warner
Darlene Weigelt
Jessie Welbourn
Joy Welsh

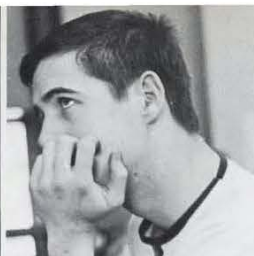


Sandra Wemer
Ruth White
Sherri Wible
Dwight Williams
Linda Zweifel



AT LEFT: Tom Dunn and Harry Landaw demonstrate the appetites and table manners that made them the terrors of the Nibble Nook.





FINIS

Editorial Comment

When I first assumed the editorship of the *Shield* back in the paleolithic year of 1966, my predecessor and mentor, then editor Keith Meerdink, told me that he enjoyed the acknowledgement page because it was the only place in the book where he felt free to speak his mind. I have since come to share that sentiment. I felt, however, that the title "acknowledgements" was too restrictive. Consequently, the title of this little section is "editorial comment."

We'll begin with the people who helped with the *Shield*. As has been the custom of the *Shield* in years past, staff members have been woefully neglected on the yearbook page and must be mentioned here. I would like to thank Faith Boese, Margaret Taylor, Cliff Sandell, Rich Brown, John Chapman, Wayne Peevyhouse, Donna Cox, Jan Raebel and a small multitude of others who in one way or another did a part of the work. A special thanks must go, this year as last, to Sheryl O'Brien (known last year as Sheryl Mertz) who did 100 pages of layout. I also have to thank a whole new set of relatives who suffered through pre-wedding bedlam complicated by pieces of yearbook scattered hither and yon through their otherwise orderly (for pre-wedding bedlam) home. New sister-in-law Jan Mertz who is now convalescing from a severe case of writer's cramp from doing all the coolie work beneath the editorial dignity, deserves mention. Finally, Mr. Conley and members of the faculty and staff whose help and cooperation have made my job that much easier.

Now to editorial comment. This book was a really simple one to compile. To use a cliché, it almost wrote itself. Underline almost. I suppose it is because the year recorded and the book recording it are both my last at St. Paul Bible College. It is never easy to end an association of four years' duration and in doing this, my final *Shield*, I have tried to include something of myself. Corny as it may sound, it is true. For all the complaining I have done, in chorus

with the rest of the student body, about this or that rule or inconvenience, I have grown to love St. Paul. For the most part, faculty members, except when papers have been due and finals imminent, have seemed more friends-highly intelligent friends-than teachers. To Mr. Tewinkel, who has been my advisor and seen me through the countless rough places in my chaotic career; To Mr. Conley, to whom I am indebted for opening the wonderful world of photography to me; To Mr. Alexander, who taught me a new way to approach truth; To Mr. Mason, who is as much responsible for what little I know of the Bible as any living man; To Mr. Nelson, whose enthusiasm and understanding helped me through both history and through a difficult decision; and to all the others with whom I have come in contact in my four years at St. Paul: You will never know how much I appreciate all you've done for me.

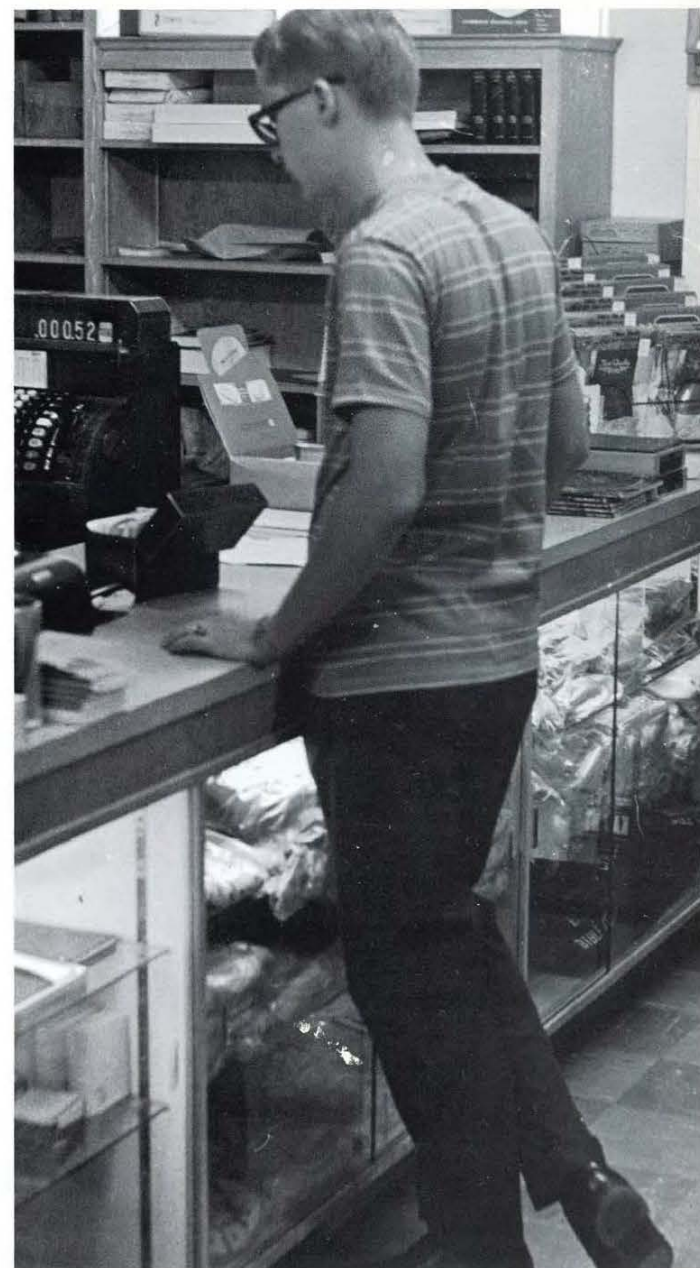
I also have to thank this school year. One reason the book went together so easily was the nature of the year itself. For the freshmen it probably didn't seem special. For me, and I think for many of the seniors, it was very special. It was a year when things happened. Not only the new campus developments but just the day-to-day things of school life. People seemed interested in one another and in the world around. Our planned activities seemed more vital. Like Dr. Hardwick, I feel good in leaving now, for it seems that SPBC is on its way up, and I'm proud to have been here when it started.

So, when you read this book, remember that it was written as a sort of labor of love, and if you don't already, maybe it can help you to share a little of that love.

Very sincerely,

Dave O'Brien

ADVERTISEMENT



St. Paul Bible College



*With
our
eyes
to
tomorrow
and
our
foundations
in
yesterday*

St. Paul, Minnesota

ST. PAUL BIBLE BOOKSTORE

1361 Englewood Avenue, St. Paul, Minnesota 55104

Member of Christian
Booksellers Association
and
National Association
of College Stores

Mrs. Edna Teeter, Manager



— BIBLES — BOOKS — RECORDS — SUPPLIES —



Complete Line of
Domestic and Steam Coals
646-6511

**GREAT LAKES
COAL & DOCK CO.**

2102 University Ave.

St. Paul, Minn

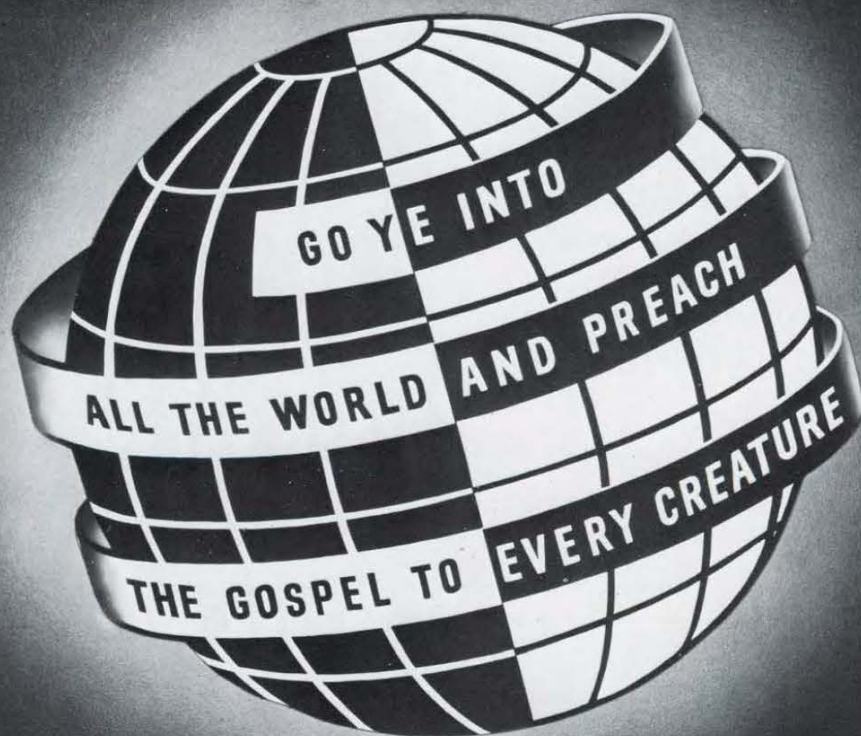
HAMLINE HARDWARE & PAINT



Benjamin Moore Paints

646-4049

Snelling and Englewood



The Officers and the International Headquarters of

THE CHRISTIAN AND MISSIONARY ALLIANCE

260 WEST 44th STREET

NEW YORK, N. Y. 10036

EARL'S "MISTER" PIZZA

**Pizza
Spaghetti
Subwiches**

Eat In
Take Out
Delivery Service

467 N. Snelling
645-2522

1748 N. Lexington
488-5585

Closed Sundays — The Lord's Day

Best Wishes
and
Sincere Appreciation
for the
Assistance Furnished Us
during the past year



MONTGOMERY WARD

1400 University Avenue
St. Paul, Minn.

Congratulations, Class of 1968



Two Convenient Locations

GREENBERG'S RAMBLER

Highway #10 West
Route #2
Anoka, Minnesota 55303
HA 1-4950

Route #2 Anoka
Nowthen, Minnesota
HA 1-8891 or
Elk River 441-1838

THE NORTHWESTERN DISTRICT OF

THE CHRISTIAN AND MISSIONARY ALLIANCE

Extends congratulations and best wishes
to the class of '68



New district offices located at
1475 W. Minnehaha Avenue
St. Paul, Minnesota 55104

A Christ-centered ministry in the interests of world-wide evangelism



for that
special occasion
remember

*Lindig
Midway
Florist*

1875 W. Larpenteur Ave.

**H
O
L
I
D
A
Y** **S
T
U
D
I
O**

Photographic
Portraiture
in
Natural Color
Oil
Black & White
225-7473

858 University Avenue

"Large enough to serve you ...
Small enough to know you."

HAMLIN CLEANERS

1-hr. dry cleaning service
6 days a week

Snelling & Minnehaha

St. Paul, Minn.

Midway 4-5885

WESTLUND'S Provisions Inc.

Quality Meats, Fish and Poultry
Quick Freeze Service and Frozen Foods

597 N. Snelling Ave. (Midway) St. Paul 4, Minn.
Locker Rentals—Midway 4-8621

MIDWAY TYPEWRITER EXCHANGE 736 N. Snelling Ave.



Home of world-famous Hermes typewriter

EXTRA CARE MAKES

Sanitary
FARM DAIRIES

PRODUCTS
EXTRA GOOD

For Service Phone 224-4991



ST. PAUL BIBLE COLLEGE

CHRISTIAN AND MISSIONARY ALLIANCE

Class of 1968:

Congratulations!

You are certified life members of the Alumni Association of the St. Paul Bible College, and invested with all the privileges and responsibilities thereof.

Executive Secretary — Marvin Thompson
President — Richard A. Flegle
Vice President — Phil Rychner
Recording Secretary — Mrs. Jonathan Hofer
Corresponding Secretary — Elaine Dincau
Treasurer — Mrs. Edna Teeter
Twin City Chapter President — James Treece
Committee Members: Ronald Fletcher
Clifford Malone
Rev. Norman Peterson
Mrs. Charles Weldin



The Guidance Insurance Agency

1425 Taylor Avenue.,
St. Paul, Minn.

Auto
Fire
Life
Health
Business
Church



CLIFF MALONE

645-9824

Your guide to complete protection

RONALD KEEPSAKE JEWELERS

(Now Two Convenient Locations)

Put the Sparkle on Her Hand and in Her Eye
433 Wabasha at 7th — CA 4-7131
A Few Doors From Riviera in St. Paul
Open every weekday until 9:00 P.M.

224 Highway 61
White Bear Lake
Open Friday until 9:00 P.M.

The Only Keepsake Jeweler in St. Paul

LLOYD'S PHARMACY

Accurate

PRESCRIPTION SERVICE

SCHOOL SUPPLIES

720 N. Snelling

District Advertising

1700 Wynne Ave., St. Paul

extends its

Congratulations

to the class of
'68

and its cordial

welcome

to new members
of future
classes

A Hearty "Well Done," Class of '68

from

The Omaha Heights Church
of the C&MA

3650 Crown Point Ave. Omaha, Neb.
Rev. David N. Becknell, Pastor

No Beer, No Liquor

Famous For
CHICKEN PIE

Better Than Home Cooking

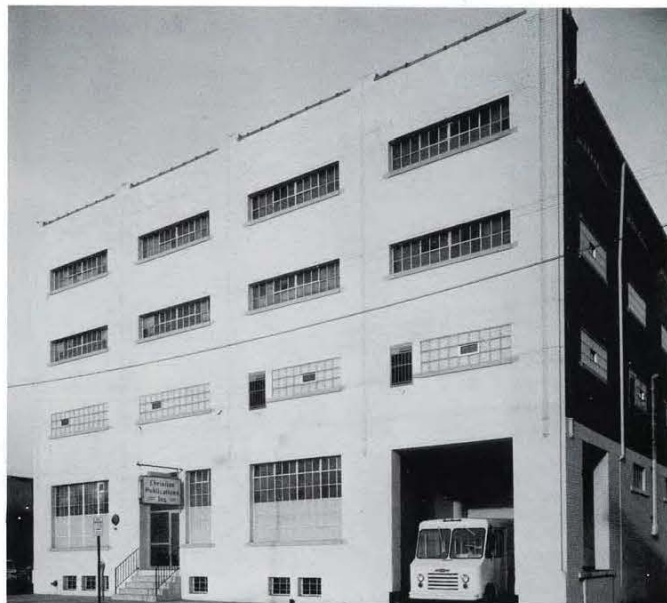
QUALITY CAFETERIA

11:00-2:00; 4:30-7:00;
Sun. 11:00-2:00
MI 4-6319

Snelling near Minnehaha, St. Paul

Compliments
of
CHRISTIAN PUBLICATIONS, INC.

25 S. TENTH STREET
HARRISBURG, PENNSYLVANIA 17101



YOUR ALLIANCE PUBLISHING HOUSE

**BIBLES
BOOKS**

SUNDAY SCHOOL SUPPLIES

VBS MATERIAL

CHURCH FURNITURE AND EQUIPMENT

"Everything for the Church and Sunday School"

We will be happy to send you our catalog and special price lists
if you will send us your name and address for our mailing list.

Our Sponsors

Full Page

Senior Class of St. Paul Bible College
Junior Class of St. Paul Bible College
Sophomore Class of St. Paul Bible College
Freshman Class of St. Paul Bible College
Mr. Orville Carlson, 4355 Hwy #10, St. Paul, Minnesota

Half Page

Central District of the C&MA, 3235 Greenbrier Dr. Barberton, Ohio
Mr. Calvin Garley, 2825 N. Pascal Ave. St. Paul, Minnesota
Security Wholesale Grocery Company, Inc. 321 Grove Street, St. Paul, Minnesota

Quarter Page

Barr's Flower Shop, Snelling at University Ave. St. Paul, Minnesota
Chittenden & Eastman Co. 2402 University Ave. St. Paul, Minnesota
Christian and Missionary Alliance Church, 728 State St. Osage, Iowa
Dixie Cream Donut Company, 918 University Ave. St. Paul, Minnesota
Farmer's and Merchants State Bank, Clarkfield, Minnesota
Kemp Pharmacy, Hanline and Thomas, St. Paul, Minnesota
Midway National Bank, 1578 University Ave. St. Paul, Minnesota
Omaha Gospel Tabernacle, 2006 Douglas St. Omaha, Nebraska
R. H. Novak & Co. 173 E. Robie St. St. Paul, Minnesota
Smith's Texaco Service, 699 N. Snelling Ave. St. Paul, Minnesota

Eighth Page

Cleonsville Laundry, 720 North Hamline, St. Paul, Minnesota
Dom's Shoe Repair, Minnehaha at Hamline, St. Paul, Minnesota
Henry Funeral Home, 536 North Snelling Ave. St. Paul, Minnesota
John's Barber Shop, 1334 Minnehaha Ave. St. Paul, Minnesota
Midway Appliance Service, 1566 Selby Ave. St. Paul, Minnesota
Midway Awning & Shade Co. 518 N. Prior Ave. St. Paul, Minnesota
Mr. C. Eumurian, 2040 Loren Road, St. Paul, Minnesota
Mr. Leonard Carlson, 1671 Hewitt Ave. St. Paul, Minnesota
Mr. R. E. Obst, Pitney-Bowes, Inc. 700 Robert St. St. Paul, Minnesota
Swanson's Paint and Wallpaper, 512 N. Snelling Ave. St. Paul, Minnesota

Our sincere thanks to all these people and organizations who contributed to the production of this yearbook.

1968 Shield Staff

Index — Directory

Abbott, Claudette K. 1333 Edmund. St. Paul, Minnesota. 100
 Abramson, Judith L. 2909 40th Ave. South. Minneapolis, Minnesota 85
 Abramson, Richard D. 2909 40th Ave. South. Minneapolis, Minnesota 39, 53, 91
 Adams, Maria. 302 Grand Ave. Ottumwa, Iowa.
 Adams, William. 1302 Hartford Ave. St. Paul, Minnesota
 Anderson, Dale A. 1696 W. Minnehaha. St. Paul, Minnesota
 Anderson, Larry D. RR #1. Bethel, Minnesota. 21, 49, 100
 Anderson, Lola K. Route 3. Benson, Minnesota. 94
 Anderson, Wayne W. 12 Linden Lane. Landfall Village. St. Paul, Minnesota.
 Arant, Barbara J. 8912 Western Ave. Omaha, Nebraska. 100
 Armstrong, Judith M. 7048 Jersey Ave. North. Minneapolis, Minnesota. 100
 Arnold, Pauline R. 2743 Patria. Winston-Salem, North Carolina. 94
 Aske, Tessi A. 20 Sidney Place SE. Minneapolis, Minnesota.
 Backstrom, Marvin A. Maddock, North Dakota. 38, 63, 85
 Badtke, Bernard D. Route #1, Box 31. Orfordville, Wisconsin.
 Baker, Clyde A. Box 189, Route #1. Sidney, Montana. 91, 92
 Balian, Paulette A. 3211 W. Owasso Blvd. St. Paul, Minnesota.
 Ballagh, Janell S. Burwell, Nebraska. 60, 64, 100
 Barden, Roger W. Route #1. Pardeeville, Wisconsin.
 Bauer, Sharon S. 5908 Alexa. Sylvania, Ohio.
 Baxter, Maureen L. PO Box 151, Huron, Ohio. 57, 94
 Baynes, Paul H. Beulah Beach, Ohio.
 Bedell, Martha. 565 E. Tripp Ave. Peoria, Illinois.
 Bedow, Stephen. Tyler, Minnesota.
 Berndt, Helen M. RD 2, Box 356. Johnston, Pennsylvania. 100
 Bernstrom, Kathleen D. 1724 Carl Street. St. Paul, Minnesota. 94
 Biddle, Joy L. 5132 N. 63rd St. Milwaukee, Wisconsin. 63
 Biggs, Robert L. 7409 Elmira. Des Plaines, Illinois. 29, 54, 85
 Bishop, Patricia L. 1151 Idylwild Drive. Lincoln, Nebraska.
 Black, Charlotte A. 221 Guilford Road. Hoyt Lakes, Minnesota. 100
 Black, Mary L. 221 Guilford Road. Hoyt Lakes, Minnesota. 94
 Blair, Loretta. RR #4, Box 132. Wauseon, Ohio.
 Block, Donald. 1619 Merryview Lane. Hibbing, Minnesota. 48, 49, 100

Blum, Barbara L. Route #3. Mason City, Iowa. 100
 Boese, Faith M. 407 N. 6th Avenue. Upland, California. 64, 94
 Bolstad, Marsha R. Perley, Minnesota. 100
 Bortel, Michael L. 209 Biddle. Bowling Green, Ohio. 28, 85
 Bowell, Susan M. 208 8th Ave. SW. Aberdeen, South Dakota. 101
 Bremner, Robert B. 606 N. Main. Wheaton, Illinois. 94
 Brock, Mary A. RR #2. Gillett, Wisconsin. 101
 Brokopp, John W. 816 N. Albert. St. Paul, Minnesota. 37
 Brown, Barbara L. 1418 Druid Isle Rd. Maitland, Florida. 60, 61, 63
 Brown, Cindy L. RD #3. Huntington, Pennsylvania. 39, 57
 Brown, Fernellyn J. Britt, Iowa. 85
 Brown, Richard W. 1418 Druid Isle Rd. Maitland, Florida. 43, 53, 55, 60, 91
 Buchholz, Ina R. 722 4th St. SW. Watertown, South Dakota. 101
 Buchholz, Ronald R. 3637 Pine Place Rd. Eau Claire, Wisconsin.
 Buchholz, Sandra D. 3637 Pine Place Rd. Eau Claire, Wisconsin. 101
 Bulkley, Dickalon J. Box 428. Tyler, Minnesota. 63, 101
 Bush, Sharon J. Route #8, Box 363. Pensacola, Florida. 63, 101
 Cadmus, Barbara J. RD #6. Wooster, Ohio. 101
 Campbell, Donald N. 3875 Silverwood Drive, Stow, Ohio. 47, 94
 Carlson, Cheryl R. Route #1. Pine River, Minnesota. 94
 Carlson, Janice R. Shafer, Minnesota. 101
 Carlson, Janita J. 1040 Roma Avenue. St. Paul, Minnesota.
 Carr, Ruth M. 3461 Oaklawn Ave. Columbus, Ohio. 101
 Carver, Raymond L. RR #1, Box 43. Salida, Colorado. 13
 Case, James C. Max, Nebraska. 15, 28, 63, 85
 Casperson, Ira M. 820 N. Albert. St. Paul, Minnesota.
 Chapman, John K. 829 Clayland Street. Canton, Ohio. 91
 Christensen, Dianne M. Stanchfield, Minnesota. 101
 Christenson, Ann F. Belgrade, Minnesota. 101
 Christy, Eunice L. 6057 Whiteford Road. Sylvania, Ohio. 95
 Clasen, Janice E. 86 Martin Way. St. Paul, Minnesota. 91
 Conn, Terrel L. 3036 Villa Drive. Toledo, Ohio. 39, 91
 Conner, Susan J. 707 Kittitas. Wenatchee, Washington. 39, 54, 60, 91

Cook, Raymond E. Jr. 717 Fry Street. St. Paul, Minnesota. 28, 85
 Cook, Rose. 717 Fry Street. St. Paul, Minnesota. 30, 85
 Cox, Donna J. Johns Ave. McDonald, Pennsylvania. 64, 85
 Craven, Deborah S. Box 201. Ogden, Iowa. 101
 Craven, Miriam R. Box 201. Ogden, Iowa.
 Crawford, Susan D. 904 E. Smith St. Springfield, Missouri. 63, 95
 Dahl, Janet L. 2116 So. Jefferson. Mason City, Iowa. 63, 101
 Dainsberg, Dean M. 310 19th St. No. Benson, Minnesota. 101
 Daniels, Donald I. Route #2. Hudson, Wisconsin.
 Dean, Neil R. 1396 Thomas Ave. St. Paul, Minnesota.
 Dean, Sheryl E. 1396 Thomas Ave. St. Paul, Minnesota. 85
 DeFor, Stephen A. 981 Thomas Ave. St. Paul, Minnesota. 85
 Dellinger, Frederick. 500 Hellam St. Wrightsville, Pennsylvania.
 Dennis, Bonnie L. 1715 Lynn Drive. Orrville, Ohio. 85
 Dockter, Paul R. 32 Rambleside Drive. Mansfield, Ohio. 101
 Dohrmann, Mary C. Taylor, North Dakota. 22, 39, 60, 85
 Domier, Douglas M. 1917 Logan South. Minneapolis, Minnesota. 91
 Domier, Karen. 1917 Logan South. Minneapolis, Minnesota. 95
 Downey, Lee Roy. Route #2, Box 232-I. Superior, Wisconsin.
 Dresser, Martha J. 401 Ellis. Wheaton, Illinois. 17, 23, 64, 101
 Dunn, Kenneth T. 240 Elk Avenue. Meadville, Pennsylvania. 49, 60, 101
 Eerdman, Marilyn A. Route #1. Cambridge, Minnesota. 95
 Eerdman, Mary B. Route #1. Cambridge, Minnesota.
 Ehresman, Kenneth W. 905 Burlington Ave. Billings, Montana. 15, 24, 47, 54, 95
 Ekelund, Barbara O. Route #1, Box 223. Foxboro, Wisconsin. 101
 Eklof, Sharon A. 1973 Barclay St. St. Paul, Minnesota.
 Eliason, David L. Route #1. Isle, Minnesota. 101
 Epp, Virginia B. 1825 So. 24 Street. Lincoln, Nebraska. 101
 Erickson, Marian J. 2128 Wyoming Ave. Billings, Montana. 63, 95
 Erickson, Vicki L. Drayton, North Dakota. 95
 Esau, Dianne K. Mountain Lake, Minnesota. 61, 63, 95
 Evans, Beverly A. 334 Liberty St. Franklin, Pennsylvania. 91
 Figi, Paul B. 10717 France Ave. So. Minneapolis, Minnesota.

Minnesota.
 Fischer, Donald L. 1346 W. Minnehaha Ave. St. Paul, Minnesota. 86
 Fisher, Gordon O. 101 Williams St. Charles City, Iowa. 101
 Flesner, Bruce R. RR #1. Tracy, Minnesota. 95
 Fluth, David Lee. Route #2. Cambridge, Minnesota. 101
 Fluth, Joyce K. Route #2. Cambridge, Minnesota.
 Folstrom, Rebecca A. 209 E. Ash St. Sisseton, South Dakota. 101
 Foster, Jean J. 1574 Marion. Apt. 104. St. Paul, Minnesota.
 Foster, Robert D. 1574 Marion. Apt. 104. St. Paul, Minnesota. 95
 Franklin, Thomas C. PO Box 205. Maple Plain, Minnesota. 63, 101
 Franz, Gwendolyn. 2115 Reynolds Lane. Louisville, Kentucky. 22, 64
 Freeby, Kenneth B. 1510 8th Ave. So. Anoka, Minnesota. 91
 Fujinaga, Karen M. 3320 Hinano St. Honolulu, Hawaii. 63, 95
 Gade, David L. RR #2. Whittemore, Iowa. 91
 Garwood, Jane K. Amelia, Nebraska. 64, 101
 Gerkovich, Joyce K. 328 6th Ave. So. South St. Paul, Minnesota. 101
 Gettle, Linda M. RR #1. Elberon, Iowa. 55, 91
 Gillick, Richard M. 4677 North 42nd St. Milwaukee, Wisconsin. 101
 Glaim, James A. 2203 Blake Ave. St. Paul, Minnesota.
 Goetsch, Mary A. Box 158, Route #1. Iron River, Wisconsin. 101.
 Goetz, Frances F. Akaska, South Dakota. 101
 Goranson, Stephen J. 711 E. Hawthorne. St. Paul, Minnesota.
 Gorsh, LaVonne J. RR #3, Box 71. Williamsburg, Iowa. 64, 95
 Gorton, Dennis L. 3144 Jupiter Ave. Eau Claire, Wisconsin. 63
 Graff, Diane P. 2177 So. 94th St. West Allis, Wisconsin. 60, 101
 Grandy, David E. Foreston, Minnesota. 17, 101
 Greenberg, Leonard J. Route #2, Anoka, Minnesota. 101
 Greene, Kathryn M. 1637 Van Buren. St. Paul, Minnesota.
 Griggs, Joyce A. 6782 Wirt. Omaha, Nebraska. 96
 Groeneweg, Dale I. RR #2. Balaton, Minnesota. 38, 86
 Grove, Karen E. 1205 Coal St. Pittsburgh, Pennsylvania. 91
 Grythe, Wade L. Route #2. Badger, Minnesota.
 Gustafson, Sharon F. 553 N. 106th St. Wauwatosa, Wisconsin. 38, 86
 Halbersma, Gary E. Browerville, Minnesota. 101
 Hall, Jon W. Webster, Iowa. 102
 Hallin, David R. 3636 26th Ave. So. Minneapolis, Minnesota.

Hatch, Andrew J. 1737 Thomas Ave. St. Paul, Minnesota.

Hayden, Loraine A. 4109 Columbus Ave. So. Minneapolis, Minnesota. 102

Hecker, Daniel W. 988 Hague Ave., Apt. 4. St. Paul, Minnesota. 91

Heckman, Dale H. 4251 N. 60th St. Milwaukee, Wisconsin. 54, 63

Heinrichs, Judith. Wolf Point, Montana. 23, 38, 63

Henke, Elsie. 809 8th Ave. SE. Aberdeen, South Dakota. 102

Henline, Sue E. 7102 Shady Lane. Fort Wayne, Indiana. 102

Henry, Audrey A. 4148 E. 29th. Des Moines, Iowa. 87

Hermann, Richard R. 703 N. Garden St. Lake City, Minnesota. 47

Herrmann, Donald E. RR #2. Greenville, Ohio.

Hildahl, Rodney D. 303 So. 7th St. Montevideo, Minnesota.

Hoffman, Carol D. Route #1. Ashton, Illinois.

Holzkopf, Sharon J. 413 Traube. Westmount, Illinois. 68, 102

Hopkins, Judy J. Rural Route 1. Wilmet, South Dakota.

Hopland, Regina B. Bethel Seminary Apts. St. Paul, Minnesota. 91

Howard, Douglas H. 2697 E. 8th Ave. North St. Paul, Minnesota. 63, 91

Hoy, Darlene C. RR #1. Hinckley, Minnesota. 96

Huber, Jared D. Box 6. Potter, Wisconsin. 102

Hubin, Gary D. Clara City, Minnesota. 43, 51, 96

Huffman, Terry R. Route #7, Box 415. Pensacola, Florida. 96

Humphrey, Thomas B. Box 884. Fairbanks, Alaska. 96

Hunsicker, Linda J. RD #2, Box 518. Greene, New York. 102

Hunter, Ilene D. Route #1. Boone, Iowa. 87

Hustad, Arnold L. Box 478. Hiawatha, Iowa. 91

Ireland, James S. 3729 Northern Pike, Monroeville, Pennsylvania. 102

Irvin, Judy L. 1209 Getz Road. Fort Wayne, Indiana.

Jacobs, Dean A. 4367 Unity Ave. No. Robbinsdale, Minnesota. 96

Jacot, Carol D. Box 8. Swanville, Minnesota.

Jaques, Lois M. 269 A Street. Milwaukie, Oregon. 13, 63

Jashinske, Arlene. 5231 W. Howard Ave. Milwaukee, Wisconsin. 64, 96

Jashinske, Ricky B. 5231 W. Howard Ave. Milwaukee, Wisconsin. 87

Jeanneret, Elizabeth. RD #1. Orrville, Ohio. 87

Jensen, Diane L. Tyler, Minnesota. 26, 87

Jensen, Steven L. Tyler, Minnesota. 102

Johnson, Beverly A. 319 N. 31st. Billings, Montana. 96

Johnson, George R. Box 182. Chetek, Wisconsin. 96

Johnson, Judith M. 528 Fourth Ave. Sibley, Iowa. 96

Johnson, Kimit. Morris-Thomas Rd. Duluth, Minne-

sota. 87

Johnson, Linda L. RR #2. Paynesville, Minnesota. 102

Johnson, Nelda L. 1437 W. Minnehaha Ave. St. Paul, Minnesota.

Johnson, Paul D. 1437 W. Minnehaha Ave. St. Paul, Minnesota.

Johnson, Roger L. 5802 McKinley. Omaha, Nebraska. 102

Johnson, Ruth A. 5802 McKinley. Omaha, Nebraska. 102

Johnson, Steven P. RR #1, Box 93. Warren, Minnesota. 91

Johnson, William J. Route #1, Box 287. Escanaba, Michigan.

Jones, James M. 3704 Boardman. Minneapolis, Minnesota.

Jueckstock, Richard. 5525 Hartman. Omaha, Nebraska.

Justice, Robert. RR #1. Marion, Iowa.

Kallem, Bob J. 1361 Englewood Ave. St. Paul, Minnesota. 91

Kanneman, Susan J. 4926 Haddon Rd. Toledo, Ohio. 21, 91

Keller, Paul R. Shell Lake, Wisconsin.

Keller, Wesley C. Route #1, Box 41a. Superior, Wisconsin. 96

Kelm, Joyce A. Route #4. Janesville, Wisconsin. 13, 20, 30, 44, 45, 63, 102

Kelm, Marilyn J. Route #4. Janesville, Wisconsin. 87

Kern, Terry R. Hannah, North Dakota. 102

King, Carol. 241 7th Ave. SE. Osseo, Minnesota. 102

Klanderma, Joel D. 1813 So. Willkie St. Appleton, Wisconsin. 63, 96

Kleinendorst, Sharon J. 1119 Dayton Ave. St. Paul, Minnesota. 96

Koland, Diane F. East Star Route. Sandstone, Minnesota. 96

Kondracki, Linda. 1126 S. Layton Blvd. Milwaukee, Wisconsin. 97

Koroly, James P. 3411 19th. Wyandotte, Michigan. 60

Kremenak, Patricia A. PO Box 204. Clutier, Iowa. 64, 97

Kuehne, Bonita R. Route #1, Box 207. Burtrum, Minnesota. 102

Kurrasch, Joy A. 774 Aldine. St. Paul, Minnesota. 45

Landaw, Harry F. 383 W. North. Wooster, Ohio. 49, 103

Lapp, Lynda R. 224 Forest Drive. Kalispell, Montana. 103

Larson, Rebecca J. 344 Juniper Ave. St. Paul Park, Minnesota. 64, 103

Larson, Romaine C. C&MA Sentani Airstrip. Sukarnapura, West Irian, Indonesia. 54, 103

LaTourelle, Mary M. Bena, Minnesota. 103

Lawrence, David E. 1113 Eighth St. Port Huron, Michigan. 97

League, Pamela J. Stratton, Nebraska. 63, 97

LeCompte, Linda J. 25505 Farmbrook, Southfield, Michigan. 103

Lenox, Carolyn R. RR #1. Dixon, Illinois. 103

Lightbody, Warren. 103 Bates Ave. St. Paul, Minnesota. 26, 63, 91

Lohman, John R. 4949 N. 76th St. Milwaukee, Wisconsin. 18, 50, 97

Lord, Grace E. 221 South 6th St. New Castle, Indiana. 60, 64, 87

Lorenson, Sheldon L. Strathcona, Minnesota.

Lorenzen, James G. 3210 Girard Ave. So. Minneapolis, Minnesota.

Losli, Ruth A. 1169 Reed St. Green Bay, Wisconsin. 92

Lowe, Walter K. Box 121. Apple Creek, Ohio. 49, 103

Lund, Pauline. 235 E. 7th St. St. Paul, Minnesota. 103

Lundstedt, Mark D. Route #2. Stanton, Iowa. 92

Lynn, Rebecca. 8 West St., Diamond Hill. Kowloon, Hong Kong. 88

Magee, Keith E. 1029 Front Street, Apt. 2. St. Paul, Minnesota.

Mallery, Robert. Route #1-B. Columbia Falls, Montana.

Mallow, Cheryl L. 9892 Old State Rd. Chardon, Ohio. 13, 103

Mansfield, Barbara L. Box 111. East Liverpool, Ohio. 97

Manske, Carol A. 1654 Van Buren. St. Paul, Minnesota. 54, 92

Manske, Georgia L. 821 No. 56. Lincoln, Nebraska. 97

Mapstone, Sandra L. 883 Sims Ave. St. Paul, Minnesota. 103

Marcinek, Norma J. 3326 Boyd Street. Omaha, Nebraska. 103

Martin, Darlene R. 621 Fairview. Missoula, Montana. 54, 88

Matson, Pearl A. Route #2. Clear Lake, Wisc. 97

Mattson, Ruth I. Loomis, Nebraska.

McClain, Kathleen E. 6830 W. Lincoln Ave. West Allis, Wisconsin. 64, 103

McDonald, Denise L. 323 E. Square Lake Road. Troy, Michigan. 97

McGarvey, Susan. 319 E. Maple. Ottumwa, Iowa. 64, 103

McGarvey, Ruth E. 5893 Kline Road. Niagara Falls, New York.

McKenzie, Cheryl C. 2068 Suburban Ave. St. Paul, Minnesota. 64, 103

McMahan, Lynn M. 3190 E. Dodge Road. Clio, Michigan. 88

McMahan, Sharon B. 3190 E. Dodge Road. Clio, Michigan. 103

McNeeley, Elizabeth E. 913 N. Cass. Wabash, Indiana. 64

Medin, James G. 1407 Hewitt Ave. St. Paul, Minnesota. 28, 39, 88

Medin, Willa Jo. 1407 Hewitt Ave. St. Paul, Minnesota. 103

Merrill, Karen N. 806 Holly Ave. St. Paul, Minnesota. 63, 91

Merrill, Lois E. 118 Vine. Clarksville, Iowa. 63, 97

Merrill, Timothy F. Osseo, Minnesota.

Mettler, Kenneth G. Route #3. Amery, Wisconsin.

Meyers, David C. 3533 Longfellow. Minneapolis, Minnesota.

Miller, Marilyn E. Route #1, Box 19. Paynesville, Minnesota. 103

Mills, Katherine M. Route #1, Box 437. Forest Lake, Minnesota.

Milner, Leslie M. 1607 Hubbard Ave. St. Paul, Minnesota.

Monk, Linda K. Route #1, Box 162. Plover, Wisconsin.

Morey, Larry D. 816 Cummins Road. Des Moines, Iowa.

Morgan, John P. 2224 Spear St. Logansport, Indiana. 103

Morris, Larry D. 1707 Mangum St. Winston-Salem, North Carolina. 42, 49, 103

Mowery, John P. 510 S. Wayne St. Danville, Indiana. 54, 103

Murphy, Kathleen D. 1001 Jefferson St. Anoka, Minnesota.

Murphy, Yvonne E. 3962 Cannon Road. Youngstown, Ohio. 92

Murrock, Gerald G. 154 W. Alluton Ave. Milwaukee, Wisconsin.

Myers, Larry W. 2678 W. Hardies Rd. Gibsonia, Pennsylvania. 92

Narwold, Bonnie K. 1533 So. 74th St. West Allis, Wisconsin. 60, 64, 103

Neal, Robert L. Route #2. Ionia, Iowa. 103

Nefzger, Claryce A. Wolf Point, Montana.

Nelson, Donald C. Clarkfield, Minnesota. 97

Nelson, Shirley R. Clarkfield, Minnesota.

Newman, Joseph A. 3635 Knox Butte Rd. Albany, Oregon. 51, 54, 60, 97

Newman, Michael D. 3635 Knox Butte Rd. Albany, Oregon. 50, 43, 103

Newsom, Daniel R. 1444 Oak Grove Rd. Decatur, Georgia. 18, 54, 104

Newton, Monty R. Route #1. Ogden, Iowa.

Nicholson, Daniel R. Route #2, Box 3. Wadena, Minnesota.

Noll, Daniel L. 6813 N. 87th Place. Scottsdale, Arizona. 38

Norton, Shirley L. 23 So. 133 Ave. W. Duluth, Minnesota. 104

Nussbaum, Paula H. 236 W. Main St. Dalton, Ohio. 104

Nylin, Michael L. Route #2. Annandale, Minnesota. 43, 49, 104

O'Brien, David E. 3636 Morgan Ave. No. Minneapolis, Minnesota. 88

Ogg, Sharon A. 10550 Hanson Blvd. Coon Rapids, Minnesota. 104

Olsen, Linda R. Sour Springs Road. Basom, New York. 92

Olsen, Roger W. 908 Grand. St. Paul, Minnesota. 52

Olson, Bruce G. 3033 Chase Dr. Minnetonka, Minnesota. 104

Olson, Sandra L. Route #4. Viroqua, Wisconsin. 63, 104

Opp, Arlene I. 423 Fry Street. St. Paul, Minnesota.

Opp, Myrna. 1309 Hewitt Ave. St. Paul, Minnesota.

Oswalt, Patricia L. 9940 Maysville Rd. Fort Wayne, Indiana. 29, 30, 39, 60, 88

Oyen, Douglas A. 4906 Lyndale Ave. So. Minneapolis, Minnesota. 97

Parker, Marvin T. 4518 - 282nd. Toledo, Ohio. 88

Parks, Norman K. 8789 Billings Rd. Willoughby, Ohio. 63

Pata, Judith L. 1820 Idlewood Ave. East Cleveland, Ohio. 31, 38, 88

Patzen, Karleen D. 4910 N. 56th St. Milwaukee, Wisconsin. 97

Paul, Mary S. 6821 N. Ottawa Ave. Chicago, Illinois. 63, 104

Payne, Bonnie L. 2189 Devonshire. Bloomfield Hills, Michigan. 97

Peace, Earl W. Box 163 B. RD #1. Lewistown, Pennsylvania. 97

Pearson, Leonard A. Route #1, Box 217. Superior, Wisconsin. 63

Peevyhouse, Harold W. 1472 Lamore Dr. San Jose, California. 92

Peters, Timothy B. Box 218. Walworth, Wisconsin.

Peterson, Marjorie A. 3961 Rose Rd. Duluth, Minnesota. 104

Peterson, Roxanne K. 23 W. 48th St. Minneapolis, Minnesota. 63, 104

Pfundheller, Sharon. RR #2, Box 149-A. Shell Lake, Wisconsin.

Phillips, Elizabeth A. 2651 Burton Rd. Ann Arbor, Michigan. 104

Pillard, DuWayne L. Princeton, Nebraska.

Pope, Sheila L. 384 Brandon. Glen Ellyn, Illinois.

Porter, Rick D. 5025 So. 82nd St. Ralston, Nebraska. 43, 53, 60, 63, 104

Porter, Ronald C. Route #1. Foreston, Minnesota. 104

Post, Eugene C. 1242 Reaney Ave. St. Paul, Minnesota.

Pugh, Rebecca A. 2421 So. 49th St. Omaha, Nebraska. 60, 63, 97

Puzia, Sandra J. 1202 Layton Ave. Milwaukee, Wisconsin. 63, 97

Raebel, Janet L. 1605 So. 88th St. West Allis, Wisconsin. 18, 19, 97

Ramsey, Jon M. 3727 21st Ave. So. Minneapolis, Minnesota. 98

Raney, Emmagene F. Drayton, North Dakota. 31, 38, 60, 88

Raudenbush, Paul G. 2405 Oak St. White Bear Lake, Minnesota. 31, 49

Ray, Lee E. 879 No. Pascal. St. Paul, Minnesota. 92

Reed, Douglas W. 915 Park St. Anoka, Minnesota. 98

Reese, Roy Charles. Box 153. Martinsville, Ohio. 23,

60, 104

Reibling, Roger H. 1471 Wynne. St. Paul, Minnesota. 43, 92

Reigel, Linda L. 804 Hemlock. Marshfield, Wisconsin. 44, 45, 104

Richter, Betty G. Clarkfield, Minnesota. 98

Rightler, Barbara L. Route #1. Tracy, Minnesota. 88

Rightler, James D. 155 So. Kenwood. Royal Oak, Michigan. 38, 88

Robinson, Jeanne M. 528 Perry. Titusville, Pennsylvania.

Romin, Linda R. 1794 Cora St. Des Plaines, Illinois. 37, 44, 60, 98

Ronzheimer, Dorothy. 335 Oaklawn. Elmhurst, Illinois. 21, 45, 60, 64, 92

Ronzheimer, Philip P. 345 Elm. Elmhurst, Illinois. 13, 14, 39, 47

Roscoe, Marian L. Route #1. Sandstone, Minnesota. 98

Rott, Krista Y. 718-4th Ave. SW. Jamestown, North Dakota. 104

Rurup, Darren L. 326 S. Hudson. Westmont, Illinois. 92

Russell, Gary E. RR #3. New Sharon, Iowa.

Russell, Kae W. 955 So. 68th St. Omaha, Nebraska. 60, 63, 95

Ryther, Virginia. Route #2. Anoka, Minnesota. 104

Sahlberg, David G. 1376 Pine St. Clearwater, Florida. 104

St. Cyr, Shirlee R. 4600 Lake Road. Robbinsdale, Minnesota. 104

St. John, Donald 5966 Grand Haven Rd. Muskegon, Michigan. 60, 63, 98

Sandell, Clifford A. 2491 Williamswood Ct. Decatur, Georgia. 43, 49

Sawyer, Alyce A. PO Box 1866. Orlando, Florida. 98

Schaefer, Dennis W. 1633 Laurel. St. Paul, Minnesota.

Scherrer, Judith A. 5722-64th Place. Riverdale, Maryland. 64, 104

Schleh, Esther. 183 McLean Dr. Manassas, Virginia. 98

Schmidt, Betty F. 312-4th Ave. No. Jamestown, North Dakota. 63, 104

Schmidt, Gwendolyn K. 1623 Highway 41. Sturtevant, Wisconsin. 89

Schuppman, Bonnie L. Box 336. Sandstone, Minnesota. 64, 98

Scott, Rosemarie. Dunlap Route, Box 54. Hemmingford, Nebraska. 89

Sears, Dennis. Route #1, Box 156. Superior, Wisconsin. 47, 104

Seeger, Ronald D. 220 Glenview. Elmhurst, Illinois.

Seiler, Gordon H. 1256 Vinewood. Wyandotte, Michigan. 29, 43, 54, 62, 63, 89

Setterberg, Karen. RR #2, Box 85. Slayton, Minnesota. 89

Setterlof, Carol J. 5732 Brunswick Ave. No. Minneapolis, Minnesota. 63

Severson, Kenneth A. Taylor, North Dakota. 63

Showell, Betty J. 5159 E. 76th Crt. Indianapolis, Indiana. 28

Showell, Gayle E. 1189 Cragmer Rd. Colorado Springs, Colorado. 98

Showell, Glen E. 907 Charlotte. St. Paul, Minnesota. 28

Skifstad, Marlin. 1657 Hewitt. St. Paul, Minnesota. 29, 89

Slater, Maxine J. 530-5th St. SE. Milaca, Minnesota. 98

Sloan, William J. 483 W. Lynnhurst Ave. St. Paul, Minnesota. 104

Slocum, Theresa A. 8 Billings Rd. Apalachian, New York. 98

Smith, Darrell J. 696 Grand Ave. St. Paul, Minnesota. 89

Smith, Terrance. 328 Lexington, Apt. 8. St. Paul, Minnesota. 104

Sneary, Nancy L. RR #4. Greenville, Ohio. 98

Soderberg, Constance E. 4425 N. 63rd St. Milwaukee, Wisconsin. 104

Soderholm, Julieanne. 1056 Churchill. St. Paul, Minnesota. 89

Soderholm, Sidney L. 1056 Churchill. St. Paul, Minnesota.

Sorenson, Linda N. RR #1. Perley, Minnesota.

Sorenson, Nancy. RR #1. Perley, Minnesota.

Spader, Connie J. RR #3. Lincoln, Nebraska. 98

Spader, Joyce L. Box 205. Waverly, Nebraska. 22, 63, 93

Spader, Larry L. Waverly, Nebraska. 54, 98

Spaulding, Leigh Ann. RR #1. Abrams, Wisconsin. 64, 89

Stein, Dwight D. 537 Wakeman Ave. Wheaton, Illinois. 105

Stensgaard, Patricia. Ruthton, Minnesota. 64, 98

Stoldt, Bradley S. 5 Parson St. Norwalk, Ohio. 63, 105

Stombaugh, Eileen F. 1800 Stillwater Ave. St. Paul, Minnesota. 12, 105

Strawser, Craig. 2624 E. 16th Ave. Hibbing, Minnesota. 105

Strawser, Linda. 1742 Merryview Lane. Hibbing, Minnesota. 20, 63, 105

Strobel, Marjorie. Box 266. Richey, Montana. 98

Strohl, Gregory R. 1614 Malasia Rd. Akron, Ohio. 43

Stubbs, Dawn M. Route #1, Box 508-U. Long Lake, Minnesota.

Stumbo, Gloria J. 1191 Lafond Ave. St. Paul, Minnesota.

Stumbo, Kenneth J. 1191 Lafond Ave. St. Paul, Minnesota. 49

Stumbo, Lance E. RR #1. Ogden, Iowa. 51, 52, 53

Stumbo, Milo Dennis. 1853 Reaney Ave. St. Paul, Minnesota.

Stumbo, Stephen C. 1307 "D" Ave. NE. Cedar Rapids, Iowa. 105

Stumbo, Terrance. RR #1. Ogden, Iowa. 18, 19, 54, 93

Swanner, Peggy A. 2121 Reaney Ave. St. Paul, Min-

nesota.

Swanson, Lynn H. 3700 Englewood Ave. So. St. Louis Park, Minnesota.

Swanson, Robert L. Chambers, Nebraska. 24, 51, 52, 53, 63, 98

Taffin, Linda K. 801 - 3rd St. NE. Fosston, Minnesota. 45, 98

Tallman, Donna. 25 S. Alexander. Danville, Illinois. 20, 105

Tanner, Bruce A. Clayton, Wisconsin.

Taylor, Margaret A. 105 Theron St. Johnson City, New York. 93

Thomas, Linda A. 168 Woodlawn Ave. NW. Canton, Ohio. 60, 98

Thomas, Susan M. 3342 W. 134th St. Hawthorne, California. 105

Thompson, Bonnie M. 3319 Humboldt Ave. Minneapolis, Minnesota.

Toavs, Garry. 224 Forest Dr. Dalispell, Montana.

Toavs, Lela. 1319 Hewitt Ave. St. Paul, Minnesota.

Toavs, Michael, St. Ignatius, Montana. 105

Toren, Robert. 1472 Larpenteur Ave. St. Paul, Minnesota.

Tyler, Paul K. 1457 Englewood Ave. St. Paul, Minnesota. 63, 93

Unger, Evonne S. 29-120, Box 48. Fraser, Montana. 64, 105

Vanaugh, Ernest D. 1745 Overlook Ave. Youngstown, Ohio.

Van Langen, Michael. Kamrar, Iowa. 38, 89

Vannett, Willard E. Box 188. Big Lake, Minnesota.

Victoreen, Carol J. 5520 Swift Ave. Cudahy, Wisconsin. 105

Wagoner, Wanetta S. 323 E. Seminary. Hoopeston, Illinois. 93

Walden, Jimmy D. 3419 Breacrest. Houston, Texas.

Walker, John E. Culbertson, Nebraska. 54

Wall, James D. RR #1. Smithville, Ohio.

Wallis, Kenneth M. Route #1. Harrison, Arkansas. 46, 47, 63, 105

Warner, Judith A. 303 Ranowsky Court. East Canton, Ohio. 64, 105

Weidman, Robert D. 618 S. Ottawa. Dixon, Illinois. 14, 15, 47, 89

Weigelt, Darlene A. Clarkfield, Minnesota. 105

Welbourn, Jessie A. 420 Torrey St. Brockton, Massachusetts. 105

Welsh, Brenda Joy. 906 Barnhart Ct. Zion, Illinois. 105

Wemer, Sandra K. 1418 Chester. Ottumwa, Iowa. 105

Westbrook, Mary A. 3056 So. 34th St. Omaha, Nebraska. 89

White, James W. Fleming Route. Aitkin, Minnesota. 63, 105

Wible, Sherril. 529 W. Packard Ave. Fort Wayne, Indiana. 105

Widfeldt, Joyce E. 1400 W. 88th St., Apt. 302. Bloomington, Minnesota. 99

Wiens, Donald. Mountain Lake, Minnesota.

Wiggins, Donald A. 3330 19th. Wyandotte, Michigan. 37, 54, 60, 63, 99
 Wilhelmsson, Lars. 1187 Selby Ave. St. Paul, Minnesota. 93
 Wilhelmsson, Nancy. 1187 Selby Ave. St. Paul, Minnesota. 99
 Williams, Dwight S. 8350 Fremont Ave. So. Apt. 302. Bloomington, Minnesota. 63, 105
 Williams, Sue. 912 Inverness. Lisle, Illinois.
 Wilkins, Sharon E. Route #1, Box 182. Foreston, Minnesota. 89
 Winkelman, Daniel J. 417 E. Cook St. Portage, Wisconsin. 99
 Witham, John C. 1860 Portland Ave. St. Paul, Minnesota.
 Wolcott, Kelly C. Arlee, Montana.
 Wood, Charles B. 962 County Rd. B2. St. Paul, Minnesota.
 Worrell, Jo Ellen. RR #1, Box 246. Clayton, Indiana.

63, 93
 Wright, Gayle. 6213 Mansfield Dr. Greendale, Wisconsin. 105
 Wright, Frances M. 1377 N. Prospect. Ypsilanti, Michigan. 89
 Yeagle, Linda S. 2200 W. Van Buren St. Phoenix, Arizona.
 Young, Colleen A. #2 Moorgate Place. Calgary, Alberta, Canada. 39
 Younkin, Martha A. 421 Reidmore Rd. So. Connellsville, Pennsylvania. 89
 Ysker, Lois M. 1431 Englewood, St. Paul, Minnesota.
 Ziebarth, Damaris D. 5350 Perry Circle. Minneapolis, Minnesota.
 Zopfi, Lydia J. 718-111th Ave. NE. Minneapolis, Minnesota.
 Zweifel, Linda K. 75 So. Lexington Dr. Janesville, Wisconsin. 63, 105

Faculty — Staff

Alexander, Donald. 1317 Englewood. St. Paul.
 Allwine, Janet. 2180 Haddington Road. Roseville.
 Bergman, Theodore. 5400 Clinton Ave. Minneapolis.
 Brokopp, Faith. 816 N. Albert. St. Paul.
 Brown, Lucille. 1007 Tiller Lane. St. Paul.
 Brundin, Harold. 3131 Park Ave. Minneapolis.
 Cahow, Junice. 764 North Hamline. St. Paul.
 Conley, William. 1007 Charles Ave. St. Paul.
 Cook, Helen A. 2599 Lexington No. St. Paul.
 Cook, Raymond E. 2599 Lexington No. St. Paul.
 Davis, Ronald. 1361 Englewood. St. Paul.
 Dincau, Elaine. 100 W. Iowa, Apt. 8. North St. Paul.
 Dean, Carolyn. 2682 Virginia. St. Paul.
 Eastman, Martin. 2172 N. 6th. North St. Paul.
 Fardig, Ruth. 2277 Carter Avenue. St. Paul.
 Ferry, Russell F. 2749 North Griggs. St. Paul.
 Gates, John F. 1387 Englewood. St. Paul.
 Hackney, Kay. 816 N. Albert. St. Paul.
 Hahn, Robert. 1221 W. Co. Rd. B. St. Paul.
 Hanaford, Susan. 1125 W. Roselawn. St. Paul.
 Hardwick, Harry T. 1760 Hewitt. St. Paul.
 Hardwick, Thomas D. 1785 Emerson Ave. So. Minneapolis.
 Hindmand, Claudine. 806 North Albert. St. Paul.
 Jensen, Diane. 1619 Hubbard. St. Paul.
 Kallem, Shirley. 1361 Englewood. St. Paul.
 Lapp, Doris. 820 North Albert. St. Paul.

Larson, Stanley. 875 North Hamline. St. Paul.
 Mason, James. 1664 Taylor. St. Paul.
 Miller, Viron O. 1317 Englewood. St. Paul.
 Nelson, Sidney. Route #1, Box 58. Cambridge.
 Pervier, Alyce. 824 N. Albert. St. Paul.
 Pierce, Bud. 7148 Newton Ave. Minneapolis.
 Reich, Estella. 1346 West Minnehaha. St. Paul.
 Richardson, Stanton. 783 North Albert. St. Paul.
 Robinson, Jean. 6279 5th NE. Fridley.
 Schaefer, Carrolle. 824 North Albert. St. Paul.
 Schweizer, Ray. 2936 46th Ave. S. Minneapolis.
 Shepson, Charles. 1029 Cobb Road. St. Paul.
 Smid, Marcelyn. 806 North Albert. St. Paul.
 Staley, Frances. 806 North Albert. St. Paul.
 Stoesz, Esther. 806 North Albert. St. Paul.
 Tanner, Merton. 779 North Albert. St. Paul.
 Teeter, Edna. 806 North Albert. St. Paul.
 Tewinkel, Joseph. 1497 Larpenteur E. St. Paul.
 Thompson, George. 3319 Humboldt S. Minneapolis.
 Thompson, Marvin. 1463 W. Minnehaha. St. Paul.
 Treece, James. 1809 East 41st St. Minneapolis.
 Trouten, Donald. 277 Ridgecrest Ave. St. Paul.
 Van Wagner, Benjamin. 1826 North Agate. St. Paul.
 Voth, Peter. 382 Pierce, Apt. 1. St. Paul.
 Weldin, Marilyn. 807 Cannon. St. Paul.
 West, Judith. 319 Larpenteur. St. Paul.
 Zopfi, Brownie. 718 111th Ave. NE. Minneapolis.