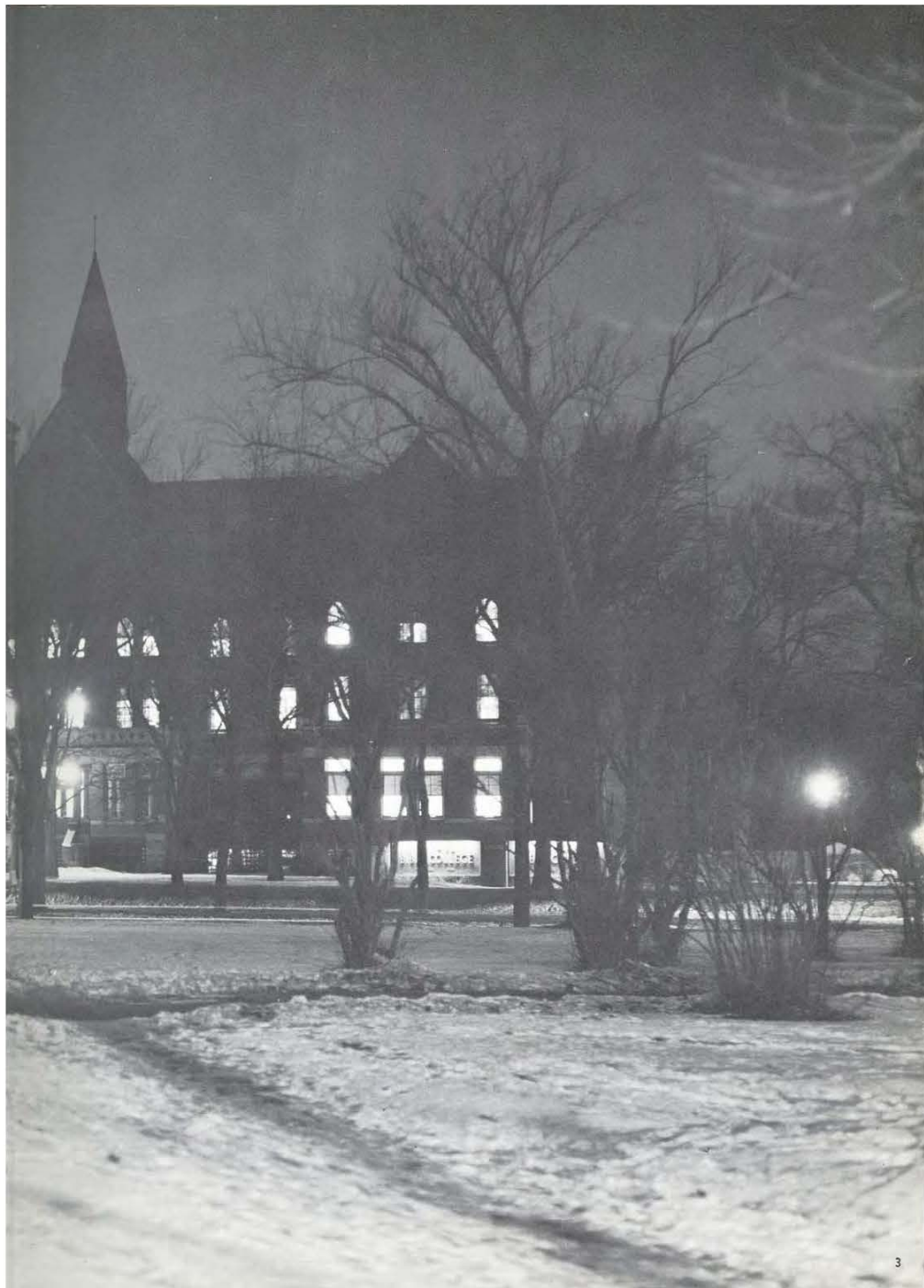
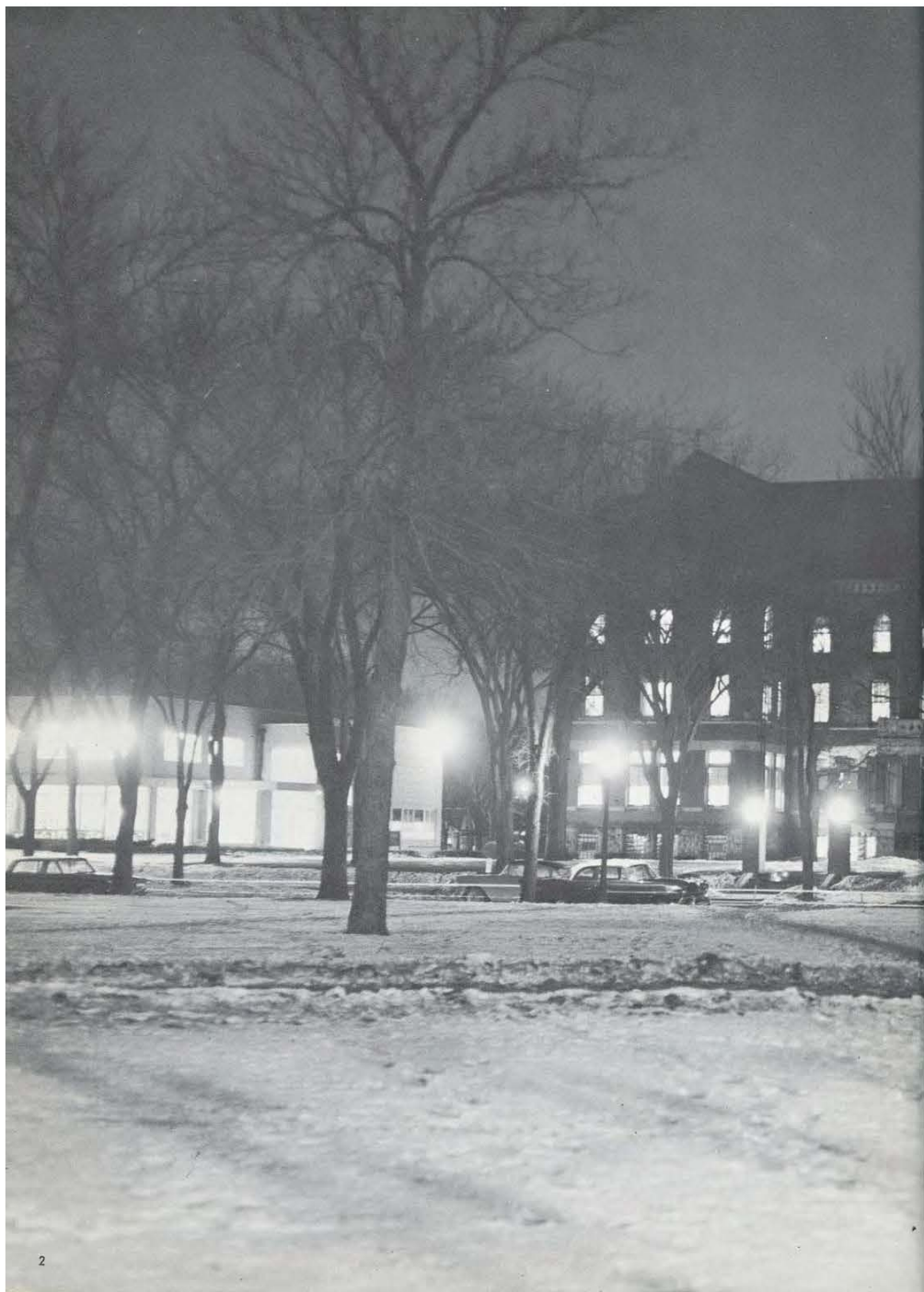
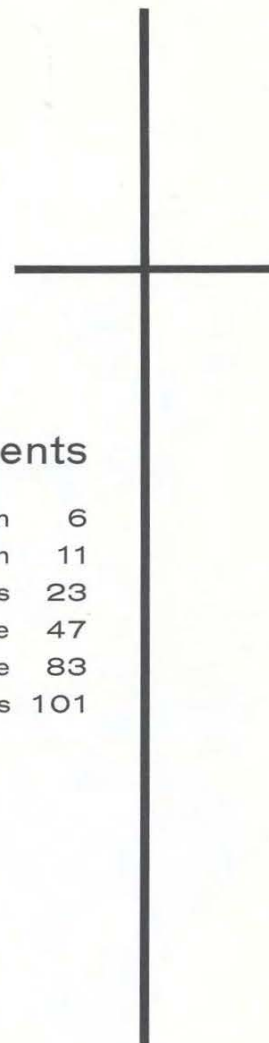


St. Paul Bible College
St. Paul, Minnesota
Volume XXV

Editor: JOANN KILLICH
Business Manager: GARY BORG





Contents

Dedication	6
Administration	11
Classes	23
Campus Life	47
College Service	83
Advertisers	101

"One with the Saviour . . . Even as He."



*"How beautiful upon the mountains are
the feet of him that bringeth good tidings,
that publisheth peace . . ." Isaiah 52:7*

WE DEDICATE:

To you missionaries who have gone from the St. Paul Bible College with the Gospel of Salvation this 1963 Shield.

Jesus proclaimed the Message of Life to those who had never heard. His very life radiated his Missionary Missions commitment. So from the hallowed halls of this college you have gone desirous to be "Even as He" in this respect.

The compulsion of the Cross has thrust you forth to labor diligently in His Vineyard. You face many of the difficulties that Jesus and His disciples faced. The task of bringing those of heathen lands into contact with Christ as their King has become your very life.

It is to you who have heeded the command "Go ye into all the World and Preach the Gospel" that we proudly pay tribute with this book.



WE HONOR:

Reverend Joseph C. Wenninger

Saint Paul's loss will become Simpson Bible College's gain when on July 31, 1963 our beloved Dean Wenninger leaves to become President of our sister school in San Francisco, California. So heartwarmingly vital has been his ministry among us, that it is difficult for us to conceive of Saint Paul Bible College apart from Mr. Wenninger. In every area of activity, students and staff alike have found, in the cordial atmosphere of his office, a man willing to take time to listen and to offer encouragement and help, in spite of the fact that as Vice-President and Academic Dean he carried a double load of responsibility.

His efforts on behalf of our school far exceeded the call of duty; yet no individual found him unconcerned or unwilling to help with a personal problem. Sympathetic understanding, spiritual wisdom and common sense characterized his counseling. His active concern for the spiritual and academic welfare of our school motivated his ministry here in a way that has produced fruit that will long remain, and he leaves in the hearts of his students and colleagues pleasant and profitable memories of our association with him.

Though we shall surely miss him here, it is our sincere wish that our Lord will abundantly bless and use him in his future ministry.



Administration

Faculty 16
Staff 18

*"One in the sorrows He bore,
One in His service so true,
Even His tears I may share,
Even His Works I may do."*



By the splendid medium of the *Shield* it is my joy to congratulate the graduating class of 1963. The long awaited day of graduation is almost here. The cap and gown, the procession, the suspense of walking across the platform, the moment of reaching to receive the diploma that had seemed far away for so long—the sudden realization that this is it—all combine to give an unforgettable sensation of achievement.

The chosen theme "Even as He" is most appropriate in this the 75th anniversary celebration period of the Christian and Missionary Alliance in which we share. Our founder Dr. A. B. Simpson, directed his life and ministry toward this lofty level of living and testified to it when he wrote with joyful heart the song we sing.

"Oh what a wonderful place Jesus has given to me!
 Saved by His glorious grace, I may be even as He.
 When with my Lord I appear, like Him I know I shall be;
 But while I walk with Him here, I may be even as he."

No truth could be more inspiring, no purpose more promising; no pursuit more all-pervading;
 no experience more satisfying—no realization more glorious!

Harry Hardwick
 Harry T. Hardwick
 President



Back row, left to right: Rev. Vernon E. Gowdy, Rev. James Davey, Rev. James T. Cunningham, Mr. Herbert Simmons, Rev. Lester Kim, Mr. John Polivka.
 Front row: Mr. Charles Eumurian, Rev. Carl Volstad, Dr. Harry Hardwick, Mr. Stewart Elmslie.

Rev. Carl Volstad, District Superintendent, Board chairman.



Rev. Leo Berreth, Assistant District Superintendent.



College Board



JOSEPH C. WENNIGER, JR., B.A., M.A.
Vice-President
Dean of Education



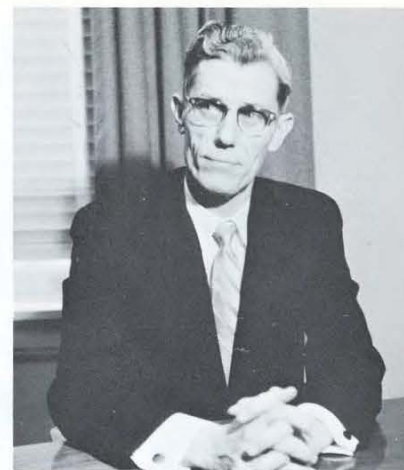
CHARLES W. SHEPSON, B.S.
Dean of Students



FRANCES D. DECKER, B.E.
Associate Dean of Students



MERTON W. TANNER, B.A., M.A., B.D., Th.M.
Registrar



VIRON O. MILLER
Treasurer and Business Manager



CHRISTIAN C. HAINLEN
Director of Public Relations



VIOLA BJORHOLM, B.A., M.A.
Professor of English



LUCILLE M. BROWN, B.S., M.M.
Assistant Chairman, Department of Music,
Associate Professor of Music

Faculty



HAROLD T. BRUNDIN, B.M.
Professor of Voice



WILLIAM W. CONLEY, B.S.
Acting Chairman, Missions Department



JAMES P. DAVIES, B.A., M.M.
Chairman, Music Department,
Professor of Music



JOHN F. GATES, Th.B., B.D., Th.M.,
S.T.D.
Acting Chairman, Philosophy Department



CAROLYN M. GREENE, B.A., M.A.
Associate Professor of Speech and English

Faculty



GORDON P. HOWELL, B.M., M.M.,
Ph.D.
Associate Professor of Music



JANET LUDWIGSON, B.M.
Instructor of Piano and Organ



JAMES R. MASON, B.A., B.D.
Acting Chairman, Bible and Theology
Department, Instructor in Bible



RICHARD OLSON, B.A., B.D.
Instructor in Natural Science and History



STANTON W. RICHARDSON, B.S., M.A.
Director of Counseling, Professor of
Bible and Theology



JOSEPH M. TEWINKEL, B.A., Th.B.,
B.D.
Acting Chairman, History Department,
Assistant Professor of Bible and History



DONALD J. TROUTEN, Th.B., M.A.
Chairman, Department of Christian Education

Staff

Anita Henkaline
Secretary to Vice-President and
Academic Dean



Carole Schaefer and Frances Staley
Secretaries to Treasurer



Seated: Mary Kurrasch, Secretary to President
Standing: Gloria Vernon, Secretary of Public
Relations



Shirley Elwood and Estella Reich
Secretaries to Registrar



Irene Werner
Secretary of Music Department



Darlene Brown
Secretary to Christian Service



June Smith
Secretary to District Superintendent

Staff



Seated: Addie B. Raines, Librarian
Standing: Carol Pennington, Assistant Librarian

Staff

Carol Schock
Receptionist and Head Switchboard Operator



Viola Wangen
College Nurse



Edna Teeter and Audrey Cornforth
Bookstore Manager and Assistant

Staff

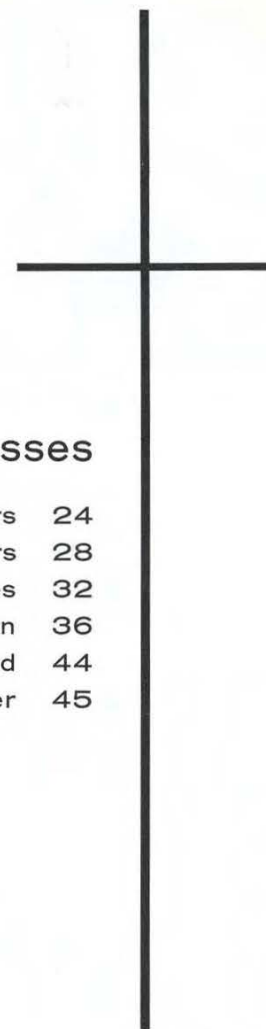


Mina Maxwell, Hostess and Housekeeper

Esther Stoesz and Athrea Hedrick, Assistant Cooks;
Gladys Zuaderer, Head Cook



Robert Hahn and Marvin Eastman
Superintendent of Buildings and Grounds and Assistant



Classes

Seniors	24
Juniors	28
Sophomores	32
Freshmen	36
Unclassified	44
Second Semester	45

*"One in His merits I stand,
One as I pray in His name;
All that His worth can command,
I can with confidence claim."*



Seated: Senior Class Advisor, Rev. Charles Shepson. Standing: Senior Class President, Ron Davis.

Seniors

A quick glance back at four fleeting years is all you have time for. The times of fun, of study, and of Christian fellowship will in the years to come be unwritten memories for you to return to.

The wide, unfolding picture of the future holds you spellbound as you gaze at it. As you move into this scene the realization of its greatness grips you. There is so much more to learn and understand while the meaning of past hours of study are at last made clear.

With many vague anticipations you are still moving out into the ripened harvest fields with the comfort that you never go alone.

Left to right: Gene White, Student Council Representative; Sharon White, Student Council Representative; Sharon Costanzo, Secretary; Joann Killich, Vice President; Bruce Wood, Treasurer.



PHYLLIS BATDORF
Verndale, Minnesota
B.R.E.
American Indian Prayer Band, Vice President 1, President 2, Secretary 3; Girls' Choir 2, Vice President 3; Dorm Council Devotional Committee, Vice President 3, President 4; Missionary Cabinet Secretary 3.



ALVIN BIBER
St. Croix Falls, Wisconsin
B.A. IN BIBLE
Home Missions Prayer Band, Treasurer 3; President 4; Pastor St. Croix Falls Alliance Church 3, 4.



DELINDA BISHOP
Newton, Iowa
B.S. IN MISSIONS
Girls' Choir 1, 2, 3, Historian 4; Women's Council Secretary, 4; Shield Staff, Missions Editor 4.



GARY BORG
Omaha, Nebraska
B.S. IN MISSIONS
Shield Staff, Business Manager 2, 3, 4; Choral Club 1, 2, 3; Fishers of Men 1; Student Council 3, President 4; Brass Ensemble 3, 4.



JOAN BORG
Omaha, Nebraska
B.S. IN MISSIONS FOR NURSES
Choral Club 1, Librarian 2; Missionary Cabinet, Corresponding Secretary 2; Violin Trio 2.



SHARON COSTANZO
Omaha, Nebraska
B.R.E.
Class Officer, Secretary 1, 4; Girls' Choir 1; South American Prayer Band 1, President 2; Student Council 2, 3; Dorm Council 2, 3; Missionary Cabinet, Secretary 3; Shield Staff, Co-Editor 3, 4.



RONALD DAVIS
Janesville, Wisconsin
B.S. IN MISSIONS
Indo China Prayer Band, Vice President 3; Intramurals 1, 2, 3, 4; Basketball 3; Class Officer Vice President 1, President 4; Missionary Cabinet, President 3; Fishers of Men 1, 2, 3; Student Council, Treasurer 4; Dorm Council 3.



DENNIS GORDAN
Sebeke, Minnesota
B.S. IN MISSIONS
Basketball Manager 1, 2; Athletic Committee 2; Indo China Prayer Band, Vice President 2, President 4.



BARBARA HARDWICK
St. Paul, Minnesota
B.S. IN MISSIONS FOR NURSES
Shield Staff 3; Choral Club 3, 4; Island World Prayer Band Vice President 3.

Class of '63

Seniors



GERALD KERR
Fort Wayne, Indiana
B. of Music
Choral Club 1, Treasurer 2, Assistant Director 4; Summer Tour 1; Class Officer, President 2; Dorm Council 2; Student Council 2; Shield Staff, Ad Sales Manager 2; Recital 2, 3, 4; Student Faculty Brass 3, 4.



JOANN KILLIGH
Ann Arbor, Michigan
B.R.E.
Basketball 1; Girl's Choir 1; Missionary Cabinet, Vice President 3, 4; Shield Staff, Class Faculty and Staff Editor 3, Editor 4; Class officer, Vice President 4.



RONALD LORD
New Castle, Indiana
B.A. in Bible
Choral Club 2, 3, 4; Student Council 2; Shield Staff 3; Student Personnel Committee 4; World Prayer Band President 2; Indo-China Prayer Band, Vice President 4; Missionary Cabinet Treasurer 3.



BEVERLY MING
Glendive, Montana
B.R.E.
Basketball 1, 2, 3; Youth Conference 1, 2, 3, 4; Athletic Committee 4; Girls' Choir 3; Shield Staff, Copy Editor 4.



BIRGITTA NUCKOLS
St. Paul, Minnesota
DIPLOMA
South American Prayer Band President 3; Class Officer 3; Co-Laborers 1, 2, 3.



WAYNE RASMUSSEN
St. Paul, Minnesota
B.A.
Pastor of Church 1.



RONALD W. ROHLETTER
White Sulphur Springs, Montana
DIPLOMA
Basketball 1, 2; North American Indian Prayer Band, Treasurer, 1, President 2, Treasurer 3.



LORRAINE SHELDON
Fort Arthur, Texas
B.S. in Missions
Fishers of Men Secretary, 2; Girls' Choir 2; Youth Conference Committee 1, 2; New Student Days 1, 3; Choral Club 3; Athletic Committee 4.



HAROLD VISCHER
St. Paul, Minnesota
DIPLOMA
South American Prayer Band, President 2; Treasurer 3; Shield Staff Ad Sales Manager 2.



VIOLA WANGEN
Summit, South Dakota
B.R.E.
Choral Club 3; Island World Prayer Band, Officer 3; Dorm Council 3; Missionary Cabinet Vice President 3; School Nurse 3, 4.



MADOLON WELK
St. Paul, Minnesota
B.R.E.
Girls' Choir 1, 2, 3, 4; Shield Page 4; Girls Trio 2, 4.



SYLVIA WENTWORTH
St. Paul, Minnesota
B. of Music
Choral Club 1, 2, 3, 4; Octet 1, 2, 3; Trio 1; Girls' Quartet 2; Summer Tour 1, 4; Council Tour 2; School Play 1; Recital 1, 3, 4.



GENE WHITE
St. Paul, Minnesota
B.S. in Missions
Shield Staff, Ad Sales Manager, 4; Student Council Vice President 4; Missionary Cabinet 4; North American Indian Prayer Band President 3, 4; Cheerleader 3; Intramural Basketball 1, 2, 3, 4.



SHARRON WHITE
St. Paul, Minnesota
B.S. in Missions
Choral Club 1, 3; Student Council Secretary 4; Dorm Council, Secretary 3; Missionary Cabinet, Secretary 4; North American Indian Prayer Band, Secretary 3, 4.



BRUCE WOOD
St. Paul, Minnesota
B.R.E.
Basketball 1, 3; Class Officer Treasurer, 3, 4; World Prayer Band President 3; Shield Staff, Sports Editor 4.

Class of '63



Standing above are Junior Class Advisor Mr. J. R. Mason and Junior Class President Don Opp.

Juniors

"I wish it were me," is the main thought in your mind as you watch the Seniors leaving. The remaining year seems like eternity as you stand facing it. Yet there are just two short semesters left in which the weak spots of your education can be strengthened. There is much to the saying that all is not learned in books, but the lessons of life can be bitter if you do not have a foundation upon which to build. Facts that you collect now can be the basis of your decisions tomorrow. So make your last year the most wonderful year as you attempt to finish your collection.

Junior Class Officers, left to right: John Wilson, Vice President; Doris Gatch, Student Council Representative; Norma Seeley, Secretary; JoAnna Metcalf, Treasurer; Dave Baynes, Student Council Representative.



VIRGIL ADAMS
Lake Alfred, Florida



DEAN BACHER
St. Paul, Minnesota



DAVID BAYNES
Beulah Beach, Ohio



WESTON BRASK
Minneapolis, Minnesota



NORMAN DEMMER
St. Paul, Minnesota



MARLYCE EASTMAN
No. St. Paul, Minnesota



ZOE EBERLE
Cedar Rapids, Iowa



WILLIAM FARLEY
Whitefish, Montana



WALTER FRANKENBERRY
Morgantown, West Virginia



DORIS GATCH
Aurora, Indiana



JOYCE JACOBS
Las Casa, Chiapas, Mexico



JOYCE JENSEN
Tyler, Minnesota



BERTHA KATSCHKE
Crandon, Wisconsin

Class of '64

Juniors



THELMA KUGLIN
Redwood Falls, Minnesota



MARY LEIMBERER
Hartwick, Iowa



PAUL LINDBERG
Ronan, Montana



DIANNE CONLEY
St. Paul, Minnesota



DONALD MCELWEE
St. Paul, Minnesota



CLIFFORD MALONE
Watertown, So. Dakota



JOHN MATTHEWS
Minneapolis, Minnesota



JOANNA METCALF
Vermillion, So. Dakota



JACQUELINE MICKELSON
Muscatine, Iowa



RHODA NELSON
Clarkfield, Minn.



BRYCE NUCKOLS
St. Paul, Minn.



JAMES O'HARA
Pittsburgh, Penn.



DONALD OPP
St. Paul, Minn.



MARILYN POAGE
St. Paul, Minn.



LYNN RICHTER
Pittsburgh, Penn.



JOYCE RUDE
St. Paul, Minn.



BONNIE SCOTT
Chadron, Nebraska



NORMA SEELEY
So. St. Paul, Minn.



MARY JO SHAW
Robins, Iowa



JON SKOR
Wildrose, North Dakota



ROBERT STUCK
Dayton, Ohio



DENNIS SUNBERG
Little Falls, Minn.



JOHN WILSON
Minot, No. Dakota



JOANN YOUNG
Maplewood, Montana

Class of '64

Sophomores



Discussing some business is the sophomore class advisor Dr. Donald Trouten and president Norman Ford.

Looking over the class mottos are the Sophomore Class Officers: Diane Conley, Secretary; Kathy Lappi, Student Council Representative; Linda White, Vice President; Dave Showell, Student Council Representative, and Fred Pruessner, Treasurer.



Midstream is a strange and difficult place. This seems to be true of you in studies, in activities, and personality. It is as far back as it seems to be forward. Now many of you face that fork in the stream to stay or to leave. The decisions you make concerning your future college years affect every area of your personal world. You can flounder or drift with ease as you choose. Faith in the God you trust must be strong now as He continues to guide you.



LARRY ADEY
St. Paul, Minnesota



SHARON ALLWINE
Omaha, Nebraska



LARRY ANDERSON
Minneapolis, Minnesota



RALPH ANDERSON
Houston, Minnesota



SUZAN ANDERSON
St. Paul, Minnesota



ANDREA ASPETER
Esland, Wisconsin



GARY BAWDEN
Maywood, Illinois



EDNA BECK
Owen, Wisconsin



SHARON BENHAM
Minot, North Dakota



TERRENCE BENNETT
Ft. Wayne, Indiana



BONNIE BOLSTAD
Savage, Montana



GEORGIA BREAZE
Littleton, Colorado



MARGARET BREVARD
Flint, Michigan



DELMAR BUDKE
Minneapolis, Minnesota



RICHARD CARLSON
Louisville, Kentucky



MARILYN CUTKOMP
Burlington, Iowa



CAROL DANIEL
Hamlet, Nebraska



GORDON DONOHO
Gridley, California



KENNETH DOUGHMAN
St. Paul, Minnesota



DARLENE EASTMAN
No. St. Paul, Minnesota



CHARLENE EVERS
St. Paul, Minnesota



GENEVA FORD
Louisville, Kentucky

Class of '65

Sophomores



NORMAN FORD
Louisville, Kentucky



GERALDINE FRANZ
Corydon, Indiana



BARBARA HESS
Chicago, Illinois



ELIZABETH HUNT
Parma, Ohio



DONA LOU JAY
Boone, Iowa



DENNIS JOHNSON
Minneapolis, Minnesota



ROBERT JUECKSTOCK
Omaha, Nebraska



CAROL KNOUF
Winterset, Iowa



KATHLEEN LAPPI
New York Mills, Minnesota



KENNETH LARSON
St. Paul, Minnesota



SONJA LARSON
Cambridge, Minnesota



JOY LEHMAN
Royal Oak, Michigan



CLYDE LEIMBERER
Hartwick, Ohio



DIANNE LINDSEY
Flint, Michigan



BEVERLY MALONE
Watertown, So. Dakota



DEAN MORIN
Arlee, Montana



CAROLYN MORNINGSTAR
Lincoln, Nebraska



BETTY NEAL
Omaha, Nebraska



MARLENE NELSON
Clarkfield, Minnesota



ERIK NIELSON
Nyack, New York



JAMES OLSON
Hiawatha, Iowa



JOEL PHILLIPS
Monroe, Michigan



FRED PRUESSNER
Charles City, Iowa



GAYLE RADFORD
Pompano Beach, Florida



SALLY REIGEL
Marshfield, Wisconsin



DOROTHY SAUVE
Wadsworth, Ohio



NORMAN SAUVE
Flushing, Ohio



RICHARD SCHRIBER
White Bear Lake, Minnesota



DAVID SHOWELL
Denver, Colorado



DONALD SMITH
Tracy, Minnesota



DONN SNYDER
New Brighton, Pennsylvania



ALVIN STERNHAGEN
Chadron, Nebraska



SHIRLEY STILES
Stillwater, Minnesota



DELORES STUMBO
Okaloosa, Iowa



DOUGLAS SWANSON
Minneapolis, Minnesota



DOROTHY UNRUH
Bismarck, No. Dakota



MARK WALKER
Oklahoma City, Oklahoma



WILLIE WATTS
Minneapolis, Minnesota



EVANGELINE WERNBERG
Rockford, Illinois



LINDA WHITE
Libertyville, Illinois



RICHARD D. WILLIAMS
Chicago, Illinois



RICHARD L. WILLIAMS
Youngstown, Ohio



ROBERT WILLIAMSON
Billings, Montana



MARY YEATS
Omaha, Nebraska

Class of '65



Seated: Freshman Class Advisor, Mr. J. M. Tewinkel
Standing: Freshman Class President, Keith Meerdink

Freshmen

It has been a long time since Freshmen retreat. Now you know each other, and the newness of your surroundings has worn off. In its place there is a routine that at times seems impossible. Look back over the year. A combination of many phases both academically and socially have done much to change and shape a different you. Many of you found so much more to life than you thought possible. Life has more meaning and seems so much bigger.

Only one scene out of four has been unfolded. The others are needed before the complete mural is before you. Paint them well.

Freshmen Class Officers—Standing: Gene Keller, Student Council Representative; Carroll Galvin, Vice President, Seated: Carolyn Stenlund, Secretary; Gwendolyn Franz, Student Council Representative; Marilyn Richards, Treasurer.



WILLIAM ABRAMSON
Minneapolis, Minnesota



BRUCE ALLEN
Oconto, Wisconsin



DALE ANDERSON
Bethel, Minnesota



AUDREY BAILEY
Montgomery, Alabama



DEANNA BALLARD
North English, Iowa



GLORIA BALLARD
North English, Iowa



FAYE BENSON
Verndale, Minnesota



MARLYS BENTLEY
Brainerd, Minnesota



MARILYN BERRETH
Wagner, South Dakota



MYRNA BOND
Ft. William, Ontario, Canada



JOHN BORTEL
Bowling Green, Ohio



PHYLLIS BRADBURN
Hunting, Indiana



CAROLYN BROWN
Wolf Point, Montana



JAMES BRUMET
Toledo, Ohio



JACK BRUNNER
Niles, Ohio



DALE CARLSON
Elmhurst, Illinois



SHARON CARLSON
St. Paul, Minnesota



JOHN CHRISMAN
Zion, Illinois



ELDON COLLEGE
Mountain Lake, Minnesota



RENEE CONGDON
Crane Lake, Minnesota



DIANN COOPER
St. Charles, Iowa



NANCY DALBEY
Greybull, Wyoming

Class of '66

Freshmen



ESTHER DALE
Eldena, Illinois



SYDNEY DORMAN
Cedar Falls, Iowa



WILLIAM EAGLEN
Los Angeles, California



CAROL EASTERDAY
Ottumwa, Iowa



MARILYN EDWARDS
Big Lake, Minnesota



ELDON ELSBERRY
Royal, Nebraska



BEVERLY EVANS
Willowick, Ohio



HOLLY FALC
Chicago, Illinois



RAYMOND FANBERG
Big Lake, Minnesota



BETH FARINEL
Clawson, Michigan



ANTHONY FORD
Louisville, Kentucky



LaRUE FORSEEN
Alwood, Minnesota



SHARON FOSNOW
Minneapolis, Minnesota



GENEVIEVE FRANZ
Corydon, Indiana



GWENDOLYN FRANZ
Corydon, Indiana



DONNA FREIHEIT
Lake City, Minnesota



PAT FRIESEN
Butterfield, Minnesota



CARROLL GALVIN
Watertown, South Dakota



MARCIA GILBERT
Osage, Iowa



RICHARD GILLELAND
Lincoln, Nebraska



PHYLLIS GRAHAM
Mason City, Iowa



BEVERLY GRANDY
Foreston, Minnesota



ELIZABETH GRANDY
Foreston, Minnesota



LaVON GUNN
Wadena, Minnesota



SHARON HALL
Osage, Iowa



JUDITH HEINRICHS
Wolf Point, Montana



MARIAN HICKLER
Monticello, Minnesota



DAVID HILL
Mason City, Iowa



JoANN HOWARD
Dixon, Illinois



ALICE INGWERSON
Lincoln, Nebraska



MARGARET JACOBSON
Watertown, South Dakota



DIANE JENSEN
Tyler, Minnesota



BEVERLY JOHNSON
Mattoon, Illinois



DAVID JOHNSON
Pt. Huron, Michigan



JEAN JOHNSON
St. Paul, Minnesota



ARDATH KAUFMAN
Kalispell, Montana



GENE KELLER
Blairburg, Iowa



DAVID KENDALL
Omaha, Nebraska



JOHN KILAND
Orr, Minnesota



RONALD KIM
Minneapolis, Minnesota



LAWRENCE KNISS
Louisville, Kentucky



SHARON KVOLS
Laurel, Nebraska



LELA LAPP
Kalispell, Montana



RAYMOND LARSON
Hawick, Minnesota

Class of '66

Freshmen



MARK LEWIS
Ottumwa, Iowa



LINDA LINDELL
Oak Park, Minnesota



ANNE LINDQUIST
Buffalo, Minnesota



KENNETH LOEWEN
Mountain Lake, Minnesota



VIRGINIA LOFDAHL
Clarkfield, Minnesota



BONNIE LOTITO
Spokane, Washington



JAMES LOTITO
Spokane, Washington



MAYBELLE LOUCKS
Mason City, Iowa



RUTH LUITEN
New London, Minnesota



JAMES LUTZ
Pine River, Minnesota



MELVIN MCATEE
Aurora, Indiana



STEVE MCGARVEY
Newton, Kansas



LYNN MCMAHAN
Clio, Michigan



JUDITH MALM
Mountain Lake, Minnesota



CAROLYN MATSON
Grand Forks, North Dakota



JOSEPHINE MATSON
Clear Lake, Wisconsin



ROBERT MAXWELL
Lincoln, Nebraska



KEITH MEERDINK
Orchard, Iowa



SHERYL MERTZ
Bowling Green, Ohio



ALICE MILLER
Pekin, Illinois



LORRAINE MILLER
Beamsville, Ontario, Canada



RUTH MILLER
St. Paul, Minnesota



ROGER MORROW
Lincoln, Nebraska



DENNIS NELSON
Milaca, Minnesota



PHILLIP NELSON
Clarkfield, Minnesota



DIANE NICHOLSON
Wadena, Minnesota



SHARON NOBLE
Dixon, Illinois



ROGER OLSEN
Paynesville, Minnesota



JUDITH OLSON
Staples, Minnesota



CAROL OWENS
DuBois, Pennsylvania



PHYLLIS PACKER
Wheaton, Illinois



JUDITH PARKER
St. Charles, Iowa



WILLIAM PARTINGTON
Beaver Falls, Pennsylvania



CAROL PATTON
New Castle, Pennsylvania



WILLIAM PIETERSON
Mason City, Iowa



CONSTANCE PLETINKS
McDonald, Pennsylvania



LANCE RAYGOR
St. Paul, Minnesota



MARILYN RICHARDS
Beulah Beach, Ohio



DARLENE ROBINSON
Wadsworth, Ohio



MAVIS ROLAND
Larimore, North Dakota



CLAUDIA RONNING
Minneapolis, Minnesota



MILDRED SALEFSKY
Green Bay, Wisconsin



GLENDA SALFRANK
Aberdeen, South Dakota



KAREN SCHMIDT
Goodrich, North Dakota

Class of '66

Freshmen



WALTER SCHMIDT
Seattle, Washington



DAVID SJERVEN
St. Paul, Minnesota



MARION SKIFSTAD
St. Paul, Minnesota



BEVERLY SOMMER
Marshfield, Wisconsin



KAROLYN STENLUND
St. Paul, Minnesota



JOHN STRUCK
Minneapolis, Minnesota



WILLIAM SWANSON
Minneapolis, Minnesota



NILA TAYLOR
Minneapolis, Minnesota



KITTY THOMAS
Chicago, Illinois



LEONARD TIESZEN
Billings, Montana



PETER TIMMONS
Sullivan, Illinois



GARRY TOAVS
St. Ignatius, Montana



EARL TWIST
Manning, North Dakota



DIANA VALENTINE
Avoca, Michigan



JUDITH WEBSTER
Crookston, Minnesota



JOANN WIEGOLD
Mt. Lake, Minnesota



KAREN WELK
St. Paul, Minnesota



PAUL WENNINGER
St. Paul, Minnesota



GLORIA WESTBY
Nevis, Minnesota



ROBERT WHEAT
Charles City, Iowa



LINDA WICKSTROM
St. Paul, Minnesota



CAROL WILLIAMS
Hibbing, Minnesota



JUDITH WISSESTAD
Sparta, Wisconsin



JOHN WOLDSTAD
Arlee, Montana



DENNIS WYMORE
Lincoln, Nebraska



JOHN YOUNG
Maplewood, Montana



MARYANN YOUNG
Wadena, Minnesota



RAYMOND YOUNG
St. Paul, Minnesota



JUDITH ZACHARIASEN
Hitterdal, Minnesota

NOT PICTURED

LINDA CARLSON
EVA CLIKEMAN
BONNIE DENNIS
DAVID EGGERT
CLARK GOSS
MARY HELZER
LEON HOFER
THOMAS KUSANT
DIXON MAIN
RICHARD PICKARD
HELEN ROY
KAREN-JO STEIN
DEAN TUTTLE
RICHARD WAYLAND

Class of '66

Unclassified



WAYNE ANDERSON
St. Paul, Minnesota



BONNIE ASPSEIER
Exeland, Wisconsin



FRANK BROWN
St. Paul, Minnesota



ROBERT DUTTON
Boone, Iowa



PRISCILLA FERRIER
Bryan, Ohio



DONNA FREIHEIT
Lake City, Minnesota



LORENE OPP
Minot, North Dakota



GARY STENLUND
St. Paul, Minnesota



SANDRA TONSFELDT
Woodward, Iowa



RUTH VOLSTAD
St. Paul, Minnesota



Standing, left to right: Charles Rowe, Paul Baynes, Carl Sutton. Seated: June Lomire, Lois Wolstead, Shirley Graff, Judy Loberg, Everna Van Ravenhorst.

NOT PICTURED:

Lester Hehr
Robert Hoffman
Allen Klassen
Mac Koll
Neil Lown
John More
Robert Rohletter
Marion Bauman
Calvin Bowin
Darlene Brown
Jerry Darter
Roger Dean
Donald Fenlason
Judith Gowdy
Kathleen Harley
Philip Moelling
Darwin McKillips
Bert Nuckols



Campus Life

Activities	48
Sports	59
Organizations	71

*"Even His peace and His joy
Jesus has given to me;
What can distress or annoy?
I am as happy as He."*



Our two hillbilly friends, Bev. and Linda are proudly showing us their latest attire . . . what's that brand-name on your sweatshirt, Bev?



Only one more blouse to go, is the thought running through the mind of Sharon, while May, wishing that she were in Sharon's place, sits with an armload of clothes.

GIRLS' DORM



Study and pleasure don't generally mix, but with Verna, Diane, and Judy in the party room there is bound to be a little diversion off the studies . . . right, girls?



Most pyramids are very stable, but the one "corner-stone" with the frilly hat seems to be faltering.

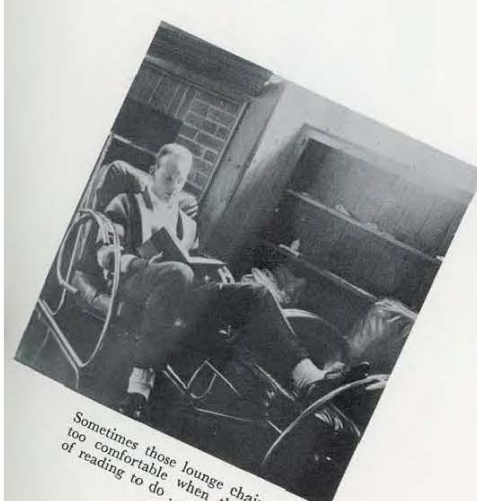


Time out during the course of a busy day to wait before the Lord can be of great blessing and help.



Here we find Denny desperately trying to get that last wrinkle out of his shirt before that six o'clock bell rings for supper on Friday night . . . see you at dinner, Denny?

FELLOWS' DORM



Sometimes those lounge chairs can be too comfortable when there is a lot of reading to do . . . agreed, Rog?



Say, LaRue, isn't your three minute time limit up?

C A M P U S



"My goodness, a fella just got hooked into buying one girl a cup of cocoa and now her friend wants a bag of potato chips."



That favorite time of the day has come around once again when the twelve o'clock bell rings.



Practice makes perfect says Phyllis, as she keeps hitting B flat instead of B sharp. Long hours are spent in the practice room.



Say, Judy, did your mother send that special you asked for in your last letter?



Match—mates seem to be a fitting story for Dot and Dave, wouldn't you say?

C O R N E R S



Say, Bill, is that a pile of leaves in that blanket or is it one of your fellow workers? . . . Just curious.



Just a friendly gesture on the part of Jean to help Steve wash the steps??



It's not quite as bad as being in a prison—cheer up.



Bob is smiling after finally reaching his last window . . . not too many smudges left.



Someone's heart sis did a beautiful job cleaning the room . . . too bad we can't have this system more often . . . yes?

HEART SIS WEEK



Pat Freizen, are you here??



Say Geneva, what was that you got?? Mmmmm, that candy apple sure must be good. Right, Kathy?



Why, Judy Parker, you were my heart sis. I had no idea . . .



Leaving for vacation doesn't present too many difficulties in managing the luggage is a fact agreed upon by both Esther and Marilyn.

VACATION TIME



It's coming back after vacation that presents the problems. I wonder what or who is going to make it through the door first . . .



Our district superintendent, Rev. Carl Volstad, is seen signing the contract for the purchase of the property of Arden Hills.

ARDEN HILLS: PROSPECTIVE CAMPUS



Members present at the signing—Standing: Mr. R. E. Krull, Mr. D. Williams, Mr. S. M. Burton, Attorney Silverstein, Attorney W. L. Ulvin, Mr. Howard Erickson, Mr. Viron Miller, Mr. Stanton Richardson, and Mr. Donald Trouten. Seated: Mrs. Zilliox, Mr. Zilliox, Rev. Carl Volstad, Mayor D. F. Kennedy of Arden Hills, and Rev. David Hustad.



Say, peanuts, whose shoes are those???

CAMPUS HUMOR



New style lamp post . . . oops . . . you're just cleaning it, pardon the slip.

One of our many incidents with the fixing of cars . . . somebody better hold on to that one fellow.



"My only Hawaiian shirt. You just wait, your turn will come," replies Terry.

DEEPER LIFE CONFERENCE

Our speaker, Rev. Morrow, a true man of God, brought heart-gripping messages that will not be forgotten.



A friend to all, Rev. Morrow was always willing to take time out of a busy schedule to chat with the students.

A chain of prayer went up for the meetings the weekend prior to its start . . . prayer was given around the clock.



1963 YOUTH CONFERENCE



Visitors to our campus on this special weekend were greeted by the cheerful smile of the college student at the registration desk.

Bud Peterson was the ministering servant of the Lord during this weekend bringing straight-forward messages to many listening ears. Decisions of dedication and of salvation were made. The Lord truly blessed and moved in the hearts of students and visitors alike.

SPRING ACTIVITIES

Maybe they're the orchids I wanted so badly . . . he sure does look sharp . . . Sure do hope she likes these orchids . . . I've never seen her looking so nice.

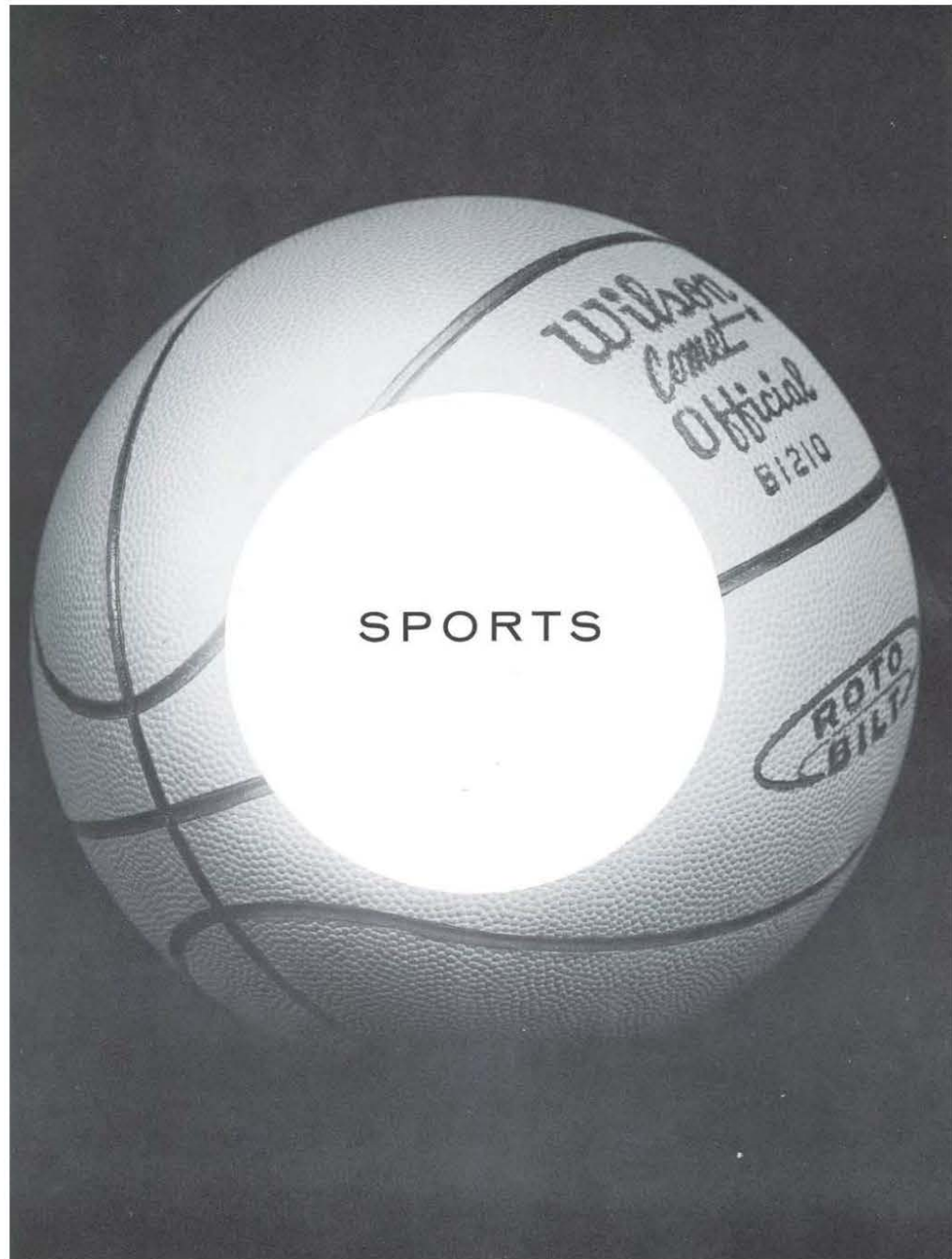


Now what was Mary Jane's address, ponders Vi as she signs the last of her Senior invitations.



Quite a look of desperation on the face of Phyllis Bradburn as she tries to put all the accumulated material of one year in the suitcase along with the things she first brought to school . . . too bad they haven't invented stretchable suitcases.

SPORTS



CRUSADERS



THE CRUSADERS

Left to right: Coach Adams, L. Forseen, A. Klassen, D. Anderson, D. Morin, R. Olson, C. Malone, B. Abramson, K. Loewen, L. Hehr, Mr. Tewinkel, J. Skor, K. Meerdink, D. Showell, Mgrs.

Not shown: Adams, J. Brunko, J. Brunner, D. Carlson, R. Larson, R. Rohletter, B. Swanson, R. Williams.



Mr. Tewinkel
Athletic Director



Mr. Adams
Coach

CRUSADERS' RECORD

St. Paul	64.....	Alumni	61
St. Paul	69.....	North Central	50
St. Paul	80.....	Dr. Martin Luther	77
St. Paul	56.....	Concordia	68
St. Paul	62.....	Northwestern	77
St. Paul	66.....	Minnesota Business	72
St. Paul	83.....	Minnesota Bible	71
St. Paul	78.....	Luther Bible Institute	54
St. Paul	49.....	Pillsbury	75
St. Paul	70.....	Dr. Martin Luther	67
St. Paul	71.....	Minnesota Business	77
St. Paul	47.....	Luther Bible Institute	63
St. Paul	78.....	Minnesota Bible	67
St. Paul	51.....	Pillsbury	61
St. Paul	59.....	Northwestern	93
St. Paul	38.....	Concordia	65
St. Paul	47.....	North Central	58



Good defending, Cliff.



It all began this way. The 1962-63 season began with this opening jump. The Crusaders began the season against the Alumni, defeating them in a closely fought game. This game and the following fifteen proved very exciting. They gave the cheerleaders and fans much to yell about. It was a great season, fellows!





Left to right: Miss Schock, Coach, C. Pletincks, C. Owens, J. Heinrichs, G. Franz, L. Wickstrom, D. Unruh, D. Fedderson, A. Kaufman, B. Evans, Mgr. D. Cooper, A. Lindquist, M. Gilbert, S. Benham, M. Loucks, D. Ballard.

GIRLS' BASKETBALL

St. Paul	39	Alumni	16
St. Paul	33	Northwestern	45
St. Paul	15	Pillsbury	20
St. Paul	49	Lutheran Bible Institute	50
St. Paul	32	Lutheran Bible Institute	30
St. Paul	49	Robbinsdale	39
St. Paul	28	Pillsbury	26
St. Paul	29	Northwestern	56
St. Paul	31	Augsburg	84



Don't let her bluff you, Diann.



Go, Go, Go. We need two points!



Cheer

A-SQUAD

Left to right: Bob Maxwell, Pat Friesen, Edna Beck, Marilyn Richards, Esther Dale.



Time out for a picture.

Bob makes it look easy!



Leaders



B-SQUAD

Left to right: Mavis Roland, Ruth Miller, Dianne Lindsey, Nila Taylor.



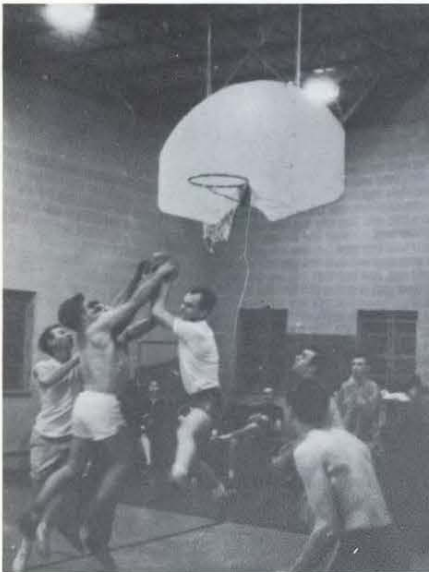
Bob Maxwell and Roger Morrow entertaining at half-time.

The fans were amused at half-time of home games by some of the fellows. Gymnastics and clowning were the main events. The crowd cheered as the boys showed their skills. Thanks, fellows!



The CHAMPIONS—Chi Alpha

Intra-Murals



All that effort for two points!



Everyone gets into the picture.



Mr. Tewinkel, D. Kendall, B. Pierson, J. Brumet, J. Chrisman,
D. Sjerven, J. Bortel, J. Litito, D. Eggert, R. Wayland.

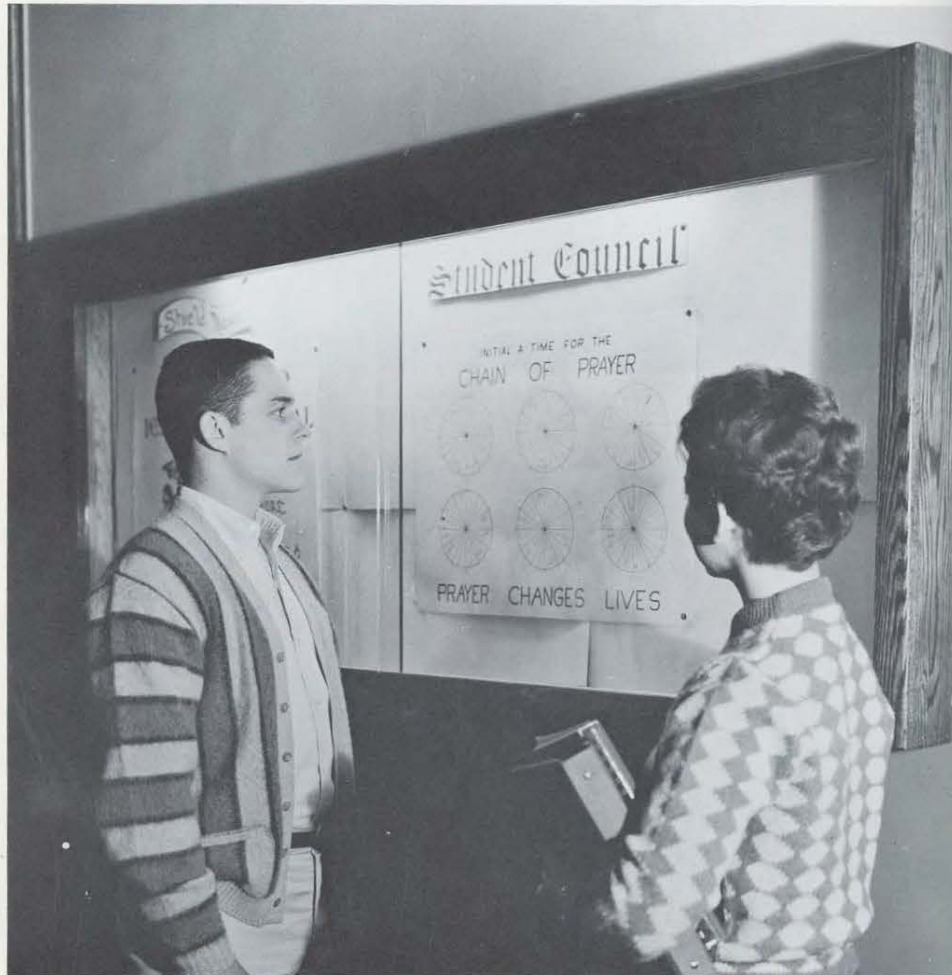
CROSS COUNTRY TEAM RECORDS

St. Paul	30	Pillsbury	25
St. Paul	22	Northwestern	33
St. Paul	25	Pillsbury	31
St. Paul	23	Northwestern	32

Low score wins.

Cross Country Team

ORGANIZATIONS



Roger Olson
Most Valuable Player

The Most Valuable Player Award is given each year to the player who, in the estimation of his teammates, has done the most for the success of the team. Roger Olson was also the high scorer.

Sports Banquet

The final event of every season is a happy occasion. The annual banquet and award night honors our very deserving Crusaders.



What a wonderful way to end the season!

Student Council



Gary Borg, President.

The governing student organization which serves as a link between the student body and the faculty is the Student Council. Composed of class representatives and leaders of campus organizations, the Student Council undertakes such varied activities as Youth Conference, numerous campaigns, all school social events, and is the voice of the student for the general improvement of the college.



Back row, left to right: G. Keller, D. Baynes, R. Davis, K. Meerdink, J. Wilson, D. Opp, D. Kendall, D. White.
Front row, left to right: L. White, D. Unruh, G. Franz, D. Gatch, G. Franz, S. White, G. Borg, standing.



Executive committee: D. White, vice president; R. Davis, treasurer; Gary Borg, president; S. White, secretary.



Zoology test next hour.

Laundry day.

How the Women Live . . .



Room-check today.



A surprise party.



Working for better understanding are, P. Batdorf, President; Miss Decker, Dean of Women; M. Brevard, Assistant to the Dean.

Women's Dormitory Council

The Council of Women Dormitory Students has the self-imposed responsibility of making the stay of its dormitory members more problem-free and more meaningful. It also places great emphasis on practical Christian living.

Seated, left to right: P. Batdorf, J. Malm, D. Gatch, D. Unruh, J. Jensen, D. Bishop, R. Nelson, D. Stumbo.

Standing: G. Franz, E. Beck, J. Parker, B. Somers.





Co-Laborers

Once a month, Co-Laborers, composed of married women students and students' wives, meets for a time of Christian fellowship and inspiration in the Word. The group projects itself beyond its borders by sponsoring various projects which prove beneficial to many.



Back row, left to right: J. Howard, C. Ronning, D. Jensen, L. Wickstrom, M. Nelson, M. Brevard, N. Taylor, D. Nickelson, B. Bolstad, S. Anderson.

Third row: B. Hess, C. Williams, P. Bradburn, E. Benson, Z. Eberle, L. Miller, R. Luiten, S. Dorman, D. Bishop, L. White.

Second row: R. Nelson, pianist, M. Richards, C. Matson, J. Olson, K. Lappi, J. Johnson, M. Gilbert, A. Lindquist, L. Wood, M. Berreth.

Front row: J. Parker, G. Breaze, G. Salfrank, M. Welk, E. Dale, G. Westby, M. Roland, J. Weigold, K. Thomas, L. Hall.

Girls' Choir

"THE LORD IS MY LIGHT" . . . has become familiar music coming from the chapel every Tuesday and Thursday morning. Led by Mrs. Brown, the Girls' Choir has performed in numerous churches of the Twin City area. The Spring tour of nine days increased opportunities to serve the Lord in song.



Mrs. Lucille Brown, Director

The Saint Paul Choral Club



Back row, left to right: R. Kim, J. Skor, C. Galvin, A. Ford, L. Kniss, P. Timmons, A. Sternhagen.

Third row: S. Mertz, S. Kvols, G. Franz, D. Balton, J. Matthews, V. Adams, B. Abramson, J. Heinrichs, M. Beth Helzer, N. Seeley.

Second row: C. Pletincks, R. Miller, V. Lofdahl, J. Michelson, S. Wentworth, J. Jensen, B. Hardwick, J. Larson, G. Franz.

Front row: M. Poage, G. Franz, E. Beck, M. Yeats, D. Stumbo, M. Jacobson, M. Ann Young, B. Farinel.

Instrumentalists: J. Kerr, C. Evers, P. Wenninger, T. Bennet, G. Toavs, J. Lutz.



Mr. James Davies, Director

Under the new direction of Mr. James Davies, the Choral Club spent many hours learning and perfecting new musical numbers. The annual spring tour centered in the Midwest. The three-week excursion included North and South Dakota, Montana, Nebraska and Iowa. In addition to the tour the group performed in many concerts in the Twin City area.



Relaxation . . .



Inspiration . . .



Preparation . . .



The Brass Ensemble poses informally.

Shield

The privilege of the Shield staff has been to recreate many of the experiences worth remembering during the year. To serve your memory it has made use of its creative, imaginative and photographic feelers.



J. Killich, Editor, consults with the Shield Advisor, Mr. J. C. Wenninger.

Section Editors, left to right: V. Lofdahl, B. Wood, D. Kendall, D. Bishop, M. Richards, J. Parker, R. Volstad.



S. Costanzo, Assistant Editor.



Seated: S. Mertz, S. Reigel, Public Relations; D. Harris, manager, C. Stenlund, R. Miller. Standing: M. Lewis, R. Kim, Book Sales.



D. White, Ad Sales Manager, G. Borg, Business Manager.

J. Borg, B. Ming, Copy Editors.



C. Mortimer, B. Williamson, Photographers.





College Service

Missions	84
Christian Service	90

*"When with my Lord I appear
Like Him I know I shall be;
But while I walk with Him here,
I may be even as He."*



MISSIONS



Decorations, guest speakers, panels, seminars, and films combine to make our Campus Missionary Conference held each fall, a time of heart-searching and of renewed missionary vision.



Dr. Robert Smith—Bethel College



Left to right: Rev. Clark Gardner, Mrs. Gardner, Mr. Richard Olson, Mrs. Constance, Rev. George Constance.

Fall '62 Missionary Cabinet



Left to right: C. Malone, J. Killich, W. Frankenberry, R. Nelson, D. White, J. Borg.



Mr. Conley, chairman of the Missions Department serves as the advisor to the missionary cabinets.

Spring '62 Missionary Cabinet



Left to right: S. White, D. Opp, D. Gatch, J. Wilson, J. Metcalf, D. Baynes.



The missionary cabinets have complete charge of the Friday night Missionary Meetings. In these meetings the students are inspired to go, give, and pray for

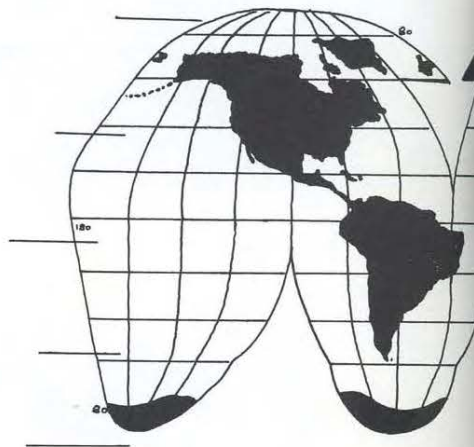
BINDING THE WORLD

North American Indian

Home Missions

Island World

Latin America



TOGETHER BY PRAYER

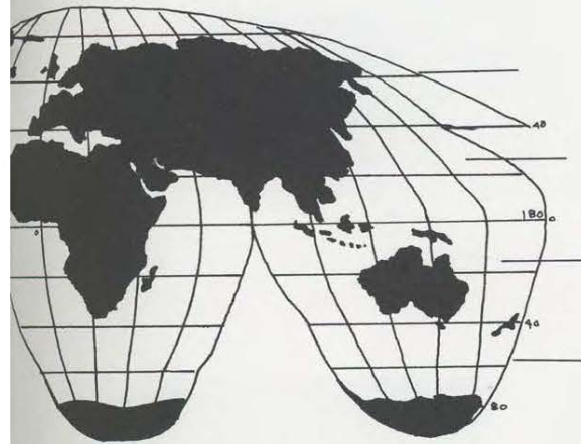
Africa

Near East India

Indo-China

Europe

China and Japan



The prayer bands, meeting weekly, represent our mission fields around the world and serve as a vital link in the soul-winning endeavor.

Christian Service



Christian Service assignments provide a challenge and an opportunity to use every talent in service for Christ. Assignments become privileges as the Lord blesses both those who listen and those who serve.



Rev. Charles Shepson
Christian Service Director



Miss Darlene Brown
Christian Service Secretary



'Neva teaches her class the meaning as well as the words to the song.



... waiting to be used for the Master.



"Preach the Word, be instant in season, and out of season."



Together, Margaret Jacobson, pianist; Marilyn Poage, Sheryl Mertz and Marilyn Richards, make beautiful music.



Jody's mission field—the young people of junior church.



"... I will sing praise to my God while I have my being,"
Psalm 104:33.



In Sylvia's mind preparation is important



"Musical Reflections"



"Praise ye the Lord with stringed instruments."—Psalm 150:4b



"And He has put a new song in my mouth."—Staff trio: Carol Schock, Gloria Vernon, Anita Henkaline and Darlene Brown, pianist.



The Nelsons, brother and sisters, blend their voices in song.



"Be ready always to give an answer . . . of the hope that is within you."—I Peter 3:15.



"A touch of brass"



Kitty and Carol work together for their Lord by teaching Sunday School.

A "time-saving" device—a metronome.



An A#-1 Pianist!—is Virginia Lofdahl.

Gene Keller—soloist.



Every Saturday evening and Sunday afternoon, students from our school hold services at the Union City Gospel Mission in Minneapolis.

UNION CITY GOSPEL MISSION



This mission, which stands for the Gospel of Christ, has been a field of ministry for our students for many years.

FISHERS OF MEN

Fishers of Men is an organization which provides an opportunity for students to reach the lost for Christ. Each Sunday afternoon contacts are made through door-to-door witnessing and the distribution of Gospel tracts. The primary purpose of Fishers is to fulfill Christ's command to go and preach the Gospel to all men. This year evidence of the working of the Holy Spirit has been seen in the souls brought to a saving knowledge of Christ. As they go out to witness, the students have the assurance that God's Word will not return void.

Fishers of Men is under the leadership of Norman Ford, President; John Wilson, Vice President; Sharon Benham, Secretary; Dean Morin, Treasurer; and John Jennings, Area Secretary.



Students arm themselves with Swords of Truth—Gospel tracts.



Going forth in the power of God.



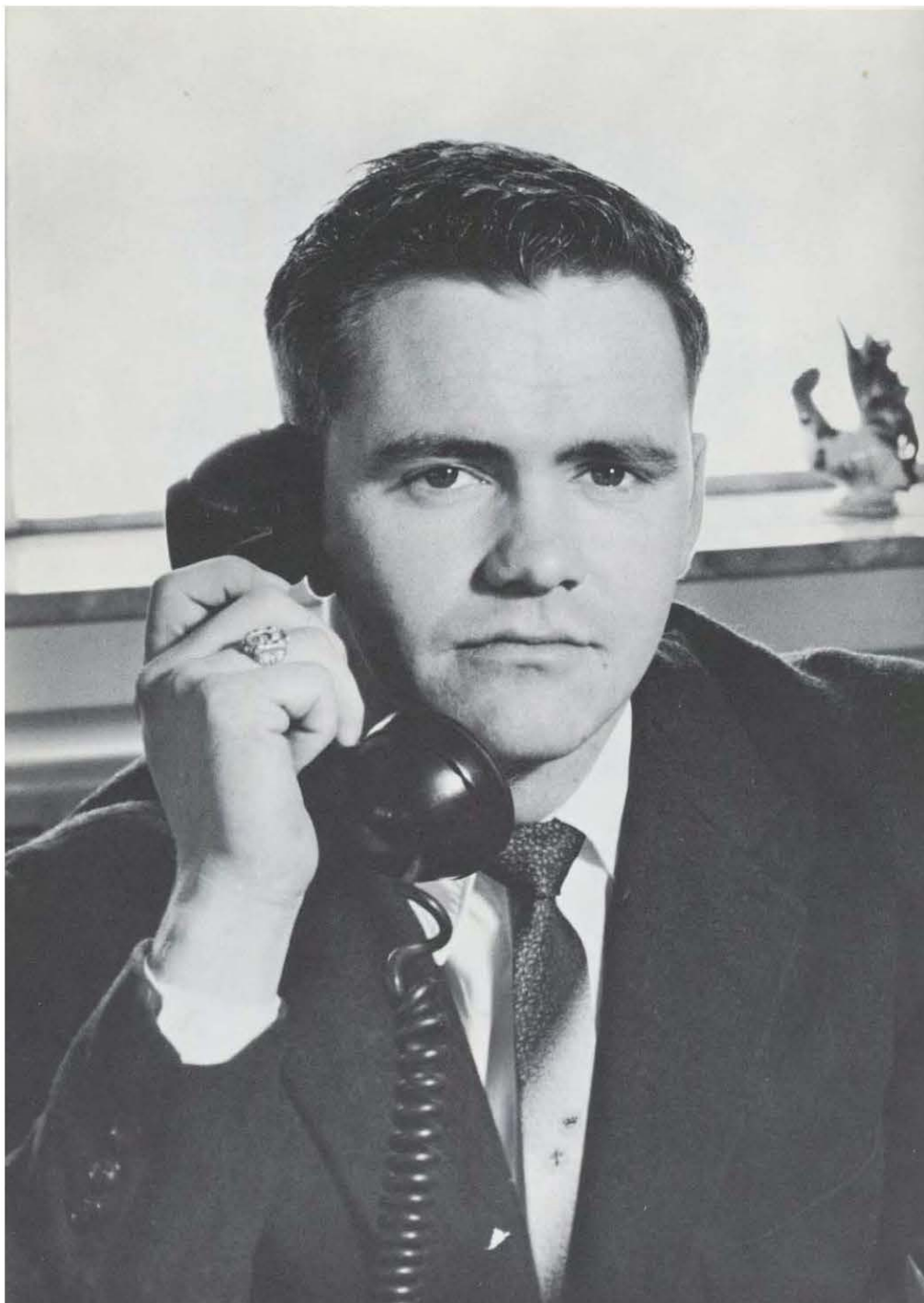
Prayer—the vital part of preparation.



Special music is also a part of the afternoon service.



Keeping records of people contacted is a key factor in the "follow-up" program.



Advertisers

*"All that He has shall be mine,
All that He is I shall be;
Robed in His glory divine,
I shall be even as He."*

CONGRATULATIONS AND BEST WISHES
CLASS OF '63

SIMPSON MEMORIAL CHURCH

1645 CHARLES AVENUE
SAINT PAUL 4, MINNESOTA

JAMES E. DAVEY, Pastor

"A Twentieth Century Program — A First Century Message"



Services:

Sunday — 10:45 A.M. and 7:00 P.M.

Wednesday — 7:30 P.M.

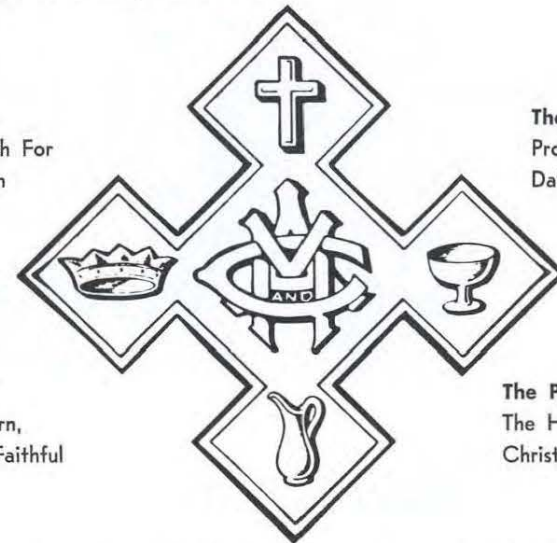
Church School: Sunday — 9:30 A.M.

Full Youth Program: Sunday — 5:45 P.M.

"Let us take this glorious gospel for ourselves, and then give it to all within our reach and thus prove that it is indeed the whole gospel for the whole man and the whole world." — Dr. A. B. Simpson, 1843-1919.

The Cross:
Christ's Death For
Our Salvation

The Laver:
Provision For Our
Daily Cleansing



The Crown:
Christ's Return,
Reward Of Faithful

The Pitcher:
The Holy Spirit,
Christ For The Body

TO MEMBERS OF THE CLASS OF 1963, GREETINGS AND CONGRATULATIONS!

We join with you in your prayer for the guidance of God's Holy Spirit
in the life work you will soon be undertaking.

The International Headquarters of

THE CHRISTIAN AND MISSIONARY ALLIANCE

The Foreign Department
The Finance Department
The Education Department

The Home Department
The Alliance Witness
The Publications Committee

260 WEST 44th STREET

NEW YORK 36, NEW YORK

In Canada: 1634 BAYVIEW AVENUE, TORONTO 17, ONTARIO



ST. PAUL BIBLE BOOK STORE

1361 Englewood Avenue

St. Paul 4, Minnesota

BIBLES • DEVOTIONAL BOOKS • FICTION
DICTIONARIES AND COMMENTARIES

VISUAL EDUCATIONAL SUPPLIES • CHURCH SUPPLIES
GIFT ITEMS • GREETING CARDS FOR ALL OCCASIONS

COMPLETE LINE OF D.V.B.S. MATERIAL

WE INVITE YOUR MAIL ORDERS

EDNA TEETER, Manager

LEONARD M. CARLSON

PAINTING AND DECORATING

1671 Hewitt Ave.

Phone: 644-8917

COWS WILL BE COWS . . .

and even the selected beauties that produce your Sanitary Farm Dairies milk sometimes eat weeds. But you'll never get off-flavors from weeds or other causes in your Sanitary Farm Dairies milk because . . .

IT'S

VACUUMIZED

Vacuization is a process using patented stainless steel equipment which removes all air from milk, and with the air it removes all off-flavors, such as those caused by weeds, dandelions and high-acid silage.

Sanitary Farm Dairies employs this revolutionary new process which seals in the fine, rich flavor of pure, fresh milk . . . insures uniform flavor and quality every day of the year. It's milk at it "Flavorbest".

"Dairy Products of Fine Flavor"

Phone CA. 4-4991

For service at your home

Sanitary
FARM DAIRIES

CONGRATULATIONS AND BEST WISHES

To The
Graduating Class of 1963

From

THE CENTRAL DISTRICT
OF THE
CHRISTIAN AND MISSIONARY ALLIANCE



New Food Service Building — Beulah Beach, Ohio

Representing the States of

Ohio — Indiana — Michigan — Kentucky — West Virginia — Southern Illinois — Southern Missouri

District Headquarters
Beulah Beach, Ohio

District Superintendent
Rev. David N. Clark

CHRISTIAN PUBLICATIONS INC.

CONGRATULATIONS CLASS OF '63

*"... and you shall know the truth and
the truth shall make you free."*

John 8:32

Third and Reily Streets
Harrisburg, Pa.

EDUCATION WITH A STRONG SPIRITUAL EMPHASIS

St. Paul Bible College purposes to give its students the best possible education in a Christ-centered atmosphere. The essentials of scholarship have been combined with a positive spiritual emphasis to adequately prepare Christian young people for the highest kind of service.

St. Paul's academic program includes: Christian Education; Music; Philosophy; History; Bible and Theology; Missions; and Missionary Education for Nurses. For complete information write for a free brochure and catalog.

ST. PAUL BIBLE COLLEGE
ENGLEWOOD AT HAMLINE ■ ST. PAUL 4, MINNESOTA



CONGRATULATIONS CLASS OF '63
ALLIANCE MISSIONARY CHURCH

28th Avenue West at First Street
Duluth, Minnesota

EDISON G. BROOKER, Pastor

CONGRATULATIONS
to the Class of '63

from the

WESTERN DISTRICT

Serving

N. Illinois and Missouri, S. Iowa, Nebraska, Kansas
Colorado and Wyoming

"An Opportunity For You"

District Hdqts.
Omaha, Nebraska

District Supt.
Rev. Harry E. Jueckstock

For the UNUSUAL in Flowers

BARR'S FLOWER SHOP

Midway 6-7941

Snelling at University . . . St. Paul 4, Minn.
Res. Midway 4-9970

MIDTOWN BARBER SHOP

634 North Snelling Ave.

The Students of the School appreciate the neat work and pleasing atmosphere of this Christian barber shop. There is a reason why this skilled Christian barber is always busy.

HAMLINE HOTEL

Reasonable Daily and Monthly Rates
MEALS AVAILABLE IN COFFEE SHOP
Free Overnight Parking

545 No. Snelling Ave.
2 Blocks No. University

MI. 6-7148

HAWKINSON'S JEWELRY

Hamilton - Elgin - Bulova Watches
Expert Watch Repairing

491 N. Snelling at University MI. 5-1077

BECKLUND JEWELERS

1511 East Lake St., Minneapolis

Open Monday and Friday Evenings Till Nine
No Charges For Credit

DEAL WITH CHRISTIAN CONFIDENCE,



LARGEST SELECTION IN THE NORTHWEST

CONGRATULATIONS CLASS OF '63

KEMP PHARMACY

Hamline and Thomas

Midway 4-2877

Midway 6-9019

WASHING - GREASING - TIRE REPAIR
TIRES - BATTERIES - ACCESSORIES

LEN'S SHELL SERVICE

Hamline and Thomas

St. Paul, Minn.

"Large enough to serve you . . . Small enough to know you"
Press Only . . . While You Wait

HAMLINE CLEANERS

1 Hr. Service 6 days a week
1 Day Shirt Service, 4 for 99¢

Snelling and Minnehaha

Midway 4-5885

St. Paul 4, Minn.

COAL - COKE - BRIQUETS FUEL OIL

FOR YOUR HOME OR BUSINESS

"BLUE POINT" POCAHONTAS — ALL SIZES
"STOTT BRIQUETS" "PETROLEUM BRIQUETS"
"PETROLEUM CARBON COKE" "KOPPERS COKE"
"COMMANDER" — KENTUCKY'S FINEST STOKER COAL
"PURITAN" — W. KENTUCKY 1" x 1/4" STOKER COAL
"AMAZON" — W. KENTUCKY 1 1/4" x 1/4" STOKER COAL
"FIRE KING" — SOUTHERN ILLINOIS STOKER COAL
FUEL OIL

FOR LARGE OR SMALL ORDERS
Midway 6-6511

GREAT LAKES COAL & DOCK CO.

2102 University Ave. St. Paul, Minn.

To The Graduating Class of '63
SINCERE CONGRATULATIONS

FROM

The Members and Friends of



The Christian and Missionary ALLIANCE CHURCH of HAZEL PARK

1795 East Seventh St.

Saint Paul, Minnesota

Lowell C. Strumpher,
Minister

J. M. Tewinkel,
Music Director

"You Are Never A Stranger Here . . ."

For Information Call . . . PR. 1-1152



Congratulations to the Class of '63

CHURCH OF THE OPEN DOOR

(Christian and Missionary Alliance)

39th Avenue North and Belt Line
Robbinsdale, Minnesota

Sunday School 9:30 A.M.
Sunday Services 10:45 A.M. & 7 P.M.

DAVID B. HUSTAD, Minister

SECURITY WHOLESALE GROCERY CO., INC.

Suppliers To

FINER RETAIL FOOD MARKETS, INSTITUTIONS, CLUBS,
HOTELS AND RESTAURANTS

FOR THE FINEST IN FOODS . . .

INSIST ON DINNER PARTY LABEL

321 Grove Street

Saint Paul, Minnesota

When You Are In Lincoln . . .



HAVELOCK ALLIANCE CHURCH

"A Going Church For A Coming Christ"

Pastor: James T. Cunningham

6433 Havelock Ave.

Lincoln, Nebraska



Congratulations to the Class of '63

THE ROSE HILL ALLIANCE CHURCH

2417 W. Larpenteur Ave. Saint Paul

REV. RICHARD LUDWIGSON

Sunday School - - - - - 9:45 A.M.

Sunday Services - 11:00 A.M. and 7:00 P.M.

Church Phone: MI.5-3340 Parsonage Phone: MI. 5-9691

MIDWAY MOTOR LODGE

MR. DAVID CHASE, Manager

1964 University Ave.

MI. 5-8681

COMPLIMENTS OF BARNES and SMITH

1220 W. Minnehaha

Westlunds Food Markets, Inc.

QUALITY MEATS, FISH and POULTRY

Quick Freeze Service and Frozen Foods

597 N. Snelling Ave. (Midway) St. Paul E4, Minn.

LOCKER RENTALS — Midway 4-8621

Friendly Service At JERRY'S TEXACO SERVICE

BRAKES - MUFFLERS - GENERATORS - TUNE-UPS

699 Snelling Ave.

St. Paul

Call MI. 6-9959 For Towing Service

JERRY HABISCH, Prop.

DON EKELUND COFFEE CO.

Distributors of MAXWELL HOUSE COFFEE and
Specialty Foods

428 Washington Ave. No.

FEderal 6-2656

Minneapolis 1, Minn.

INDUSTRIAL SPRAY PAINTING CO.

4300 Main Street Northeast
MINNEAPOLIS 21, MINNESOTA

AL and ARNE TOEWS

DOM'S SHOE SHOP

Minnehaha and Hamline

PEERLESS CLEANERS

Hours 7 a.m. to 6 p.m.

Efficient Delivery Service

20% Discount To All St. Paul Bible College Students

729-21 No. Snelling

St. Paul, Minnesota

UNCLE JOHN'S PANCAKE HOUSE

Snelling Avenue at Highway 36

open 'til 3 A.M. Friday and Saturday

other days until midnight

The NEW

HENRY

Funeral Home

536 No. Snelling at Charles

St. Paul 4, Minn.

MI. 6-2844

MIDWAY



BANK

578 University

Midway Center

LLOYD'S PHARMACY

Accurate
PRESCRIPTION SERVICE

SCHOOL SUPPLIES

720 N. Snelling

TYPECRAFTERS

VICTOR ANGERHOFER AND ASSOCIATES

500 Robert Street

436 Rossmor Building

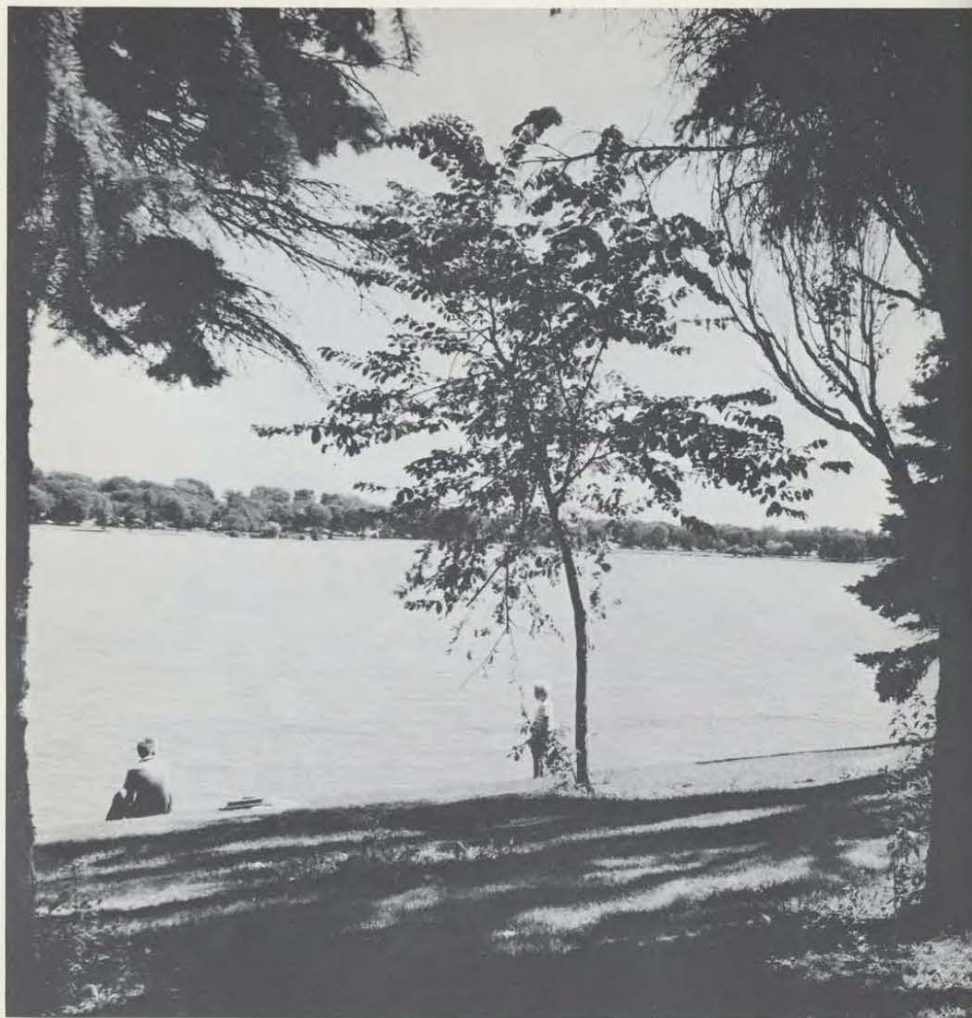
St. Paul 1, Minnesota

CApital 4-6036

HAMLIN HARDWARE & PAINT

TEL. MI. 4-3037

Snelling and Englewood



SUMMER

*As the summer flowers blooming . . .
Some to fade and some to last,
Only hardy students study
Till the first year course is past.*

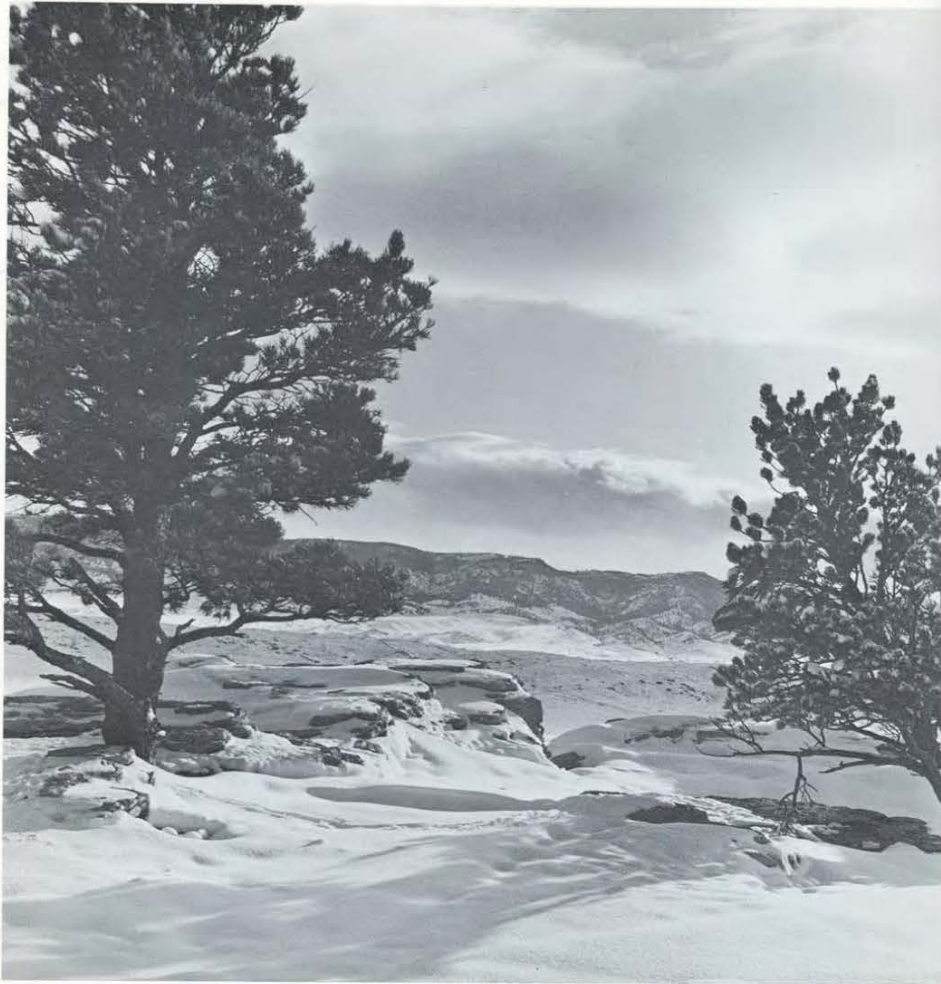
The Freshman Class



FALL

*Sophomores, like the tender saplings . . .
Holding leaves and fruit still fast,
Are as young trees standing firmly
Mid fall shadows' somber cast.*

The Sophomore Class



WINTER

*Then the juniors, sturdy, strong trees . . .
Draws new strength to face the blast,
Of a winter harsh, but wonderful
In beauty that is vast.*

The Junior Class



SPRING

*All too soon it is commencement . . .
As the spring marks winter's end,
Like the pattern of the seasons
Thus our years at school we spend.*

The Senior Class

CONGRATULATIONS
to the Class of 1962

From the Members

GRAND AVENUE ALLIANCE CHURCH

3100 Grand Avenue South
Minneapolis :: Minnesota

"The church in the heart of Minneapolis
with Minneapolis on its heart"

Students:

Viola Wangen	Ron Kim
James O'Hara	Sharon Fosnow
Bruce Wood	Bill Swanson
Linda Wood	Bill Abramson
Douglas Swanson	Claudea Ronning
Sharon Koals	

"It Pays to Drive a Little Farther"

FLOWERS

The Ivy Shop

395 No. Snelling Ave.
Saint Paul 4 :: Minnesota

MI. 6-7259

Swanson's Paint & Wallpaper — ARTIST SUPPLIES —

Stores Conveniently Located in Greater St. Paul
"Friendly Service for Over 69 Years"

Main Store - 512 No. Snelling Ave. - MI. 6-7178

DUTCH BOY PAINTS AND VARNISHES

Congratulations From . . .

The NORTH BROOK ALLIANCE CHURCH

Warm Spirit—A Christ-Centered Message

Sunday School 9:45 A.M.
Morning Worship 11:00 A.M.
Youth Fellowship 6:00 P.M.
Evening Service 7:00 P.M.
Midweek Prayer 7:00 P.M.

REV. PAUL BUBNA PASTOR

6240 Aldrich Avenue North
Minneapolis 30, Minnesota

Church Phone - - - 561-2664
Parsonage Phone - - - 561-1294

BIG ENOUGH TO SERVE **YOU**
SMALL ENOUGH TO KNOW **YOU**

Courteous, Convenient
Complete Banking Service

LIBERTY STATE BANK

MEMBER FEDERAL DEPOSIT INSURANCE CORPORATION

Selby and Snelling MI. 6-8681

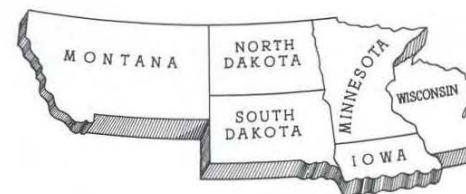
Congratulations to the Class of '63

COMPLIMENTS OF
A FRIEND

C. J. and H. W. ANDERSON JEWELERS

Hamilton - Elgin - Wittnauer Watches
1466 University Ave. Midway Center
Midway 4-9910

THE NORTHWESTERN DISTRICT



extends Congratulations and Best Wishes
to the
Class of '63



A Christ-centered ministry
in the interests of
world-wide evangelism

CARL VOLSTAD, District Superintendent
LEO BERRETH, Assistant Superintendent
Northwestern District of the Christian
and Missionary Alliance

District Offices at 1361 Englewood Avenue
Saint Paul 4, Minnesota

Preferred Risk Mutual
INSURANCE COMPANY



Special Low Rates for Non-Drinkers Only

**AUTOMOBILE
INSURANCE**

**HOSPITALIZATION
INSURANCE**

**HOMEOWNERS
INSURANCE**

NOTE: A good way to cultivate thrift is by our New Savings Plan written exclusively for the non-drinker . . . Ask to see our exciting film about the Savings Plan.

STUDENTS: If you are between 21 and 25 and drive, PREFERRED RISK is the only Standard Company that can insure you.

GEORGE R. FOWLE

MIDWAY 9-9914 — Call day or night
1841 GLEN TERRACE - ST. PAUL

"A Former Student of the S.P.B.C."

EARL'S MISTER PIZZA

PLEASANT DINING ROOMS

PIZZA

SPAGHETTI

SPUMONI

TAKE-OUT ORDERS

Hours: 11:00 A.M. - 2:30 A.M.

Closed Sundays at all locations . . . to encourage and allow our employees to attend church—The Lord's Day.

THANKS FOR YOUR PAST PATRONAGE

GOD BLESS YOUR FUTURE

DELIVERY SERVICE
IN HOT OVENS
MI. 5-9391

1748 No. Lexington
HU. 8-5585

467 No. Snelling Ave.
MI. 5-2522

841 Grand Ave.
CA. 4-7825

Lowest operating costs assure more Blue Cross benefits



Here are the reasons for unsurpassed value! . . . Blue Cross is a *non-profit* hospital-sponsored community service. It has no stockholders . . . pays no dividends. That's why *less* of every income dollar goes for operating expenses. The rest is available to provide health care benefits for subscribers. Lowest operating costs mean the highest return to subscribers—more benefits returned than any other type of coverage!

More Minnesotans are protected by Blue Cross than any other plan. They know . . . dollar for dollar, benefit for benefit, you can't buy better coverage than Blue Cross.

**ALWAYS THERE . . . WHEN
YOU NEED CARE!**



For more information, write:
Minnesota Hospital Assn., 2610 University Avenue, St. Paul 14, Minn.

HITI STUDIO

In The Midway

Portraiture and Commercial

Any Thing — Any Where — Any Time

University At Snelling
1547 University Ave. St. Paul 4
Midway 4-3690

L. LEONARD HITI
Master of Photography

Compliments of

ROSE BOWL LANES

2057 No. Snelling Avenue

Call us for
Open Bowling Reservations
MI. 5-9466

Congratulations To

CLASS OF 1963

GREENBERG'S GARAGE

RAMBLER

SALES and SERVICE

NOWTHEN, MINNESOTA
P.O. ANOKA, RT. 2

Phone — ELK RIVER - 489W11
ANOKA - HA 1-8891

GREETINGS . . .
IN THE GOSPEL

FROM

FIRST BAPTIST CHURCH

10th and Harmon

Minneapolis :: Minnesota

DR. CURTIS AKENSON, Pastor

FIRST COVENANT CHURCH

Chicago Avenue and Seventh Street South
Minneapolis, Minnesota

PASTOR

Rev. Paul P. Fryhling

SCHEDULE OF SERVICES

Sunday School, Classes for All Ages 9:45 A.M.
(College Age Class)
Morning Worship Service 11:00 A.M.
Broadcast over KTIS-FM, Minneapolis; KFMW, Fargo;
KICY, Nome, Alaska
Evening Evangelistic Service 7:00 P.M.
Thursday Evening—Bible Study and Prayer 7:30 P.M.

YOUTH ACTIVITIES

SUNDAY

8:30 P.M., College Age Fellowship

Three age groups comprise THE FELLOWSHIP OF YOUTH LEAGUES, providing an outlet for the interests of youth. A CHRIST-centered program of buoyancy and enthusiasm, geared to our times, includes worthwhile speakers, discussions, films and socials.

WE WELCOME YOU TO WORSHIP WITH US

SIMPSON has one aim . . .

. . . and this is training for service. That's why for over forty years Simpson has been called the "Gateway to World Service." Simpson's graduates may be found all over the world serving as both laymen and clergy. High academic standards and practical training in methods of Christian service coupled with dynamic inspiration toward Christian living produce graduates that are in demand. Are you concerned about the world in which you live? Are you interested in a college training that does more than prepare you for an occupation? For further information, write to the Director of Public Relations.

"gateway to world service"

SIMPSON BIBLE COLLEGE

801 SILVER AVENUE

SAN FRANCISCO 24, CALIFORNIA

Midway Typewriter Exchange

SALES - SERVICE - SUPPLIES - RENTALS

Typewriters and Business Machines
All Makes and Models

736 N. Snelling

Carl W. Wagener

MI. 5-7451

FLOWERS

DISTINCTIVE GIFTS

The Ivy Shop

395 No. Snelling Ave.

Saint Paul 4

::

Minnesota

HAMLIN BARBER SHOP

595 North Hamline Avenue
at Thomas

KNUTSON KWIK SHOP

1338 Thomas at Hamline
GROCERY - DAIRY - FRESH BAKERY
When you run out—run in.

TASTE OF NORWAY

Thor's Bakery & Coffee Shop

1332 Thomas Avenue
Midway 5-3744 St. Paul 4, Minnesota

CONGRATULATIONS TO THE
GRADUATING CLASS OF 1963

The SUPERIOR GLASS APARATUS CORPORATION

Specializes in Scientific Aparatus

Glass Blower:
GEORGE A. KILICH

5581 VREELAND ROAD
ANN ARBOR, MICHIGAN

*"Whatsoever ye do, do it heartily, as to the Lord,
and not unto men." — Col. 3:23.*

To each graduating Senior we extend our congratulations upon completion of course work and commencement of future work for the Lord. May you find your place in His will for your future work whether it be continued study or Christian service.

We welcome you as a member of the Alumni Association and trust you will join us in providing for a stronger school through your support in giving and prayer.

Alumni Committee members:

Rev. Chris Hainlen — Executive Secretary
Rev. Robert Gibson — President
Rev. Eldon Brown — Vice President
Carol Schock — Secretary
Mrs. Edna Teeter — Treasurer
Rev. Merton Tanner — Committee
Phil Rychner
Rev. Ronald Fletcher
Leon Bowman
Rev. Joseph
Donald White

SHOULD YOUR PREPARATION FOR CHRISTIAN SERVICE REQUIRE FURTHER COLLEGE OR SEMINARY TRAINING, WE INVITE YOU TO PRAYERFULLY CONSIDER BETHEL... "A CAMPUS OF CHRISTIAN SCHOLARSHIP."



BETHEL COLLEGE AND SEMINARY
SAINT PAUL 1, MINNESOTA



COMPLIMENTS OF SOULS HARBOR

where all things are anchored in Jesus

Sunday School	-	-	-	-	-	-	-	-	9:30 A.M.
Morning Worship	-	-	-	-	-	-	-	-	10:45 A.M.
Television Channel 9	-	-	-	-	-	-	-	-	10:00 A.M.
Youth Groups	-	-	-	-	-	-	-	-	6:00 P.M.
Evangelistic Meeting	-	-	-	-	-	-	-	-	7:00 P.M.
Thursday, Deeper Life Service	-	-	-	-	-	-	-	-	7:30 P.M.

REVEREND GORDON K. PETERSON, *Pastor*
The Man with the Message

Not to be ministered unto but TO MINISTER



STUDENT DIRECTORY

ABRAMSON, William O., 1807 Dupont Ave. So., Minneapolis 3, Minnesota
 ADAMS, Virgil W., 330 Columbia, Lake Alfred, Florida
 ADEY, Larry E., 2599 Lexington Ave. No., St. Paul, Minnesota
 ALLEN, Bruce D., 601 Washington St., Oconto, Wisconsin
 ALLWINE, Sharon D., 3316 No. 47 Ave., Omaha 4, Nebraska
 ANDERSON, C. Larry, 5324 - 32nd Ave. So., Minneapolis, Minnesota
 ANDERSON, Dale A., Rural Route No. 1, Bethel, Minnesota
 ANDERSON, Ralph, Houston, Minnesota
 ANDERSON, Rosella M., P.O. Box 162, 915 Second St., Hudson, Wisconsin
 ANDERSON, Suzan L., 1285 W. Minnehaha, St. Paul, Minnesota
 ANDERSON, Wayne W., 337 Michigan Street, St. Paul, Minnesota
 ASPETER, Andrea, Box 124, Exeland, Wisconsin
 ASPETER, Bonnie, Box 124, Exeland, Wisconsin

BACHER, Dean R., 265 Dayton, No. 2, St. Paul 2, Minnesota
 BAILEY, Audrey M., Route No. 4, Box 180, Montgomery, Alabama
 BALLARD, Deanna K., North English, Iowa
 BALLARD, Gloria F., North English, Iowa
 BALTON, David, 14 Chapman St., Bloomfield, N.J.
 BANEK, Jerry L., McLaughlin, South Dakota
 BATDORF, Phyllis, Route No. 2, Verdale, Minnesota
 BAUMAN, Marion, Minot, North Dakota
 BAWDEN, Gary, 1014 Greenwood, Maywood, Illinois
 BAYNES, David, Beulah Beach, Ohio
 BAYNES, Paul, Beulah Beach, Ohio
 BECK, Edna M., Owen, Wisconsin
 BELL, Mark O., Route No. 1, Kalispell, Montana
 BENHAM, Sharon L., Parkview Tr. Ct., Minot, North Dakota
 BENNETT, Terrence, 4502 Wilmette, Ft. Wayne, Indiana
 BENSON, Faye E., Route No. 2, Verdale, Minnesota
 BENTLEY, Mariys K., Route No. 6, Brainerd, Minnesota
 BERRETH, Marilyn J., Wagner, South Dakota
 BIEBER, Alvin, St. Croix Falls, Wisconsin
 BISHOP, Delinda, Route No. 3, Newton, Iowa
 BOLSTAD, Bonnie, Route No. 1, Savage, Montana
 BOND, Myrna J., 293 E. Francis St., Ft. William, Ontario, Canada
 BORG, Gary F., 8623 No. 28th Ave., Omaha, Nebraska
 BORG, Jean, 8623 No. 28th Ave., Omaha, Nebraska
 BORTEL, John D., 209 Biddle, Bowling Green, Ohio
 BOURN, Calvin, St. Paul, Minnesota
 BRADBURN, Phyllis K., Rural Route No. 3, Huntington, Indiana
 BRASK, J. Weston, 1002 - 40th Ave. No., Minneapolis, Minnesota
 BREAZE, Georgia, 6325 South Grant St., Littleton, Colorado
 BREYARD, Margaret, 862 Ingleside, Flint, Michigan
 BROWN, Carolyn J., Wolf Point, Montana
 BROWN, Darlene, Wolf Point, Montana
 BROWN, Frank H., 669 Dayton Ave., St. Paul, Minnesota
 BRUMET, James E., 4488 - 296th St., Toledo, Ohio
 BRUNKO, James, Rural Route No. 1, Pequot Lakes, Minnesota
 BRUNNER, Jack, 20 Ohio Ave., Niles, Ohio
 BUDKE, Delmar, 6501 Xerxes No., Minneapolis, Minnesota

CARLSON, Dale L., 528 Rex Blvd., Elmhurst, Illinois
 CARLSON, Linda L., Box 261, Owen, Wisconsin
 CARLSON, Richard E., 651 Main Ave., Louisville 17, Kentucky
 CARLSON, Sharon Ann, 1671 Hewitt, St. Paul, Minnesota
 CHRISMAN, John C., 2700 W. 31st St., Zion, Illinois
 CLIKEMAN, Eva M., 717 Plainview Lane, Albert Lea, Minnesota
 COLLEGE, Eldon J., Mountain Lake, Minnesota
 CONGDON, Renee A., Crane Lake, Minnesota
 CONLEY, Diana M., 1007 Charles Ave., St. Paul, Minnesota
 COOPER, Diane E., Rural Route No. 1, St. Charles, Iowa
 CORPORAAL, Richard, Rural Route No. 2, Anoka, Minnesota
 COSTANZO, Sharon L., 6524 Charles St., Omaha, Nebraska
 COUCHEY, John E., 342 Fuller Ave., St. Paul, Minnesota
 CUTKOMP, Marilyn, 3000 Division, Burlington, Iowa

DALBEY, Nancy, 1000 North Forth, Greybull, Wyoming
 DALE, Esther L., Eldena, Illinois
 DANIEL, Carol M., Hamlet, Nebraska
 DARTER, Jerry, Minneapolis, Minnesota
 DAVIS, Ronald, 474 W. Washington St., Janesville, Wisconsin
 DEAN, Roger, Dayton, Ohio
 DEMMER, Norman F., 1388 Hewitt Ave., St. Paul 4, Minn.
 DENNIS, Bonnie L., R. D. No. 1, Marshallville, Ohio
 DONOHU, Gordon R., P.O. Box 576, Greedley, California
 DORMAN, Sydney L., 1615 Pinoak Dr., Cedar Falls, Iowa
 DOUGHMANN, Kenneth, 1266 Seminary Ave., St. Paul, Minnesota
 DUTTON, Robert E., 1115 Pine St., Boone, Iowa

EAGLEN, William, 11729 Daleside Ave., Los Angeles 47, California
 EASTERDAY, Carol J., 319 E. Maple, Ottumwa, Iowa
 EASTMAN, Darlene, 2172 No. 6th St., No. St. Paul, Minnesota
 EASTMAN, Marlyce, 2172 No. 6th St., No. St. Paul, Minnesota
 EBERLE, Zoe E., Route No. 3, Cedar Rapids, Iowa
 EDWARDS, Marilyn J., Big Lake, Minnesota
 EGGERT, David A., Marengo, Iowa
 ELSBERRY, Eldon E., Royal, Nebraska
 EVANS, Beverly A., 30026 Barjode Rd., Willowick, Ohio
 EVERS, Charlene M., 2170 No. St. Stephens, St. Paul, Minnesota

FALC, Holly S., 9925 S. Emerald Ave., Chicago 28, Illinois
 FANBERG, Raymond, Big Lake, Minnesota
 FARINEL, Beth, 111 Bowers St., Clawson, Michigan
 FERRIER, Priscilla, 322 N. Emmett, Ohio

FARLEY, William, 719 Railway St., Whitefish, Montana
 FEDDERSON, Donna F., Thomson, Illinois
 FENLASON, Donald, St. Cloud, Minnesota
 FORD, Anthony, 1749 Disdale, Louisville, Kentucky
 FORD, Geneva, 1749 Disdale, Louisville, Kentucky
 FORD, Norman, 1749 Disdale Ave., Louisville, Kentucky
 FORSEEN, LaRue, Alwood, Minnesota
 FOSNOW, Sharon R., 5237 - 44th Ave. So., Minneapolis, Minnesota
 FRANKENBERRY, Walter, 13 Pietro St., Morgantown, W. Va.
 FRANZ, Genevieve, Route No. 1, Box 220, Corydon, Indiana
 FRANZ, Geraldine, Route No. 1, Box 220, Corydon, Indiana
 FRANZ, Gwendolyn, Route No. 1, Corydon, Indiana
 FREIHEIT, Donna M., R.F.D. No. 1, Lake City, Minnesota
 FRIESEN, Pat C., Butterfield, Minnesota
 FUCHS, Vergie, 1594 VanBuren, St. Paul, Minnesota

GALVIN, Carroll M., 325 - 4th Ave. S.W., Watertown, So. Dak.
 GATCH, Doris, Rural Route No. 1, Aurora, Indiana
 GILBERT, Marcia E., Route No. 3, Box 29, Osage, Iowa
 GILLELAND, Richard A., 4416 Hillside, Lincoln, Nebraska
 GORDON, Dennis, Sebeke, Minnesota
 GOSS, Clark, Route No. 2, Box 503, Forest Lake, Minnesota
 GOWDY, Judith, Oconomowoc, Wisconsin
 GRAFF, Shirley, Minneapolis, Minnesota
 GRAHAM, Phyllis R., 534 - 12th S.E., Mason City, Iowa
 GRANDY, Beverly H., Foreston, Minnesota
 GRANDY, Elizabeth B., Foreston, Minnesota
 GUNN, LaVon C., Rural Route No. 3, Wadena, Minnesota

HALL, Sharon K., 728 State St., Osage Iowa
 HARDWICK, Barbara J., 1056 Churchill Ave., St. Paul, Minnesota
 HARLEY, Kathleen, Lena, Wisconsin
 HARRIS, Diane, 30 Burwell, Stoney Creek, Ontario, Canada
 HATTIG, Bradford, Laurel, Nebraska
 HEHR, Lester, Kaula, North Dakota
 HEINRICH, Judith A., Wolf Point, Montana
 HELZER, Mary E., 1139 Rose, Lincoln, Nebraska
 HENDRICKSON, Beverly, Route No. 1, Oaco, Minnesota
 HESS, Barbara, 4321 N. Dayton, Chicago 13, Illinois
 HICKLER, Marian J., Monticello, Minnesota
 HILL, David E., 220 - 13th Pl. N.E., Mason City, Iowa
 HOOPER, Leon L., 1363 Bards Ave., St. Paul 13, Minnesota
 HOFFMAN, Robert, Olney Springs, Colorado
 HOWARD, JoAnna, 307 Sherman Ave., Dixon, Illinois
 HUNT, Elizabeth A., 4202 Orchard Pk. Dr., Parma 34, Ohio

INGWERSON, Alice M., 1302 North 43, Lincoln, Nebraska

JACOBS, Joyce, 1227 Hewitt, St. Paul, Minnesota
 JACOBSON, Margaret, 309 So. Maple, Watertown, South Dakota
 JAY, Dona Lou, 317 Ninth St., Boone, Iowa
 JENNINGS, John J., 1124 Lane Place, St. Paul, Minnesota
 JENSEN, Diane L., Rural Route No. 1, Box 113, Tyler, Minnesota
 JENSEN, Joyce, Tyler, Minnesota
 JOHNSON, Beverly, 513 N. 12th St., Mattoon, Illinois
 JOHNSON, David F., 1390 Minnie St., Pt. Huron, Michigan
 JOHNSON, Dennis, 2932 First Ave. So., Minneapolis, Minnesota
 JOHNSON, Jean A., 1947 Eustis St., St. Paul, Minnesota
 JOHNSON, Murie, Marcus, Iowa
 JONES, Louis E., 1361 Englewood, St. Paul, Minnesota
 JONES, Patricia, 1025 Argyle, St. Paul, Minnesota
 JUECKSTOCK, Robert, 5525 Redman Ave., Omaha, Nebraska

KATSCHE, Bertha, Crandon, Wisconsin
 KAUFMAN, Ardath L., Days Acres, Kalispell, Montana
 KELLER, Gene D., Blairburg, Iowa
 KENDALL, David D., 2045 N. 65th St., Omaha, Nebraska
 KERR, Gerald E., R.R. No. 5, Dunfee, Ft. Wayne, Indiana
 KILAND, John W., Orr, Minnesota
 KILLICH, Joann, 5581 Vreeland Road, Ann Arbor, Michigan
 KIM, Ronald Alvin, 6105 - 11th Ave. So., Minneapolis 17, Minnesota
 KLASSEN, Allen, Mountain Lake, Minnesota
 KNIS, Lawrence N., 6700 So. 3rd St., Louisville, Kentucky
 KNOUF, Carol, Winterset, Iowa
 KOLL, Mae, St. Paul, Minnesota
 KUGLIN, Thelma E., R.R. No. 1, Redwood Falls, Minnesota
 KUSANT, Thomas G., 12 Adams St., Pampton Plaine, N. Y.
 KVOLS, Sharon, Laurel, Nebraska

LAIDLAW, Clark, St. Paul, Minnesota
 LAPP, Lela M., 224 Forest Dr., Kalispell, Montana
 LAPP, Kathleen, New York Mills, Minnesota
 LARSON, Jeanette H., Box 42, Baudette, Minnesota
 LARSON, Kenneth, 767 E. Nebraska, St. Paul, Minnesota
 LARSON, Raymond J., Hawick, Minnesota
 LARSON, Sonja, 331 S.W. 6th, Cambridge, Minnesota
 LEHMAN, Joy E., 413 E. 11 Mile Rd., Royal Oak, Michigan
 LEIMBERER, Clyde, Hartwick, Iowa
 LEIMBERER, Mary M., Hartwick, Iowa
 LEWIS, Mark C., 302 Grand Ave., Ottumwa, Iowa
 LINDBERG, Paul, Roman, Montana
 LINDELL, Linda Lee, Oak Park, Minnesota
 LINDQUIST, Anne M., 301 Division St., Buffalo, Minnesota
 LINDSEY, Dianne K., 730 Wolcott St., Flint 4, Michigan

STUDENT DIRECTORY... cont'd

LOBERG, Judith, Hales Corners, Wisconsin
LOPDAHL, Virginia A., Clarkfield, Minnesota
LOMBRE, June, Chicago, Illinois
LORD, Ronald, 221 South 6th St., New Castle, Indiana
LOTTITO, Bonnie J., E. 13018 Mission, Spokane, Washington
LOTTITO, James F., E. 13018 Mission, Spokane, Washington
LOUCKS, Maybelle E., 822 S. Rhode Island, Mason City, Iowa
LOUWENT, Kenneth L., Route 2, Box 234, Mountain Lake, Minnesota
LOWN, Neil, Hewitt, Minnesota
LUTEN, Ruth P., New London, Minnesota
LUNDBERG, Paul A., 1921 W. Eldridge Ave., St. Paul 13, Minnesota
LUTZ, James R., Pine River, Minnesota

McATEE, Melvin E., R.R. No. 2, Aurora, Indiana
McDONALD, Burley, 2801 - 39th Ave. So., Minneapolis 6, Minnesota
McGARVEY, F. Steve, 924 N. Poplar, Newton, Kansas
McELWEE, Donald E., 709 N. Hamline, St. Paul, Minnesota
McKILLIPS, Darwin, St. Paul, Minnesota
McMAHAN, Lynn M., 3190 E. Dodge Rd., Clio, Michigan
MAIN, Dixon H., 335 - 36th Ave. N.E., Minneapolis 18, Minnesota
MALM, Judith Mae, 505 - 9th St., Mt. Lake, Minnesota
MALONE, Beverly, 8 - 4th St., S.E., Watertown, South Dakota
MALONE, Clifford D., 8 - 4th St., S.E., Watertown, South Dakota
MATSON, Carolyn L., 1804 North 4, Grand Forks, North Dakota
MATSON, Josephine, Route No. 2, Clear Lake, Wisconsin
MATTHEWS, John F., 4951 Jersey Ave. No., Minneapolis, Minnesota
MAXWELL, Robert S., 6325 Knox, Lincoln, Nebraska
MEERDINK, Keith W., Orchard, Iowa
MERTZ, Sheryl L., 154 Buttonwood, Bowling Green, Ohio
MEIER, Carol E., 707 Bellinger, Eau Claire, Wisconsin
METCALF, Joanna, 26 Lindgren Ave., Vermillion, South Dakota
MICKELSON, Jacqueline, 838 Leroy, Muscatine, Iowa
MILLER, Alice J., 1511 Henry St., Pekin, Illinois
MILLER, Lorraine M., 777 Ontario St., Beamsville, Ontario, Canada
MILLER, Ruth F., 1317 Englewood, St. Paul, Minnesota
MING, Beverly, Box 614, Glendive, Montana
MONSON, Roger, 816 No. Albert, St. Paul, Minnesota
MOELLERING, Philip, Wildrose, North Dakota
MOORE, John, St. Paul, Minnesota
MORNINGSTAR, Carolyn, 3430 North 68th, Lincoln, Nebraska
MORROW, Roger, 2825 S. 41, Lincoln, Nebraska
MORTIMER, Curtis L., 516 Vine St., Eau Claire, Wisconsin

NEAL, Betty J., 322 No. 21 St., Omaha, Nebraska
NELSON, Dennis L., Route No. 2, Box 14, Milaca, Minnesota
NELSON, Marlene B., Clarkfield, Minnesota
NELSON, Philip E., Clarkfield, (R.R. 2) Minnesota
NELSON, Rhoda J., Clarkfield, Minnesota
NICHOLSON, Diane L., 316 - 5th St. S.E., Wadena, Minnesota
NIELSEN, Erik A., 39 Central Ave., Nyack, N.Y.
NOBLE, Sharon R., 1007 Grandview St., Dixon, Illinois
NUCKOLS, D. Bert, St. Paul, Minnesota
NUCKOLS, Birgitta, 419 Herschel, St. Paul, Minnesota
NUCKOLS, Bryce, 419 Herschel, St. Paul, Minnesota
NUCKOLS, Donald B., 3020 Rice, E. 44, St. Paul 17, Minnesota

O'HARA, James W., 7733 Trion Road, Pittsburgh, Pennsylvania
OLSEN, Roger W., Route No. 2, Paynesville, Minnesota
OLSON, James N., Box 478, Hiawatha, Iowa
OLSON, Judith A., 604 - 3rd St. S.W., Staples, Minnesota
OPP, Donald W., 1311 Hewitt, St. Paul, Minnesota
OPP, Lorene M., 808 - 7th St. S.E., Minot, North Dakota
OWENS, Carol L., 435 Pifer St., DuBois, Pennsylvania

PACKER, Phyllis E., 766 Woods, Wheaton, Illinois
PARKER, Judith A., St. Charles, Iowa
PARTINGTON, William, 316 - 2nd Ave. (Eastvale), Beaver Falls, Penn.
PATTON, Carol Sue, 605 Court St., New Castle, Pennsylvania
PAULAT, Martin, Anoka, Minnesota
PHILLIPS, Joel B., 5341 Kay Dr., Monroe, Michigan
PICKARD, Richard V., 6717 Havelock, Lincoln, Nebraska
PIETERSEN, William, 30 Sunny Circle, Mason City, Iowa
PIHL, Charlotte, 1601 So. Cook, Spokane, Washington
PLETINCKS, Constance, 225 Fannie Street, McDonald, Pennsylvania
POAGE, Marilyn R., 1598 Charles, St. Paul, Minnesota
PRUSSNER, Fred M., R.F.D. No. 1, Charles City, Iowa

RADFORD, Gayle T., 1544 N.E. 30th St., Pompano Beach, Florida
RASMUSSEN, Wayne R., 893 Fry St., St. Paul, Minnesota
RAYGOR, Lance J., 531 Pelham Blvd., St. Paul 14, Minnesota
REIGEL, Sally J., R.R. No. 3, Box 171, Marshfield, Wisconsin
RICHARDS, Marilyn J., Beulah Beach, Ohio
RICHTER, Lynn J., 1521 Rialto St., Pittsburgh 12, Pennsylvania
ROBINSON, Darlene L., Route No. 2, Wadsworth, Ohio
ROHLEFETER, Robert, White Sulphur Springs, Montana
ROLAND, Mavis L., Larimore, North Dakota
RONNING, Claudia J., 3533 Dupont Ave. S., Minneapolis, Minnesota
ROWE, Charles, Turtle Lake, Wisconsin
ROY, Helen L., R.R. No. 1, Box 208, Wadena, Minnesota
RUDE, Joyce, 940 Beech St., St. Paul 6, Minnesota

SALEFSKY, Mildred J., 602 Wilson, Green Bay, Wisconsin
SALFRANK, Glenda J., 2023 So. 2nd St., Aberdeen, South Dakota
SAUNDERS, Richard A., 2211 - 13th Ave. So., Minneapolis, Minnesota
SAUVE, Dorothy L., R.D. No. 2, Wadsworth, Ohio
SAUVE, Norman R., Box 63, Flushing, Ohio
SCHMIDT, Karen, Goodrich, North Dakota
SCHMIDT, Walter D., 4643 So. 146 St., Seattle 88, Washington
SCHMOTTER, Judy M., 1565 Alameda St., St. Paul, Minnesota
SCHRIBER, Richard, 5222 Beaver St., White Bear Lake, Minnesota
SCOTT, Bonnie, Chadron, (Box 45), Nebraska
SEELEY, Norma J., 8 Oak Hill Dr., So. St. Paul, Minnesota
SHAW, Mary Jo, Box 21, Robins, Iowa
SHELDEN, Lorraine, 1640 - 14th St., Port Arthur, Texas
SHOWELL, David S., 117 S. Reed St., Denver 26, Colorado
SHULL, Lowell W., 412 E. Winona, St. Paul 7, Minnesota
SJERVEN, David E., 1610 Dayton Ave., St. Paul, Minnesota
SKIFSTAD, Marion V., 2076 N. Victoria, St. Paul, Minnesota
SKOR, Jon, Wildrose, North Dakota
SMITH, Donald, Tracy, Minnesota
SMYTH, Mary L., 3304 - 41st Ave. So., Minneapolis, Minnesota
SNYDER, Donna W., 4505 Rochester Rd., New Brighton, Pennsylvania
SOMMER, Beverly Jean, R.R. No. 2, Box 181, Marshfield, Wisconsin
SPURLIN, Clyde, Nevis, Minnesota
STEIN, Karen-Jo, North Shore Dr., Eau Claire, Wisconsin
STENLUND, Gary, 2442 Rice St., St. Paul, Minnesota
STENLUND, Carolyn, 2064 Midillon Rd., St. Paul, Minnesota
STERNHAGEN, Alvin L., R.R. No. 1, Box 90, Chadron, Nebraska
STILES, Shirley, 1103 South Third St., Stillwater, Minnesota
STRICK, John L., 4135 - 41st Ave. So., Minneapolis, Minnesota
STUCK, Robert K., 3101 Lindberg Blvd., Dayton, Ohio
STUMBO, Delores J., Box 466, Okaloosa, Iowa
SUNBERG, Dennis E., Route No. 4, Box 190, Little Falls, Minnesota
SUTTON, Carl, Hopkins, Minnesota
SWANSON, Douglas, 3142 Colfax Ave. So., Minneapolis 8, Minnesota
SWANSON, William W., 3142 Colfax So., Minneapolis 8, Minnesota

TANNER, Merton W., 779 N. Albert, St. Paul, Minnesota
TAYLOR, Nila LaRue, 4051 Brunswick Ave. N., Minneapolis 22, Minnesota
THOMAS, E. (Kitty), 3849 N. Odell Ave., Chicago, Illinois
TIESZEN, Leonard J., 415 - 16th St. W., Billings, Montana
TIMMONS, Peter D., R.R. No. 1, Sullivan, Illinois
TOAVS, Gary T., St. Ignatius, Montana
TONSFELDT, Sandra J., R.R. No. 2, Woodward, Iowa
TUTTLE, Dean, Grand Rapids, Minnesota
TWIST, Earl, Manning, North Dakota

ULRICH, Kenneth H., Winside, Nebraska
UNRUH, Dorothy, 1718 Bowen Ave., Bismarck, North Dakota

VALENTINE, Diana K., 9283 Beard Rd., Avoca, Michigan
VAN RAVENHORST, Everna, Mankato, Minnesota
VISCHER, Harold, 1694 Como Ave., St. Paul, Minnesota
VOIGTLANDER, William, Shell Lake, Wisconsin
VOLSTAD, Ruth, 1512 W. Idaho, St. Paul, Minnesota

WALKER, Mark, 2916 N.W. 9th, Oklahoma City, Oklahoma
WANGEN, Viola, Summit, South Dakota
WATTS, Willie, 6721 Perry Ave. No., Minneapolis, Minnesota
WAYLAND, Richard L., W 733 Augusta, Spokane, Washington
WEBSTER, Judith M., 703 Woodland, Crookston, Minnesota
WEIGOLD, Joann, Mt. Lake, Minnesota
WELK, Karen B., 831 No. Howell St., St. Paul, Minnesota
WELK, Madelon, 831 N. Howell, St. Paul, Minnesota
WENNINGER, Paul W., 396 W. Eldridge, St. Paul, Minnesota
WENTWORTH, Sylvia, 1884 E. Montana, St. Paul, Minnesota
WERNBERG, 207 Hollister Ave., Rockford, Illinois
WERNER, Irene, Appleton, Wisconsin
WESTBY, Gloria G., Box 136, Nevis, Minnesota
WHEAT, Robert H., Charles City, Iowa
WHITE, Donald G., Vermdale, Minnesota
WHITE, Linda L., 121 W. McKinley, Libertyville, Illinois
WHITE, Sharon J., 820 N. Albert, St. Paul, Minnesota
WICKSTROM, Linda L., 1834 Lake St., St. Paul 13, Minnesota
WIENKE, Darald A., 5237 Edgewood Ave. N., Minneapolis, Minnesota
WILLIAMS, Caryn J., 2810 First Ave., Hibbing, Minnesota
WILLIAMS, Richard D., 912 Inverness Rd., Chicago, Illinois
WILLIAMS, Richard L., 4532 New Road, Youngstown, Ohio
WILLIAMS, Robert W., 1242 Crawford Dr., Billings, Montana
WILSON, John, 712 Hiawatha St., Minot, North Dakota
WISSESTAD, Judith A., Route No. 2, Sparta, Wisconsin
WOLDSTAD, John E., Arlee, Montana
WOLDSTAD, Lois, Kalispell, Montana
WOOD, Bruce, 587 Grand, St. Paul, Minnesota
WOOD, Linda C., 3712 Outer Loop, Louisville, Kentucky
WYMORE, Dennis H., 3254 R Street, Lincoln, Nebraska

YEATS, Mary K., 2045 No. 65th Ave., Omaha, Nebraska
YOUNG, JoAnn, 7601 Folk Ave., Maplewood 17, Missouri
YOUNG, John, 7601 Folk Ave., Maplewood 17, Missouri
YOUNG, MaryAnn V., Route 1, Box 193, Wadena, Minnesota
YOUNG, Raymond, 1078 No. Dale, No. 7, St. Paul, Minnesota

ZACHARIASON, Judith, Hitterdal, Minnesota

