

Shield 1962

St. Paul Bible College
St. Paul, Minnesota
Volume XXIV

Editor: ELIZABETH GULBRANSON
Photographer: DAVID YEATS



The winding Mississippi River and the gleaming railroad tracks take us into the heart of the city of St. Paul, named in honor of the New Testament Apostle. In this center of manufacture and trade we find the St. Paul Bible College, a college where students and faculty alike are concerned with the development of Christian character and witness.



The theme for this year's annual is taken from the words of St. Paul to the young minister, Timothy—"... he shall be a vessel unto honor, sanctified, and meet for the master's use, and prepared unto every good work." II Timothy 2:21. The door of the college is open for students who desire to prepare themselves for the service of God as His chosen vessels.



Oh, Master take this shapeless clay,
And form it now to thy design.
We cannot know or choose the plan;
We simply yield our wills to thine.

Contents

Dedication	6
Administration	9
Classes	23
Campus Life	47
College Service	85
Advertisers	105





MR. JOSEPH M. TEWINKEL, Jr.

"A vessel meet for the Master's use and prepared unto every good work." well describes Mr. Tewinkel who, since his arrival at the St. Paul Bible College, has shown a willingness and enthusiasm to serve in all areas of college life. The college athletic program has been greatly expanded under his guidance. Students individually and as classes have found in him an excellent advisor and friend as he has served in the capacity of both dean of men and college class advisor. He and his wife Rae Ann have opened their home to students who have found there a warm and truly Christian atmosphere. Above all else he is a teacher. It is impossible to sit in any of his classes and not catch a spark of the enthusiasm that he has for his subject. He makes the word teacher come alive in its highest and best sense. To him we are proud to dedicate our 1962 Shield.



A Teacher
is born





Thus form the clay upon thy wheel,
To make a vessel flawless, whole;
A chosen vessel used by thee,
And subject to divine control.

Administration

Faculty	14
Staff	18



*"... a chosen
vessel unto me, to
bear my name . . ."*
Acts 9:15



Dear members and friends of the St. Paul Family:

As the wheel of time turns tomorrow into yesterday our world is being reshaped by "explosions", political crises, technological changes and social upheavals.

We have come to a time that is more than a period of uncertainties; it is a choice of risks measured in megatons of disaster.

Nevertheless, we believe that it is God the Master Potter who sits at the turning wheel with the earth in His sovereign hand. He it is who formed it first, and although it is broken and marred, He will finally fashion it according to His own design—Oh blessed hope!

Harry T. Hardwick
Harry T. Hardwick
President



Standing: Mr. Charles Eumurian, St. Paul, Minnesota; Rev. James Davey, St. Paul, Minnesota; Mr. Fred Sorensen, St. Paul, Minnesota; Rev. James Cunningham, Lincoln, Nebraska; Mr. Herbert Simmons, Hiawatha, Iowa; Rev. Lester Kim, Minneapolis, Minnesota.

Seated: Senator C. R. Thiessen, Lambert, Montana; Rev. Harry Jueckstock, Omaha, Nebraska; Rev. Carl Volstad, St. Paul, Minnesota; Dr. Harry Hardwick, St. Paul, Minnesota; Mr. Stewart Elmslie, Minneapolis, Minnesota.

Rev. Elmer Fitch, Chicago, Illinois (not pictured).



Rev. Carl Volstad
District Superintendent
Board Chairman



Rev. Leo Berreth
Assistant District Superintendent

College Board



JOSEPH C. WENNINGER, JR., B.A., M.A.
Vice-President
Dean of Education

CHARLES W. SHEPSON, B.S.
Dean of Students



FRANCES D. DECKER, B.R.E.
Associate Dean of Students



MERTON W. TANNER, B.A., M.A., B.D., TH.M.
Registrar



VIRON O. MILLER
Treasurer and Business Manager

CHRISTIAN C. HAINLEN
Director of Public Relations





MARVIN W. ANDERSON, B.A., B.D.
Instructor in Greek



THEODORE BERGMAN, B. MUS.
Prof. of Piano and Organ



LUCILLE M. BROWN, B.S., M. MUS.
Chairman of Music Dept., Professor of Music



HAROLD T. BRUNDIN, B. MUS.
Professor of Voice



RICHARD CARLSON
Instructor of Physical Education



WILLIAM W. CONLEY, B.S. MISSIONS
Chairman of Missions Dept.
Instructor in Missions



RICHARD A. FLEGLE, B. MUS.
Assistant Professor of Brass Instruments

Faculty



JOHN F. GATES
B.T.H., B.D., Th.M., S.T.D.
Professor of Bible and Philosophy



CAROLYN M. GREENE, B.A., M.A.
Assistant Professor of Speech and English



GORDON P. HOWELL, B. MUS.
Associate Professor of Music



WILLIAM LOCK, B. MUS., M. MUS.
Instructor in Music, Voice, and Piano



JAMES R. MASON, B.A., B.D.
Instructor in Bible



OAKLIE MAE MUCK, B.R.E., B.A.
Instructor in World Literature



ADDIE B. RAINES, A.A., B.R.E., M.A.
Librarian; Professor of Christian Education

Faculty



STANTON W. RICHARDSON, B.S., M.A.
Director of Counseling; Professor of Bible
and Theology



DONALD L. RIGGEN, B.A.
Instructor in Remedial English



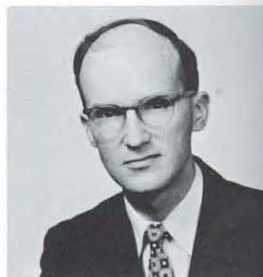
CLAUDE E. STIPE, B.A., M.A.
Professor of Linguistics and Anthropology



JOSEPH M. TEWINKEL, JR.,
B.A. B.T.H.
Director of Athletics; Assistant
Professor of Bible, History, and Greek



DONALD J. TROUTEN, B.T.H., M.A.
Chairman of Christian Education Dept.;
Professor of Christian Education,
Psychology, and Sociology



RICHARD R. WALTERS, B.S., M.A.
Assistant Professor of Zoology and Geology

Faculty



"Did you hear that story
about the man who . . ."

Teachers in Action



"It still is an hypothesis,
yet most scholars ac-
cept . . ."



"Now the characteristics
of a six-year-old are . . ."



"Sharon, was that your
file scattered in the hall?"



"It's just a case of trans-
planted ethnocentrism."



"Well, isn't that true of
us all."



"The critics adhere to the
following interpretations."



"And here we have . . ."



"Yes, Ron, is your com-
ment pertinent? We're al-
most out of time."



Mary Kurrasch
Secretary to President



Estella Reich and Eleanor Anderson
Secretaries to Registrar



Janet Zwickey
Secretary to Vice-President and
Academic Dean



Frances Staley
Secretary to Treasurer



Carol Pennington
Secretary to and Assistant Director
of Public Relations



June Smith
Secretary to District Superintendent



Carolyn Dean
Secretary of Music Department



Ruth M. Carlson
Secretary to Christian Service

Staff



Viola Wangen
College Nurse

JoAnn Sether
Receptionist and Head Switchboard Operator



Lola Walker
Snack Shop Manager



Edna Teeter and Audrey Cornforth
Bookstore Manager and Assistant



Staff

Robert Hahn, Superintendent of Buildings and
Grounds.



Gladys Quaderer, Head Cook; Viola Peterson
and Athrea Hedrick, Assistant Cooks.



Eva Heikkinen, Hostess and Housekeeper.



Obed Walker, Assistant Superintendent of
Buildings and Grounds.

Staff



The clay is quickly formed and set;
The vessel grows beneath thy hands.
We, too, are formed by pressures sent;
Yet love accompanies thy demands.

Classes

Seniors	24
Juniors	28
Sophomores	32
Freshmen	36
Unclassified	44
Second	
Semester	45



*"... a vessel
unto honor, sancti-
fied, and meet for the
Master's use, and prepared
unto every good work."*

II Timothy 2:21



DAVID YEATS
Omaha, Nebraska
B.R.E. with Ch. Mus.
Class Officer, President 2, 4; Missionary Cabinet, President 3; Shield Staff, Photographer 2, 3, 4; Student Council 1, 2, 4; Choral Club 1, 2, 3.



REV. CHARLES SHEPSON
Senior Class Advisor



LAUREL MATHESON
Wyoming, Minnesota
B. MUS. IN CH. MUS. WITH CHR. ED.
Class Officer, Vice-President 4; Choral Club, Accompanist 1, 2, 3, 4; Dorm Council 4; Student Council, Secretary 4; Missionary Cabinet, Corresponding Secretary 4.



ELIZABETH GULBRANSON
St. Paul, Minnesota
B.S. IN MISSIONS
Class Officer, Secretary 4; Island World Prayer Band, Secretary-Treasurer 3; P. M. K. Club 4; Shield Staff, Editor 4.



GERALD KLAUDT
Arlee, Montana
B.S. IN MISSIONS
Class Officer, Treasurer 3, 4; President Student Council 2; Shield Staff 1, 2, 3.

Seniors



BONNIE ASPETER
Exeland, Wisconsin
B. MUS. IN CH. MUS. WITH CHR. ED.
Choral Club 1, 2, 3, 4; Home Missions Prayer Band, Vice-President 2, Secretary 2; Fishers of Men, Secretary 2; Speech Club, "A Man Called Peter" 1, "Telegram From God" 2.



GORDON BARKER
Osage, Iowa
B.S. IN MISSIONS
Missionary Cabinet, President 4; South American Prayer Band 1, 2, 3, 4; Basketball 3, 4.



DARLENE BROWN
Wolf Point, Montana
B. MUS. IN CH. MUS. WITH CHR. ED.
Choral Club 1, 2, 3, 4; President 4; Student Council 3, 4; Secretary 3; Dorm Council 2; Fishers of Men 1; Island World Prayer Band, Secretary 2; Summer Tour 2, 3; Youth Conference Program Committee 2, 3, 4.



GLORIA BROWN
Farmington, Minnesota
B.R.E. WITH CH. MUS.
Near East India Prayer Band, Secretary 2, 3, Vice-President 4.



RUTH COX
Brunswick, Ohio
GENERAL DIPLOMA
Shield Staff, Assistant Treasurer 1; Girl's Choir, Librarian 1; Fishers of Men 1; African Prayer Band 1; South American Prayer Band 2, 3, 4; Co-Laborers 3, 4.



SHIRLEY ELWOOD
Cambridge City, Indiana
B.R.E.
India Prayer Band, Secretary 2; Indo-China Prayer Band, Secretary 4.



LOIS FREDERICK
Cedar Rapids, Iowa
GENERAL DIPLOMA
Shield Staff, Copy-Editor 2, 3; Cheerleader 2; Fishers of Men, Librarian 1; World Prayer Band 1; Latin America Prayer Band 2.

Class of '62



GARY FREEMAN
Fremont, Nebraska
B.S. IN MISSIONS
Class Officer, President 3; Missionary Cabinet, Treasurer 3; Student Council 3, 4, Vice-President 4.



MARLENE GERSTEL
Canonsburg, Pennsylvania
B.S. IN MISSIONS
Missionary Cabinet, Vice-President 4; Choral Club 1, 2; Dorm Council 2; Fishers of Men 1; South American Prayer Band 1, 2, 3, 4, Vice-President 3.



DOUGLAS LEIGHTNER
Portland, Oregon
B.A. IN CH. MUS.
Choral Club 1, 2, 3, 4, Librarian-Treasurer 2; World Prayer Band, Treasurer 1, President 1.



CLIFFORD OLSON
Minneapolis, Minnesota
B.S. IN MISSIONS
African Prayer Band, President 2, 3.



NEIL PARDUN
Blairsburg, Iowa
B.A. IN BIBLE
Class Officer, Treasurer 3; Missionary Cabinet, Treasurer 4; Latin American Prayer Band 1, 2, 3, 4, President 1.



ANNE PENDELL
Columbus, Ohio
B.S. IN MISSIONS
North American Indian Prayer Band 1; Indo-China Prayer Band 2, 3, 4, Secretary 2, Treasurer 3; Girl's Choir 1; Shield Staff, Assistant Copy Editor 4.



HAZEL RAND
Minneapolis, Minnesota
B.S. IN MISSIONS
Class Officer, Treasurer 1, Vice-President 2; World Prayer Band, President 2; Missionary Cabinet, Dorm Council 3; Assistant Dean of Women 3, 4.



CARROLE SCHAEFER
McAllen, Texas
B.S. IN MISSIONS
Missionary Cabinet, Corresponding Secretary 4; South American Prayer Band 1, 2, 3, 4, Secretary 2; Fishers of Men 1, 2.



CAROL SCHOCK
Wolf Point, Montana
B.R.E. WITH CH. MUS.
Missionary Cabinet, Corresponding Secretary 3; Girl's Choir 1, 2, 3, 4, Secretary 1, Vice-President 2, President 3; Student Council 4; Youth Conference Program Committee 2, 3, 4; Dorm Council, Secretary 2, President 4; Fishers of Men 1; Orchestra 1; Basketball 1, 2, 3, 4.



JON SKOR
Wild Rose, North Dakota
B.R.E.
Student Council, President 4; Basketball, Student Manager 3, 4; World Prayer Band 1, 2; North American Indian Prayer Band 3, 4; Fishers of Men 1; Pep Band 1, 2; Orchestra 1; Night Watchman 2, 3, 4.



GARY STENLUND
Princeton, Minnesota
B.A. IN BIBLE
Class Officer, Treasurer 2; Shield Staff, Sports Editor 3; Choral Club 1, 2, 3, 4, Treasurer 2, Octette 2, 3, 4, Quartette 2, 3, 4, Trumpet Trio 3, President 4; Dorm Council 3; Basketball 1, 2, 3; Missionary Cabinet, Financial Secretary 3.



JAMES TREECE
Minneapolis, Minnesota
B.R.E.
Student Council, President 4.



NANCY WALKER
Oklahoma City, Oklahoma
B.R.E.
World Prayer Band 1, 2, 3; Indo-China Prayer Band 4; Youth Conference Committee 2, 3.



JOANNE WETMORE
Viborg, South Dakota
GENERAL DIPLOMA
North American Prayer Band, President 1.

Seniors

Class of '62



CLASS OFFICERS — Top: Mr. Joseph Tewinkel, Advisor; Vaughn White, V. Pres.; Bruce Wood, Treas.; Darwin McKillips, Pres; Rhoda Nelson, Sec.



REVA ADEY
Pine River, Minnesota



DAVID ANDRESEN
Beaver, Pennsylvania



RUTH ARP
Owen, Wisconsin



JOSEPH ARTHUR
Hamilton, Ohio



PHYLLIS BATDORF
Verndale, Minnesota



ALVIN BIBER
St. Paul, Minnesota



DELINDA BISHOP
Newton, Iowa



GARY BORG
Omaha, Nebraska



JOAN BORG
Omaha, Nebraska



SHARON COSTANZO
Omaha, Nebraska



RONALD DAVIS
Janesville, Wisconsin



WILLIAM FARLEY
Whitefish, Montana



GEORGE FOWLE
Fremont, Nebraska



WALTER FRANKENBERG
Morgantown, W. Virginia



DENNIS GORDON
Sebek, Minnesota



DIANE HARRIS
Stoney Creek, Ontario



BRADFORD HATTIG
Laurel, Nebraska



JOHN JENNINGS
St. Paul, Minnesota



LOUIS JONES
Turtle Creek, Pennsylvania



PATRICIA JONES
Turtle Creek, Pennsylvania



GERALD KERR
Fort Wayne, Indiana



JOANN KILLICH
Ann Arbor, Michigan



GLENA KRATZER
St. Paul, Minnesota



JEANNETTE LARSON
Beaudette, Minnesota



MARY LEIMBERER
Hartwick, Iowa



DAVID LOBERG
Hales Corners, Wisconsin



MARLYCE EASTMAN
Park Rapids, Minnesota



VIRGINIA EDGELL
Morgantown, W. Virginia

Juniors

Class of '63



RONALD LORD
New Castle, Indiana



CLIFFORD MALONE
Watertown, South Dakota



DARWIN MCKILLIPS
St. Paul, Minnesota



SHARON MERRILL
Marshfield, Wisconsin



JACQUELINE MICKELSON
Omaha, Nebraska



BEVERLY MING
Glendive, Montana



BARBARA MINNICH
York, Pennsylvania



RHODA NELSON
Clarkfield, Minnesota



BERT NUCKOLS
Omaha, Nebraska



BRYCE NUCKOLS
Omaha, Nebraska



JAMES O'HARA
Pittsburgh, Pennsylvania



KATHY OLSON
Cook, Minnesota



RONALD ROHLETTER
Wh. Sulph. Springs, Mont.



LORRAINE SHELLEN
Port Arthur, Texas



DUANE SPILDE
Cedar Rapids, Iowa



TRIXIE STIGERS
Beaverdale, Pennsylvania



SUZANNE THOMPSON
St. Paul, Minnesota

Juniors



CAROL VALDER
Bethel, Minnesota



VIOLA WANGEN
Summit, South Dakota



MADOLON WELK
St. Paul, Minnesota



SYLVIA WENTWORTH
St. Paul, Minnesota



DONALD WHITE
Verndale, Minnesota



VAUGHN WHITE
Dayton, Ohio



BRUCE WOOD
St. Paul, Minnesota



JOANN YOUNG
Maplewood, Missouri



Bryce disagreeing again.



Imagine, a junior learning to color!

Class of '63



Class Officers: Top to bottom,
Mr. Mason, Advisor
Paul Lindburg, Treasurer
David Baynes, Vice-President
John Matthews, President
Doris Gatch, Secretary



VIRGIL ADAMS
Lake Alfred, Florida



CAROL ARANT
Omaha, Nebraska



DEAN BACHER
Oil City, Pennsylvania



SHAREN BAILEY
Renville, Minnesota



DAVID BALTON
Bloomfield, New Jersey



MARION BAUMAN
Mino, North Dakota



DAVID BAYNES
Beulah Beach, Ohio



BONNIE BOLSTAD
Savage, Montana



ROGER DEAN
Elgin, Illinois



ZOE EBERLE
Cedar Rapids, Iowa



DONNA FEDDERSEN
Thomson, Illinois

Sophomores



ROBERT HOPKINS
Fremont, Nebraska



PATRICIA HOUSDEN
Aliquippa, Pennsylvania



JOYCE JENSEN
Tyler, Minnesota



BERTHA KATSCHKE
Crandon, Wisconsin



DAVID KAUFMAN
Stillwater, Minnesota



EVELYN KNUDSEN
Cartwright, North Dakota



GLADYS KNUDSEN
Cartwright, North Dakota



PAUL LINDBURG
Ronan, Montana



JOHN MATTHEWS
Minneapolis, Minnesota



JOANNA METCALF
Vermillion, South Dakota



JUDITH NICHOLS
Corry, Pennsylvania



GEORGIANA FRANTIK
Downers Grove, Illinois



DORIS GATCH
Aurora, Indiana



LINDA HALL
Louisville, Kentucky



DELORES HANSON
Leader, Minnesota



SUANNA HARPER
Louisville, Kentucky



BEVERLY HENDRICKSON
St. Paul, Minnesota

Class of '64



GERALD NICHOLSON
Osakis, Minnesota



BIRGITTA NUCKOLS
Omaha, Nebraska



DONALD OPP
Minot, North Dakota



GERALD OPP
Minot, North Dakota



MARTIN PAULAT
St. Paul, Minnesota



CHARLOTTE PIHL
Spokane, Washington



EUGENE POST
Mount Vernon, New York



WAYNE RASMUSSEN
St. Paul, Minnesota



FAYE REYNOLDS
Superior, Wisconsin



DOROTHY ROBINSON
Wadsworth, Ohio



CHARLES ROWE
Turtle Lake, Wisconsin



JOYCE RUDE
Stillwater, Minnesota



BONNIE SCOTT
Chadron, Nebraska



NORMA SEELEY
St. Paul, Minnesota



MARY JO SHAW
Robins, Iowa



LOWELL SHULL
Cedar Rapids, Iowa



LORETTA STANTON
Kalispell, Montana

Sophomores



ROBERT STUCK
Dayton, Ohio



DENNIS SUNDBERG
Little Falls, Minnesota



GEORGIA SWENSON
Backus, Minnesota



THOMAS TAYLOR
Hamilton, Ohio



KENNETH ULRICH
Winside, Nebraska



JOHN WILSON
Minot, North Dakota

NOT PICTURED

BURLEY McDONALD
Minneapolis, Minnesota

Voices reflect the Christmas Spirit.



All hands were in the pan on freshmen retreat.



"While we were being persecuted by the ruler . . ."



Class of '64



Class Officers: Top to bottom,
Mr. Trouten, Advisor
Dennis Johnson, President
Jack Hirons, Vice-President
Sharon Allwine, Secretary
Muriel Johnson, Treasurer



LARRY ADEY
Grand Rapids, Minnesota



SHARON ALLWINE
Omaha, Nebraska



MARIE ANDERSON
Maple Plain, Minnesota



RALPH ANDERSON
Houston, Minnesota



SUZAN ANDERSON
St. Paul, Minnesota



ANDREA ASPSETER
Exeland, Wisconsin



NEIL BAKER
Chicago, Illinois



JERRY BANEK
McLaughlin, South Dakota



RENEE BARTON
Almena, Wisconsin



GAYLE BATTON
Morgantown, W. Virginia



EDNA BECK
Owen, Wisconsin

Freshmen



SHARON BENHAM
Minot, North Dakota



TERRENCE BENNETT
Fort Wayne, Indiana



DANIEL BLACK
Helena, Montana



KAREN BLACK
Helena, Montana



KENNETH BRACHMAN
Sheboygan Falls, Wisconsin



GEORGIA BREAZE
Littleton, Colorado



MARGARET BREVARD
Flint, Michigan



NANCY BUCK
Belgrade, Montana



JANA LEE BURKHOLDER
Orrville, Ohio



RICHARD CARLSON
Louisville, Kentucky



RITA CLAUSSEN
Rock Island, Illinois



DIANA CONLEY
St. Paul, Minnesota



MARILYN CUTKOMP
Burlington, Iowa



CAROL DANIEL
Hamlet, Nebraska



GERRY DEAN
Peru, Illinois



DAVID DRUMMOND
Irrington, Nebraska



LARRY DUNN
Canal Fulton, Ohio

Class of '65



KAREN ERICKSON
Malta, Montana



DONALD FENLASON
St. Cloud, Minnesota



KAROLYN FENLASON
St. Cloud, Minnesota



NORMAN FORD
Louisville, Kentucky



GERALDINE FRANZ
Louisville, Kentucky



DONNA FREDRIKSON
St. Paul, Minnesota



WILLIAM GEARHART
Battle Lake, Minnesota



JUDITH GOWDY
Oconomowoc, Wisconsin



SHIRLEY GRAFF
Minneapolis, Minnesota



DOROTHY HALL
Louisville, Kentucky



KATHLEEN HARLEY
Lena, Wisconsin



ROSA LEE HEPNER
Warroad, Minnesota



BARBARA HESS
Chicago, Illinois



STANLEY HULTBERG
Monticello, Minnesota



JOYCE JACOBS
St. Paul, Minnesota

Freshmen



DONNA JAY
Boone, Iowa



DENNIS JOHNSON
Minneapolis, Minnesota



MURIEL JOHNSON
Marcus, Iowa



ROBERT JUECKSTOCK
Omaha, Nebraska



CAROL KNOUF
Marengo, Iowa



SONJA LARSON
Cambridge, Minnesota



JOY LAURIN
International Falls, Minnesota



GARY LAUTT
Appleton, Minnesota



KATHLEEN LAPPI
New York Mills, Minnesota



KENNETH LARSON
St. Paul, Minnesota



JOY LEHMAN
Royal Oak, Michigan



CLYDE LEIMBERER
Hartwick, Iowa



JUDITH LOBERG
Hales Corners, Wisconsin



JUNE LOMIRE
Milwaukee, Wisconsin



DIANN LOW
Osage, Iowa

Class of '65



BEVERLY MALONE
Watertown, South Dakota



CYNTHIA MOELLING
Wild Rose, North Dakota



GAYLENE MORRISON
Omaha, Nebraska



MARLENE NELSON
Clarkfield, Minnesota



ERIC NIELSEN
Nyack, New York



JOEL PHILLIPS
Monroe, Michigan



FRED PRUESSNER
Charles City, Iowa



LEROY REIBLING
Detroit, Michigan



SALLY REIGEL
Marshfield, Wisconsin



DIANNE REISIG
Savage, Montana



SHIRLEY SCHELL
Belgrade, Montana



LINDA SCHOENHERR
Sauk Rapids, Minnesota



LARRY SEARS
Inglewood, California



MARGARET SHAW
Kodaikanal, South India



DAVID SHOWELL
Denver, Colorado

Freshmen



LAVERNE SMALLEY
Boone, Iowa



DARRELL SMITH
Pittsburgh, Pennsylvania



DONALD SMITH
Tracy, Minnesota



DONN SNYDER
New Brighton, Pennsylvania



IRIS SOMERS
Mattoon, Illinois



SHIRLEY STILES
Stillwater, Minnesota



DELORES STUMBO
Oskaloosa, Iowa



SETH TURNER
Fort Huron, Michigan



DOROTHY UNRUH
Bismarck, North Dakota



KENT VAN WAGNER
Bryan, Ohio



MARK WALKER
Oklahoma City, Oklahoma



RUTH WALL
Frazer, Montana



WILLIE WATTS
Minneapolis, Minnesota



DAVID WENTWORTH
St. Paul, Minnesota



EVANGELINE WERNBERG
Rockford, Illinois

Class of '65



LOY WIGGERS
St. Paul, Minnesota



RICHARD D. WILLIAMS
Westmont, Illinois



RICHARD L. WILLIAMS
Youngtown, Ohio



LOIS WOLDSTAD
Arlee, Montana



PATRICIA WOLFSTELLER
Maple Lake, Minnesota



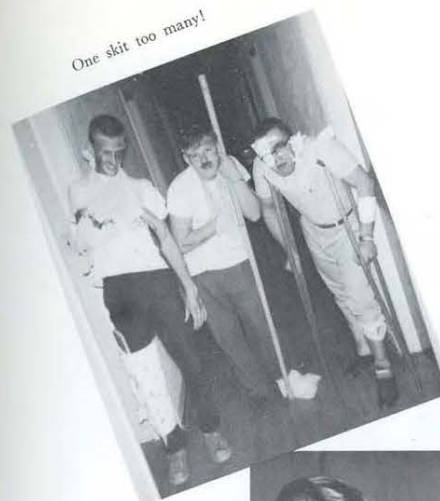
MARY YEATS
Omaha, Nebraska

Camera Shy:

LARRY ANDERSON
GARY BAWDEN
MARK BELL
CALVIN BOURN
EVA CLIKEMAN
CLARK GOSS
JACK HIRONS
MICHAEL MANN
JUSTIN MOELLRING
DEAN MORIN
RICHARD SCHRIEBER
DAVID SPENCER
ALAN TAYLOR
DARALD WIENEKE
ROBERT WILLIAMSON



Freshmen



One skit too many!



Using every spare minute wisely.



Have you found the Islands of Langerhans??



Enthusiastic Carolers.



Oh, the tire-a-tion of it all!

Class of '65



FRANK BROWN
West Alice, Wisconsin



JAMES HUDDLESTON
Clinton, Ohio



SIMON LAHLUM
Minot, North Dakota



MARILYN LAWRENCE
Mansfield, Ohio



CHARLES OLSON
St. Paul, Minnesota



LEOTA NELSON
Creston, Iowa



DIANE RIDDLE
Omaha, Nebraska



RUTH RIDDLE
Funk, Nebraska



RICHARD SAUNDERS
Minneapolis, Minnesota



HAROLD VISCHER
Omaha, Nebraska

Unclassified



Third Row: G. Radford, E. Twist.

Second Row: R. Anderson, D. McElwee, L. White.

First Row: E. Thomas, L. Cain.

Not Pictured: C. Atneosen, J. Brask, D. Budke, J. Darter, K. Doughman, R. Dutton, J. Pardun, B. Reaves, L. Raygor, H. Rischer, N. Stuck, D. Swanson.



All these books?—you'd think I'd been here a year.



Third floor—whew!!

Second Semester



It reaches its full stature now,
 Just gently rounded, full, entire,
 As though to indicate it seems,
 The well turned lives we should desire.

Campus Life

Activities	48
Sports	63
Organizations	74



*"Thou art
 the potter, I am
 the clay. Mold me
 and make me after
 Thy will . . ."*



A welcome cup of steaming coffee on a winter morning — Jan serves in the breakfast line.

As The Day Turns



Chapel—a time of inspiration in the midst of classes.

Igneous, metamorphic, sedimentary—I thought they were just stones.



Somebody loves me after all — I got a letter.

As each day turns from morning to dusk, we are shaped by our activities, our thoughts, our friends, and by the Master Potter who molds our yielded lives for His own glory.

Our cameraman followed Jan Burkholder through the turns of a college day.



Jan, it doesn't work. Sleeping on the books doesn't make it soak through.



Skating is fun, but this makes it exciting.

Afternoon, a good time for research in the library.



How about it? The ice is perfect tonight.

Trying to fly
again, Walt?



Campus Day

The day we turn out in
force and fun to make our
campus shine.

Ken to the rescue—of
windows, that is.



Looking high and low for dust.



Get them really clean, Ron!



Halloween

Our party brought out
unusual and creative tal-
ents for costuming.

Fred and Jerry's
friendly undertaking
service.



Martha and George entertain this year's
All American.



We buried the
map, too!



Who would guess this was LaVerne and
Darrell.





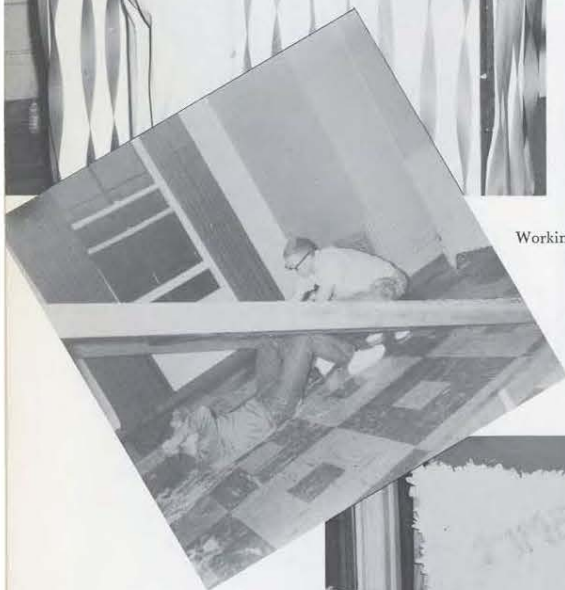
Homecoming

Who could resist such a lovely sales-girl?



From far and near, Alumni returned to their Alma Mater to receive a most gracious welcome. Decorations were evidence that the students had worked hard to make this Homecoming an effective one.

Working hard on the welcome sign, Dave?



Progress developed rapidly until the finished product emerged like this.



The Annual Frolics



"Slave for a day". Betty's services are sold for 50c.



Jeanette and Dennis enjoy their reign as Duke and Duchess of the Shield sponsored "Slave Day".

The royal court.

President Hardwick decides to help the "Shield Army" lassies promote the contest.



The Shield staff gets all spruced up for their introduction to the student body.



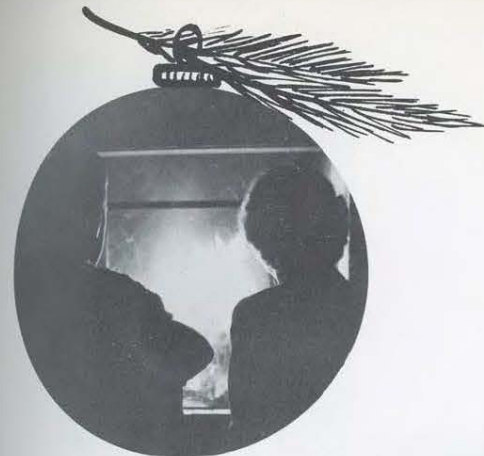
Gerry and Mary await the opening chords of the candlelight concert.

It's Christmas Time

Seth concentrates on his tasty Christmas dinner.



The college choir presents the Christmas candlelight service.



Christmas reflections.



Refreshments — a perfect climax to Open House.

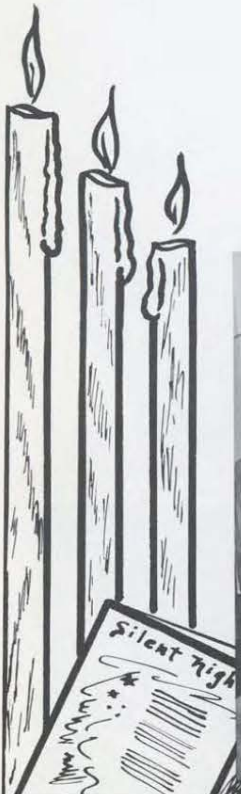
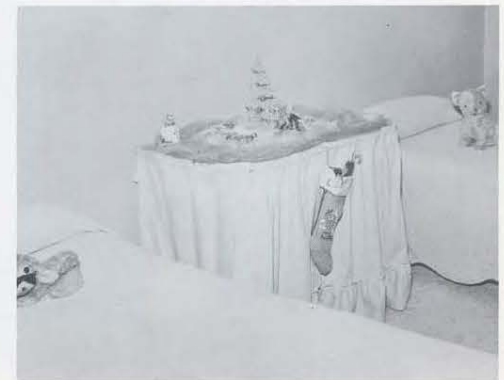


A Carol Sing around the big tree.

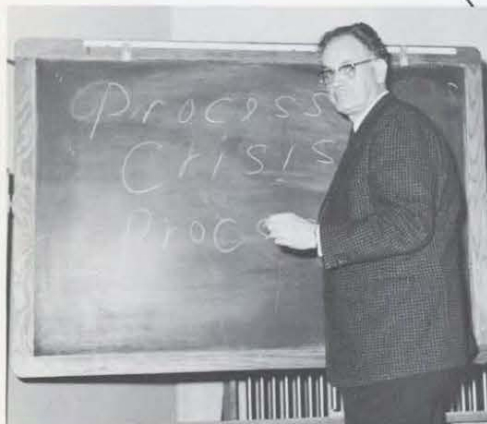
It's 4 A.M.! No wonder Darl is a sleepy angel.



Christmas decorations add to the attractiveness of all the rooms at Open House.



Channels of Blessing



Rev. Harold Sutton found his hours full talking to students who were eager to hear his practical pointers for effective Christian service.



Rev. Homer Williams challenged us to "clean out the ashes" in our spiritual lives in order to receive Christ's fullness.

The irreducible minimum for Christian service is the filling of the Holy Spirit.



Rev. Mel W. Johnson, Vice-President of Youth for Christ International, was our conference speaker.

5th Annual Youth Conference



At the registration table, Charlotte greets them with a smile.

FOR SUCH
A TIME
AS THIS



Paul and Nancy lend a hand getting the mailing out in time to advertise the conference.



Laurel Matheson
Senior Recital
Piano

Jeanette Larson
Soprano



Helmut Rischer
Baritone



Sylvia Wentworth
Soprano



Spring Recitals



Darlene Brown
Senior Recital
Organ

Gerald Kerr
Trumpet



Norma Seeley
Piano



Rhoda Nelson
Piano





Oh no! three exams on the same day.



It looks as though I haven't opened this book since mid-semester.



Come on now, let's get organized.



"... and the cares that infest the day shall fold their tents

A Tale of Toil

How time does fly, and we find ourselves at final exams. This is a time of frustration, concentration, anxiety, and finally relief.

Let's look in on Mark Bell and see how he does it.



Parting is such sweet sorrow?

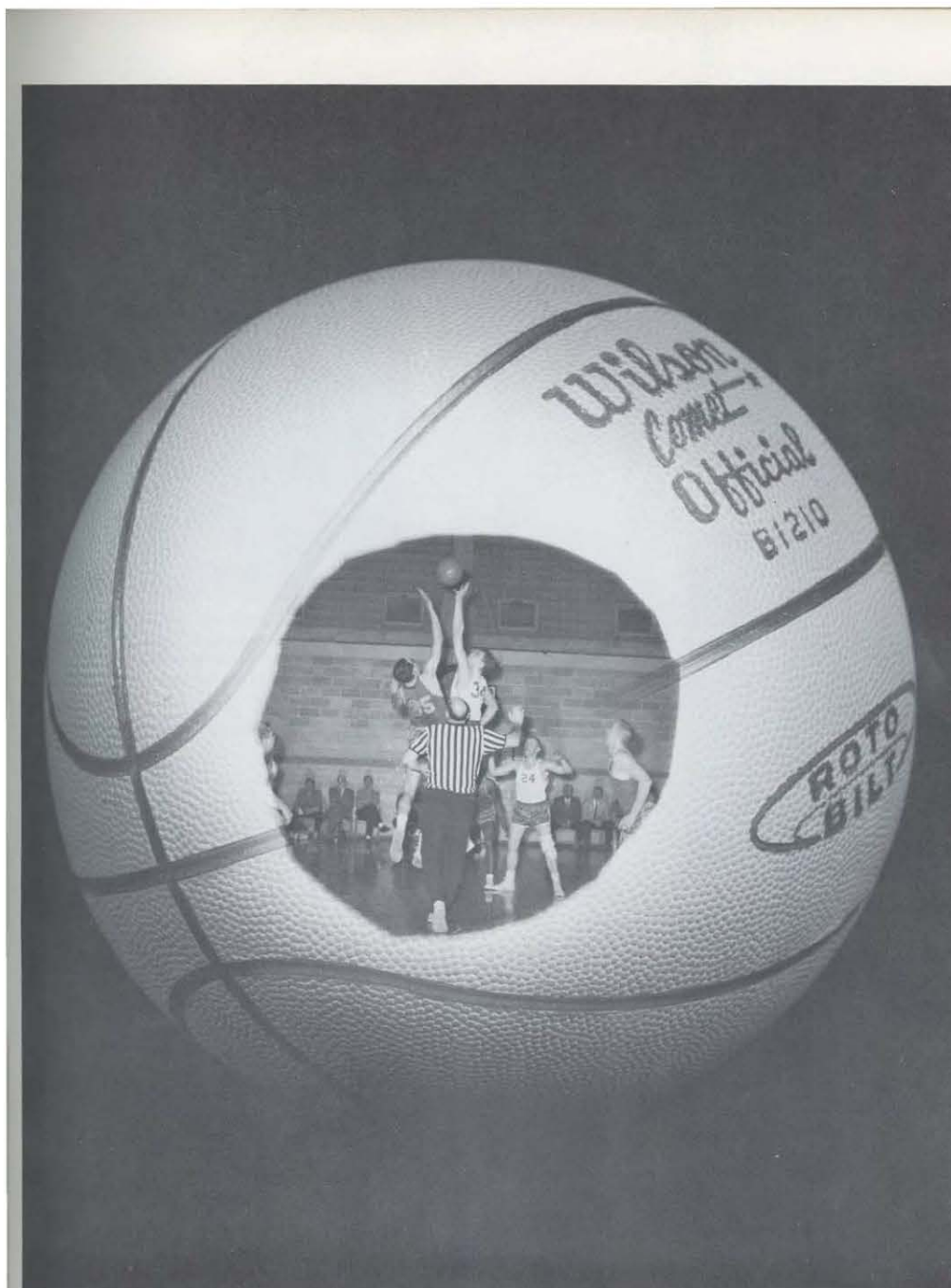
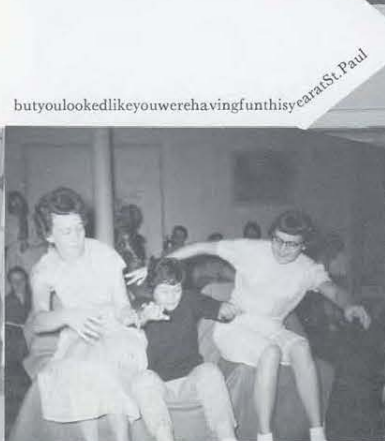


My brain is stimulated, but the reaction is slow.



Methought I heard a voice cry, "Sleep no more!"







Gary Stenlund
Princeton, Minnesota
6'2" Forward



Brad Hattig
Laurel, Nebraska
6' Forward



Gordon Barker
Osage, Iowa
6' Forward



Coach Bill Adam



Lou Jones, Capt.
Turtle Creek, Pennsylvania
6' Guard



Virgil Adams
Lake Alfred, Florida
6' Guard

CRUSADERS



Standing—Left to Right: Coach Bill Adam, Joel Phillips, Ron Davis, Paul Lindburg, Roger Dean, Gary Stenlund, David Baynes, Donald Opp, Rich Williams, Mr. Tewinkel, Athletic Director.

SPBC 54.....	Alumni	64
SPBC 77.....	North Central	73
SPBC 49.....	Dr. Martin Luther	78
SPBC 62.....	Milwaukee Tech.	87
SPBC 63.....	Concordia J. C.	82
SPBC 56.....	Minnesota Bible	59
SPBC 71.....	Northwestern	92
SPBC 60.....	Minnesota Business	61



Kneeling—Left to Right: Jon Skor, Manager, Clifford Malone, Lou Jones, Gordon Barker, Brad Hattig, Virgil Adams, Seth Turner, Michael Mann.

SPBC 63.....	Pillsbury	75
SPBC 58.....	Lutheran Bible	82
SPBC 55.....	Concordia J. C.	71
SPBC 56.....	Northwestern	83
SPBC 71.....	Pillsbury	74
SPBC 57.....	Dr. Martin Luther	75
SPBC 59.....	Minnesota Business	64
SPBC 79.....	North Central	61



Jon Skor, Manager



Seth Turner
Port Huron, Michigan
5'9" Guard



Dick Williams
Lisle, Illinois
5'11" Guard



Cliff Malone
Watertown, South Dakota
6'2" Forward



Roger Dean
Dayton, Ohio
6'3" Center



Al Taylor
New Castle, Indiana
6'3" Center



Lou makes it look easy in practice.



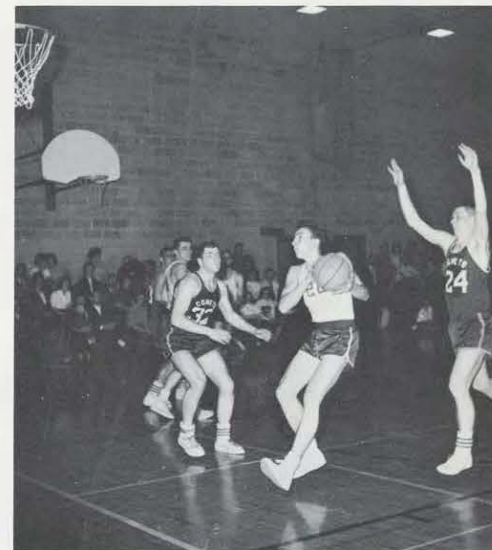
Pardon me, Virg.



Practice makes perfect, and Lou scores.



Virg scores on a jump shot.



Cliff drives for two points.



Roger Bailey takes the tip and the Alumni take the game.



Bev Malone



Carol Schock, Captain



Diane Conley



Dorothy Unruh



Jan Burkholder



Standing, left to right: Sharon Benham, Muriel Johnson, Carol Schock, Barb Hess, Jan Burkholder, Bev Malone, Diane Conley, Jan Barker, Coach.
Kneeling, left to right: Donna Fredrikson, Linda White, Bev Ming, Judy Nichols, Charlotte Pihl, Dorothy Unruh, Vangie Wernberg.



Donna Feddersen



Vangie Wernberg



Judy Nichols



Meg Brevard



Barb Hess



Muriel Johnson



Lois Wolstad

SPBC 19	Alumni 17
SPBC 27	Northwestern 22
SPBC 19	Pillsbury 26
SPBC 26	Northwestern 45
SPBC 16	Pillsbury 26
SPBC 46	Bethel 33
SPBC 29	Bethel 30

Girls' Basketball



Carol scores two against Northwestern.



Murt faces a problem.



Bev Ming



Donna Fredrickson



Sharon Benham



Shirley Schell

Intramurals



Intramural Champs—Standing, left to right: Cliff Malone, Ron Rohletter, Terry Bennett. Kneeling, left to right: Gene White, Capt. Jerry Banek, Dave Showell.



Standing, left to right: Dave Andresen, Capt. Joel Phillips, Ron Davis. Kneeling, left to right: Hoz Vischer, Norm Ford.



Standing, left to right: Stan Hultberg, Paul Lindburg, Capt. Dave Baynes. Kneeling, left to right: Rich Carlson, Don Smith, LeRoy Reibling.



Standing, left to right: Mark Bell, Capt. Perk White. Kneeling, left to right: Fred Pruessner, Bob Jueckstock.



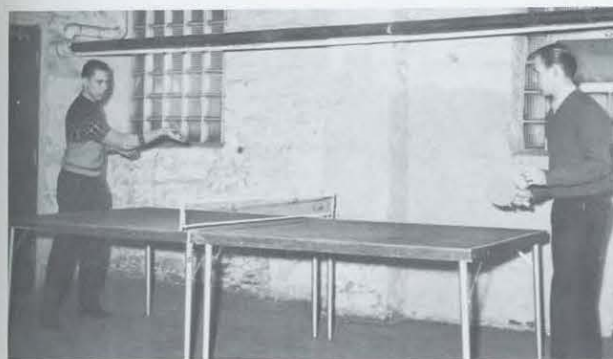
Jump, Terry! Jump!



Cross country team—Standing, left to right: Fred Pruessner, Eric Neilsen, Dennis Johnson, Dave Showell. Kneeling: Capt. Bob Jueckstock, Norm Ford, Stan Hultberg.



The Howells and the Hardwicks enjoy a game.



Ping Pong tourney: Runner-up — Rich Williams, Winner — LeRoy Reibling.



Congratulations, LeRoy.



Bev smiles for the camera.



Mr. Tewinkel congratulates Ron Rohletter, M.V.P. Intramural All-Star



Virg clowns at practice.

Cheer Leaders



Donn Snyder



Gene White



Bev Malone



Kathi Lappi



Edna Beck



Mr. Tewinkel
Athletic Director



Athletic Committee—Left to right: Loretta
Stanton, Bill Farley, Jon Skor, Carol Schock.



Remember the Athletic Banquet and Mr. Tewinkel's sporty jokes?

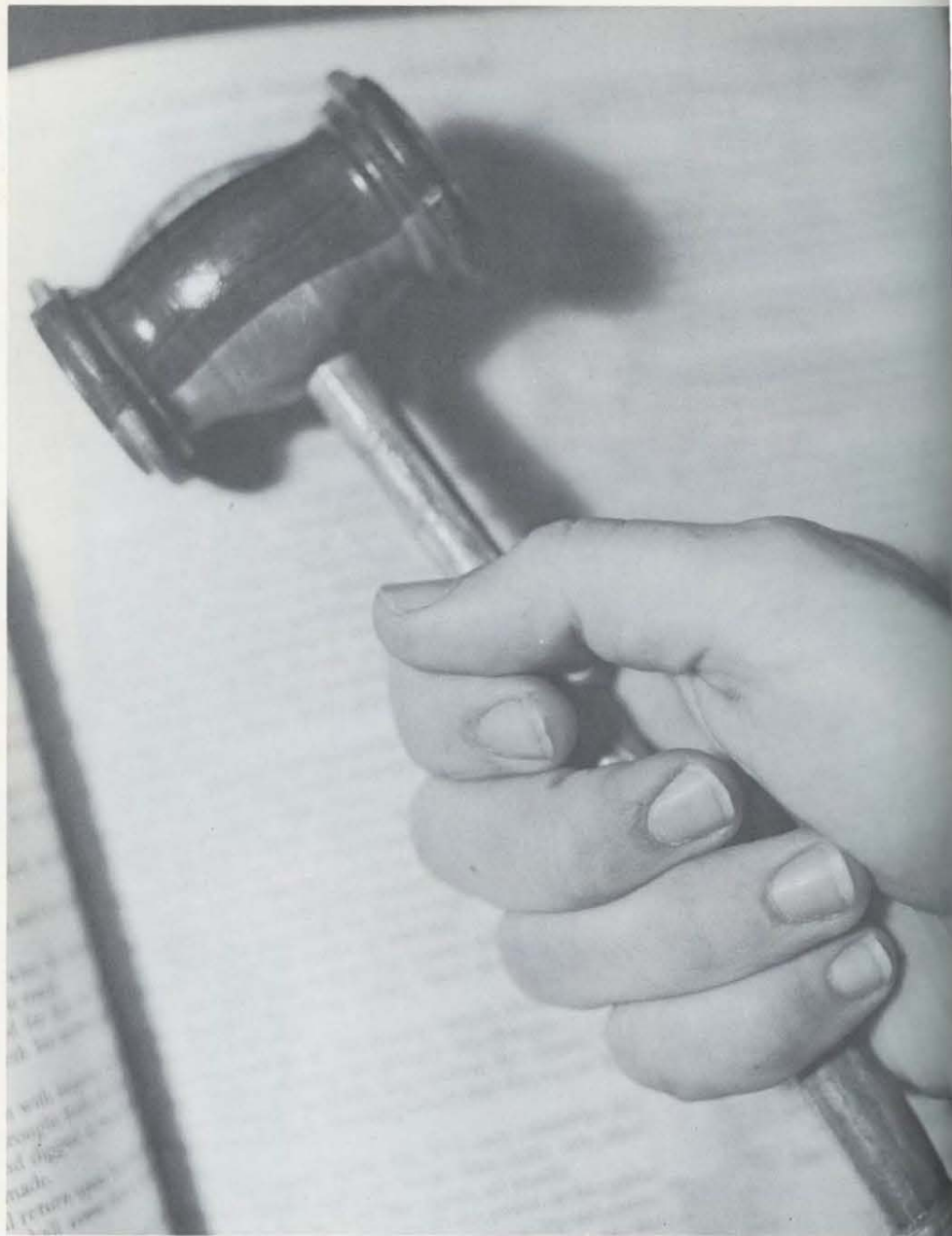


Mr. Tewinkel congratulates Lou
Jones, 1961-62 Most Valuable
Player.

The Most Valuable Player Award is given each year to the player who, in the estimation of his teammates, has done the most for the success of the team. Averaging over 20 points a game, Lou Jones was chosen for this honor. Lou, acting as team captain, led our team throughout the season. An example of Lou's ability would be the last game of the season, when Lou scored 26 points, making 13 field goals in 19 attempts for 68 per cent; leading The Crusaders to a 79 to 61 victory.



M.V.P. in action.



ORGANIZATIONS



6:00 A.M. — Will one cup do it, Jim?

Student Council



"Oh no! I missed the Council picture too."

Back row, left to right: D. Yeats, N. Buck, R. Lord, D. McKillips, T. Bennett, G. Freeman, G. Borg, D. Johnson, J. Matthews, J. Jensen, W. Farley.
Front row, left to right: M. Johnson, D. Brown, C. Schock, J. Treece, S. Costanzo, L. Matheson,



Women's Dormitory Council



Back row, left to right: S. Constanzo, V. Wangen, G. Swenson, J. Metcalf, S. Merrill.
Front row, left to right: L. Matheson, L. Hall, C. Schock, P. Batdorf, D. Gatch.



"My girls are in bed—now for some fun."

The Women's Dormitory Council acts as the promoter of the cultural, religious, and social life of the girls' dorm. This governing body takes as its objective the needs and problems of each girl in the dorm. A feeling of unity in the dorm has been achieved as a result of this council's functions.

Officers of Fishers of Men.



FISHERS OF MEN is a group which does personal evangelism work each Sunday afternoon. The participants are volunteers who gladly give their time to tell the unchurched of the saving grace of Jesus Christ.

CO-LABORERS, an organization composed of married women students and students' wives, meets monthly to exchange homemaking ideas and enjoy Christian fellowship.





Full of new ideas—
that's our editor!

Faces Behind These Pages



"Slave-for-a-day" Jackie gets the Shield men
ready for business.



Did Shakespeare have this much
trouble?



Joann's jig-saw—who's who
among the faculty, staff, and
classes.

Have you been shot yet?



"Rembrandt" and "Remington"
add the final touches to
the Shield pages.



All these faces have produced these pages for
YOU. Viewing these pages, you will be pensive,
laugh, grimace, nod in approval or in disapproval.

Nevertheless, whatever your present reaction may
be, in 20 years you will be glad that the faces
behind these pages made this book for *YOU*.



Advice to the "Shield-lorn".



"No Bill, Montana's not under the foreign
department."

"Now, back in '42 they
had a good idea."



Sports-talk.



"Well, that wraps up my section."

"Would 'kaffeelatsching' go under
activities or organizations, Joyce?"





"Let's organize an M.K.-P.K. Club!"

From common backgrounds and far-away places come the members of our first Greek letter club. $\Pi M K$ was the name chosen for the preachers' and missionaries' "kids" club when it was organized last fall. $\Pi M K$ meets weekly for Christian Service, prayer, and social activities. It is the desire of this organization to encourage other preachers' and missionaries' children, through a scholarship fund, to study at St. Paul.



Mr. Mason checks the spelling of the constitution.

Publicity-seeking members pose for the annual.



$\Pi M K$

Girls' Choir



Back row, left to right: B. Ming, B. Hess, R. Barton, M. Brevard, D. Jay, M. Nelson, D. Riddle, B. Bolstad, L. White, S. Anderson.

Third row, left to right: S. Schell, V. Wangen, J. Metcalf, C. Schock, L. Stanton, V. Wernberg, E. Clikeman, R. Claussen, E. Knudsen, R. Nelson.

Second row, left to right: M. Anderson, M. Johnson, N. Buck, G. Knudsen, J. Loberg, Z. Eberle, E. Thomas, L. Olson, D. Bishop, L. Hall.

First row, left to right: B. Malone, R. Arp, D. Gatch, K. Lappi, M. Welk, C. Moellring, S. Harper, J. Burkholder, D. Hall.



Rhoda Nelson, Accompanist.



Mrs. Lucille Brown, Director.



Back Row, left to right: L. Raygor, D. Johnson, J. Hiron, G. Stenlund, T. Bennett, G. Borg, G. Bawden, D. Wieneke.
 Third Row: B. Minnich, J. Mickelson, R. Lord, M. Bell, J. Matthews, R. Williams, N. Seeley, S. Wentworth.
 Second Row: M. Yeats, D. Brown, J. Lehman, G. Morrison, J. Jensen, R. Heppner, J. Larson.
 First Row: K. Erickson, K. Olson, G. Franz, B. Aspeter, L. Matheson, E. Beck, D. Stumbo, J. Borg.

Choral Club



"More volume from the tenors this time, please."



Pianist—par excellence!



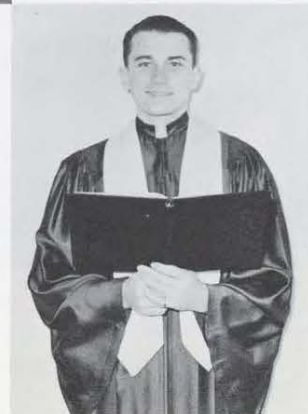
The Brass Ensemble rehearses under the direction of Jerry Kerr.

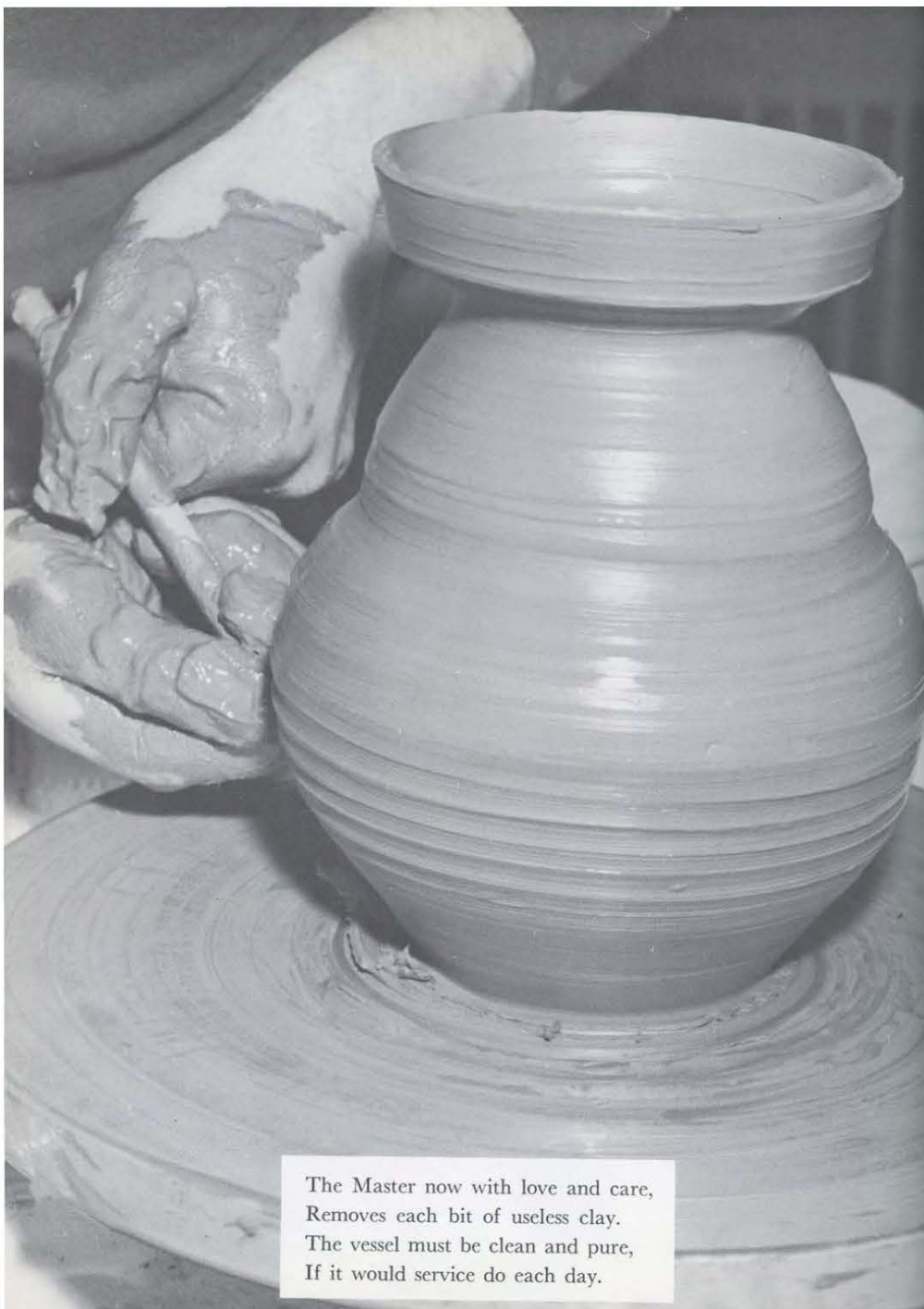


"Let's run over that last measure again."



"This one's in my range."





The Master now with love and care,
Removes each bit of useless clay.
The vessel must be clean and pure,
If it would service do each day.

College Service

Missions

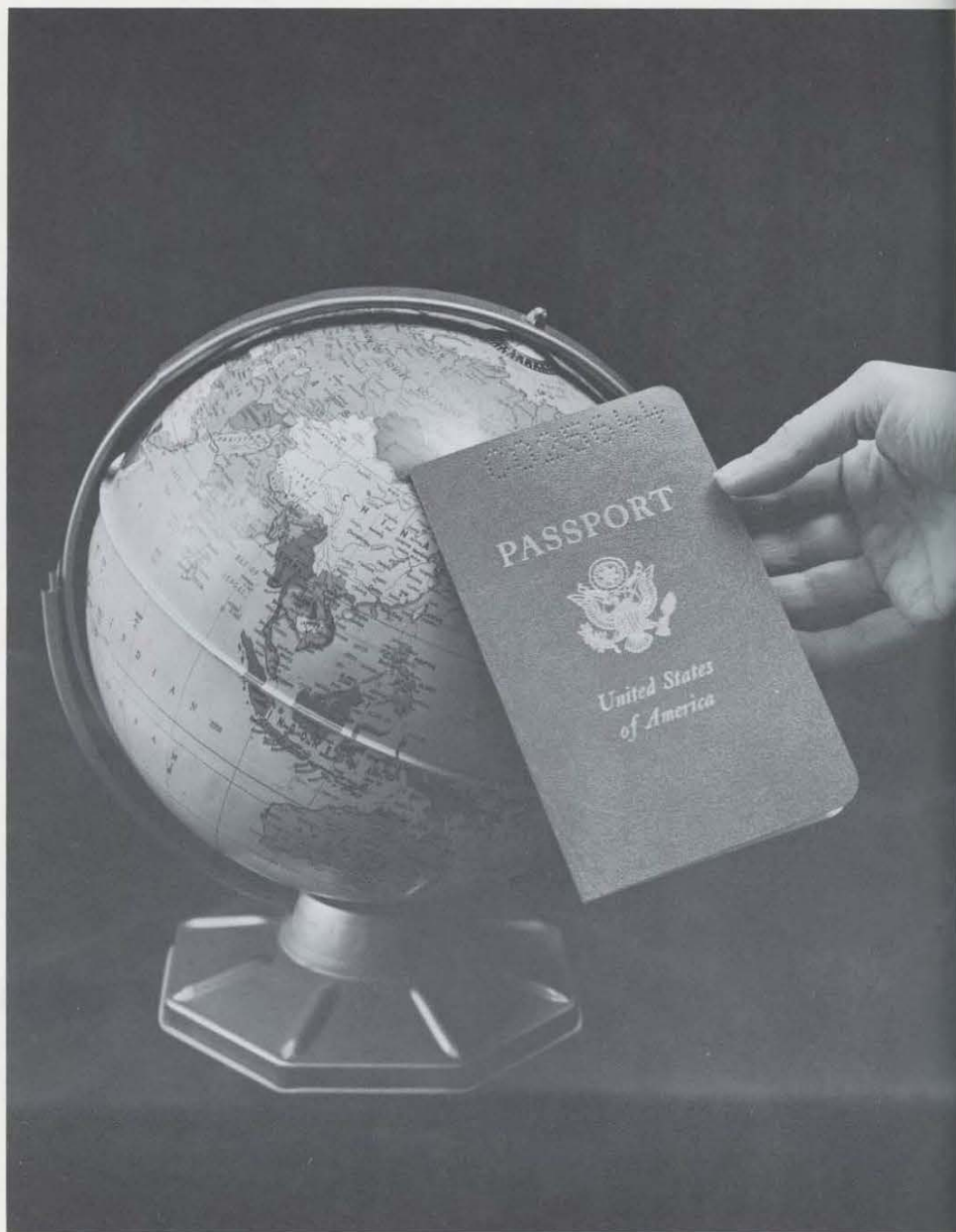
86

Christian Service

94



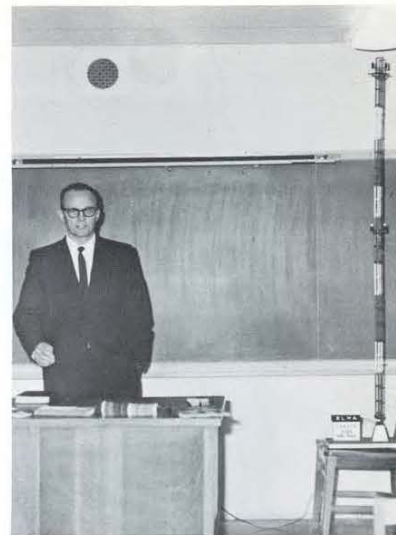
"... melt
me; mold me;
fill me; use me;
Spirit of the living
God..."



MISSIONS



Many questions which the student may have concerning missions are answered in the Campus Missionary Crusade held every fall at the St. Paul Bible College. This is accomplished through first-hand reports from missionaries home on furlough, informative talks from skilled technicians in fields such as radio and television, interviews with mission boards, and mission interest displays.



Fall '61 Missionary Cabinet



Back row, Left to Right: V. White, R. Lord, R. Davis;
Front row, Left to Right: V. Wangen, S. Costanzo, L. Matheson.

The Missionary Cabinet, elected every fall and spring, is one of the most important groups of the school. Around these students revolves most of the missionary emphasis of the student body.



Nancy checks to see who the speaker will be Friday evening.



The American Indian Prayer Band toured their field.

Spring '61 Missionary Cabinet



Back row, Left to Right: G. Barker, N. Pardun, J. Jennings;
Front row, Left to Right: C. Schaefer, P. Batdorf, M. Gerstel.

The duties of the Missionary Cabinet are many and varied. Some of them are: Planning the Friday evening meetings, heading up the early morning prayer times, and also working with the prayer bands.



Miriam Gasparini, visitor from Argentina.



Vi and Ron check over the program for Friday evening.

Missionary Prayer Bands

Every Friday during chapel time, the students meet in prayer groups to pray for missionaries who are scattered throughout the world. Each band is responsible for a specific area, to uphold God's workers who are laboring for Him in hard places.



INDO-CHINA Back row: L. Hall, L. Dunn, B. Wood, R. Davis, D. Gordon, R. Lord, D. Hall; Second row: T. Stigers, J. Borg, S. Harper; Front row: H. Rand, S. Elwood, D. Riddle, V. White, J. Lomire, R. Riddle, C. Pihl.



AFRICA Back row: G. Dean, C. Malone, E. Nielsen, L. Wiggers, D. Baynes, V. Adams, G. Kerr; Second row: R. Arp, J. Banek, K. Van Wagner, C. Moelling; Front row: G. Klaudt, D. Fredrikson, N. Baker, J. Rude, D. Smith, K. Black.



EUROPE Back row: D. McKillips, C. Rowe, D. Fenlason, B. Hattig, D. Leightner, D. Snyder; Front row: M. Shaw, L. Schoenherr, M. Brevard, P. Housden, R. Barton, D. Feddersen.



ISLAND WORLD Back row: S. Lahlum, D. Wentworth, P. Lindburg, G. Freeman, L. Shull, R. Dutton, J. Skor; Second row: B. Hendrickson, W. Rasmussen, M. Welk; Front row: D. Conley, E. Beck, M. Nelson, B. Minnich, V. Wangen, B. Gulbranson.



LATIN AMERICA Back row: J. Jennings, B. Nuckols, H. Vischer, R. Dean, N. Pardun, S. Turner, M. Mann; Second row: L. Frederick, R. Schrieber, J. Jacobs; Front row: M. Yeats, S. Benham, C. Schaefer, E. Clikeman, D. Bishop, S. Costanzo.



LATIN AMERICA Back row: G. Batton, G. Opp, F. Pruessner, C. Leimberer, G. Bawden, R. Williams, B. Reaves; Second row: W. Frankenberry, K. Larson; Front row: M. Johnson, M. Gerstel, B. Nuckols, S. Larson, V. Wernberg, J. Killich.



NEAR EAST INDIA Back row: G. Franz, R. Carlson, A. Aspeter, J. Wilson, N. Buck, D. Smith, K. Lappi; Front row: G. Frantik, C. Cutcomp, B. Hess, J. Laurin.

NEAR EAST INDIA Back row: D. Opp, M. Shaw, L. Smalley, S. Anderson, B. Williamson, S. Schell, J. Matthews; Front row: K. Olson, R. Nelson, J. Jensen, D. Harris, J. Nichols, J. Loberg.



HOME MISSIONS Back row: A. Bieber, F. Brown, E. Twist, W. Watts, D. Wieneke, L. Reibling; Front row: G. Swenson, M. Leimberer, F. Reynolds, L. Cain, D. Jay, B. Aspeter.



NORTH AMERICAN INDIAN Back row: D. Yeats, M. Bell, R. Anderson, J. Phillips, D. Showell; Front row: C. Daniel, S. Reigle, M. Anderson, R. Heppner, S. Graff, L. Wolstad.



NORTH AMERICAN INDIAN Back row: K. Harley, D. Kaufman, D. Balton, R. Rohletter, D. White, S. Merrill; Front row: P. Batdorf, B. Ming, M. Eastman, C. Schock, L. Matheson, D. Unruh.

NORTH AMERICAN INDIAN

Back row: G. Morrison, D. Morin, L. Adey, L. Stanton; Front row: K. Erickson, B. Bolstad, J. Wetmore, N. Seeley, E. Knudsen, B. Katschke.





introducing . . .
Christian Service

A useful tool for a very busy man.

Miss Carlson, secretary
to the Christian Service
Director.



Mr. Shepson, Christian
Service Director.



Sharen Bailey accom-
panies the Violin Trio.



Charlotte Pihl—
Soloist



"Yes, one of our students can serve at
your church this Sunday."



Gary Borg portrays the role of a
Sunday School teacher. To him prepara-
tion means success.



Joan Borg, Gaylene Morrison, and
Geraldine Franz are one of our rather
outstanding trios. They not only play
their violins, but they sing as well.
They travel often on weekends to dif-
ferent churches in the tri-state area.





Carol Schock loves to work with children. She has found it a real opportunity working under the direction of the Christian Service Department.



Nancy Walker teaching Sunday School.



Bev Malone—Pianist



Marlene Gerstel teaches the Sunday School lesson through the use of a flannelgraph story.



Sue Thompson, Leota Olson, and Diane Riddle are another one of our fine trios who serve the twin city area in many Sunday morning church services.



Jack Hirons at the organ.



Burley McDonald — Pastor and student brings a Sunday morning message to his people.



Joan Borg and Ron Lord serve their Lord as they practice for a Sunday morning worship service.



Linda Hall, Sue Harper, and Dorothy Hall make up one of our talented trios. Their objective in singing is to win men and women, boys and girls to Jesus Christ.



Georgia Swenson—
Pianist



Sharron Merrill—
Soloist



Singing for our Saviour has placed a smile on the faces of Gary Stenlund, Duane Spilde, Darald Wieneke, John Matthews, and Jack Hirons, their accompanist.



Terry Bennett and Dennis Johnson,
"Be thou exalted Lord . . ." Psalms 21:13



Gerry Dean, firmly adheres to — "Practice makes perfect."



Linda Schoenherr
" . . . Play skillfully with a loud noise." Psalms 33:3



Judy Gowdy
" . . . Sounding forth the message of the Cross"



A Place to Serve

The weather is no hindrance as these girls make their way to their Ober Boys Club classes.

"Remember now thy creator in the days of thy youth . . ."



Steve Berger, director of the Ober Boys Club. This club is one that reaches lively, enthusiastic youngsters with the gospel in an area where there is no Sunday School.

Ober Boys Club

These little girls listen attentively as Trixie Stigers tells them a story from the Bible.



Carol Daniel and Zoe Eberle use flash cards to tell a story at the Ober Boys Club.



Marilyn Cutkomp gives of her time to serve the Lord at the Ober Boys Club.



Fishers of Men

"I will make you
fishers of men if you follow me . . ."



John points out another
of the strategic areas for
"Operation Fishers".



Through the distribution of tracts,
the seed is sown.

Mission Work



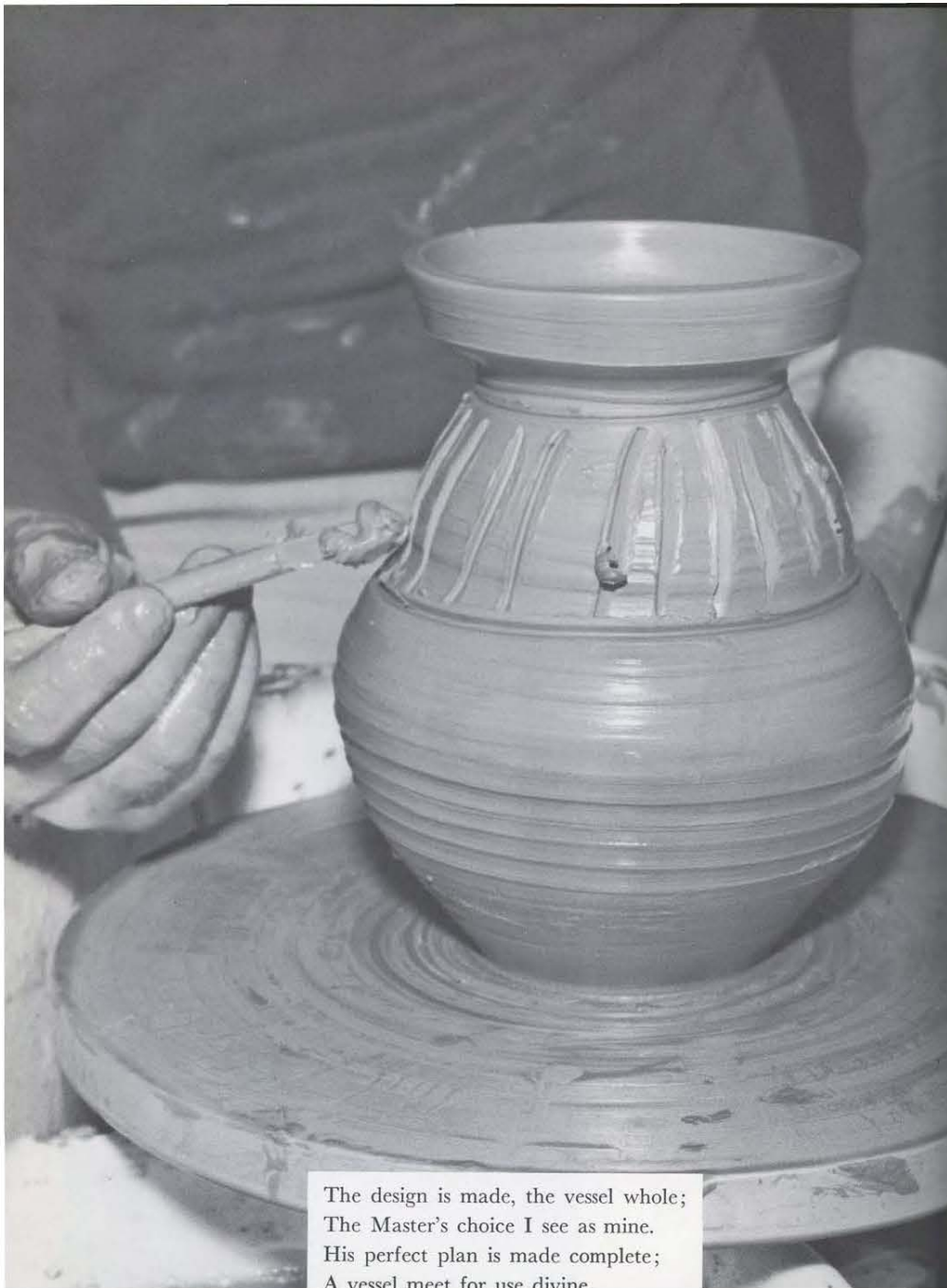
"Study to shew thyself approved . . .
rightly dividing the word of truth."



"Lord, lay some soul
upon my heart . . ."



"For I am not ashamed of
the gospel of Christ . . ."



The design is made, the vessel whole;
The Master's choice I see as mine.
His perfect plan is made complete;
A vessel meet for use divine.

Advertisers



CONGRATULATIONS AND BEST WISHES
CLASS OF '62

SIMPSON MEMORIAL CHURCH

1645 CHARLES AVENUE
SAINT PAUL 4, MINNESOTA

JAMES E. DAVEY, Pastor

"A Twentieth Century Program — A First Century Message"



Services:

Sunday — 10:45 A.M. and 7:00 P.M.

Wednesday — 7:30 P.M.

Church School: Sunday — 9:30 A.M.

Full Youth Program: Sunday — 5:45 P.M.



A TIMELESS PRAYER . . .

"I have now, O Lord, as Thou has said in Thy Word, covenanted with Thee, not for worldly honors or fame, but for everlasting life. . . . Place me in what circumstances Thou mayest desire. . . . Support and strengthen me, O my Captain, and be mine forever."—

Dr. A. B. Simpson, 1843-1919, Founder.

GREETINGS AND CONGRATULATIONS, CLASS OF '62

Now that you have completed your training for service, we join in your prayer for Divine direction, and trust that each of you will find God's wide-opened door for effectual ministry.

Wherever you may be, we know that you will daily breathe the spirit of Dr. Simpson's timeless prayer with the more than 830 men and women already serving as Alliance missionaries on 23 fields of the world. . . . "Place me in what circumstances Thou mayest desire . . . and be mine forever."

THE INTERNATIONAL HEADQUARTERS OF THE CHRISTIAN AND MISSIONARY ALLIANCE

260 W. 44th St., New York 36, N. Y.

The Foreign Department
The Finance Department

The Home Department
The Alliance WITNESS

The Education Department
The Publication Department

. . . AN AGELESS TASK

"The supreme need of our day is for a company of gospel preachers and missionaries who, filled with a burning passion for the souls of men, will lay aside every other consideration and go forth preaching the Word in the power of the Holy Spirit."—

Dr. Nathan Bailey, President, 1961 Message to Council



DON EKELUND COFFEE CO.

Distributors of MAXWELL HOUSE COFFEE and
Specialty Foods

418 Third Ave. No. Minneapolis 1, Minn.
FEderal 6-2656

LLOYD'S PHARMACY

Accurate
PRESCRIPTION SERVICE
SCHOOL SUPPLIES

720 N. Snelling

HAMLIN HARDWARE & PAINT

TEL. MI. 4-3037

Snelling and Englewood

LUNDQUIST JEWELRY CO.

See Us For
DIAMONDS — WATCHES — JEWELRY
And
Trophies for All Occasions — Expert Engraving

318 Jewelers Exchange
627 - 1st Ave. No.
Phone FEderal 6-7978 Minneapolis 3, Minnesota



Always there . . . when you need care

Before...and After Graduation...

You can depend on Blue Cross for reliable hospital care coverage
and MII for realistic doctor care coverage wherever you go.

Whether you are single or married, you get the vital
protection you need . . . at a cost you can afford to pay.

Remember — When you graduate, your Blue Cross and MII
can go with you. So, don't let an expensive illness darken
your future. Be prepared with the health care team that has
never canceled a contract because of age, condition of
health or amount of benefits furnished —
Minnesota Blue Cross and Minnesota Indemnity, Inc.

MINNESOTA HOSPITAL SERVICE ASSOCIATION
MINNESOTA INDEMNITY, INC.
2610 UNIVERSITY AVE. ST. PAUL 14, MINN.

HAZEL PARK ALLIANCE CHURCH

Lowell C. Strumpfer
Pastor

PR. 1-1152

J. M. Tewinkel, Director of Music

Sunday School 9:30 A.M.
Morning Worship 10:50 A.M.
Youth Fellowship 6:00 P.M.
Evening Service 7:00 P.M.
Midweek Service, Wed. 8:00 P.M.

WE CORDIALLY INVITE YOU TO
WORSHIP WITH US AT
EAST SEVENTH & WHITE BEAR AVE.
ST. PAUL, MINN.

HITI STUDIO

In The Midway

Portraiture and Commercial
Any Thing — Any Where — Any Time

University At Snelling
1547 University Ave. St. Paul 4
Midway 4-3690

L. LEONARD HITI
Master of Photography

BECKLUND JEWELERS

1511 East Lake St., Minneapolis

Open Monday and Friday Evenings Till Nine
No Charges For Credit

DEAL WITH CHRISTIAN CONFIDENCE



LARGEST SELECTION IN THE NORTHWEST

"Large enough to serve you . . . Small enough to know you"

HAMLIN CLEANERS

1 Hr. Service 6 days a week
1 Day Shirt Service, 4 for 99¢

Snelling and Minnehaha St. Paul 4, Minn.
Midway 4-5885

Swanson's Paint & Wallpaper

— ARTIST SUPPLIES —

Stores Conveniently Located in Greater St. Paul

"Friendly Service for Over 69 Years"

Main Store - 512 No. Snelling Ave. - MI. 6-7178

DUTCH BOY PAINTS AND VARNISHES

REAL ESTATE

APPRAISALS

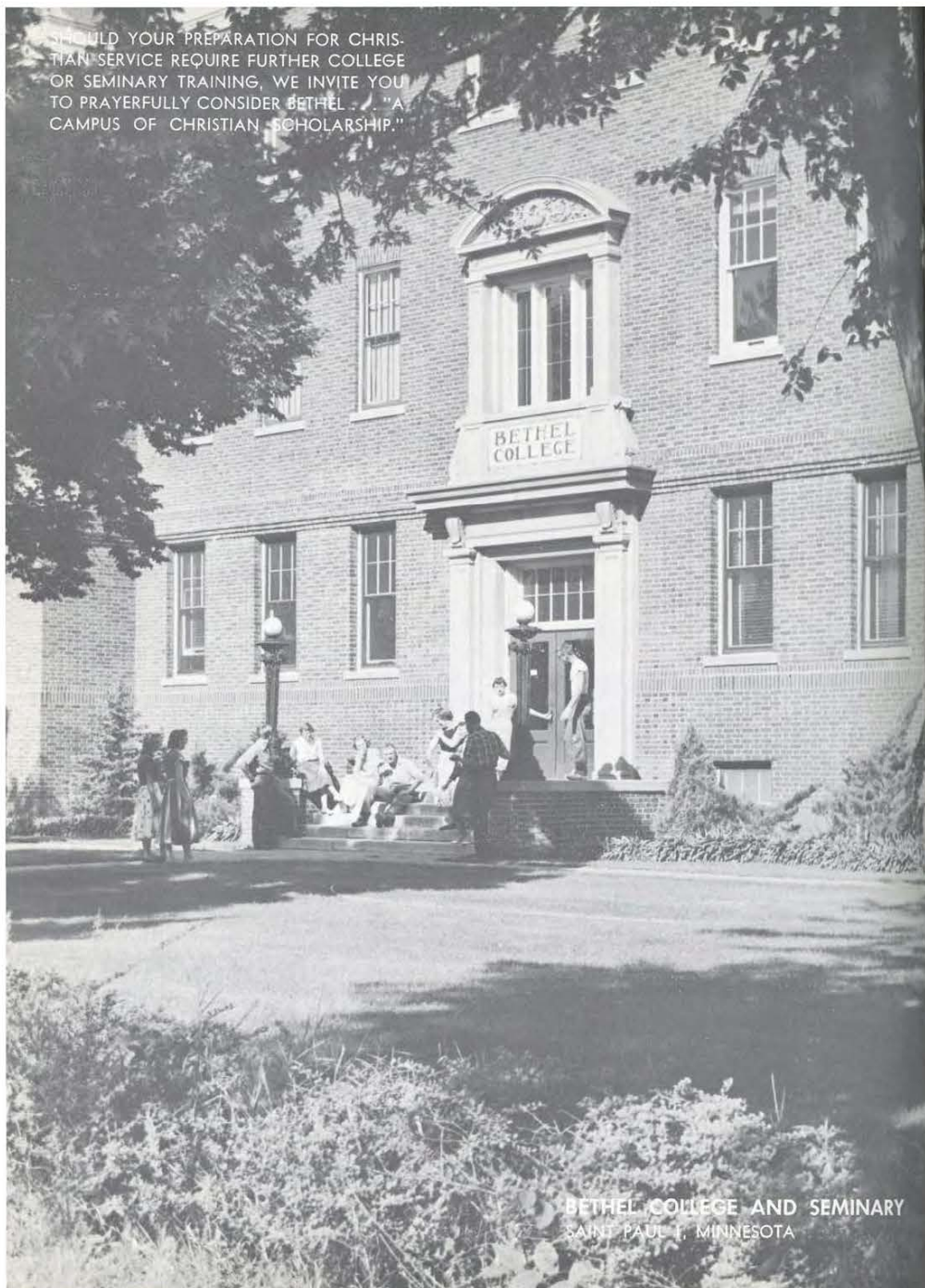
LEAF & THERA, INC.

COMPLETE INSURANCE SERVICE

515 N. Snelling Ave. St. Paul 4, Minn.

Midway 6-8646

SHOULD YOUR PREPARATION FOR CHRISTIAN SERVICE REQUIRE FURTHER COLLEGE OR SEMINARY TRAINING, WE INVITE YOU TO PRAYERFULLY CONSIDER BETHEL . . . "A CAMPUS OF CHRISTIAN SCHOLARSHIP."



BETHEL COLLEGE AND SEMINARY
SAINT PAUL 1, MINNESOTA

For the UNUSUAL in Flowers

BARR'S FLOWER SHOP

Mldway 6-7941

Snelling at University . . . St. Paul 4, Minn.
Res. Mldway 4-9970

MIDTOWN BARBER SHOP

634 North Snelling Ave.

The Students of the School appreciate the neat work and pleasing atmosphere of this Christian barber shop. There is a reason why this skilled Christian barber is always busy.

HAMLIN HOTEL

Reasonable Daily and Monthly Rates
MEALS AVAILABLE IN COFFEE SHOP
Free Overnight Parking

545 No. Snelling Ave.
2 Blocks No. University

MI. 6-7148

HAWKINSON'S JEWELRY

Hamilton - Elgin - Bulova Watches

Expert Watch Repairing

491 N. Snelling at University

MI. 5-1077

"TIP TOP" Cleaners and Launderers

1346 W. Minnehaha Ave., near Hamline

Phone MI. 5-6892 - Hours: 8 A.M. to 6 P.M.

TRY US

FAIR PRICES

C. J. and H. W. ANDERSON JEWELERS

Hamilton - Elgin - Wittnauer Watches

1466 University Ave.

Mldway 4-9910

Midway Center

KEMP PHARMACY

Hamline and Thomas

Mldway 4-2877

Mldway 6-9019

WASHING - GREASING - TIRE REPAIR
TIRES - BATTERIES - ACCESSORIES

LEN'S SHELL SERVICE

Hamline and Thomas

St. Paul, Minn.

Midway Typewriter Exchange

SALES - SERVICE - SUPPLIES - RENTALS

Typewriters and Business Machines
All Makes and Models

736 N. Snelling

Carl W. Wagener

MI. 5-7451

SMITH'S R & K SERVICE

PHILLIPS "66"
Gasoline and Oil

EXPERT MECHANICAL REPAIRS

717 N. Snelling

Mldway 4-1960

JIM

NORM'S TEXACO STATION

WASH, GREASE and ETC.

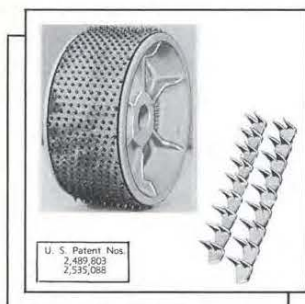
Van Buren and Snelling

Mldway 6-4946

CONGRATULATIONS . . .

*The Hope of the righteous shall be gladness—but
the expectation of the wicked shall perish.*

Prov. 10:28



"RAPID FILL"
Tire Buffing Rasp

NEILSEN PRODUCTS CO.

Lake Elmo

::

Minnesota

CONGRATULATIONS AND BEST WISHES TO THE SENIORS OF 1962

*"Offer the sacrifices of righteousness,
and put your trust in the Lord."*

Psa. 4:5

ROBERT O. WESTLUND

GENERAL CONTRACTOR

1781 Hamline Avenue North





COMPLIMENTS OF SOULS HARBOR

where all things are anchored in Jesus

Sunday School	-	-	-	-	-	-	-	-	9:30 A.M.
Morning Worship	-	-	-	-	-	-	-	-	10:45 A.M.
Television Channel 9	-	-	-	-	-	-	-	-	1:00 P.M.
Youth Groups	-	-	-	-	-	-	-	-	6:00 P.M.
Evangelistic Meeting	-	-	-	-	-	-	-	-	7:30 P.M.
Thursday, Deeper Life Service	-	-	-	-	-	-	-	-	7:30 P.M.
Christian Cinema every 1st and 3rd Saturday	-	-	-	-	-	-	-	-	7:30 P.M.

REVEREND GORDON K. PETERSON, *Pastor*
The Man with the Message

Not to be ministered unto but TO MINISTER

LEONARD M. CARLSON

PAINTING AND DECORATING

773 North Howell Phone: Mldway 4-8917

COWS WILL BE COWS . . .

and even the selected beauties that produce your Sanitary Farm Dairies milk sometimes eat weeds. But you'll never get off-flavors from weeds or other causes in your Sanitary Farm Dairies milk because . . .

IT'S VACUUMIZED

Vacuization is a process using patented stainless steel equipment which removes all air from milk, and with the air it removes all off-flavors, such as those caused by weeds, dandelions and high-acid silage.

Sanitary Farm Dairies employs this revolutionary new process which seals in the fine, rich flavor of pure, fresh milk . . . insures uniform flavor and quality every day of the year. It's milk at it "Flavorbest".

"Dairy Products of Fine Flavor"

Phone CA. 4-4991

For service at your home

Sanitary
FARM DAIRIES

CONGRATULATIONS AND BEST WISHES

To The

Graduating Class of 1962

From

THE CENTRAL DISTRICT OF THE CHRISTIAN AND MISSIONARY ALLIANCE



New Food Service Building — Beulah Beach, Ohio

Representing the States of

Ohio — Indiana — Michigan — Kentucky — West Virginia — Southern Illinois — Southern Missouri

District Headquarters
Beulah Beach, Ohio

District Superintendent
Rev. David N. Clark

CHRISTIAN PUBLICATIONS INC.

CONGRATULATIONS CLASS OF "62"

*"... and you shall know the truth and
the truth shall make you free."*

John 8:32

Third and Reily Streets
Harrisburg, Pa.

ST. PAUL BIBLE COLLEGE

CHRISTIAN AND MISSIONARY ALLIANCE



CONGRATULATIONS

TO OUR

GRADUATING CLASS

OF

1962

from

FACULTY, STAFF AND STUDENTS OF ST. PAUL BIBLE COLLEGE

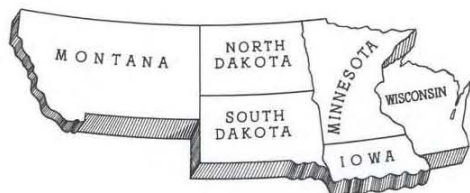
St. Paul, Minnesota

FOUNDED 1916

DR. HARRY HARDWICK, *President*

There Are Prepared Places
for Prepared People

THE NORTHWESTERN DISTRICT



extends Congratulations and Best Wishes
to the
Class of '62



A Christ-centered ministry
in the interests of
world-wide evangelism

CARL VOLSTAD, District Superintendent
LEO BERRETH, Assistant Superintendent
Northwestern District of the Christian
and Missionary Alliance
District Offices at 1361 Englewood Avenue
Saint Paul 4, Minnesota

*Best Wishes
and
Sincere Appreciation
for the
Assistance Furnished Us
during the past year*

MONTGOMERY WARD

1400 UNIVERSITY AVENUE
ST. PAUL, MINN.



Congratulations — Class of '62

THE ROSE HILL ALLIANCE CHURCH

2417 W. Larpenteur Ave. Saint Paul
REV. RICHARD LUDWIGSON
Sunday School - - - - - 9:45 A.M.
Sunday Services - 11:00 A.M. and 7:00 P.M.
Church Phone: Mi.5-3340 Parsonage Phone: Mi. 5-9691



CONGRATULATIONS
TO
CLASS OF 1962

GREENBERG'S GARAGE

RAMBLER
SALES and SERVICE

Nowthen, Minnesota
P.O. Anoka, Rt. 2
Phone — Elk River - 489W11
Anoka - HA 1-8891



ST. PAUL BIBLE BOOK STORE

1361 Englewood Avenue

St. Paul 4, Minnesota

BIBLES • DEVOTIONAL BOOKS • FICTION
DICTIONARIES AND COMMENTARIES

VISUAL EDUCATIONAL SUPPLIES • CHURCH SUPPLIES
GIFT ITEMS • GREETING CARDS FOR ALL OCCASIONS

COMPLETE LINE OF D.V.B.S. MATERIAL

WE INVITE YOUR MAIL ORDERS

EDNA TEETER, Manager

COAL - COKE - BRIQUETS FUEL OIL

FOR YOUR HOME OR BUSINESS

"BLUE POINT" POCAHONTAS—ALL SIZES
"STOTT BRIQUETS" "PETROLEUM BRIQUETS"
"PETROLEUM CARBON COKE" "KOPPERS COKE"
"COMMANDER"—KENTUCKY'S FINEST STOKER COAL
"PURITAN"—W. KENTUCKY 1" x 1/4" STOKER COAL
"AMAZON"—W. KENTUCKY 1 1/4" x 1/4" STOKER COAL
"FIRE KING"—SOUTHERN ILLINOIS STOKER COAL
FUEL OIL

FOR LARGE OR SMALL ORDERS
Midway 6-6511

GREAT LAKES COAL & DOCK CO.

2102 University Ave.

St. Paul, Minn.

TYPECRAFTERS

VICTOR ANGERHOFER AND ASSOCIATES

500 Robert Street

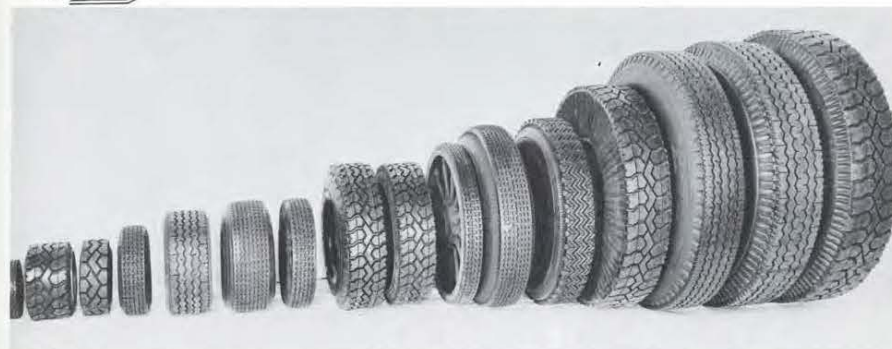
436 Rossmor Building

St. Paul 1, Minnesota

Capital 4-6036

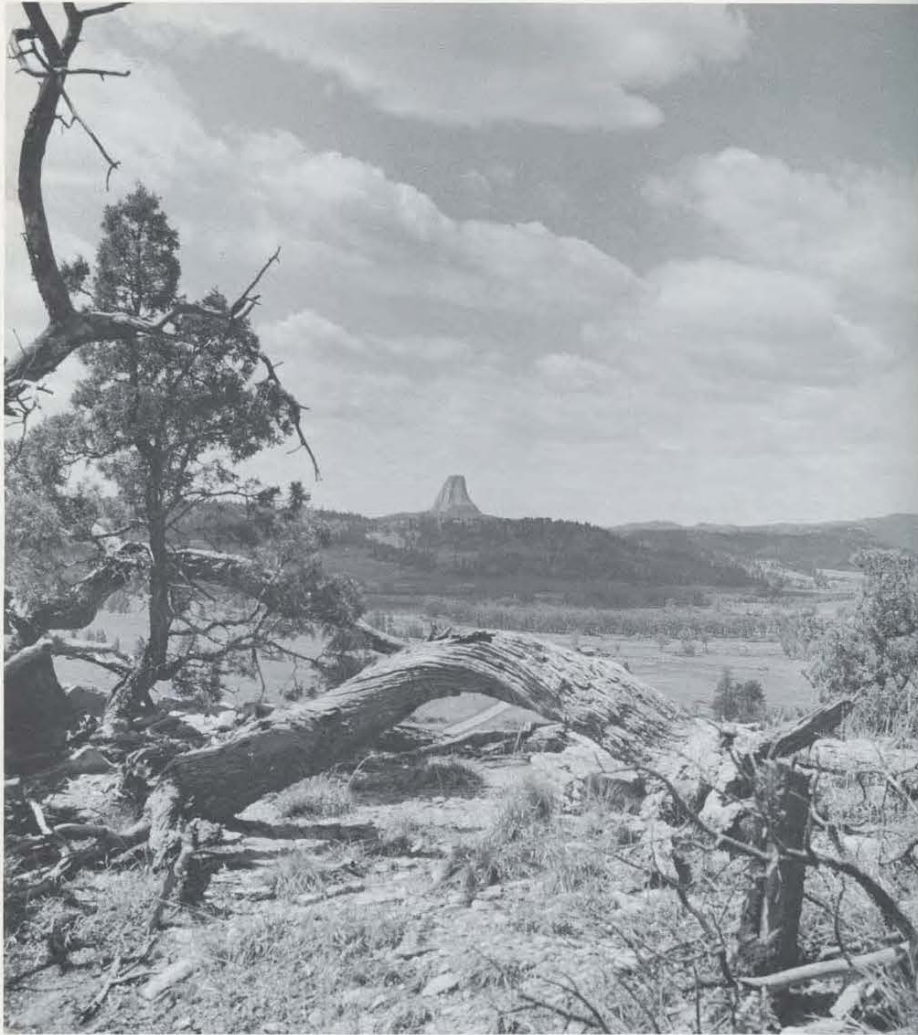


COLD PROCESS TOPCAPPING



DOUBLE THE MILEAGE

Bandag Inc.
1056 Hershey Ave.
Muscatine, Iowa



"... Be strong and of a good courage; be not afraid, neither be thou dismayed: for the Lord thy God is with thee whithersoever thou goest."—Joshua 1:9

The Senior Class

THERE ARE PREPARED PLACES
FOR PREPARED PEOPLE



The St. Paul Alumni around the world extend Congratulations to the Class of 1962

and

WE WELCOME YOU AS A FELLOW MEMBER OF
THE ALUMNI ASSOCIATION

of the
St. Paul Bible College

J. E. PROCTOR



*"Then spake Jesus again unto them, saying,
I am the Light of the World . . ." John 8:12*

The Class of "63"

BROWN'S ICE CREAM COMPANY

BROWN'S VELVET ICE CREAM
ICE CREAM FOR ALL OCCASIONS
1855 East Lake St. Minneapolis 7, Minn.

KNUTSON KWIK SHOP

1338 Thomas at Hamline
GROCERY - DAIRY - FRESH BAKERY
When you run out—run in.

BIG ENOUGH TO SERVE **YOU**
SMALL ENOUGH TO KNOW **YOU**

Courteous, Convenient
Complete Banking Service

LIBERTY STATE BANK

MEMBER FEDERAL DEPOSIT INSURANCE CORPORATION
Selby and Snelling MI. 6-8681

Compliments of

BARNES and SMITH

1220 W. Minnehaha

DOM'S SHOE SHOP

Minnehaha and Hamline

PEERLESS CLEANERS

Hours 7 a.m. to 6 p.m. Efficient Delivery Service
20% Discount To All St. Paul Bible College Students
729-21 No. Snelling St. Paul, Minnesota

HAMLIN BARBER SHOP

595 North Hamline Avenue
at Thomas

HAMLIN BROILER

Snelling at Englewood Avenue

Westlands

FOOD MARKETS, INC.

QUALITY MEATS, FISH AND POULTRY

Quick Freeze Service
and Frozen Foods

597 N. Snelling Ave.
Midway
St. Paul E4, Minn.

LOCKER RENTALS

Midway 4-8621

For a Good Selection of Nationally Advertized
TELEVISION and APPLIANCES

See

BENIKE'S

449 No. Snelling

MI. 5-3944

The NEW

HENRY

Funeral Home

536 No. Snelling at Charles St. Paul 4, Minn.
MI. 6-2844

LOOK BETTER

ARNIE'S BARBER SHOP

Hamline and Minnehaha
FEEL BETTER



*The glass of life will never fill,
Unless you find the Father's will.*

The Sophomore Class

*God-Speed and Best Wishes
to
Graduates and Students*

remember
THRIFT IS A VIRTUE
Practice it and you will
solve many of life's
problems

A GOOD PLACE TO SAVE
A GOOD PLACE TO BORROW

St. Paul Federal
SAVINGS AND LOAN
ASSOCIATION

Axel A. Olson, President

353 Robert Street



Congratulations, Class of '62

CHURCH OF THE OPEN DOOR

(Christian and Missionary Alliance)

39th Avenue North and Highway 100
Robbinsdale, Minnesota

Sunday School 9:30 A.M.
Sunday Services 10:45 A.M. & 7 P.M.

DAVID B. HUSTAD, Minister

SECURITY WHOLESALE GROCERY CO., INC.

Suppliers To
FINER RETAIL FOOD MARKETS, INSTITUTIONS, CLUBS,
HOTELS AND RESTAURANTS

FOR THE FINEST IN FOODS . . .

INSIST ON DINNER PARTY LABEL

321 Grove Street

Saint Paul, Minnesota

FRESHMAN CLASS SONG

Bennett

Hirons



The Freshman Class of S.P. B. thru we'll
conquer all be-fore us, true, with
Christ who goes be-fore us to Him we'll give the praise He
gives us strength to over-come thru all our days
We will fight with all our might, till our goals we see in sight the
Freshman class of S.P. B.I., we'll be high, for
St. Paul Bi-ble C

COURTESY
of the
FRESHMAN
CLASS



Preferred Risk Mutual Ins. Co.

PREFERRED RISK MUTUAL INSURANCE

NON-DRINKERS
AUTO
INSURANCE
AT REDUCED RATES



For information call . . .

YOUR LOCAL AGENT

ALFRED C. STAHNKE

Call about
AUTO, FIRE and LIFE INSURANCE

Payne-Allen Building

Case Ave. Entrance

965 Payne Ave.

PRospect 1-5442



Congratulations, Class of '62

ALLIANCE MISSIONARY CHURCH

28th Avenue West at First Street

Duluth, Minnesota

EDISON G. BROOKER, Pastor



EARL'S MISTER PIZZA

PLEASANT DINING ROOMS

PIZZA

SPAGHETTI

SPUMONI

TAKE-OUT ORDERS

Hours: 11:00 A.M. - 2:30 A.M.

Closed Sundays at all locations . . . to encourage and allow our employees to attend church—The Lord's Day.

THANKS FOR YOUR PAST PATRONAGE

GOD BLESS YOUR FUTURE

DELIVERY SERVICE
IN HOT OVENS
MI. 5-9391

1748 No. Lexington
HU. 8-5585

467 No. Snelling Ave.
MI. 5-2522

841 Grand Ave.
CA. 4-7825

Compliments of the Roseville Center

Barber Shop
Hansel and Gretel
Mary Adams
Melody Plus Shop
National Food
Rose Gift Center
Roseville Bakery
Sears
Sherwin-Williams Paint
Woolworth's

Compliments of

ROSE BOWL LANES
2057 No. Snelling Avenue

Call us for
Open Bowling Reservations
MI. 5-9466

GREETINGS . . .
IN THE GOSPEL

FROM
FIRST BAPTIST CHURCH
10th and Harmon

Minneapolis :: Minnesota

DR. CURTIS AKENSON, Pastor

THE
OMAHA GOSPEL TABERNACLE
CHRISTIAN AND MISSIONARY ALLIANCE

2006 Douglas Street
Omaha 2, Nebraska

"In the heart of Omaha"

Home of Chapel Studio, World Radio Congregation
Radio Station WOW

Chapel Service broadcast 8:05-9:00 A.M. WOW; 8:30-9:00 A.M.
Northwestern College stations (KTIS AM and FM of Minneapolis,
KNWS of Waterloo, Iowa, and KFNW of Fargo, North Dakota);
9:30-10:00 A.M. WPEL AM and FM of Montrose, Pennsylvania;
and 7:00-7:30 A.M. WCBC of Anderson, Indiana.

CONGRATULATIONS AND BEST WISHES
FOR YOUR TOMORROWS

MIDWAY MOTOR LODGE

1964 University Ave. MI. 5-8681

Mr. David Chase, Manager

100 AIR CONDITIONED ROOMS
INDOOR SWIMMING POOL
MR. JOE'S RESTAURANT

FIRST COVENANT CHURCH
Chicago Avenue and Seventh Street South
Minneapolis, Minnesota

PASTOR
Rev. Paul P. Fryhling

SCHEDULE OF SERVICES

Sunday School, Classes for All Ages (College Age Class)	9:45 A.M.
Morning Worship Service	11:00 A.M.
Broadcast over KTIS-FM, Minneapolis; KFMW, Fargo; KICY, Nome, Alaska	
Evening Evangelistic Service	7:00 P.M.
Thursday Evening—Bible Study and Prayer	7:30 P.M.

YOUTH ACTIVITIES

SUNDAY
8:30 P.M., College Age Fellowship

Three age groups comprise THE FELLOWSHIP OF YOUTH
LEAGUES, providing an outlet for the interests of youth. A
CHRIST-centered program of buoyancy and enthusiasm, geared to
our times, includes worthwhile speakers, discussions, films and
socials.

WE WELCOME YOU TO WORSHIP WITH US



NYACK MISSIONARY
COLLEGE

COMMEMORATES **80** YEARS OF
CHRIST-CENTERED EDUCATION

12,000 Alumni Look Back Upon Their Training
On Nyack's Scenic 65-Acre Campus

- A CHANGELESS CHRIST
- AN INFALLIBLE BIBLE
- AN EVANGELICAL MESSAGE
- A WORLD OUTLOOK
- A MISSIONARY FERVOR



NYACK MISSIONARY COLLEGE — NYACK, NEW YORK

Congratulations From . . .

The NORTH BROOK ALLIANCE CHURCH

Warm Spirit—A Christ-Centered Message

Sunday School 9:45 A.M.
Morning Worship 11:00 A.M.
Youth Fellowship 6:00 P.M.
Evening Service 7:00 P.M.
Midweek Prayer 7:00 P.M.

REV. PAUL BUBNA PASTOR

6240 Aldrich Avenue North
Minneapolis 12, Minnesota

Church Phone - - - 561-2664
Parsonage Phone - - - 561-1294

CONGRATULATIONS to the Class of 1962

From the Members

GRAND AVENUE ALLIANCE CHURCH

3100 Grand Avenue South
Minneapolis :: Minnesota

LESTER A. KIM, Minister

"The church in the heart of Minneapolis
with Minneapolis on its heart"

Students:

James Treece
Beverly Hendrickson
Viola Wangen
James O'Hara
Bruce Wood
Linda Hall
Douglas Swanson

"It Pays to Drive a Little Farther"



Rev. James T. Cunningham, Pastor

"... your heavenly Father knoweth
that ye have need . . . But seek ye
first the kingdom of God, and His
righteousness; and all these things
shall be added unto you."

Matt. 6:32-33

HAVELOCK CHRISTIAN AND MISSIONARY ALLIANCE CHURCH

6433 Havelock Ave.
Lincoln, Nebraska

MIDWAY



BANK

578 University

Midway Center

Home Type Cooking
Our Specialty — Chicken Pie
QUALITY CAFETERIA

Snelling and Van Buren

ML. 4-6319

Compliments of . . .

Ad Sales Managers

Hoz Vischer

Dave Showell

UNCLE JOHN'S PANCAKE HOUSE

Snelling Avenue at Highway 36

open 'til 3 A.M. Friday and Saturday
other days until midnight

**Western Pennsylvania District
of the
Christian and Missionary Alliance**



CONGRATULATIONS
to the class
of '62

SIMPSON BIBLE COLLEGE

In The Gateway City

"GATEWAY TO WORLD SERVICE"



STUDENT DIRECTORY

ADAMS, Virgil W., Box 1105, Lake Alfred, Florida
 ADEY, Larry E., 14th St. North, Box 281, Grand Rapids, Minnesota
 ADEY, Reva R. (Mrs. L.), Pine River, Minnesota
 ALLWINE, Sharon D., 3316 North 47th Ave., Omaha 4, Nebraska
 ANDERSON, Larry C., 5324 - 32nd Ave. S., Minneapolis, Minnesota
 ANDERSON, Marie E., Route No. 1, Maple Plain, Minnesota
 ANDERSON, Ralph F., Houston, Minnesota
 ANDERSON, Rosella Mae, P.O. Box 162, Hudson, Wisconsin
 ANDERSON, Susan L., 1285 W. Minnehaha Ave., St. Paul, Minnesota
 ANDRESEN, David P., 494 College Ave., Beaver, Pennsylvania
 ARANT, Carol R., 2147 South 61st Ave., Omaha, Nebraska
 ARP, Ruth A., Owen, Wisconsin
 ARTHUR, Joseph, 947 Heaton, Hamilton, Ohio
 ASINETER, Andrea J., Box 124, Exeland, Wisconsin
 ASINETER, Bonnie J., Box 124, Exeland, Wisconsin
 ATNEOSEN, Curtis, 2537 Maplewood Drive, St. Paul, Minnesota

BACHER, Dean R., 32 1/2 Pearl Ave., Oil City, Pennsylvania
 BAILEY, Sharen P., 118 North Main, Renville, Minnesota
 BAKER, Neil E., 3317 W. Ohio St., Chicago, Illinois
 BALTON, David H., 195 Sylvan Road, Bloomfield, New Jersey
 BANEK, Jerry L., McLaughlin, South Dakota
 BARKER, Gordon L., 1020 Poplar, Osage, Iowa
 BARTON, Renee K., Route No. 1, Almena, Wisconsin
 BATDORF, Phyllis M., Route No. 2, Verdale, Minnesota
 BATTON, Gayle L., 200 Ridgeley Road, Morgantown, W. Virginia
 BAUMAN, Marion V., 1629 Fifth Street S.W., Minot, North Dakota
 BAWDEN, Gary S., 1014 Greenwood, Maywood, Illinois
 BAYNES, David M., Beulah Beach, Ohio
 BECK, Edna M., P.O. Box 35, Owen, Wisconsin
 BELL, Mark D., Route No. 1, Kalispell, Montana
 BENHAM, Sharon L., Parkway Trailer Court No. 83, Minot, North Dakota
 BIEBER, Alvin P., 764 North Hamline Ave., St. Paul 4, Minnesota
 BISHOP, Delinda, Route No. 3, Newton, Iowa
 BLACK, Daniel A., 1730 Poplar St., Helena, Montana
 BLACK, Karen R., 1730 Poplar St., Helena, Montana
 BLOMQUIST, Arlene G., 619 - 9th St., Rockford, Illinois
 BOLSTAD, Bonnie M., Route No. 1, Savage, Montana
 BORG, Gary F., 8623 North 28th Ave., Omaha, Nebraska
 BORG, Joan L., 8623 North 28th Ave., Omaha, Nebraska
 BOURN, Calvin A., 1589 1/2 Selby, St. Paul, Minnesota
 BRACHMANN, Kenneth N., Route No. 3, Sheboygan Falls, Wisconsin
 BRASS, Jay W., 1002 - 40th Ave. No., Minneapolis, Minnesota
 BREAZE, Georgia J., 6325 South Grant St., Englewood, Colorado
 BREYARD, Margaret L., 862 Ingleside, Flint, Michigan
 BROWN, Darlene J., Wolf Point, Montana
 BROWN, Frank H., 669 Dayton Ave., Milwaukee, Wisconsin
 BROWN, Gloria A., 805 - 7th St., Farmington, Minnesota
 BUCHANAN, Kenneth R., Curtis, Wisconsin
 BUCK, Nancy D., Route No. 1, Box 50, Belgrade, Montana
 BUDKE, Delmar G., 6501 Xerxes No., St. Peter, Minnesota
 BURKHOLDER, Jana Lee 835 McGill St., Orrville, Ohio

CAIN, Lynnette, Route No. 1, Amery, Wisconsin
 CARLSON, Richard E., 851 Milton Ave., Louisville 17, Kentucky
 CLAUSSEN, Rita K., Box 15, Milledgeville, Illinois
 CLIKEMAN, Eva M., 1921 Irving Ave. S., Minneapolis, Minnesota
 CONLEY, Diana M., 1007 Charles Ave., St. Paul, Minnesota
 CONLEY, William W., 1007 Charles Ave., St. Paul, Minnesota
 COSTANZO, Sharon L., 6524 Charles, Omaha, Nebraska
 COX, Ruth L. (Mrs. A.), 1247 Blueberry Hill Drive, Brunswick, Ohio
 CUTCOMP, Marilyn M., 3000 Division, Burlington, Iowa

DANIEL, Carol M., Hamlet, Nebraska
 DARTER, Jerry T., 550 Wilson St., Sikeston, Missouri
 DAVIS, Ronald E., 474 N. Washington St., Janesville, Wisconsin
 DEAN, Carolyn (Mrs. R.), 824 No. Albert, St. Paul 4, Minnesota
 DEAN, Gerry H., 1125 West St., Peru, Illinois
 DEAN, Roger E., 68 Sheridan St., Elgin, Illinois
 DOUGHMANN, Kenneth, 736 St. Jo., Hastings, Nebraska
 DRUMMOND, David L., Box 55, Irvington, Nebraska
 DUNN, Larry D., R.D. No. 1, Canal Fulton, Ohio
 DUTTON, Robert, 1115 Pine St., Boone, Iowa

EASTMAN, Marlyce A., Route No. 2, Park Rapids, Minnesota
 EBERLE, Zoe E., Route No. 3, Cedar Rapids, Iowa
 EDGELL, Virginia J., 122 Pleasant St., Morgantown, W. Virginia
 ELWOOD, Shirley, Route No. 1, Cambridge City, Indiana
 ERICKSON, Karen L., Box 75, Malta, Montana

FARLEY, William H., 719 Railway St., Whitefish, Montana
 FEDDERSON, Donna F., Thomson, Illinois
 FENLASON, Donald W., Route No. 2, St. Cloud, Minnesota
 FENLASON, Carolyn K., Route No. 2, St. Cloud, Minnesota
 FORD, Norman, 1749 Dixdale Ave., Louisville, Kentucky
 FOWLE, George R., 325 North Pebble, Fremont, Nebraska
 FRANKENBERRY, Walter F., 14 Pietro St., Morgantown, W. Virginia
 FRANTIK, Georgiana M., 3617 Kairine Ave., Downers Grove, Illinois
 FRANZ, Geraldine, 2418 Dumesnil St., Louisville, Kentucky
 FREDERICK, Louis (Mrs.), 803 North Albert St., St. Paul 4, Minnesota
 FREDRIKSON, Donna J., 1712 Carl St., St. Paul 13, Minnesota
 FREEMAN, Gary, 1250 No. Lincoln, Fremont, Nebraska

GATCH, Doris M., R.R. No. 1, Aurora, Indiana
 GEARHART, William W., Battle Lake, Minnesota
 GERSTEI, Marlene P., 219 Grace Ave., Canonsburg, Pennsylvania
 GORDON, Dennis L., Route No. 2, Box 219, Selekta, Minnesota
 GOSS, Clark W., Route No. 2, Box 595, Forest Lake, Minnesota
 GOWDY, Judith K., 531 E. Grove St., Oconomowoc, Wisconsin
 GRAFF, Shirley E., 1341 Logan Ave. No., Minneapolis 11, Minnesota
 GULBRANSON, Elizabeth J., 1414 Englewood Ave., St. Paul, Minnesota

HALL, Dorothy H., 3712 Outer Loop, Louisville 19, Kentucky
 HALL, Linda C., 3712 Outer Loop, Louisville 19, Kentucky
 HANSON, Delores E., Leader, Minnesota
 HARLEY, Kathleen S., Box 143, Route No. 3, Lena, Wisconsin
 HARPER, Suanna, 4406 Outer Loop, Louisville, Kentucky
 HARRIS, Diane G., 30 Burwell Ave., Stoney Creek, Ontario, Canada
 HATTIG, Bradford J., Laurel, Nebraska
 HENDRICKSON, Beverly (Mrs. C.), 1397 Hewitt Ave., St. Paul, Minn.
 HEPPNER, Rosa Lee J., Warroad, Minnesota
 HESS, Barbara J., 4321 No. Dayton, Chicago, Illinois
 HIRONS, Jack, 209 Maplewood Ave., Muncie, Indiana
 HOPKINS, Robert D., 525 W. 6th, Fremont, Nebraska
 HOUSDEN, Patricia A., 1309 Wade St., Aliquippa, Pennsylvania
 HUDDLESTON, James L., R.D. No. 2, Box 658, Clinton, Ohio
 HULTBERG, Stanley A., Monticello, Minnesota
 HUNTZINGER, Larry G., R.R. No. 1, Box 517, Fort Myers, Florida

JACOBS, Joyce E., 1227 Hewitt Ave., St. Paul, Minnesota
 JAY, Dona L., 416 Greene St., Jefferson, Iowa
 JENNINGS, John J., 1124 Lane Place, St. Paul, Minnesota
 JENSEN, Joyce M., Route No. 1, Box 113, Tyler, Minnesota
 JOHNSON, Dennis M., 2932 First Ave. S., Minneapolis, Minnesota
 JOHNSON, Muriel L., Marcus, Iowa
 JONES, Louis E., 842 Maple Avenue, Turtle Creek, Pennsylvania
 JONES, Patricia A., 842 Maple Ave., Turtle Creek, Pennsylvania
 JUECKSTOCK, Robert E., 5525 Redman Ave., Omaha, Nebraska

KATSCHKE, Bertha G., Salem, Wisconsin
 KAUFMAN, David P., 506 So. 4th St., Stillwater, Minnesota
 KERR, Gerald E., Rural Route No. 5, Dunfee, Indiana
 KILLIGH, Joann, 5301 Vreeland Road, Ann Arbor, Michigan
 KLAUDT, Gerald L., 2310 S. 10th W., Missoula, Montana
 KNOUF, Carol A., Marengo, Iowa
 KNUDSEN, Evelyn M., Cartwright, North Dakota
 KNUDSEN, Gladys C., Cartwright, North Dakota
 KRATZER, Glenna M., 1744 Van Buren, St. Paul, Minnesota

LAHLUM, Simon L., Minot, North Dakota
 LAIPI, Kathleen S., New York Mills, Minnesota
 LARSON, Jeanette H., Box 42, Baudette, Minnesota
 LARSON, Kenneth R., 767 E. Nebraska, St. Paul 6, Minnesota
 LARSON, Sonja F., 331 Southwest 6th, Cambridge, Minnesota
 LAURIN, Joy C., 1125 - 7th St., International Falls, Minnesota
 LAUTT, Gary B., 249 E. Snelling, Appleton, Minnesota
 LAWRENCE, Marilyn L., 876 McPherson St., Mansfield, Ohio
 LEIFMAN, Joy E., 413 East 11 Mile Road, Royal Oak, Michigan
 LEIGHTNER, Douglas, 5110 N.E. Holman, Portland, Oregon
 LEIMBERER, Clyde A., Hartwick, Iowa
 LEIMBERER, Mary M., Hartwick, Iowa
 LINDIURG, Paul J., Roman, Montana
 LOBERG, David T., 9400 Garden Court, Hales Corners, Wisconsin
 LOBERG, Judith M., 9400 Garden Court, Hales Corners, Wisconsin
 LOMIRE, June F., 1131 W. Scott St., Milwaukee, Wisconsin
 LORD, Ronald, Route No. 1, New Castle, Indiana
 LOW, Diann F., 624 1/2 Main St., Osage, Iowa

STUDENT DIRECTORY... cont'd

MALONE, Beverly L., 8 - 4th St. S.E., Watertown, South Dakota
MALONE, Clifford D., 8 - 4th St. S.E., Watertown, South Dakota
MANN, Michael W., Route No. 2, New Castle, Indiana
MATHESSON, Laurel J., Box 230, Wyoming, Minnesota
MATTHEWS, John F., 4951 Jersey Ave. No., Minneapolis, Minnesota
MCDONALD, Gurley E., 2901 - 39th Ave. S., Minneapolis, Minnesota
McELWEE, Donald E., 20331 Miller Ave., Euclid, Ohio
McKILLIPS, Darwin D., 784 Holton St., St. Paul, Minnesota
MEIER, Carol E., 707 Bellinger St., Eau Claire, Wisconsin
MERRILL, Sharon J., 201 East 4th St., Marshfield, Wisconsin
METCALF, Joanna M., 26 Linden Ave., Vermillion, South Dakota
MICKELSON, Jacqueline R., 838 LeRoy, Muscatine, Iowa
MING, Beverly M., Box 614, Glendive, Montana
MINNICH, Barbara J., Route No. 8, York, Pennsylvania
MOELLRING, Cynthia C., Wildrose, North Dakota
MOELLRING, Justin C., Wildrose, North Dakota
MORIN, Dean E., Arden, Montana
MORRISON, Gaylene, 5405 Redman Ave., Omaha, Nebraska

NELSON, Charles, 1365 Van Buren, St. Paul, Minnesota
NELSON, Marlene B., Clarkfield, Minnesota
NELSON, Rhoda J., Clarkfield, Minnesota
NICHOLS, Judith A., 422 W. Washington St., Corry, Pennsylvania
NICHOLSON, Gerald R., Osakis, Minnesota
NIELSEN, Erik A., 39 Central Ave., Nyack, New York
NUCKOLS, Birgitta (Mrs. B.), 4222 Decatur St., Omaha, Nebraska
NUCKOLS, D. Bryce, 3744 No. 44th Ave., Omaha, Nebraska

O'HARA, James W., 7733 Trion Road, Pittsburgh 37, Pennsylvania
OLSON, Clifford A. Jr., 1407 - 24th Ave. N., Minneapolis 11, Minnesota
OLSON, Kathryn A., Route No. 1, Box 233, Cook, Minnesota
OLSON, Leota, 800 N. Pine, Cranston, Iowa
OPP, Donald W., 808 - 7th St. S.E., Minot, North Dakota
OPP, Gerald R., 808 - 7th St. S.E., Minot, North Dakota

PARDUN, Janet J. (Mrs.), 1478 Hubbard, St. Paul, Minnesota
PARDUN, Neil F., Blairburg, Iowa
PAULAT, Deanna (Mrs. M.), 709 Meadow Lane, Minneapolis, Minnesota
PAULAT, Martin J., 410 Front St., St. Paul, Minnesota
PENDELL, Anne L., 2495 Harrison Road, Columbia 4, Ohio
PHILLIPS, Joel B., 3341 Kay Drive, Monroe, Michigan
PIHL, Charlotte A., 1601 S. Cook, Spokane, Washington
POST, Eugene C., 133 Hillside Ave., Mt. Vernon, New York
PROWSE, Ruth (Mrs. N.), 819 Van Buren Ave., St. Paul, Minnesota
PRUESSNER, Fred M., R.F.D. No. 1, Charles City, Iowa

RADFORD, Gayle T., 1544 N.E. 30th St., Pompano Beach, Florida
RAND, Hazel M., 814 Girard Ave. No., Minneapolis, Minnesota
RASMUSSEN, Wayne R., 893 Fry, Sioux Falls, South Dakota
RAYGOR, Lance J., 751 Pelham Blvd., St. Paul 14, Minnesota
REAVES, Bobby H., 4157 Washington St., Minneapolis 21, Minnesota
REIBLING, LeRoy F., 16681 Tracey, Detroit 35, Michigan
REICH, Estella, 1346 West Minnehaha Ave., St. Paul 4, Minnesota
REIGEL, Sally J., R.R. No. 3, Box 171, Marshfield, Wisconsin
REISIG, E. Dianne, Savage, Montana
REYNOLDS, Faye E., 2301 Maryland, Superior, Wisconsin
RIDDLE, Diane (Mrs.), 3405 Redman Ave., Omaha, Nebraska
RIDDLE, Ruth (Mrs.), Fank, Nebraska
RISCHER, Helmut E., 1302 Hubbard Ave., St. Paul 4, Minnesota
ROBINSON, Dorothy L., Route No. 2, Wadsworth, Ohio
ROHLETTTER, Ronald W., White Sulphur Springs, Montana
ROWE, Charles, P.O. Box 284, Turin Lake, Wisconsin
RUDE, Joyce, 940 Beech St., St. Paul 6, Minnesota

SAUNDERS, Richard A., 2307 - 13th Ave. S., Minneapolis, Minnesota
SCHAEFER, Carole A., 1110 No. 25th St., McAllen, Texas
SCHELL, Shirley J., Belgrade, Montana
SCHOCK, Carol M., Wolf Point, Montana
SCHOENHERR, Linda D., 1020 - 4th Ave. N., Sauk Rapids, Minnesota
SCHRIEBER, Richard D., 5222 Beaver St., White Bear, Minnesota
SCOTT, Bonnie J., R.F.D. No. 1, Chadron, Nebraska
SEARS, Larry C., 11710 Spinning Ave., Ingelwood 4, California
SEELEY, Norma J., 8 Oak Hill Dr., So. St. Paul, Minnesota
SHAW, Margaret R., Lencroft Hostel, Kodaikanal, S. India

SHAW, Mary Jo, Box 21, Robins, Iowa
SHELDEN, E. Lorraine, 1640 - 14th St., Port Arthur, Texas
SHEPSON, Elaine (Mrs. C.), 806 No. Albert, St. Paul, Minnesota
SHOWELL, David S., 117 S. Reed St., Denver 26, Colorado
SHULL, Lowell W., 412 E. Winona, Frederic, Wisconsin
SKOR, Jon E., Wildrose, North Dakota
SLATER, Richard H., 1171 Pacific, St. Paul, Minnesota
SMALLEY, LaVerne L., Route No. 2, Boone, Iowa
SMITH, Darrell J., 151 Freda St., Pittsburgh 35, Pennsylvania
SMITH, Donald D., Tracy, Minnesota
SNYDER, Donn W., 4505 Rochester Road, New Brighton, Pennsylvania
SOMERS, R. Iris, 1201 Moultrie, Mattoon, Illinois
SPENCER, David R., Peru, Iowa
SPILDE, Duane J., 1218 - 35th St. N.E., Cedar Rapids, Iowa
STANTON, Loretta L., 806 - 7th Ave. W., Kalispell, Montana
STENLUND, Gary L., Princeton, Minnesota
STIGERS, Frixie M., Box 114, Beaverdale, Pennsylvania
STILES, Shirley J., 1103 S. 3rd St., Stillwater, Minnesota
STUCK, Nelda (Mrs.), 1076 Osceola Ave., St. Paul, Minnesota
STUCK, Robert K., 1076 Osceola Ave., St. Paul, Minnesota
STUMBO, Delores J., Box 466, Okaloosa, Iowa
SUNDERBERG, Dennis E., Route No. 4, Box 190, Little Falls, Minnesota
SWANSON, Douglas B., 3142 Colfax Ave., S., Minneapolis, Minnesota
SWENSON, Georgia M., Box 194, Barkus, Minnesota

TAYLOR, Alan K., 425 S. 15th St., New Castle, Indiana
TAYLOR, Thomas D., 65 Beverly Ct., Hamilton, Ohio
THOMAS, Emily A., 3849 N. Odell Ave., Chicago, Illinois
THOMPSON, Suzanne C., 1558 Blair Ave., St. Paul, Minnesota
TREECE, James W. Jr., 1809 E. 41st St., Minneapolis, Minnesota
TURNER, Seth S. Jr., 801 Division St., Port Huron, Michigan
TWIST, Earl J., Manning, North Dakota

UNDERWOOD, Jack D., 475 Crystal St., Akron, Ohio
ULRICH, Kenneth H., Winside, Nebraska
UNRUH, Dorothy, 1718 Bower Ave., Bismarck, North Dakota

VALDER, Carol D., Box 97, Bethel, Minnesota
VAN WAGNER, Kent, 415 N. Lynn St., Bryan, Ohio
VISCHER, Harold H., 838 LeRoy Ave., Muscatine, Iowa
VOLSTAD, M. Ruth, 1512 W. Idaho Ave., St. Paul, Minnesota
VYTLACIL, Patricia A., Warroad, Minnesota

WALKER, Mark A., 3916 N.W. 9th, Oklahoma City, Oklahoma
WALKER, Nancy A., 3916 N.W. 9th, Oklahoma City, Oklahoma
WALL, Ruth, Frazer, Montana
WANGEN, Viola G., Summit, South Dakota
WATTS, Willie D., 6721 Perry Ave. N., Minneapolis, Minnesota
WELK, Madelon L., 831 N. Howell, St. Paul, Minnesota
WENTWORTH, David D., 1884 E. Montana, St. Paul, Minnesota
WENTWORTH, Sylvia J., 1884 E. Montana, St. Paul, Minnesota
WERNBERG, Evangeline M., 207 Hollister Ave., Rockford, Illinois
WETMORE, Joanne R., Viborg, South Dakota
WHITE, Donald G., Route No. 3, Verdale, Minnesota
WHITE, Linda L., 121 W. McKinley, Libertyville, Illinois
WHITE, Vaughn E., 3668 Cedarwood Lane, Dayton, Ohio
WIENEKE, Darold A., 5237 Edgewood Ave. N., Crystal 27, Minnesota
WIGGERS, Loy M., 790 Cedar St., St. Paul, Minnesota
WILLIAMS, Richard Dale, 912 Inverness Ave., Westmont, Illinois
WILLIAMS, Richard Lee, 4532 New Road, Youngstown, Ohio
WILLIAMSON, Robert W., 1242 Crawford Dr., Billings, Montana
WILSON, John A., 712 Hiawatha St., Minot, North Dakota
WOLSTAD, Lois M., Box 54, Arlee, Montana
WOLFSTELLER, Patricia J., Maple Lake, Minnesota
WOOD, Bruce A., 1498 Hague Ave., St. Paul, Minnesota

YEATS, David G., 2045 N. 65th Ave., Omaha, Nebraska
YEATS, Mary K., 2045 N. 65th Ave., Omaha, Nebraska
YOUNG, JoAnn R., 7601 Folk Ave., Maplewood 17, Missouri

ZWICKEY, Janet M., 1271 East 12th Ave., N. St. Paul 9, Minnesota