

Shield

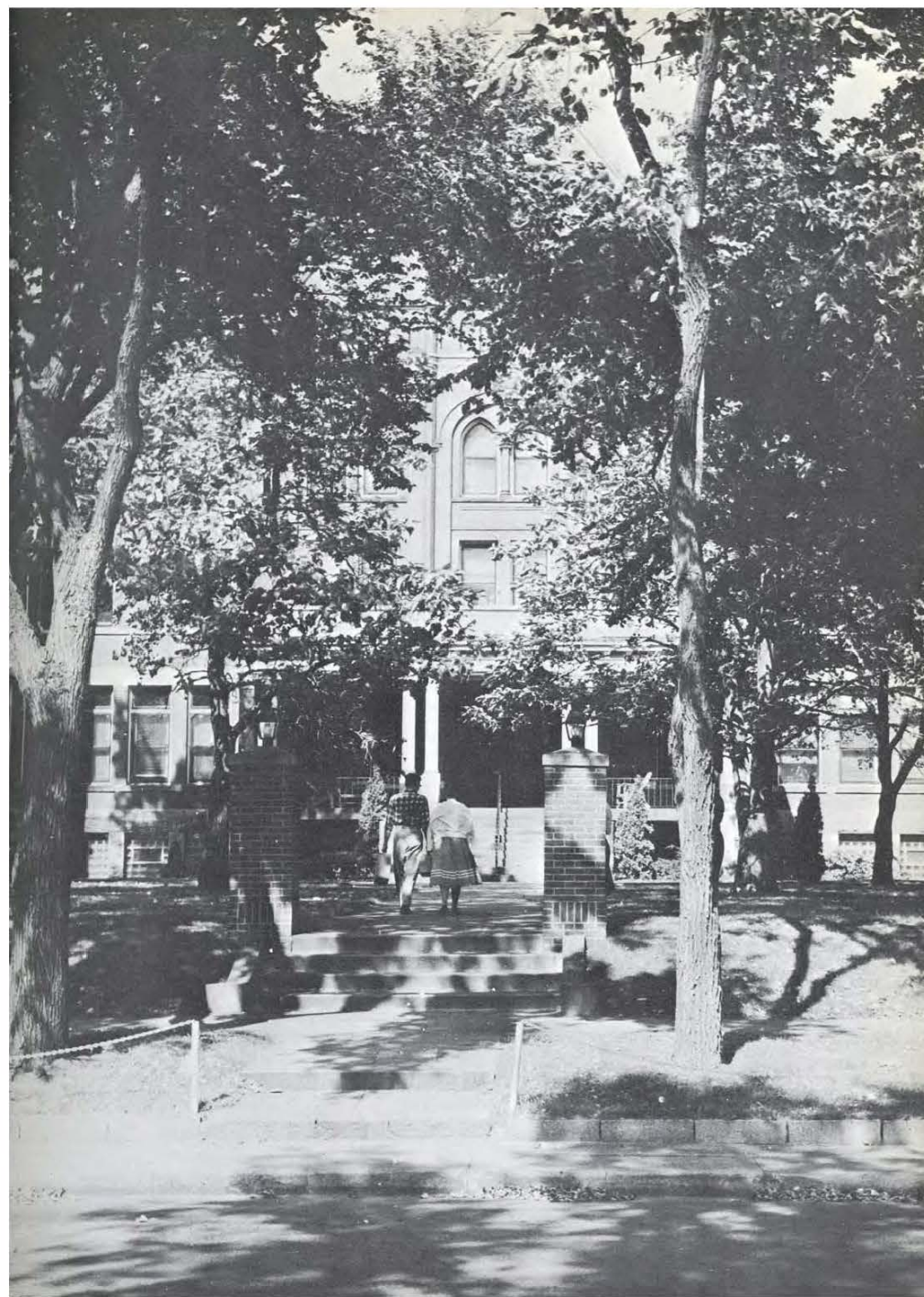
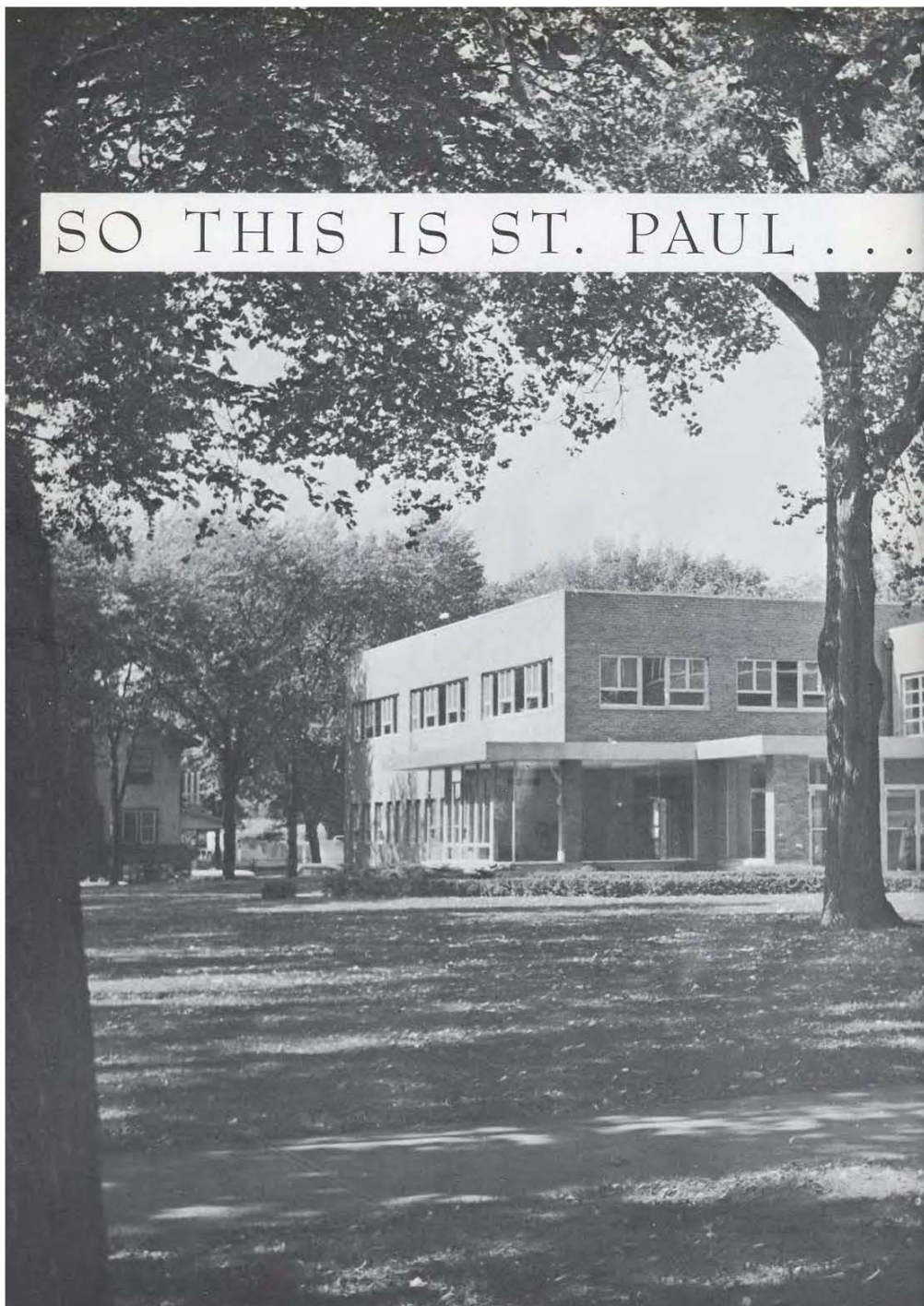
SHIELD

St. Paul Bible College
St. Paul, Minnesota
Volume XXI



Editor: KAREN GREGERSEN
Assistant Editor: HAROLD BEATTY

SO THIS IS ST. PAUL . . .



Dedication



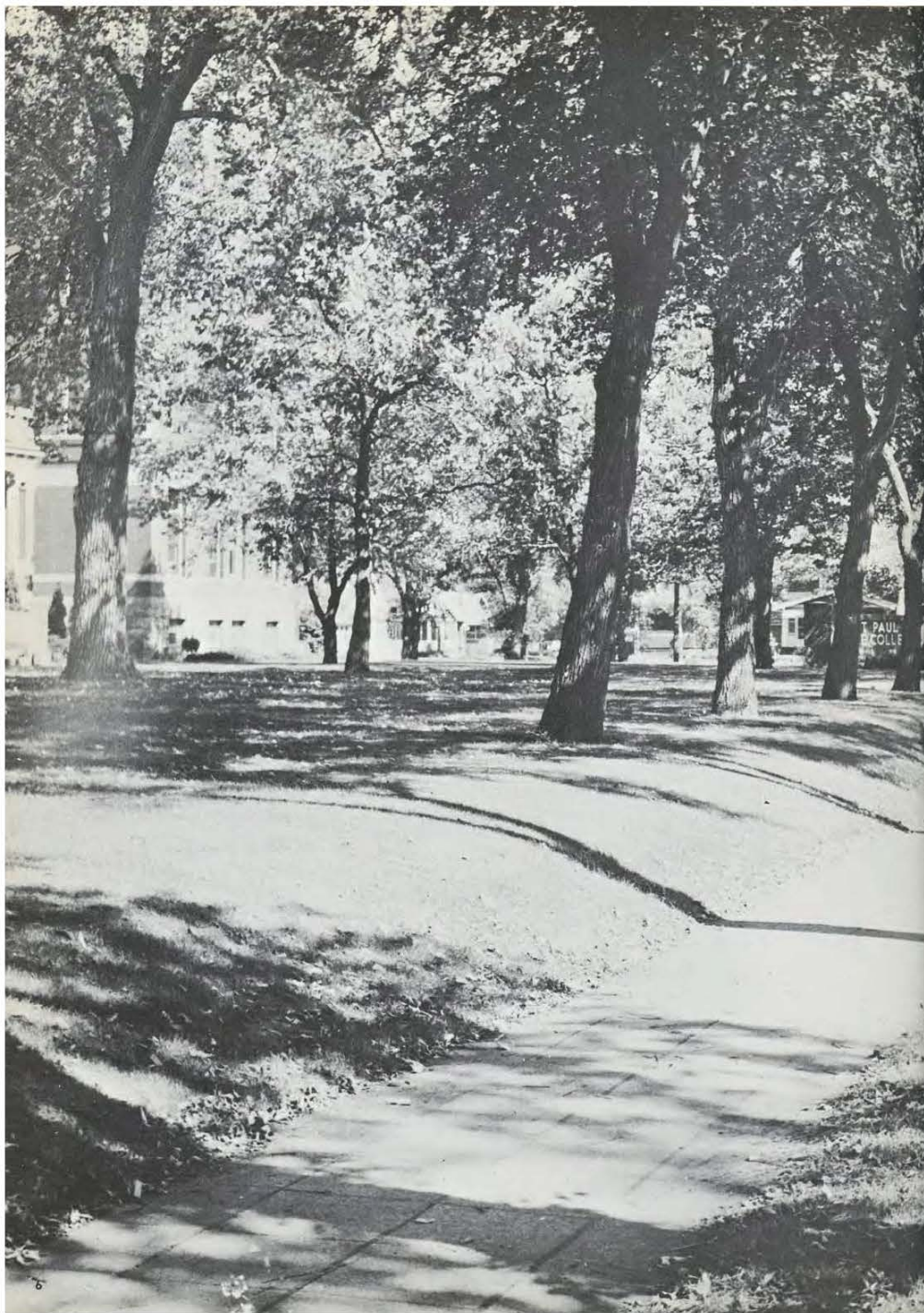
Throughout many years you have been a servant of Christ on home and foreign soil, as dean, instructor, missionary, and finally as president of our college. We honor you for the way you have exemplified the spirit of our school by your evident interest and fruitful activity in the promotion of missions. We note with pleasure your concern for us as individuals both for our own sakes and because of what we will some day be for Christ. We are warmed by your own kindly manner and challenged by the example you have given us of unruffled, imperturbable trust in God. In appreciation for your life before us as a servant of God, we dedicate our year-book to you, Dr. George D. Strohm.



Dr. Strohm spends much of his time on campus in conference with administration concerning school policy and other matters directly related to the college.

Yet, the interest of our President is ever person-centered and concerned with students as individuals rather than as a mere student body. This becomes evident, as he relates to a great percentage of them, their family history and their own personal history from the time he saw them take their first steps in some obscure town. Therefore, no work is so important as to exclude time for students.





FOREWORD

This book is presented with the intention of revealing the attitudes, atmospheres, and underlying currents that make up the St. Paul Bible College. The students themselves, the way they live, and the things they love and do must be included with curriculum and regulation to portray the life of a school. As we have attempted to do this in the pages ahead, we want you to agree

"So This Is St. Paul!"

CONTENTS

The PERSONALITY of St. Paul

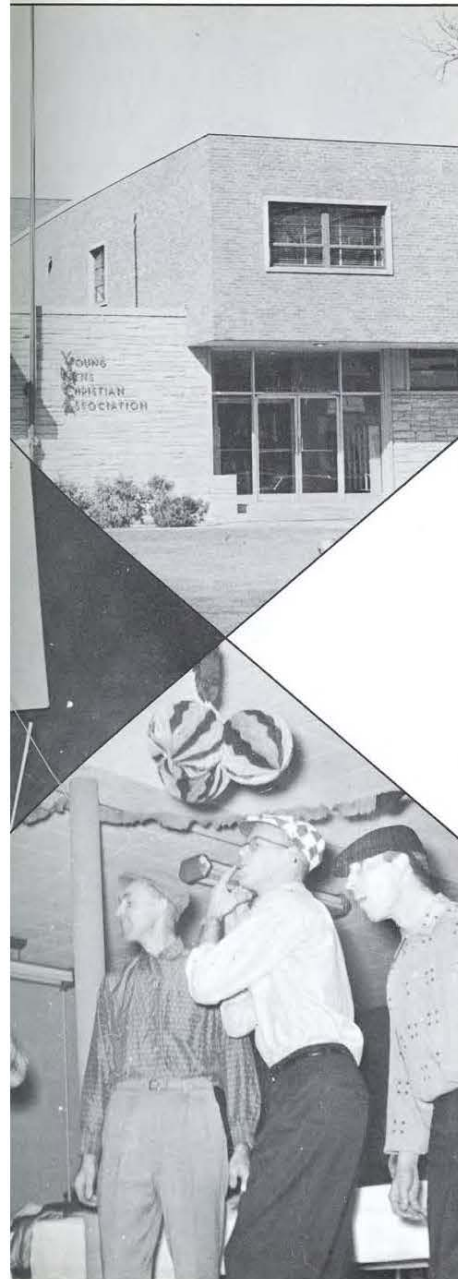
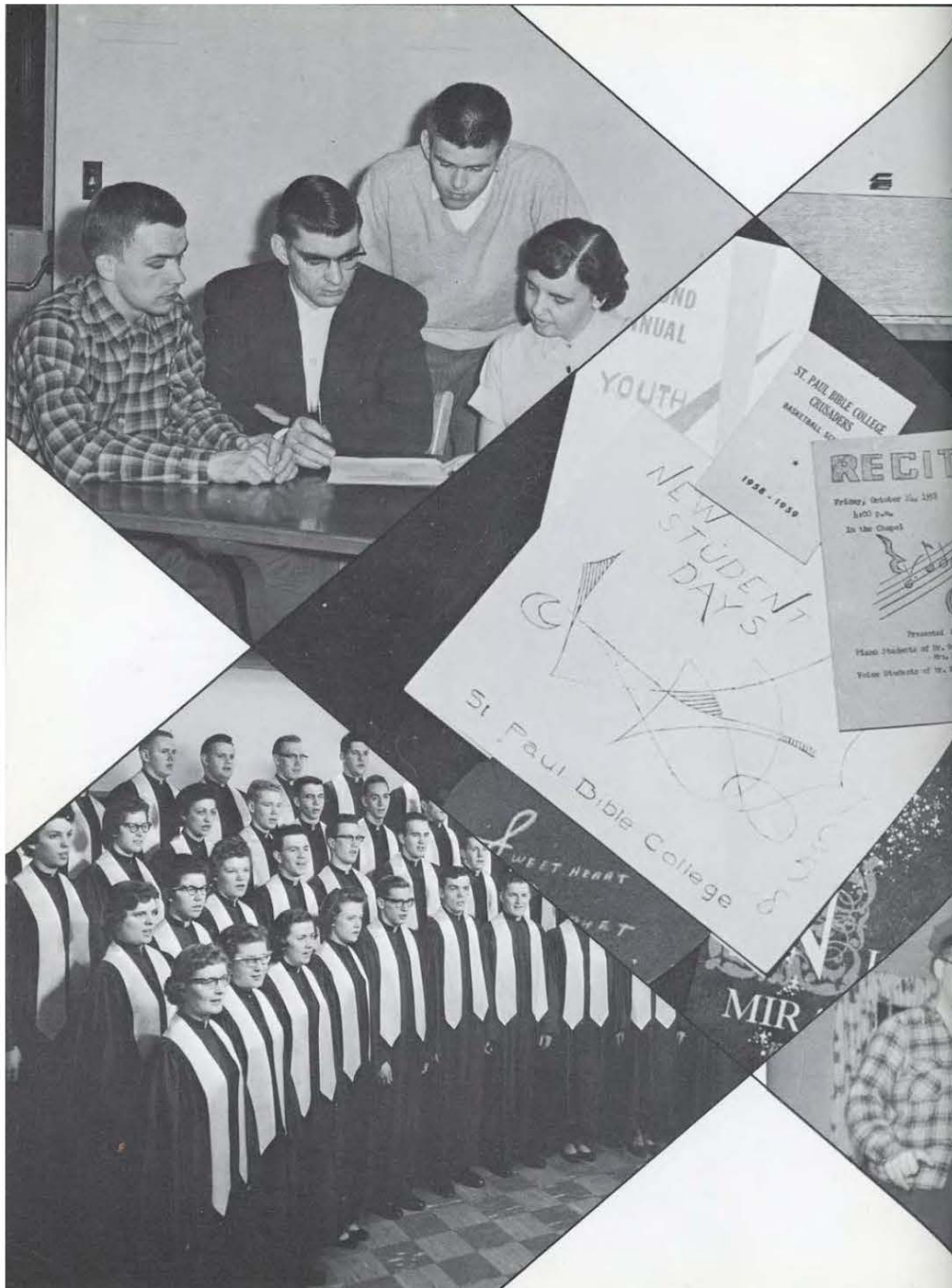
The HEART of St. Paul

The DELIGHT of St. Paul

The VISION of St. Paul

The HOPE of St. Paul

The SUCCESS of St. Paul



THE PERSONALITY

of St. Paul

*Is expressed by
the spirit of love,
of friendship,
of joy in Christ
that characterizes
the children of God.*

FALL



"He hath made everything beautiful in his time." - Bible



"Pancakes and maple syrup! They never tasted this good at home."



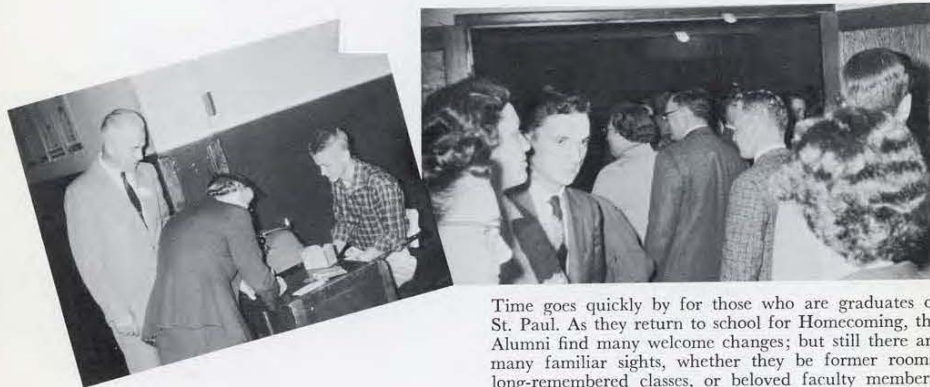
"Your wienie won't roast up there, Marlene."



It's all in knowing how.



Note the popcorn—staple diet for all dormitory students.



Time goes quickly by for those who are graduates of St. Paul. As they return to school for Homecoming, the Alumni find many welcome changes; but still there are many familiar sights, whether they be former rooms, long-remembered classes, or beloved faculty members. They discover many changes in one another, yet rejoice to see how God has laid His hand upon so many graduates, to nourish them in the truths of the Word and to place upon them positions of responsibility in the work of His Kingdom. As they realize how quickly go the years after graduation, they realize and are grateful for the training and disciplines of life they learned while still in school.

Fall Revival

Rev. Harry L. Turner, President of The Christian and Missionary Alliance, was God's chosen servant as speaker for the Fall Revival meetings. His messages presented the work of the Holy Spirit in the life of the Christian, and stressed the necessity of spirit-filled men and women to do the work of Christ. Many students were made to realize how much the Spirit of God is hindered by small things—"the little foxes that spoil the vine".



The source of blessing in special meetings is not to be found in any speaker; but these fellows learned and grew as they personally sought the mind of the Lord in private. Not only was personal petition made, but some of the best and most enriching times of prayer were those spent before the Lord in the days and months preceding the meetings as His favor and His blessing upon the school were sought.



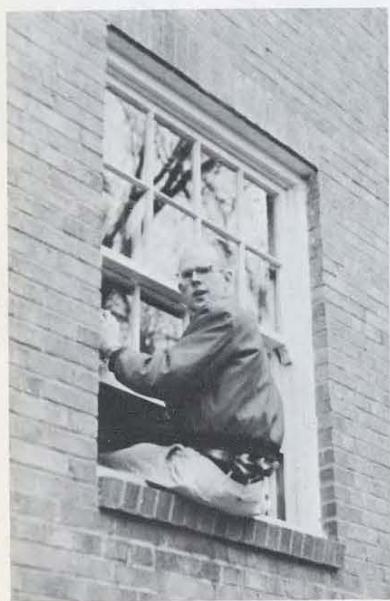
No Windex could ever make a window shine like a dose of Mac's elbow grease does.

"Light is the task when many share the toil." — Iliad. All join in — student, faculty, staff member — to make the school shine, inside and out.

Campus



No spot is too remote, too inaccessible for the undaunted SPBC student to reach.



The teachers take an active part too — only wouldn't this be called sitting down on the job?

Raking leaves is the major job in the fall. It takes most of the boys most of the morning to make the grass visible once more.



Leaves might be light objects when there's only a few of them. But a job like this takes muscles, especially after the first twenty times.



Light-hearted talking and companionship makes each task enjoyable. Work becomes fun and is soon completed.

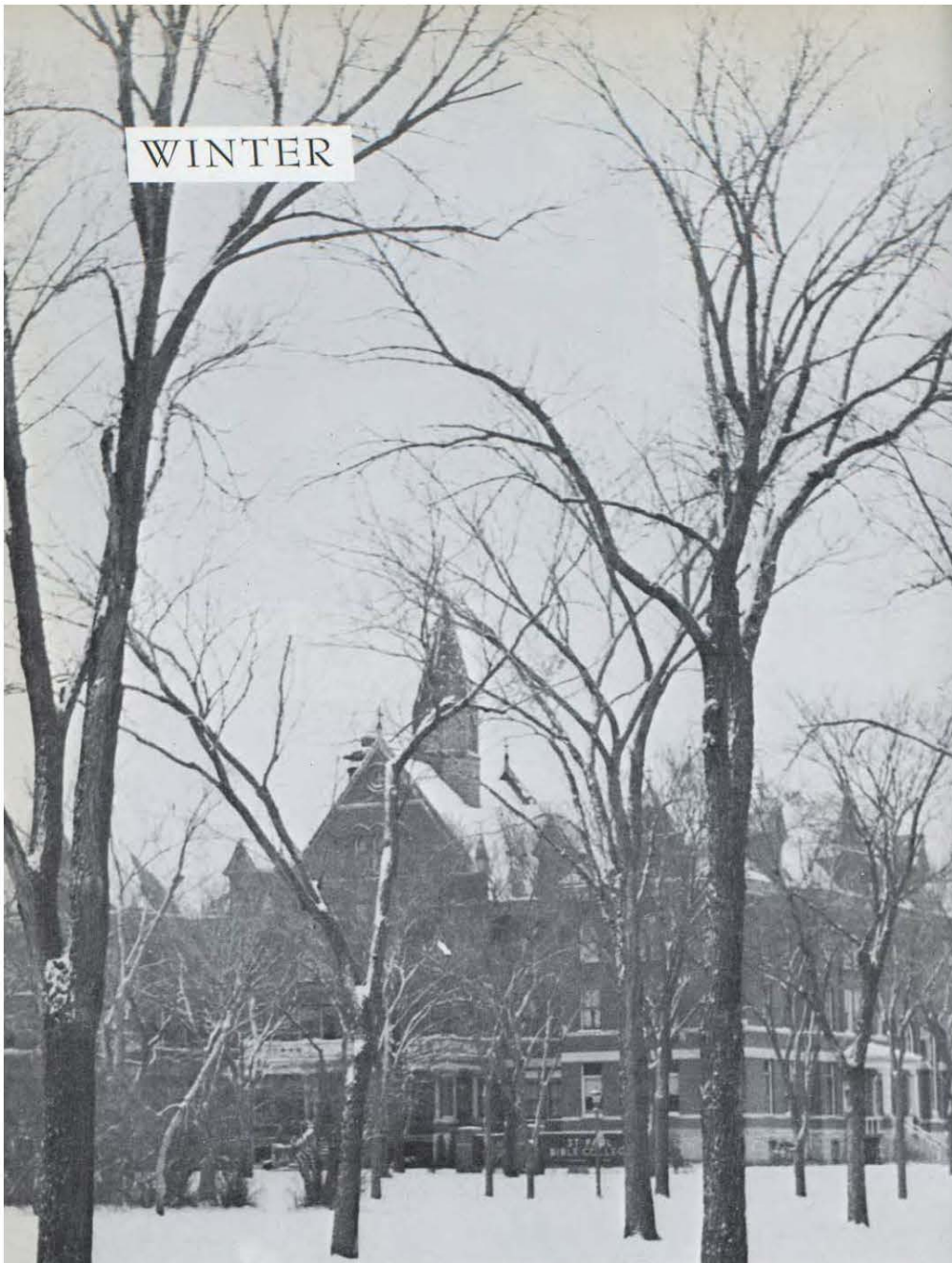
Day



The dining hall swells to hold all the outside students and their families who join the crowd at lunch time.



WINTER



"While the earth remaineth, seedtime and harvest, and cold . . . and winter . . . shall not cease." - Bible



Even the faculty around SPBC gets carried away with the vacation spirit — way far away — from the looks on those faces!

Not a trace of a bedspread
Could be seen 'neath the piles
Of shirts, skirts, ties, and dresses
That were stacked up for miles.
In the mind of each student,
Wholly brain-washed from studies,
Were the visions of home,
Of their families and buddies.
Thoughts of sleep were forgotten;
Fun and frolic were in style.
Everyone felt like laughter
So they had it — AND HOW!



Study? the week before vacation?!? A scavenger hunt sounds like more fun. C'mon, we're going to beat your team!



"And taught by Thee the Church prolongs
Her hymns of high thanksgiving still."

Car number 161939 preparing to leave St. Paul.
All aboard for Osage, Blairsburg, Lincoln, Ritchie
and points west!

Nights Before

'Twas the night 'ere Thanksgiving
Vacation began,
Every creature was stirring,
Every child, every man.
In the dorm bedlam reigned
And confusion was queen;
Not a semblance of order
Remained to be seen.

The Day

Morning came—with its classes
but they were soon done.
At last — at long last —
vacation had come!





Christmas

Christmas in the lives of the children of God is a time of special gladness. With hearts made light and free because of Christ they go about the pleasant tasks which are preparatory to Christmas. The trees go up and tables are set in anticipation of real Christian fun and fellowship. Part of the joy of the week is in the opportunity of sharing—sharing with international students far from home the warmth of Christian friendship. But of all Christmas joys, none can compare with the Christians' privilege of singing praises to the King of Christmas, the Lord Jesus Christ. The exultant strains of Handel's "Messiah" convey His matchless glory to a people who love His name.



Week

The traditional Christmas turkey is enjoyed against a backdrop of "The Night of Miracles". Later around the Christmas tree another cherished tradition is followed, the one begun with God's gift of His only Son, when the girls express something of their love and appreciation to their dean by a gift—a nice, warm electric blanket. In the last nights before Christmas on campus comes to an end, the tree is the center of singing and cheerfulness — and prayer, as thoughts turn to home and unsaved friends and loved ones. Fittingly enough the choir echoes, as their challenge before the start of vacation, the living message of Christmas, "Tell them the story of Jesus".



"Ye Olde Dining Halle"—
The importance of this place
in college life is not soon
forgotten by former students.



Alumni Winter Events

The lineup!—Formidable and brave must they be as they face
the St. Paul CRUSADERS!



"And there goes Huntzinger in for the rebound . . . and the
Alumni KEEP the ball!"

Mid-Winter Revival



Rev. Gordon A. Skitch came to us from
Kitchener, Ontario, with a broad smile, a
good sense of humor, and expectancy that
the Spirit of God would move mightily
among us. His faith and the prayers of
Christians were honored as God gave revival.



The messages from the pulpit were practical and challenging,
ever accompanied by a distinct sense of the presence of God.

So freely did the Spirit work and so real
were the victories that Rev. Skitch laid
aside his messages several times to make
way for testimonies and confessions.
Though services lasted until late hours,
the joyous reports did not decrease in
numbers or fervency.



Rev. Skitch showed his love by many small tokens.
Cherry chocolates graced the dining hall tables Friday
night and several huge Nestle's chocolate bars provid-
ed a pleasant treat for everyone after the final meeting.



"Makes me love everybody" was on every-
one's lips. Led by Rev. Skitch as no one else
could lead it, "The Old Time Religion" was
the theme song of the week.



Sports



Standing left to right: W. Toavs, D. Sundeen, C. Fredstrom, H. Beatty, M. Soderquist, R. Bailey, B. Stanton, G. Stenlund, L. Swanson, K. Gowdy, R. Solvig. Kneeling: Coach, Don Cameron; Manager, R. Deckert; Athletic Director, Joe Tewinkle



Most valuable player:
Claire Fredstrom

1958-1959 SEASON

SPBC	OPPONENT
71	32 Minnesota Bible College
75	64 Concordia College
88	50 Pillsbury Bible College
61	52 U. of Minnesota, St. Paul Campus
56	49 Northwestern College
70	77 Bethel College
55	52 U. S. Navy Base
82	72 Dr. Martin Luther College
61	46 North Central Bible College
70	45 Alumni
86	53 North Central Bible College
68	64 U. of Minnesota, St. Paul Campus
76	71 Luther Seminary
68	73 Northwestern College
77	68 Pillsbury Bible College
48	61 Hamline University "B" (Exhibition)



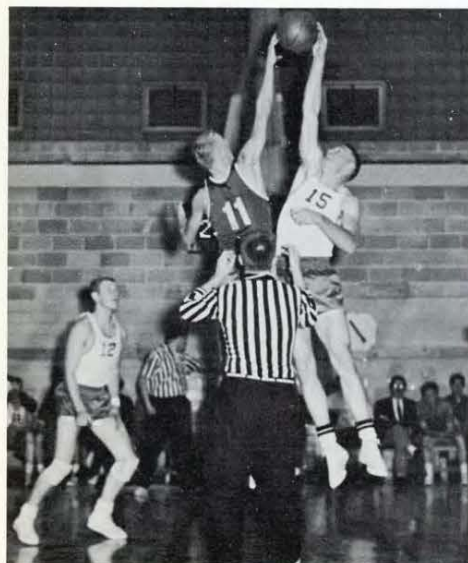
"Come on gang, let's go!"



Cheerleaders: J. Hanke, J. Schwoch, J. Frankenberry, J. Duncan, G. Greiner

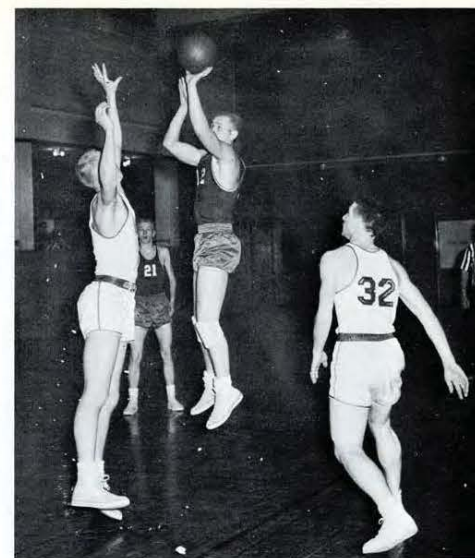
The Crusader's basketball season began with an overwhelming victory against the Minnesota Bible College. The following game at Concordia was a close one, taken by our fellows in the last five minutes of the game. Pillsbury College and the U. of Minnesota, St. Paul Campus were rather easily defeated. Then we faced Northwestern; exciting from the start, this game ended in an exhilarating victory.

Claire goes in for another easy lay-up.



Jump Roger! !

As we traveled to the Hamline campus to play their "B" team, we met our Waterloo as we went down to our first defeat. Playing Bethel, we were again defeated although we put up a stiff fight. Starting with the U.S. Navy Base, we began another string of victories. Dr. Martin Luther College bowed to us in another close match, then North Central twice and the Alumni. Playing the U. of Minnesota, St. Paul Campus, we found a real opponent and a game that was rugged right down to the wire. Next we faced Luther Seminary, one of the best teams of the season. Because our fellows were really hitting, we won without much trouble. Northwestern loomed again on the horizon, causing a real spirit of competition. After a hard fight, we had to bow in defeat. The last game was Pillsbury and we ended our season with an easy victory.



"Don't just stand there, do something, Claire."



It takes more than three to stop Gowdy!



"Catching flies, Les?"



Mac Soderquist 6'2"



Roy Solvig 5'8"



Blythe Stanton 6'1"



Orrel Steinkamp 5'11"

THE TEAM



Ken Gowdy 5'9"



Roger Bailey 6'2"



Joe Beatty 6'1"



Co-captains
C. Fredstrom, D. Sundeen



Claire Fredstrom 6'



Dave Sundeen 5'9"



Gary Stenlund 6'1"



Les Swanson 6'



Warren Toavs 5'9"



Standing, left to right: Co-coach, Miss Decker, P. Haws, E. Hubin, N. Noble, D. Van Wormer, M. Kinnick, S. Miller, Co-coach, Mr. Tewinkle. Kneeling: M. Harlin, B. Ming, J. Schwoch, P. Stuck, C. Carlson, C. Schock, J. Frankenberry, A. Nyberg

Girl's Basketball

1958-1959

SPBC	OPPONENT
41	28 Faculty-Staff
46	41 Pillsbury
38	36 Northwestern
50	49 Bethel
28	41 Augsburg
27	24 Bethel
31	40 Northwestern
39	13 U. of Minnesota, St. Paul Campus
31	19 Pillsbury



"Two more points, Jeannie!"



"Side baskets don't count, Janet, keep your eyes on the one ahead."



"Somebody go for that rebound!"

Sweetheart Banquet

A girl, a formal, flowers . . . her fellow,
candlelight, a Sweetheart Banquet —
what a perfect setting for Valentine's
Day.



"I crown Thee Queen Audre and King Doug, King and Queen of the Sweetheart Banquet."



Unto Dan Cupid—alias Fudd—belongs the credit for
many well matched couples.



"I can't go out with you 'cause I'm your other
end" . . . so goes the song about the worm, sung
by J. Johnson of the MacPhail school of music.



Plenty of chicken makes
for one happy crowd.

SPRING

"For, lo, the winter is past, the rain is over and gone; the flowers appear on the earth; the time of the singing of birds is come." - Bible

Spring Recitals

Laurel Matheson, Assistant



Lydia Lee, Soloist



Carol Meacham, Soloist



The soul of music slumbers in the shell,
Till waked and kindled by the Master's spell;
And feeling hearts—touch them but lightly—pour
A thousand melodies unheard before! Rogers

Helen Yip, Assistant



Second

Annual

Youth

Conference



Off to Simpson for another service with Rev. Harry Hardwick, President-elect of the College, as the speaker.



What an early morning hike does for one!

The panel discussions and informal fellowship were a big part of the conference.



Softball and football were a pleasant contrast to all the weighty thinking in the discussion groups.



World Missions in miniature climaxed the conference. The theme, "Is It Nothing To You?" was made alive by the Choral Club, student speakers, a dramatization of the Bible, and the final challenge by Mr. Hardwick.



The young people left with some regret, yet, were anxious to go home and live out the new challenge they had received to proclaim Christ.





Back Row, left to right: B. Porter, R. Bush, D. Sundeen, F. Ohm, R. Severson, E. Colby, D. Yates. Front Row: J. Lewis, G. Nagel, F. Moore, M. Lundell

Student Council

"So nigh is grandeur to our dust,
So near is God to man.
When Duty whispers low, 'Thou must',
The youth replies, 'I can'."—Emerson

Important in the development of a Christian is his gradual acquisition of responsibility. It is this necessary part of his education which the Student Council strives to provide, both for its own members and for the remainder of the student body. Such activities as New Student Days and Youth Conference call for such student leadership and responsibility. Also, this student governmental body is the students' representation to administration. When problems or suggestions arise concerning the college or the student or relations between the two, it is this channel through which satisfaction is secured.

The Student Council is seeking to further the growth of students by encouraging and activating increased student leadership within each student organization.



Officers: B. Porter, Treasurer; G. Nagel, Vice president; J. Lewis, President; F. Ohm, Secretary

They desire for them to create and establish their own rules and goals as is being done, for example, in the women's dormitory council. They are working toward an organization which will represent all other organizations on campus as well as classes and individual students. It anticipates the day when it will represent the students in their responsibility of administering student finances represented in the activity fee.

In this manner students are given a chance to "grow up", to be prepared to face their tasks as Christian leaders among people who desperately need young men and women who will assume authority for the sake of Christ.



Back Row, left to right: R. Horst, D. Olson, A. Johnson, Miss Decker. Second Row: E. Driemeyer, I. Howe, E. Colby, J. Schwoch, R. Skaggs, P. Stuck, S. Hanaford. First Row: D. Van Wormer, C. Meacham, R. Ohm, M. Jones, K. Gregersen. Freshmen elected second semester were D. Brown, M. Gerstel, C. Green, and J. Duncan.

Dormitory Council

Sticky - - - but good!

"We keep you quiet, that's for sure—someone has to do it;
But there is more we find to do, and it is time you knew it.
We know that in your busy life you need some times of fun;
So scavenger hunts and taffy pulls we have for everyone.
We plan the times of prayer you love and seek to find new ways
That we can help you meet the Lord in these your college days.
We seek through all our varied tasks to make the dorm a place
Which shows without a spoken word the touches of His grace."



French poodle—or Alice?

That which precedes handbox styles.



Studious?





Co-Laborers

The wives of fellows on campus are often left without too much part in school activities. Within the organization of co-laborers they have opportunity to unite for time of Christian fellowship and prayer. In an informal atmosphere they discuss the problems and activities common to each one and enjoy together the presence of the Lord.



Speech Club

Within the general framework of the speech club are many smaller groups. Participating in inter-collegiate activities are the debaters, who this year discussed the possibilities of prohibiting the production of nuclear weapons, and the oration, participating in the annual W.C.T.U. contest. The dramatists presented a stage production of "A Man Called Peter." A fourth group developed the art of interpretive readings. These various forms of speech activity are excellent preparation for confidence and poise in the service of Christ.

Back row, left to right: H. Vik, G. Thielbar, N. Pardun, B. McDonald. Second row: D. Loberg, H. Crees, Mrs. Greene, P. Petersen, M. Harlin, J. Meltzer, J. Frankenberry, A. DaMoude, E. Bower, P. Sicchert. Front row: D. Paulson, A. Cantril, B. Aspeter, M. Flodman, D. Wells, E. Dincau, P. Frederick

Choral Club



Back Row, left to right: G. Brown, R. Severson, M. Soderquist, M. Westlund, E. Oscarson, T. Kyle, G. Stenlund, C. Hendrickson, S. Watne, M. Drollinger, A. Cantril. Third Row: J. Frankenberry, E. Needham, P. Stuck, D. Bush, L. Swanson, J. Beatty, T. Wendlegast, C. Patterson, E. Gehl, D. Vanwormer, A. Nyberg. Second Row: E. Moore, L. Matheson, J. Skifstad, P. Rausch, M. Bakk, D. Loberg, D. Yates, P. Gunther, M. Kyle, D. Brown, C. Johnson. First Row: M. Gerstel, P. Peters, C. Meacham, A. Bloomquist, D. Leightner, P. Radford, S. Williams, D. Olson, B. Aspeter, W. Smith, J. Duncan



Brass Sextet: Back Row: M. Soderquist; Second Row: L. Swanson, T. Kyle; First Row: R. Bush, C. Patterson, M. Davidson



Choral Club Accompanist: L. Matheson



King's Messengers Quartet: C. Patterson (accompanist), R. Bush, J. Beatty, C. Hendrickson, L. Swanson



A featured part of the Choral Club program is the blended tones of the trumpet trio. The colorful arrangements of well-loved hymns, played by Mac Soderquist, Tom Kyle, and Les Swanson, are a pleasing addition to sacred music.

The officers of the Choral Club are (standing) C. Hendrickson, treasurer; P. Gunther, vice-president; (sitting) T. Kyle, president; M. Kyle, secretary; A. Nyberg, social chairman; and P. Stuck, librarian.



Carol Meacham, soprano soloist Alice Cantril, violin soloist Paul Gunther, bass soloist Merrill Bakk, tenor soloist



Girl's Choir



Back Row, left to right: L. Sackett, I. Honeywell, A. Hedrick, R. Horst, S. Pahl, M. Draper, A. Pendell, R. Kelck. Third Row: R. Jenkins, E. Hubin, L. Curtis, E. Bower, M. Ford, M. Harlin, M. Livingston, N. Noble, J. Hanke. Second Row: Mrs. Brown (director), R. Skaggs, S. Miller, L. Smith, E. Hafele, C. Green, C. Schock, A. Black, M. Eastman, B. Kilpper (accompanist), M. Kinnick, L. Lee, M. Jones, P. Jones, A. Nelson, A. Gatten, E. Driemeyer, S. Hanaford

Orchestra



Back Row, left to right: C. Meacham (accompanist), Mr. Flegle (director), J. Skor, B. Gray, M. Eastman, D. Paulson, A. Nyberg. Second Row: R. Trimble, J. McKean, R. Conley, D. Brown, M. Kinnick, R. Gray, M. Harlin, E. Oscarson. Front Row: N. Noble, C. Schock, J. Walker, A. Nelson, P. Rausch, A. Cantril



Merle Kinnick and Lydia Lee solo in the Girl's Choir, bringing encouragement and comfort to those who listen.



With instruments of music praise is brought to God by Paul Rausch, Ann Nelson, Alice Cantril, and Marilyn Harlin.



Lydia Lee, accompanist, Helen Yip, James Yang, and Benjamin Chan bring to their hearers a sense of worship even though they sing in their own native language.



"Would-be Bankers"—K. Gregersen, Editor; J. Beatty, Assistant Editor; L. Swanson, Business Manager; R. Deckert, Booksales Manager; D. Sundeen, Ads Sales Manager

Shield Staff

Long hours, ingenuity, and prayer — tempered with good sense of humor — are what is necessary to put together a yearbook that will please an expectant college body and glorify the name of Christ.

"Shield Supporter #1" Mr. Wenninger, Advisor



"I get your point . . . I think"—C. Patterson, Artist; A. DaMoude, Class Editor; M. Harlin, Copy Editor; T. Kyle, Missions Editor

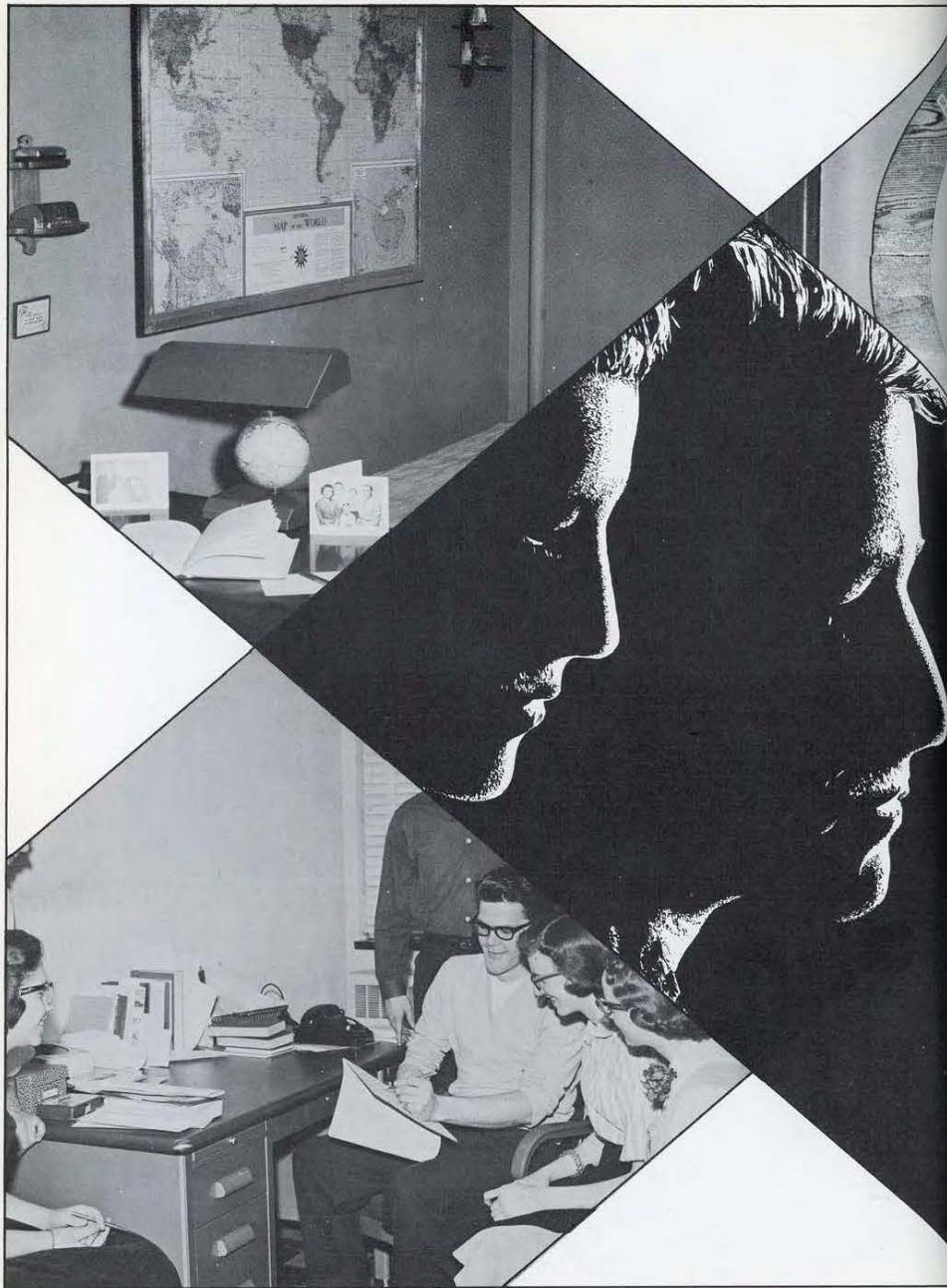
"One steno, three bosses. WOW!"—D. Sundeen, Ads Sales Manager; Florence Ohm, Secretary; G. Cumming, Ad Salesman; C. Hendrickson, Ad Salesman



Enthusiasm—same as zeal or ardor in the pursuit of anything; ardent and active interest. Merriam-Webster

—"THE BOOK IS OUT!"—





THE HEART of St. Paul

*Throbs with concern
for the millions
of souls
who have not been
told the love
of Christ Jesus.*

Spring Missionary Cabinet: S. Hanaford, R. Jenkins, E. Colby, J. Edington, P. Frederick, C. McVety

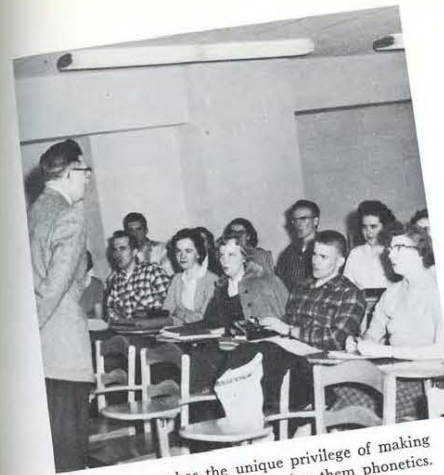


MR. G. LINWOOD BARNEY
Advisor and Chairman of the Missions Department

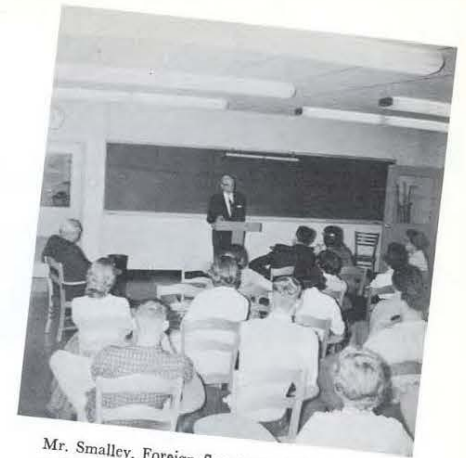
Fall Missionary Cabinet: T. Kyle, J. Leischer, R. Solvig, C. Meacham, R. Horst, I. Howe



The missionary society itself is comprised of the student body. At a meeting such as this students are challenged with the needs of men and women who are yet unreached for Christ.



Mr. Barney has the unique privilege of making faces at his class as he teaches them phonetics.



Mr. Smalley, Foreign Secretary of the Christian and Missionary Alliance, relates more of the details of foreign missionary service.



The broad category of missions takes on depth of meaning as it is presented in classes, discussion groups, and personal contact with students from other countries.

The challenge of missions becomes yet clearer as students form friendships with international students and begin to realize the difference in the customs and cultures of varied peoples of the earth.

By sharing and fellowshipping with other young people and schools with a love for Christ and a burden for the lost, students gain a broader insight into God's overall missions program.



PRAYER BANDS



AFRICA

Back Row: R. Solvig, B. Kuhne, O. Steinkamp, L. Blanchard, D. McVety, C. Jensen, G. Cumming, P. Siechert, R. Conley. Front Row: R. Skaggs, A. Koepp, E. Needham, C. Chryst, S. Pahl, A. Johnson, R. Jenkins, M. Lundell, C. Johnson, M. Johnson



CHINA

Back Row: M. York, G. Folstrom, J. Yang. Front Row: L. Lee, R. Horst, B. Chan



EUROPE

E. Bower, F. Seekins, A. Morgan, R. Pust, M. Draper



HOME MISSIONS

Back Row: B. Karklin, R. Schaefer, D. Swanson, L. Johnson, D. Paulson, M. Bakk, G. Klaudt. Front Row: J. Edington, P. Ralls, J. Skifstad, S. Farley, H. Hagen, E. Driemeyer



HOME MISSIONS

B. Wayland, G. Nagel, W. Matejka, W. Fuller, D. Smith, S. Hanke, W. Toavs, R. Edblom. Front Row: R. Severson, J. Schwoch, J. Hanke, L. Smith, H. Crees, M. Kinnick, F. Ohm



INDO-CHINA, THAILAND

Back Row: R. Deckert, B. McDonald, M. Carlson, J. Lewis, R. Bush, C. Fredstrom, L. Swanson, J. Beatty. Front Row: I. Howe, E. Moore, I. Honeywell, M. Lewis, K. Gregersen, A. Cantril

PRAYER BANDS



ISLAND WORLD

Back Row: F. Morre, J. Stutler, J. Walker, G. Barker, C. Hendrickson, K. Gowdy, S. Gowdy. Front Row: P. Jones, D. Brown, E. Ramer, P. Stuck, M. Flodman, P. Peterson



LATIN AMERICA

Back Row: L. Sackett, D. Lindgren, R. Bartz, R. Gray, P. Radford, H. Wilmore, D. Sundeen, P. Fredrick. Front Row: B. Gray, L. Marvin, J. Wood, S. Miller, D. Paullett, M. Gerstel, W. Smith, D. Wells, E. Dincau



LATIN AMERICA

Back Row: L. Way, B. Stanton, J. Treece, B. Vander Meiden, N. Pardun, M. Westlund, D. Knabenshue, P. Kulp, R. Alphs. Front Row: M. Ford, M. Livingston, M. Roberts, A. Nelson, C. Schaefer, A. Damoude, A. Nyberg, D. Olson

PRAYER BANDS



NEAR EAST - INDIA

Back Row: T. Kyle, S. Watne, B. Porter, N. Valentine. Front Row: G. Brown, E. Colby, M. Harlin, M. Kyle



NORTH AMERICAN INDIAN

Back Row: R. Trimble, T. Kersey, M. Jacobson, C. Neckels, E. Oscarson, P. Redford, H. Vik, J. Leischer, G. Levno. Front Row: L. Curtis, P. Batdorf, A. Hedrick, E. Gchl, C. Carlson, A. Blomquist, N. Noble, P. Haws



WORLD

Back Row: D. Leightner, J. Skor, D. Yeats, M. Drollinger, B. Ming, C. Schock, J. Frankenberry, R. Bunce, N. Earl. Front Row: J. Duncan, M. Hansen, M. Davis, L. Matheson, H. Rand, E. Hubin, L. Remington, J. McKean, P. Walker



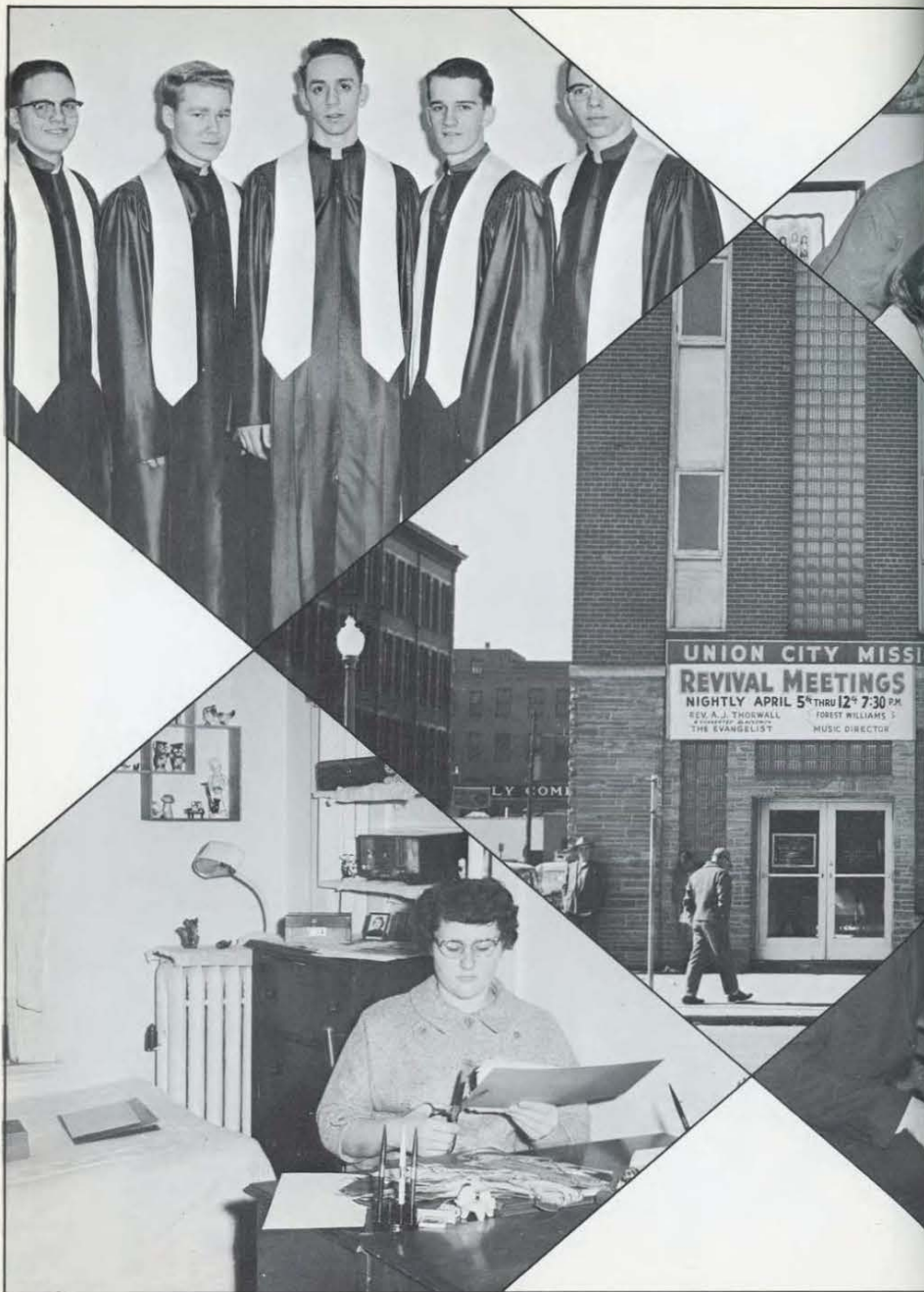
There is yet a more personal aspect of the missions program which a student realizes while still in school. His studies offer him technical knowledge; his devotional life builds up the spiritual man. He needs not wait until some future date either to give or pray; and while the foreign field is a thing of the future, he does the will of God in the mission field at hand in which he lives.



"For now the field is not far off
Where we must give the world a proof
Of deeds, not words." Butler.



Young people are today a product of their yesterdays. St. Paul is a stepping stone in their lives, grounding and preparing them for the future. When school has fulfilled its particular task, its students leave to take their place in God's plan.



THE DELIGHT

of St. Paul

*Is to do the will
of God
in spreading
the gospel of
Christ.*



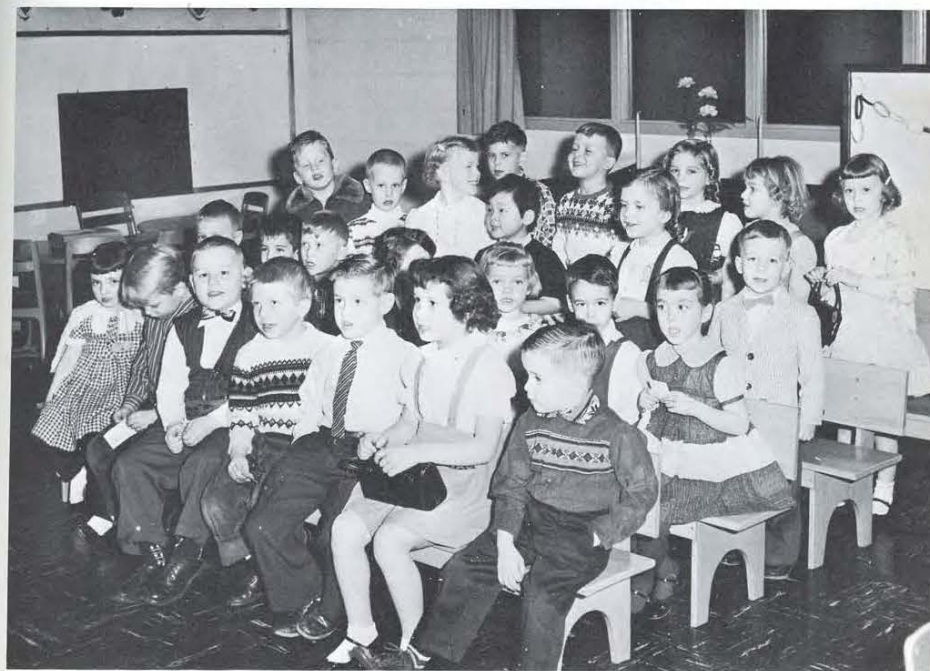
A ministry for Christ develops during a student's college life as he receives practical experience.

Young children of primary age are impressionable and eager listeners. They ask all kinds of impossible and irrelevant questions, sufficient to keep any teacher on her toes. But at the same time they respond to Bible truth with a simplicity of faith to shame any adult. Though a responsibility, it is a privilege to teach them.



"I studied my verse, Miss Horst, I can say it."

Reaching Young Children



The smaller the children, the more their faces shine as they sing the song they love, "Jesus loves me, this I know."



Preparation for Child Evangelism classes takes time and effort and love—and reaps in return affection and the sincere love of a child for Jesus Christ.

When these little colored children reach the Ober Club where they have Sunday school, they will shake the rafters with "Heavenly Sunshine" as only Ober kids can sing it.



The men of St. Paul and Minneapolis' many missions need Christ. Many are the opportunities of sharing the love of Christ in these missions.

Children are not the only ones to whom the gospel becomes precious. Older ones are often slower to respond, but the preciousness of leading one of these to the Lord can not be denied.



What a joy to see them find Someone in whom to place their confidence in face of a troubled future.

Teen-agers receive criticism and condemnation from many of their elders. But there are those high-schoolers who dearly love the Lord and are organized for fellowship and for the sake of winning others. These young people are a thrill to watch as they live out for Christ in non-Christian high schools and as they themselves develop into mature Christian adults.





Preparation for Christian service often leads to good fellowship and times of fun in the Lord.



Behind the scenes, the quartet relaxes around the piano, while Bob's fingers wander idly over the keys.

Nothing pleases teen-agers more than something tasty to end a meeting.



Kneeling: D. Loberg, I. Wittmeir, W. Toavs, L. Johnson, R. Trimble, G. Shambach, B. Karklin; First Row: E. Dincau, N. Radford, P. Peters, A. Nelson, M. Gerstel, P. Jones, R. Starkey, P. Petersen; Second Row: W. Smith, D. Brown, C. Schock, B. Aspeter, Carol Schaefer, S. Miller, W. Richards, D. Van Wormer, R. Kelck; Third Row: J. Walker, G. Thielbar, S. Pahl, P. Stuck, M. Draper.



Seated: E. Dincau, Secretary; Standing: J. Walker, Vice-President; R. Trimble, Treasurer; B. Karklin, President.

Fishers of Men

"A challenge to the challenger" — that's the impression received by those who go out on Fishers of Men. They go forth to give the Word of God to people not saturated with truth; their concern as fishermen is for "fish in seas uncharted." Working among immigrants and colored people, underprivileged and unchurched people whom God loves, they go forward each Sunday with the life-changing Truth of God working out through their lives. The fears they face, those of knocking on doors and of facing people, of giving spontaneous answers to those who demand them must be put aside and forgotten for the Gospel's sake. Herein lies the challenge which they meet — that of surrendering all things to Christ that he might minister through them.

"We go in Christ our Master's name to fish in seas of life for souls;
We seek for those who have not known the love of Him whose love we know.
Our nets are cast that we might find and draw to Him these souls in need;
We wish to share with them the Truth of Christ in Heaven Who loves them so.
This task we do for Christ our Lord with willing hearts and love for Him;
Yet we ourselves no credit merit, for all our strength to His alone —
Our eagerness to do His will, our joy in service He provides.
Oh, Christ, 'tis Thee Who still art seeking, through chosen channels of Thine own."



A short conversation and a well-chosen tract may make an impression on the life of a family which otherwise has little or no contact with the gospel. Such a means of witnessing is slow and often uneventful, yet eventually bearing fruit unto Jesus Christ.

Fishers In Action

Sometimes an opportunity arises to talk to a couple over an extended period of time. The desired result, of course, the salvation of souls; and sometimes Fishers have the unexcelled privilege of leading seeking souls to Christ.



Barb lines up the assignments.

Preparation



The tract committee, G. Thielbar, H. Crees, D. Loberg, and E. Bower, keeps the tract box well supplied with attractive, challenging tracts.



Every student watches the Christian service board.



All service for Christ begins and ends in prayer. We are but instruments in His hands. The Holy Spirit alone can draw precious souls into knowledge of Christ.

Off they go to spend another Sunday afternoon sharing the Word with little children who need the Lord.



Service for Our King



Jo Ann Sether, Public Relations Secretary, Secretary to the Dean

On our campus can be found numerous examples of people actively engaged in lives of service for Christ. Members of our college staff vividly portray how varied types of work can be done to the glory of His name.



Frances Staley, Secretary to the Treasurer, Bookkeeper



Darlene Chamberlain, Secretary to the President



Wilma Matejka, Admissions and Records Secretary



Marie Larson, Secretary to the Registrar



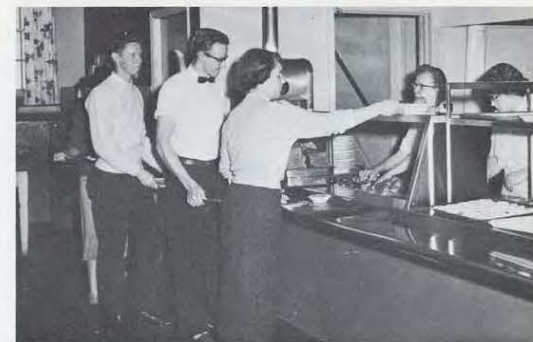
Barbara Kilpper, Director of Christian Service



June Smith, Secretary to the District Superintendent



Esther Stoesz, Laundry Manager



Gladys Quaderer, Head Cook; Viola Peterson, Cook



Audrey Cornforth, Assistant Manager, Edna Teeter, Book Store Manager

Marlene Flodman, College Nurse



Although the specified task might be office work or cooking, taking temperatures or selling ice cream, the service of any staff member is not all in doing; for the lives of these dedicated people, seen in normal, non-spectacular backdrops, are a source of inspiration to all those who see them at their work.

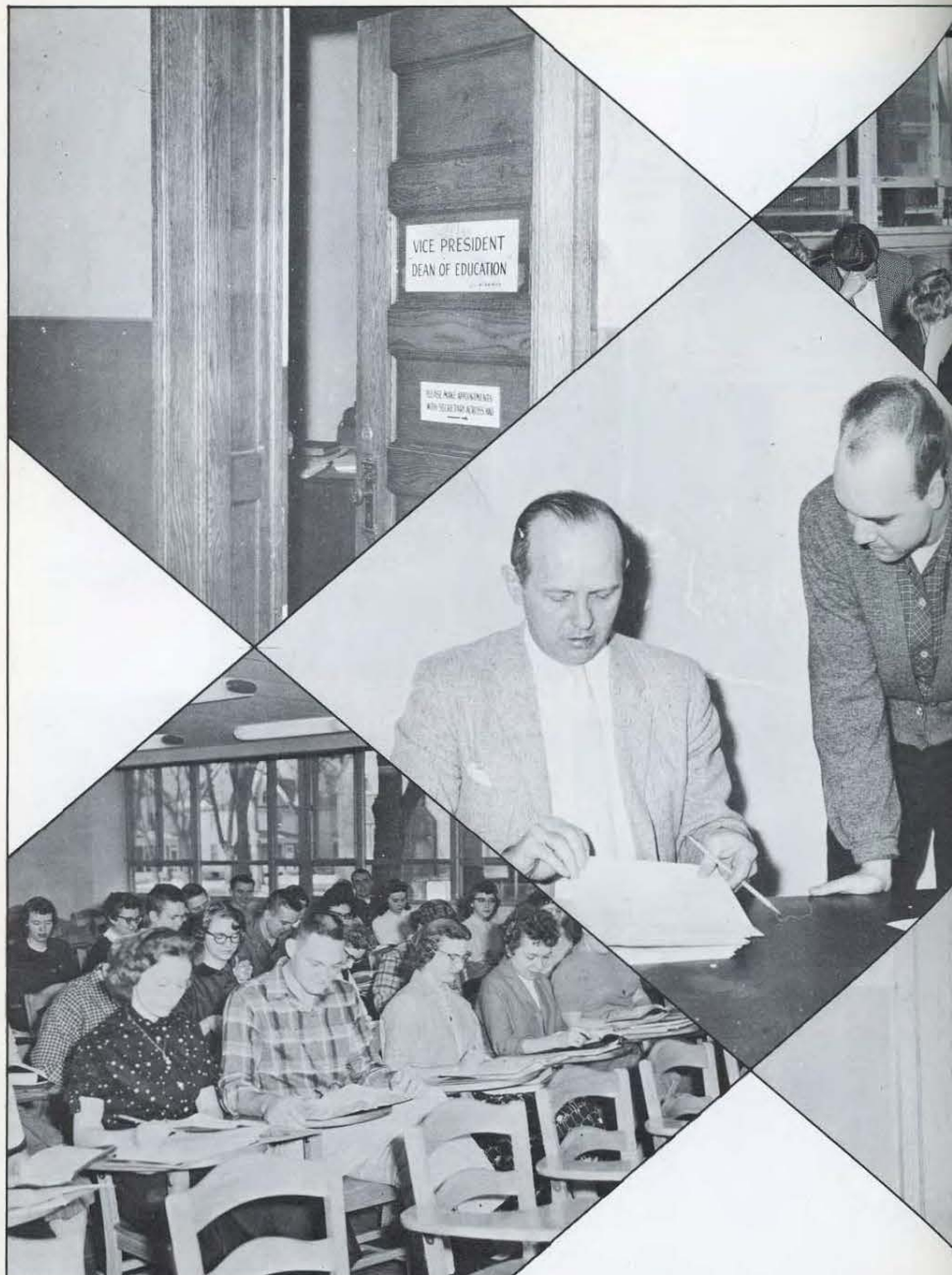
Robert Hahn, Superintendent of Buildings and Grounds



Nell Root, Snack-shop Manager

Eva Heikkinen
Hostess and Housekeeper





THE VISION

of St. Paul

*Is instilled in
open hearts
by men and women
of God.*

Administration



DR. G. D. STROHM
President of the St. Paul Bible
College

SCHOOL BOARD of the St. Paul Bible College. Left to right: Mr. Charles Eumurian, St. Paul; Dr. G. D. Strohm, St. Paul; Rev. R. F. Merrill, Chicago; Rev. Carl Volstead, St. Paul; Rev. Raymond McAfre, Chicago; Rev. L. W. Pippert, St. Paul; Rev. M. R. Thompson, Janesville, Wisconsin; Rev. Cecil R. Thomas, Chicago; Rev. James Cunningham, Lincoln; Rev. L. A. Kim, Minneapolis



MR. J. C. WENNINGER
Vice-President of the St. Paul
Bible College



MR. V. O. MILLER
Treasurer of the St. Paul Bible
College

Class of 1959:

Greetings!

These have been wonderful years that we have spent together at St. Paul. You have contributed in many ways to make it a better school. This has made you a part of St. Paul. You are "our joy and crown, our exceeding great reward", and now that you are about to begin your ministry for Christ, we, too, shall share with you in your fruit of tomorrow.

I want you to know that it has been a personal privilege and pleasure to have been so closely associated with you during these years.

May the Lord prosper and use you in the building of His kingdom.

Cordially in Christ,
George D. Strohm



Faculty



Wise servants of God—they carry on their work in the strength of Him alone in Whom is Strength.



G. LINWOOD BARNEY, B.A., M.A.
Chairman, Department of Missions, Professor of Missions



THEODORE BERGMAN, B.MUS.
Professor of Piano and Organ



JAMES W. BREWER, B.A.
Instructor of Music, Director of Choir



LUCILLE M. BROWN, B.S., M.MUS.
Chairman of Music Department, Associate Professor of Music



HAROLD T. BRUNDIN, B.MUS.
Professor of Voice



GEORGE E. CANNON, T.H.B.
Assistant Professor of Bible and Theology



JAMES C. DAVIES, B.A., M.MUS.
Professor of Music



FRANCES D. DECKER, B.R.E.
Dean of Women,
Instructor of Christian Education



RUTH FARDIG, B.MUS.
Instructor of Piano



A little nonsense now and then . . . is relished by the wisest men. Anonymous.



RICHARD A. FLEGLE, B.MUS.
Director of Orchestra,
Instructor of Brass



CAROLYN M. GREENE, B.A., M.A.
Assistant Professor of Speech and English



RUTH A. JONES, B.A.
Professor of Missions, History and English



WILLIAM LOCK, B.MUS.
A.R.C.T., Instructor of Voice and Piano



ROSE MARIE MERTENS
Instructor of Violin



LESLIE A. PERKINS, B.S.
Chairman of Bible and Theology Department, Professor of Bible and Theology



ADDIE B. RAINES, B.R.E., M.A.
Chairman of Christian Education Department, Professor of Christian Education, Librarian



STANTON W. RICHARDSON
B.S., M.A.
Professor of Bible and Theology



R. J. ROOT, B.MUS.
Instructor of Music

How thoughtfully God has supplied the needs of His servants. Not only has He provided for bodily needs, but fellowship around the table is relaxing and refreshing in the midst of a day's service for Him.



The annex is finished at long last, and Miss Jones looks as though the moving process is a real pleasure!



HELEN TANNER, B.A., M.R.E.
Assistant Professor of Christian Education



MERTON W. TANNER
B.A., B.D., M.A., Th.M.
Registrar, Professor of Bible and History



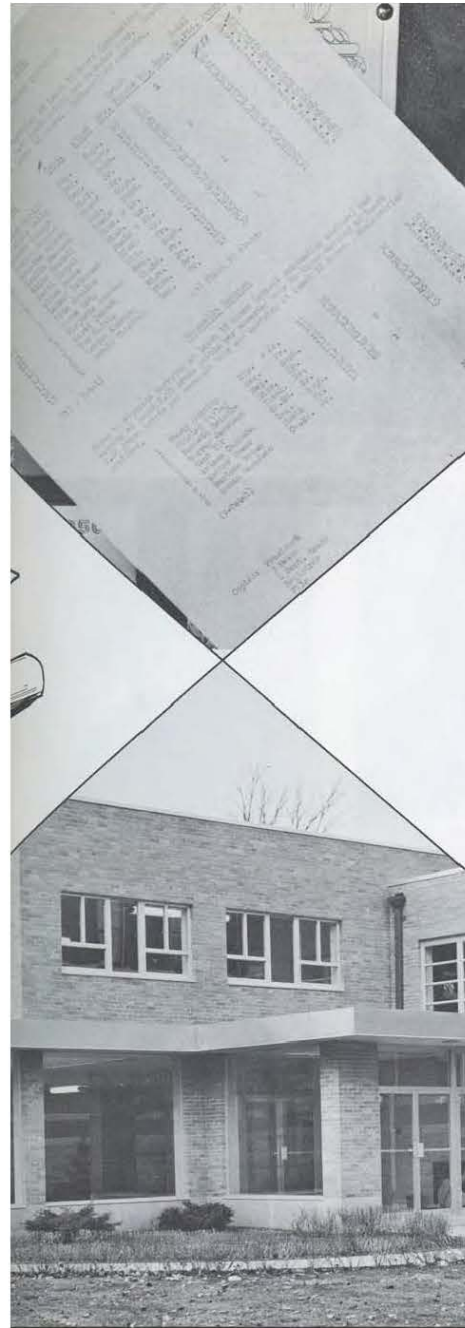
JOSEPH M. TEWINKEL, JR., B.A.
Dean of Men, Athletic Director, Instructor of English



R. R. WALTERS, M.A.
Instructor of Zoology



JOSEPH C. WENNINGER, JR., B.A.
Vice-President, Dean of Education, Professor of Bible and Journalism



THE HOPE

of St. Paul

*Is embodied in
the dedicated lives
of young people
studying within
its walls.*

Graduates



Back row: M. Kyle, V. Pres.; D. Schaefer, Treas. Front row: Mr. Cannon, Advisor; N. Valentine, Pres.; E. Driemeyer, Sec.



ALICE BEEBE
BACHELOR OF SCIENCE DEGREE
Remer, Minnesota



BENJAMIN CHAN
BACHELOR OF ARTS DEGREE
Hong Kong



CAROL CHRYST
BACHELOR OF SCIENCE DEGREE
St. Paul, Minnesota



ELAINE COLBY
GENERAL DIPLOMA
Hibbing, Minnesota



GORDON CUMMING
BACHELOR OF SCIENCE DEGREE
Turtle Creek, Pennsylvania



NANCY CUMMING
GENERAL DIPLOMA
Pittsburgh, Pennsylvania

Class of '59



ELLA MAE DRIEMEYER
GENERAL DIPLOMA
Tyler, Minnesota



JOSEPH EDINGTON
BACHELOR OF ARTS DEGREE
West Terre Haute, Indiana



GEORGE FOLSTROM
BACHELOR OF ARTS DEGREE
Bejou, Minnesota



KAREN GREGERSEN
BACHELOR OF SCIENCE DEGREE
Menominee, Michigan



JEROME GROSSEHME
BACHELOR OF SCIENCE DEGREE
Omaha, Nebraska



RUTH HORST
BACHELOR OF RELIGIOUS EDUCATION
DEGREE
Denver, Colorado



MURRAY JACOBSON
BACHELOR OF SCIENCE DEGREE
Penock, Minnesota



MARILYN JONES
BACHELOR OF RELIGIOUS EDUCATION
DEGREE
Pine River, Minnesota



ALICE KOEPP
BACHELOR OF SCIENCE DEGREE
Junius, South Dakota

Graduates



MARY KYLE
GENERAL DIPLOMA
Echo, Minnesota



LYDIA LEE
CHURCH MUSIC DEGREE
Bangkok, Thailand



JOHN LEISCHER
BACHELOR OF ARTS DEGREE
Oconomowoc, Wisconsin



GLENN LEVNO
BACHELOR OF ARTS DEGREE
Sidney, Montana



JAMES LEWIS
BACHELOR OF SCIENCE DEGREE
Ottumwa, Iowa



MARYLAN LEWIS
GENERAL DIPLOMA
Billings, Montana



CAROL MEACHAM
CHURCH MUSIC DEGREE
Cincinnati, Ohio



ROBERT OLSON
GENERAL DIPLOMA
Janesville, Wisconsin



ROBERT PORTER
GENERAL DIPLOMA
Pontiac, Michigan

Class of '59



PAUL RAUSCH
CHURCH MUSIC DEGREE
Fish's Edy, New York



PAUL REDFORD
BACHELOR OF ARTS DEGREE
Wyandotte, Michigan



CLYDE ROBINSON
BACHELOR OF ARTS DEGREE
New Brighton, Minnesota



FRANK ST. JOHN
GENERAL DIPLOMA
Garfield Heights, Ohio



RICHARD SCHAEFER
BACHELOR OF RELIGIOUS EDUCATION
DEGREE
Watertown, Wisconsin



ALFRED SNYDER
BACHELOR OF SCIENCE DEGREE
Powell, Wyoming



ROY SOLVIG
BACHELOR OF SCIENCE DEGREE
Melrose Park, Illinois



N. NED VALENTINE
GENERAL DIPLOMA
Bowling Green, Ohio



HANS VIK
BACHELOR OF ARTS DEGREE
Sidney, Montana

Graduates



MILTON R. WESTLUND
GENERAL DIPLOMA
Billings, Montana



HELEN YIP
BACHELOR OF RELIGIOUS EDUCATION
DEGREE
Kowloon, Hong Kong



"They worked so for that retreat!"



"Now just what would make a good program!"



"There is always the preparation!"

Juniors



Back row: S. Hanaford, V. Pres.; R. Karklin, Treas.
Front row: Mr. Barney, Advisor; G. Nagel, Pres.; R. Jenkins, Sec.



R. HARLAN ARMSTRONG
Minneapolis, Minnesota



MERRILL BAKK
Cook, Minnesota



MELVIN A. CARLSON
Fremont, Nebraska



ARLENE DAMOUE
Dannebrog, Nebraska



ELAINE DINGAU
Duluth, Minnesota



MARJORIE FORD
Hammond, Wisconsin



PAUL FREDERICK
New Brighton, Pennsylvania



WALTER FULLER
Sebeka, Minnesota



KENNETH GRINDLE
Marion, Indiana



ROBERT HALLQUIST
Minneapolis, Minnesota

Juniors



SUSAN HANAFORD
Monticello, Minnesota



INA HOWE
Perismouth, Iowa



RITA JENKINS
Staples, Minnesota



GORDON JENSEN
Oseola, Wisconsin



AUDRE JOHNSON
Pine River, Minnesota



LESTER JOHNSON
Norfolk, Nebraska



RUTH KELCK
Mason City, Iowa



MERLE KINNICK
White Sulphur Springs, Mont.



GERALD KLAUDT
Arlee, Montana



DALE KNABENSCHUE
Green Bay, Wisconsin



THOMAS KYLE
Akron, Ohio



DOUGLAS MCVETY
Regina, Saskatchewan, Canada Alberta, Minnesota



WAYNE MATEJKA
Johnsonburg, Pennsylvania



DALLAS MINNICK
Lumberton, North Carolina



KENNETH MOON
Lumberton, North Carolina



FRED MOORE
Rockford, Illinois



GEORGE NAGEL
Ellwood City, Pennsylvania



ANNETTE NYBERG
Hinckley, Minnesota



FLORENCE OHM
Potter, Wisconsin



DARLYS OLSON
Tracy, Minnesota

Class of '60



DEANNA PAULAT
Minneapolis, Minnesota



BETSY PETERSON
Des Plaines, Illinois



CLIFFORD PETERSON
Chicago, Illinois



PHYLLIS RALLS
Minneapolis, Minnesota



DAVID SMITH
Charles City, Iowa



ORREL STEINKAMP
Renville, Minnesota



VIRGINIA STEINKAMP
St. Paul, Minnesota



JACKSON STUTLER
Holly, West Virginia



JIMMIE D. WALKER
Oklahoma City, Oklahoma



K. LEON WAY
West Branch, Michigan



WILLIAM WAYLAND
Spokane, Washington



THOMAS WENDLEGAST
Louisville, Kentucky



HARLEY WHEELER
Henning, Minnesota

Not Pictured: Lewis Blanchard,
Robert Karklin, Donna Kersey,
Tay Kersey, Bernard Kuhne, Wil-
liam Warren, Dorothy Wawerzin



"How we concentrate!"



Campus mascot!

Sophomores



Back row: C. Hendrickson, V. Pres.; R. Deckert, Treas. Front row: Mrs. Brown, Advisor; D. Sundeen, Pres.; E. Moore, Sec.



SHIRLEY APPEL
Norfolk, Nebraska



GORDON L. BARKER
Osage, Iowa



RICHARD BARTZ
St. Paul, Minnesota



HAROLD BEATTY
Pittsburgh, Pennsylvania



ARLENE BLOMQUIST
Rockford, Illinois



ESTHER BOWER
Osage, Iowa



RICHARD BUSH
Pensacola, Florida



ALICE CANTRIL
Ottumwa, Iowa



HELEN CREES
Chicago, Illinois



MABEL DAVIS
Niagara Falls, New York

Class of '61



ROANE DECKERT
Richy, Montana



MARLENE FLODMAN
Turlock, California



JANET FRANKENBERRY
Morgantown, West Virginia



CLAIRE FREDSTROM
Lincoln, Nebraska



ARDATH GATTEN
Danbury, Wisconsin



ELLEN GEHL
Appleton, Wisconsin



GAIL GEIST
Tampa, Florida



MILO GRAY
Deerwood, Minnesota



MARILYN HARLIN
Hollidaysburg, Pennsylvania



PEGGY HAWS
Clintonville, Wisconsin



ATHREA HEDRICK
Columbus, Ohio



CRAIG HENDRICKSON
Battle Lake, Minnesota



INEZ HONEYWELL
Neligh, Nebraska



CAROL JOHNSON
Milaca, Minnesota



MARJORIE JOHNSON
St. Paul, Minnesota



DAVID KERSEY
Minneapolis, Minnesota



RAE JOYCE KUHNE
St. Paul, Minnesota



MARY LIVINGSTON
Minneapolis, Minnesota



ELAINE MOORE
Omaha, Nebraska



P. ALLEN MORGAN
Milesville, South Dakota

Sophomores



NANCY NOBLE
Dixon, Illinois



JAMES N. OLSON
Blairsburg, Iowa



D. EDWARD OSCARSON
Malta, Montana



CLIFTON PATTERSON
Sioux City, Iowa



SYLVIA PRAHL
Watertown, Wisconsin



PAUL RADFORD
Brainerd, Minnesota



PATRICIA RALLS
Minneapolis, Minnesota



EVA RAMER
Dallas, Texas



LaDONNA REMINGTON
Janesville, Wisconsin



MARGARET ROBERTS
Poplar, Montana



LOUISE SACKETT
Kinsman, Ohio



JEANETTE SCHWACH
Barnum, Minnesota



FLOYD SEEKINS
Amery, Wisconsin



RUTH SEVERSON
Tyler, Minnesota



GORDON SHAMBACH
Brinsmade, North Dakota



ROBBIE SKAGGS
Oak, Arkansas



LUCILLE SMITH
Englewood, Colorado



MAC SODERQUIST
Sandstone, Minnesota



PATRICIA STUCK
Dayton, Ohio



DAVID SUNDEEN
Lincoln, Nebraska

Class of '61



LESLIE SWANSON
Richey, Montana



C. ROSS TRIMBLE
Wolf Point, Montana



DONNA VAN WORMER
Flint, Michigan



NANCY WALKER
Oklahoma City, Oklahoma



SAMUEL WATNE
Galt, Iowa



DONNA WELLS
Minneapolis, Minnesota

Not Pictured: Ron
Gray, Neil Pardun,
Gerald Thielbar

SPBC Zoo



In Memory of Miss Rosalie Liudahl

classmate and friend, who drowned near Whitefish, Montana, June 2, 1958. Because of her sincerity and quiet contribution to our lives, we as the sophomore class dedicate this page in her honor.



Freshmen



Back row: H. Rand, Treas.; N. Earl, V. Pres. Front row: L. Matheson, Sec.; J. Meltzer, Pres.



BONNIE ASPSETER
Exeland, Wisconsin



PHYLLIS BATDORF
Verndale, Minnesota



DARLENE BROWN
Wolf Point, Montana



GLORIA BROWN
Minneapolis, Minnesota



RITA CONLEY
Wrenshall, Minnesota



LAURIE CURTIS
Minneapolis, Minnesota



MARJORIE DRAPER
Englewood, Colorado



MARYLEE DROLLINGER
Cleveland, Ohio



JULIE DUNCAN
Green Bay, Wisconsin



NORMAN EARL
Chicago, Illinois

Freshmen



MARLYCE EASTMAN
Hubbard, Minnesota



SHIRLEY FARLEY
Trego, Montana



DONALD FRANZ
Robbinsdale, Minnesota



MARLENE GERSTEL
Canonsburg, Pennsylvania



NORMA GRAY
St. Paul, Minnesota



CONSTANCE GREEN
Englewood, Colorado



GEORGIA GREINER
Lyle, Minnesota



MAVIS GUIDA
Tyler, Minnesota



HELEN HAGEN
Holcombe, Wisconsin



JUDY HANKE
Minneapolis, Minnesota



SYLVESTER HANKE
Minneapolis, Minnesota



MARGUERITE HANSEN
Minneapolis, Minnesota



KENNETH HARPHAM
Garvin, Minnesota



JOHN JENNINGS
St. Paul, Minnesota



PATRICIA JONES
Turtle Creek, Pennsylvania



DOUGLAS LEIGHTNER
Santa Fe, New Mexico



DAVID LOBERG
Milwaukee, Wisconsin



MARILYN LUNDELL
Kennedy, Minnesota



BURLEY McDONALD
Longview, Washington



JOAN MCKEAN
Minneapolis, Minnesota

Class of '62



LEOLA MARVIN
Onamia, Minnesota



LAUREL MATHESON
Forest Lake, Minnesota



JOHN MELTZER
Piedmont, California



SHIRLEY MILLER
Saybrook, Illinois



BEVERLY MING
Bloomfield, Montana



ESTHER NEEDHAM
Big Lake, Minnesota



ANN NELSON
Cleveland, Ohio



KATHERINE PABST
Lincoln, Nebraska



MARTIN PAULAT
St. Paul, Minnesota



ANNE PENDELL
Columbus, Ohio



PRISCILLA PETERS
Glasgow, Montana



RAYMOND PUST
Sidney, Montana



HAZEL RAND
Minneapolis, Minnesota



WILMA RICHARDS
Des Moines, Iowa



ADELE ROBERTS
Lambert, Montana



CAROLE SCHAEFER
McAllen, Texas



CAROL SCHOCK
Wolf Point, Montana



JOAN SKIFSTAD
Big Falls, Minnesota



JON SKOR
Wildrose, North Dakota



RICHARD SLATER
Fort Wayne, Indiana

Freshmen



WANDA SMITH
Pittsburgh, Pennsylvania



BLYTHE STANTON
Kalispell, Montana



ROBERTA STARKEY
Des Moines, Iowa



GARY STENLUND
Baudette, Minnesota



TRIXIE STIGERS
Beaverdale, Pennsylvania



WARREN TOAYS
Wolf Point, Montana



JAMES TREECE
Minneapolis, Minnesota



DONALD WEST
Mechanicsville, Iowa



HILMORE WILLIAMS
Osage, Iowa



IRVIN WITTMIEER
Pollock, South Dakota



JEAN WOOD
Onamia, Minnesota



JAMES YANG
Kowloon, Hong Kong



DAVID YEATS
Green Bay, Wisconsin



MARVIN YORK
Loranger, Louisiana

Not Pictured: Donita
Bailey, Roger Bailey,
Paul Penton



"Those helpful 'keep awake' items"



Joybells ringing in my heart

Unclassified Students



BARBARA SCHAEFER
Watertown, Wisconsin



PAUL GUNTHER
Salem, Oregon



RODNEY EDBLOM
Cook, Minnesota

Not Pictured: Oralee
Cain, Frances Decker,
Kenneth Gowdy, Beverly
Gray, Barbara Kilper,
Gladys Krause,
Charles Nelson, Arlene
Oppertshauer

Second Semester Students



Left to right: Elaine Hafele, Rona Bunce, Alice Black, Joyce Rude, Roger
Alphs, Donald Paulson, Cecil Neckels, Paul Kulp, Maurice Davidson, Shirley
Elwood, Shirley Gowdy, Paul Seichert.

Not pictured: Carol Carlson, Elva Hubin, Donald Lindgren, Patricia Petersen,
David Swanson

*Best Wishes and Sincere Appreciation
for the Assistance Furnished Us
during the past year*



MONTGOMERY WARD

1400 UNIVERSITY AVENUE
ST. PAUL, MINN.

Congratulations Class of '59

*Sound the alarm through the earth and the heavens!
Summon the slumbering world to attend!
Jesus is coming! the hour is impending!
Sound the alarm to earth's uttermost end!*

*Sound the alarm to the millions that wander
Out in the darkness of heathendom's night!
Tell them the King of all kingdoms is coming;
Tell them of Jesus, and take them the light.*

—A.B.S.

NYACK MISSIONARY COLLEGE

AMERICA'S OLDEST BIBLE COLLEGE



EXTENDS FRATERNAL GREETINGS
TO HER COLLEAGUES AT
ST. PAUL BIBLE COLLEGE

The Christian and Missionary Alliance International Headquarters

260 West 44th Street
New York 36, N. Y.

Nyack, New York

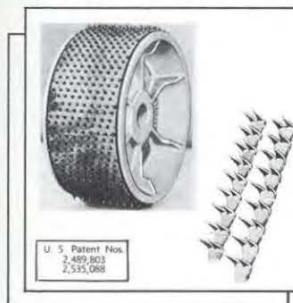
Congratulations Class of '59



Church of THE CHRISTIAN AND MISSIONARY ALLIANCE

Billings
Montana

CONGRATULATIONS



"The fear of man bringeth a snare: but whoso putteth
his trust in the Lord shall be safe."

—Prov. 29:25.

NEILSON PRODUCTS CO.

Lake Elmo

Minnesota

THE SUCCESS

of St. Paul

*Is made possible
by the generous
spirit of friends
and the faithful
prayers
of saints.*

To THESE who have cooperated heartily and assisted wisely we extend our sincere thanks:

Joseph Wenninger
Schlief and Company, Printers
Leonard Hiti and Milo Gray, Photographers
O. L. Mjos, A. J. Dahl Company, Binder

And the faculty, staff, and student body without whose help this book could not have been produced.

THE SHIELD STAFF
1959

CONGRATULATIONS TO OUR SONS AND DAUGHTERS OF 1959

We are grateful for the contribution you have made to the St. Paul Bible College. Always remember St. Paul belongs to you and you belong to St. Paul.

"There are Prepared Places for Prepared People"

St. Paul Bible College
St. Paul, Minnesota

Midwestern Regional School of The Christian and Missionary Alliance
Dr. G. D. Strohm, President

COAL - COKE - BRIQUETS
FUEL OIL
FOR YOUR HOME OR BUSINESS

"BLUE POINT" POCAHONTAS — ALL SIZES "STOTT BRIQUETS"
"PETROLEUM BRIQUETS" "PETROLEUM CARBON COKE" "KOPPERS COKE"
"COMMANDER" — KENTUCKY'S FINEST STOKER COAL
"PURITAN" — W. KENTUCKY 1" x 1/4" STOKER COAL
"AMAZON" — W. KENTUCKY 1 1/4" x 1/4" STOKER COAL
"FIRE KING" — SOUTHERN ILLINOIS STOKER COAL FUEL OIL

FOR LARGE OR SMALL ORDERS
Midway 6-6511

GREAT LAKES COAL & DOCK CO.
2102 University Ave. St. Paul, Minn.

HITI STUDIO
In The Midway

Portraiture and Commercial
Any Thing — Any Where — Any Time
University At Snelling
1547 University Ave. St. Paul 4
Midway 4-3690
L. LEONARD HITI
Master of Photography

CONGRATULATIONS TO THE
SENIOR CLASS

Continental Tool & Die Co.

Engineering - Designing - Manufacturing
Tools - Dies - Molds

MARTIN PAULAT - Res. MI. 4-1896
410 Front St. St. Paul 3, Minn.

CONGRATULATIONS . . .
CLASS OF '59

BRISSMAN-KENNEDY, INC.

Quality Maintenance
Supplies and Equipment

Authorized MULTI-CLEAN Distributor

Phone: Capital 2-6386
136 E. 10th St. St. Paul 1, Minn.

Compliments of

**SAINT PAUL FEDERAL SAVINGS
AND LOAN ASSOCIATION**



AXEL A. OLSON, President
Says:

*"Live happier by making thrift a
part of your life."*

THIS ASSOCIATION IS CHARTERED AND
SUPERVISED BY THE U. S. GOVERNMENT

*Best Wishes and Sincere Appreciation
for the Assistance Furnished Us
during the past year*



MONTGOMERY WARD
1400 UNIVERSITY AVENUE
ST. PAUL, MINN.

CONGRATULATIONS . . .

*The Hope of the righteous shall be gladness—but
the expectation of the wicked shall perish.*

Prov. 10:28



"RAPID FILL"
Tire Buffing Rasp

NEILSEN PRODUCTS CO.

Lake Elmo

::

Minnesota

ALLEN BROS. FAIRWAY

Meats and Groceries

CASE LOTS OUR SPECIALTY

Phone MI. 5-4444
928 Raymond Ave. St. Paul, Minn.

GENUINE REGISTERED
Keepsake
DIAMOND RINGS



BECKLUND JEWELERS

1511 East Lake St.
Minneapolis
Open Friday Evenings Till Nine
No Charges For Credit

MIDWAY NATIONAL BANK

"Your Financial Partner"

Over 40 Convenient Banking Services!

- Convenient Midway Location!
- Free Parking
- "Bank by Mail" Service
- 24 hour depository

University & Snelling Avenues
Midway 6-2661

Member of the Federal Deposit Insurance Corporation

DAYTON'S TRANSFER

Local and Long Distance
Agency U. S. Van Lines

Phone: JACkson 1-3586
4211 Girard Ave. N. Minneapolis, Minn.

For Charter Buses
Call

FRANK M. BABB
(JU. 8-6966)

6901 W. River Road N.
Mpls. 15, Minn.

BROWN'S ICE CREAM COMPANY

BROWN'S VELVET ICE CREAM

ICE CREAM FOR ALL OCCASIONS

1855 East Lake St. Minneapolis 7, Minn.

MARQUART'S BEACON HEIGHTS RESORT ON BEAUTIFUL BIG WHITEFISH LAKE

A Christian resort in the pines of northern Minnesota.
Completely modern housekeeping cabins.
Honeymooning? - Vacationing?
You'll find Beacon Heights the ideal spot!

I John 1:7

Telephone:
Ideal Corners,
Kimball 3-4166

Mr. and Mrs. Ed. Marquart
Pequot Lakes, Minnesota



SMITH TEXACO STATION

Van Buren and Snelling
Midway 6-4946

Midway Typewriter Exchange

SALES - SERVICE - SUPPLIES - RENTALS
Typewriters and Business Machines
All Makes and Models
736 N. Snelling
Carl W. Wagener MI. 5-7451

BEST WISHES

FOODTOWN SUPER MARKETS

1546 Como off Snelling
White Bear Ave. and County Road E
1201 Payne Ave.
2807 No. Hamline Ave.

For the UNUSUAL in Flowers

BARR'S FLOWER SHOP

Midway 6-7941
Snelling at University . . . St. Paul 4, Minn.
Res. Midway 4-9970

Phone: MI. 6-7161

IVER H. CARLSON & SON, INC.

Roofing, Siding, Insulation, Aluminum Windows

749 North Snelling Avenue
St. Paul 4, Minn.

CHRISTENSON'S SHOE STORE

S.P.B.C. STUDENTS
10% DISCOUNT
492 North Snelling
St. Paul, Minn. Midway 4-5230

LINDE TV ELECTRONICS CO.

T-V — Radio — Car radio
Reliable Sales & Service

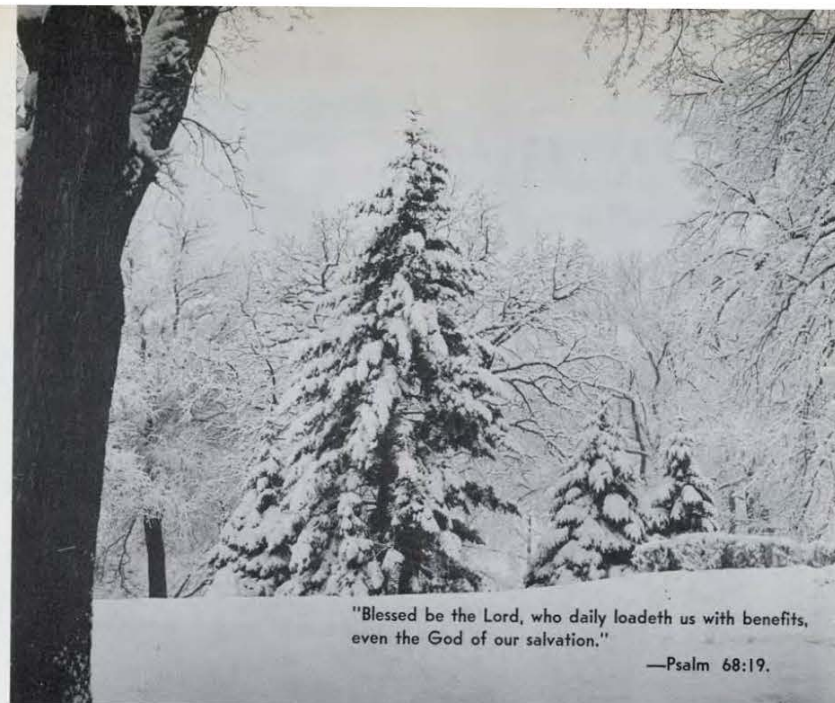
681 No. Snelling Ave.
St. Paul 4, Minn.

ROBERT PAUL T-V CO.

TELEVISION — RADIO — HI-FI
Sales and Service
Open Daily — 9:00 A.M. to 9:00 P.M.
572 N. Snelling Ave. Midway 6-5435

SOL WINNICK CO.

Wholesale Distributors
— Men's Clothing —
Discounts to 40%
510 Robert St. St. Paul, Minn.



"Blessed be the Lord, who daily loadeth us with benefits,
even the God of our salvation."

—Psalm 68:19.

Congratulations to the Senior Class . . .

GETCHELL STEEL TREATING CO., INC.

COMMERCIAL STEEL TREATING

3012 East Hennepin Avenue

Minneapolis 14, Minnesota

DELIVERY FROM WAREHOUSE STOCK

HAMLIN HARDWARE

TEL. MI. 4-3037

Snelling and Englewood

BROTHERHOOD MUTUAL LIFE INSURANCE COMPANY

Fort Wayne, Indiana

A PLAN FOR EVERY LIFE

Life
Hospitalization
Family Security
Juvenile Savings

District Agent: Clarence E. Walstad
7100 - 17 Av. So., Mpls. Union 6-5177

FRED W. JOHNSTON FUNERAL HOME

334 N. Snelling Ave. St. Paul 4, Minnesota
Midway 6-4037

MIDWAY MOTEL

ST. PAUL'S NEWEST AND FINEST

901 North Snelling Avenue St. Paul 4, Minn.

EACH UNIT HAS . . .

- Large Carpeted Rooms.
- Steam Heat — Thermostat Control.
- Beautifully Furnished, Including Good Beds.
- Private Tile Bath with Tub and Shower.
- Telephone and Free Television 21".

Located in the Heart of the College and Midway District
(Across from Hamline University)

NEAR GOOD EATING PLACES

— WRITE FOR RESERVATIONS —

ROSALIE BEAUTY SALON

ROSALIE A. AMACHER, Manager

1564 Englewood Ave. Midway 6-3681

"Large enough to serve you . . . Small enough to know you"

HAMLIN CLEANERS

3 Hrs. Service 6 days a week

In by 10 A.M., out at 1 P.M.

724 Snelling Ave. No. St. Paul 4, Minn.
Midway 4-5885

Compliments of

ROTO-ROOTER Sewer Service Company

CApital 4-2814 Saint Paul

Midway 6-9019

WASHING - GREASING - TIRE REPAIR
TIRES - BATTERIES - ACCESSORIES

LEN'S SHELL SERVICE

Hamline and Thomas St. Paul, Minn.

REAL ESTATE APPRAISALS

LEAF & THERA, INC.

COMPLETE INSURANCE SERVICE

515 N. Snelling Ave. St. Paul 4, Minn.
Midway 6-8646

Swanson's Paint & Wallpaper

— ARTIST SUPPLIES —

Stores Conveniently Located in Greater St. Paul

"Friendly Service for Over 60 Years"

Main Store - 512 No. Snelling Ave. - MI. 6-7178

DUTCH BOY PAINTS AND VARNISHES

WHITAKER BUICK CO.

1225 University Avenue
St. Paul, Minnesota

HOME OF GUARANTEED USED CARS



COMPLETE INSURANCE PROTECTION

LIFE - FIRE - AUTO

Midway 5-6611

1919 University Ave. Saint Paul

NEW - AUTOMOBILES - USED

DAN PETERSON MOTORS

1630 University Avenue
MI. 5-3441

::

I WILL NOT BE UNDERSOLD

LLOYD'S PHARMACY

Accurate
PRESCRIPTION SERVICE

SCHOOL SUPPLIES

720 N. Snelling

KEMP PHARMACY

Hamline and Thomas
Midway 4-2877

Phone Capital 2-3875

MYRON JEWELRY COMPANY

MEET ASCH — SAVE CASH

Special Discounts to All Students
Liberal Terms - No Carrying Charges

422-24 Wabasha St. St. Paul 2, Minn.

HAWKINSON'S JEWELRY

Hamilton - Elgin - Bulova Watches

Expert Watch Repairing

491 N. Snelling at University MI. 5-1077

COLUMBIA TRANSIT CORP. CAPITOL TRANSIT, INC.

1102 North Snelling St. Paul 13, Minnesota
Phone: Midway 5-3959

WHERE TRAVEL AND SAFETY ARE SYNONYMOUS

10:00 A.M. to 1:30 P.M. — HOURS — 4:00 to 6:00 P.M.

HENRY W. ANDERSON

OPTOMETRIST

1573 University Avenue
St. Paul 4, Minn. Midway 4-9910

DOUG WILSON LOAN CO.

563 University Ave., St. Paul

"MONEY IN MINUTES"

DOM'S SHOE SHOP

Minnehaha and Hamline

Res. PRospect 4-4268

Midway 6-0850

MIDWEST MOTOR CO.

GEO. G. OLSON

NEW AND USED CARS

975 University Ave.

St. Paul 4, Minn.

L. P. CARLSON

Apartments for Rent

Psalm 73:1

LLOYD LUNDEEN SALES CO.

MANUFACTURERS IMPORTERS
WHOLESALEERS

FINE DIAMONDS WATCHES

730 Hennepin Ave.
Minneapolis : Minnesota

"TIP TOP" Cleaners and Launderers

1346 W. Minnehaha Ave., near Hamline

Phone MI. 5-6892 - Hours 8 A.M. to 6 P.M.

TRY US FAIR PRICES

Johnson & Tank Motor

675 N. Snelling MI. 4-8438

Rich's Auto Radiator Service

Cleaning and Repairing
675 N. Snelling Phil Collins MI. 5-1271

GENERAL INSURANCE

DAVE BRETZ

568 Snelling Ave., St. Paul
IV. 4-1182

LEMM PHARMACY

William M. Lemm

- PRESCRIPTIONS CAREFULLY COMPOUNDED
- BRIDGEMAN'S ICE CREAM
- HALLMARK GREETING CARDS

Snelling at Sherburne

Saint Paul

schlief
and
company *Printers and Lithographers*
300 NORTH ROBERT STREET SAINT PAUL 1, MINNESOTA
PHONE CAPITAL 4-4191

PRINTERS OF THE

Shield



Institute Book Store

1361 ENGLEWOOD AVE.

BIBLES • DEVOTIONAL BOOKS • FICTION
DICTIONARIES AND COMMENTARIES

VISUAL EDUCATIONAL SUPPLIES • CHURCH SUPPLIES
GIFT ITEMS • GREETING CARDS FOR ALL OCCASIONS

COMPLETE LINE OF D.V.B.S. MATERIAL

WE INVITE YOUR MAIL ORDERS

EDNA TEETER, Manager

EARL'S DRIVE-IN

"THE SPOT WITH THE CHICKEN BROASTER"

1129 University Ave.

Open 24 Hours Daily

EARL'S QUICK LUNCH

1445 University Ave.

Open 6:00 A.M. - 7:00 P.M.

EARL'S LUNCHEONETTE

1598 University Ave.

(University at Snelling Aves.)

Open 24 Hours Daily

EARL'S PIZZA KITCHENS

Pleasant Dining Rooms
Pizza - Spaghetti - Spumoni
Take-out Orders

467 No. Snelling Ave.

Phone Mi. 5-2522

Hours 11:00 A.M. - 2:30 A.M.

991 Arcade

Phone Pr. 4-6041

Closed Sundays at all locations
to encourage and allow our employees
to attend church—The Lord's Day.

BALDINGER BAKERY

(Since 1888)

To satisfy our customer's demand for hot bread, rolls
and pastries we have put a modern retail store in our
plant . . .

1759 Selby at Wheeler

Midway 6-2591

Preferred Risk Mutual Ins. Co.

PREFERRED RISK MUTUAL INSURANCE

Low Cost Automobile Insurance . . . for
Total Abstainers . . . Only



If You Don't Drink

WHY HELP PAY FOR
THE ACCIDENTS OF
THOSE WHO DO?
For information call
Agent

For information call . . .

YOUR LOCAL AGENT

ALFRED C. STAHNKE

Phone

PRospect 1-5442

1410 Payne Ave.

St. Paul 1, Minn.

HAMLIN DRUG STORE

719 North Hamline

"Your Friendly Corner Drug Store"

GEO C. PAUL, Reg. Ph., Prop.

WE SPECIALIZE IN PRESCRIPTIONS

Drugs, Candy & Fountain Service

Phone MI. 6-9076

Best Wishes to the Students of the
St. Paul Bible Institute

LEONARD M. CARLSON

PAINTING AND DECORATING

773 Pusey St.

Phone: Mldway 4-8917

COWS WILL BE COWS . . .

and even the selected beauties that produce
your Sanitary Farm Dairies milk sometimes eat
weeds. But you'll never get off-flavors from
weeds or other causes in your Sanitary Farm
Dairies milk because . . .

IT'S

VACUUMIZED

Vacuumization is a process using patented stain-
less steel equipment which removes all air from
milk, and with the air it removes all off-flavors,
such as those caused by weeds, dandelions and
high-acid silage.

Sanitary Farm Dairies employs this revolution-
ary new process which seals in the fine, rich
flavor of pure, fresh milk . . . insures uniform
flavor and quality every day of the year. It's
milk at it "Flavorbest".

"Dairy Products of Fine Flavor"

Phone CA. 4-4991

For service at your home

Sanitary
FARM DAIRIES

SECURITY WHOLESALE GROCERY CO., INC.

Suppliers To

FINER RETAIL FOOD MARKETS, INSTITUTIONS, CLUBS,
HOTELS AND RESTAURANTS

FOR THE FINEST IN FOODS . . .

INSIST ON DINNER PARTY LABEL

321 Grove Street

Saint Paul, Minnesota

FLOWERS

The Ivy Shop

395 No. Snelling Ave.

Saint Paul 4

::

Minnesota

MI. 6-7259

Westlunds

FOOD MARKETS, INC.

QUALITY MEATS, FISH AND POULTRY

Quick Freeze Service
and Frozen Foods

597 N. Snelling Ave.
Midway
St. Paul E4, Minn.

LOCKER RENTALS

Mldway 4-8621

TYPECRAFTERS

VICTOR ANGERHOFER AND ASSOCIATES

500 Robert Street

436 Rossmor Building

St. Paul 1, Minnesota

CApital 4-6036



Introducing . . .

ART KLINEFELTER

Your Indianapolis Life Ins. Co. Representative

568 No. Snelling Ave.

St. Paul 4, Minn.

Business Phone - Mi. 6-6425

(Active Member Central Baptist Church)

Savings Plans—Retirement Income

Special Graduate Plans—for Seniors

Family Plan—Whole family insured one low premium

BEST WISHES

World Tool & Engineering Co.

2611 N. Second Street

Phone: HY. 9505

Minneapolis, Minn.

A Good Bank for
Your Financial Headquarters

3% INTEREST
ON ALL SAVINGS

LIBERTY STATE BANK

SELBY AND SNELLING MIDWAY 6-8681

Member Federal Deposit Insurance Corporation

FOR GROUP TRAVEL . . .

WE OFFER
UNEXCELLED BUS CHARTER
SERVICE

Nationwide — Reasonable Rates

ZEPHYR LINES, Incorporated

FE. 9-6809

Minneapolis

::

Minnesota

MacARTHUR CO.

936 Raymond Ave.

St. Paul 14, Minn.

CONGRATULATIONS . . .

CLASS OF '59

Leroy Lundell

ACE HEATING CO., INC.

SALES - SERVICE
OIL, GAS AND COAL FURNACES

935 Arcade Street

St. Paul 6, Minn.

PRospect 1-4062

CONGRATULATIONS AND BEST WISHES TO THE SENIORS OF 1959

*"Offer the sacrifices of righteousness,
and put your trust in the Lord."*

Psa. 4:5

ROBERT O. WESTLUND

GENERAL CONTRACTOR

1781 Hamline Avenue North



DON EKELUND COFFEE CO.

Distributors of MAXWELL HOUSE COFFEE and
Products of General Foods Corporation

418 Third Ave. No. Minneapolis 1, Minn.
FEderal 6-0524

MI. 6-6710

SNELLING CHIROPRACTIC CLINIC

Dr. N. H. Lidenberg - Dr. G. W. Goodlad

671 No. Snelling St. Paul, Minn.

MIDTOWN BARBER SHOP

634 North Snelling Ave.

The Students of the School appreciate the neat work and pleasing atmosphere of this Christian barber shop. There is a reason why this skilled Christian barber is always busy.

JOHN W. IUANCE COMPANY

808 Pioneer Bldg. Ca. 4-7358

INSURANCE CONSULTANTS

John W. Iuance, Sr. Me. 3-4369
John W. Iuance, Jr. Ga. 9-0161
John G. Chisholm. Pr. 6-2804
Norman R. Kuel. Mi. 8-5662

GENERAL CASUALTY—FIRE—AUTO
LIFE—ACCIDENT & HEALTH—BONDS—HOSPITAL

Meet Your Friends at
The Place with the
Friendly Atmosphere

QUALITY CAFETERIA

Snelling & Van Buren Mi. 4-6319

Hometype Cooking At Moderate Prices

STOREY'S SHELL SERVICE

TUNE-UP - LUBRICATION - TOWING

756 N. Snelling Ave.
Midway 6-9196 St. Paul 4, Minn.

HAMLINE HOTEL

545 North Snelling Ave.
2 Blocks North University Ave.

Reasonable Daily & Monthly Rates

MEALS AVAILABLE IN COFFEE SHOP

Free Overnight Parking

Midway 6-7148

JIM'S R & K SERVICE

PHILLIPS "66"
Gasoline and Oil

EXPERT MECHANICAL REPAIRS

717 N. Snelling Midway 4-1960

VIRG - JIM

WESTERN PENNSYLVANIA DISTRICT

DISTRICT HEADQUARTERS

Room 17 Swartz Building
104 W. Mahoning Street

PUNXSUTAWNEY PENNSYLVANIA



THE ROSE HILL COMMUNITY CHURCH

2499 W. Larpenteur Ave. Saint Paul

FERDINAND BREID, Pastor

GREETINGS . . .
IN THE GOSPEL

FROM

FIRST BAPTIST CHURCH

10th and Harmon

Minneapolis :: Minnesota

DR. CURTIS AKENSON, Pastor

THE

OMAHA GOSPEL TABERNACLE CHRISTIAN AND MISSIONARY ALLIANCE

2006 Douglas Street
Omaha 2, Nebraska

"In the heart of Omaha"

Home of Chapel Studio, World Radio Congregation
Radio Station WOW

Chapel Service broadcast 8:30, and also heard over the
American Family Network and affiliates, WPEL of Mont-
rose, Pennsylvania, WGGG of Salamanca, New York, and
KGDN of Seattle.

CONGRATULATIONS AND BEST WISHES
FOR YOUR TOMORROWS

COMPLIMENTS OF

THE AVENUE ROAD CHURCH

of the Christian and Missionary Alliance

243 Avenue Road

Toronto, Ontario

REV. DONALD R. SHEPSON, Pastor

CONGRATULATIONS FROM . . .

THE ALLIANCE MISSIONARY CHURCH

of Duluth, Minnesota

Sunday School 9:45 A.M.
Morning Worship 11:00 A.M.
Evening Service 7:00 P.M.
Youth Fellowship 8:15 P.M.
Wednesday, 7:30 P.M.

VERNON E. GOWDY, Pastor

OUR REPRESENTATIVES:

Elaine Dincau
Kenneth Gowdy
Shirley Gowdy

28th Ave. West at First St.

Duluth :: Minnesota



Congratulations Class of '59

CHURCH OF THE OPEN DOOR

(Christian and Missionary Alliance)

39th Avenue North and Highway 100
Robbinsdale, Minnesota

Sunday School 9:30 A.M.
Sunday Services 10:45 A.M. & 7 P.M.

DAVID B. HUSTAD, Minister

CONGRATULATIONS TO THE CLASS OF 1959



A storehouse of abundant material and suggestions
awaits you at

CHRISTIAN PUBLICATIONS, INC.
Third and Reily Streets
Harrisburg, Penna.

and

WILLIAM H. DIETZ, INC.
10 S. Wabash Avenue
Chicago 3, Illinois

Everything you need for the Church and Sunday School
Write for a free General Catalog

Congratulations Class of '59

*Sound the alarm through the earth and the heavens!
Summon the slumbering world to attend!
Jesus is coming! the hour is impending!
Sound the alarm to earth's uttermost end!*

*Sound the alarm to the millions that wander
Out in the darkness of heathendom's night!
Tell them the King of all kingdoms is coming;
Tell them of Jesus, and take them the light.*

—A.B.S.

May God's abundant blessings rest upon your lives and work.

The Christian and Missionary Alliance International Headquarters

260 West 44th Street

New York 36, N. Y.

Congratulations to the

1959 Graduating Class

From

THE CENTRAL DISTRICT Of The CHRISTIAN AND MISSIONARY ALLIANCE

Representing the States
of

OHIO - INDIANA - MICHIGAN - KENTUCKY
WEST VIRGINIA - SOUTHERN ILLINOIS
AND SOUTHERN MISSOURI

District Headquarters: Beulah Beach, Ohio
District Superintendent: Rev. David N. Clark

ALASKA IS CALLING

- *The Slavic Gospel Association has been preaching the Gospel in Alaska for 20 years.
- *Beginning January, 1958, our work there became known as the ALASKA GOSPEL ASSOCIATION, of the Slavic Gospel Association.
- *More Bible-trained missionaries are needed.
- *The work is carried on in the English language.
- *The Holy Scriptures and Gospel literature are being distributed; Christ-centered activities for children, youth, adults and servicemen are conducted.
- *Six mission stations have been established. We still have a deficit on 4 of the Gospel Chapels. Perhaps some friends would like to have a share in clearing this debt.

For more information write to:

ALASKA GOSPEL ASSOCIATION of Slavic Gospel Association
Rev. Peter Deyneka, General Director
2434 N. Kedzie Blvd. Chicago 47, Illinois

MUCH PRAYER, MUCH POWER, new book by Peter Deyneka, Russian missionary, evangelist. Order now . . . \$1.50



IN THE NAME OF HER 11,000 ALUMNI . . .

NYACK MISSIONARY COLLEGE

AMERICA'S OLDEST BIBLE COLLEGE

EXTENDS FRATERNAL GREETINGS
TO HER COLLEAGUES AT
ST. PAUL BIBLE COLLEGE

NYACK MISSIONARY COLLEGE - Nyack, New York - Overlooking the Hudson

CHRISTIAN GREETINGS FROM

THE CHRISTIAN AND MISSIONARY ALLIANCE CHURCH

E. Main Street and Third Avenue So.

Sidney, Montana

Congratulations to our students—Hans Vik, Glen Levno, and Cecil Neckles

HAZEL PARK ALLIANCE CHURCH

Rev. Lowell C. Strumpfer
Pastor

PR. 1-1152

J. M. Tewinkel, Director of Music

Sunday School 9:30 A.M.
Morning Worship 10:50 A.M.
Youth Fellowship 6:00 P.M.
Evening Service 7:00 P.M.
Midweek Service, Wed. 8:00 P.M.

WE CORDIALLY INVITE YOU TO
WORSHIP WITH US AT
EAST SEVENTH & WHITE BEAR AVE.
ST. PAUL, MINN.

The Christian and Missionary Alliance Church

220 N. Cass Lake Rd.
Pontiac, Mich.

Congratulations to our student . . .

ROBERT PORTER

CONGRATULATIONS
to the Class of 1959

From the Members

GRAND AVENUE ALLIANCE CHURCH

3100 Grand Avenue South
Minneapolis :: Minnesota

LESTER A. KIM, Minister

"The church in the heart of Minneapolis
with Minneapolis on its heart"

FIRST COVENANT CHURCH

Chicago Avenue and Seventh Street South
Minneapolis, Minnesota

MINISTERS

Rev. Paul P. Fryhling Rev. C. Reuben Anderson

SCHEDULE OF SERVICES

Sunday School, Classes for All Ages 9:45 A.M.
(2 College Age Groups)
Morning Worship Service 11:00 A.M.
Broadcast over WDG, KTIS-FM, Minneapolis; WHLB,
Virginia; KFMW, Fargo
Evening Evangelistic Service 7:00 P.M.
Thursday Evening—Bible Study and Prayer 7:45 P.M.

YOUTH ACTIVITIES

REV. TOM CLENDENEN
SUNDAY

5:30 P.M. League Meeting
6:15 P.M. Youth Fellowship Supper

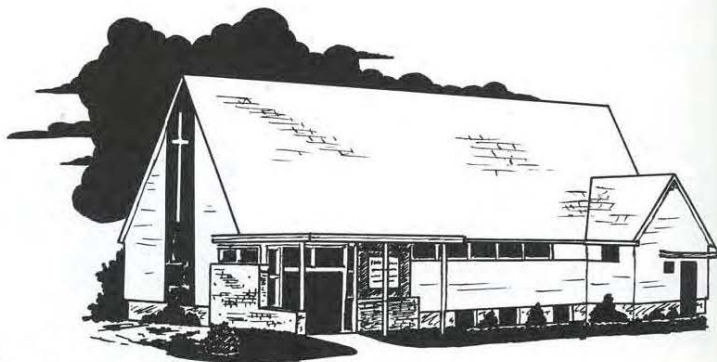
Three age groups comprise THE FELLOWSHIP OF YOUTH LEAGUES, providing an outlet for the interests of youth. A CHRIST-centered program of buoyancy and enthusiasm, geared to our times, includes worthwhile speakers, discussions, films and socials.

WE WELCOME YOU TO WORSHIP WITH US

Congratulations to the
Class of '59

The Northwestern District

MINNESOTA, NORTH DAKOTA, SOUTH DAKOTA, MONTANA, WISCONSIN, NORTHERN IOWA



OPPORTUNITIES FOR TODAY
AND TOMORROW

LESLIE W. PIPPERT, District Superintendent
CARL VALSTAD, Assistant District Superintendent

Northwestern District of The Christian
and Missionary Alliance

District Offices at 1361 Englewood Avenue
Saint Paul, Minnesota

BEST WISHES FROM

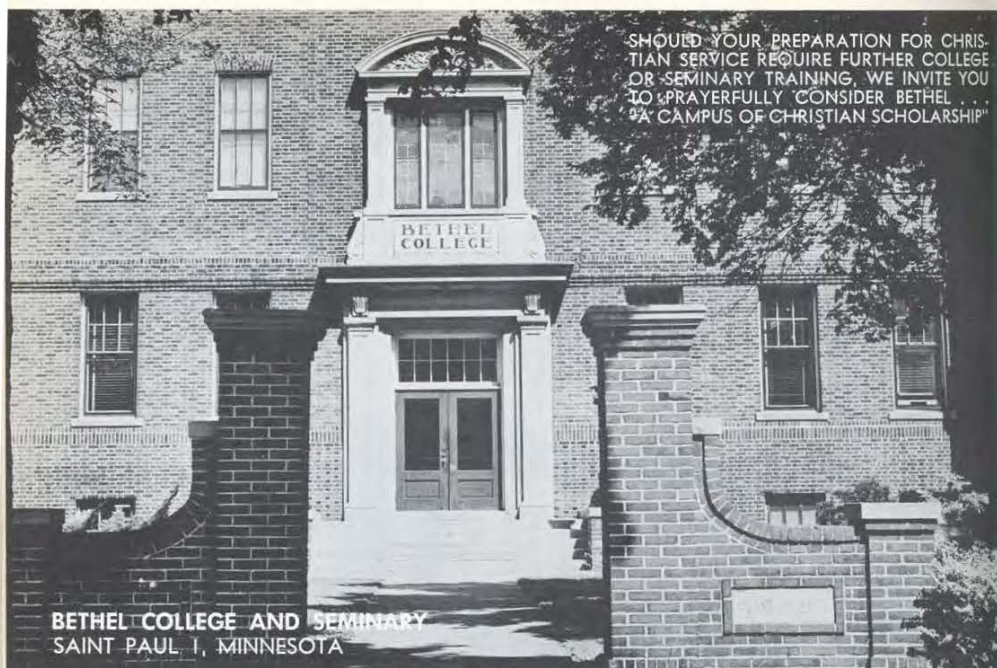
SIMPSON MEMORIAL CHURCH

CHARLES AND FRY STREETS
SAINT PAUL, MINNESOTA

COLVER J. MASON, Pastor

JAMES R. MASON, Assistant Pastor





SHOULD YOUR PREPARATION FOR CHRISTIAN SERVICE REQUIRE FURTHER COLLEGE OR SEMINARY TRAINING, WE INVITE YOU TO PRAYERFULLY CONSIDER BETHEL...
"A CAMPUS OF CHRISTIAN SCHOLARSHIP"

BETHEL COLLEGE AND SEMINARY
SAINT PAUL 1, MINNESOTA



Rev. James T. Cunningham, Pastor

"And whatsoever ye do in word or deed, do all in the name of the Lord Jesus, giving thanks to God and the Father by Him."

Col. 3:17

**HAVELOCK
CHRISTIAN AND MISSIONARY
ALLIANCE CHURCH**

6433 Havelock Ave.
Lincoln, Nebraska

CONGRATULATIONS TO THE CLASS OF 1959

SIMPSON BIBLE COLLEGE
SAN FRANCISCO

The West's "Gateway to World Service"

**The Christian And Missionary
Alliance Church**

Myron J. Malone, Pastor
Osage, Iowa

Congratulations to our students . . .

Esther Bower
Gordon Barker
Hilmore Williams



CONGRATULATIONS TO THE
CLASS OF '59

**Church of
THE CHRISTIAN AND
MISSIONARY ALLIANCE**

"A Christ-Centered Message in the Center
of Billings"

32nd Street and 6th Avenue North
Billings :: Montana



"IN QUIETNESS AND IN CONFIDENCE

Isa. 30:15

SHALL BE YOUR STRENGTH."

THE FRESHMAN CLASS

Cheesemans Park, Denver, Col.

COMPLIMENTS OF The Christian and Missionary Alliance Church

Brinsmade

North Dakota

Rev. James E. Brunko, Pastor

The First Evangelical Free Church

St. Paul, Minnesota

BEN C. ERICKSON, Pastor

"Holding forth the Word of Life."

TRUST

"When nothing whereon to lean remains,
When strongholds crumble to dust;
When nothing is sure but that God still reigns,
That is just the time to trust.

'Tis better to walk by faith than sight
In this path of yours and mine;
And the pitch-black night, when there's no
light,
Is the time for our faith to shine."

The March of Time

Time marches on, its hurrying feet
Are sounding down life's busy street;
We listen to their measured beat,
Time marches on!

Time marches on, its clarion call
Is heard in hut and palace-hall;
Though kingdoms rise and kingdoms fall,
Time marches on!

Time marches on, nor can it stay
To wipe the orphan's tears away;
Nor grief of anguished hearts allay,
Time marches on!

Time marches on, its steady flight
Is heralding approaching night;
And though its locks with age are white,
Time marches on!

Time marches on—'twill end some day,,
When heaven and earth shall pass away;
And then forever and for aye—
Eternity.

ETERNITY! and time no more
Shall march along earth's storm-swept shore
Its toll of years forever o'er—
Eternity.

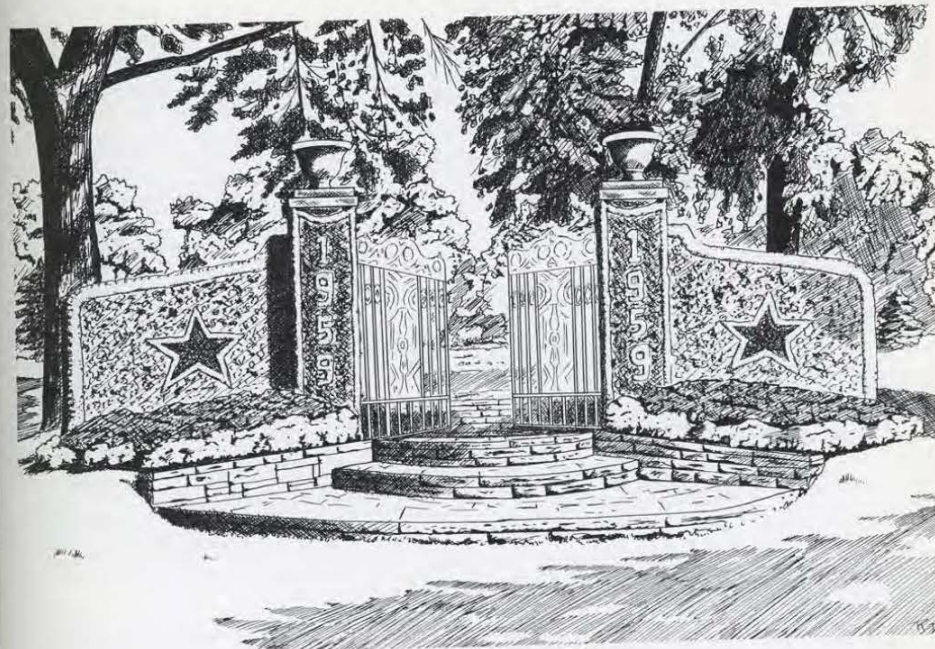
ETERNITY! where wilt thou spend
That dateless age that has no end?
O haste and make thy choice, my friend,
Time marches on!

*"Nay, in all these things
we are more than conquerors
through him that loved us."
Rom. 8:37*

COMPLIMENTS
OF CLASS '60



OUR SUFFICIENCY IS OF GOD II Cor. 3:5



*Lift up your heads, O ye gates; and be
ye lift up, ye everlasting doors; and the
King of glory shall come in.*

Psalms 24:7

SENIOR CLASS
OF
1959

CONGRATULATIONS AND BEST WISHES

TO THE

CLASS OF 1959

* * * *

A HEARTY WELCOME

TO THE

ALUMNI ASSOCIATION

* * * *

"As ye have therefore received Christ Jesus the Lord, so walk ye in him: rooted and built up in him, and established in the faith, *as ye have been taught*, abounding therein with thanksgiving." Colossians 2:6, 7

STUDENT DIRECTORY

ALPHS, Roger, Buffalo Center, Iowa
APFEL, Shirley, Route 2, Norfolk, Nebraska
ARMSTRONG, R. Harlan, 1900 Stevens Ave. S., Minneapolis, Minnesota
ASPSETER, Bonnie, Box 124, Exeland, Wisconsin

BAILEY, Donita (Mrs.), 4842 Greenwood, Lincoln, Nebraska
BAILEY, Roger, 3440 North 66th, Lincoln, Nebraska
BAKK, Merrill, Cook, Minnesota
BARKER, Gordon, Route 4, Osage, Iowa
BARTZ, Richard, 478 W. Maryland, St. Paul, Minnesota
BATDORF, Phyllis, Route 2, Verndale, Minnesota
BEATTY, Harold, 1904 Nash Ave., Pittsburgh 35, Pennsylvania
BEEBE, Alice, Remer, Minnesota
BLACK, Alice, 1912 Walnut, Waukegan, Illinois
BLANCHARD, Lewis, Route 4, Camden, Tennessee
BLOMQUIST, Arlene, 619 Ninth St., Rockford, Illinois
BOWER, Esther, 721½ State St., Osage, Iowa
BROWN, Darlene, Wolf Point, Montana
BROWN, Gloria, 2900 W. Old Shakopee Rd., Minneapolis 20, Minnesota
BUNCE, Rona, Route 2, Hudson, Wisconsin
BUSH, Richard, Box 5217, Pensacola, Florida

CAIN, Oralee, Amery, Wisconsin
CANTRIL, Alice, 126 S. Drive, Ottumwa, Iowa
CARLSON, Carol, Pine River, Minnesota
CARLSON, Melvin, 1321 North H St., Fremont, Nebraska
CHAN, Benjamin, 305 Jaffe Rd., 1st Floor, Hong Kong, China
CHRYST, Carol, 1308 Helen St., North St. Paul 9, Minnesota
COLBY, Elaine, 2921 Fourth Ave. E., Hibbing, Minnesota
GREES, Helen, 717 South Oak Park Ave., Oak Park, Illinois
CUMMING, Gordon, 220 Poplar Ave., Turtle Creek, Pennsylvania
CUMMING, Nancy (Mrs.), 619 Madison Ave. E., Pittsburgh, Pennsylvania
CURTIS, Laurie, 3615 Third St. N., Minneapolis 12, Minnesota

DAMOUBE, Arlene, Dannebrog, Nebraska
DAVIDSON, Maurice, 7921 Leighton, Lincoln, Nebraska
DAVIS, Mabel, 3252 Edgewood S., Minneapolis, Minnesota
DECKER, Frances, Buffalo, Minnesota
DECKERT, Roane, Richey, Montana
DINCAU, Elaine, 1428 89th Ave. W., Duluth, Minnesota
DRAPER, Marjorie, 325 West Lehigh, Englewood, Colorado
DRIEMEYER, Ella Mae, Tyler, Minnesota
DROLLINGER, Marylee, 1924 Merl Ave., Cleveland 9, Ohio
DUNCAN, Julia, 972 Howard St., Green Bay, Wisconsin

EARL, Norman, 5408 W. George St., Chicago 41, Illinois
EASTMAN, Marlyce, Hubbard, Minnesota
EDBLOM, Rodney, Cook, Minnesota
EDINGTON, Joseph, Route 2, Box 305, West Terre Haute, Indiana
ELWOOD, Shirley, Route 5, New Castle, Indiana

FARLEY, Shirley, Box 60, Trego, Montana
FLODMAN, Marlene, Route 1, Box 5640, Turlock, California
FOLSTROM, George, Bejou, Minnesota
FORD, Marjorie, Hammond, Wisconsin
FRANKENBERRY, Janet, 44 Edgehill St., Morgantown, West Virginia
FRANZ, Donald, 4075 Lakeland, Robbinsdale, Minnesota
FREDERICK, Paul, 207 North 19th Ave., New Brighton, Pennsylvania
FREDSTROM, Claire, 3135 North 66th, Lincoln, Nebraska
FULLER, Walter, Sebeka, Minnesota

GATTEN, Ardath, Danbury, Wisconsin
GEHL, Ellen, 1320 North Erb St., Appleton, Wisconsin
GEIST, Gail, 4907 North Habana Ave., Tampa 3, Florida

GERSTEL, Marlene, 415 Duquesne Ave., Canonsburg, Pennsylvania
GOWDY, Kenneth, 113 North 28th Ave. W., Duluth 6, Minnesota
GOWDY, Shirley (Mrs.), Bigelow, Minnesota
GRAY, Beverly (Mrs.), Deerwood, Minnesota
GRAY, Milo, Deerwood, Minnesota
GRAY, Norma (Mrs.), 1396 Thomas Ave., St. Paul, Minnesota
GRAY, Ronald, Deerwood, Minnesota
GREEN, Constance, 4360 South Grant, Englewood, Colorado
GREGERSEN, Karen, Menominee, Michigan
GREINER, Georgia, Lyle, Minnesota
GRINDLE, Kenneth, 3415 South Washington St., Marion, Indiana
GROSSOEHME, Jerome, 1624 South 32nd Ave., Omaha 5, Nebraska
GUIDA, Mavis, Tyler, Minnesota
GUNTHER, Paul, 430 Churchdale Ave. W., Salem, Oregon

HAFELE, Elaine, Intake, Montana
HAGEN, Helen, Holcombe, Wisconsin
HALLQUIST, Robert, 2444 28th Ave. S., Minneapolis, Minnesota
HANAFORD, Susan, Monticello, Minnesota
HANKE, Judith, Princeton, Minnesota
HANKE, Sylvester, Princeton, Minnesota
HANSEN, Marguerite, 3127 Vincent Ave. N., Minneapolis, Minnesota
HARLIN, Marilyn, 401 Hemlock St., Hollidaysburg, Pennsylvania
HARPHAM, Kenneth, Carvin, Minnesota
HAWS, Peggy, Clintonville, Wisconsin
HEDRICK, Athrea, 2222 Century Drive, Columbus, Ohio
HENDRICKSON, Craig, Battle Lake, Minnesota
HONEYWELL, Inez, Neligh, Nebraska
HORST, Ruth, Thornton Branch, Route 1, Box 73, Denver 16, Colorado
HOWE, Ina, Portsmouth, Iowa
HUBIN, Elva, Route 2, Clara City, Minnesota

JACOBSON, Murray, Penneck, Minnesota
JENKINS, Rita, Staples, Minnesota
JENNINGS, John, 1124 Lane Place, St. Paul, Minnesota
JENSEN, Gordon, Star Prairie, Minnesota
JOHNSON, Audre, Pine River, Minnesota
JOHNSON, Carol, Milaca, Minnesota
JOHNSON, Lester, 114 Miller Ave., Norfolk, Nebraska
JOHNSON, Marjorie, 920 East Orange, St. Paul, Minnesota
JONES, Marilyn, Pine River, Minnesota
JONES, Patricia, 383 Highland Ave., Turtle Creek, Pennsylvania

KARKLIN, Robert, 719 Portland, St. Paul, Minnesota
KELCK, Ruth, Route 3, Mason City, Iowa
KERSEY, David, 3233 Grand Ave. S., Minneapolis, Minnesota
KERSEY, Donna (Mrs.), 9927 Harriet Ave. S., Minneapolis, Minnesota
KERSEY, Tay, 3233 Grand Ave. S., Minneapolis, Minnesota
KILPPER, Barbara, 542 Yorkshire, Houston, Texas
KINNICK, Merle, White Sulphur Springs, Montana
KLAUDT, Gerald, Arlee, Montana
KNABENSHUE, Dale, 466 Van Rossum St., Green Bay, Wisconsin
KOEPP, Alice (Mrs.), Junius, South Dakota
KRAUSE, Gladys, Waubay, South Dakota
KUHN, Bernard, 1477 Blair, St. Paul, Minnesota
KUHN, Rae Joyce (Mrs.), 1477 Blair, St. Paul, Minnesota
KULP, Paul, Box 10, Frankfort, Indiana
KYLE, Mary (Mrs.), Echo, Minnesota
KYLE, Thomas, 1396 Burkhardt Ave., Akron, Ohio

LEE, Lydia (Mrs.), 586 Rama IV Rd., Sapan Luang, Bangkok, Thailand
LEIGHTNER, Douglas, 315 Slater Drive, Fairbanks, Alaska
LEISCHER, John, Oconomowoc, Wisconsin
LEVNO, Glenn, 724 E. Main St., Sidney, Montana
LEWIS, James, 302 Grand Ave., Ottumwa, Iowa
LEWIS, Marylan (Mrs.), 1707 Grand, Billings, Montana

STUDENT DIRECTORY...cont'd

LINDGREN, Donald, West Fargo, North Dakota
LIVINGSTON, Mary, 2836 30th Ave. S., Minneapolis 6, Minnesota
LOBERG, David, 1456 South 76th St., West Allis 14, Wisconsin
LUNDELL, Marilyn, Kennedy, Minnesota

McDONALD, Burley, 1922 Alabama St., Longview, Washington
McKEAN, Joan, 3347 Upton Ave. N., Minneapolis 12, Minnesota
McVETV, Douglas, 2729 Park St., Regina, Saskatchewan, Canada
MARVIN, Leola, Onamia, Minnesota
MATEJKA, Wayne, Alberta, Minnesota
MATHESON, Laurel, Route 1, Box 135, Wyoming, Minnesota
MEACHAM, Carol, 3743 Hyde Park Ave., Cincinnati 9, Ohio
MELTZER, John, 809 Oakland Ave., Piedmont, California
MILLER, Shirley, Saybrook, Illinois
MING, Beverly, Bloomfield, Montana
MINNICK, Dallas, 182 East Ave., Johnsonburg, Pennsylvania
MOON, Kenneth, Box 1291, Lumberton, North Carolina
MOORE, Elaine, 2529 North 76th, Omaha, Nebraska
MOORE, Fred, 1831 Loomis St., Rockford, Illinois
MORGAN, P. Allen, Milesville, South Dakota

NAGEL, George, Mtd. Rt. 11, Ellwood City, Pennsylvania
NECKELS, Cecil, 418 Seventh St. S. E., Sidney, Montana
NEEDHAM, Esther Lu, Big Lake, Minnesota
NELSON, Ann, 2602 Archwood, Cleveland, Ohio
NELSON, Charles, 1365 Van Buren, St. Paul, Minnesota
NOBLE, Nancy, 1007 Grandview St., Dixon, Illinois
NYBERG, Annette, Hinckley, Minnesota

OHM, Florence, Potter, Wisconsin
OLSON, Darlys, Tracy, Minnesota
OLSON, James, Blairburg, Iowa
OLSON, Robert, 115 Fremont St., Janesville, Wisconsin
OPPERTSHAUSER, Arlene, Maple Plain, Minnesota
OSCARSON, D. Edward, Malta, Montana

PABST, Katherine, 3801 Randolph, Lincoln 10, Nebraska
PARDUN, Neil, Blairburg, Iowa
PATTERSON, Clifton, 2124 Jones St., Sioux City Iowa
PAULAT, Deanna (Mrs.), 709 S. Meadow Lane, Minneapolis Minnesota
PAULAT, Martin, 410 Front St., St. Paul 3, Minnesota
PAULSON, Donald, 720 Second Ave. N., Sauk Rapids, Minnesota
PENDELL, Anne, 2495 Harrison Rd., Columbus 4, Ohio
PENTON, Paul, 2076 Margaret, St. Paul, Minnesota
PETERS, Priscilla, 825 11th Ave. N., Glasgow, Montana
PETERSEN, Patricia, Marshall, Minnesota
PETERSON, Betsy (Mrs.), 9330 Delphie, Des Plaines, Illinois
PETERSON, Clifford, 6875 Northwest Highway, Chicago, Illinois
PORTER, Robert, 11 Victory Ct., Pontiac, Michigan
PRAHL, Sylvia, 1052 Boughton St., Watertown, Wisconsin
PUST, Raymond, 608 Third St. S. E., Sidney, Montana

RADFORD, Paul, 323 1/2 North Eighth, Brainerd, Minnesota
RALLS, Patricia, 3700 43rd Ave. S., Minneapolis, Minnesota
RALLS, Phyllis, 3700 43rd Ave. S., Minneapolis, Minnesota
RAMER, Eva, 3409 Oak Grove Ave., Dallas 4, Texas
RAND, Hazel, 814 Girard Ave. N., Minneapolis, Minnesota
RAUSCH, Paul, Fish's Eddy, New York
REDFORD, Paul, 1757 Eighth St., Wyandotte, Michigan
REMYINGTON, LaDonna, Janesville, Minnesota
RICHARDS, Wilma, 3223 Wright St., Des Moines, Iowa
ROBERTS, Adele, Lambert, Montana
ROBERTS, Margaret (Mrs.), Poplar, Montana
ROBINSON, Clyde, Oak Grove Trailer Park, New Brighton, Minnesota
RUDE, Joyce, Lakeland, Minnesota

SACKETT, Louise, Kinsman, Ohio
SCHAEFER, Barbara (Mrs.), 1415 South Third St., Watertown, Wisconsin
SCHAEFER, Carolle, 110 North 25th St., McAllen, Texas
SCHAEFER, Richard, 1415 South Third St., Watertown, Wisconsin
SCHOCK, Carol, Wolf Point, Montana
SCHWOCH, Jeanette, Barnum, Minnesota
SEEKINS, Floyd, Amery, Wisconsin
SEVERSON, Ruth, Tyler, Minnesota
SHAMBACH, Gordon, Brismade, North Dakota
SIECHERT, E. Paul, 1415 North 1st Ave., Upland, California

SKAGGS, Robbie, Oark, Arkansas
SKIFSTAD, Joan, Big Falls, Minnesota
SKOR, Jon, Wildrose, North Dakota
SLATER, Richard, 1911 Brown, Fort Wayne, Indiana
SMITH, David, Route 4, Charles City, Iowa
SMITH, Lucille (Mrs.), 3201 South Downing St., Englewood, Colorado
SMITH, Wanda, 131 Freda St., Pittsburgh 35, Pennsylvania
SNYDER, Alfred, Powell, Wyoming
SODERQUIST, Mac, Willcox, Arizona
SOLVIG, Roy, 10435 Lyndale St., Melrose Park, Illinois
ST. JOHN, Frank, 5022 East 115th St., Garfield Hts., Ohio
STANTON, E. Blythe, 806 Seventh Ave. W., Kalispell, Montana
STARKEY, Roberta, 3011 School St., Des Moines, Iowa
STEINKAMP, Orrel, Renville, Minnesota
STEINKAMP, Virginia (Mrs.), 773 Pusey St., St. Paul, Minnesota
STENLUND, Gary, Baudette, Minnesota
STIGERS, Trixie, Box 114, Beaverdale, Pennsylvania
STOWELL, Carol, Tracy, Minnesota
STUCK, Patricia, 5101 Lindbergh, Dayton 49, Ohio
STUTLER, Jackson, Holly, West Virginia
SUNDEEN, David, Route 3, Lincoln, Nebraska
SWANSON, David, Stephen, Minnesota
SWANSON, Leslie, Richey, Montana

THIELBAR, Gerald, Route 1, Drummond, Wisconsin
TOAVS, Warren, Wolf Point, Montana
TREECE, James, 1809 E. 41st St., Minneapolis 7, Minnesota
TRIMBLE, C. Ross, 312 Johnson St., Wolf Point, Montana

VALENTINE, N. Ned, 619 South College Drive, Bowling Green, Ohio
VAN HOMER, Donna, 2418 Farley St., Flint, Michigan
VIK, Hans, Girard Rt., Sidney, Montana

WALKER, Jimmie, 3916 N.W. Ninth, Oklahoma City, Oklahoma
WALKER, Nancy, 3916 N.W. Ninth, Oklahoma City Oklahoma
WARREN, William, 637 Louisiana St., Gary, Indiana
WATNE, Samuel, Galt, Iowa
WAWERZIN, Dorothy, Route 1, Box 55, Menominee, Michigan
WAY, K. Leon, Route 2, Branch, Michigan
WAYLAND, William, 733 West Augusta, Spokane, Washington
WELLS, Donna, 2726 Third St. N., Minneapolis, Minnesota
WENDLEGAST, Thomas, 1111 Rose Drive, Louisville, Kentucky
WEST, Donald, Mechanicsville, Iowa
WESTLUND, Milton, 514 Yellowstone Ave., Billings, Montana
WHEELER, Harley, Henning, Minnesota
WILLIAMS, Hilmere, 205 Chestnut St., Osage, Iowa
WITTMER, Irvin, Pollock, South Dakota
WOOD, Jean, Onamia, Minnesota
WOOD, Robert, 1555 McKay Ave., Louisville, Kentucky

YANG, James, 25 Prat Ave., Kowloon, Hong Kong, China
YEATS, David, 1055 Shawano Ave., Green Bay, Wisconsin
YIP, Helen, 35 Wai Ching St., Kowloon, Hong Kong, China
YORK, Marvin, Star Route, Loranger, Louisiana