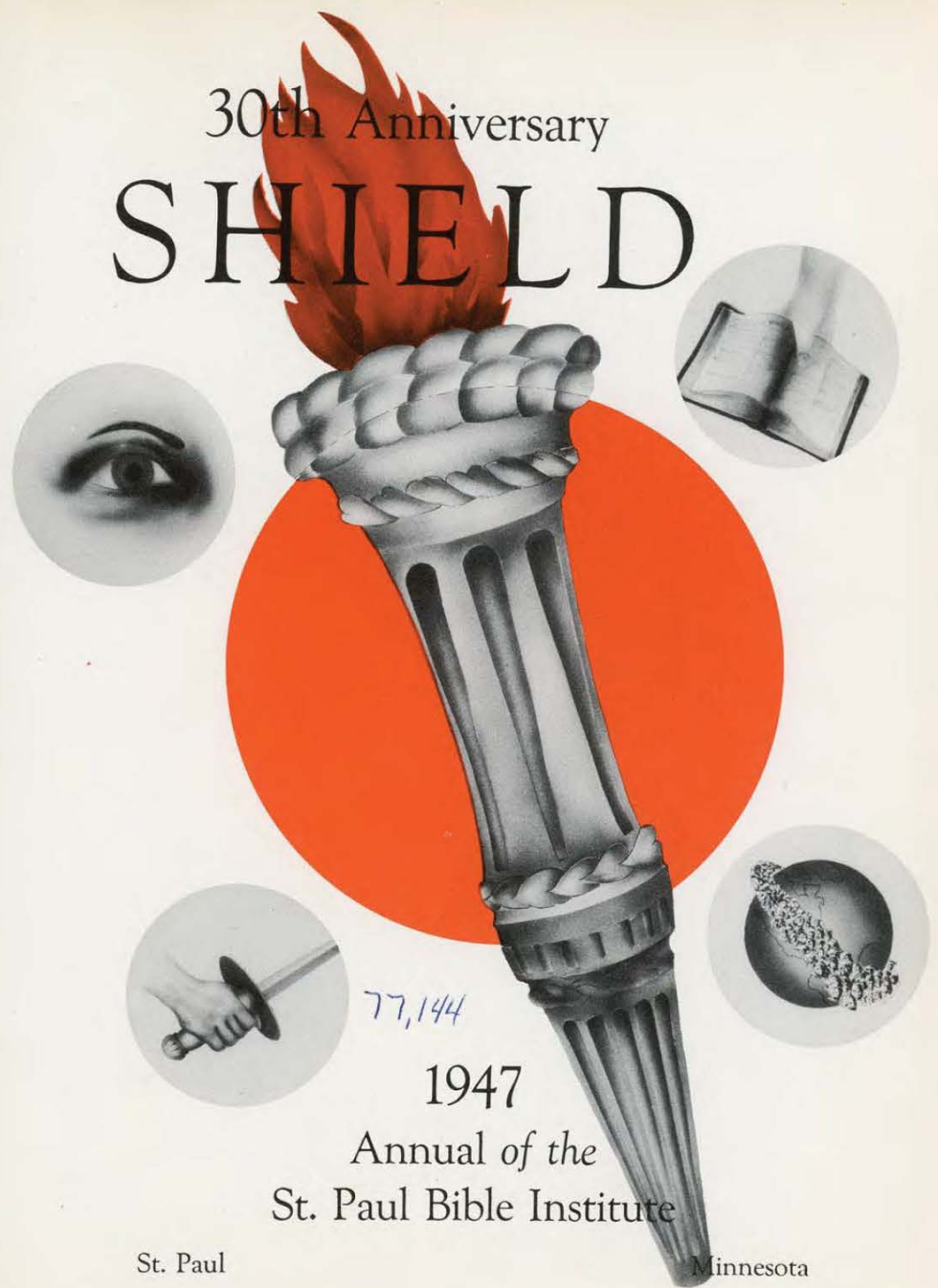


Shield
'47

30th Anniversary
SHIELD



1947
Annual of the
St. Paul Bible Institute

St. Paul

Minnesota

CONTENTS



VISION

Faculty and Administration



MEN

Classmen



APPLICATION

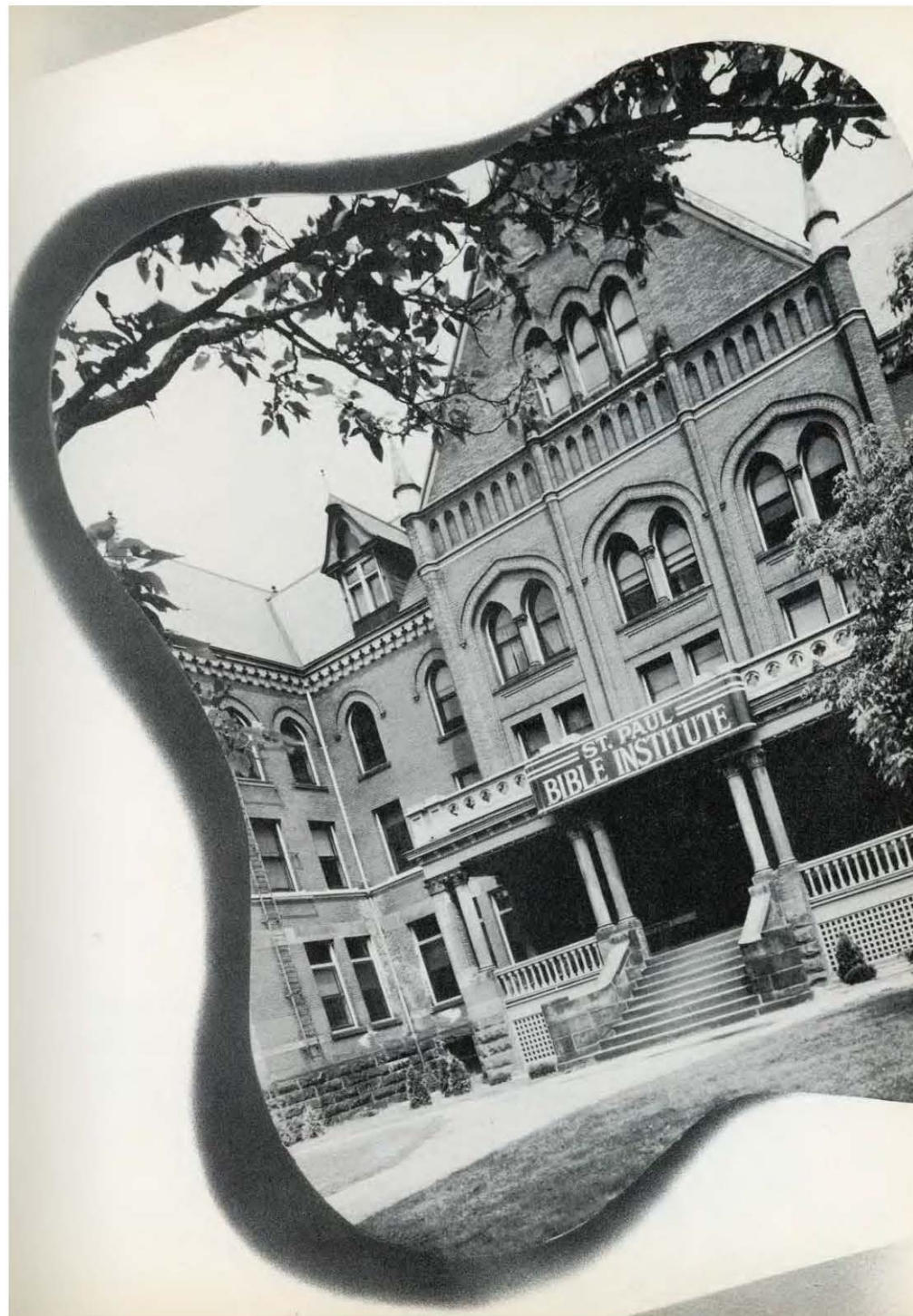
Christian Service



CHALLENGE

World Missions

Thirtieth Anniversary



DEDICATION

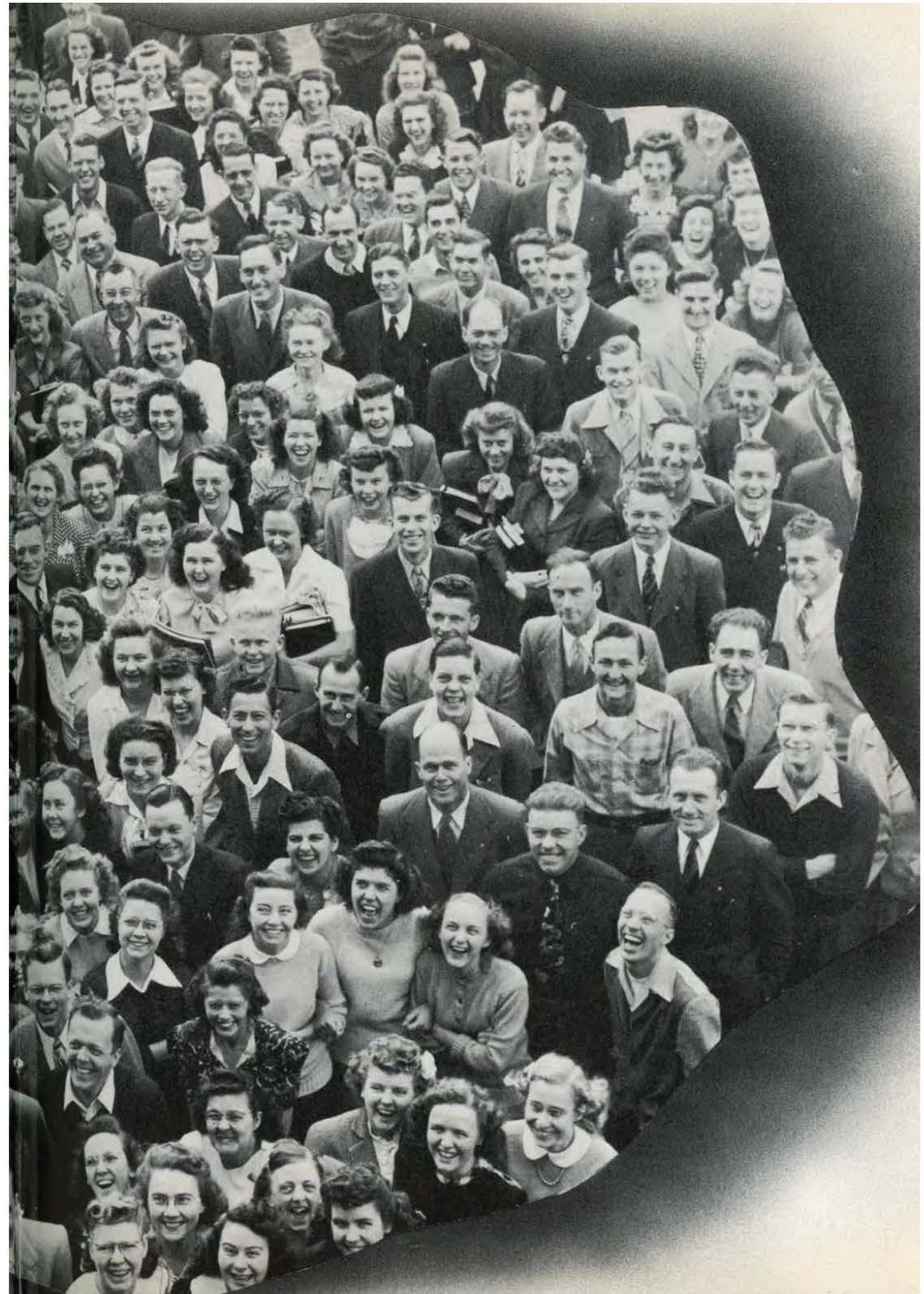
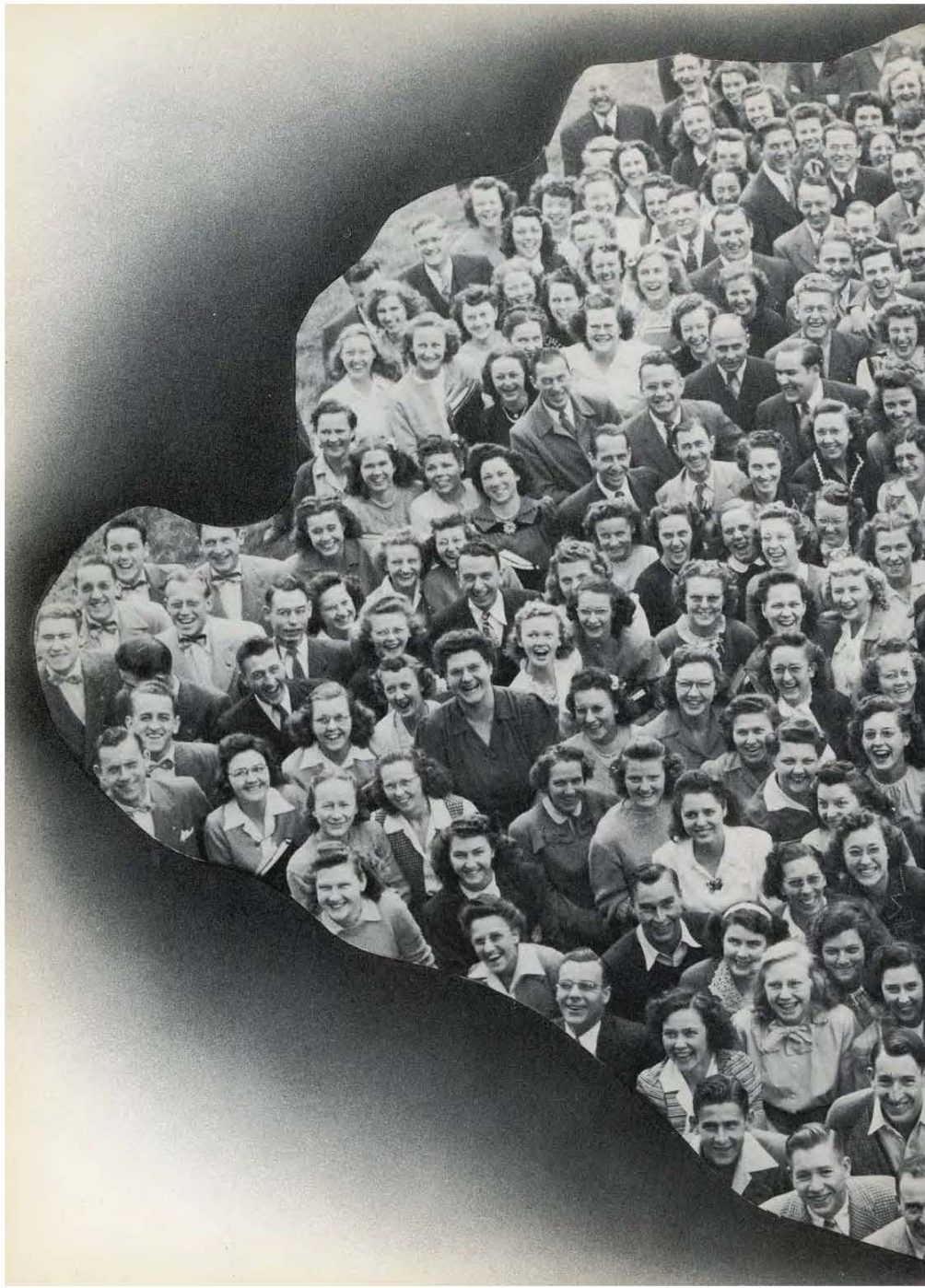


As a monument to the VISION of our President-Dean stands the new Men's Dormitory. With him is his daughter Ruth, a Junior in the Mission's Course.



IN THESE last days when prominent public men are emphasizing the need for leadership we can think only of our own beloved President-Dean. We may observe in him a man of quiet dignity, a gentleman who presents a wonderful example of sane, unostentatious, spiritual leadership.

In Mrs. Strohm, his beloved wife, we find a God-given helpmate. Her quiet charm and poise, her quick smile and friendly greeting has endeared her to all of us. To Rev. and Mrs. G. D. Strohm we respectfully dedicate this 30th Anniversary Shield.





Can't a Girl Dream?



It's been quite a job — this book I mean. Now that it is finished I feel sort of sentimental. The book is dedicated. The advisor is recovering. The staff is still in bed. And I've been thinking.

They say that editors may write what they want to in a book. If that is so then I am not taking too great a liberty. It is strange to think of graduating. It is difficult to realize that now we must go on to the work which the Lord has appointed us to — difficult yet glorious. All of us seniors will be somewhere in the service of the King next year, which means that most of us will be breaking our final home ties. Some of us will be leaving those who have prayed for us since we were children, those who have placed their faith and confidence in us as children of the King and servants of the Master. Others will be leaving those who do not know what it is to love the Lord Jesus Christ with all their hearts, to walk with Him day by day and know that He will never leave them nor forsake them.

It is of these that we think. All of us love our parents . . . but oh, what a stronger bond of love there is when our hearts are united in the love of God! And so, as we leave the mothers and fathers who have given us such a wonderful heritage, we cannot but express to them our love and devotion, and ask that now they follow us with their earnest prayers that He might use us as witnesses of His grace and love and that young and old alike might learn to know Him as their Savior from sin and as their Coming King.

1916-17 The Story Never



Rev. and Mrs. J. D. Williams, the founders of the St. Paul Bible Institute.

(Much of the following material is taken from an article written by Rev. William Stuart McBirnie, an alumnus of the St. Paul Bible Institute.)

One hundred years ago there were no Bible Institutes in America — there was no need for them. Frontier colleges and seminaries were yet in their infancy. The swing to liberal theology and sterile methods of Gospel propagation that gave rise to the Bible Institute had not yet taken place.

When, however, it became apparent that the denominations were turning to modernism, those who vigorously championed the evangelical faith began to see the need of establishing schools that would train men and women with the aim of producing skilful soul winners and warriors that would be mighty in the "Faith once delivered."

And so it is this thrilling romance of conquest of the hearts of men by the "Young Prince of Bethlehem" that is the story of the school that is now called "The St. Paul Bible Institute." Listen to its story.

It was the year 1916. Spring was in the air, although snow was on the ground—and there was spring in the hearts of Rev. and Mrs. J. D. Williams in spite of the cold Minnesota winter. The Williams had not been long in Minnesota for it had been only the previous year that the New York Board had appointed Mr. Williams to the Superintendency of the Northwest-ern District of the Christian and Missionary Alliance. The Williams fitted well into their new responsibility and the Twin Cities soon became the focal point

from which the work might radiate into the surrounding towns and states.

Suddenly there was a knock heard at the door of the Williams' home. There stood a young farmer, fresh from a quarter section of Dakota farmland. He began by saying—"I must preach the Gospel! Teach me God's Word." What could this mean—there were no facilities for teaching anyone. But the young farmer would not leave. Weeks passed. Three other men joined the first one. They must have training! But how? There was no place to meet. The situation seemed impossible. But God had a way. He chose to honor a servant of His—a man by the name of Newton Frost.

Mr. Frost opened his home to be used as a meeting place for Bible classes — and so the Frost home became the first home of the St. Paul Bible Training School.

There were four boarding students that first year. Because the arrangement was only temporary some place must be found that could be permanent, more adequate to meet the demands of the now increasing interest.

After a time of prayer the hearts of the group were turned to the consideration of a grazing lot on the corner of Fry and Sherbourne Avenue. It was under a large oak tree on that lot that Mr. Jackson, "Uncle Morgan," J. D. Williams and E. C. Swanson knelt in prayer and faith, in full confidence in God. "Already," writes Mr. Williams, "we are daring to think that perhaps we could here establish a home for Bible training." God answered. On October 12, 1916, a foundation for a school building was laid. When the building activities began there was but \$28 in the building fund. God miraculously supplied the need. A friend of the founder wrote one check for \$5,000—then another for \$10,000, and yet more from time to time. God was gracious.

Then the great day arrived — October 3, 1917. The new training school was opened and 26 boarding students, with many night class enrollees, made the first real start of the St. Paul Bible Institute.

During the first year such luminaries as A. B. Simpson, Gregory Mantle, Charles Blanchard, Max Wert-

To Be Forgotten 1946-47

heimer, Lion Tucker, W. M. Turnbull, P. W. Philippott, Oswald J. Smith, and others, visited the school and the new Tabernacle which was opened July 9, 1918 with a capacity crowd of 2,000. Because of these men the school gained more and more recognition. It became necessary in 1919 to add new teachers. Among those added was Joseph Hogue, the "Scotch Irish" evangelist, and elderly Mr. Chindler. Harold Freligh, a student of 1917, returned in 1919 as a teacher in which position he remained for 13 years.

The first graduating class was, of course, small since only four students had begun as freshmen in that 1916 class. The name of the first graduate is Rev. Ezra Gerig, now nationally known as the pastor of the Church of the Great Commission, Portland; Ore.

But now the size of the student body began to grow by leaps and bounds. In 1919 there were almost 50 students, in 1920 over 100, and in 1924, eight years after its founding, 152 students were enrolled. A large chapel, seating 400, and a dining room and kitchen, were added to the school at a cost of \$15,000. Many new departments were added to the school. Mrs. Gertrude Rutenber was added to the faculty as Instructor in Teachers' Training and History, in which capacity she served until 1943 when she became an honorary member of the faculty.

One of the sources of inspiration came from the many missionaries who visited the school every year. Then, as now, it proved to be one of the most heart searching and glorious experiences of days at St. Paul. It gave practical results in that between 30 and 40 missionaries went forth from the school in the first 10 years of the school's existence. In 1922, in a period of two months, student activity in the Christian work had resulted in 234 souls saved and 948 calls made, and 73,000 tracts given out! Present day students will have to look to their laurels!

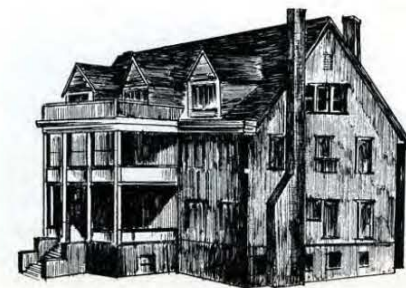
Then, unexpectedly, a call came from the Annual Council of 1923, which met that year in St. Paul, for Rev. and Mrs. Williams to go to the Philippines to establish a training school for native workers. William Christie was appointed as Superintendent for that period of their absence—one year, and Harold Freligh accepted the position of "Principal." And so St. Paul bade goodbye to a good and great man and his capable wife.

Attendance for the next five years held to about

130-150. In 1926 the graduating class numbered 53, the largest yet in the ten years of the school's existence. However, the depression years hit hard and the number of students dropped to 80. In 1929 the number of graduates had dropped to 30. At the depth of the depression the fortunes of the school were at their lowest ebb. The enrollment had dropped to 78 in the fall term. Then in August of 1932, Principal Freligh left the school to take further training in the East. Mr. Freligh's contribution to the school had been great. His Bible teaching left an impact on the lives of all the students and the school felt a keen sense of loss at his departure. Rev. G. D. Strohm, returned missionary from China and the Philippines, was the commencement speaker at the graduating ceremonies for the class of 1932, and the following summer was engaged in missionary conferences throughout the District. When Mr. Freligh resigned, the District Committee approached Mr. Strohm, then holding a convention in Duluth, with the call to the Deanship of the Bible School.

And so it was that Rev. G. D. Strohm began his work as Dean. Immediately the results of his leadership became apparent. The next fall the enrollment was in the high 90's; the second semester there were over 100 and from there the enrollment climbed until in 1946 there were 248 students enrolled in the fall session of the day school and 79 in the night school.

Mr. Strohm immediately began the program of restoring the school to the standing of earlier years. He arranged long tours during the summers, and shorter ones during the weekends, to the various



The first permanent home of the St. Paul Bible Institute—1635 Sherbourne Avenue.

churches throughout the Middle West. He featured a carefully planned musical appeal based upon the call of missions and the challenge of missions, and the challenge of consecration.

The next step was to strengthen the faculty. In 1933 Charles Zeek, formerly of the Beulah Beach Bible School, came as a full time Bible Instructor. J. Merrill Tannehill, Instructor in Music, came from Minneapolis on a part time basis. In 1934 Gordon Meyer, pastor of the Alliance church in Duluth, Minnesota, was called as the Instructor in Speech. In the same year L. A. Perkins was called as the pastor of the Alliance Tabernacle in the Midway, and he joined the faculty as the Instructor in Homiletics and Old Testament.

Thus, through careful promotion and a strengthened faculty, the school was able to begin an upward growth in numbers as well as in effectiveness, that has lifted it to a place of prominence among Bible Institutes.

By 1935 over 1200 students had been in attendance at the St. Paul Bible Training School. Of this number 435 had graduated and some 48 had gone into foreign mission service. Of the 105 District workers 77 had received training at the school.

But it was becoming more and more evident that new quarters must once again be sought. After much prayer, attention was called to the Norwegian Lutheran Synod of North America which had in 1901 built a large, substantial, brick seminary building (at a cost of a quarter of a million dollars), at the corner of Hamline and Capitol Avenues. Because of a union in Lutheran Synods another location was chosen for a united seminary, which in turn left the St. Paul building vacant. It remained vacant until 1935 when it was offered in trade to the Northwestern District for the District properties and \$10,000. The \$10,000



One of the first Missionary Leagues to travel with Rev. G. D. Strohm.

was an impossible sum for the District and the matter was tabled. But, in March, 1935, the miracle happened. The Lutheran representative offered the building at an even exchange. The "new quarters" which had lain idle for many years required much renovating and those who labored at the task of cleaning and painting will still painfully tell of the shambles the building had become in the inside. Finally, with the help of student volunteers and professional workmen, the huge task was completed.

In the summer of 1935 the Training School moved from 1635 Sherbourne to 1361 Capitol Avenue and the District Headquarters took offices in the new building. The same year J. A. Peterson succeeded E. C. Swanson to the Superintendency of the District and Presidency of the School.

J. Merrill Tannehill joined the faculty of the school in a full time capacity, and with him came Theodore Bergman and George Hultgren to bring the music staff to four. Miss Maude Street had served for many years previous on the music staff. She continued in this capacity until 1941.

The five years between 1935 and 1940 were years of growth and change. The average age of the student became lower and the average pre-education requirement higher. The enrollment of the school mounted steadily. More and more denominations came to be represented in the student body. Students came from practically every state in the union and occasionally from foreign countries, especially Canada. Activities during this era included in 1936 the publication of the school paper, the "Zithian," later changed to the "Institute Digest" in 1937-38, and the "Institooter" in 1945. It was in 1939 that the Senior class founded and published the first school yearbook, "The Shield."

Then war came. World War II began in September 1939 — but the St. Paul Bible Institute, as it was now called, did not feel the effects of it until the selective service acts were passed and the rearmament program brought a new prosperity to the land.

Like all other educational institutions, St. Paul suffered a depletion of the student body. However, the energetic efforts of President-Dean Strohm were able to maintain an excellent enrollment even though the number of men was proportionately less.

The year 1941 brought another change. Dean G. D. Strohm and Miss Cora Schultz (who was matron at this time and who had been connected with the school from the early days) accepted positions at the Missionary Training Institute at Nyack. Upon Mr. Strohm's departure L. A. Perkins became the Dean of the school and the position of Dean of Men was

filled by Stanton Richardson, a graduate of the class of 1940. Mr. Richardson served for one year and Mr. Zeek succeeded him for a second term as Dean of Men in 1942-43.

In the early months of 1943, upon the resignation of Dean Perkins, Mr. Strohm was recalled from Nyack and once again became the head of the Institute. When Mr. Strohm returned a distinct change came into the school and its policies. Up to this time the Superintendent of the Northwestern District had been, by virtue of office, the President of the school. Now, upon the recommendation of the New National Board of Education, the offices of Dean and President were merged and the new office which Mr. Strohm accepted was that of President-Dean.

Many changes were made that were definite improvements. The physical aspect of the campus and building was improved by the addition of shrubbery, the change of offices for greater efficiency, the enlargement of the Institute Book Store, the installation of the interoffice communication and public address system (in honor of Chaplain Floyd Richert of the class of '33 — the first St. Paul Bible Institute Chaplain to be killed in service), and the strengthening and change of location of the library. And with these changes came another strengthening of the faculty of the school: H. L. Turner as the Director of the Bible and Theology Department; Donald J. Kenyon as Dean of Men and Instructor in Bible; Miss Ethel Foust, formerly of Taylor University, as Instructor in the Humanities.

In 1945 Charles H. Shaw was appointed to the new and responsible position of Business Manager, while Miss Mary Hoffman (now Mrs. W. Myers) was appointed to the new position of Librarian.

Then a new step was taken that is to set a precedent for years to come. On February 12, 1946, the St. Paul Bible Institute presented World Missions Night. Six student speakers spoke of the needs of the world all around, while the Choral Club assisted in setting the musical background. It was such a challenge to the hearts of young men and women that scores rose to their feet in a new consecration to the Lord of the Harvest.

Yes, the year 1946 ushered in one of the most glorious in the history of the St. Paul Bible Institute. New strides were taken; great things were accomplished for the Lord and Master. Praise His Holy Name!

The year 1946 saw the Choral Club catch a new vision of a lost world that needs Christ — saw them reach out across the continent to the east and the

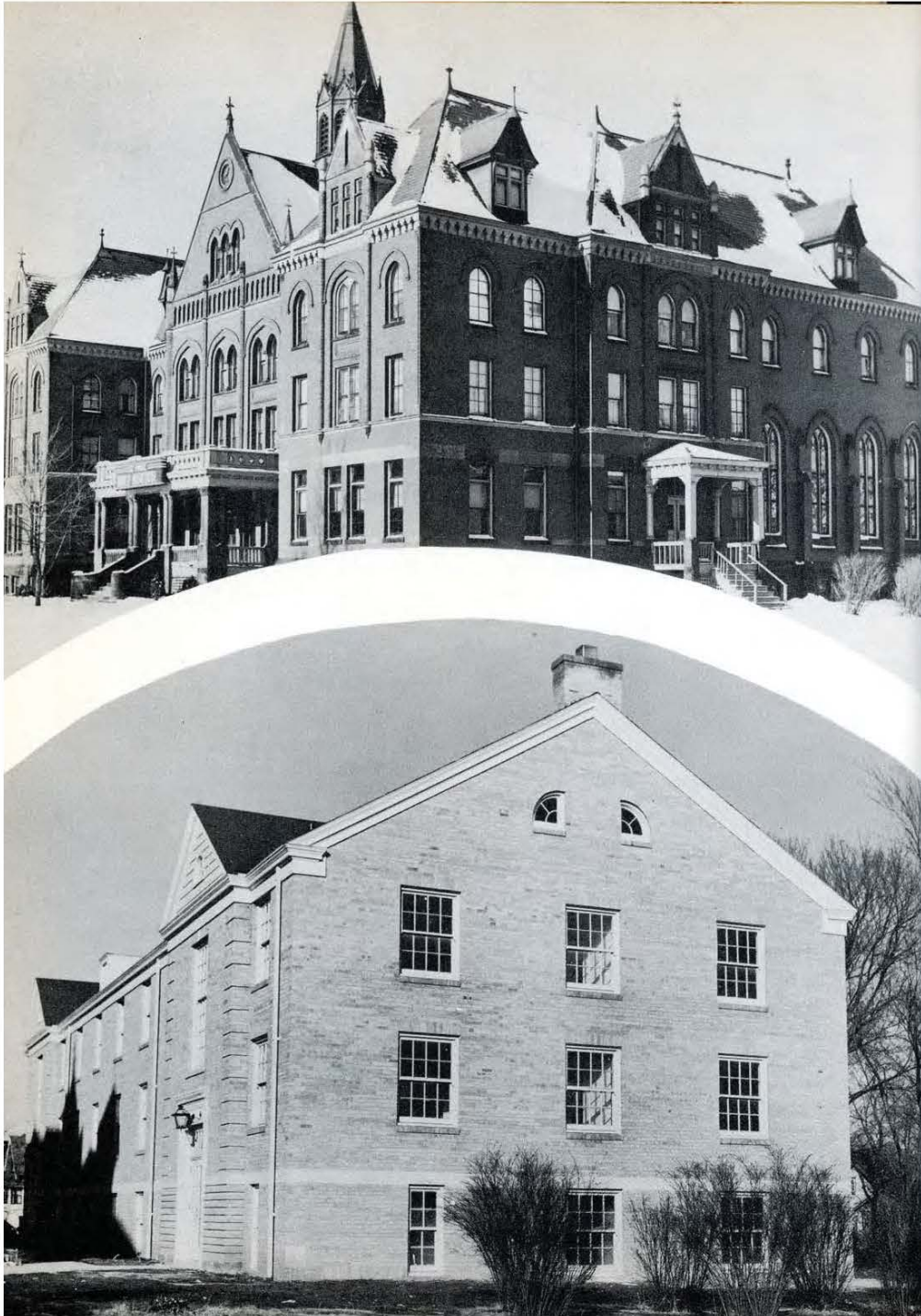


The present residence of the St. Paul Bible Institute—1361 Capitol Avenue (now Englewood Avenue).

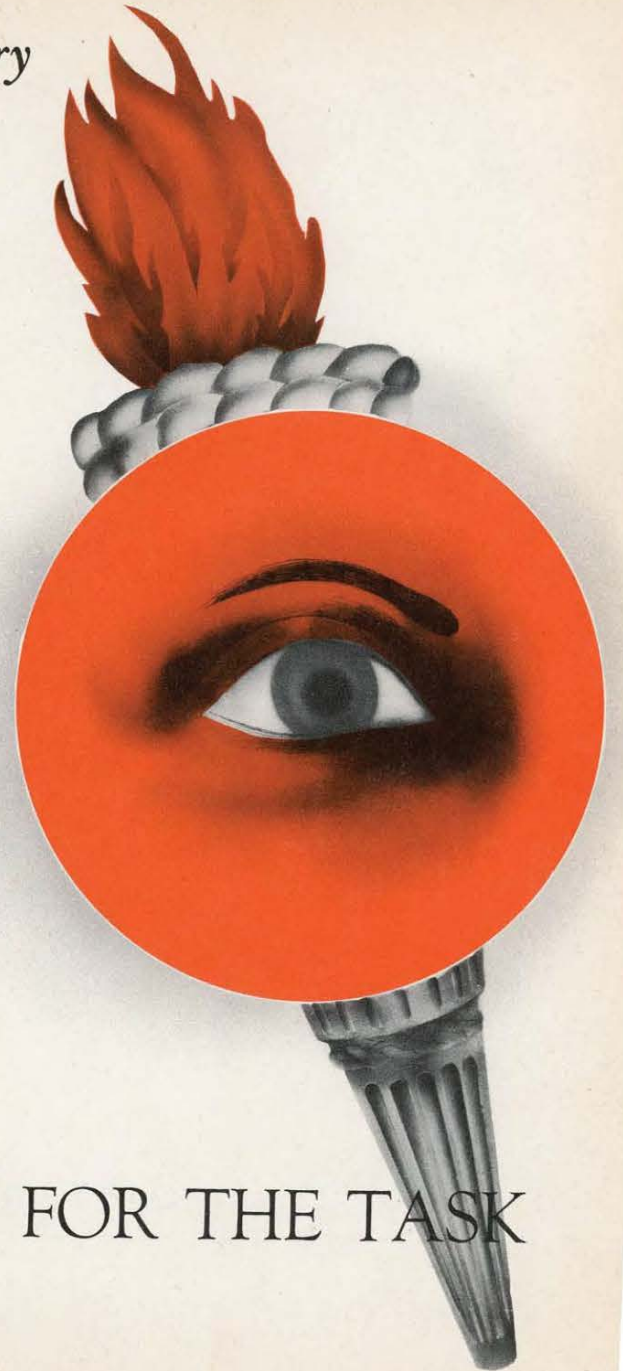
west with the Blessed Story of Salvation. The year 1946 saw our servicemen returning with a clear vision of the task that the Lord has given them to do. The year 1946 saw prayers answered and saw, on April 24, the first spadeful of earth upturned as the first step in the building of our new dormitory. The year 1946 saw our beloved school with a peak enrollment of 314 students, all desiring to know Him in His fullness and His power, so that they might tell others of His love. The year 1946 saw the beginning of our Christian Service Department with Rev. G. A. French as Director. The year 1946 saw the real beginning of a Ladies' Choir under the direction of Miss Lucile Maxwell, Instructor in Music. The year 1946 saw the addition to our faculty of Mrs. A. B. Raines to fill the position of Dean of Women left vacant by Miss Cora Schultz, and Rev. S. R. Richardson as Registrar and Instructor in Bible and Theology, and Rev. J. C. Wenninger as Instructor in the Humanities.

The year 1946 led us into the year 1947 and led us to January 6 when another milestone was passed. The men who had lived in the "attic barracks" since last September began to move into their new private rooms. On the same day the new kitchen and dining room, seating between 250 and 300, swung into operation.

This miracle building alone would be enough to make our Thirtieth Anniversary an outstanding event. God has been gracious in doing more than we could ask or think. It has been thirty years of constant growth both materially and, more important, spiritually. The year 1946-47 has been a year of untold blessing. We have a beautiful new dormitory, a new lounge, a new dining room — the Lord has been good! But above all these material things there is something far more vital — He has given us a new VISION of those that are lost without Him. Thanks be unto God!



30th Anniversary



VISION FOR THE TASK



D. J. KENYON
Dean of Men — Instructor



RUTH JONES
English Instructor



STANTON W.
RICHARDSON
Registrar and Instructor



H. L. TURNER
Director Department of Bible
and Theology — Instructor

J. MERRILL TANNEHILL
Director School of Music



MAXINE TANNEHILL
Instructor, Instruments



GEORGE D. STROHM
President — Dean

OUR FACULTY

LUCILLE MAXWELL
Instructor, Voice and Theory

THEODORE BERGMAN
Director Department of
Piano and Organ



GEORGE A. FRENCH
Director Department of
Christian Service



CHARLES H. SHAW
Business Manager
and Treasurer



J. C. WENNINGER
Instructor,
Christian Education



DAVID R. ANDERSON
Instructor, Homiletics

Seldom is a more varied group of personalities so closely knitted into the bonds of school life than is the faculty this year. Helpful and cooperative, with friendship unfeigned, they are always eager to help a student along the way spiritually or scholastically. In short, their VISION is one with Christ, their TASK to prepare people for prepared places.



ETHEL KILLGROVE
Student Instructor

HARRY TURNER, JR.
Instructor, Violin

ARLENE SWANSON
Student Instructor

HAROLD BRUNDIN
Instructor, Voice

CHARLES O. SELVIG
Instructor, Piano

ERNEST DAVIS
Instructor, Physical Education





A model of gracious Christian womanhood is Mrs. Addie B. Raines, our new Dean of Women. In her official capacity she is an example of unpretentious proficiency. Part of her personal charm lies in her engaging personality.

One outstanding quality for which she will always be remembered by the young women of S. P. B. I. is her sympathetic and fervent concern for the spiritual welfare of every girl under her supervision.

DEANS

A paragon of immaculateness is Rev. Don J. Kenyon, our Dean of Men. In his official capacity he is a model of casual efficiency. Part of his personal charm lies in his quizzical grin.

One outstanding quality for which he will always be remembered by the men of S. P. B. I. is his ability to thoroughly understand every given situation and offer the needed counsel and guidance.



SCHOOL NURSES

Evelyn Patz
Irell Roesler
Lou Rabun

LIBRARIAN

Mary Meyers



BUILDING SUPERVISOR
Rev. Ira Root

SCHOOL STAFF

Mrs. Edna Teeter
Lydia Petrak
Mr. Charles H. Shaw
Margaret Waldin
Yvonne Heiden
Nell Rose Doyle
Ethel A. Street



COOKS
Gladys Quaderer
Viola Peterson



EXECUTIVE COMMITTEE AND SCHOOL BOARD

REV. COLVER J. MASON
District Superintendent of the
Northwestern District

From the time of Moses, all down through the ages, the world has demanded leadership. Any state, any organization, any society needs guidance of the highest caliber. Our own Northwestern District is no exception. Hence we pay tribute to the stalwart men of our Executive Committee.

Rev. J. A. Peterson

Rev. G. D. Strohm

★ Rev. M. R. Thompson

Rev. P. F. Waller

Rev. J. H. Woodward

Rev. C. J. Mason

Rev. G. E. Meyer

Rev. L. W. Pippert

Rev. Howard Batdorf

Rev. G. A. French

Rev. Melvin Hall

Rev. L. A. Perkins

Rev. C. J. Mason

Rev. G. D. Strohm

Rev. V. R. Edman

Rev. Bernard King

Rev. J. A. Schmidt

Rev. L. A. Thompson

Rev. C. D. Tieszen

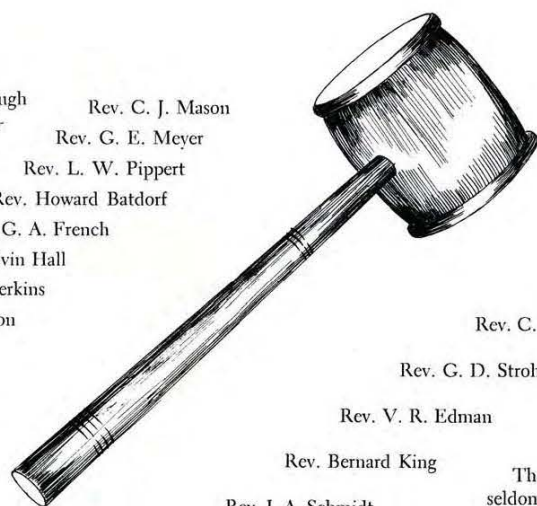
Rev. H. P. Voth

Mr. Robert S. Brown

Rev. Cecil R. Thomas

Rev. A. W. Tozer

Rev. Ralph T. Kyle



Though seldom expressed in words, the labors and accomplishments of the School Board do not go unnoticed. These twelve men, who sit twice a year behind closed doors, in lengthy sessions, are responsible for the progressive opportunities presented to us. It is their desire that we have every possible encouragement in the deepening of our Christian life, in the pursuing of knowledge, and in the strengthening of character. Thus, with these men who are actuated by ideals and plans for the betterment of student and school alike we associate a deep feeling of thankfulness.

30th Anniversary



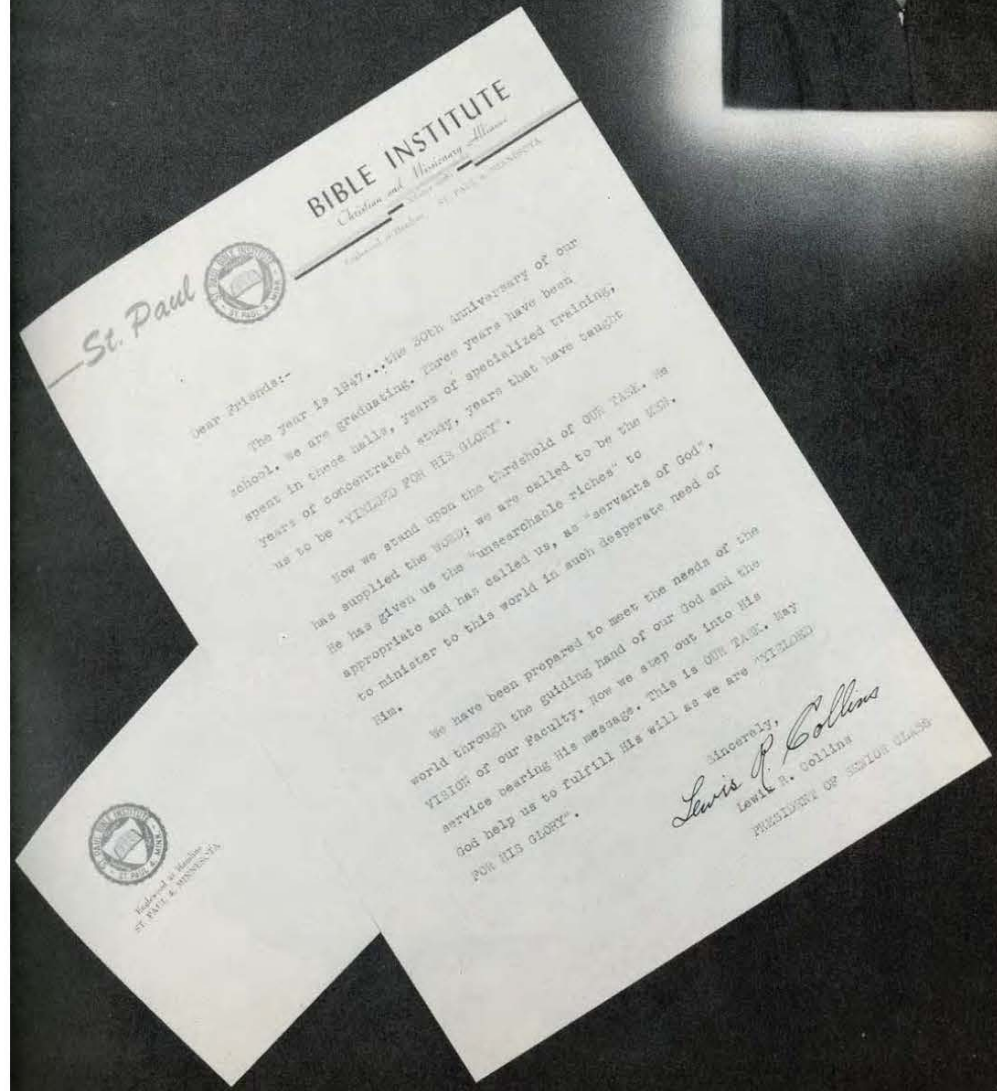
MEN FOR THE TASK



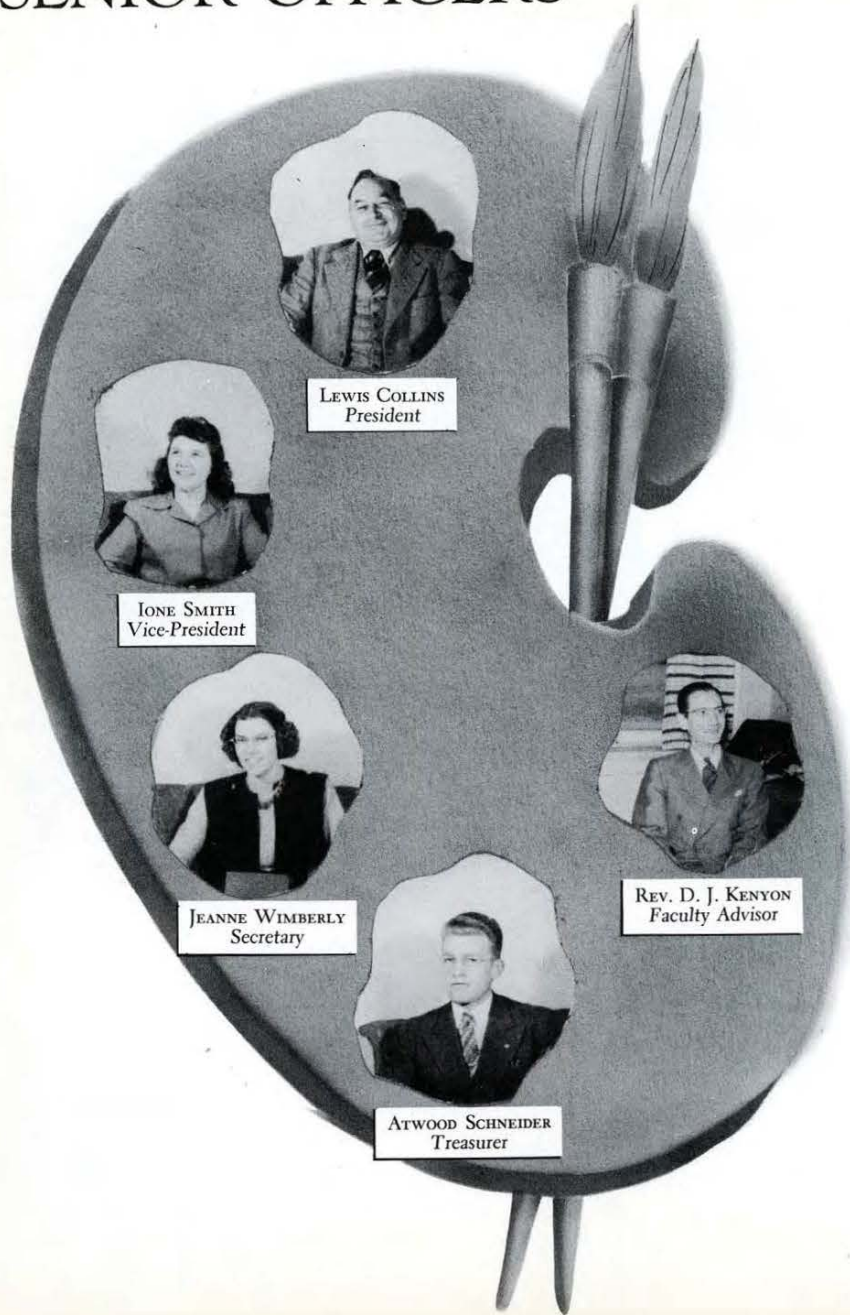
BOOKS AND STUDENTS - STUDYING?

"Merwin, don't you know you are not supposed to talk in the library? And Jim Thompson, I didn't know you could read upside down. Don't take those glasses off Maurice! You might be able to read that way. Are you awake, Betty? Betty! — I say are you awake? Who is the letter from, Ruth? Are there any pictures in that book, Lembke? Dick, how many words did you write on that theme? ... 11,247½? May I borrow that book when you are finished, Roy? Say George! haven't you got that volume memorized yet? If you are looking for "Power From on High" Mary, you won't find it ... I still have it."

SENIORS



SENIOR OFFICERS



SENIOR CLASS





ALEXANDER, LAUREL
Indianola, Iowa

Happy ... talkative ... on the dish-washing crew ... from the state of tall corn ... humble ... friendly ... spiritual ... thoughtful ... missionary minded ... impetuous ... always sharing the burden of someone else.



ANDERSON, GEORGE
Wright, Minnesota

Quiet ... spiritually stable ... unselfish ... timid ... a prayer intercessor ... always thoughtful toward others ... tender ... laborer for the Master ... fervent soul winner ... on his way to Africa.

ANDREEN, ELAINE
Superior, Wisconsin

Nimble fingers that tickle the ivories ... soprano soloist ... has an interesting laugh ... neat and prim ... gay ... friendly to all ... has a mind of her own ... unlimited spiritual depths.



BRYANT, ELLA MAE
Orchard, Iowa

Pleasant ... witty with a keen sense of humor ... artistic ... earnest ... competent ... children love her ... she has a burdened heart heart for Africa.



CAIN, MIRIAM
Amery, Wisconsin

In the greatest of trials and tasks, remains calm ... efficient ... one most likely to succeed ... sweet ... Missionary Society Curator ... quiet ... devoted Christian.



CLOCKSIN, GERALDINE
Plevna, Montana

Industrious worker ... small, but Oh! My! ... quiet ... changeable ... easy going ... wants Christ first in her life ... friendly but a bit reserved.





DIEHL, GORDON
Edmonton, Alberta,
Canada

The mighty Canadian ...
an able speaker ... song
leader ... soloist ... Choral
Club ... ex-Navyman in the
"Service of the King" ...
witty ... eh?



FRENCH, LUCILE
Danbury, Wisconsin

Quiet and very efficient ...
always a warm smile ...
studious and business-like
... excellent on committees
... always shy until friend-
ship has been established.

GANGWISH, FAUNA FAY
Gibbon, Nebraska

A refreshing and winning
personality ... lovable ...
helpful ... true ... kitchen
assistant ... ambitious ...
organist and pianist ...
trusting God to work out
His will for her life.



GAPP, EUGENE
Stockholm, South Dakota

Cheerful chap ... industri-
ous ... friendly kitchen
helper ... Zaccheus (a little
fellow) ... Choral Club
singer ... spiritual prayer
giant ... dependable ... a
genuine spiritual leader.



GORDON, MERWIN
Oakland, California

Always has a good time ...
poker-faced entertainer ...
fiery debater ... a real theo-
logian ... keen mind ...
deep spiritually ... a soul
winner ... all out for Christ.

GREINERT, BERNICE
Greenville, Wisconsin

Laughing ... pleasant smile
... good student ... quiet
cooperative ... steady and
constant ... practical ...
lover of children's work ...
serious for Him ... desires
His best.





HABAS, LORAYNE
Little Falls, Minnesota

A busy working girl . . .
makes every minute count
. . . tiny but mighty . . . de-
termined . . . patient . . .
cheerful . . . lively . . . true-
hearted . . . on her toes spir-
itually.

HARDY, CLAUDIA (MRS.)
St. Paul, Minnesota

Brilliant . . . capable . . . ef-
ficient pastor's wife . . . ac-
complished saxophonist . . .
Choral Club . . . young peo-
ple's leader . . . "A" student
. . . versatile and thoughtful
. . . talented and consecrated.

HARRIS, NORMA
Oklahoma City, Oklahoma

Taciturn . . . exacting . . . in-
terested in Home Missions
. . . helps in laundry . . . neat
. . . self-reliant . . . shy . . .
has a mind of her own . . .
devout Christian.



HAWLEY, ADELIZA (MRS.)
McAllen, Texas

Friendly . . . humble . . .
deep as the ocean spiritual-
ly . . . a loving mother . . .
earnest and sincere in her
praying . . . loves her Bible
. . . concerned for others.



HUSTAD, ELIZABETH
St. Paul, Minnesota

A scholar . . . cheerful . . .
loving . . . Choral Club sing-
er . . . rejoices in her Savior
. . . a worker with children
. . . one of our "soon to be
married" girls . . . diligent
and alert in soul winning.

INGWERTSON, DOROTHY
Lincoln, Nebraska

"Miss Information" . . . effi-
cient . . . witty . . . likeable
. . . trickster . . . sincere and
conscientious . . . lives whol-
ly for the Lord . . . loves fel-
lowmen and their souls . . .
Missionary Society Vice-
President.





JOHNSON, ARLES
Delano, Minnesota

A heart of gold ... sincere and true ... jolly ... energetic ... a good sport ... serious for the Lord ... gives her best for Him ... faithful band member.

KILLGROVE, ETHEL
Chicago, Illinois

Conversant and intellectual ... teacher ... Child Evangelism ... interested especially in Mexican children ... a spiritual leader and always busy for her Lord ... soon to be on her way to Arabia.

KJELLMAN, EUNICE
Glasgow, Montana

Timid ... plenty of common sense ... quiet but intelligent ... practical ... amiable ... possesses a lively sense of humor ... desires to follow the Lord with her whole heart



KRUPSKY, ELEANOR
Butte, North Dakota

Shy ... reserved ... diligent ... conscientious ... loving ... likes to reminisce ... appreciates the finer things ... beaming smile ... fervent in prayer ... lives close to the Lord.



LARSON, GERTRUDE
Des Plaines, Illinois

Thoughtful and happy ... consistent ... Choral Club ... owns a "golden" cornet ... and Gunny (quote — wonderful — unquote) ... another engaged girl ... member of South American Prayer Band.

LEIGH, VADA
Monticello, Minnesota

Happy ... energetic ... generous ... willing to help ... progressing in the Lord ... sincerely serving Him ... zealous for souls ... a missionary heart ... Choral Club and Band.





MALONE, MYRON
Amberg, Wisconsin

Has a sense of humor ... lots of fun ... man of his word ... friendly ... humble spiritual leader ... earnest in seeking God ... spiritually sensitive ... on fire for the Lord.



McCRIMMON, LILLIAN
Atlanta, Georgia

Influential ... spiritually minded ... well-liked ... a patient worker ... deliberate in everything ... "Georgia" has that accent ... cheery personality that always wins ... a friend.

MITTELSTAEDT, DELILA
Glendive, Montana

Energetic ... willing to help anyone ... fast talker ... moves quickly ... trustworthy ... dependable ... does not waste much time ... lives every moment to the fullest ... trusts Him completely.



MUELLER, PHYLLIS
Seymour, Wisconsin

Smiling and sweet ... naturally curly hair ... always ready for a joke ... eager about lessons ... desires God's best ... faithful member of the Tract Society



PULLMAN, ESTHER
Huron, South Dakota

A sincere, meek-spirited student ... trustworthy ... helpful ... friendly ... reserved ... neat in word and deed ... has intelligently consecrated her life.



RATHJEN, ELAINE
Janesville, Wisconsin

Talented pianist ... quiet?? ... emphatic ... amiable ... rosy-cheeked ... radiant smile ... willing to help others ... Gene's true love ... capable ... conscientious scholar.





SCHNEIDER, ATWOOD
Remer, Minnesota

Good hearted ... U. S. Navy ... automatic smile that spells friendship ... a true man of God ... a stalwart who cannot be swayed ... Choral Club ... Treasurer of Senior Class ... will do anything to help a friend.



SHEFFIELD, HELEN
Covington, Kentucky

Missionary minded ... devout ... quiet ... successful ... talented ... prayer warrior ... serious little one ... chapel organist ... Choral Club member ... China-bound ... a blessing to all.

SKELLIE, LLOYD
Kingsburg, California

Rugged Ex-GI ... the "Army of the Lord" ... sly sense of humor ... continually blushing ... spiritually minded ... full of the joy of the Lord ... genuine ... an asset to any class (especially Principles of Missions) ... bound for Philippine Islands.



SMITH, IONE
Aberdeen, South Dakota

Progressive ... helpful ... capable ... sensible and jolly ... ping-pong enthusiast ... agreeable ... will always hear your troubles ... Vice-President of Senior class and a real asset ... helps make Dorm life interesting ... faithful in prayer.



STOESZ, RUTH
Butterfield, Minnesota

Happy, true ... loves the Lord ... full of pep ... a dull moment? what's that? ... Choral Club ... Missionary-to-be ... horseback riding, boating — anything out-of-doors ... is worth a great Diehl (oops — we mean Deal).

SUNDEEN, RUTH
Lincoln, Nebraska

Sweet and sincere in her own quiet way ... reserved and very thoughtful ... sympathetic to all ... trusts God for her guidance ... reflects His love ... Missionary Society ... conscientious student.





TAYLOR, DORIS
Randolph, Minnesota,

Pretty as a picture ... neat
as a pin ... short ... shy(?)
and sweet ... quizzical smile
... mischievous quietness
... faithful in devotions ...
dark-eyes ... studious.

TURNER, HELEN
St. Paul, Minnesota

Tireless ... laughing eyes ...
effectual conversationalist
... persuasive ... chic ...
energetic for the Lord ...
sings His praises ... Shield
Editor ... Choral Club.

WANG, MARCELLA
Mason City, Iowa

Faithful Christian character
... sincere in everything she
does ... kind ... conscientious ...
tender and gentle
... devoted to her Master's
work and will ... prayerful.



WARREN, ODIS
Fair Oaks, Arkansas

Cautious ... sincere ... a
spiritual helper ... concerned
about a children's or-
phanage for the Ozarks ...
a hard worker both as me-
chanic and scholar ... con-
servative.



WILKES, VERNA
Fort Smith, Arkansas

Sweet disposition ... quiet
... thoughtful ... knows
the answers ... serious ...
Home Missions Prayer Band
... burdened for lost souls
... loves the Lord ... in-
spires others.

WIMBERLY, JEANNE
Omaha, Nebraska

"Good evening, St. Paul Bi-
ble Institute" ... tall, dark
and dependable ... easy go-
ing ... courteous ... future
missionary ... faithful to
God and His Word ... con-
sistent in everything.

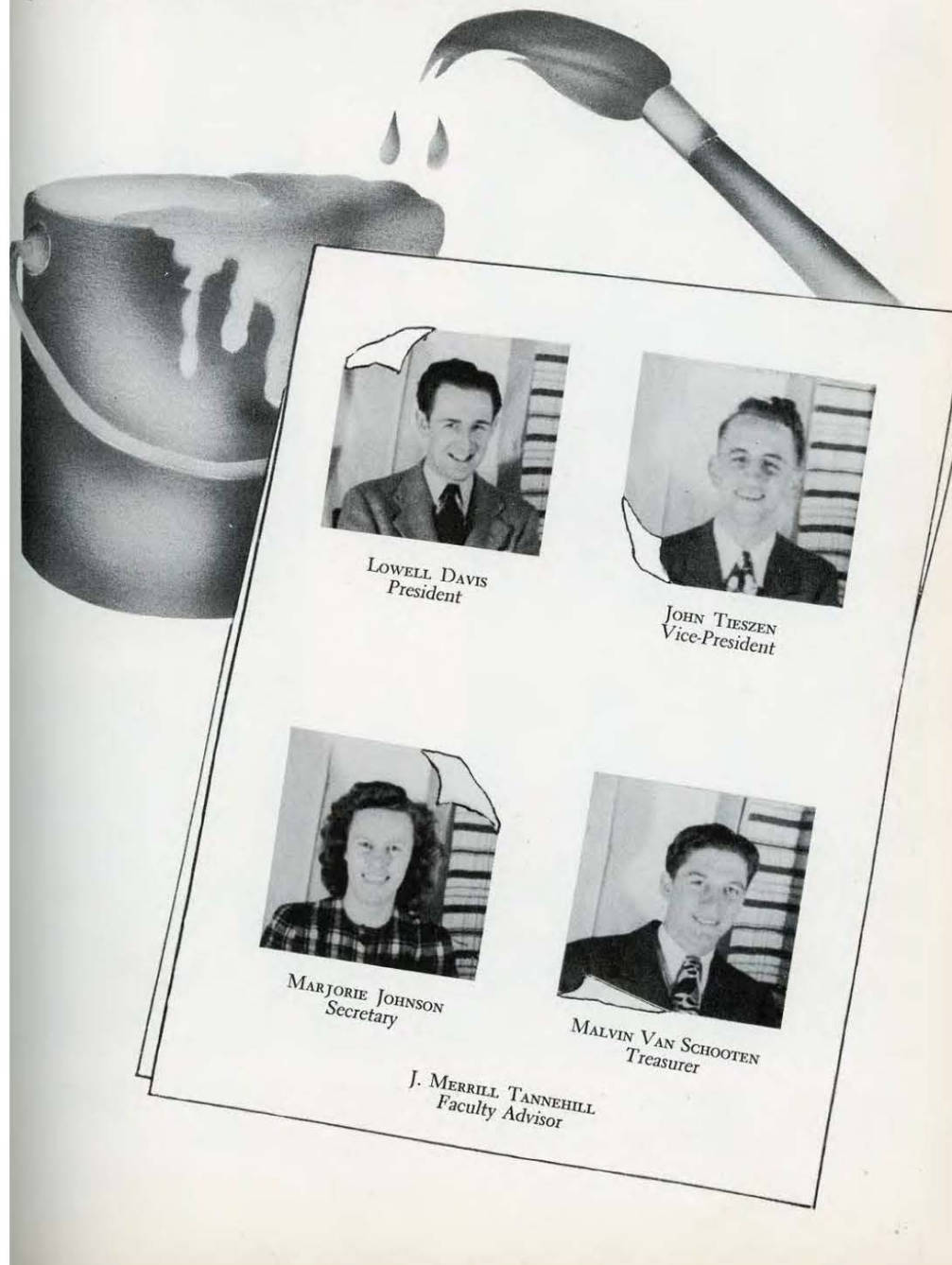


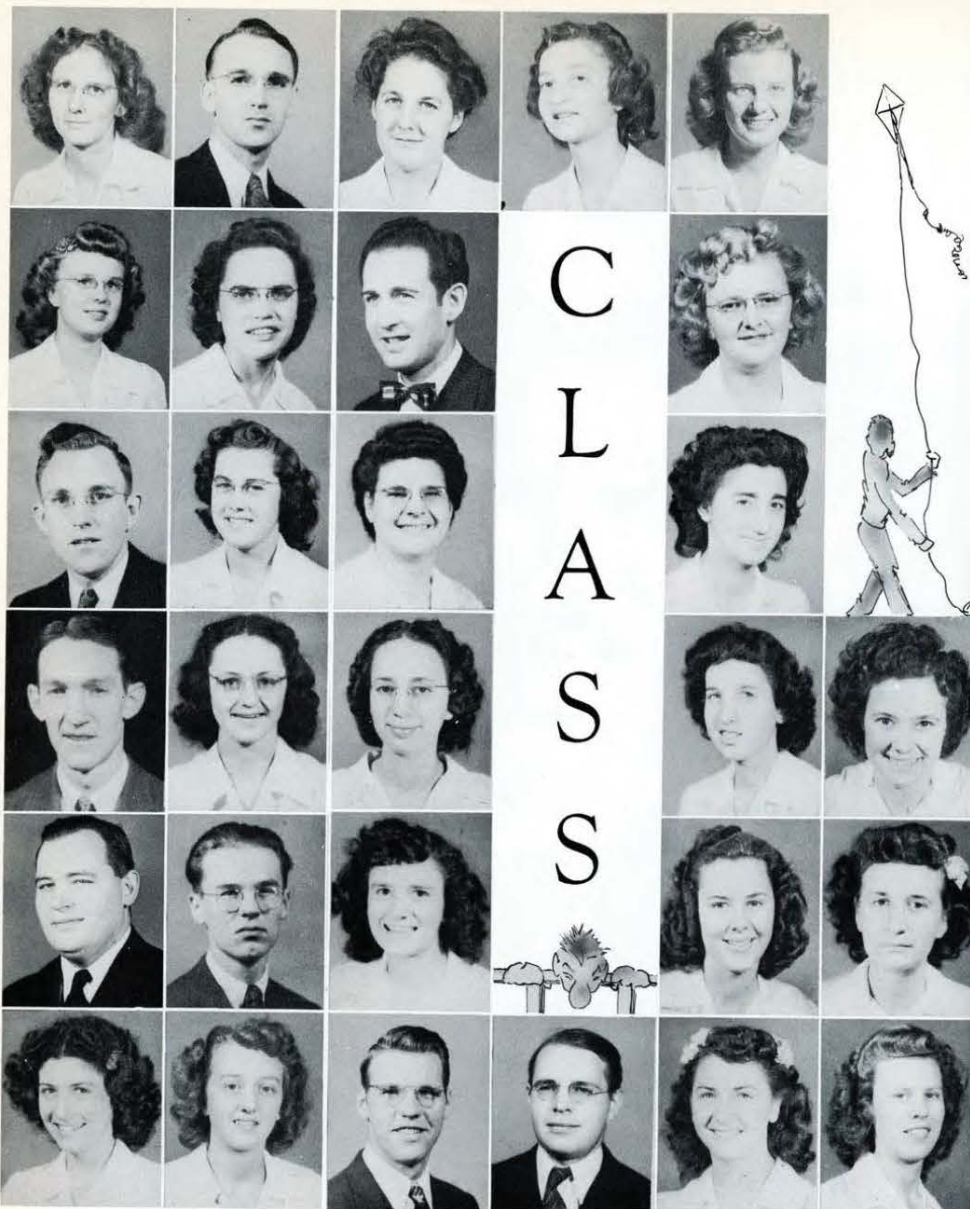
SENIOR



SCRAMBLE

JUNIOR OFFICERS





Anderson, Lorraine
Askeroot, Lorraine
Baldwin, Eldon
Barrett, Roy
Barrie, Gordon
Becker, Faith

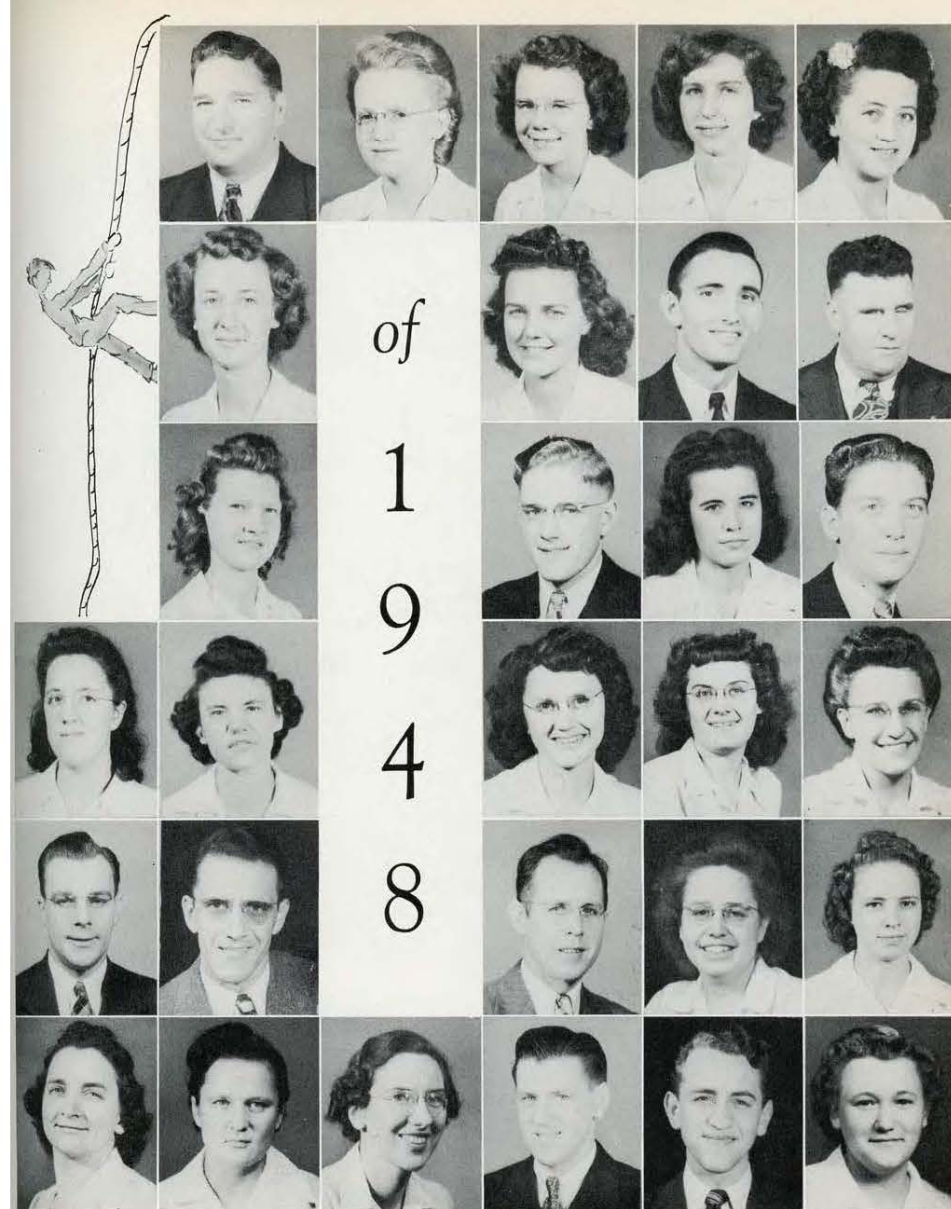
Becker, John
Blomquist, Jeanette
Brandt, Elaine
Bredt, Pauline
Caley, Henry
Clegg, Maries

Dague, Ruth
Davis, Lowell
Deaton, Reva
Driver, Arlene
Eames, Doris
Eckdahl, Carl

Eisert, Donna
Engel, Ralph

Erickson, Alice
Estrin, Pearl
Eumurian, Eva
Guyor, Helen
Herman, Carol
Holmgren, Ruth

Hurd, Beverly
Irvine, Irene
Johnson, Marjorie



Johnston, Helen
Kratzer, Glen
Kueck, Hazel

Lien, Arne
Mapstone, Hazel
Martin, Phyllis
Mentlak, Jeanette
Noli, Harry
Norman, Gladys

Oellerman, Dorothy
Parnham, Laura

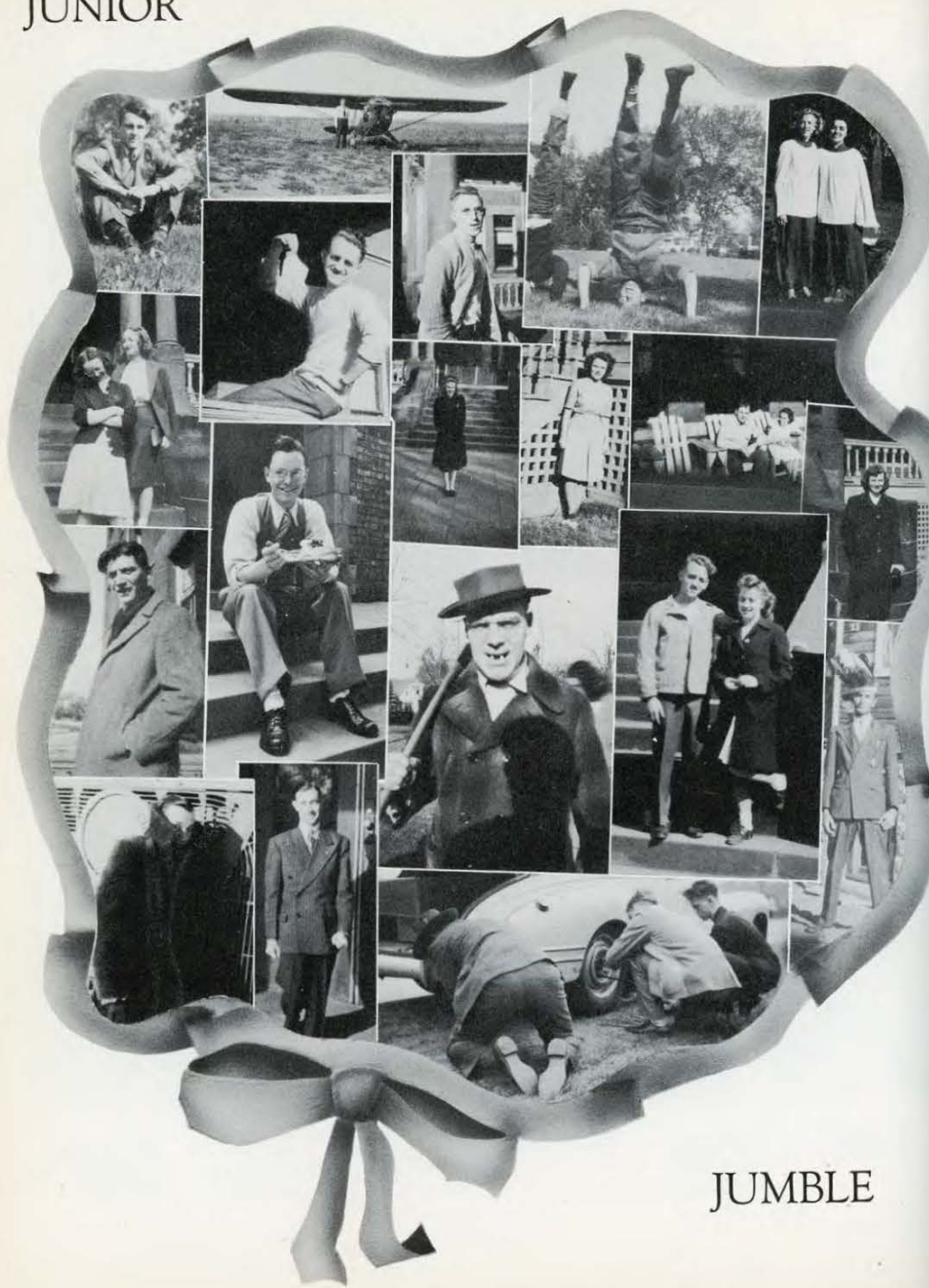
Peterson, Harriet
Peterson, Olive
Rostad, Douglas
Senseney, Mariam
Shodin, Ray
Sigl, Harold

Steen, Ruth
Stewart, William
Strohm, Ruth
Swanson, Arlene
Taynor, Martha
Tieszen, John

Tieszen, Leona
Tufts, Donald
Van Schooten, Malvin
White, Mildred
Winter, Marjorie
Wolters, Wylna

NOT PICTURED—
Stephen Hoksina
David Hutchinson
Claire Mazurek
Mary Townsend

JUNIOR



JUMBLE

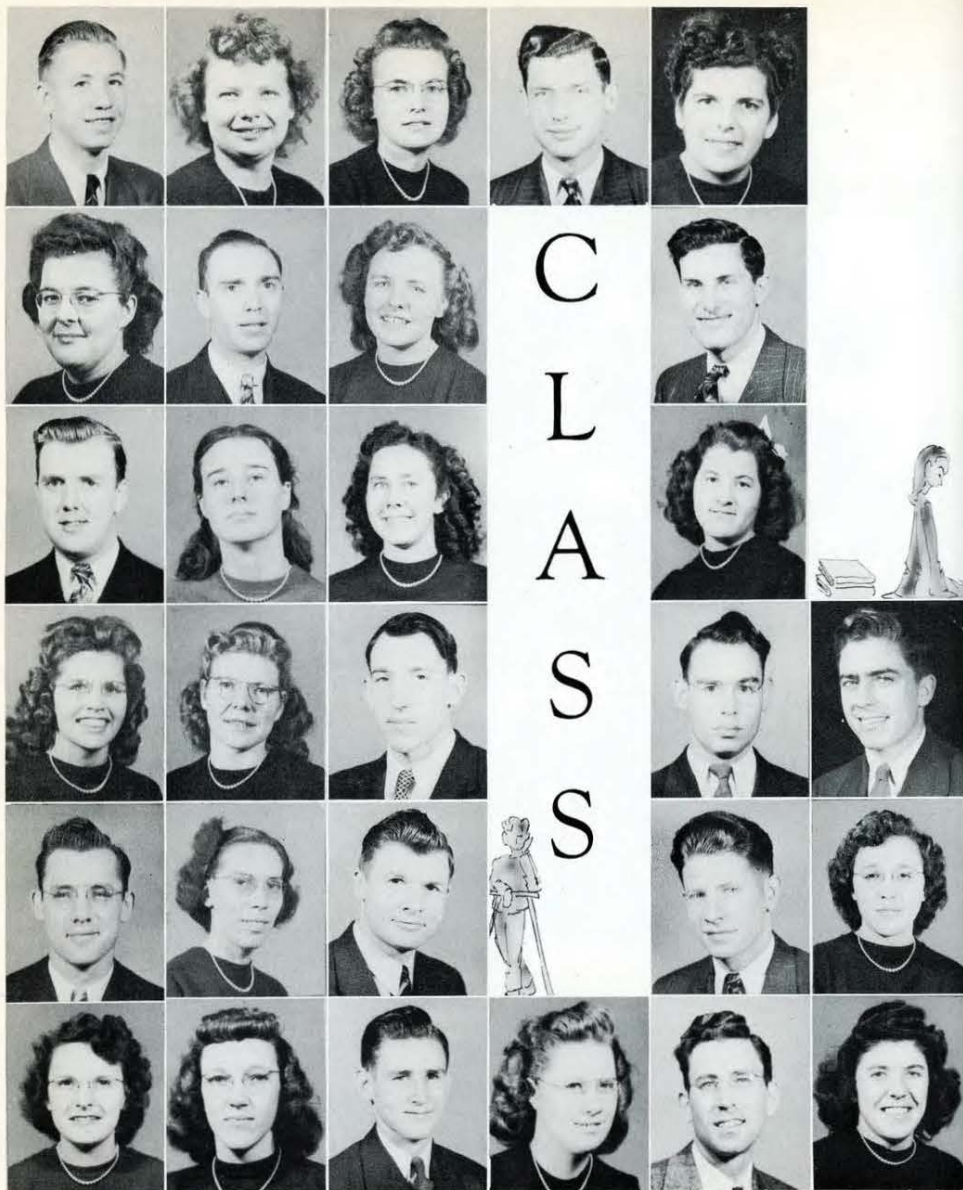
FRESHMEN



FRESHMAN OFFICERS

LLOYD VAN STONE President
 MARGARET JOHNSTON Vice-President
 ANNE SCHMID Secretary
 MARVIN CARR Treasurer

REV. G. A. FRENCH Faculty Advisor



Amstutz, John
Anson, Geraldine
Arneberg, Gordon
Baldwin, Maxine
Bergen, Edwin
Becker, Marie

Berger, Marlynn
Bixler, Ephraim
Caley, Rhelinda
Carnaak, Ruth
Cellar, Josephine
Christenson, Lois

Clintsman, Marie
Coates, Patricia
Copeland, Betty
David, Roy
DeArmedy, Max
Denelsbeck, Lyle

Dick, Roland
Driemeyer, Ione

Duckworth, Doris
Eames, Wayne
Eldred, Opal
Emmel, Cecil
Esau, Daniel
Ewert, John

Fenderson, Willard
Flanders, Velda
Floyd, Ruth



Foster, Dorothy
French, Flavel
Fradenburg, Darlene

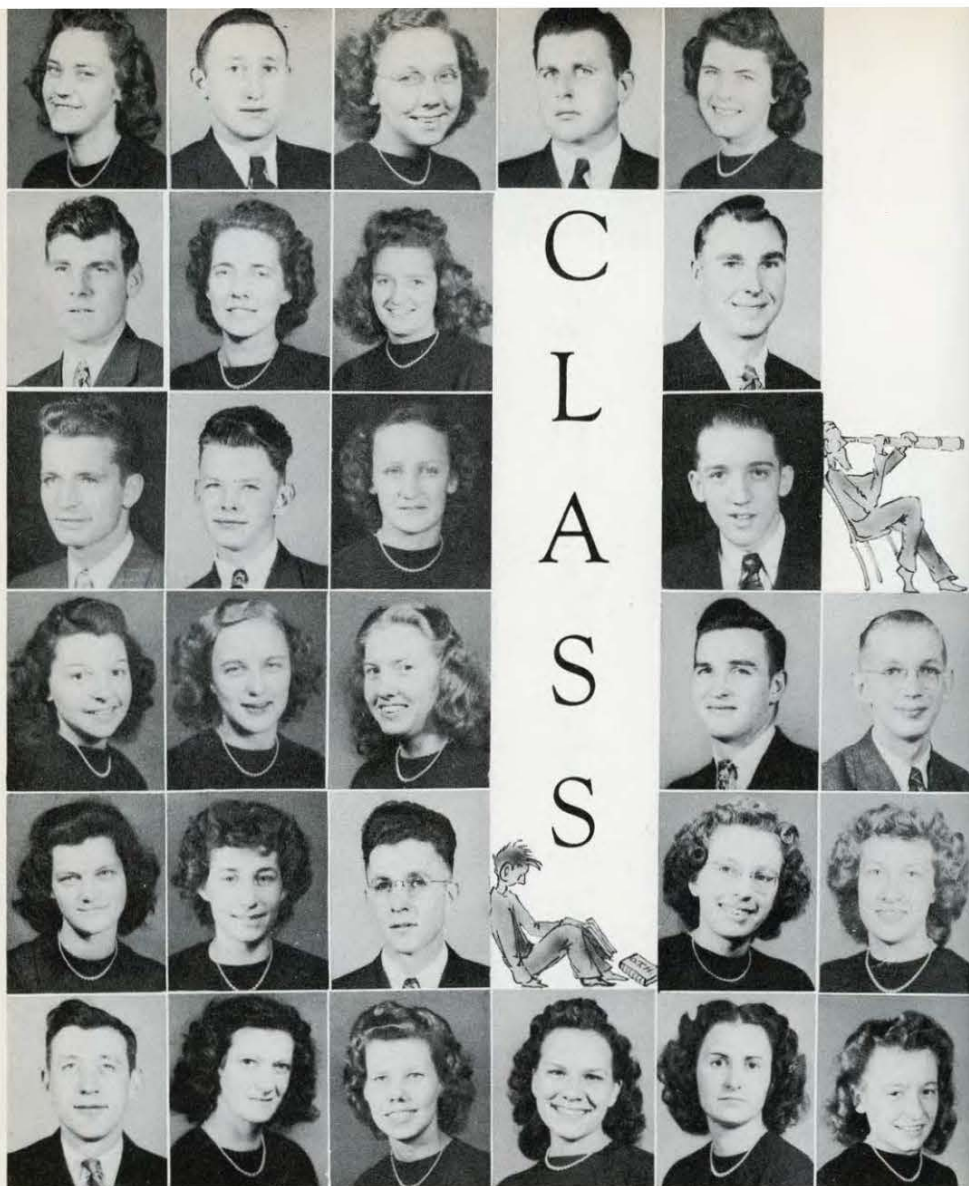
Gronvall, Karl
Haar, Milton
Hannam, Alice
Harding, Arlene
Heir, Donald
Holmes, DeLos

Holmgren, Lowell
Holt, Phil

Holtby, Marilyn
Jacobson, Jacob
Johnsen, Merlyn
Johnsen, Shirley
Johnson, Carl
Johnson, Silas

Johnston, Margaret
Jones, Eugene
Jones, Thomas
Kurtz, Robert
Landon, David
Langmade, Gordon

Lee, Lois
Leeder, Leo
Lemboke, Byron
Lemke, William
Lesley, Clifton
Linsley, Elaine



Malm, Rosabel
Mapstone, Willet
Mulholland, Dennis
Mumma, Bonnie
Munson, Darlene
Myers, Wesley

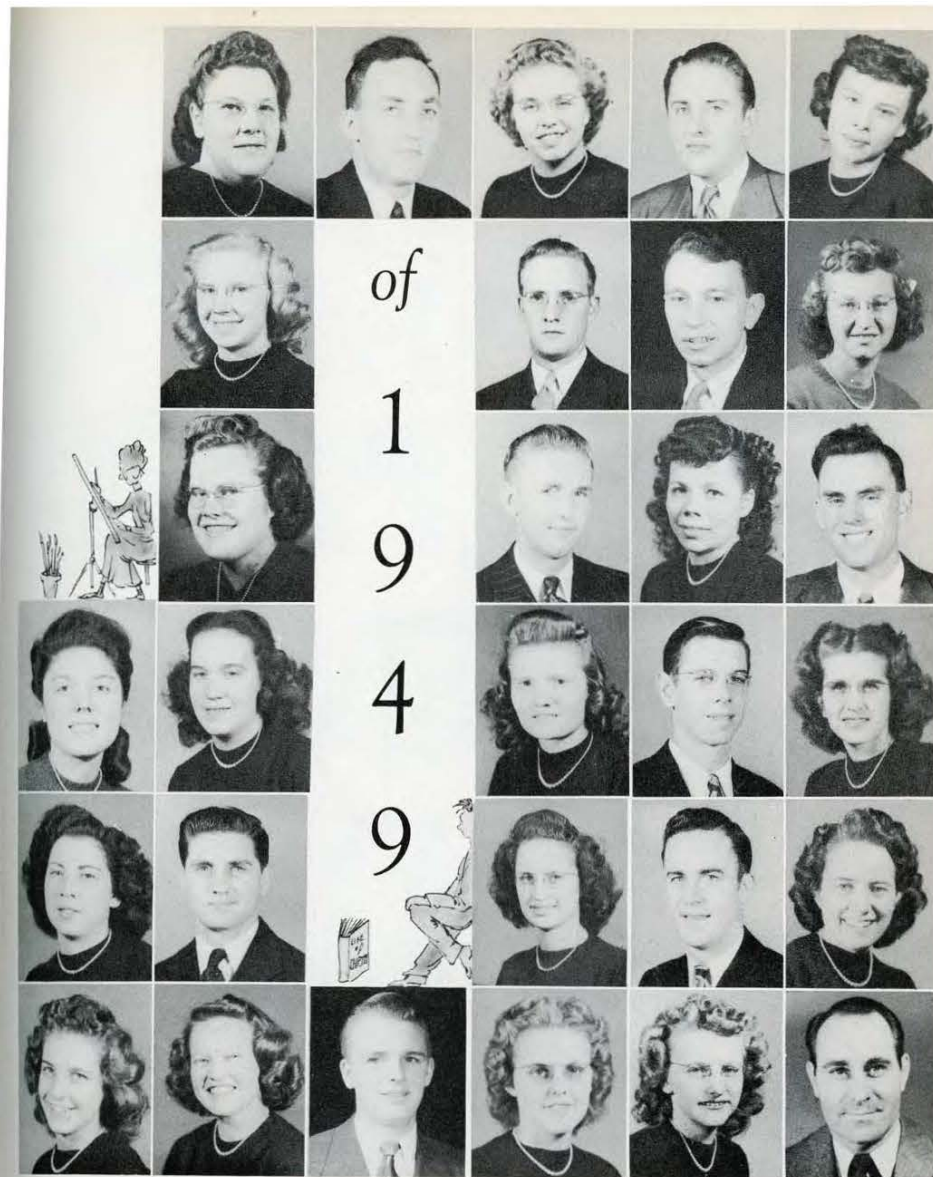
Nickel, Melvin
Oberg, Ruby
Olson, Ronald
Overton, Donnie
Patz, Evelyn
Payne, Georgianna

Pearson, June
Peterson, Betty
Pierce, Shirley
Powell, Frank
Pust, Waldo
Rabun, Lou

Raebel, William
Rauch, Audrey

Reckling, Darlene
Reckling, Harlan
Rediger, Lloyd
Rexilius, Royce
Ritter, Eleanor
Roesler, Irel

Root, Roswell
Rusthoven, Janet
Rustman, Mildred



Schmid, Ann
Schumacher, Rose
Seagraves, Doris

Shaffer, Carolyn
Smith, Doris
Snyder, Elva
Stewart, Mary Helen
Stombaugh, Merle
Strombeck, June

Stroshine, Carroll
Sundeen, Marlin

Sydow, June
Thompson, George
Thompson, James
Tilman, Virde
Toews, Lucella
Torgrud, Norma

Ulander, Vern
Ullman, Gunther
Van Dyke, Elaine
Van Schooten, Herman
Van Stone, Lloyd
Voth, Florence

Waller, Avis
Wallin, Ruth
Widholm, Robert
Widman, Elsie
Wobbema, Clarice
Yeats, Ralph

SACRED SCHOOL of MUSIC



Hoffman, Gertrude
Johnson, Ruth
Mulholland, Dennis
Swanson, Shirley

Vander Ploeg, Eileen
Whitehouse, Belva

JUNIORS
Kindgren, Janet
Logerquist, Faye

Lee, Joan
McDonald, Betty
McIntyre, Frances
Madsen, Elaine
Strandberg, Donna

Wallace, Elizabeth
Wohlenhaus, Marjorie
Woods, Lenora

SOPHOMORES
Byers, Mary
Erickson, Doris

FRESHMEN
Binnington, Hilda
Bixler, Ann
Burkhardt, Charlotte
Groppe, Donald
Flegle, Richard
Kooz, Viola

SPECIAL STUDENTS



IMMER, MAXINE



HARRIS, VALERIE



DAVIS, MRS. PAUL
CLARK, WARD
BALTZER, ALVIN



RAEBEL, MRS. WILLIAM
SIGL, MRS. HAROLD
VARCE, MARJORIE



ZUMHINGST, BETTY
BAILEY, KEITH
CARR, MARVIN



COHEN, ROBERT
DAVIS, PAUL
DECKER, CLYDE



DIEMER, RICHARD

DEGREE STUDENTS



HARVEY, RICHARD



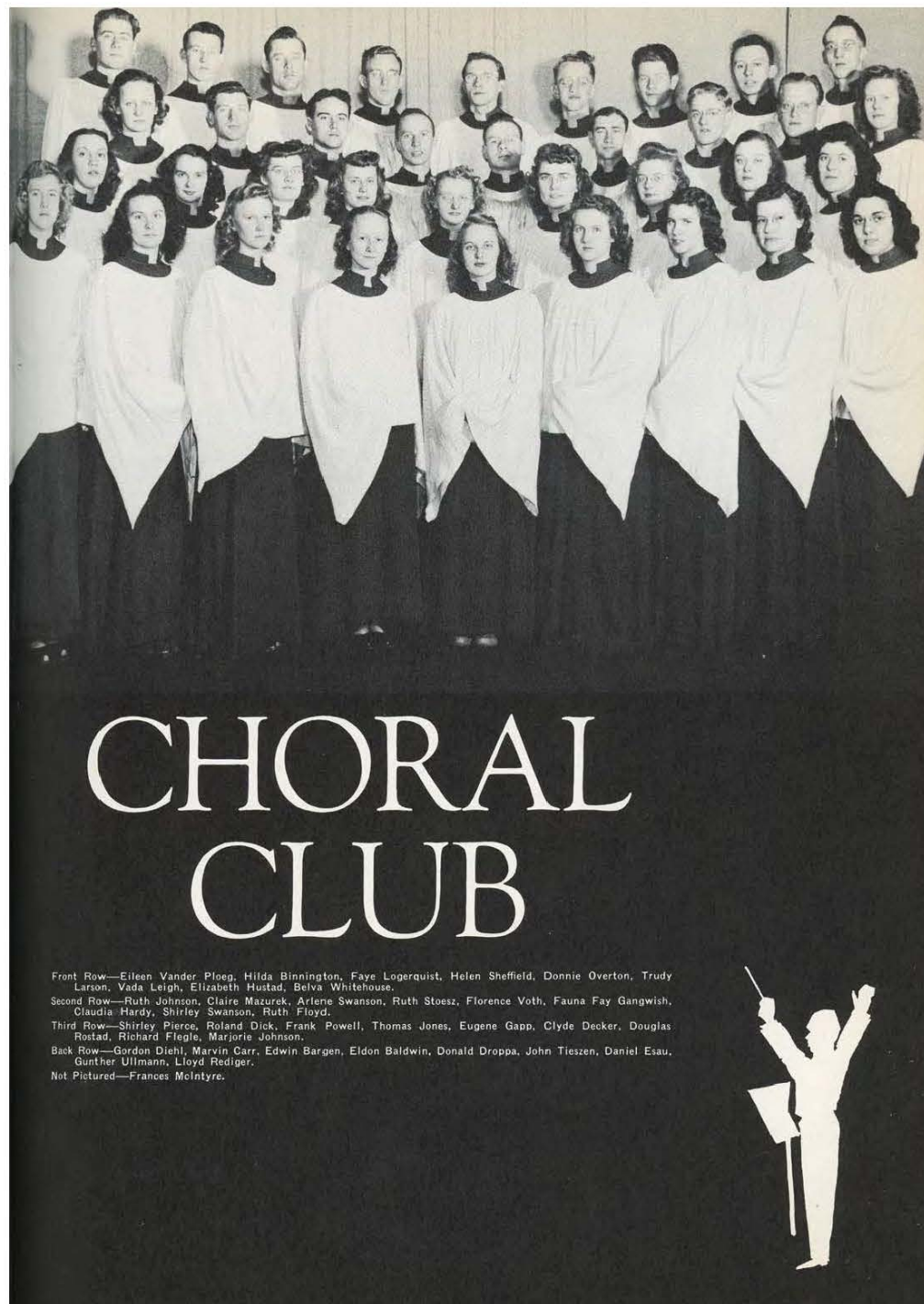
30th Anniversary



**CHALLENGE
OF THE TASK**



PROFESSOR J. MERRILL TANNEHILL
Director of S. P. B. I. Choral Club





CHORAL CLUB TOURS

"The fruit of the righteous is a tree of life; and he that winneth souls is wise." It is the deepest desire of these thirty-eight completely consecrated young people that their lives be used in the awakening of other young people to the realization of their need of a Saviour. They believe that God can use their lives, as they allow Him, to cause a mighty Holy Ghost revival to sweep America. Consequently hours and hours of precious moments are spent in prayer, making sure there is nothing between their souls and the Saviour. Each member feels it a personal responsibility to God and to his fellow club members that he keep himself "meet for the Master's use."

The Club is now in its tenth season. In concert tours a total of 100,000 miles has been traveled in singing the New Song of Salvation. This year tours will take the club into the Southwestern, Northern and Eastern states and on up into Eastern Canada. Concerts will be given in such cities as Pittsburgh, Chicago, Toledo, Omaha, Lincoln, Toronto, Milwaukee and Buffalo, covering a distance of some six thousand miles.

May we wish this talented and consecrated group God's anointing and may He reward every member with souls for His hire.



LADIES' CHORUS

First Row—Miss Maxwell (director), Elizabeth Wallace, Luella Toews, Carol Herman, Belva Jeanne Whitehouse, Charlotte Burkhardt, Ruth Wallin, Lenora Woods, Doris Erickson (accompanist).
Second Row—Betty Zumhingt, Mariam Senseney, Marilyn Berger, Clarice Wobbema, Anna Bixler, Pauline Breid, Doris Smith.
Third Row—Mary Helen Stewart, Viola Kooy, Irell Roessler, Lois Christensen, Shirley Johnsen, Janet Ruthoven, Norma Torgrud, Joan Lee.

TO INCREASE their knowledge of music and to be made a blessing to others is the purpose of the Ladies' Chorus. In both aspects the Chorus has been successful. Knowledge of music has been gained under the directing hand of our versatile Miss Lucille Maxwell; blessing has come as they have ministered around the Twin Cities area.

When the true meaning of the sacred music is understood, the interpretation of both leader and member is united into one theme; and when twenty-two selected voices are blended into one purpose — that of being made a blessing for His glory — people will be blessed.



BAND



First Row — R. Johnson, E. Vander-Ploeg, V. Leigh, S. Swanson, C. Hardy, D. Mittlestaedt, F. Gangwish.

Second Row—A. Johnson, F. Voht, G. Larson, A. Swanson, F. Logquist, B. Greinert, J. Blomquist.

Third Row—W. Fenderson, L. Askerooth, E. Baldwin, R. Holmgren, D. Rostad, D. Flegle, G. Payne, R. Dick, D. Droppa.

THE BAND is composed of a group of amateur musicians in the various stages of musical advancement. It is not organized simply for the entertainment of the student body, but rather for the enlargement of the band member's own musical capacity. It provides the practical experience of playing in voluntary co-operation with one another in a group.

It affords the inspiration which causes many a student to take up the study of such a necessary art through one or another of the various instruments.

CHRISTIAN SERVICE

LOST SOULS! The realization that men and women without Christ are eternally lost has been gripping the hearts and minds of the students until their energies have responded to the inward passion to win them for Christ.

The call has come from homes — homes for the aged, mission halls, hospitals, and churches. Every student has been given an opportunity to meet the challenge through organized tract distribution, street services, Child Evangelism and Sunday School classes, Youth For Christ, hospital visitation, chalk talks, singing, playing, testifying and preaching.

From September 19 to December 15, 1946, the students endeavored to fulfill the commission of Christ by distributing 62,333 tracts, praying with 578, and leading 413 to a definite profession of Christ. The work goes on.

The Christian Service Department has enjoyed the privilege of serving sixteen different denominations and twelve Gospel missions. Our goal is 10,000 tracts a week distributed, fifty souls a week won to Christ, and every student dominated by a passion for a lost world.



MANY hardened hearts of sinners have been won to the saving knowledge of our Saviour as the student body has faithfully presented the Word, both in song and in testimony, in twelve different missions in the Twin Cities area.

What beautiful music can come from the voices of young hearts when they know Him, whom to know aright is life eternal!

Mary Townsend, chalk talk artist, assisted by Donna Lee Strandberg at the piano and Hilda Binnington singing appropriate numbers, has made the way of life plain to Sunday Schools and young people's groups.

Students have been a means of great blessing as they have taken a song of hope and praise to hospitals and old people's homes.

The Tract Society has the big task of stamping and supplying 10,000 tracts for weekly distribution. Love service is provided each Friday afternoon by faithful student helpers. A committee of eight, led by Phyllis Mueller, directs the work of the society. Members of the committee pictured standing are: Malvin Van Schooten, Ruby Oberg, Lloyd Van Stone, Phyllis Mueller, Henry Caley, Carroll Strohshine. Members of the society not pictured are Ethel Killgrove and Mrs. Esther Raebel.

"Suffer little children to come unto Me, and forbid them not." Outstanding has been the work among children as more than 100 students have ministered weekly in Child Evangelism, Religious Instruction and Sunday School classes. Scores of children have accepted His invitation, and thus not only a soul, but also a life, has been saved for the Lord.

Mr. Harry Noll represents the student preachers. An average of fifteen future pastors minister weekly.



C H R I S T I A N S E R V I C E



SPORTS PARADE

COMPLAINTS are frequent concerning the lack of athletic enthusiasm at S. P. B. I., but actual observation shows that at least part of the student body is capable of throwing a ball or skating the figure eight.

In the fall of the school year the campus is crowded with baseball enthusiasts and if you are not careful you might lose that freckle off your nose as a ball whizzes by. Of course everyone turns out to watch a good baseball game, so on a warm afternoon the campus is spotted with interested students and the library is left vacant.

No matter how slowly it comes, winter is inevitable. Baseball, volleyball, swimming and horseback riding is all forgotten. Soon can be heard the familiar phrase, "Come on to basketball practice," and you know that another season has begun. One night a week is spent at the Ober Boys' Club where the fellows really play. The team has enjoyed rather an up and down season as far as the score books are concerned, but they certainly have given us a good time as we have watched them.

Another favorite chant around S. P. B. I. is "Play me a game of ping pong." Before settling down to some hard studying after the afternoon classes are over, the intelligent student knows that it will refresh his mind considerably if he relax his body in a fast game of ping pong. And so to the gymnasium he goes. Within a half hour he is ready to concentrate on that Theology theme that is due within three days.

And so, sports play a great part in the everyday life of the student. They keep us healthy, wealthy(?), and wise.



30th Anniversary



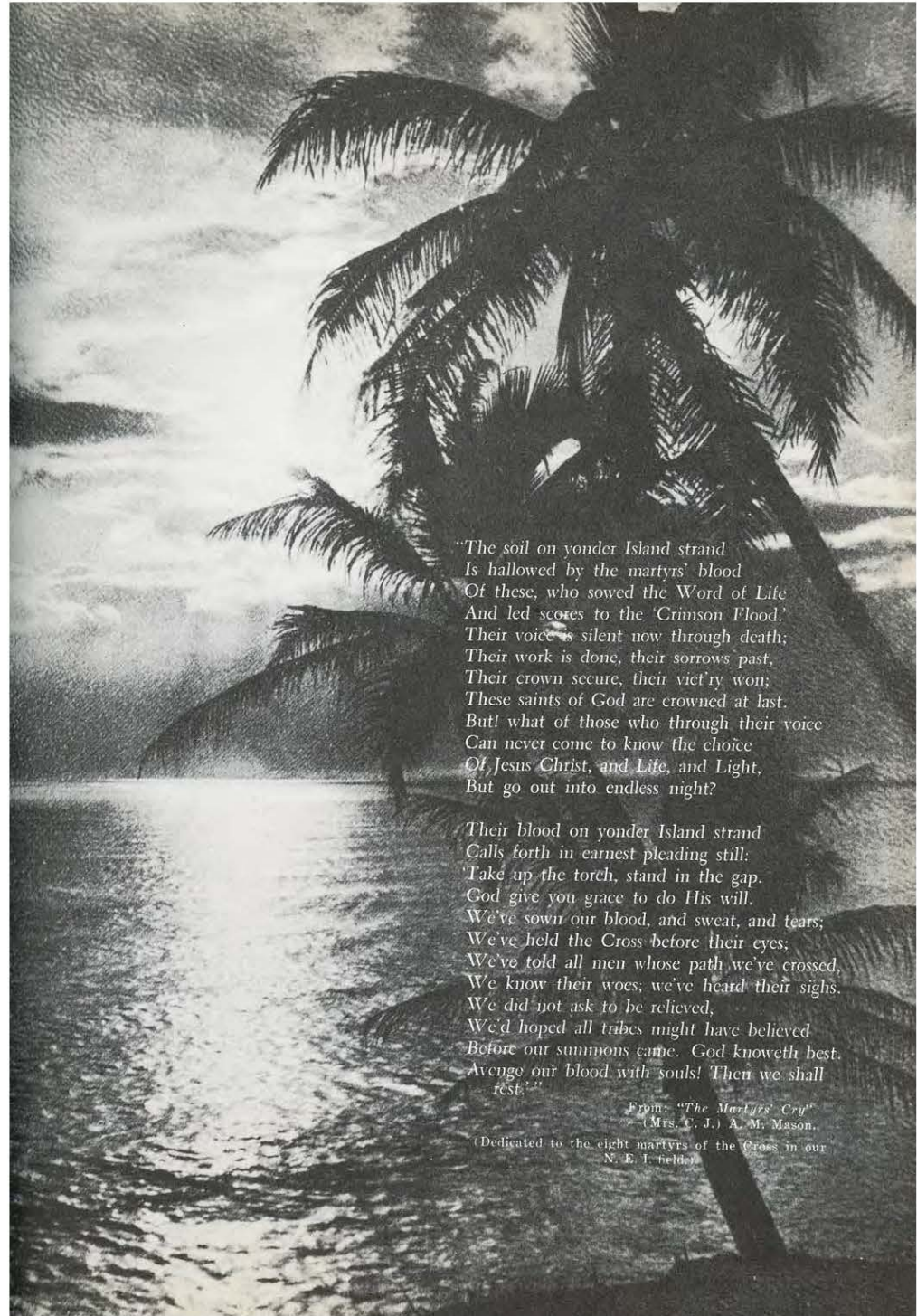
APPLICATION
OF THE TASK

In Memoriam

To the memory of those gallant heroes of the Cross whose lives have been offered as living sacrifices on the altar of martyrdom, these pages are reverently dedicated. It is our prayer that the following CHALLENGE may find a response in the hearts of young people everywhere.

"In this letter I inform you of my decision which is the most difficult one of all my life. Very many people came and asked me if they might hide me. But when I prayed, and sought the will of the Lord God, I was led to follow a way which is difficult for my body but right concerning my soul. . . . If I hide, naturally the saints will be forced to lie and to disobey orders if they hide me. I would be forced to drag them into sin. Whereas my intention upon leaving my country and family was only to make men and women righteous, and not to bring them into sin, even though I pay for it with my life. In short, sir, because of Jesus Christ and His atonement, before I will do anything whatsoever that is not right, I will surely surrender myself. May my Savior be with me as He promised. Until now He has been with me and I know that He will be with me until the end."

Excerpts from writings of John Willinger, missionary martyr.



"The soil on yonder Island strand
Is hallowed by the martyrs' blood
Of these, who sowed the Word of Life
And led scores to the 'Crimson Flood,'
Their voice is silent now through death;
Their work is done, their sorrows past,
Their crown secure, their victory won;
These saints of God are crowned at last.
But! what of those who through their voice
Can never come to know the choice
Of Jesus Christ, and Life, and Light,
But go out into endless night?

Their blood on yonder Island strand
Calls forth in earnest pleading still:
'Take up the torch, stand in the gap.
God give you grace to do His will.
We've sown our blood, and sweat, and tears;
We've held the Cross before their eyes;
We've told all men whose path we've crossed,
We know their woes; we've heard their sighs.
We did not ask to be relieved,
We'd hoped all tribes might have believed
Before our summons came. God knoweth best.
Avenge our blood with souls! Then we shall rest."

From "The Martyrs' Cry"
(Mrs. C. J.) A. M. Mason.

(Dedicated to the eight martyrs of the Cross in our
N. E. I. field.)

OFFICERS OF THE MISSIONARY SOCIETY



Under the competent leadership of the officers of the 1946 Missionary Society, the vital missionary program of our school has been carried forward successfully.



PAUL DAVIS Pres
DOROTHY INGWERSON . . . Vice-Pres
RUTH SUNDEEN Secy
EUGENE JONES Trea
MIRIAM CAIN Cu
LEWIS COLLINS Cu

SEATED — M. Cain, R. Sundeen, L. Collins.
STANDING — E. Jones, P. Davis.
NOT PICTURED — D. Ingwersen
(Now attending Taylor University)

FRIDAY NIGHT MISSIONARY MEETING



SHORTLY after the founding of our school in 1916, Mr. and Mrs. J. D. Williams began to teach Bible classes in the evening. The classes became so popular that finally it was decided that a missionary meeting be held after the usual Friday night lecture hour. This was the beginning of what is now known as the Friday Night Missionary Meeting. Since then it has become the most appreciated service of the week, and through its channels thousands of dollars have been pledged to missions by the student body. *This year's total amounts to \$7,353.*



MUSIC and the ministry of the spoken word were blended in the World Missions Night program held in the St. Paul Municipal Auditorium on the evening of February 12. This annual event, planned to stimulate interest in the missionary needs of the world, was attended by 1100 people. Four students, representing the various mission bands, were chosen as the speakers of the evening.

PAUL DAVIS, who was born of missionary parents in China, represented the Far East, the land to which he soon expects to sail.

RUTH STROHM, daughter of missionaries to the Philippines, spoke with a vision for the American continents.

LLOYD VAN STONE, called to serve on the mission field, represented the Near East.

DORIS DUCKWORTH, who intends to serve the Lord in the Pacific Islands, spoke on behalf of the Island World.

The St. Paul Choral Club, under the able direction of Professor J. Merrill Tannehill, was featured in the musical program. Also featured was Professor Theodore Bergman at the console.

The service reached a glorious climax as hundreds of young people filled the platform in response to the challenge of "World Missions," thus sealing their consecration vows to the Lord of the Harvest.

WORLD MISSIONS NIGHT

Wednesday, February 12, 1947

St. Paul Municipal Auditorium



PRAYER BANDS



AMERICAN INDIAN

OFFICERS

President EUGENE GAPP
 Vice-president STEPHEN HOKSINA
 Secretary-Treasurer EUNICE KJELLMAN

HOME MISSIONS

OFFICERS

President LLOYD REDIGER
 Vice-president CLIFTON LESLIE
 Secretary LORRAINE ASKEROTH
 Treasurer RICHARD FLEGE

American Indian Home Missions

"Full Gospel work was first begun among the Chippewa Indians of Minnesota about twenty years ago. Since then, pioneer work has been started in Montana, North and South Dakota, and Wisconsin.

"Where there is no vision, the people perish.' Missionaries on our foreign fields have caught the vision and realized the value of Bible School training for native workers. Our Indian mission-aries in this Northwestern area have caught this same vision of a Bible School and a Bible Camp for our American Indians. If the Indian youth is to preach the Gospel to his own people, we must first teach him. If he is to go, we must send him.

"Today there are silent hills, silent ruins, silent Indians, bearing the story of the real American — the man of bronze who is longing and waiting for someone to tell him the old, old story of Jesus and His love. Is he waiting for you?"

From World Missions Address
 RUTH STROHM (pictured below)





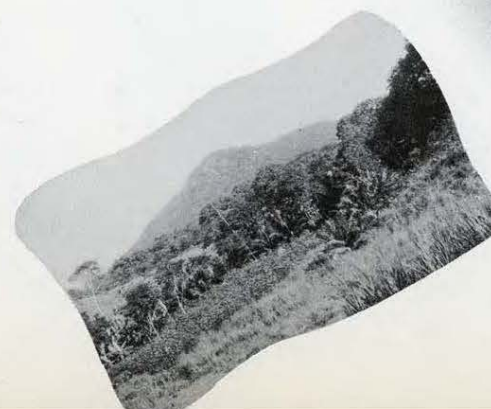
OFFICERS

President THOMAS JONES
 Vice-President MARJORIE JOHNSON
 Secretary JEANNE WIMBERLY
 Treasurer WALDO PUST

South America

"South America is a continent populated by nearly ninety millions of people, the vast majority of whom are bound by chains of error, superstition, ignorance, and vice. It has been called 'The Neglected Continent' and rightly so. In times past the rest of the world has been quite content to remain in ignorance concerning the progress of these growing Latin countries, classing them as illiterate and lawless tropical states. Be this as it may, by far the saddest and most serious aspect has been the spiritual neglect of South America. No satisfactory reason can be offered for the inaction for centuries on the part of the Christian church, especially that of North America, toward a people so close at hand. The only conclusion to be drawn and the only verdict that can be given is this: guilty neglect, due to the lack of spiritual concern for the souls of men."

From World Missions Address
 RUTH STROHM





OFFICERS

President WILLIAM STEWART
 Vice-President . . FAUNA FAY GANGWISH
 Secretary PHYLLIS MUELLER
 Treasurer LAURA PARNHAM

Africa

"For centuries Africa has been a land of mystery, a land of darkness. Wild tales and blood curdling stories have been told of the wild savages and cannibals that inhabited its interior. There were stories of men who acted and looked like beasts rather than human beings, who used human skulls for drinking cups and who offered one of their race as a sacrifice to appease the evil spirits. Truly this is a land of darkness, and its people are those that correspond to the description given by the Psalmist when he wrote, 'Such as sit in darkness and in the shadow of death, being bound in affliction and iron.'

"The spiritual responsibility of reaching Africa with the Gospel is far greater than we realize. Into our hands God has given the task of taking the light of salvation to these people who today are beckoning with out-stretched hands for help. God said, 'All the world'. These regions in the heart of Africa are part of that ALL. Will we answer God's call, or will we turn our backs upon those who are perishing without Christ!"

From World Missions Address
 LLOYD VAN STONE (pictured below)





FRENCH INDO-CHINA

OFFICERS

President LUCILE FRENCH
 Vice-President ELDON BALDWIN
 Secretary MIRIAM CAIN
 Treasurer ANNE SCHMID

CHINA

OFFICERS

President ELAINE BRANDT
 Vice-President DONNIE OVERTON
 Secretary MARIAM SENSENEY
 Treasurer DOROTHY OELLERMAN

French Indo-China China

"Look at Indo-China, in the southeastern corner of Asia, where the cultures of India and China meet. Here missionary work was begun in 1911. Growth was so rapid that the native church of Indo-China was fully self-supporting and self-governing but now church is not only native missionaries to primitive tribes' people sends forth its own native missionaries to primitive tribes' people in their country. Today these Christians of Indo-China need our prayers as never before for their country is torn by bitter civil war."

"China is still groaning under the merciless burden of war. In fact she is in her tenth year of almost unbroken warfare. World War II having subsided, China is bleeding from bitter civil strife between Nationalists and Communists. Of course this long continued warfare affects the spread of the Gospel to China's multiplied millions. Yet in spite of hardship, persecution, and the ravages of modern war, the Chinese Christians have remained faithful to the Lord Jesus Christ; and He has abundantly fulfilled His promises to them."

From World Missions Address
 PAUL DAVIS (pictured below)





OFFICERS

President EDWIN BARGEN
 Vice-President MERWIN GORDON
 Secretary CAROL HERMAN
 Treasurer RUTH SUNDEEN

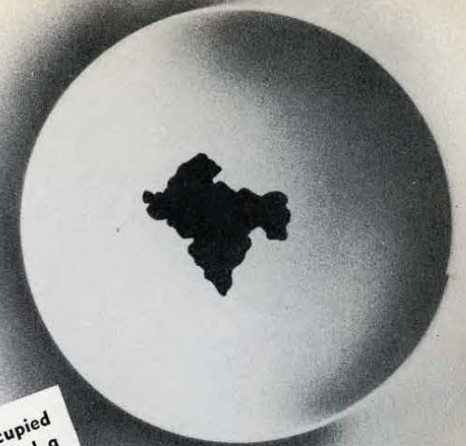
India

"India, one of the oldest of mission fields, has been occupied since the days of William Carey. But even now a century and a half later, twenty-seven thousand people die without Christ in India each day. World War II has brought great political upheavals which are bound to affect missions in this land. The independence so long sought for is not an unmixed blessing.

"From Asia's sobbing millions comes the cry for the Gospel. A generation is passing away without Christ and unless we reach our own generation now, it will be forever too late!

"Young people, hasten with the glorious Gospel of Christ to the vast unreached regions of Asia. These lands have presented their challenge. Don't let your answer be 'too little, too late'."

From World Missions Address
 PAUL DAVIS





OFFICERS

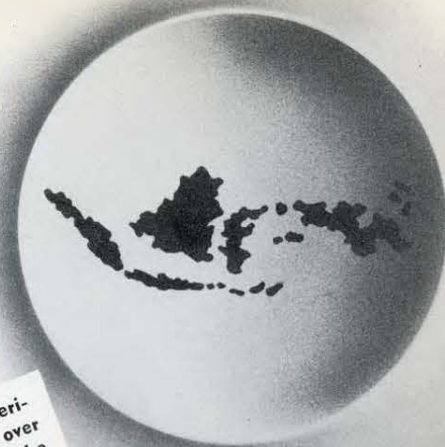
President DORIS DUCKWORTH
 Vice-President CARROL STROSHINE
 Secretary-Treasurer BEVERLY HURD

Island World

"If you were to fly out over the Pacific Ocean in one of America's million dollar planes, this is what you would see. Lying over the curve of the earth, surrounded by circles of white foam of the pounding ocean, would be clusters of palm fringed isles — some large, some small, some green, some barren. What you would not see are the moving millions of brown skinned natives. Here are a people born to hell! But as human beings for whom the Lord Jesus died they are as much entitled to hear and to believe the Gospel, and to be saved and to inherit the riches of Christ, as we are.

"The missionary ranks, however, have been depleted. Reserves are needed. They need those who will step up and step into the places left vacant. They need those who will push onward and forward into the places where the others could not go. Watch them as they go by! There is an empty place you can fill. Step into line! Fill in the gap! Go on with them as they strive to conquer every mile of those Isles for Christ!"

From World Missions Address
 DORIS DUCKWORTH (pictured below)





OFFICERS

President MALVIN VAN SCHOOTEN
 Vice-President ELAINE RATHJEN
 Secretary RUTH HOLMGREN
 Treasurer RALPH ENGEL

World Missions

Thou hast giv'n to me a trust,
 High and Holy dispensation,
 To tell the world, and tell I must,
 The story of Thy great salvation;
 Thou might'st have sent from heav'n above
 Angelic hosts to tell the story,
 But in Thy condescending love,
 On men Thou hast conferred the glory.

Thou hast commanded us to go,
 Oh never let our hearts betray Thee,
 And thou hast left an awful woe,
 On all who lightly disobey Thee;
 Oh let us feel and fear that woe,
 As we would guard our own salvation,
 And let us answer to that "go,"
 As witnesses in ev'ry nation.

We all are debtors to our race;
 God holds us bound to one another;
 The gifts and blessings of His grace
 Were given thee to give thy brother;
 We owe to ev'ry child of sin
 One chance, at least, for hope of heaven,
 Oh by the love that brought us in,
 Let help and hope to them be given.

—A. B. Simpson.

© Christian Publ., Inc. Used by permission.





SHIELD STAFF

Assuming
the
executive
position.



...Advisor congratulates
editor (in everything
but shots of himself).



... The book's out!
(So's the staff.)



Photography Editor Gunther Ullmann tries to sell an art layout to the Art Editor Doris Duckworth and Secretary Frances McIntyre ... while ... Sales and Promotion Manager Tom Jones doesn't seem to be making a very good impression judging by the look on the face of his Co-Manager Betty Zumhingt and Secretary Lorraine Askerooth.

It seems to me that Advertising Manager Lowell Davis is rather wide awake for that hour in the morning. His Secretary Eleanor Riter seems to be enjoying her mid-morning snack.

Waldo Pust, treasurers aren't supposed to be broke!

Music Editor Elaine Rathjen and Missionary Editor Ruth Strohman seem to be having a friendly chat with the Christian Service Editor, Ethel Killgrove.

When a staff finishes a book, spends the last sleepless night and sends the final copy to the printer, it wonders what "the people" are going to think about it. To the individual mounted in a prominent spot it's wonderful. To the one a shade out of focus it's awful. To the friends for whom the book brings back 30 or so years of memory it's pleasing.

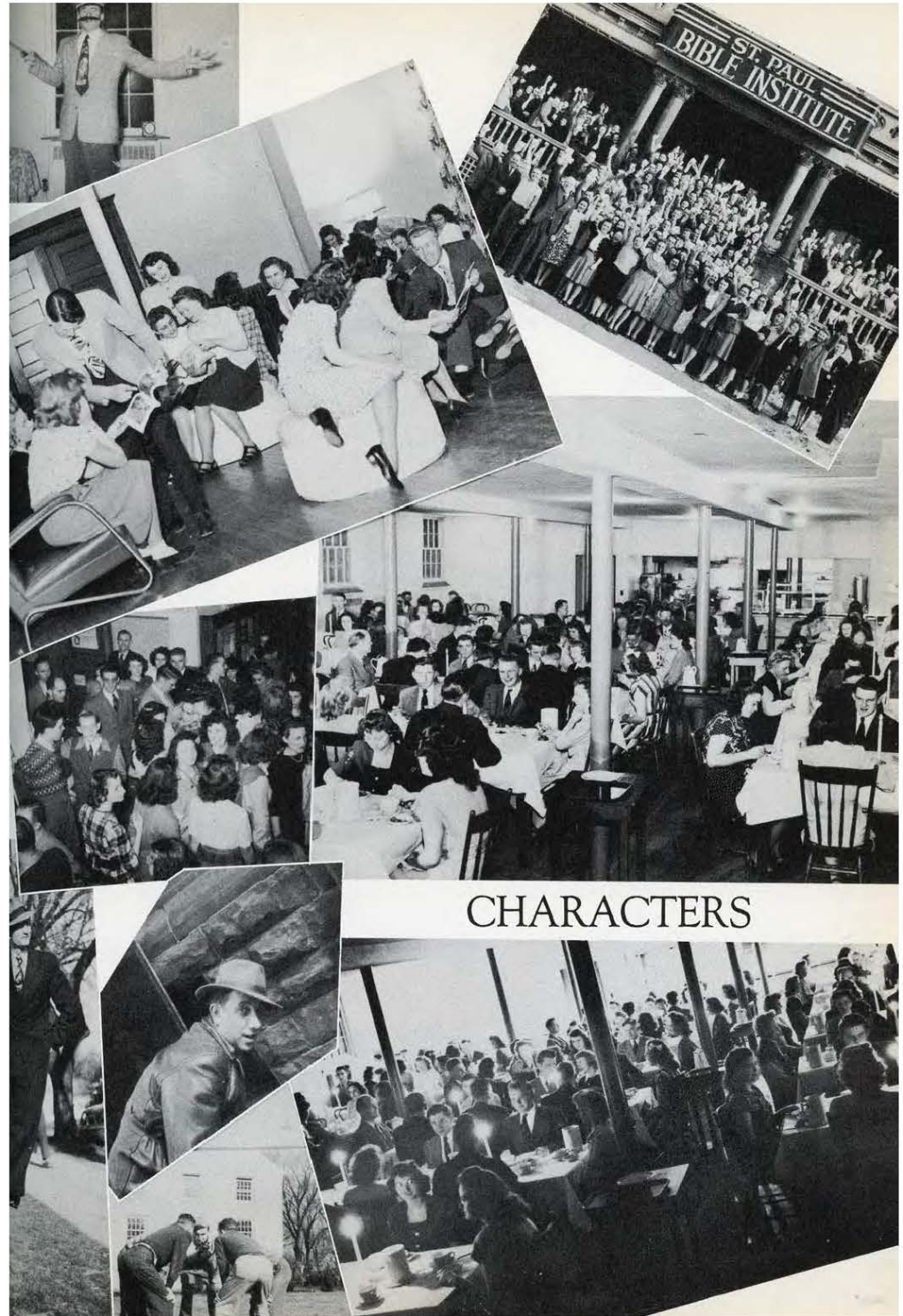
However, we know that many young people will put their hands on this book, and so we send this printed testimony off especially to these young readers with a prayer that this SHIELD will assist in a small measure in precipitating their decisions for Christ.

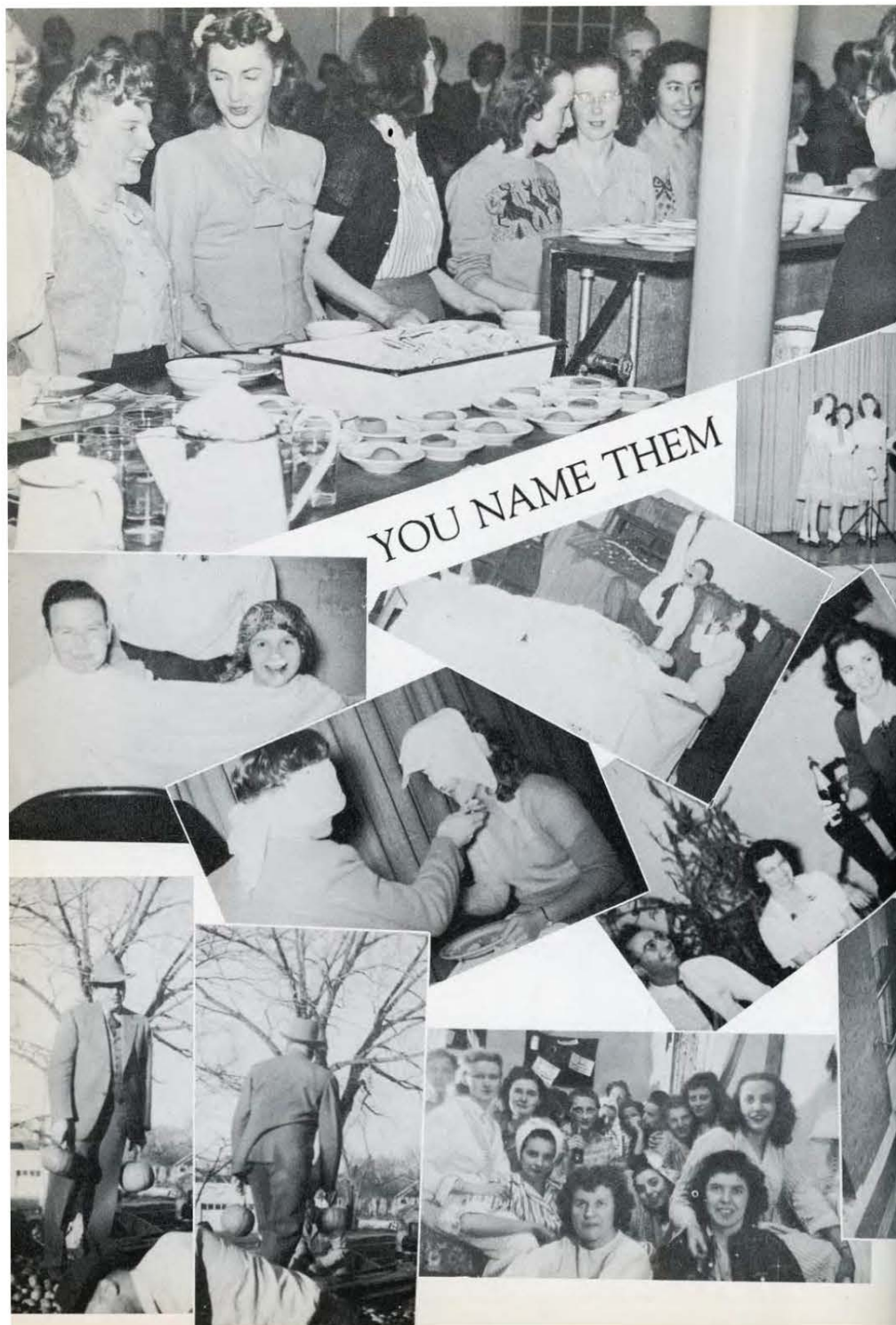


Alumni Association of the S. P. B. I.

For several years "The Fellowship League" of the St. Paul Bible Institute served as a connecting bond to hold together the alumni of the school. But last year it was felt by many that, with the rapid growth of the school and the rapidly increasing number of alumni, an alumni organization of more definite program and objective should be launched. Consequently, steps were taken by The Fellowship League which resulted in the drawing up of a new constitution and an entirely new organization to be known as "The Alumni Association of S. P. B. I."

This new association, with Rev. Walter Fox of Duluth as first president, has already launched a definite program aimed at contributing definitely to the advancement of the school, as well as to maintaining a fellowship among the alumni. This year, for the first time, a \$50 scholarship was awarded to a Junior student of merit. This scholarship will be repeated annually and increased as growth of the association makes it possible. Other scholarship recognitions have also been made. Now plans are being formed for a definite forward move aimed at enrolling all alumni as active participants in the association, and at making it a potent force for good in the future of the school.





St. Paul Bible Institute

"THE SCHOOL THAT PREPARES FOR TOMORROW"

Presents for 1947-48

The Institute Course—

Majoring — Theology — Missions — Christian Education
Leading to Diploma

The School of Theology—

60 hours college prerequisite Majoring in Theology — Missions
Leading to Th. B. degree

The School of Music—

Majoring in Voice — Instrumental — Music Education
Four years leading to B. Mus. Degree

INSTITUTE CALENDAR

FIRST SEMESTER

Faculty Retreat	Sept. 4, 5
Registration of Seniors and Juniors.....	Sept. 9
English Examinations (Freshmen).....	Sept. 9
Registration of Freshmen.....	Sept. 10
Opening Exercises.....	Sept. 10
Classes Begin	Sept. 11
Faculty Reception of Students.....	Sept. 15
Fall Revival.....	Oct. 1-3
Thanksgiving Recess	Nov. 26
Classes Resumed	Dec. 1
Prayer Retreat.....	Dec. 3, 4, 5
Mid-Winter Recess.....	Dec. 17
Classes Resumed	Jan. 6
Semester Examinations.....	Jan. 19-23

SECOND SEMESTER

Registration	Jan. 26-27
Classes Begin.....	Jan. 28
Mid-Winter Revival.....	Feb. 9-13
Missionary Convocation	Feb. 12
Easter Vacation.....	Mar. 26 - April 6
Classes Resumed.....	April 7
Final Examinations.....	May 24-27
Baccalaureate Address.....	May 30
Commencement	May 30

*Congratulations
to the Saint Paul Bible Institute
on their 30th anniversary*

MONTGOMERY WARD

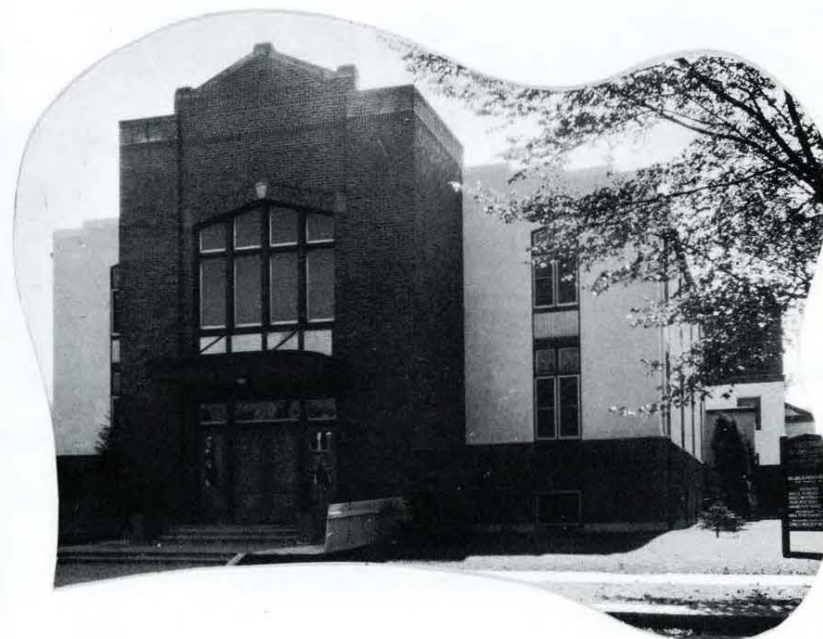
1400 University Avenue
Saint Paul, Minn.

Compliments of
**STANDARD CONSTRUCTION
COMPANY INCORPORATED**

250 Builders' Exchange Building
Minneapolis, Minnesota

312 Hamm Building
St. Paul, Minnesota

Simpson Memorial Church



*Best Wishes to
Graduates*

J. C. WENNINGER, Music Director

PAUL KENYON, Pastor



Havelock Gospel Tabernacle

of the

**Christian and Missionary
Alliance**

6433 Havelock Ave.
Lincoln, Nebr.

REV. O. L. MORROW, Pastor

"But God forbid that I should glory, save in the cross of our Lord Jesus Christ, by whom the world is crucified unto me, and I unto the world."—Gal. 6:14.



TEN STUDENTS IN ST. PAUL THIS YEAR



Congratulations

to the President-Dean of the St. Paul Bible Institute, and all his associates, upon the completion of another successful year of preparing young men and women for spiritual leadership in the church of tomorrow.

The Western District OF THE CHRISTIAN AND MISSIONARY ALLIANCE

CECIL R. THOMAS, Superintendent • 6910 S. LOWE AVENUE, CHICAGO 21, ILLINOIS

The Northwestern District of the

» » » » CHRISTIAN AND MISSIONARY ALLIANCE

Adds Its Congratulations . . .

**to the twenty-ninth graduating class of
The St. Paul Bible Institute, and wishes
each member a God-ordained and far-
reaching ministry.**

***"In all thy ways acknowledge Him, and He
shall direct thy paths."***

DISTRICT OFFICERS

Rev. C. J. Mason Superintendent
Rev. G. E. Meyer Secretary
Rev. L. W. Pippert Treasurer

NORTHWESTERN DISTRICT



SINCE 1933

THE OSBORNE CO.

706-708 No. Snelling Ave.

NEW Furniture and Pianos

Robt. Geo. Osborne We Specialize in Swaps

Phone MI. 6500

Commonwealth Electric Co.

ELECTRIC WIRING — MOTOR REPAIRING

Switchboards — Panelboards and Cabinets

Power Plant Equipment

417 Broadway St. Paul 1, Minn. GA 1836

MIDTOWN BARBER SHOP

The students of the school appreciate the neat work and pleasing atmosphere of this Christian barber shop. There is a reason why this skilled Christian Barber is always busy.

MIDTOWN BARBER SHOP

634 N. Snelling Ave St. Paul, Minn.

Sanitary Service



HAMLIN HARDWARE

Snelling and Englewood Tel. MI 3037

For the UNUSUAL in Flowers

BARR'S FLOWER SHOP

Snelling at University . . . St. Paul 4, Minn.

NE 7941

Res. MI 9970



The Restaurant China Company

Everything for Restaurant and Soda Fountain
213-19 E. 4th St.

ST. PAUL 1, MINN. CE 8484

Opposite Union Depot

COMPLIMENTS OF A FRIEND

C. J. and H. W. ANDERSON

Jewelers and Optometrists

1573 University Avenue

Midway 9910

Greetings and Congratulations

TO THE

CLASS of 1947

FROM

America's Oldest Bible School

The Missionary Training Institute

NYACK, N. Y.

M.T.I. OFFERS FULLY ACCREDITED
COURSES IN

**THEOLOGY
MISSIONS**

**CHRISTIAN EDUCATION
SACRED MUSIC**

For further information address:

DR. THOMAS MOSELEY, The Missionary Training
Inst., Nyack, N. Y.



LADIES' DORMITORY



Rev. Gordon Meyer

The HAWLEY BIBLE CHURCH

OF THE

**Christian and Missionary Alliance
Hawley, Minnesota**

Rev. Gordon E. Meyer, Pastor

CONGRATULATES
THE 29th GRADUATING CLASS
of the
ST. PAUL BIBLE INSTITUTE

CHRISTIAN AND MISSIONARY ALLIANCE CHURCH

1822 No. 16th St.

Superior, Wis.



H. P. VOTH, Pastor

"For I am determined not to know anything
among you, save Jesus Christ, and Him
crucified."—I Cor. 2:2.

Sunday, 10:00 A.M. Sunday School
Sunday, 11:00 A.M. Morning Worship
Sunday, 7:00 P.M. Young Peoples Meeting
Sunday, 7:45 P.M. Evening Evangelistic Service
Wednesday, 7:45 P.M. Bible Study & Prayer Meeting

Compliments of the

HAZEL PARK ALLIANCE CHURCH

East Seventh and White Bear Ave.

St. Paul 6, Minn.

HAMLIN CLEANERS

Prompt — Complete — Courteous
CLEANING SERVICE



Your Satisfaction Assured



724 Snelling Ave. N.

MI 5885



Greetings
from Rev. & Mrs. D. A. Needham

and
the



**Christian &
Missionary Alliance
Church**
Green Bay, Wisconsin

R. A. MYERS & COMPANY

1539 Marshall Ave.
St. Paul, Minn.



SOAPS — WAXES — DISINFECTANTS
JANITOR SUPPLIES

S-L-A-T-E-R-S

1557 University Ave.

for

COMPLETE MEALS

11 A. M. to 8 P. M.

KAISER

FRAZER

MINER MOTOR CO.

Repairs on all makes and models
Expert Body and Fender Work

Free Estimates

NE 9677

571 N. Snelling Ave.

DA 1084

924 University Ave.

EUGENE D. CORWIN, Architect

813 Guardian Building
St. Paul 1, Minn.



Architect for the New Boys' Dormitory



Onward Christian Soldiers — to a world of
Peace and Good-Will!

ROY R. DUE

Manufacturing Jeweler — Optical Repairing

Diamonds — Mountings — Watches — Wedding and Stone Rings

Office—CEdar 6011
Res.—Van Buren 0207

510 Bremer Arcade
St. Paul, 1, Minnesota

Compliments of

DR. W. J. ABELL

BIBLES and NEW TESTAMENTS

MOTTOES and PLAQUES

SONG BOOKS

CHRISTIAN LITERATURE

BOOKS

FLANNEL-GRAPH MATERIAL

Complete Lines

Devotional, Inspirational, Prophetic, Missionary,
Biographies, and Special Books.

Inquire at the Alliance Book Room for any new
and outstanding Christian Publications.

The Institute Book Store

Midway 0870

1361 ENGLEWOOD AVENUE

ST. PAUL, MINNESOTA

30th Anniversary
CONGRATULATIONS
to the
SENIOR CLASS
from the
**LARGEST
FRESHMAN CLASS**
in the History of the
ST. PAUL BIBLE INSTITUTE
1947

THE JUNIOR CLASS

extends

Hearty Congratulations

to the

Senior Class of 1947

of the

St. Paul Bible Institute

GEORGE D. STROHM
1361 Englewood Ave.
St. Paul, Minnesota

GEORGE A. FRENCH
1361 Englewood Ave.
St. Paul, Minnesota

NELL ROSE DOYLE
1361 Englewood Ave.
St. Paul, Minnesota

D. J. KENYON
1361 Englewood Ave.
St. Paul, Minnesota

S. W. RICHARDSON—'40
1361 Englewood Ave.
St. Paul, Minnesota

ETHEL A. STREET
1361 Englewood Ave.
St. Paul, Minnesota

RUTH JONES—'31
1361 Englewood Ave.
St. Paul, Minnesota

EDNA TEETER—'43
1361 Englewood Ave.
St. Paul, Minnesota

YVONNE HEIDEN—'46
1361 Englewood Ave.
St. Paul, Minnesota

VONNIE MORSCHECK—'44
1361 Englewood Ave.
St. Paul, Minnesota

FERN ZIMMERMAN—'46
1361 Englewood Ave.
St. Paul, Minnesota

CHARLES H. SHAW
1361 Englewood Ave.
St. Paul, Minnesota

J. C. WENNINGER—'41
1361 Englewood Ave.
St. Paul, Minnesota

A. T. WASHINGTON—'43
Northfield
Minnesota

GLADYS QUADERER—'30
1361 Englewood Ave.
St. Paul, Minnesota

REV. & MRS. H. L. TURNER
1361 Englewood Ave.
St. Paul, Minnesota

REV. & MRS. GORDON MEYER
Hawley —'29
Minnesota

OSCAR AUVERSON—'22
Mount Sterling
Illinois

DUANE MORSCHECK—'44
Box 155
Cumberland, Iowa

EBBA ADELSMAN—'31
Fergus Falls
Minnesota

GREETINGS
from
St. Paul's
Alumni
and
Friends

REV. & MRS. J. S. RAHN
(Nee Rena Harding—'29)
Monticello, Minnesota

MR. & MRS. H. BATDORF—'35
Cass Lake
Minnesota

REV. & MRS. CHAS. PIERCE
(Nee Dagmar Nelson—'39)
Richey, Montana

MR. & MRS. N. E. WERNER—'43
Garrison Alliance Church
Garrison, Minnesota

REV. & MRS. RAYMOND LEE—'42
Meadow Grove
Nebraska

MRS. JAMES OGDEN—'39
(Nee Lillian Lund)
Highmore, South Dakota

VIOLA PETERSON—'45
McAllen
Texas

WALTER E. RUPP—'24
Verndale
Minnesota

ADDIE B. RAINES
1361 Englewood Ave.
St. Paul, Minnesota

HELEN LEMKE—'45
Garner
Iowa

AUDREY CORNFORTH—'45
2632 - 3rd Ave. S.
Minneapolis, Minnesota

LYDIA PETRAK
1361 Englewood Ave.
St. Paul, Minnesota

ISABELLA HOLKETT—'45
Poplar
Wisconsin

FRANK HOLMES—'43
Siren Gospel Tabernacle
Siren, Wisconsin

HELEN L. DUEHOLM—'40
314 N. Pierce St.
St. Paul, Minnesota

MISS M. STREET—'22
1670 Englewood Ave.
St. Paul, Minnesota

RUTH M. CARLSON—'40
637 Wright Street
Santa Rosa, California

PETER F. WALLER—'22
Malta
Montana

RUTH ANDERSON WALLER—'22
Malta
Montana

ANNA HANSON—'31
Hays
Montana

LILLIE THIMELL—'26
Hays
Montana

BETHEL COLLEGE AND SEMINARY Announces the addition of a Senior College

The Board of Directors has decided upon the expansion of Bethel's Junior College into a four-year program. The plans call for the addition of the third year's work in 1947-'48, and the fourth year in 1948-'49.

The new program will be organized on the same foundations that have been so blessed by God in the Junior College:

Full confidence in the Bible.

Full academic accrediting.

A carefully selected student body.

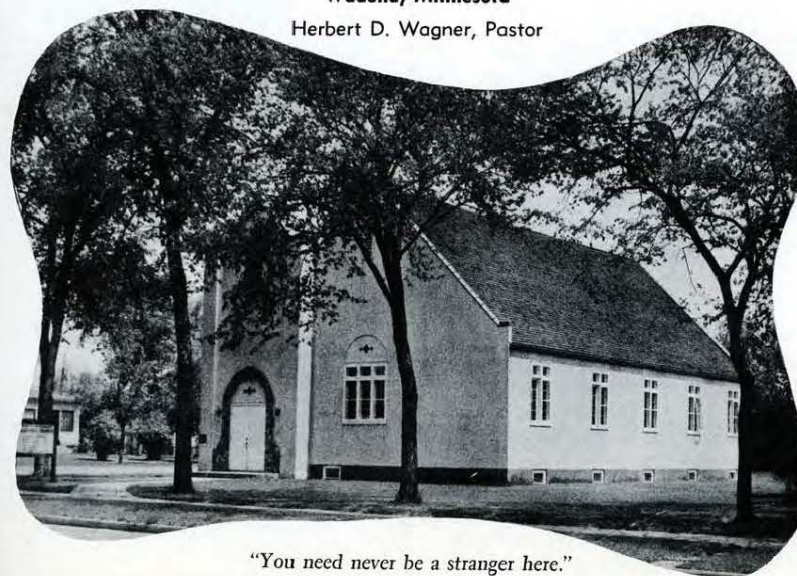
A capable well-trained teaching staff.

A strong missionary and prayer emphasis.

The academic majors are being selected with a view to preparation for Christian service.

Christian & Missionary Alliance Church Wadena, Minnesota

Herbert D. Wagner, Pastor



"You need never be a stranger here."

**The
JOESTING & SCHILLING
Company**

COMPLETE HOTEL, RESTAURANT
AND INSTITUTION OUTFITTERS

Saint Paul, Minnesota

HAMLIN DRUG STORE

719 North Hamline

"Your Friendly Corner Drug Store"

GEO. C. PAUL, Reg. Ph., Prop.

WE SPECIALIZE IN PRESCRIPTIONS

Drugs, Candy, & Fountain Service

Congratulations



A. Swanson
SINCE 1893
St. Paul, Minn.
512 No. Snelling at Univ.
Phone NE 7178

PAINTS

Everything in Paint, Wallpaper
and Painters' Supplies

Complete Art Department

Materials for Artist and Craft Work
Electric Dustless Floor Sanders, Edgers, Scrub-
bing, Buffing and Polishing Machines, Plane
Sanders, Disc and Rotary Sanders for Rent.

Christ-Centered
TEACHING HELPS
for the Sunday School

Literature for all Departments

Write for Samples



UNION GOSPEL PRESS

Box 6059
Cleveland 1, Ohio

Rejoicing with You

IN THE 30th YEAR OF MINISTRY OF THE
ST. PAUL BIBLE INSTITUTE

BEST WISHES TO THE
GRADUATING CLASS OF
1947

The Alliance Missionary Church
of
Mountain Lake, Minnesota
Bernard S. King, Pastor

Compliments

**North Side
Alliance Church**

Corner Fremont & Lowry Avenue North
MINNEAPOLIS 12, MINN.

Paul W. Gunther, Pastor

OAK GROVE DAIRY

OAK GROVE'S rich dairy products are served at each meal in our dining room.

EL. 1018

Saint Paul

Uselman's Golden Ray Bakeries

"YOUR DAILY BREAD"

Distinguished Baked Foods

1815 Selby — MI 0627
2040 Marshall — MI 7768
784 Grand — EL 1153

WESTLUNDS

Quality Meats and Provisions

Specializing Servicing Restaurants,
Hotels and Institutions

Quick Freeze Service and Frosted Foods

597 No. Snelling, Cor. Thomas
NE 8621



STUDENTS
OF FINE FOODS
KNOW



HOME BRAND on the label
means GOOD FOOD on the table!

Griggs, Cooper & Co. — Twin Cities, Twin Ports, Fargo

Northfield Alliance Church
107 West Water St. Northfield, Minn.
A. T. Washington, Pastor

SUNDAY—
Sunday Bible School.....10:00 A.M.
Morning Worship.....11:00 A.M.
Prayer Service.....7:30 P.M.
Evangelistic Service.....8:00 P.M.
WEDNESDAY—
Bible Study and Prayer.....8:00 P.M.
THURSDAY—
Young People's Fellowship.....8:00 P.M.
Hearty congratulations to the
St. Paul Bible Institute
on its 30th Anniversary.

BIBLES H. E. ALMQUIST CHRISTIAN BOOKS TRACTS

IMPORTER OF SOUND EXPOSITORY BOOKS
GREEK AND HEBREW TEXTS AND LEXICONS

Specializing in the Deeper Life Writings
of

Mrs. Jessie Penn-Lewis — Oswald Chambers — T. Austin-Sparks
L. L. Legters — Andrew Murray
and many others.

Hours: 9 A. M. to 7 P. M.

3025 Irving Avenue South
Pleasant 3293

Minneapolis 8
Minnesota

CONGRATULATIONS CLASS OF '47



THE HOME DEPARTMENT

will welcome **some** of you to our ranks of 1192 Home Workers.

THE FOREIGN DEPARTMENT

will send **others** of you to reinforce our 645 Foreign Missionaries.

THE PUBLICATION DEPARTMENT

will serve **many** of you with our books, tracts, and periodicals.

We hope **all** of you will continue to share our fellowship and worldwide enterprise.

THE CHRISTIAN & MISSIONARY ALLIANCE

260 W. 44th Street

New York 18, N. Y.

St. Paul Bible Institute SCHOOL OF MUSIC

THEODORE BERGMAN, B. M.

Instructor of
PIANO — HARMONY — ORGAN

St. Paul Bible Institute
MacPhail School of Music
Bethel College
Northwestern Missionary &
Bible Training School

Accompanist, APOLLO CLUB, Minneapolis
Organist, First Baptist Church, Minneapolis

J. Merrill Tannehill

Director
School of Music
St. Paul Bible Institute

Maxine Tannehill

Instructor
MARIMBA — PIANO
Vibra Harp—Trumpet

THE MUSICAL TANNEHILLS

Artistic Gospel Music

Conventions - Conferences - Evangelistic Campaigns
Sacred Concerts

ORTON SELVIG

Instructor of
PIANO — ORGAN

St. Paul Bible Institute
MacPhail School of Music

Organist and Choir Director
AUGUSTANA LUTHERAN CHURCH,
Minneapolis



LEARN TO PLAY

Accordion Guitar
Banjo Mandolin Violin
Spanish — Italian

Private Lessons
at Reasonable Rates

*Gibson and St. Angelo Instru-
ments Sold, Sheet Music,
Strings, Accessories

BELLSON MUSIC CO.

376 St. Peter Street
*Exclusive

St. Paul, Minn.
CEdar 8820

LUCILLE MAXWELL

School of Music, St. Paul Bible Institute

Instructor of
SAXOPHONE—PIANO—VOICE—THEORY

1361 Englewood

St. Paul 4, Minn.

HAROLD T. BRUNDIN

TEACHER OF SINGING

St. Paul Bible Institute

Minneapolis College of Music

Director of Music
Park Avenue Methodist Church
Minneapolis

**Best Wishes and Sincere Appreciation
for the Assistance Furnished Us
during the past year**

MONTGOMERY WARD COMPANY

COMPLIMENTS OF
SIMPSON BIBLE INSTITUTE

"The Gateway to the Pacific Northwest, The Orient, and the Islands of the Sea."

Specialized Courses offered in
MISSIONARY TRAINING THEOLOGY
CHRISTIAN EDUCATION SACRED MUSIC

REV. RAYMOND L. CRAMER, B. D., President-Dean

101 West 58th Street

Seattle, Washington

"Duluth's Evangelistic Center"

Alliance Missionary Church
28th Ave. West at First Street DULUTH 6, MINNESOTA

Rev. Walter M. Fox — Pastor-Evangelist
Mrs. Walter M. Fox—Director of Music
Miss Eva Heikkinen—Church Missionary

S E R V I C E S

Sunday Bible School..... 9:45 A.M.
Worship Service 11:00 A.M.
Evangelistic Service..... 7:30 P.M.
Family Night of Praise and Prayer.....Wednesday 7:45 P.M.

Every Sunday Night Service is a Singspiration

ST. PAUL FEDERAL SAVINGS & LOAN ASSOCIATION

AXEL A. OLSON, Executive Secretary

Our thousands of customers with over eight million dollars invested in our association invite you to become a member. Each account insured to \$5,000.

353 Robert St., between 4th and 5th
ST. PAUL 1, MINN.

R. & K. SERVICE STATION

Snelling and Minnehaha

• PHILLIPS 66 PRODUCTS •

LUBRICATION — WASHING
BRAKE — IGNITION

WE CALL FOR AND DELIVER YOUR CAR

Just call us at Midway 1960

COMPLIMENTS

KESTING MUSIC

NELS K. LANGSTEN, Prop.

Complete Line of Band and Orchestral
Instruments

Pianos Repairs
Electrical Appliances

34 East Sixth St.

CE 4786

COMPLIMENTS

D. J. TUFTS

St. Paul Bible Institute Piano Tuner

PIANO TUNING AND REPAIRING

All Work Guaranteed

Parker 2367

4553 28th Ave. So., Mpls.



Congratulations To the Class of '47

And when you need tools for Christian work,
remember we have them!

Everything for the Church and Sunday School



Books
Flannelgraph Stories
S. V. B. S. Material
Child Evangelism Supplies

Reference Books
Hymn Books
Sunday School Literature
Attendance Helps

Write for a copy of our General Catalog

Christian Publications, Inc.
Third and Reilly Streets
Harrisburg, Pa.

William H. Dietz, Inc.
10 So. Wabash Avenue
Chicago 3, Illinois

A

L

U

M

N

I

★

★

★

★

★

★

★

★

Congratulations . . .

TO THE CLASS OF '47

WELCOME

To the Fellowship of our Alumni Organization at Home
and Abroad.

You can help the School NOW by participating in:

THE LIBRARY PROJECT
THE SCHOLARSHIP PLAN
THE DORMITORY BUILDING FUND
YEARLY MEMBERSHIP DUES
ACTIVITY IN LOCAL CHAPTERS
YOUR LETTER IN THE MESSENGER

The Scholarship Plan has been inaugurated recently to give financial assistance to a Junior who has achieved an outstanding record in his classes, conduct and leadership in the spiritual life of the Institute. The award is to apply on the student's expenses for the Senior year.

The Alumni Association

of the

ST. PAUL BIBLE INSTITUTE

1361 Englewood Avenue

St. Paul 4, Minnesota

★

★

★

A

S

S

O

C

I

A

T

I

O

N

Clarence J. Larson

PHOTOGRAPHER

Telephone Midway 1039

1455 North Pascal Street

Saint Paul 4, Minnesota

CANDID WEDDINGS — HOME PORTRAITURE — ACTIVITIES
SCHOOL ANNUALS — GROUPS — COMMERCIAL

CONGRATULATIONS TO THE CLASS OF '47

FUEL

The kind that will meet the needs of any consumer — plus deluxe service

"COMMANDER" KENTUCKY'S FINEST STOKER COAL, BLUE
POINT POCAHONTAS, KOPPERS COKE, STOTT and GLEN
ROGERS BRIQUETS, PETROLEUM COKE and REX FUEL OIL.

Phone us your order . . . NESTOR 6511

GREAT LAKES COAL & DOCK CO.

2102 University Avenue

Saint Paul, Minn.

