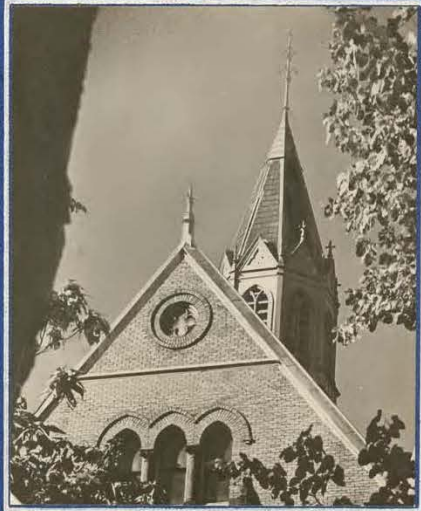
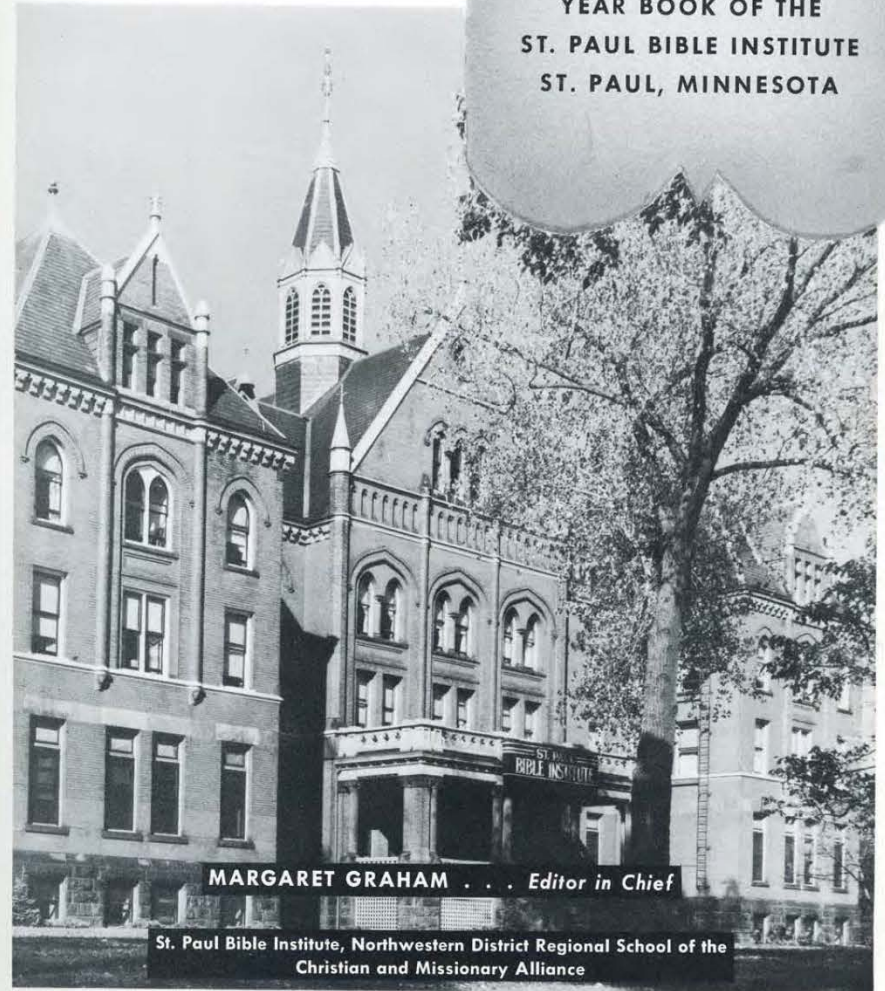


Shield
1949



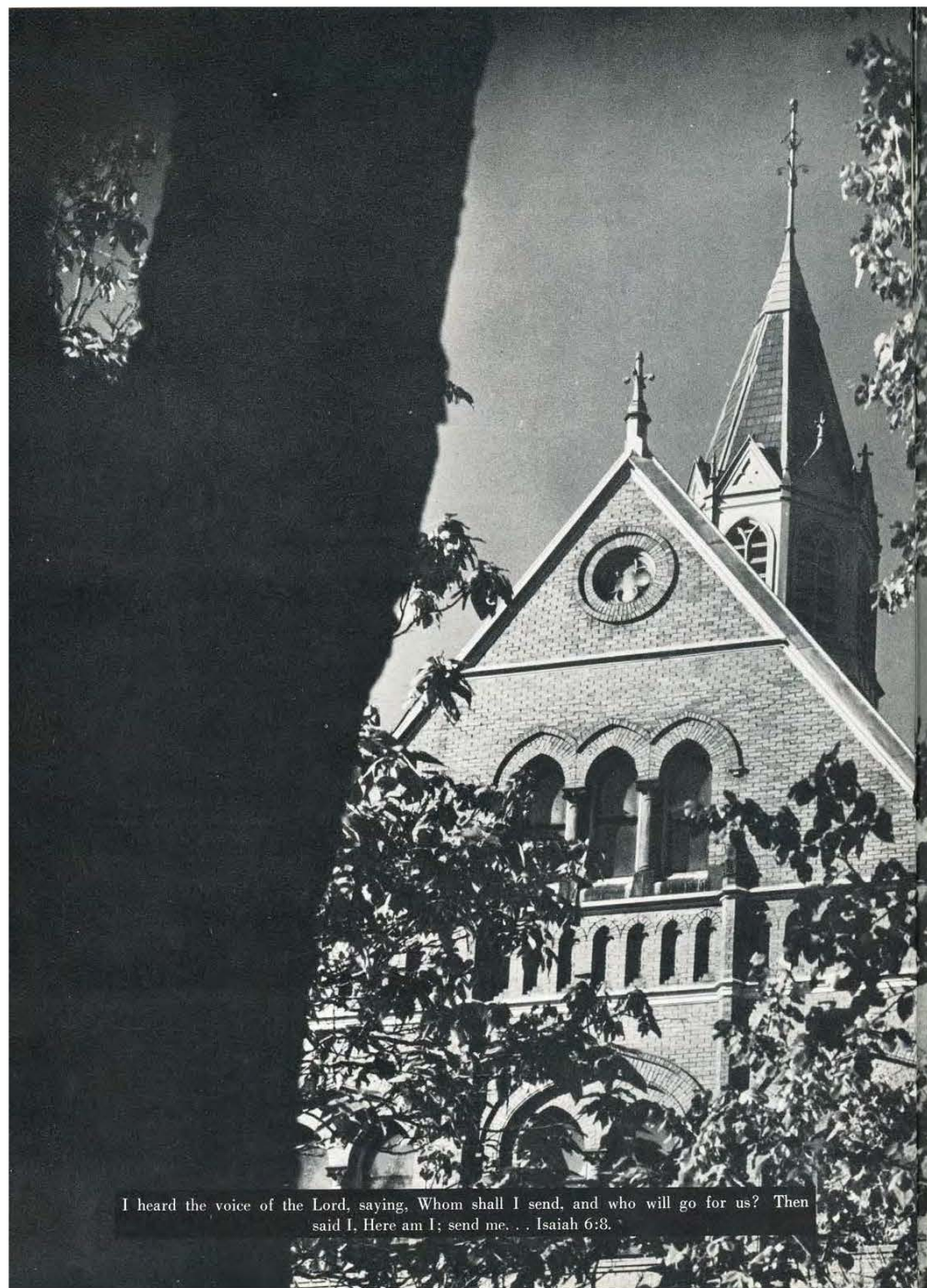
1949
SHIELD

YEAR BOOK OF THE
ST. PAUL BIBLE INSTITUTE
ST. PAUL, MINNESOTA



MARGARET GRAHAM . . . Editor in Chief

St. Paul Bible Institute, Northwestern District Regional School of the
Christian and Missionary Alliance



I heard the voice of the Lord, saying, Whom shall I send, and who will go for us? Then said I, Here am I; send me. . . Isaiah 6:8.



PREPARED



PLACES



FOR



PREPARED



PEOPLE

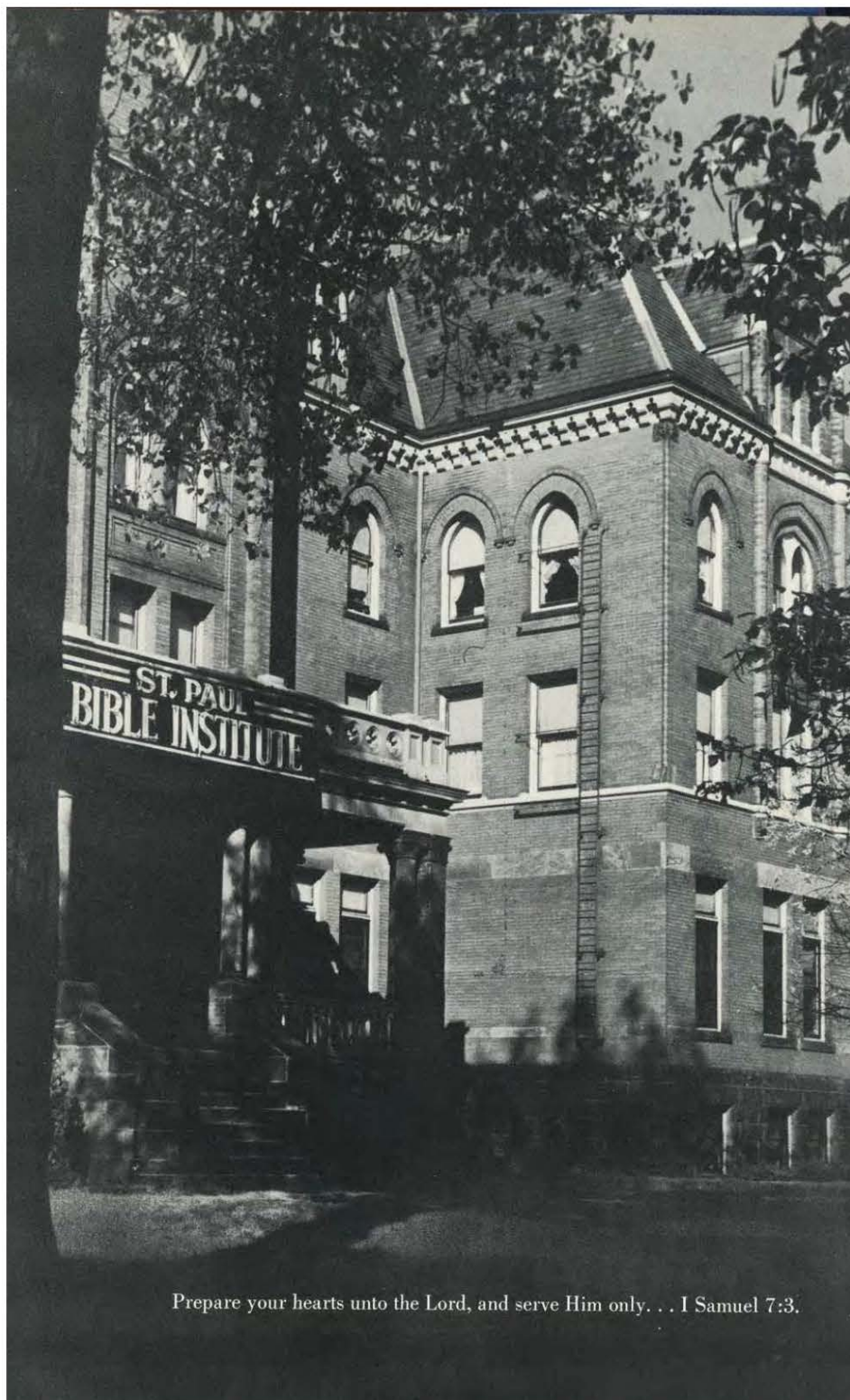




Apply thine heart unto instruction. . .



and thine ears to the words of knowledge. . . Proverbs 23:12.



Prepare your hearts unto the Lord, and serve Him only. . . I Samuel 7:3.



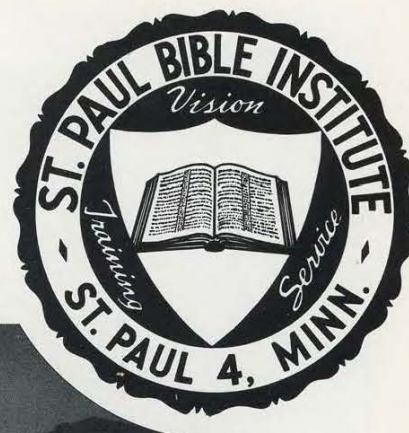
This year marks progress at Saint Paul. When Dr. Hillis, who was for many years a sympathetic neighbor of the Institute, left for Florida, the school bought his property and his lovely home now comfortably houses twenty-four students.
We thank God for this property that now graces our campus and marks another step in our forward march with Christ.

*North, South, East and West,
We Unite at St. Paul.
Christianity the Inseverable Bond*



*Young People With the Same Ideals,
Motives and Goal - Obeying God's Will,
Accepting the Missionary Challenge!*

*Preparing in These Halls for His
Service at Home or Abroad, Telling
Forth the Gospel of Christ.
His Command - Our Task!*





As the heart panteth after the water brooks, so panteth
my soul after thee, O God. . . Psalm 42.

DEDICATION

With deep appreciation, we the Shield Staff of 1949, dedicate this eleventh volume to you, Rev. George French, in recognition of your part in our preparation at St. Paul for the Lord's service.

We have seen Christ revealed in your life, through your love, patience and understanding. We have appreciated your help so kindly and wisely given. However, above all else, your missionary zeal and your Christlike passion for lost souls has made a deep impression upon our lives. Your example will someday bear fruit in the homeland and in some far distant land across the sea.

We feel honored in presenting this book, our labor of love for the Master, to one who has brought Christ closer to us.



PASTOR

STUDENT





G. D. STROHM, *President*

OUR FACULTY

S. W. RICHARDSON
*Registrar and Instructor
Bible and Theology*



RUTH JONES
*Instructor, Missions, History
English*



G. A. FRENCH
*Dean of Men, Director of Christian
Service Dept., Instructor, Bible and
Theology*



We as students at Saint Paul Bible Institute consider it a great privilege to be instructed by men and women who have consecrated their lives to the Lord's service. They are more than teachers; they are spiritual advisors—ones to whom we can go with our problems and receive sympathetic help.

Their main object is to send forth from our school, men and women rooted and grounded in the things of the Lord that they might fill their place adequately in the Lord's vineyard. It is with deep gratitude that we remember their unselfish service at St. Paul.



H. L. TURNER
*Vice-President and Dean, Director
of Bible and Theology Dept.*

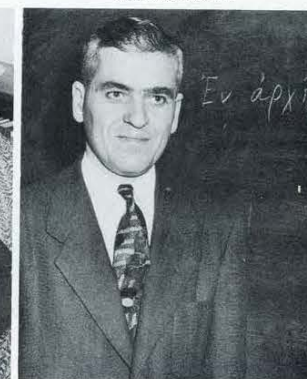
J. C. WENNINGER
*Instructor, Christian Education
Speech, Bible*



ADDIE B. RAINES
*Dean of Women, Instructor in
Christian Education*

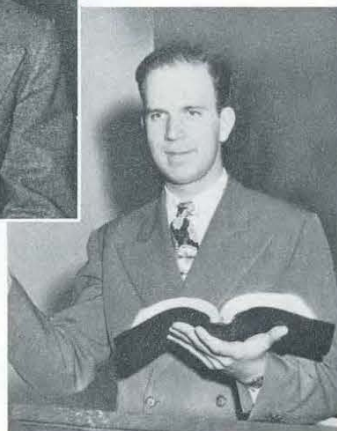


SAMUEL J. SCHULTZ
Instructor, Greek





IRVING PETERSON
Instructor, Bible



MARK LEE
Instructor, Homiletics



MARJORIE BOSTROM
Instructor, Spanish



ALICE LOCKWOOD
Librarian, Instructor in Christian Education



J. MERRILL TANNEHILL
*Director of Department of Music
Instructor, Music*



MAXINE TANNEHILL
Instructor, Instrument



LUCILLE MAXWELL
Instructor, Music



JANET KINDGREN
Instructor, Music



HAROLD BRUNDIN
Instructor, Voice

CHARLES ORTON SELVIG
Instructor, Piano and Organ



THEODORE BERGMAN
*Director, Department of Piano
and Organ*



B. S. KING
Treasurer
GENE RAMBO
Asst. Business Mgr.



HELEN LEMKE
Instructor, Child Evangelism

Not Pictured: PAUL GUNTHER, CARLOS DIEZ
Missions Spanish

STUDENT TEACHERS



MARGARET KULJIAN
Violin



R. ALLISON FLEGLE
Trumpet



MARVIN SWARTZ
Voice



BETTY KING
First Aid



Seated, left to right: Yvonne Heiden, Lydia Petrak, Ruth Thompson, Ethel A. Street, Cora Schultz, Mrs. Edna Teeter.



Lou Rahun, R. N.



Gladys Quaderer, Mrs. Irene Flegal, Leona Tieszen

Rev. and Mrs. Ira Root



STAFF

Throughout the year the school is kept running efficiently with the aid of this, our staff. Patiently they have filled their offices, and their lives have been a real blessing to all of us at St. Paul. We appreciate their labors and kind counsel as we have seen them doing it "unto the Lord".



SCHOOL BOARD

Standing: Rev. J. H. Woodward, Rev. H. P. Voth, Rev. C. D. Tieszen, Rev. J. A. Schmidt, Rev. V. Gowdy.
Seated: Rev. C. R. Thomas, Rev. B. King, Rev. R. P. House, Rev. G. D. Strohm.
Foreground: Rev. C. J. Mason, District Superintendent of Northwest District.

EXECUTIVE COMMITTEE

Rev. C. J. Mason, Supt., Rev. J. S. Rahn, Sec., Rev. L. W. Pippert, Treas., Rev. Warren Thompson, Rev. C. N. Pierce, Rev. L. A. Perkins, Rev. Howard Batdorf, Rev. Paul A. Kenyon, Rev. Keith Williams, Rev. Lowell Young, Rev. L. P. Hustad, Rev. George D. Strohm.



PREPARATION

O magnify the Lord with me, and let
us exalt His name together. Ps. 34:3.

Be Thou Exalted Senior Class Motto.



IN CLASSES





CLASS OFFICERS

William Lemke, *President*; Belva Flegle, *Vice-President*;
Ruth Johnston, *Secretary*; Richard Harvey, *Treasurer*;
Rev. S. W. Richardson, *Faculty Advisor*.

SENIORS



WILLARD ALDRICH
St. Paul, Minn.
Theology
Simpson Bible Institute,
Island World Prayer Band,
Shield Advertising Manager 3.

GERALDINE ANSON
Fremont, Nebraska
Missions
Africa Prayer Band.



ELDON BALDWIN
Minneapolis, Minnesota
Theology
Northwestern College,
French Indo-China Prayer Band,
Choral Club 1, 2, Band 1, 2.

ALVIN BALTZER
Alpena, South Dakota
Theology
American Indian Prayer Band.



ROY BARRETT
Atlanta, Georgia
Theology



LOIS BEECHER
St. Paul, Minnesota
Theology Degree
Hamline University,
Student Council 3,
Missionary Society Secretary 3.

EPHRIAM BIXLER
Swanton, Ohio
Missions
Island World Prayer Band



RHELINDA CALEY
St. Paul, Minn.
Missions
*Island World Prayer Band,
Tract Society 2.*



MARVIN CARR
Mason City, Iowa
Theology Degree
*Mason City Junior College,
Island World Prayer Band,
Class Treasurer 1, Choral Club 1, 2.*



JOSEPHINE CELLAR
Ashland, Ohio
Missions
*American Indian Prayer Band,
Tract Society 1.*



MARIE CLINTSMAN
Greenwood, Wisconsin
Christian Education
American Indian Prayer Band.



HAROLD SIGL
St. Paul, Minnesota
Theology



ROBERT CUTBIRTH
Fremont, Nebraska
Theology
*Midland College,
French Indo-China Prayer Band,
Missionary Society President 2,
Student Council 3,
World Missions Speaker 3.*



VIRGINIA DALY
Pasadena, California
Missions
*Simpson Bible Institute,
China Prayer Band,
Island World Prayer Band,
Shield Secretary 2.*



ROY DAVID
Coleman, Wisconsin
Missions
*World Prayer Band,
Island World Prayer Band,
Class Treasurer 2, Choral Club 1, 2, 3*



LYLE DENELSBECK
Canby, Minnesota
Missions
*Wycliffe Linguistic School,
South America Prayer Band.*

ROLAND DICK
Mountain Lake, Minnesota
Theology
*Home Missions Prayer Band,
Choral Club 1, 2, 3, Band 1, 2, 3.*



RICHARD DIEMER
Groveland, Illinois
Theology Degree
*Bradley University,
Missionary Society Treasurer 2,
Class President 2, Student Council 2.*



IONE DRIEMEYER
Tyler, Minnesota
Missions

CECIL EMMEL
Clearbrook, Minnesota
Theology
Home Missions Prayer Band.



BELVA JEAN FLEGLE (MRS.)
Du Bois, Pennsylvania
Music Degree
*Home Missions Prayer Band,
Choral Club 1, 2, 3, 4,
Shield Secretary 1, Band 3,
Class Vice President 4.*



RUTH FLOYD
Omaha, Nebraska
Missions
*Island World Prayer Band,
Choral Club 1, 2.*

FLAVEL FRENCH
St. Paul, Minnesota
Missions
American Indian Prayer Band.



MAXINE CORMLEY
Wenatchee, Washington
Music Degree
*Simpson Bible Institute,
Island World Prayer Band,
Choral Club 4.*

RICHARD HARVEY
Cable, Wisconsin
Theology Degree
*Wisconsin State Teachers College,
World Missions Prayer Band,
Missionary Society Curator 2,
Shield Treasurer 2,
Class Treasurer 3.*



IRENE HEARN
Hamilton, Ontario, Canada
Missions
*Prairie Bible Institute,
Africa Prayer Band.*



GERTRUDE HOFFMAN
Lincoln, Nebraska
Music
*U. of Nebraska,
Home Missions Prayer Band,
American Indian Prayer Band,
Orchestra 3.*

DeLOS HOLMES
Hubbard, Minnesota
Theology
Home Missions Prayer Band.



PHIL HOLT
Keenan, Texas
Theology
*Texas State Teachers College,
Island World Prayer Band.*



DAVID HUTCHINSON
Stillwater, Oklahoma
Theology Degree
*Island World Prayer Band,
Africa Prayer Band.*

JACOB JACOBSON
 Erie, Pennsylvania
 Theology
World Missions Prayer Band.



SHIRLEY JOHNSEN
 St. Paul, Minnesota
 Missions
Girls Choir 1, 2.



RUTH JOHNSON
 Lambert, Montana
 Music Degree
*Concordia College,
 Island World Prayer Band,
 Class Secretary 4, Shield Ass't Editor 4,
 Choral Club 2, 3, Band 2, 3,
 Orchestra 4.*



VIRGINIA JOHNSON
 St. Paul, Minnesota
 Missions



EUGENE JONES
 St. Paul, Minnesota
 Theology
*Bethel College,
 American Indian Prayer Band,
 Missionary Society Treasurer 1,
 Choral Club 1.*



THOMAS JONES
 Chicago, Illinois
 Missions
*Wycliffe Linguistic School,
 South America Prayer Band,
 Shield Sales Manager 1, 2,
 Choral Club 1.*



BYRON KOPP
 Minneapolis, Minnesota
 Missions
*Cornell University,
 Northwestern Bible School.*



DAVID LANDON
 Lincoln, Nebraska
 Theology
*U. of Nebraska,
 Africa Prayer Band,
 Tract Society President 2,
 Choral Club 1.*

GORDON LANGMADE
Anoka, Minnesota
Theology
South America Prayer Band.



LOIS LEE
Superior, Wisconsin
Missions
*China Prayer Band,
Girl's Choir 1, Choral Club 2, 3.*

WILLIAM LEMKE
Garner, Iowa
Theology
*Home Missions Prayer Band,
Class President 3, Student Council 3.*



ALLAN LESTER
Ottawa, Ontario, Canada
Theology
*South America Prayer Band,
Class Treasurer 1,
Choral Club 1, Band 1,
Missionary Society President 3.*



GEORGE MASON
Des Moines, Iowa
Missions
Missionary Training Institute.



JEANETTE MENTINK
Hammond, Wisconsin
Christian Education
China Prayer Band.



BONNIE MUMMA
Lincoln, Nebraska
Missions
*South America Prayer Band,
Girl's Choir 2, Choral Club 3.*



MELVIN NICKEL
Denmark, Wisconsin
Theology
South America Prayer Band.

RONALD OLSON
Minneapolis, Minnesota
Missions



LOREN PARKER
Des Moines, Iowa
Theology Degree
Moody Bible Institute
U. of Minnesota.

JUNE PEARSON
Carroll, Nebraska
Missions
*Nebraska State Teachers College,
China Prayer Band.*



BETTY PETERSON
Harlan, Iowa
Missions
Home Missions Prayer Band.



OLIVE PETERSON
Hager City, Wisconsin
Missions

SHIRLEY PIERCE
Oakland, California
Missions
*World Missions Prayer Band,
Choral Club 1,
Shield Secretary 3.*



KATHRYN POWELL
Redlands, California
Missions
*French Indo-China Prayer Band,
Girl's Choir 2, 3.*

LOUISE PUST
Sidney, Montana
Missions
*Nurses Training—R. N.,
South America Prayer Band,
Africa Prayer Band,
Girl's Choir 2, 3.*



WALDO PUST
Sidney, Montana
Missions
*South America Prayer Band,
Missionary Society Treasurer 2,
Shield Treasurer 2.*



LOU RABUN
Charleston, South Carolina
Missions
*Nurses Training—R. N.,
Home Missions Prayer Band,
Island World Prayer Band,
American Indian Prayer Band,
Missionary Society Curator 3.*



LLOYD REDIGER
Morton, Illinois
Theology
*Home Missions Prayer Band,
Choral Club 1, 2, 3, Band 3.*



DOUGLAS ROSTAD
Fargo, North Dakota
Theology
*South America Prayer Band,
Choral Club 1, 2, 3, Band 1, 2, 3.*



JANET RUSTHOVEN
Berwyn, Illinois
Christian Education
*American Indian Prayer Band,
Home Missions Prayer Band,
World Missions Prayer Band,
Girl's Choir 1, Choral Club 2, 3,
Missionary Society Vice-President 3.*



DORIS SEEGRAVES
Pontiac, Michigan
Missions
China Prayer Band.



IONE SMITH
Aberdeen, South Dakota
Missions Degree
*South Dakota State Teachers College,
Home Missions Prayer Band,
Class Vice-President 3.*



MERLE STOMBAUGH
Portage, Pennsylvania
Theology
*Island World Prayer Band,
World Missions Speaker 2.*

JAMES STONE
Eilwood City, Pennsylvania
Theology



CARROLL STROSHINE
Toledo, Ohio
Missions
*Island World Prayer Band,
Tract Society 1, 3.*



ARLENE SWANSON
Lambert, Montana
Missions
*Island World Prayer Band,
South America Prayer Band,
Choral Club 1, 2, Band 2,
Shield Missionary Editor 3.*



SHIRLEY SWANSON
Lambert, Montana
Music Degree
*Island World Prayer Band,
Band 1, 2, 3, Choral Club 1, 2, 3, 4.*



JUNE SYDOW
Hines, Minnesota
Missions
Island World Prayer Band.



MARTHA TAYNOR
Swanton, Ohio
Missions
*Ft. Wayne Bible Institute,
Africa Prayer Band.*



GEORGE THOMPSON
Remer, Minnesota
Theology
American Indian Prayer Band.



LUELLA TOEWS
Mountain Lake, Minnesota
Missions
*Africa Prayer Band,
Missionary Society Secretary 2,
Girl's Choir 1, 2, 3.*

EILEEN VANDER PLOEG
Orange City, Iowa
Music Degree
*Island World Prayer Band,
Home Missions Prayer Band,
Band 1, 2, 3, Choral Club 1, 2, 3, 4,
Class Vice-President 3.*



HERMAN VAN SCHOOTEN
Princeton, Nebraska
Missions
Island World Prayer Band.



MALVIN VAN SCHOOTEN
Princeton, Nebraska
Theology
*Home Missions Prayer Band,
Island World Prayer Band,
Tract Society 2, Class Treasurer 2.*



DORIS VAN STONE (MRS.)
Oakland, California
Missions
*California College of Arts and Crafts,
Island World Prayer Band,
World Missions Speaker 1,
Shield Art Editor 1,
Shield Editor-in-Chief 2,
Student Council 2.*



LLOYD VAN STONE
Houston, Texas
Missions
*Island World Prayer Band,
World Missions Speaker 1,
Tract Society 1, Class President 1,
Student Council 2,
Missionary Society President 2.*



FLORENCE VOTH
Mountain Lake, Minnesota
Missions
*Africa Prayer Band,
Band 1, 2, Choral Club 1, 2, 3.*



RUTH WALLIN
Berwyn, Illinois
Missions
*China Prayer Band,
French Indo-China Prayer Band,
Girl's Choir 1, Choral Club 2, 3.*



CLAIRE WESTFALL (MRS.)
Detroit, Michigan
Missions
*India Prayer Band,
French Indo-China Prayer Band,
Choral Club 1, 2, 3,
World Missions Speaker 2.*

ELSIE WIDMAN
De Smet, South Dakota
Missions
South America Prayer Band.



ANN WIEBE
Mountain Lake, Minnesota
Missions
*Norfolk Junior College,
Goshen College,
South America Prayer Band,
Choral Club 1, 2.*

MURIEL WOODWARD
Orange City, Iowa
Missions
*Ft. Wayne Bible Institute,
Island World Prayer Band,
Choral Club 3,
World Missions Speaker 3.*



BETTY ZUMHINGST
Wauneta, Nebraska
Missions Degree
*U. of Nebraska,
World Missions Prayer Band,
Africa Prayer Band,
Shield Ass't Sales Manager 1,
Girl's Choir 1, 2,
Missionary Society Vice-President 2,
Class Secretary 2,
World Missions Speaker 3.*

JUNIORS

CLASS OFFICERS

Kenneth Christensen, *President*; Margaret Johnson,
V. President; Ethel Carlson, *Secretary*; Leona
Fast, *Treasurer*; Rev. G. French, *Faculty Advisor*.



JOSIE ACKELSON
Missions Degree

EVELYN ANDERSON
Missions

KATHERINE ANDERSON
Missions

LE ROY ANSON
Theology



STEPHEN BENDER
Theology

LAWRENCE BERGE
Missions

RUTH BLACK
Missions

MARY ELLEN BOLAR
Christian Education



CURTIS BUNNEY
Missions Degree

CAROL BYRAM
Christian Education

ETHEL CARLSON
Missions

MILDRED CARTER
Missions



GORDON ARNEBERG
Theology

WILLIAM ARVAN
Missions

MARY LEE BALLARD
Missions

SELMA BALTZER
Missions

LEONARD BRALEY
Theology

EUGENE BREID
Theology

GRAYCE BROADWELL
Missions

ELDEN BROWN
Missions



HARRY CRISMAN
Theology

GERHARD DANIELSON
Theology

ERVIN DeBOER
Theology

FRANCES DECKER
Theology

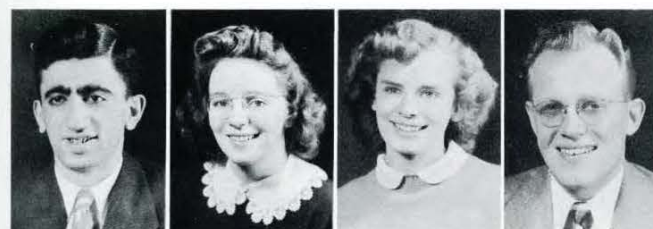


WILLIAM EASTERLING
Theology

CLARICE ELY
Missions

SHIRLEY EMMEL
Missions

JAMES ESCHENBRENNER
Theology Degree



KENNETH CHRISTENSEN
Theology

MARLES CLEGG
Music

ROY COMSTOCK
Theology

DONALD COUCH
Theology

KENNETH DOBSON
Theology

CONRAD DONALD
Theology

JOHN DUDLEY
Missions

WAYNE EAMES
Missions

JOHN EUMURIAN
Theology Degree

ELEANOR EVANS
Missions

LEONA FAST
Missions

RICHARD FLEGLE
Music Degree

STANLEY FOCHT
Missions

VIOLET FRANZKE
Theology

MELVIN FULLER
Missions

CLARK GARDNER
Theology



VIRGINIA GILCHRIST
Missions

MARGARET GRAHAM
Missions

CLARENCE GRANDY
Christian Workers

GENE GRAVES
Missions



VIOLA GUNN
Missions

DAVID HADLEY
Missions Degree

CHARLES HALLOCK
Theology

ROBERT HANNA
Christian Workers



JAMES HOGAN
Missions

RUTH HOGAN
Missions

LOWELL HOLMGREN
Theology

AUDREY HUGHES
Missions



MARVEL HUGHES
Music Degree

MARY IRWIN
Theology

KENNETH JACOBS
Missions Degree

VIOLA JOHNSON
Theology



ANNE JOHNSTON
Missions

MARGARET JOHNSTON
Missions

BERNICE JONES
Missions

MARY HELEN JORGENSEN
(Mrs.)
Missions

WILBUR JORGENSEN
Missions

MILDRED KNISS
Missions

LLOYD KNOUF
Missions

VIOLA KOOY
Missions



ROY KULJIAN
Theology Degree

LENORE KYLE
Christian Education

JOAN LEE
Music Degree

LEO LEEDER
Missions Degree



RUTH LINDBURG
Missions

EILEEN LUND
Christian Education

BARBARA McEUN
Christian Education

JAMES McFADDEN
Missions



FRANCES McINTYRE
Music Degree

FRANK McLAUGHLIN
Theology

ELAINE MADSEN
Music Degree

DOROTHY MARVIN
Christian Education



DONA MEDCHILL
Missions

VERA MELTZER
Missions

HELEN MONREAN
Missions

LORRAINE NELSON
Christian Education



ROYCE REXILIUS
Missions

MARY RICHARDSON
Missions

ROSWELL ROOT
Missions

NORIE NE ROWE
Christian Education



RICHARD OLSON
Theology

JUNE PRICE
Missions

RODERICK PURVIANCE
Missions

EARL QUESNELL
Missions



ELAINE SALTWICK
Missions

ROSZELLA SCHULTZ
Christian Education

JUNE SHIVELY
Missions

DIANNE SHUEY
Missions

FORREST SLANE
Missions

ADA STEELE
Missions

LOIS STERNEMAN
Music Degree

DONNA LEE STRANDBERG
Music Degree



WILMA JEAN STROBRIDGE
Missions

GORDON SWANSON
Theology

ROBERT SWANSON
Theology

MARVIN SWARTZ
Music Degree

VERNA THIESSEN
Missions

JAMES THOMPSON
Theology

PEARL TIMBLIN
Missions

VERN ULANDER
Theology



JACK WAITE
Missions

SHIRLEY WAITE (Mrs.)
Missions

GLENN WALDON
Theology

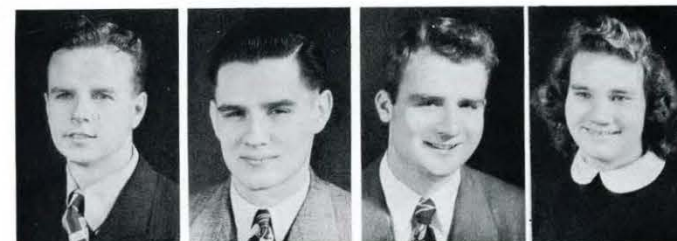
LENORA WALDON (Mrs.)
Music Degree

DRENNEN WATTS
Missions

GENE WENDT
Theology

PAUL WESTFALL
Missions

DOROTHY WILLIAMS
Missions



RUTH WOOD
Theology

CHARLES WRIGHT
Missions

Not pictured:
ROBERT COHEN
Theology

OPAL ELDRED
Missions

MERLYN JOHNSEN
Missions

Courtesy St. Paul Dispatch-Pioneer Press



MISSIONARY NEWS

St. Paul again farewells former students on their way to the foreign fields.

Mr. and Mrs. Paul Davis, Paul Jr. and Sylvia Dawn wave goodbye from the Union Depot as they depart for Siam and later on to China if conditions allow. Mr. Davis graduated in 1948.



Courtesy St. Paul Dispatch-Pioneer Press

January 15 found two missionaries busily packing for their adopted lands. Miss Bostrum, shown left, is returning to Colombia, South America, and Vonnie Morscheck will begin work in Indonesia. Assisting them is Rev. Colver J. Mason, District Superintendent.

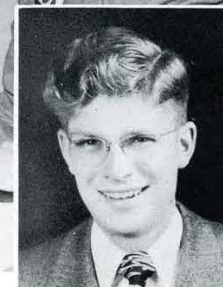
Miss Miriam Cain, graduate of 1947, has been working in the New York Office of the C. & M. A. Miss Cain has been appointed to French West Africa and plans to sail in March of this year.



FRESHMEN

CLASS OFFICERS

Edward Jenkins, *President*; Marie Pippert, *Vice-President*; Ramona Gibbs, *Secretary*; Jay Rushoven, *Treasurer*; Rev. J. C. Wenninger, *Faculty Advisor*.





MARY ALLEN Missions
DORIS ANDERSON Christian Education
LAMBERT ANDERSON Theology
RUTH ANDERSON Missions
DONALD ANDREW Theology
BETTY BAKER Missions



HERBERT BAKER Theology
JOYCE BALDWIN Christian Education
FRANKLIN BELL Theology
RICHARD BENNETT Missions
RUTH BERGE Christian Education
DARLENE BJORK Music Degree



VIOLA BJORK Christian Education
HARLAND BRASK Missions
MARGARET BRIGGS Christian Education
DONALD BROWN Theology
RHODA BRYAN Music Degree
LELIA BRYNSVOLD Christian Education



FLORENCE BURGER Missions
BONNIE BURNETT Missions
NELSON CAIRL Music Degree
ELBERT CEARFOSS Theology



CAROL CHADDERDON Music Degree
HARRIET CHADWICK Christian Education
DORIS CHRISTIE Missions
CLAIRE CHRISTOPHERSON Missions
AUDREY CLARK Christian Education
LESLIE CROSS Theology



CHARLOTTE DAGGETT Music Degree
ELEANOR DAHLSTROM Missions
ROBERT DAVIS Theology
CHARLES DICKINSON Theology
BETTY DOBEL Missions
HAROLD DONIS Theology



KATHLEEN DONIS (Mrs.) Missions
MARIE DRAKE Music Degree
ROBERT DUSCH Theology
MARIE ELDRED Missions
CHARLES ERICKSON Theology
DONALD J. ERICKSON Christian Education



DONALD J. A. ERICKSON Theology Degree
ROSALEE FEATHERS Missions
BERNARD FLEGAL Theology
RONALD FLETCHER Theology



JACQUELINE FORD
Missions



JOHN FROST
Christian Education



STILLMAN GASKINS
Theology



RAMONA GIBBS
Music Degree



RENA GREENBERG
Missions



EVELYN GUNTHER
Missions



MILBERT HAAR
Christian Workers



ROBERT HAHN
Missions



SHIRLEY HAHN (Mrs.)
Missions



ALFRED HAMM
Theology



MIRIAM HARDY
Christian Education



JACQUELINE HARRIS
Christian Education



CHESTER HAY
Theology



GUY HORNER
Missions



DOLORES HULA
Christian Education



EDWARD JENKINS
Music Degree



LEON JENSEN
Theology



HARVEY JOHNSON
Missions



HELEN JOHNSON
Christian Education



LLOYD JOHNSON
Missions



MARCELLA JOHNSON
Missions



MERRILYN JOHNSTON
Missions



DAVID JONES
Theology



DONALD JORDAHL
Missions



STELLA KEEN
Christian Education



BETTY KING
Missions



ALICE KLEMPSEL
Christian Education



ESTHER KOBUS
Christian Education



ORVILLE KOOL
Theology



ISABELL LONGSTREET
Christian Education



DONALD McDANIEL
Theology



NEIL McDOWELL
Missions



RICHARD McLAUGHLIN
Theology



GRANT McMAHON
Missions



KATHRYN MANLOVE
Christian Education



RUBEN MARTIN
Theology



ELINOR MILLER
Christian Education



EVELYN MILLER
Missions



FLORENCE MILLER
Christian Education



MARILYN MOREHOUSE
Christian Education



KENNETH MORGAN
Christian Workers



ANNABELL NEUMAN
Missions



EILEEN OHS
Missions



PAUL OLSON
Theology



HAROLD OSBORN
Theology



VIOLET OTTO
Christian Education



HARRY OW CZARCK
Theology



VALERIE PALMQUIST
Christian Education



EDGAR PARKER
Theology



GLENNA PARTRIDGE
Music Degree



BETTY PAULSON
Christian Education



RACHEL PEATEE
Missions



JOANNE PETERSON
Christian Education



NOVA PETERSON
Music Degree



CHARLOTTE PETRAK
Christian Education



MARIE PIPPERT
Missions



FOREST PLUMB
Missions



ALICE JUNE PORTER
Missions



NORMAN REDIGER
Theology



ROLAND REED
Missions



BETTY REXILIUS
Missions



JO ANN RITENOUR
Missions



ALVINA RITTEL
Missions



JIMMIE ROBERTS
Theology



KENNARD ROBINSON
Missions



JEANNETTE ROGERS
Christian Education



ELAINE ROOT
Missions



JAY RUSTHOVEN
Missions



MILDRED SCHMIDT
Christian Education



RUTH SCHUTZ
Christian Education



GENE SIEVERT
Theology



JOHN SILVEY
Missions



EILEEN SIMPSON
Music Degree



MARY JAYNE SLANE
Missions



HAROLD STOESZ
Theology



MELVIN STOMBAUGH
Theology



COLLEEN SWANSON
Missions



GERALD SWANSON
Missions



HARLAN SWANSON
Missions



MAVIS SWENSON
Christian Education



GEORGE SWINEY
Theology



REX TALMAGE
Missions



JEANINE TAYLOR
Missions



ALICE THOMAS
Christian Education



MEREDITH THOMAS
Theology



MARGARET TIMMONS
Christian Education



JACK TIMMS
Theology



WILLARD TOEWS
Missions



ALVIN VAN SCHOOTEN
Missions



GLORIA VONG
Christian Education



VERNON VOTH
Theology Degree



MARGARET WARNER
Missions



MARIAN WARNER
Christian Education



HOWARD WARRICK
Missions



HARRISON WEAVER
Missions



DOROTHY WEST
Missions



MILDRED WEST
Missions



CLARA JANE WHIPPLE
Missions



LEE WHITE
Missions



LINTON WHITE
Christian Workers



LOREN WIESE
Music Degree



DONALD WILLOUGHBY
Missions



THELMA WOLTERS
Missions



ALDA WOOD
Missions



ALBERT WRIGHT
Missions



FRED YEARSLEY
Missions

Not Pictured:
PAUL WATTS
Theology



HENRY CALEY



MARY DUDLEY
(Mrs.)



FLORENCE FOCHT
(Mrs.)



KATHRYN GERDIN



ELAINE JACOBS
(Mrs.)



MARGARET KULJIAN
(Mrs.)



MILDRED LEEDER
(Mrs.)



HERBERT LUHN



GLENNIS OSBORN
(Mrs.)



HARRIET PETERSON



ROBERT THOMSON

SPECIAL



BONNIE WATTS
(Mrs.)



MILO WELK

STUDENTS



Standing (left to right): Woodson Eumurian, Richard Thomas, Clinton Johnson, Lawrence Palmquist, Peter Rusthoven, Helen Johnston, Dorothy Mae Gould, Mildred Sigl (Mrs.), Doris Brandt.
Seated: Myrtle McDowell (Mrs.), Peggy Jenkins (Mrs.), Beth Eumurian (Mrs.), Svea Anderson, Berneda Peterson.
Not Pictured: Isabelle Black, Ruby Danielson (Mrs.), Max DeArmey, Thelma DeVries, Frances Dickinson (Mrs.), June Hainlen (Mrs.), Edward Horst, Doris Johnson, Winfield Swanson, Esther Welk (Mrs.), Mildred Williams.



SECOND SEMESTER STUDENTS



THANKSGIVING AT ST. PAUL

Although many hearts turned homeward and relived other Thanksgivings, an endeavor to make St. Paul a little more like home was realized at this time.

We were humbled at God's goodness to us and thanked Him for sending us to St. Paul to enjoy His blessings not only materially but spiritually.

DAY IN SCHOOL

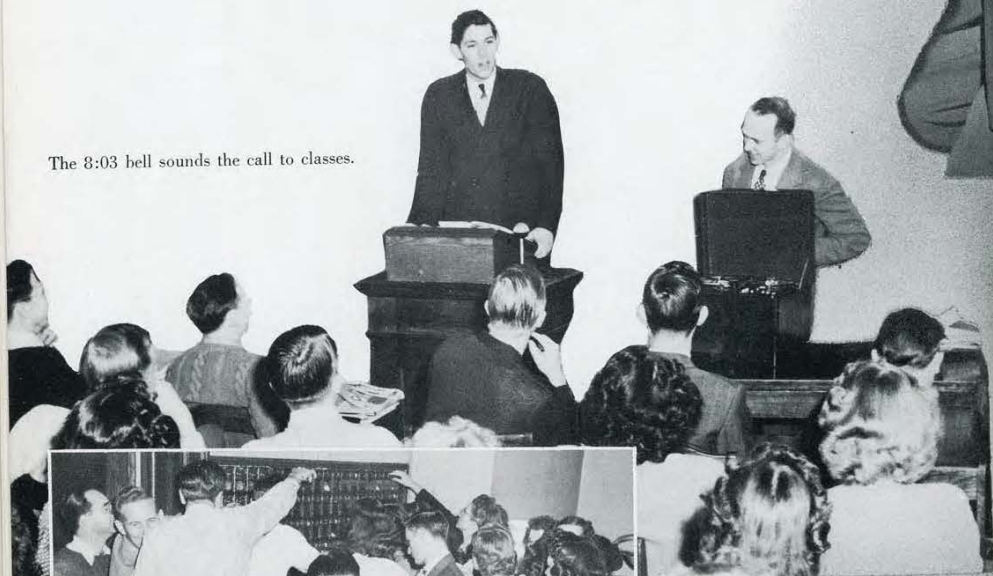


GET UP, you intellectuals—a new day dawns!

Spiritual food before breakfast. A quiet time with the Lord begins the day right.



The 8:03 bell sounds the call to classes.



Bright spot in every day—the 11 o'clock mail crush!

DAY IN SCHOOL



"STUDY TO SHOW THYSELF APPROVED UNTO GOD."



WE EAT!!

"Take Time to be Holy." The traditional introduction to the 10 o'clock Quiet Hour.



LIGHTS OUT !!





Seated (left to right): Jeannette Rogers, Lois Beecher, Rev. H. L. Turner (Advisor), Katherine Anderson, Earl Quisnell.
Standing: Kenneth Christenson, William Lemke (Chairman), Elbert Cearfoss, Robert Cutbirth.

STUDENT COUNCIL

The Student Council seeks to maintain a good relationship between the faculty and student body. Above all, they seek to maintain a high spiritual norm in the Institute family.



Student Council projects on the campus.



CAMPUS DAY MEMORIES



Studies are laid aside by all students as they unite their energies to aid the school in taking on new life on clean-up day!



CHRISTIAN SERVICE ASSIGNMENTS

Through the Christian Service Department, students gain practical experience in presenting the Gospel through hospital visitations, mission work, young people's groups and church organizations. Approximately 175 students are sent out each week to use the talents God has given them to reach lost souls for Him. Pictured here is a typical assignment.



Wednesday brings forth instructions for the week-end assignments.



Vonnie posts the assignment sheets.



Giving out the Message through song, prayer and testimony.



Results are recorded in the Christian Service Office.

Working hand in hand with the Christian Service Department, the Missionary League is in constant demand throughout the Northwest District. Many week ends are given to services, stressing a Missionary challenge.



Week ends also find another busy group ministering in churches throughout Minnesota and Wisconsin. Mr. French and these talented young people have been a challenge and blessing to many.



The tract society works behind the scenes doing their service of love as "unto the Lord." They deserve our hearty thanks for their cheerful labour.

PREPARATIO



Rejoice in the Lord, O ye righteous: for praise is
comely for the upright.

Sing unto him a new song; play skillfully with a loud
noise. Ps. 33:1,3.

MIN MUSIC





Music students delve into the analysis of composition. "Ternary form—Part III—Recapitulation"!



Ramona offers a bit of help with a harmony progression.



Genius burns. Who knows what a Choir Conducting class will bring forth.



Prof. J. Merrill Tannehill
Director, Department of Music

The Department of Music seeks to combine the highest standards of musical education with the spiritual emphasis of a Christian School.

Music theory and practical training are provided not only to the degree students, but to all who are seeking to develop an understanding of music as a part of Christian education.

Practical application. Trailer-town youngsters become the obliging victims of the pedagogy class.

QUIET—Seniors (at work). The final manuscript has to be perfect—and it isn't easy.





"All for Jesus, All for Jesus". With this refrain on their lips, the Girl's Choir challenges young people in the St. Paul area to walk close to the Lord and to find out His will for their lives.

Miss Lucille Maxwell, the capable director of this group, leads in the spiritual emphasis that makes this Choir unique in its musical ministry.

GIRLS CHOIR

Front Row (left to right): Rosalee Feathers, Eileen Simpson, Lenore Kyle, Dolores Hula, Luella Toews, Miss Maxwell, Director.
 Second Row: Nova Peterson, June Price, Marlys Clegg, Opal Eldred, Mary Ellen Bolar, Gloria Vang, Dorothy Marvin, Lois Sternaman.
 Third Row: Dona Medchill, Violet Franke, Ruth Wood, Mildred West, Margaret Warner, Alice Thomas, Catherine Anderson.
 Fourth Row: Ramona Gibbs, Marie Pippert, Valerie Palmquist, Marjorie Hardy, Marian Warner, Charlotte Petrak, Audrey Hughes, Violet Otto.
 Fifth Row: Katherine Powell, Frances Decker, Bonnie Burnett, Marie Eldred, Marilyn Morehouse, Verna Theissen, Betty Baker.



This group of artists and amateurs alike find pleasure in meeting together under the direction of Miss Lucille Maxwell. Many a Friday night meal has been made more pleasant through their efforts.



ORCHESTRA

Front Row: Roy Kuljian, Jeannette Rogers, Margaret Kuljian, Eileen Vander Ploeg, Bonnie Burnett.
 Second Row: Ruth Johnson, Grayce Broadwell, Maxine Gormley, Shirley Swanson, Alice Lockwood, Nelson Cairl, Lowell Holmgren, Arlene Swanson, Ruth Black.
 Standing: Lucille Maxwell, Director; Francis McIntyre, Pianist.





CHORAL CLUB

The Institute proudly presents this talented group that has gained recognition in Christian realms both in the United States and Canada. They not only represent musical perfection, but they emphasize a spiritual ministry. Their main objective is to present Christ through their music and testimonies that young people might realize the transforming power of the cross. Many have thrilled to their group testimony presented in their theme song, "Let the Beauty of Jesus be Seen in Me."

ITINERARY

NOVEMBER	PLACE	CITY
6	High School Auditorium.....	Barron, Wisc.
25	Armory.....	Park Rapids, Minn.
26	Central High School.....	Superior, Wisc.
27	Denfeld High School.....	Duluth, Minn.
28	High School Auditorium.....	Hibbing, Minn.
DECEMBER		
5	High School Auditorium.....	Austin, Minn.
JANUARY		
12	Salvation Army.....	Minneapolis, Minn.
13	N.A.E. (Temple Baptist)	St. Paul, Minn.
30	Alliance Church.....	Minneapolis, Minn.
FEBRUARY		
13	Park Ave. Methodist Church.....	Minneapolis, Minn.
19	Memorial Auditorium.....	Willmar, Minn.
20	High School Auditorium.....	Paynesville, Minn.
22	World Missions Night, Auditorium St. Paul, Minn.	
MARCH		
5	World Missions Night, Denfeld Hi.....	Duluth, Minn.
11	High School Auditorium.....	Charles City, Iowa
12	Hoyt Sherman Auditorium.....	Des Moines, Iowa
13	Midway Tabernacle.....	Boone, Iowa
13	High School Auditorium.....	Mason City, Iowa
17	Lincoln High School.....	Mankato, Minn.
18	Town Hall.....	Orange City, Iowa
19	Central High School.....	Sioux City, Iowa
20	Evangelical Church.....	Hinton, Iowa
20	High School Auditorium.....	Mountain Lake, Minn.
27	Broadway Covenant Church.....	Minneapolis, Minn.
APRIL		
3	Simpson Church.....	St. Paul, Minn.
5	Presbyterian Gymnasium.....	Oconto, Wisc.
6	High School Auditorium.....	Pound, Wisc.
7	High School Auditorium.....	Appleton, Wisc.
8	Auditorium.....	Milwaukee, Wisc.
9	Seaman Hall.....	Gary, Ind.
10	Alliance Church, N.S.....	Chicago, Ill.
10	Alliance Church, S.S.....	Chicago, Ill.
11	Alliance Church.....	Westmont, Ill.
12	First Baptist Church.....	Hammond, Ind.
13	Armory.....	Galesburg, Ill.
14	High School Auditorium.....	Dixon, Ill.
15	High School Auditorium.....	Kenosha, Ill.
16	Chicagoand Youth for Christ.....	Chicago, Ill.
17	Shrine Auditorium.....	Rockford, Ill.
23	High School Auditorium.....	Robbinsdale, Minn.
MAY		
1	First Baptist Church.....	Minneapolis, Minn.
7	Municipal Auditorium.....	St. Paul, Minn.
8	High School Auditorium.....	Marshall, Minn.
8	Armory.....	Redwood Falls, Minn.
14	Youth for Christ.....	Minneapolis, Minn.
JUNE		
1	Annual Musicales, Simpson Church.....	St. Paul, Minn.
6	Municipal Auditorium.....	Wadena, Minn.
7	High School Auditorium.....	Fergus Falls, Minn.
8	High School Auditorium.....	Fargo, N. D.
9	High School Auditorium.....	Thief River, Minn.
10	High School Auditorium.....	Devils Lake, N. D.
11	High School Auditorium.....	Sidney, Mont.
12	High School Auditorium.....	Wolf Point, Mont.
13	Municipal Auditorium.....	Malta, Mont.
14	High School Auditorium.....	Manhattan, Mont.
15	High School Auditorium.....	Bozeman, Mont.
16	Yellowstone National Park.....	Montana
17	High School Auditorium.....	Billings, Mont.
18	High School Auditorium.....	Glendive, Mont.
19	Municipal Auditorium.....	Pierre, S. D.
20	Corn Palace.....	Mitchell, S. D.
21	High School Auditorium.....	Jamestown, N. D.
22	Municipal Auditorium.....	Aberdeen, S. D.

PREPARATION

GIVE ME A BURDEN

Lord give me a vision of heathen beyond
Dying in sin and dark shame.
Crying in anguish, in fear, and in pain: they are
Waiting to hear of Thy Name.

Lord give me a passion to carry Thy love
To millions across the sea.
Straying in blindness, yes, lost in the night
Until they are told of thee.

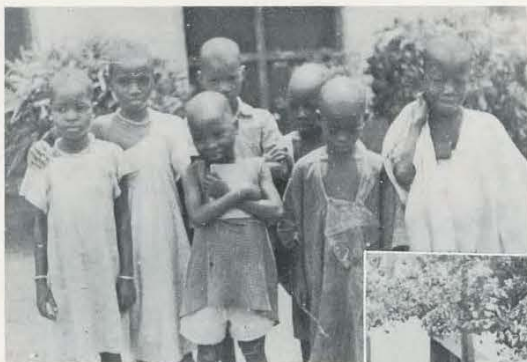
Lord, give me a burden for souls lost in sin
Swiftly they each pass away.
Someone should tell them, must tell them of Thee
While yet there is time in the day.

Marjorie Dingman.



IN MISSIONS





Africa



PRAYER BAND

Forrest Slane, President
 Betty Zumhingt, Vice President
 Bernice Jones, Secretary
 Ervin De Boer, Treasurer
 Ruth Anderson
 Geraldine Anson
 Mary Lee Ballard
 Mildred Carter
 Charles Erickson
 David Hutchison
 David Landon
 De Wayne Miller
 Roderick Purviance
 Dianne Shuey
 John Silvey
 Mary Jane Slane
 Harold Stoesz

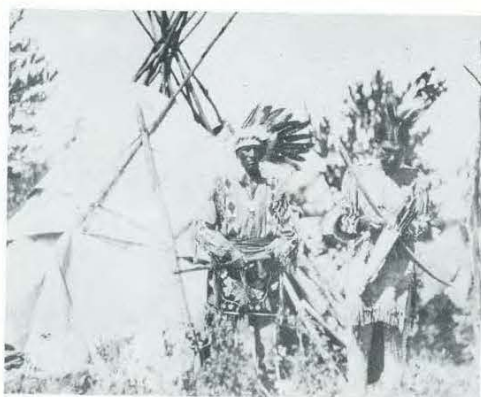
"You don't see real Africa until you see French Equatorial Africa, far inland from the coast where the tall elephant grass grows. Here and there along the trails we saw a native village where the missionaries lived in mud huts. Nearly all the witch doctors were working their charms to try to get rid of the missionaries. Many natives were subject to demon possession.

"Deacons of the African Church came to the missionary and said, 'White man, we have a hard time sleeping at night because people are so concerned about their souls, that they come knocking at our door at any hour of the night weeping and wanting to be saved.'"

Rev. Richard Paulson
 Chapel, January 7, 1949

Darkened—slaves to sin!





Home Missions

PRAYER BAND

William Lemke, President
Joan Lee, Vice President
Jeanette Rogers, Secretary
Robert Hanna, Treasurer

Henry Caley
Roland Dick
William Easterling
Belva Flegle (Mrs.)
Richard Flegle
Jacqueline Ford
Virginia Gilchrist
Alfred Hamm
Mariam Hardy
Dolores Hula
Leon Jensen

Anne Johnston
Donald Jordahl
Isabell Longstreet
Grant McMahon
Marilyn Morehouse
Kenneth Morgan
Betty Lou Paulson
Lloyd Rediger
Norman Rediger
Jimmie Roberts

Gene Sievert
Ione Smith
Lois Sterneman
Melvin Stombaugh
Mavis Swenson
Pearl Timblin
Gloria Vong
Fred Yearsley
Glenn Waldon
Lenora Waldon (Mrs.)



"The American Indians are bitter. They are suspicious. They're hard to reach. They are expecting to be cheated. That's about all they've received from the hands of the white man. One hundred miles from St. Paul there are structures where animals have been sacrificed this year. May God pour into our hearts a love for a most unloved people."

Rev. George French
October 22, 1948

American Indian

PRAYER BAND

Clark Gardner, President
Lou Rabun, Vice-President
Evelyn Anderson, Secretary
Lowell Holmgren, Treasurer

Lambert Anderson
LeRoy Anson
Betty Baker
Selma Baltzer
Alvin Baltzer
Viola Bjork
Leila Brynsvold
Bonnie Burnett
Josephine Cellar
Marie Clintsman
K. D. Dobson
Robert Davis
Eleanor Evans

Donald J. A. Erickson
Jack Frost
Rosa Lee Feathers
Ramona Gibbs
Charles Hallock
Orville Kool
David Landon
Kathryn Manlove
Dan McLaughlin
Harry J. Owczarek
Harriet Petersen
Forest Plumb
Jeanine Taylor



Neglected peoples of our land.



Luverne Winch



Belle Thompson
Anna Sontra



Edna Peabody

Lois Wood



Pauline Wetzel



China

PRAYER BAND

Charles Wright, President; Ruth Black, Vice-President; June Shively, Secretary; Donald McDaniel, Treasurer; LeRoy Anson, Richard Bennett, Grayce Broadwell, Donald Couch, Virginia Daly, Mary Irwin, Lois Lee, June Pearson, Alvina Rittel, Doris Seegraves, Eileen Simpson, Colleen Swanson.

Rev. Marcus Cheng
Nov. 12, 1948

"Within the last two years we have established five churches at Chungking. The prisons have been a great harvest field. In one month, more than one hundred of these wicked men accepted Christ as their Savior. They then organized their own church, elected their own deacons, and one hundred asked to be baptized. After they were examined, forty-two were chosen. The first one chosen was the jail keeper. Among those baptized were thirteen murderers, nine opium smokers, and six bandits. 'A great door and effectual is open' in China."

Rev. Andrew Gih
President China Y.F.C.

"205,000,000 Chinese have never heard the name of Jesus. They have not had a chance to accept Christ. My people are suffering. Won't you please come over and help us?"



Rev. and Mrs. Robert Sjoblom

Burdened lives and sin-weary hearts.



PRAYER BAND

Paul Westfall, President
Kathryn Powell, Vice President
Mary Allen, Secretary
Gerald Swanson, Treasurer
Rhoda Bryan
Doris Christie
Robert Cutbirth
Margaret Graham
Rachel Peatee
Roland Reed
Ruth Wallin
Claire Westfall



Rev. and Mrs. Marvin Martin

Rev. and Mrs. Paul Johnson and family

French Indo-China and Siam

Rev. Paul Johnson
Alliance Weekly
February 5, 1949

"Our need for help is great! Our field in East Siam has the third largest population of our Alliance fields, being exceeded only by South China and French Indo-China. We have more uncivilized people for each individual missionary to reach than any other Alliance field!"

"Out here in East Siam approximately six million, six hundred and fifteen thousand people are going to a Christless eternity. As you read and think of these things, do you think it a "waste of time" to stop and intercede, to send forth the gospel, to spend your life here for Christ and the unreached millions? "Is it nothing to you, all ye that pass by?"

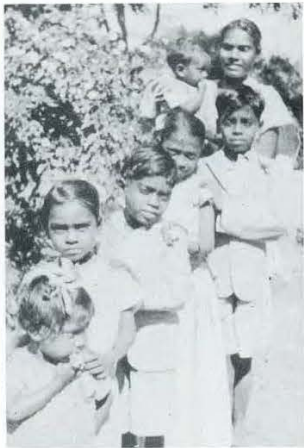


Rev. & Mrs. Harvey Boese
and daughter



Stella Ratzloff

War-torn millions unreached



India

PRAYER BAND

Elbert Cearfoss, President
 Ruth Wood, Vice-President
 Josie Ackelson, Secretary
 Harrison Weaver, Treasurer
 Melvin Fuller
 Marcella Johnson
 Viola Johnson
 Frances McIntyre
 Roswell Root
 Clara Jane Whipple



"There are castes in India. One of the castes is a robber caste. . .
 It is horrible to walk along the road and see the idols and the shrines. Of course, there are beautiful temples and there is a philosophy to their religion but the Indian villager, the common Indian native, does not know the philosophy of his religion . . . he only knows the religion of idols.

The gospel is functioning. The gospel is producing. The gospel is bringing forth. Each of us can have a part in the missionary program of India through intercessory prayer and by the giving of our gifts."

Rev. W. F. Smalley,
 Chapel Speaker



Confused multitudes despairing — without hope.



PRAYER BAND

Island World

Alvin Van Schooten, President; Margaret Johnston, Vice President; Betty King, Secretary; Conrad Donald, Treasurer; Katherine Anderson, Ephraim Bixler, Leila Brynsvold, Rhelinda Caley, Roy David, Opal Eldred, Maxine Gormley, Phil Holt, Lloyd Knouf, Viola Kooy, Leo Leeder, June Price, Merle Stombaugh, Carroll Strohshine, Shirley Swanson, June Sydow, Alice Thomas, Doris Van Stone, Lloyd Van Stone, Margaret Warner, Muriel Woodward.

New Guinea, the second largest island in the world, is almost untouched by the gospel light. The inhabitants of this great island are darkened and enslaved by sin. There is little response to the gospel, little realization of sin. Sin and heathenism are at their worst.

Borneo, the island of the head hunter, presents a brighter picture. The Dyaks are receiving the gospel and fetters of sin are being broken. Borneo is probably the most promising missionary field of today. Yet we must add that the laborers are pitifully few.

There are dense tropical forests to penetrate, raging rapids to shoot. The missionary is at the mercy of the natives but protected by an Almighty God. Does the Lord need you?



Maxine Immer



Mr. & Mrs. Lloyd Skellie



Imprisoned by fear and superstition



South America

PRAYER BAND



James McFadden, President; Leona Fast, Vice-President; Ruth Lindberg, Secretary; Roy Comstock, Treasurer; Ruth Berge, Darlene Bjork, Lyle Denelsbeck, Ione Driemeyer, Shirley Emmel, Violet Franzke, Viola Gunn, David Hadley, Robert Hahn, Shirley Hahn, Jim Hogan, Guy Horner, David Jones, Doris Jones, Thomas Jones, Mary Helen Jorgenson, Wilbur Jorgenson, Elinor Miller, Bonnie Mumma, Annabelle Neuman, Melvin Nickel, Lawrence Palmquist, Marie Pippert, Waldo Pust, Jo Ann Ritenour, Ruth Schutz, Wilma Strobbridge, Arlene Swanson, Dorothy Williams.

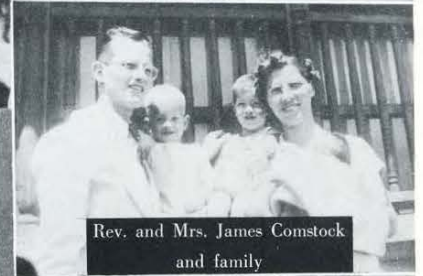


Up the river they went where no missionary had ever been. They arrived at the point where they were to begin their missionary labors. Their work began. During the day they cleared land, started to build a home, and tried to gain the confidence of the people to whom they had come. Each night after a hard day's work they slept underneath the skies. Strange weird noises of the jungle were heard. Oftimes the jungle would buzz with the sound of the millions of jungle birds, animals, and smaller insects. If a leopard were heard, enough shots of the revolver would frighten him away. Then, again, there were nights when an unidentified jungle bird would begin its mournful song. This mysterious sound was made to seem even more weird and uncanny because at those times the other jungle sounds would become awesomely quiet in contrast.

Yes, Mrs. Ruth Stull, a pioneer missionary, made us to see and hear the jungles of Peru where she and her husband served the Lord among hitherto unreached Indian tribes.



Ruth Erickson



Rev. and Mrs. James Comstock and family



Rev. and Mrs. S. C. Cronkhite

A religious people without Christ



PRAYER BAND

Leonard Braley, President; James Eschenbrenner, Vice-President; Shirley Pierce, Secretary, Milbert Haar, Treasurer; Kenneth Christenson, Robert Cohen, Leslie Cross, Merrilyn Johnston, Evelyn Miller, Eileen Ohs, Janet Rusthoven, Jay Rusthoven, Roszella Schultz, Meredith Thomas.

REV. WHITTLE, Oct. 7, 1948.

"500,000,000 souls are still to be reached with the gospel of Christ. We need young men and women who will dare to undertake the task."

REV. HERSCHKURTZ, Oct. 29, 1948.

"There are thousands of Jews in Europe without a home, without an income, without any hope. Prayer is the strongest thing in the world. Will you pray? Pray for the peace of Jerusalem."

Rev. Donald Ward who spoke to us last fall on the needs of the Palestine-Arabian Border said that the Moslem is the hardest person in the world to win to Christ. Every Mohammedan is a missionary and has a deep fervor and passion to spread his religion to other people. They have not only spread their belief throughout the Near East but around the world. The Moslem is hard to reach because he has deliberately allowed himself to be influenced by evil spirits and often become demon possessed.



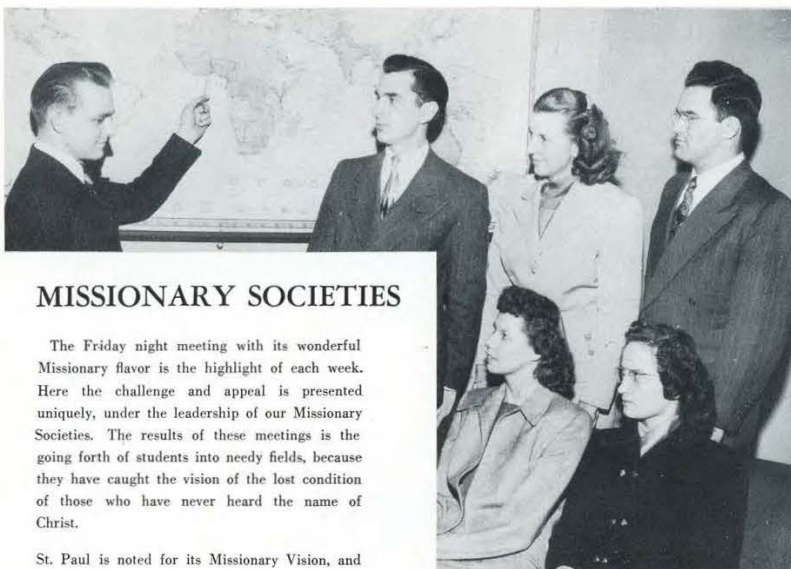
WORLD



Rev. and Mrs. Alvin Martin and son.

Ethel Kilgrove

Groping for an unknown peace.



MISSIONARY SOCIETIES

The Friday night meeting with its wonderful Missionary flavor is the highlight of each week. Here the challenge and appeal is presented uniquely, under the leadership of our Missionary Societies. The results of these meetings is the going forth of students into needy fields, because they have caught the vision of the lost condition of those who have never heard the name of Christ.

St. Paul is noted for its Missionary Vision, and the Missionary pledge confirms this statement. The pledge for this year amounted to \$11,800.

First semester Missionary Society (Left to Right): Robert Cutbirth, President; Richard Diemer, Treasurer; Betty Zumhingt, Vice-President; Richard Harvey, Curator.
Seated: Lou Rabun, Curator, Louella Toews, Secretary.



Second Semester Missionary Society, Foreground: Allan Lester, President.
Seated (Left to Right): Margaret Johnston, Curator; Lois Beecher, Secretary; Janet Rusthoven, Vice-President.
Standing (Left to Right): Robert Hanna, Curator; Lowell Holmgren, Treasurer.



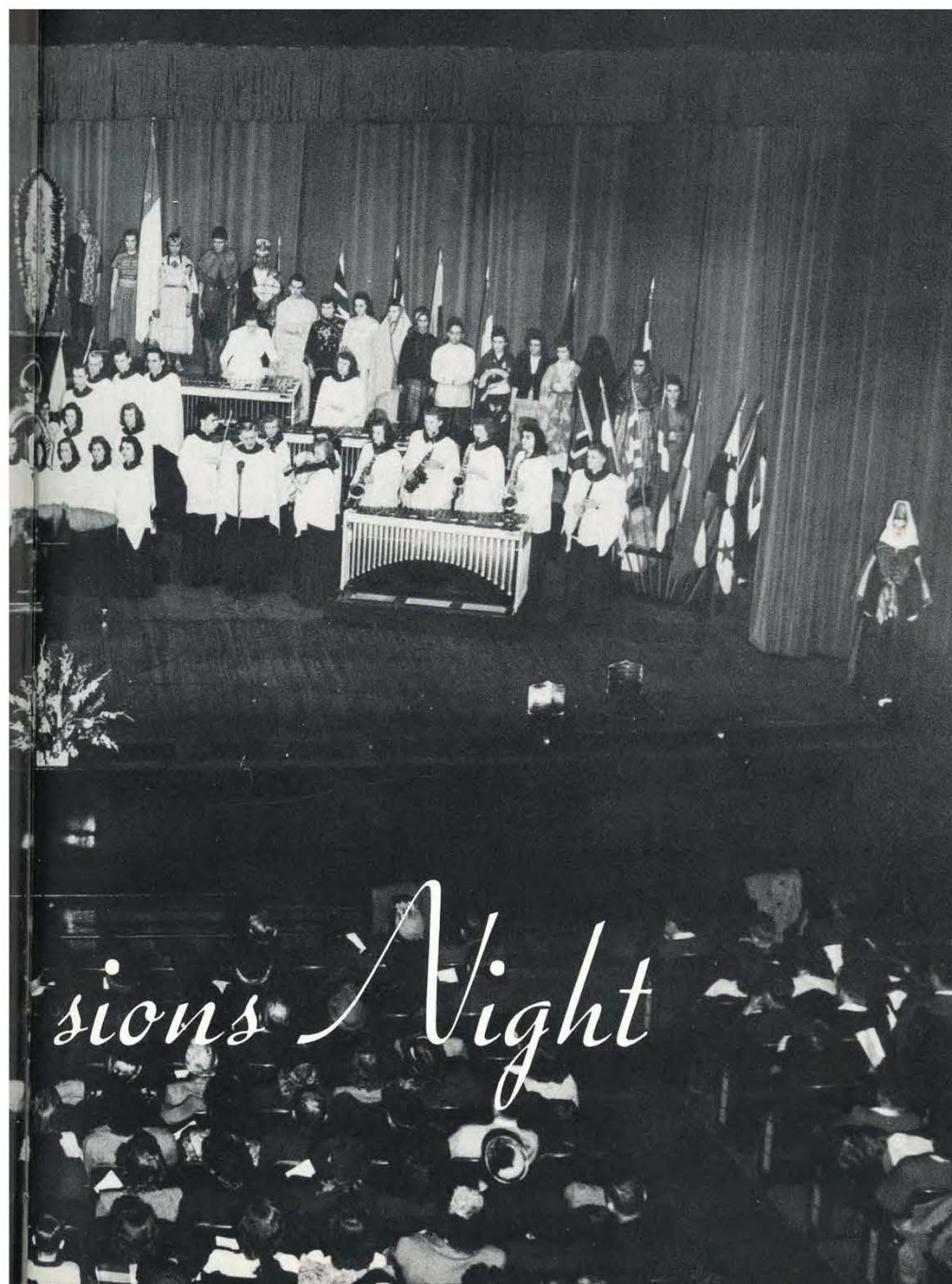
When 3100 people literally jam an auditorium for a missions program, we of the Alliance might be prone to say, "That must have taken place in China or Africa or France." The fact of the matter is, Tuesday night, February 22, this scene was witnessed in the St. Paul Municipal Auditorium—not on the other side of the Globe. Here the students and faculty of the St. Paul Bible Institute joined in presenting one of the most striking missionary programs on this continent.

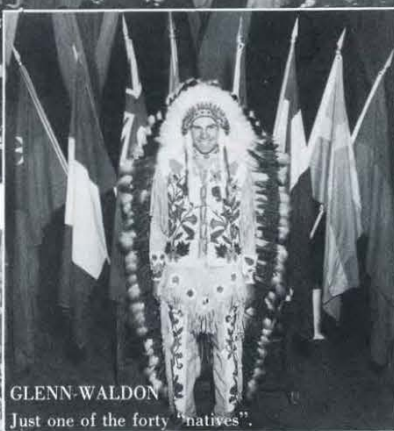
Add to this, hundreds of young people pressing their way to the front of the auditorium in an impressive dedication scene, and realize the fact that people came all the way from as far as Montana and Michigan, — you have seen and heard an unforgettable missionary challenge.

About forty people in strange native costumes, and another forty comprising the colorful St. Paul Choral Club, all massed under the colored lighting, presented, along with the four student speakers, the missionary challenge with a finale featuring fluorescent flags! This year's World Missions Night was a striking success.

In 1941, the embryo began with the name Missionary Convocation and it was not until 1946 that Rev. Peter Voth saw the possibilities of such a meeting if presented to hundreds of young people across the North West. This has led to four successive World Mission Night presentations in the St. Paul Auditorium, climaxed by this year's success.

The result of this vision is World Missions Night of 1949, which not only proved a success in St. Paul but also in Duluth where a repeat performance took place on March 5, presenting the vision of lost and dying souls bound for a Christian eternity.





GLENN WALDON
Just one of the forty "natives".



Trailer-Town

WINNERS OF
SHIELD-SALES CONTEST



We are happy to present this page to Trailer-town in appreciation of their splendid cooperation in the Shield sales contest.

Here are the Trailerites, including a glimpse into their daily life.



How about it, Westfalls? Is it breakfast or brunch?

Belva and Dick between classes!



Daily devotions in the Danielson's domain.



YOUR SHIELD STAFF



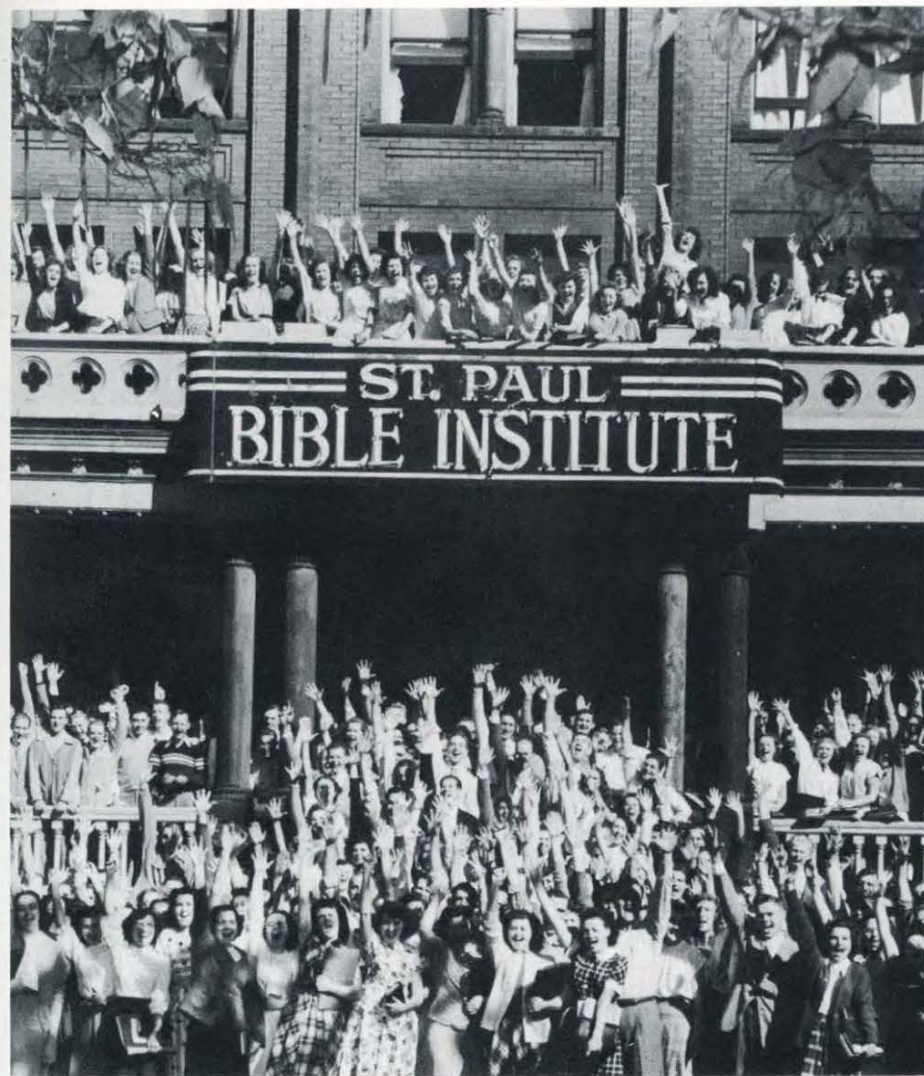
Faculty Advisor: Rev. J. C. Wenninger.
"You are apt to find a SHIELD any-
where in the world."



Left to Right: Mary Irwin, Art Editor; Margaret Graham, Editor-
in-Chief; Willard Aldrich, Advertising Manager; Ruth Johnson,
Assistant Editor.



Front row (Left to Right): Grundy Couch, Sales Manager; Betty Rexilius, Treasurer; Arlene Swanson,
Missions Editor.
Back Row: Alice Thomas, Secretary; Shirley Pierce, Secretary; Leslie Cross, Class Editor.



FAREWELL . . . Well, here it is—our 1949 Shield released to you of our "doings" at Saint Paul Bible Institute. We trust that it will be a blessing to you who read, and that your vision will be broadened concerning the lost and dying who have never heard the name of Jesus even once. May God be pleased to call out young people for His Service, and we pray that this book might be His instrument to lead many in the path of righteousness.

THE SHIELD STAFF

Acknowledgement

Herewith the Shield Staff acknowledges the special help rendered by the following: Doris Van Stone, Lois Aldrich, Miss Vonnice Heiden, Miss Alice Lockwood, Miss Amelia Piper, Rev. George Strohm, Miss Ruth Jones, Claire Westfall, Virginia Daly, Orville Kool, Roy Comstock, Leona Tieszen, and Mrs. Raines.

We also wish to express our appreciation to Buckbee Mears Co., McGill-Warner Co., A. J. Dahl, the S. K. Smith Co., and to our photographer Jim Larson.

We wish to thank the entire student body for their splendid cooperation in Shield sales and also to our Faculty for their kind assistance. To all of you who have made this book possible we say, "Thank You."



THE SHIELD STAFF.

THE ALUMNI ASSOCIATION *of the* ST. PAUL BIBLE INSTITUTE



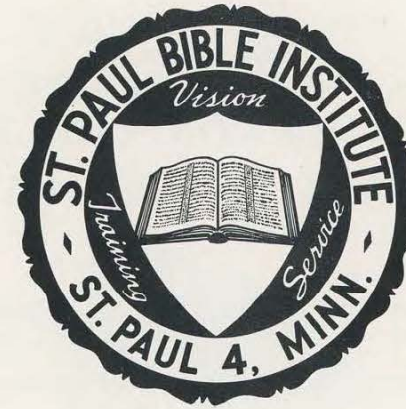
The Alumni Association welcomes the largest class to graduate from the St. Paul Bible Institute to the largest organized group of enthusiastic Institute supporters.

We have full confidence in our Alma Mater, her objectives and administration. We are proud of her achievements and proud of her prospects.

Join us now in wholehearted and constant effort to foster the great work being done by the St. Paul Bible Institute in serving the Master throughout the whole wide world.



Address all Alumni correspondence to 1361 Englewood Avenue, St. Paul 4, Minnesota.



For Information Write: ST. PAUL BIBLE INSTITUTE, 1361 Englewood, St. Paul, Minn.

Compliments of

STANDARD CONSTRUCTION COMPANY INCORPORATED

250 Builders' Exchange Building
Minneapolis 2, Minnesota

606 Hamm Building
St. Paul 2, Minnesota

STUDENT DIRECTORY

ACKELSON, JOSIE E.
Peru, Iowa

ALDRICH, WILLARD L.
1167 W. Minnehaha
St. Paul, Minn.

ALLEN, MARY R.
7104 S. Emerald Ave.
Chicago, Ill.

ANDERSON, DORIS
R. 1, Box 125
Hector, Minn.

ANDERSON, EVELYN M.
Stacyville, Iowa

ANDERSON, KATHERINE
Kennedy, Minn.

ANDERSON, LAMBERT L.
R. 1, Box 131
Oconto Falls, Wisc.

ANDERSON, RUTH A.
1023 S. 2nd Street
Aberdeen, S. D.

ANDERSON, SVEA A.
476 West 27th Ave.
Vancouver, B. C., Can.

ANSON, GERALDINE
2125 No. Irving St.
Fremont, Nebr.

ANSON, LEROY
2125 No. Irving St.
Fremont, Nebr.

ARNEBERG, GORDON
1019 W. Central Ave.
St. Paul, Minn.

ARVAN, WILLIAM G.
809 11th Ave. S. E.
Minneapolis, Minn.

BAKER, BETTY J.
Sauk Rapids, Minn.

BAKER, HERBERT D.
1903 N. Six St.
Esterville, Iowa

BALDWIN, ELDON S.
371 Iglehart
St. Paul, Minn.

BALDWIN, JOYCE A.
2222 East 5th St.
Superior, Wisc.

BALLARD, MARY LEE
Forest Park, Ga.

BALTZER, ALVIN
Alpena, S. D.

BARRETT, ROY N.
820 Moreland Ave. S. E.
Atlanta, Ga.

Best wishes to the Class of 1949

SAINT PAUL BIBLE INSTITUTE



J. C. WENNINGER, Music Director

PAUL KENYON, Pastor

Congratulations

. . . to the President of the St. Paul Bible Institute,
and all his associates, upon completion of another
successful year of preparing young men and women
for spiritual leadership in the church of tomorrow.

The Western District OF THE CHRISTIAN AND MISSIONARY ALLIANCE

CECIL R. THOMAS, Superintendent • 6910 S. LOWE AVENUE, CHICAGO 21, ILLINOIS

CHURCH AND SUNDAY SCHOOL SUPPLIES

From
Christian Publications
Incorporated
Third and Reilly Sts.
Harrisburg, Penna.

William H. Dietz
Incorporated
10 So. Wabash Ave.
Chicago 3, Illinois



Flannelgraph
Lesson Quarterlies
Greeting Cards
Awards

Books
Bibles
Banks
Banners

CONGRATULATIONS TO THE CLASS OF 1949

CONGRATULATIONS

to the
ST. PAUL BIBLE INSTITUTE

and
BEST WISHES

to the
Class of 1949

THE CHRISTIAN and MISSIONARY ALLIANCE CHURCH

Corner 16th St. N. and Banks Ave.
Superior, Wisconsin
H. P. VOTH, Pastor

NYACK has a . . .

PURPOSE . . .

To fully equip every YOUNG MAN academically and
spiritually for the preaching of the WORD OF GOD!

PROGRAM . . .

To offer to every YOUNG MAN specialized courses
leading to the degrees of Bachelor of Sacred Music,
Bachelor Religious Education, and Bachelor of Theology
with the word of WORD OF GOD as the basis for
each course.

PASSION . . .

To challenge every YOUNG MAN to go into all the
world with the WORD OF GOD as man's only hope!

- For further information •
- write

DR. THOMAS MOSELEY

THE MISSIONARY TRAINING INSTITUTE

Nyack-on-Hudson, New York



11 Tim. 2:15 "Study . . . not to be ashamed."

Directory Continued . . .

BEECHER, LOIS M.
1494 Englewood St.
St. Paul, Minn.

BELL, FRANKLIN
Brook Park 2, Minn.

BENDER, STEVE W.
407 Division Ave.
Ellwood City, Pa.

BENNETT, RICHARD O.
Box 292
Walker, Minn.

BERGE, LAWRENCE R.
R. 1
Bagley, Minn.

BERGE, RUTH B.
R. 1
Bagley, Minn.

BIXLER, EPHRAIM
202 E. Garfield Ave.
Swanton, Ohio

BJORK, DARLENE
Battle Lake, Minn.

BJORK, VIOLA
Battle Lake, Minn.

BLACK, ISABELL
Friendship, Wisc.

BLACK, RUTH I.
R. 1
Rochester, Pa.

BOLAR, MARY E.
1910 Prospect
Lincoln, Nebr.

BRALEY, LEONARD
304 N. Lincoln St.
Westmont, Ill.

BRANDT, DORIS L.
R. D. 1
Cabot, Pa.

BRASK, HARLAND C.
666 Cherry St.
St. Paul, Minn.

BREID, EUGENE
Wadena, Minn.

BRIGGS, MARGARET J.
8 Vine St.
Ridgway, Pa.

BROADWELL, GRAYCE E.
610 Division St.
Boone, Iowa

BROWN, DONALD L.
803 - 23rd Ave. So.
Minneapolis, Minn.

BROWN, ELDEN D.
3116 Linwood
Kansas City, Mo.

SPECIAL!!
To Christian Workers

THE ROMANCE OF WINNING CHILDREN

Frank G. Coleman

Written by one who knew and loved children and had
marked success in winning them to Christ. Valuable in-
formation is given in detail, such as, "Leading the Child
to Christ". Some of the chapter headings are:

The Child and You
The Teacher's Task
Your Discipline Problem
Let's Sing
The Word in the Heart
An Hour with the Children

Valuable material for Vacation Bible School leaders or
Child Evangelists. 202 pages. Size 5 1/4 x 7 1/2 inches.
Cloth binding.

Price, \$2.00

Address

UNION GOSPEL PRESS

Box 6059
Cleveland 1, Ohio

NOTE: If you are a Sunday School teacher, ask for
samples of our "CHRISTIAN LIFE" Series Sunday School
literature, treating on the International Uniform Lesson
Topics.

Best Wishes to The Class of 1949

COVERS BY

The S. K. SMITH COMPANY

2857 N. Western Ave.
Chicago 18, Ill.

C. J. and H. W. ANDERSON

JEWELERS AND OPTOMETRISTS

1573 University Avenue

Midway 9910

Reliable Radio Service & Sales

AM - FM - TV

Greg's Radio Laboratories

SAINT PAUL 4, MINNESOTA

G. M. Gregorson, Owner
722 North Hamline

Midway 0866
1059 Payne Avenue

W. F. NOVAK

HARDWARE — PAINTS — GLASS
HOUSEWARE

NE. 2377 704 N. Snelling Ave., St. Paul 4, Minn.

HAERTEL'S VARIETY

1551 UNIVERSITY AVE.

(Near Hamline Theatre)

SNELLING LAUNDRY & DRY CLEANING

582 North Snelling Avenue

COMPLETE FAMILY SERVICE

FOR PROMPT SERVICE CALL MI. 0130

DOM'S SHOE SHOP

1332 W. M'haha

MIDWAY 7288

HAMLINE HARDWARE

TEL. MI 3037

Snelling and Englewood

HAWKINSON'S JEWELRY

DIAMONDS — WATCHES — SILVERWARE
SHEAFFER PENS — BILL FOLDS
Expert Watch Repairing

491 N. Snelling at University

Prior 1077

Compliments of

MIDWAY DEPARTMENT STORE

University Near Snelling



WASHING — GREASING — TIRE REPAIR
TIRES — BATTERIES — ACCESSORIES

CAMPBELL SHELL SERVICE

Hamline & Thomas

NEstor 9019

St. Paul, Minn.

MIDWAY HARDWARE CO.

PAINT — GLASS — HOUSEWARES
SPORTING GOODS

1596 Univ. Ave.

NE. 4466

STANDQUIST TEXACO SERVICE

Snelling & Van Buren

NE 4946

COMPLETE MECHANICAL SERVICE

WASHING
LUBRICATION

BATTERIES
TIRES

Let us call for and deliver your car.

CHRISTENSON'S SHOE STORE

492 North Snelling Avenue

Midway 5230

ST. PAUL 4, MINN.

EUGENE D. CORWIN, Architect

818 Nat'l Bank Bldg.

ST. PAUL 1, MINN.

D. J. TUFTS

St. Paul Bible Institute Piano Tuner

PIANO TUNING AND REPAIRING

All Work Guaranteed

Parker 2367

4553 28th Ave. So., Mpls.

HAMLINE CLEANERS

REPAIRING — DRY CLEANING

NEW MODERN EQUIPMENT

ALL WORK DONE ON PREMISES

Cash and Carry — Special Service Available

724 No. Snelling

MI. 5885

HAMLINE DRUG STORE

719 North Hamline

"Your Friendly Corner Drug Store"

GEO. C. PAUL, Reg. Ph., Prop.

WE SPECIALIZE IN PRESCRIPTIONS

DRUGS, CANDY, & FOUNTAIN SERVICE

Directory Continued . . .

BRYAN, RHODA C.
203 Washington St.
Northfield, Minn.

BRYNSVOLD, LEILA M.
Garrison, Minn.

BUNNEY, CURTIS
432 Dewey
St. Paul, Minn.

BURGER, FLORENCE V.
R. 1
Glen Meyer, Ont., Can.

BURNETT, BONNIE A.
201 N. Center St.
Clear Lake, Iowa

BYRAM, CAROL
1488 Englewood
St. Paul, Minn.

CAIRL, NELSON R.
823 Fernwood Ave.
Toledo, Ohio

CALEY, RHELINDA M.
1617 Hewitt Ave.
St. Paul, Minn.

CALEY, HENRY
1617 Hewitt Ave.
St. Paul, Minn.

CARLSON, ETHEL
2226 - 11th Ave. S.
Minneapolis, Minn.

CARR, MARVIN
326 - 3rd N. E.
Mason City, Iowa

CARTER, MILDRED
R. 4, Box 435
Bessemer, Ala.

CEARFOSS, ELBERT
114 S. Walnut St.
New Castle, Pa.

CELLAR, JOSEPHINE
R. 5
Ashland, Ohio

CHADDERDON, CAROL
Mahtomedi, Minn.

CHADWICK, HARRIET
4029 - 13th Ave. S.
Minneapolis, Minn.

CHRISTENSEN, KENNETH
Wolbach, Nebr.

CHRISTIE, DORIS
R. 3
Shelbyville, Mo.

CHRISTOPHERSON, CLAIRE
1763 Blair Ave.
St. Paul, Minn.

CLARK, AUDREY
210 West 33rd St.
St. Paul, Minn.

CLEGG, MARLES
St. Lawrence, S. D.

Directory Continued . . .

CLINTSMAN, MARIE E.
R. 3
Greenwood, Wisc.

COHEN, ROBERT R.
787 Pusey St.
St. Paul, Minn.

COMSTOCK, ROY L.
1411 N. W. 14th St.
Oklahoma City, Okla.

COUCH, GRUNDY
1254 Kohler Ave.
Akron, Ohio

CROSS, LESLIE
2233 Wellesley
Windsor, Ont., Can.

CUTBIRTH, ROBERT E.
1121 W. 1st St.
Fremont, Nebr.

DAGGETT, CHARLOTTE
Delevan, New York

DALY, VIRGINIA
175 N. Meredith
Pasadena, Calif.

DANIELSON, GARHARD
Rothsay, Minn.

DANIELSON, RUBY (MRS.)
Rothsay, Minn.

DAVID, ROY K.
R. 1
Coleman, Wisc.

DAVIS, ROBERT
164 S. Central Ave.
Marshfield, Wisc.

DeARMEY, MAX
Waukon, Iowa

DeBOER, ERVIN L.
7052 Colby
Lincoln, Nebr.

DECKER, FRANCES D.
Buffalo, Minn.

DENELSBECK, LYLE
Canby, Minn.

DeVRIES, THELMA A.
Windom, Minn.

DICK, ROLAND B.
Mountain Lake, Minn.

DICKINSON, CHARLES
200 High St.
Garrett, Ind.

DICKINSON, FRANCES (MRS.)
200 High St.
Garrett, Ind.

DIEMER, RICHARD
Groveland, Ill.

DOBEL, BETTY
Elk River, Minn.

Swanson's INC.
SINCE 1893

512 No. Snelling at University — NE. 7178
815 Payne — VA. 5121
PAINTS WALLPAPER
COMPLETE ART DEPARTMENT
Swedish & Dresden Craft Headquarters

COMPLIMENTS

KESTING MUSIC
(Since 1925)

Complete Line of Band and Orchestral
Instruments

PIANOS

RADIOS

REPAIRS

34 East Sixth St.

CE 4786

Since 1895

MER SHA CANDIES
"The Gift Delicious"

A. P. HERSCHLER

RETAIL

Office—230 W. Univ.—Mu. 6683
388 St. Peter—Ce. 5373 342 Robert—Ce. 8337

For the UNUSUAL in Flowers

BARR'S FLOWER SHOP

Snelling at University . . . St. Paul 4, Minn.

NE 7941

Res. MI 9970

To The Seniors - -

Sincere Best Wishes

THERE IS A NEED

YOURS IS THE CALL

THE LORD IS YOUR STRENGTH

THEY ARE WAITING

FRESHMEN

CLASS

TO THE SENIORS . . .

**OUR SINCERE GOOD
WISHES FOR A SPIRITUAL
AND FRUITFUL MINISTRY**

Num. 6:24-26

. . . THE JUNIORS

R. & K. SERVICE STATION

Snelling and Minnehaha

- PHILLIPS 66 PRODUCTS •

LUBRICATION — WASHING
BRAKE SERVICE — IGNITION

WE CALL FOR AND DELIVER YOUR CAR

Just call us at Midway 1960

OUR HEARTS AND PRAYERS ARE WITH YOU
GRADUATES AND STUDENTS

of

S. P. B. I.

CHRISTIAN AND MISSIONARY ALLIANCE CHURCH

22nd St. at 2nd Ave. West - Hibbing, Minn.

REV. R. C. CARLSON, Pastor

You'll Always Find A Welcome at the Alliance

NORTHLAND

Publishing House

Publishers and Printers of

- RELIGIOUS BOOKS and TRACTS
- YEARBOOKS and CATALOGUES
- Special Co-operation Provided to Religious Authors

a division of BRUCE PUBLISHING CO.
2642 University Ave., St. Paul 4, Minn.

GREETINGS

from the

MIDWAY TABERNACLE

CHRISTIAN AND MISSIONARY ALLIANCE

Sixth and Division Streets
Boone, Iowa

J. M. BROADWELL, Pastor

Directory Continued . . .

DOBSON, KENNETH
1285 W. Minnehaha
St. Paul, Minn.

DONALD, CONRAD
Elk River, Minn.

DONIS, HAROLD
450 E. St.
Lincoln, Nebr.

DONIS, KATHLEEN (MRS.)
450 E. St.
Lincoln, Nebr.

DRAKE, MARIE M.
1459 E. 7th St.
St. Paul, Minn.

DRIEMEYER, IONE
Tyler, Minn.

DUDLEY, JOHN
5015 Bloomington Ave.
Minneapolis, Minn.

DUDLEY, MARY (MRS.)
5015 Bloomington Ave. S.
Minneapolis, Minn.

DUSCH, ROBERT
541 S. Ave.
DuBois, Pa.

EAMES, WAYNE
859 Fry St.
St. Paul, Minn.

EASTERLING, WILLIAM
Wagner, S. D.

ELDRED, MARIE A.
5412 Judson
Lincoln, Nebr.

ELY, CLARICE
1810 - 59th St.
Superior, Wisc.

EMMEL, CECIL
Clearbrook, Minn.

EMMEL, SHIRLEY
Clearbrook, Minn.

ERICKSON, CHARLES
1003 Arnold Ave.
Thief River, Minn.

ERICKSON, DONALD J. A.
2815 W. Railroad St.
Duluth, Minn.

ESCHENBRENNER, JAMES
2435 Allesandro St.,
Los Angeles, Calif.

EUMURIAN, ELIZABETH
1528 Iglehart Ave.
St. Paul, Minn.

EUMURIAN, JOHN
110 Litchfield St.
St. Paul, Minn.

*Best Wishes and Sincere Appreciation
for the Assistance Furnished Us
during the past year*



MONTGOMERY WARD COMPANY
1400 UNIVERSITY AVENUE
ST. PAUL, MINN.

Directory Continued . . .

EUMURIAN, WOODROW
208 E. Arlington Ave.
St. Paul, Minn.

EVANS, ELEANOR
Hines, Minn.

FAST, LEONA
612 N. Highway
Jackson, Minn.

FEATHERS, A. ROSALEE
396 Baird St.
Morgantown, W. Va.

FLEGAL, BERNARD
702 Locust St.
DuBois, Pa.

FLEGLE, BELVA J. (MRS.)
525 Pifer St.
DuBois, Pa.

FLEGLE, RICHARD
2012 Idaho St.
Toledo, Ohio

FLETCHER, RONALD K.
1610 Edmund Ave.
St. Paul, Minn.

FLOYD, RUTH
2701 Camden
Omaha, Nebr.

FOCHT, FLORENCE (MRS.)
R. 2 - 1307 Spruce St.
Williamsburg, Pa.

FOCHT, STANLEY L.
R. 2 - 1307 Spruce St.
Williamsburg, Pa.

FORD, JACQUELINE
1612 N. E. 13th St.
Oklahoma City, Okla.

FRANZKE, VIOLET
R. 1, Box 279
Appleton, Wisc.

FRENCH, FLAVEL
442 Sherburne Ave.
St. Paul, Minn.

FROST, JOHN
4 Hess Court
Fairmont, W. Va.

FULLER, MELVIN E.
R. 4, Box 81A
Swanton, Ohio

GARDNER, CLARK
834 Parkwood
Pontiac, Mich.

GASKINS, STILLMAN
779 Weller Ave.
Akron, Ohio

GIBBS, RAMONA
Inger Route
Deer River, Minn.

GILCHRIST, VIRGINIA
1110 E. Breckenridge
Ferndale, Mich.

GORMLEY, D. MAXINE
R. 3
Wenatchee, Wash.

GOULD, DOROTHY
Laurel, Nebr.

GRAHAM, MARGARET
125 Gamble Ave.
Toronto, Ont., Can.

GRANDY, CLARENCE
Foreston, Minn.

GRAVES, GENE R.
865 Pusey
St. Paul, Minn.

GREENBERG, RENA
R. 3, Box 41
Elk River, Minn.

GUNN, VIOLA
Wadena, Minn.

GUNTHER, EVELYN
1300 Lowry Ave. No.
Minneapolis, Minn.

HAAR, MILBERT
Onoka, S. D.

HADLEY, DAVID
Box 372
Nevis, Minn.

HAHN, ROBERT
R. 2
Greenwich, Ohio

HAHN, SHIRLEY (MRS.)
R. 2
Greenwich, Ohio

HAINLEN, JUNE (MRS.)
1762 Carl St.
St. Paul, Minn.

HALLOCK, CHARLES
230 Naperville Rd.
Westmont, Ill.

HAMM, ALFRED
R. 2
DeWitt, Nebr.

HANNA, ROBERT
510 Blaine St.
New Castle, Pa.

HARDY, MIRIAM
215 Euclid Ave.
Mansfield, Ohio

HARRIS, JACQUELINE
1549 Crawford Rd.
Cleveland, Ohio

HARVEY, RICHARD
Cable, Wisc.

HEARN, IRENE
273½ Rosslyn Ave. N.
Hamilton, Ont., Can.

HOFFMAN, GERTRUDE
2225 So. 16th St.
Lincoln, Nebr.

HOGAN, RUTH
2665 So. 69th St.
West Allis, Wisc.

Congratulations, CLASS OF '49!
Compliments, FACULTY MEMBERS!
Greetings, UNDERGRADUATES!

Yours, for Worldwide Evangelization

THE HOME DEPARTMENT
 THE FINANCE DEPARTMENT
 THE EDUCATION DEPARTMENT
 THE FOREIGN DEPARTMENT

The
CHRISTIAN AND MISSIONARY ALLIANCE
 260 West 44th St. New York 18, N. Y.

ST. PAUL FEDERAL SAVINGS & LOAN ASSOCIATION

AXEL A. OLSON, Executive Secretary

Our thousands of customers with over ten million dollars invested in our association invite you to become a member. Each account insured to \$5,000.

353 Robert St., between 4th and 5th
 ST. PAUL 1, MINN.

CONGRATULATIONS
 FROM THE MAKERS

OF
 HOME BRAND FOODS

AND THE
 BAKERS

OF
 MINUET CRACKERS

AND
 SWEETEST MAID COOKIES AND CANDIES

★

GRIGGS, COOPER & COMPANY
 And the
SANITARY FOOD MFG. COMPANY
 SAINT PAUL, MINN.

Directory Continued . . .

HOLMES, H. DeLOS
 Hubbard, Minn.

HOLMGREN, LOWELL
 Henning, Minn.

HOLT, PHIL
 Keenan, Texas

HORNER, GUY
 109 Penn Ave.
 DuBois, Pa.

HORST, EDWARD
 Box 73, R. 1, Skyds. Sta.
 Denver, Colo.

HUGHES, AUDREY
 2143 Reaney Ave.
 St. Paul, Minn.

HUGHES, MARVEL
 2143 Reaney Ave.
 St. Paul, Minn.

HULA, DOLORES
 5752 W. Lake St.
 Chicago, Ill.

HUTCHISON, DAVID
 316 No. Duncan
 Stillwater, Okla.

IRWIN, MARY
 4067 Jefferson
 Flint, Mich.

JACOBS, ELAINE (MRS.)
 1227 Hewitt
 St. Paul, Minn.

JACOBS, KENNETH
 1227 Hewitt
 St. Paul, Minn.

JACOBSEN, JACOB
 1056 Churchill St.
 St. Paul, Minn.

JACOBSEN, SUSANNE (MRS.)
 1056 Churchill St.
 St. Paul, Minn.

JENKINS, EDWARD
 933 Franklin Ave.
 New Castle, Pa.

JENKINS, PEGGY (MRS.)
 933 Franklin Ave.
 New Castle, Pa.

JENSEN, LEON
 Tyler, Minn.

JOHNSEN, SHIRLEY
 895 Johnson Pkwy.
 St. Paul, Minn.

JOHNSON, CLINTON
 326 - 7th St. S.E.
 Watertown, S. D.

JOHNSON, DORIS
 Ancker Hospital
 St. Paul, Minn.

JOHNSON, HARVEY
 619 13th Ave. S. E.
 Minneapolis, Minn.

WE COME TO THE END OF THREE YEARS — As we leave these
halls for service, here and in the regions beyond, our prayer is, —

"BE THOU EXALTED"

SENIOR YEAR -- 1949

Directory Continued . . .

JOHNSON, HELEN
R. 19, Box 211 E.
Orlando, Fla.

JOHNSON, LLOYD
616 Johnson St.
Anoka, Minn.

JOHNSON, MARCELLA
4857 Hutchinson St.
Chicago, Ill.

JOHNSON, RUTH
Lambert, Mont.

JOHNSON, VIOLA
Little Falls, Minn.

JOHNSON, VIRGINIA
16 W. Acker St.
St. Paul, Minn.

JOHNSTON, ANNE
489 Blvd. Place, N. E.
Atlanta, Ga.

JOHNSTON, HELEN
Box 257
Richey, Mont.

JOHNSTON, MARGARET
489 Blvd. Place, N. E.
Atlanta, Ga.

JOHNSTON, MERRILYNN
Daniels Apts.
Glendive, Mont.

JONES, BERNICE
7123 So. Seeley Ave.
Chicago, Ill.

JONES, DAVID
7123 So. Seeley Ave.
Chicago, Ill.

JONES, EUGENE
371 Iglehart
St. Paul, Minn.

USELMAN'S GOLDEN RAY BAKERIES

"YOUR DAILY BREAD"

Distinguished Baked Foods

1815 Selby — MI 0627
2040 Marshall — MI 7768
784 Grand — EL 1153

LLOYDS PHARMACY

Accurate
PRESCRIPTION SERVICE
SCHOOL SUPPLIES
720 N. Snelling



PHONE NE. 9196 COMPLETE SERVICE

WINKEL SHELL SERVICE
RAY WINKEL, Prop.

756 North Snelling Ave.

St. Paul 4, Minn.

CO-OP'S INC. OF ST. PAUL

CONSUMER OWNED
SERVING THE COMMUNITY

With
GROCERIES - MEATS - VEGETABLES

Hamline and Minnehaha
St. Paul, Minn.

Directory Continued . . .

- JONES, THOMAS
7123 So. Seeley Ave.
Chicago, Ill.
- JORDAHL, DON
Wadena, Minn.
- JORGENSEN, MARY (MRS.)
201 W. 4th St.
Monroe, Mich.
- JORGENSEN, WILBUR
Box 124
Lyle, Minn.
- KEEN, STELLA
R. 2
DuBois, Pa.
- KING, BETTY
5316 Brooklyn Ave.
Los Angeles, Calif.
- KLEMPER, ALICE
Lambert, Mont.
- KNISS, MILDRED
2605 Algonquin Pky.
Louisville, Ky.
- KNOUF, LLOYD
2426 North Adams
Enid, Okla.
- KOBUS, ESTHER
Coleman, Wisc.
- KOOL, ORVILLE
Box 199
Alton, Iowa
- KOOY, VIOLA
Orange City, Iowa
- KOPP, BYRON E.
2829 - 36th Ave.
Minneapolis, Minn.
- KULJIAN, MARGARET (MRS.)
P. O. Box 502
Carpinteria, Calif.
- KULJIAN, ROY
415 E. Adams
Los Angeles, Calif.
- KYLE, LENORE
412 N. 22nd St.
Omaha, Nebr.
- LANDON, DAVID
641 S. 28th
Lincoln, Nebr.
- LANGMADE, GORDON
R. 2
Anoka, Minn.
- LEE, JOAN R.
2218 S. Laramie
Cicero, Ill.
- LEE, LOIS
1708 Cummings Ave.
Superior, Wisc.
- LEEDER, LEO
1021 W. Central Ave.
St. Paul, Minn.
- LEEDER, LEO (MRS.)
1021 W. Central Ave.
St. Paul, Minn.
- LEMKE, WILLIAM W.
Garner, Iowa
- LESTER, ALLAN
1735 Holton Ave.
St. Paul, Minn.
- LINDBURG, RUTH
Ronan, Mont.
- LONGSTREET, ISABELL
3123 Holland St.
Erie, Pa.
- LUHN, HERBERT
1213 Grand Ave.
Racine, Wisc.
- McDANIELS, GEO. D.
122 Maple St.
Franklin, Pa.
- McDOWELL, MYRTLE (MRS.)
497 Arthur St.
Pontiac, Mich.
- McDOWELL, NEIL H.
497 Arthur St.
Pontiac, Mich.
- McFADDEN, JAMES C.
Fort Totten, N. D.
- McINTYRE, FRANCES
125 Marshall
Boone, Iowa
- McLAUGHLIN, FRANK D.
3248 - 22nd Ave. S.
Minneapolis, Minn.
- McLAUGHLIN, RICHARD
R. 7
Erie Pa.
- McMAHON, GRANT E.
319 Duluth Ave. N.
Thief River Falls, Minn.
- MADSEN, ELAINE
7200 Cumings St.
Lincoln, Nebr.
- MANLOVE, KATHRYN L.
Park Rapids, Minn.
- MARTIN, RUBEN
778 Pusey St.
St. Paul, Minn.
- MARVIN, DOROTHY
Beulah Beach, Ohio
- MASON, GEORGE M.
7200 S. W. 9
Des Moines, Iowa
- MEDCHILL, DONA M.
1579 Chelsea
St. Paul, Minn.

Directory Continued . . .

- MELTZER, VERA E.
4616 Tompkins Ave.
Oakland, Calif.
- MENTINK, JEANETTE
Hammond, Wisc.
- MILLER, EVELYN
Malta, Mont.
- MILLER, FLORENCE
320 6th Ave. S. W.
Aberdeen, S. D.
- MOREHOUSE, MARILYN
807 West Third
Erie, Pa.
- MORGAN, KENNETH
878 Hemphill Ave. S. W.
Atlanta, Ga.
- MUMMA, BONNIE
1531 So. 19th St.
Lincoln, Nebr.
- NEUMAN, ANNABELL
523 Lakeshore Drive
Lake City, Minn.
- NICKEL, MELVIN
R. 3
Denmark, Wisc.
- OHS, EILEEN
Malta, Mont.
- OLSON, PAUL
619 - 15th St.
Minneapolis, Minn.
- OLSON, RICHARD
Tracy, Minn.
- OLSON, RONALD
3803 - 40th Ave. S.
Minneapolis, Minn.
- OSBORN, GLENNIS (MRS.)
722 N. Madison Ave.
Mason City, Iowa
- OSBORN, HAROLD
722 N. Madison Ave.
Mason City, Iowa
- OWCZAREK, HARRY
R. 1, Box 256
Coleman, Wisc.
- PALMQUIST, LAWRENCE
R. 3
Elk River, Minn.
- PALMQUIST, VALERIE
R. 3
Elk River, Minn.
- PARKER, EDGAR
859 Fry St.
St. Paul, Minn.
- PARKER, LOREN
3315 - 56th St.
Des Moines, Iowa
- PARTRIDGE, GLENNA
So. Haven, Minn.
- PAULSON, BETTY LOU
Foster, Nebr.
- PEARSON, F. JUNE
Carroll, Nebr.
- PEATEE, RACHEL
Weston, Ohio
- PETERSON, BETTY
Box 383
Harland, Iowa
- PETERSON, BERNADA
Custar, Ohio
- PETERSON, HARRIET
Bowls, Minn.
- PETERSON, JOANNE
R. 2, Box 98
Anoka, Minn.
- PETERSON, NOVA
844 Portland Ave.
St. Paul Park, Minn.

WESTLUNDS

Quality Meats & Provisions

*Quick Freeze Service
and Frosted Foods*

Specializing Servicing Restaurants,
Hotels and Institutions

Slater's Restaurant

1557 University

HOME STYLE DINNERS

— Closed Sunday —

COMMONWEALTH ELECTRIC CO.

ELECTRIC WIRING — MOTOR REPAIRING

**Switchboards
Panelboards and Cabinets**

Power Plant Equipment

417 Broadway St. Paul 1, Minn. GA 1836

Directory Continued . . .

PETERSON, OLIVE
Hager City, Wisc.

PETRAK, CHARLOTTE
White Bear Lake Br. St.
St. Paul, Minn.

PIERCE, SHIRLEY
5020 Dover St.
Oakland, Calif.

PIPPERT, V. MARIE
R. 2
Mason City, Iowa

PLUMB, FOREST
3838 Wrenwood Rd.
Toledo, Ohio

PORTER, ALICE J.
330 Judson St.
Pontiac, Mich.

POWELL, KATHRYN
Box 495
Redlands, Calif.

PRICE, JUNE
373 Roycraft Ave.
Long Beach, Calif.

PURVIANCE, RODERICK
Minburn, Iowa

PUST, LOUISE
Sidney, Mont.

PUST, WALDO
Sidney, Mont.

QUESNELL, IRA E.
3152 - 37th Ave. S.
Minneapolis, Minn.

RABUN, LOU
207 B. Chase St.
St. Andrews Homes
Charleston, S. C.

REDIGER, G. LLOYD
107 W. Jefferson
Morton, Ill.

REDIGER, NORMAN
107 W. Jefferson
Morton, Ill.

REED, ROLAND
721 N. Waigh St.
Kokomo, Ind.

REXILIUS, BETTY (MRS.)
4200 N. 70th St.
Lincoln, Nebr.

REXILIUS, ROYCE
4200 N. 70th St.
Lincoln, Nebr.

RICHARDSON, MARY
Box 111
Wendell, N. C.

RITENOUR, JO ANN
Woman Lake Road
Hackensack, Minn.

RITTEL, ALVINA
Tripp, S. D.

ROBERTS, JIMMIE
717 Dolores Ave.
San Leandro, Calif.

ROBINSON, KENNARD
4804 Harvest Lane
Toledo, Ohio

ROGERS, JEANNETTE
23 Carter Ave. S. E.
Atlanta, Ga.

ROOT, ELAINE
So. Jefferson St.
Wadena, Minn.

ROOT, ROSWELL
So. Jefferson St.
Wadena, Minn.

ROSTAD, DOUGLAS
Box 1067
Fargo, N. D.



THEY COME

TO TAYLOR UNIVERSITY—seeking education at its best, in wholesome, Christian surroundings.

THEY GROW

In knowledge, in grace, in poise, in devotion, in a total college situation conducive to the best.

THEY GO

To serve a needy world, as ministers, teachers, doctors, lawyers, dentists, social workers, missionaries.

BECAUSE

Taylor University is distinctly Christian. Appealing to faculty and students who desire a clean living environment in which to learn and to enjoy ALL of their college life. Fully Accredited. Address Box 00 for Free Catalog.

TAYLOR UNIVERSITY

UPLAND, INDIANA

Directory Continued . . .

ROWE, NORIENE
Verndale, Minn.

RUSTHOVEN, JANET
6715 W. Roosevelt Rd.
Berwyn, Ill.

RUSTHOVEN, JAY
6715 W. Roosevelt Rd.
Berwyn, Ill.

RUSTHOVEN, PETER
6715 W. Roosevelt Rd.
Berwyn, Ill.

SALTWICK, ELAINE
1009 N. Central Ave.
Duluth, Minn.

SCHULTZ, ROSZELLA
412 Lincoln Ave. So.
Sidney, Mont.

SCHUTZ, RUTH
Boyceville, Wisc.

SEEGRAVES, DORIS
92 Mechanic St.
Pontiac, Michigan

SHUEY, DIANNE
Pine City, Minn.

SIEVERT, FAYE (MRS. G.)
222 - 9th St.
Elyria, Ohio

SIEVERT, GENE
222 - 9th St.
Elyria, Ohio

SIGL, HAROLD
1405 Breda St.
St. Paul, Minn.

SIGL, MILDRED (MRS.)
1405 Breda St.
St. Paul, Minn.

SILVEY, JOHN
187 Howard S. E.
Atlanta, Ga.

SOUTHWESTERN DISTRICT

Texas Oklahoma Arkansas Louisiana

DISTRICT HEADQUARTERS

Drawer No. 33, Arlington, Texas

Rev. R. Mills Gray

District Superintendent

THE GREAT
SOUTHWEST

CHALLENGING AND
CHARMING

Tenth Annual District Camp Meeting

Arlington, Texas

June 17 - 26

Seventh Annual Ozark Mountain Camp Meeting

Pinecrest Camp Grounds

Ozone, Arkansas

July 29 - Aug. 7

Outstanding Speakers and Missionaries

For information write the District Superintendent

SIMPSON, M. EILLEN
539 Crawford Ave.
Windsor, Ont., Canada

SLANE, FORREST
496 E. Garfield
Swanton, Ohio

SMITH, IONE
205 - 9th Ave. S. W.
Aberdeen, S. D.

STEELE, ADA
So. International Falls, Minn.

STERNEMAN, LOIS MAE
302 No. Merriam
Thief River Falls, Minn.

STOESZ, HAROLD
Butterfield, Minn.

STOMBAUGH, MERLE
1045 R. R. St.
Portage, Pa.

COAL COKE BRIQUETS FUEL OIL

For your home or business

"BLUE POINT" POCAHONTAS—ALL SIZES
"STOTT BRIQUETS" "PETROLEUM BRIQUETS"
"PETROLEUM CARBON" COKE
"COMMANDER"—KENTUCKY'S FINEST STOKER COAL
"FIRE KING"—SOUTHERN ILLINOIS STOKER COAL
REX FUEL OIL

For Large or Small Orders
Phone NEstor 6511

GREAT LAKES COAL & DOCK CO.

2102 University Ave.

St. Paul, Minn.

Directory Continued . . .

STONE, JAMES 525 Franklin Ave. Ellwood City, Pa.	SWANSON, GORDON Lambert, Mont.	SYDOW, JUNE Hines, Minn.
STRANDBERG, DONNA LEE 6408 Havlock Lincoln, Nebraska	SWANSON, MRS. GORDON Lambert, Mont.	TALMAGE, REX Ronan, Mont.
STROBRIDGE, WILMA JEAN 1212 Howard Muskegon, Mich.	SWANSON, HARLAND R. 1, Box 175 Monticello, Minn.	TAYLOR, JEANINE 5732 W. Lake St. Chicago 44, Ill.
STROSHINE, CARROLL R. 6, Box 373 Toledo, Ohio	SWANSON, ROBERT 1820 Green St. Anoka, Minn.	TAYNOR, MARTHA R. 4, Box 110 Swanton, Ohio
SWANSON, ARLENE Box 4 Lambert, Mont.	SWANSON, SHIRLEY Lambert, Mont.	THIESSEN, VERA Lambert, Mont.
SWANSON, COLLEEN R. 1, Box 107 Aitkin, Minn.	SWANSON, WINFIELD Big Lake, Minn.	THOMAS, ALICE 6910 So. Lowe Ave. Chicago, Ill.
SWANSON, GERALD Lambert, Mont.	SWARTZ, MARVIN 4328 Central Ave. Highland Highway, Calif.	THOMAS, MEREDITH 3258 So. 59th Ave. Cicero 50, Ill.
	SWENSON, MAVIS Backus, Minn.	

*On behalf of the Saint Paul Bible
Institute Alumni and Students in
our membership we extend to the class
of '49 the congratulations of The
American Legion and Auxiliary*

Judson-Livingstone

Post & Unit No. 488, Department of Minnesota

*Harry W. Neeth, Commander
Mrs. Hiram Peterson, President*

Directory Continued . . .

THOMAS, RICHARD 113 - 27th St., So. 22 Mason City, Iowa	ULANDER, VERN 3936 - 43rd Ave. So. Minneapolis, Minn.	VOTH, FLORENCE 710 So. Ashland Green Bay, Wisc.
THOMSON, ROBERT 3213 Osborne Blvd. Racine, Wisc.	VANDER PLOEG, EILEEN Orange City, Iowa	VOTH, VERNON 710 So. Ashland Green Bay, Wisc.
THOMPSON, GEORGE Bagley, Minn.	VAN SCHOOTEN, ALVIN Princeton, Nebr.	WAITE, JACK R. 2, Box 130 Tyrone, Pa.
TIMBLIN, PEARL 401 Ridge Ave. Butler, Pa.	VAN SCHOOTEN, HERMAN Princeton, Nebr.	WAITE, SHIRLEY (MRS. J.) R. 2, Box 130 Tyrone, Pa.
TIMMONS, MARGARET 3736 Queen Ave., N. Minneapolis, Minn.	VAN SCHOOTEN, MALVIN Princeton, Nebr.	WALDON, GLENN Woolstock, Ia.
TIMM, JACK Olivia, Minn.	VAN STONE, DORIS (MRS. L.) 3512 Raymond St. Houston 7, Texas	WALDON, LENORA (MRS. G.) Woolstock, Iowa
TOEWS, LUELLA Mountain Lake, Minn.	VAN STONE, LLOYD 3512 Raymond St. Houston 7, Texas	WALLIN, RUTH 1247 S. Scoville Ave. Berwyn, Ill.
TOEWS, WILLARD Mountain Lake, Minn.	VONG, GLORIA 8327 So. Elizabeth Chicago, Ill.	WARD, LOIS 1252 Hood Ave. Chicago 40, Ill.

Just Out . . .

BELOVED CHRISTIAN HYMNS

With English, Spanish and Italian Verses
Transcribed for solo guitar by the immortal

WILLIAM FODEN

Edited by the master-teacher

ALBERT BELLSON

The collection includes the following favorites:

- SHALL WE GATHER AT THE RIVER
- SILENT NIGHT
- SWEET HOUR OF PRAYER
- THERE IS A FOUNTAIN FILLED WITH BLOOD
- THERE IS A HAPPY LAND

COME now everyone! Thank the Lord for your musical talent. Praise HIM by playing these great Christian Hymns on your Guitar.

PRICE \$1.00

Order your copies today from:

BELLSON MUSIC COMPANY

376 Saint Peter Street St. Paul 2, Minn., U. S. A.

Eat Well Cheaply

AT THE

QUALITY TEA ROOM CAFETERIA

SNELLING & VAN BUREN ST. PAUL, MINN.

COMPLIMENTS OF

HAZEL PARK ALLIANCE CHURCH

East Seventh and White Bear Ave.

ST. PAUL 6

L. A. THOMPSON, Pastor

Compliments of

Marvin Cleaners

DRY CLEANING

NEstor 0136

1346 W. Minnehaha Ave.

LIBERTY STATE BANK

SELBY AT SNELLING AVE.

NE. 8681

Directory Continued . . .

WARNER, MARGARET

Lamberton, Minn.

WATTS, DRENNEN

4518 Greenwood St.
Lincoln, Nebr.

WATTS, PAUL

2952 No. 50th
Lincoln, Nebr.

WEAVER, HARRISON

1939 Devon Ave.
Dayton 9, Ohio

WELK, ESTHER (MRS. M.)

787 Pusey St.
St. Paul 4, Minn.

WELK, MILE

787 Pusey St.
St. Paul 4, Minn.

WENDT, GENE

722 N. Madison
Mason City, Ia.

MIDTOWN BARBER SHOP

634 North Snelling Ave.

The Students of the School appreciate the neat work and pleasing atmosphere of this Christian barber shop. There is a reason why this skilled Christian Barber is always busy.

THE

JOESTING & SCHILLING

COMPANY

*Complete Hotel, Restaurant
and Institution Outfitters*

ST. PAUL, MINN.

CONGRATULATIONS

CLASS OF '49

Sherman's Cities Service

649 N. Snelling

Compliments

NORTH SIDE ALLIANCE CHURCH

Corner Fremont & Lowry Avenue North
MINNEAPOLIS 12, MINN.

Paul W. Gunther, Pastor

OAK GROVE DAIRY

OAK GROVE'S RICH DAIRY PRODUCTS, DELIVERED FRESH FROM THE
COUNTRY DAILY, ARE SERVED AT EACH MEAL IN OUR DINING ROOM.

EL. 1018

SAINT PAUL



CONGRATULATIONS
CLASS OF '49
CLARENCE J. LARSON
Photographers

61 N. Dale

Dale 802

CANDID WEDDINGS — ADVERTISING
ACTIVITIES — SCHOOL ANNUALS
GROUPS — COMMERCIAL



Directory Continued . . .

WEST, DOROTHY
232 W. Arthur St.
Hicksville, Ohio

WEST, MILDRED
232 W. Arthur St.
Hicksville, Ohio

WESTFALL, CLAIRE (MRS. P.)
R. No. 1
Toledo, Iowa

WESTFALL, PAUL W.
R. No. 1
Toledo, Iowa

WHIPPLE, CLARA JANE
Marvin, So. Dakota

WHITE, LEE
Postville, Ia.

WHITE, LINTON
Postville, Ia.

WIDMAN, ELSIE
DeSmet, So. Dakota

WIEBE, ANN
Mountain Lake, Minn.

WIESE, LOREN
Arnolds Park, Ia.

WILLIAMS, DOROTHY
6833 So. Carpenter St.
Chicago 21, Ill.

WILLIAMS, MILDRED
Echo, Minn.

WILLOUGHBY, DONALD
1110 Oakes Ave.
Superior, Wisc.

WOLTERS, THELMA
Little Falls, Minn.

WOOD, M. ALDA
Onamia, Minn.

WOOD, RUTH
Onamia, Minn.

WOODWARD, MURIEL
Ft. Wayne Bible Inst.
Fort Wayne, Ind.

WRIGHT, ALBERT
736 N. Cottage St.
Meadville, Pa.

WRIGHT, CHARLES
266 Randolph St.
Meadville, Pa.

YEARSLEY, FRED
787 Pusey St.
St. Paul, Minn.

ZUMHINGST, BETTY
Wauneta, Nebr.

CONGRATULATIONS
TO THE
GRADUATING CLASS
OF
1949

**The Alliance
Missionary Church**

of
Mountain Lake, Minnesota
Bernard S. King, Pastor

H. E. ALMQUIST
BIBLES CHRISTIAN BOOKS TRACTS

IMPORTER OF SOUND EXPOSITORY BOOKS
GREEK AND HEBREW TEXTS AND LEXICONS

Specializing in the Deeper Life Writings

of

Mrs. Jessie Penn-Lewis — Oswald Chambers

T. Austin-Sparks — L. L. Legters — Andrew Murray

and many others.

3025 Irving Avenue South

PLeasant 3293

MINNEAPOLIS 8, MINNESOTA

First Covenant Church

Chicago Avenue at Seventh Street

MINISTERS

PAUL S. REES
ORVAL BUTCHER
A. CABOT JOHNSON
REUBEN JOHNSON

SERVICES

Sunday School, All Ages 9:45 A.M.
(3 College Age Groups)
Morning Service, W. D. G. Y. 11:00 A.M.
Evening Service 7:30 P.M.
Bible Study, Thursday 7:45 P.M.

YOUTH ACTIVITIES

Four age groups comprise THE FELLOWSHIP OF YOUTH LEAGUES,
providing an outlet for the interests of youth. A CHRIST-centered
program of buoyancy and enthusiasm, geared to our times, includes
worthwhile speakers, discussions and socials.

Youth League (18-24) each Friday 8:00 P.M.
Senior League (25 and over) First and Third Friday 8:00 P.M.

Come and worship with us!!

Lincoln
PRINTING COMPANY

Letterpress, Offset . . .

Circulars, Letterheads,

Booklets, Publications,

Commercial and Social

Announcements, Business Forms,

Etc. Original Designs and Layouts



Telephone Garfield 4191
500 No. Robert Street

Greetings
from

SIMPSON BIBLE INSTITUTE



**YOUR SCHOOL
IN THE PACIFIC NORTHWEST**



BETHEL COLLEGE & SEMINARY

"St. Paul Bible Institute's Good Neighbor in Christ"

1480 NORTH SNELLING AVENUE

SAINT PAUL, MINNESOTA

CHEROKEE ICE CREAM

THE FINEST HOME PACKED

RI. 4033

642 So. Smith

ROY R. DUE

Manufacturing Jeweler — Watches & Diamonds
Mountings — Wedding and Stone Rings

Office—CEdar 6011
Res. Van Buren 0207

510 Bremer Arcade
St. Paul 1, Minnesota

COURTESY
OF

MIRO LABORATORIES, INC.

1835 University Ave.

MANUFACTURERS AND BUILDING MAINTENANCE
ENGINEERS

PRior 1414

PRior 3636

*Sharing with you
Christ's Commission*

Dedicated to preparation:

Four year accredited College
Three year Seminary
Full confidence in the Bible
Carefully selected student body
A strong missionary emphasis

THE NORTHWESTERN DISTRICT OF THE

*Christian and
Missionary Alliance*

Adds Its Congratulations . . .

to the thirty-first graduating class of
The St. Paul Bible Institute, and wishes
each member a God-ordained and
far-reaching ministry.

**"In all thy ways acknowledge Him, and He shall
direct thy paths."**

DISTRICT OFFICERS

Rev. C. J. Mason Superintendent
Rev. J. S. Rahn Secretary
Rev. L. W. Pippert Treasurer

NORTHWESTERN DISTRICT



Where can you do better?

these and others at the . . .

INSTITUTE BOOK STORE

AMERICAN
BIBLE
SOCIETY
BLESSING
BOOK
STORES
CHRISTIAN
PUBLICA-
TIONS INC.
WM. B. ELD-
MAN'S PUB.
CO.

PUBLISHERS

HARPER &
BROTHERS
HIGLEY PRESS
JUDSON PRESS
LILLENAS PUB.
CO.

PUBLISHERS

RODHEAVER
HALL-MACK
CO.
JOHN A. DICK-
SON PUB.
CO.

PUBLISHERS

THOMAS NEL-
SON & SONS
MESSENGER
CORPORA-
TION

LOISEAUX
BROS.

LORENZ PUB.
MOODY PRESS
FLEMING H.
REVELL CO.

PUBLISHERS

SCRIPTURE
PRESS, INC.
STANDARD
PUBLISHING
CO.

PUBLISHERS

VAN KAMPEN
PRESS
WESTMINSTER
PRESS

OXFORD
UNIVERSITY
PRESS
THE WORLD
PUBLISHING
CO.

WARNER PRESS

VARIETY

SONG BOOKS
CHORUS BOOKS
TEXT BOOKS
DICTIONARIES
CHILDREN'S STORIES
FLANNELGRAPH
OBJECT LESSONS
BIBLES
PLACQUES
STATIONERY
BOOK MARKS
SCHOOL SUPPLIES
GREETING CARDS
BOOKS FOR CHURCH
BOOKS FOR SUNDAY
SCHOOL

SPECIAL ORDERS TAKEN

MISSIONARY STORIES
MISSIONARY BIOGRAPHIES
BIOGRAPHIES OF GREAT MEN
CHRISTIAN FICTION
CHILDREN'S FICTION
DEVOTIONAL BOOKS
BOOKS ON PRAYER
BOOKS ON DEEPER LIFE
SERMON NOTES
BOOKS ON THE BIBLE
COMMENTARIES

*Here is where you can get anything you want . . .
Do it the easy way . . .
Write to . . .*

INSTITUTE BOOK STORE

1361 Englewood Ave., ST. PAUL 4, MINN.